



BOND CEMENT AND/OR SONIC SEISMOGRAM LOG
GAMMA RAY

COGCC Doc#2597273

FILING NO.
HBC-GR-SS-
106619

COMPANY	CHEVRON, USA
WELL	J. E. COLTHARP 9-X
FIELD	RANGELY
COUNTY	RIO BLANCO
STATE	COLORADO
LOCATION	453' FSL 1741' FEL
OTHER SERVICES	
PERMANENT DATUM	SEC. 35 TWP. 2N RGE. 102W
LOG MEASURED FROM	GL ELEV. 5201'
DRILLING MEASURED FROM	KB
DATE	10-30-80
RUN NO.	ONE
TYPE LOG	BOND CEMENT - GAMMA RAY - SONIC SEISMOGRAM
DEPTH - DRILLER	6500'
DEPTH - LOGGER	6296'
BOTTOM LOGGED INTERVAL	6294'
TOP LOGGED INTERVAL	5300'
TYPE FLUID IN HOLE	WATER
SALINITY PPM CL.	
DENSITY LB./GAL.	
LEVEL	628'
MAX. REC. TEMP. DEG. F.	1570
OPR. RIG TIME	6 HOURS
RECORDED BY	SHELTON
WITNESSED BY	MR. FINCH

RUN NO.	1
BIT	
BORE HOLE RECORD	FROM TO
SIZE	4-1/2"
WST.	
CASING RECORD	FROM TO
	0 TD

THIS HEADING AND LOG CONFORMS TO API RECOMMENDED STANDARD PRACTICE RP-33 (4)

LOGGING AND EQUIPMENT DATA (BOND CEMENT LOG)			
DATE RECORDED	10-30-80	TOOL MODEL NO.	5547-0-1
TIME STARTED	8:00	DIAMETER	3.5" X 2.0625"
TIME FINISHED	2:10	LENGTH	17' (4' SPACING)
LOGGED INTERVAL	6294'-5300'		
LOGGED CEMENT TOP	5554'		

CEMENTING DATA				
DATE AND HOUR SET	1	2	SQUEEZE NO. 1	SQUEEZE NO. 2
SETTING TIME (HRS.)				
TYPE CEMENT				
SACKS USED				
PRECEDING FLUID				
% ADDITIVE				
% RETARDER				
SLURRY WEIGHT				
BREAKDOWN PRESSURE				
SURFACE MAX. PRESS.				
BOTTOM MAX. PRESS.				

GAMMA RAY			NEUTRON		
RUN NO.	ONE		RUN NO.		
TOOL MODEL NO.	5547-0-1		LOG TYPE		
DIAM.	3.5"		TOOL MODEL NO.		
DETECT. MODEL NO.	5549-25		DIAM.		
TYPE	SCINT.		DETECT. MODEL NO.		
LENGTH	3"		TYPE		
DIST. TO N. SOURCE			LENGTH		
			SOURCE MODEL NO.		
			SERIAL NO.		
			SPACING		
			TYPE		
			STRENGTH		

LOGGING DATA										
GENERAL			GAMMA RAY				NEUTRON			
RUN NO.	DEPTHS	SPEED	T. C	SENS	ZERO	API GR. UNITS	T. C	SENS	ZERO	API
	FROM TO	FT. MIN	SEC	SETTINGS	DIV. L. OR R.	PER LOG DIV.	SEC	SETTINGS	DIV. L. OR R.	PER
1	6288' 5300'	30	3	G-800 D-400 R-5	3L	10.5				

REMARKS:
10' MARKERS OMITTED BY REQUEST

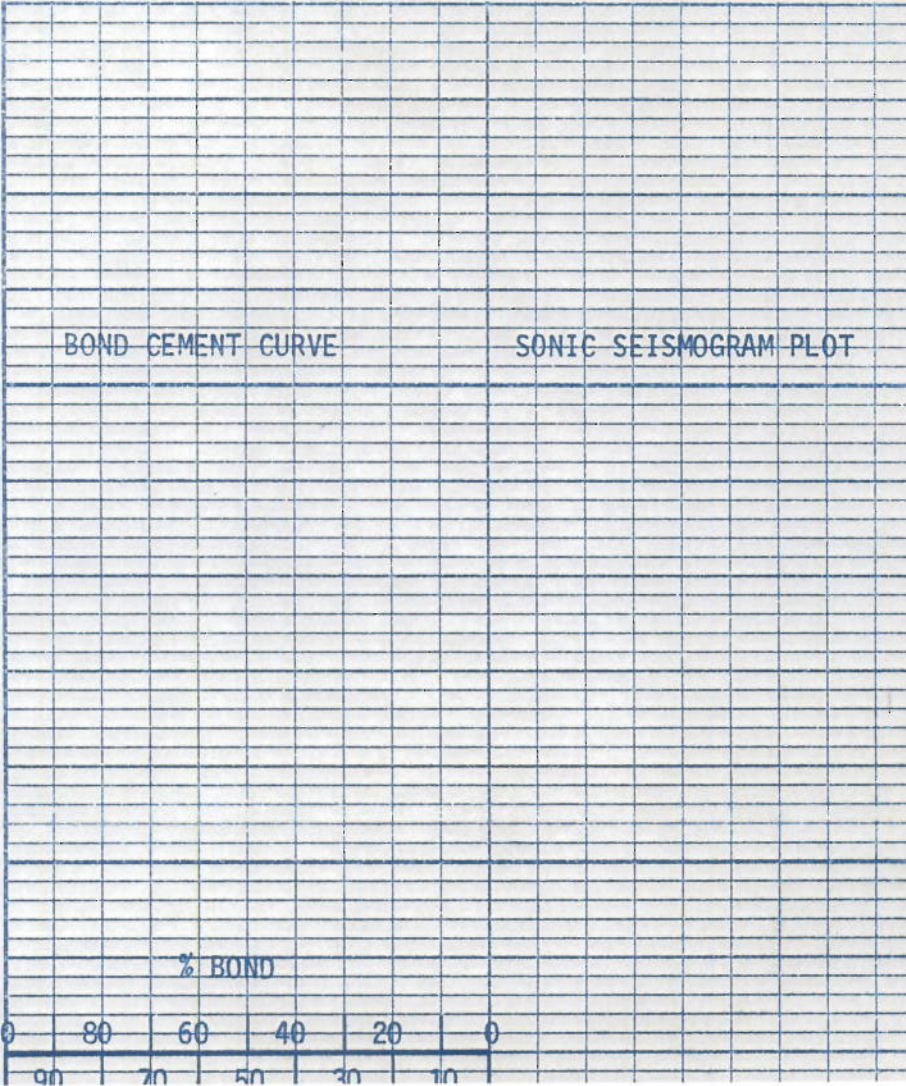
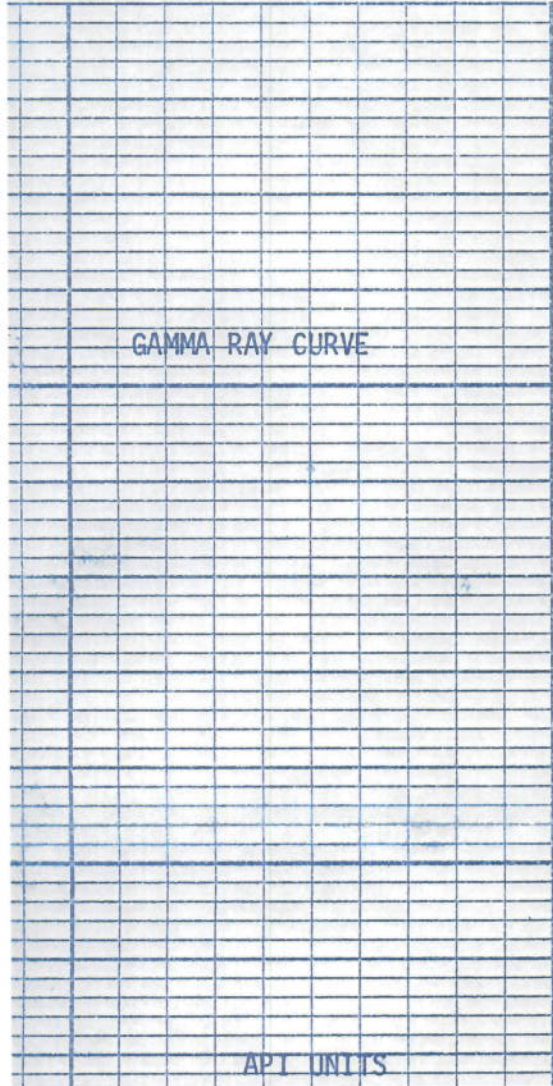
LOGGING AND EQUIPMENT DATA (BOND CEMENT LOG)					
DATE RECORDED	10-30-80		TOOL MODEL NO.	5547-0-1	
TIME STARTED	8:00		DIAMETER	3.5" X 2.0625"	
TIME FINISHED	2:10		LENGTH	17' (4' SPACING)	
LOGGED INTERVAL	6294'-5300'				
LOGGED CEMENT TOP	5554'				

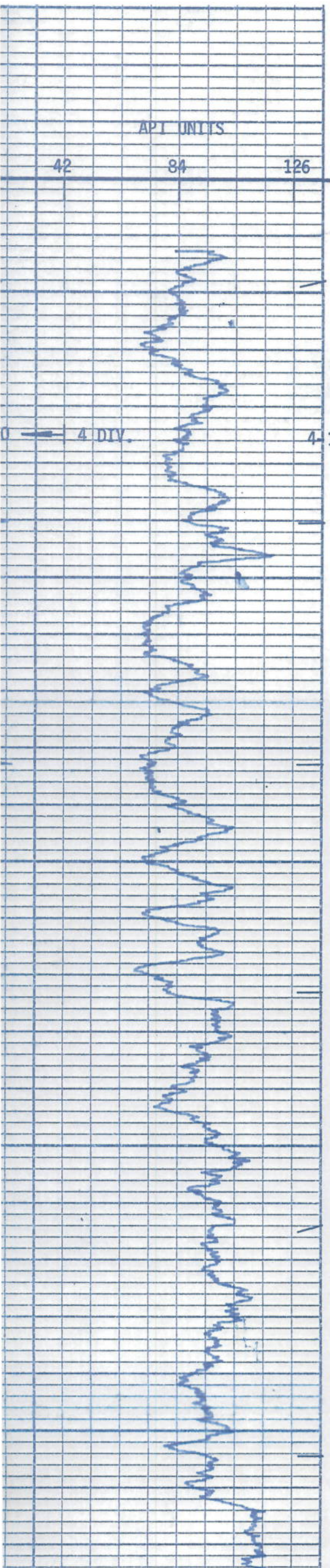
CEMENTING DATA					
	1	2	SQUEEZE NO. 1	SQUEEZE NO. 2	SQUEEZE NO. 3
DATE AND HOUR SET					
SETTING TIME (HRS.)					
TYPE CEMENT					
SACKS USED					
PRECEDING FLUID					
% ADDITIVE					
% RETARDER					
SLURRY WEIGHT					
BREAKDOWN PRESSURE					
SURFACE MAX. PRESS.					
BOTTOM MAX. PRESS.					

GAMMA RAY				NEUTRON			
RUN NO.	ONE			RUN NO.			
TOOL MODEL NO.	5547-0-1			LOG TYPE			
DIAM.	3.5"			TOOL MODEL NO.			
DETECT. MODEL NO.	5549-25			DIAM.			
TYPE	SCINT.			DETECT. MODEL NO.			
LENGTH	3"			TYPE			
DIST. TO N. SOURCE				LENGTH			
				SOURCE MODEL NO.			
				SERIAL NO.			
				SPACING			
				TYPE			
				STRENGTH			
GENERAL							
HOIST TRUCK NO.	84042						
INST. TRUCK NO.	84042						
TOOL SERIAL NO.							
LOG TICKET NO.							

LOGGING DATA											
GENERAL				GAMMA RAY				NEUTRON			
RUN NO.	DEPTHS		SPEED	T C	SENS	ZERO	API GR. UNITS	T C	SENS	ZERO	API
	FROM	TO	FT MIN	SEC	SETTINGS	DIV L OR R	PER LOG DIV	SEC	SETTINGS	DIV L OR R	PER
1	6288'	5300'	30	3	G-800 D-400 R-5	3L	10.5				

REMARKS: 10' MARKERS OMITTED BY REQUEST





5300
CASING
AND
COLLAR
LOG

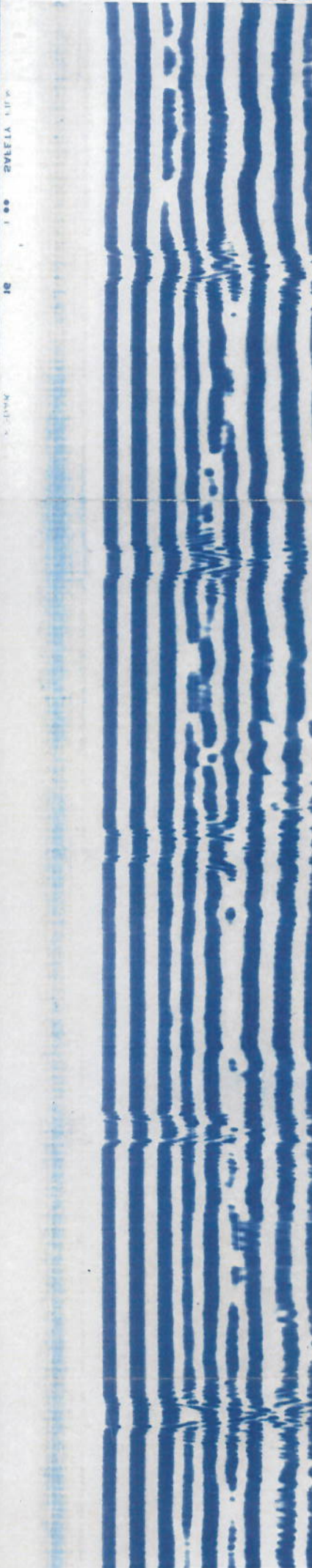
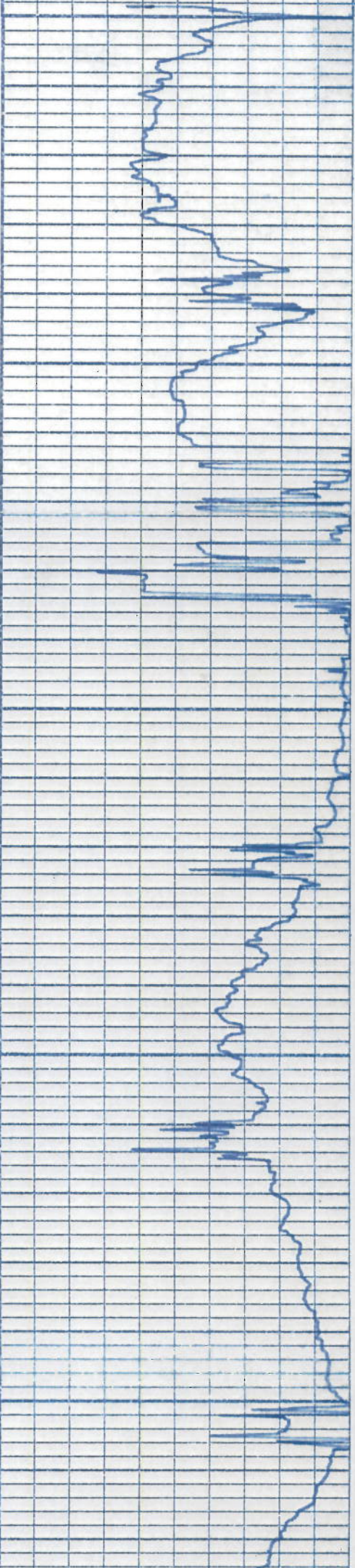
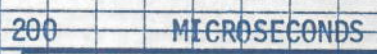
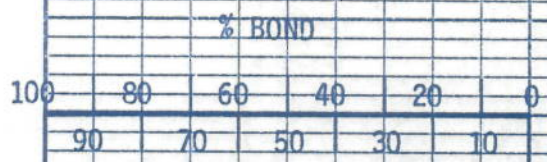
4-1/2"

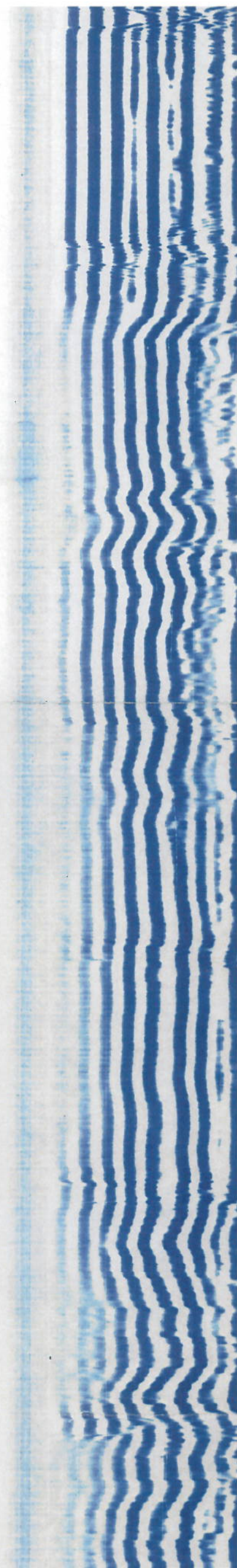
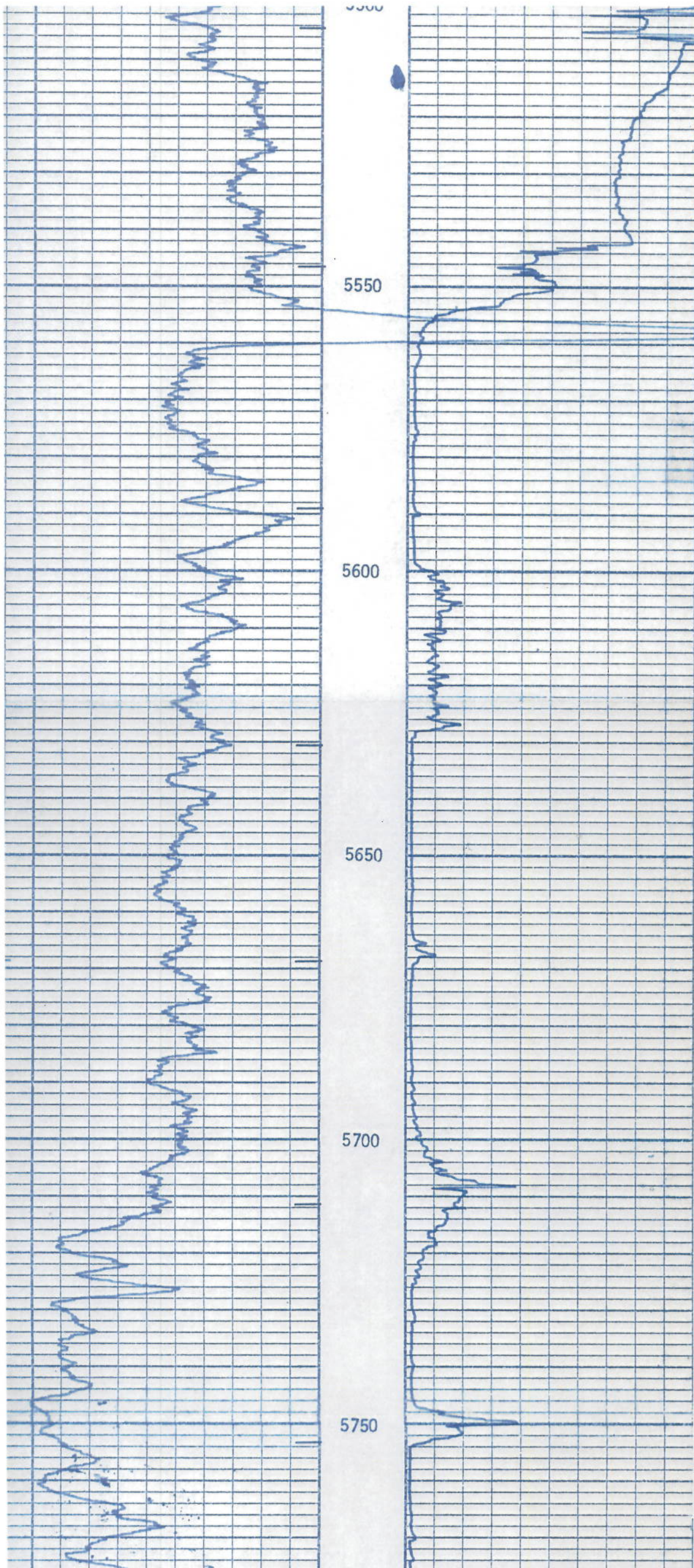
5350

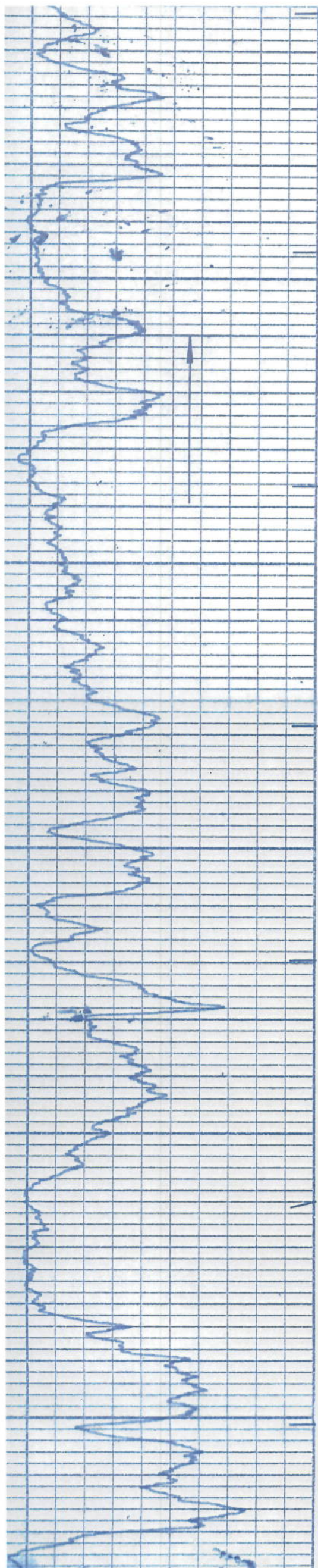
5400

5450

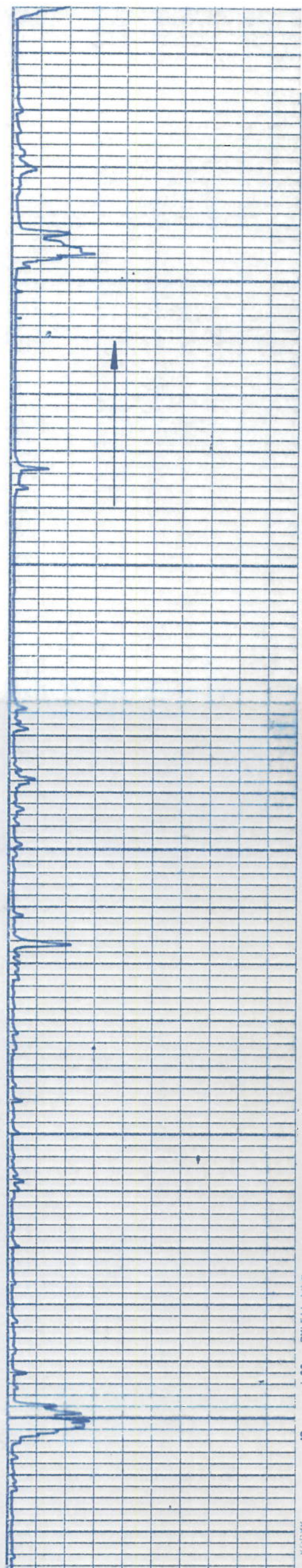
5500







5800
5850
5900
5950
6000



MAJOR 2000 00 1 00

