



# **Ursa Operating Company, LLC**

**Rio Blanco County, Colorado**

**BR C-240**

**BR C-240 32D-24-2-98**

**Wellbore #1**

**Plan: Design #1**

## **Standard Planning Report**

**18 January, 2017**



<b>Database:</b>	EDM 5000.1 Single User Db	<b>Local Co-ordinate Reference:</b>	Well BR C-240 32D-24-2-98
<b>Company:</b>	Ursa Operating Company, LLC	<b>TVD Reference:</b>	BR C-240 32D-24-2-98 @ 6332.5usft (Est KB)
<b>Project:</b>	Rio Blanco County, Colorado	<b>MD Reference:</b>	BR C-240 32D-24-2-98 @ 6332.5usft (Est KB)
<b>Site:</b>	BR C-240	<b>North Reference:</b>	True
<b>Well:</b>	BR C-240 32D-24-2-98	<b>Survey Calculation Method:</b>	Minimum Curvature
<b>Wellbore:</b>	Wellbore #1		
<b>Design:</b>	Design #1		

<b>Project</b>	Rio Blanco County, Colorado		
<b>Map System:</b>	US State Plane 1983	<b>System Datum:</b>	Mean Sea Level
<b>Geo Datum:</b>	North American Datum 1983		
<b>Map Zone:</b>	Colorado Northern Zone		Using geodetic scale factor

<b>Site</b>	BR C-240		
<b>Site Position:</b>		<b>Northing:</b>	1,203,233.70 usft
<b>From:</b>	Map	<b>Easting:</b>	2,203,189.00 usft
<b>Position Uncertainty:</b>	0.0 usft	<b>Slot Radius:</b>	13-3/16 "
		<b>Latitude:</b>	39.856238800
		<b>Longitude:</b>	-108.338695300
		<b>Grid Convergence:</b>	-1.83 °

<b>Well</b>	BR C-240 32D-24-2-98, SHL: 39.8562896, -108.3388986		
<b>Well Position</b>	<b>+N/-S</b>	18.5 usft	<b>Northing:</b>
	<b>+E/-W</b>	-57.1 usft	<b>Easting:</b>
<b>Position Uncertainty</b>	0.0 usft		<b>Wellhead Elevation:</b>
			6,332.5 usft
			<b>Latitude:</b>
			39.856289600
			<b>Longitude:</b>
			-108.338898600
			<b>Ground Level:</b>
			6,304.5 usft

<b>Wellbore</b>	Wellbore #1				
<b>Magnetics</b>	<b>Model Name</b>	<b>Sample Date</b>	<b>Declination (°)</b>	<b>Dip Angle (°)</b>	<b>Field Strength (nT)</b>
	IGRF2015	1/14/2017	9.94	65.83	51,723

<b>Design</b>	Design #1			
<b>Audit Notes:</b>				
<b>Version:</b>	<b>Phase:</b>	PROTOTYPE	<b>Tie On Depth:</b>	0.0
<b>Vertical Section:</b>	<b>Depth From (TVD) (usft)</b>	<b>+N/-S (usft)</b>	<b>+E/-W (usft)</b>	<b>Direction (°)</b>
	0.0	0.0	0.0	338.14

<b>Plan Sections</b>										
Measured Depth (usft)	Inclination (°)	Azimuth (°)	Vertical Depth (usft)	+N/-S (usft)	+E/-W (usft)	Dogleg Rate (°/100usft)	Build Rate (°/100usft)	Turn Rate (°/100usft)	TFO (°)	Target
0.0	0.00	0.00	0.0	0.0	0.0	0.00	0.00	0.00	0.00	
850.0	0.00	0.00	850.0	0.0	0.0	0.00	0.00	0.00	0.00	
1,623.7	27.08	338.14	1,595.3	166.6	-66.8	3.50	3.50	0.00	338.14	
5,651.9	27.08	338.14	5,181.7	1,868.6	-749.5	0.00	0.00	0.00	0.00	
6,425.6	0.00	0.00	5,927.0	2,035.2	-816.3	3.50	-3.50	0.00	180.00	32D-24-2-98 TGT
10,429.6	0.00	0.00	9,931.0	2,035.2	-816.3	0.00	0.00	0.00	0.00	

<b>Database:</b>	EDM 5000.1 Single User Db	<b>Local Co-ordinate Reference:</b>	Well BR C-240 32D-24-2-98
<b>Company:</b>	Ursa Operating Company, LLC	<b>TVD Reference:</b>	BR C-240 32D-24-2-98 @ 6332.5usft (Est KB)
<b>Project:</b>	Rio Blanco County, Colorado	<b>MD Reference:</b>	BR C-240 32D-24-2-98 @ 6332.5usft (Est KB)
<b>Site:</b>	BR C-240	<b>North Reference:</b>	True
<b>Well:</b>	BR C-240 32D-24-2-98	<b>Survey Calculation Method:</b>	Minimum Curvature
<b>Wellbore:</b>	Wellbore #1		
<b>Design:</b>	Design #1		

Planned Survey										
Measured Depth (usft)	Inclination (°)	Azimuth (°)	Vertical Depth (usft)	+N/-S (usft)	+E/-W (usft)	Vertical Section (usft)	Dogleg Rate (°/100usft)	Build Rate (°/100usft)	Turn Rate (°/100usft)	
0.0	0.00	0.00	0.0	0.0	0.0	0.0	0.00	0.00	0.00	
0.1	0.00	0.00	0.1	0.0	0.0	0.0	0.00	0.00	0.00	
<b>SHL 39.8562896 -108.3388986</b>										
100.0	0.00	0.00	100.0	0.0	0.0	0.0	0.00	0.00	0.00	
200.0	0.00	0.00	200.0	0.0	0.0	0.0	0.00	0.00	0.00	
300.0	0.00	0.00	300.0	0.0	0.0	0.0	0.00	0.00	0.00	
400.0	0.00	0.00	400.0	0.0	0.0	0.0	0.00	0.00	0.00	
500.0	0.00	0.00	500.0	0.0	0.0	0.0	0.00	0.00	0.00	
595.0	0.00	0.00	595.0	0.0	0.0	0.0	0.00	0.00	0.00	
<b>Green River Fm - Mahogany Bench</b>										
600.0	0.00	0.00	600.0	0.0	0.0	0.0	0.00	0.00	0.00	
652.0	0.00	0.00	652.0	0.0	0.0	0.0	0.00	0.00	0.00	
<b>Dissolution Surface</b>										
700.0	0.00	0.00	700.0	0.0	0.0	0.0	0.00	0.00	0.00	
800.0	0.00	0.00	800.0	0.0	0.0	0.0	0.00	0.00	0.00	
850.0	0.00	0.00	850.0	0.0	0.0	0.0	0.00	0.00	0.00	
<b>Start Build 3.50</b>										
900.0	1.75	338.14	900.0	0.7	-0.3	0.8	3.50	3.50	0.00	
1,000.0	5.25	338.14	999.8	6.4	-2.6	6.9	3.50	3.50	0.00	
1,100.0	8.75	338.14	1,099.0	17.7	-7.1	19.1	3.50	3.50	0.00	
1,200.0	12.25	338.14	1,197.3	34.6	-13.9	37.3	3.50	3.50	0.00	
1,300.0	15.75	338.14	1,294.4	57.0	-22.9	61.5	3.50	3.50	0.00	
1,400.0	19.25	338.14	1,389.7	84.9	-34.1	91.5	3.50	3.50	0.00	
1,500.0	22.75	338.14	1,483.1	118.2	-47.4	127.4	3.50	3.50	0.00	
1,600.0	26.25	338.14	1,574.0	156.7	-62.8	168.8	3.50	3.50	0.00	
1,623.7	27.08	338.14	1,595.3	166.6	-66.8	179.5	3.50	3.50	0.00	
<b>Start 4028.1 hold at 1623.7 MD</b>										
1,700.0	27.08	338.14	1,663.2	198.8	-79.7	214.2	0.00	0.00	0.00	
1,800.0	27.08	338.14	1,752.2	241.1	-96.7	259.7	0.00	0.00	0.00	
1,805.4	27.08	338.14	1,757.0	243.3	-97.6	262.2	0.00	0.00	0.00	
<b>Green River Fm - Garden Gulch Mbr</b>										
1,900.0	27.08	338.14	1,841.2	283.3	-113.6	305.2	0.00	0.00	0.00	
1,994.1	27.08	338.14	1,925.0	323.1	-129.6	348.1	0.00	0.00	0.00	
<b>Wasatch</b>										
2,000.0	27.08	338.14	1,930.3	325.6	-130.6	350.8	0.00	0.00	0.00	
2,100.0	27.08	338.14	2,019.3	367.8	-147.5	396.3	0.00	0.00	0.00	
2,200.0	27.08	338.14	2,108.3	410.1	-164.5	441.8	0.00	0.00	0.00	
2,300.0	27.08	338.14	2,197.4	452.3	-181.4	487.3	0.00	0.00	0.00	
2,400.0	27.08	338.14	2,286.4	494.6	-198.4	532.9	0.00	0.00	0.00	
2,500.0	27.08	338.14	2,375.4	536.8	-215.3	578.4	0.00	0.00	0.00	
2,600.0	27.08	338.14	2,464.5	579.1	-232.3	623.9	0.00	0.00	0.00	
2,700.0	27.08	338.14	2,553.5	621.3	-249.2	669.4	0.00	0.00	0.00	
2,800.0	27.08	338.14	2,642.5	663.6	-266.2	715.0	0.00	0.00	0.00	
2,900.0	27.08	338.14	2,731.6	705.8	-283.1	760.5	0.00	0.00	0.00	
3,000.0	27.08	338.14	2,820.6	748.1	-300.1	806.0	0.00	0.00	0.00	
3,100.0	27.08	338.14	2,909.7	790.3	-317.0	851.5	0.00	0.00	0.00	
3,200.0	27.08	338.14	2,998.7	832.6	-334.0	897.1	0.00	0.00	0.00	
3,300.0	27.08	338.14	3,087.7	874.8	-350.9	942.6	0.00	0.00	0.00	
3,400.0	27.08	338.14	3,176.8	917.1	-367.9	988.1	0.00	0.00	0.00	
3,500.0	27.08	338.14	3,265.8	959.4	-384.8	1,033.6	0.00	0.00	0.00	
3,600.0	27.08	338.14	3,354.8	1,001.6	-401.8	1,079.2	0.00	0.00	0.00	
3,700.0	27.08	338.14	3,443.9	1,043.9	-418.7	1,124.7	0.00	0.00	0.00	

<b>Database:</b>	EDM 5000.1 Single User Db	<b>Local Co-ordinate Reference:</b>	Well BR C-240 32D-24-2-98
<b>Company:</b>	Ursa Operating Company, LLC	<b>TVD Reference:</b>	BR C-240 32D-24-2-98 @ 6332.5usft (Est KB)
<b>Project:</b>	Rio Blanco County, Colorado	<b>MD Reference:</b>	BR C-240 32D-24-2-98 @ 6332.5usft (Est KB)
<b>Site:</b>	BR C-240	<b>North Reference:</b>	True
<b>Well:</b>	BR C-240 32D-24-2-98	<b>Survey Calculation Method:</b>	Minimum Curvature
<b>Wellbore:</b>	Wellbore #1		
<b>Design:</b>	Design #1		

Planned Survey									
Measured Depth (usft)	Inclination (°)	Azimuth (°)	Vertical Depth (usft)	+N/-S (usft)	+E/-W (usft)	Vertical Section (usft)	Dogleg Rate (°/100usft)	Build Rate (°/100usft)	Turn Rate (°/100usft)
3,763.0	27.08	338.14	3,500.0	1,070.5	-429.4	1,153.4	0.00	0.00	0.00
<b>Surface Casing</b>									
3,800.0	27.08	338.14	3,532.9	1,086.1	-435.7	1,170.2	0.00	0.00	0.00
3,900.0	27.08	338.14	3,621.9	1,128.4	-452.6	1,215.8	0.00	0.00	0.00
4,000.0	27.08	338.14	3,711.0	1,170.6	-469.5	1,261.3	0.00	0.00	0.00
4,100.0	27.08	338.14	3,800.0	1,212.9	-486.5	1,306.8	0.00	0.00	0.00
4,200.0	27.08	338.14	3,889.1	1,255.1	-503.4	1,352.3	0.00	0.00	0.00
4,300.0	27.08	338.14	3,978.1	1,297.4	-520.4	1,397.9	0.00	0.00	0.00
4,400.0	27.08	338.14	4,067.1	1,339.6	-537.3	1,443.4	0.00	0.00	0.00
4,500.0	27.08	338.14	4,156.2	1,381.9	-554.3	1,488.9	0.00	0.00	0.00
4,600.0	27.08	338.14	4,245.2	1,424.1	-571.2	1,534.4	0.00	0.00	0.00
4,700.0	27.08	338.14	4,334.2	1,466.4	-588.2	1,580.0	0.00	0.00	0.00
4,735.7	27.08	338.14	4,366.0	1,481.5	-594.2	1,596.2	0.00	0.00	0.00
<b>Ft Union</b>									
4,800.0	27.08	338.14	4,423.3	1,508.6	-605.1	1,625.5	0.00	0.00	0.00
4,900.0	27.08	338.14	4,512.3	1,550.9	-622.1	1,671.0	0.00	0.00	0.00
5,000.0	27.08	338.14	4,601.3	1,593.1	-639.0	1,716.5	0.00	0.00	0.00
5,100.0	27.08	338.14	4,690.4	1,635.4	-656.0	1,762.1	0.00	0.00	0.00
5,200.0	27.08	338.14	4,779.4	1,677.7	-672.9	1,807.6	0.00	0.00	0.00
5,300.0	27.08	338.14	4,868.5	1,719.9	-689.9	1,853.1	0.00	0.00	0.00
5,400.0	27.08	338.14	4,957.5	1,762.2	-706.8	1,898.6	0.00	0.00	0.00
5,500.0	27.08	338.14	5,046.5	1,804.4	-723.8	1,944.2	0.00	0.00	0.00
5,600.0	27.08	338.14	5,135.6	1,846.7	-740.7	1,989.7	0.00	0.00	0.00
5,651.9	27.08	338.14	5,181.7	1,868.6	-749.5	2,013.3	0.00	0.00	0.00
<b>Start Drop -3.50</b>									
5,700.0	25.40	338.14	5,224.9	1,888.3	-757.4	2,034.6	3.50	-3.50	0.00
5,800.0	21.90	338.14	5,316.5	1,925.5	-772.4	2,074.7	3.50	-3.50	0.00
5,900.0	18.40	338.14	5,410.4	1,957.5	-785.2	2,109.1	3.50	-3.50	0.00
6,000.0	14.90	338.14	5,506.2	1,984.1	-795.8	2,137.8	3.50	-3.50	0.00
6,100.0	11.40	338.14	5,603.5	2,005.2	-804.3	2,160.5	3.50	-3.50	0.00
6,200.0	7.90	338.14	5,702.1	2,020.7	-810.5	2,177.2	3.50	-3.50	0.00
6,235.2	6.67	338.14	5,737.0	2,024.9	-812.2	2,181.7	3.50	-3.50	0.00
<b>Ohio Creek</b>									
6,300.0	4.40	338.14	5,801.5	2,030.7	-814.5	2,188.0	3.50	-3.50	0.00
6,400.0	0.90	338.14	5,901.4	2,035.0	-816.2	2,192.6	3.50	-3.50	0.00
6,425.6	0.00	0.00	5,927.0	2,035.2	-816.3	2,192.8	3.50	-3.50	0.00
<b>Start 4004.0 hold at 6425.6 MD - Back to Vertical - Williams Fork - Top of Gas - 32D-24-2-98 TGT</b>									
6,500.0	0.00	0.00	6,001.4	2,035.2	-816.3	2,192.8	0.00	0.00	0.00
6,600.0	0.00	0.00	6,101.4	2,035.2	-816.3	2,192.8	0.00	0.00	0.00
6,700.0	0.00	0.00	6,201.4	2,035.2	-816.3	2,192.8	0.00	0.00	0.00
6,800.0	0.00	0.00	6,301.4	2,035.2	-816.3	2,192.8	0.00	0.00	0.00
6,900.0	0.00	0.00	6,401.4	2,035.2	-816.3	2,192.8	0.00	0.00	0.00
7,000.0	0.00	0.00	6,501.4	2,035.2	-816.3	2,192.8	0.00	0.00	0.00
7,100.0	0.00	0.00	6,601.4	2,035.2	-816.3	2,192.8	0.00	0.00	0.00
7,200.0	0.00	0.00	6,701.4	2,035.2	-816.3	2,192.8	0.00	0.00	0.00
7,300.0	0.00	0.00	6,801.4	2,035.2	-816.3	2,192.8	0.00	0.00	0.00
7,400.0	0.00	0.00	6,901.4	2,035.2	-816.3	2,192.8	0.00	0.00	0.00
7,500.0	0.00	0.00	7,001.4	2,035.2	-816.3	2,192.8	0.00	0.00	0.00
7,600.0	0.00	0.00	7,101.4	2,035.2	-816.3	2,192.8	0.00	0.00	0.00
7,700.0	0.00	0.00	7,201.4	2,035.2	-816.3	2,192.8	0.00	0.00	0.00
7,800.0	0.00	0.00	7,301.4	2,035.2	-816.3	2,192.8	0.00	0.00	0.00

<b>Database:</b>	EDM 5000.1 Single User Db	<b>Local Co-ordinate Reference:</b>	Well BR C-240 32D-24-2-98
<b>Company:</b>	Ursa Operating Company, LLC	<b>TVD Reference:</b>	BR C-240 32D-24-2-98 @ 6332.5usft (Est KB)
<b>Project:</b>	Rio Blanco County, Colorado	<b>MD Reference:</b>	BR C-240 32D-24-2-98 @ 6332.5usft (Est KB)
<b>Site:</b>	BR C-240	<b>North Reference:</b>	True
<b>Well:</b>	BR C-240 32D-24-2-98	<b>Survey Calculation Method:</b>	Minimum Curvature
<b>Wellbore:</b>	Wellbore #1		
<b>Design:</b>	Design #1		

Planned Survey										
Measured Depth (usft)	Inclination (°)	Azimuth (°)	Vertical Depth (usft)	+N/-S (usft)	+E/-W (usft)	Vertical Section (usft)	Dogleg Rate (°/100usft)	Build Rate (°/100usft)	Turn Rate (°/100usft)	
7,900.0	0.00	0.00	7,401.4	2,035.2	-816.3	2,192.8	0.00	0.00	0.00	
8,000.0	0.00	0.00	7,501.4	2,035.2	-816.3	2,192.8	0.00	0.00	0.00	
8,100.0	0.00	0.00	7,601.4	2,035.2	-816.3	2,192.8	0.00	0.00	0.00	
8,200.0	0.00	0.00	7,701.4	2,035.2	-816.3	2,192.8	0.00	0.00	0.00	
8,300.0	0.00	0.00	7,801.4	2,035.2	-816.3	2,192.8	0.00	0.00	0.00	
8,400.0	0.00	0.00	7,901.4	2,035.2	-816.3	2,192.8	0.00	0.00	0.00	
8,500.0	0.00	0.00	8,001.4	2,035.2	-816.3	2,192.8	0.00	0.00	0.00	
8,600.0	0.00	0.00	8,101.4	2,035.2	-816.3	2,192.8	0.00	0.00	0.00	
8,700.0	0.00	0.00	8,201.4	2,035.2	-816.3	2,192.8	0.00	0.00	0.00	
8,800.0	0.00	0.00	8,301.4	2,035.2	-816.3	2,192.8	0.00	0.00	0.00	
8,900.0	0.00	0.00	8,401.4	2,035.2	-816.3	2,192.8	0.00	0.00	0.00	
9,000.0	0.00	0.00	8,501.4	2,035.2	-816.3	2,192.8	0.00	0.00	0.00	
9,100.0	0.00	0.00	8,601.4	2,035.2	-816.3	2,192.8	0.00	0.00	0.00	
9,200.0	0.00	0.00	8,701.4	2,035.2	-816.3	2,192.8	0.00	0.00	0.00	
9,300.0	0.00	0.00	8,801.4	2,035.2	-816.3	2,192.8	0.00	0.00	0.00	
9,400.0	0.00	0.00	8,901.4	2,035.2	-816.3	2,192.8	0.00	0.00	0.00	
9,500.0	0.00	0.00	9,001.4	2,035.2	-816.3	2,192.8	0.00	0.00	0.00	
9,534.6	0.00	0.00	9,036.0	2,035.2	-816.3	2,192.8	0.00	0.00	0.00	
Cameo										
9,600.0	0.00	0.00	9,101.4	2,035.2	-816.3	2,192.8	0.00	0.00	0.00	
9,700.0	0.00	0.00	9,201.4	2,035.2	-816.3	2,192.8	0.00	0.00	0.00	
9,800.0	0.00	0.00	9,301.4	2,035.2	-816.3	2,192.8	0.00	0.00	0.00	
9,900.0	0.00	0.00	9,401.4	2,035.2	-816.3	2,192.8	0.00	0.00	0.00	
10,000.0	0.00	0.00	9,501.4	2,035.2	-816.3	2,192.8	0.00	0.00	0.00	
10,079.6	0.00	0.00	9,581.0	2,035.2	-816.3	2,192.8	0.00	0.00	0.00	
Rollins										
10,100.0	0.00	0.00	9,601.4	2,035.2	-816.3	2,192.8	0.00	0.00	0.00	
10,200.0	0.00	0.00	9,701.4	2,035.2	-816.3	2,192.8	0.00	0.00	0.00	
10,300.0	0.00	0.00	9,801.4	2,035.2	-816.3	2,192.8	0.00	0.00	0.00	
10,400.0	0.00	0.00	9,901.4	2,035.2	-816.3	2,192.8	0.00	0.00	0.00	
10,429.6	0.00	0.00	9,931.0	2,035.2	-816.3	2,192.8	0.00	0.00	0.00	
TD at 10429.6 - BHL 39.8618764 -108.3418065										

Design Targets										
Target Name	Dip Angle (°)	Dip Dir. (°)	TVD (usft)	+N/-S (usft)	+E/-W (usft)	Northing (usft)	Easting (usft)	Latitude	Longitude	
32D-24-2-98 TGT	0.00	0.00	5,927.0	2,035.2	-816.3	1,205,314.23	2,202,381.80	39.861876400	-108.341806500	
- hit/miss target										
- Shape										
- plan hits target center										
- Rectangle (sides W100.0 H40.0 D4,004.0)										

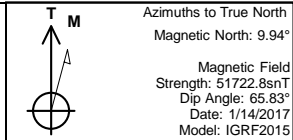
<b>Database:</b>	EDM 5000.1 Single User Db	<b>Local Co-ordinate Reference:</b>	Well BR C-240 32D-24-2-98
<b>Company:</b>	Ursa Operating Company, LLC	<b>TVD Reference:</b>	BR C-240 32D-24-2-98 @ 6332.5usft (Est KB)
<b>Project:</b>	Rio Blanco County, Colorado	<b>MD Reference:</b>	BR C-240 32D-24-2-98 @ 6332.5usft (Est KB)
<b>Site:</b>	BR C-240	<b>North Reference:</b>	True
<b>Well:</b>	BR C-240 32D-24-2-98	<b>Survey Calculation Method:</b>	Minimum Curvature
<b>Wellbore:</b>	Wellbore #1		
<b>Design:</b>	Design #1		

Formations					
Measured Depth (usft)	Vertical Depth (usft)	Name	Lithology	Dip (°)	Dip Direction (°)
595.0	595.0	Green River Fm - Mahogany Bench		0.00	
652.0	652.0	Dissolution Surface		0.00	
1,805.4	1,757.0	Green River Fm - Garden Gulch Mbr		0.00	
1,994.1	1,925.0	Wasatch		0.00	
4,735.7	4,366.0	Ft Union		0.00	
6,235.2	5,737.0	Ohio Creek		0.00	
6,425.6	5,927.0	Williams Fork		0.00	
6,425.6	5,927.0	Top of Gas		0.00	
9,534.6	9,036.0	Cameo		0.00	
10,079.6	9,581.0	Rollins		0.00	

Plan Annotations				
Measured Depth (usft)	Vertical Depth (usft)	Local Coordinates		Comment
		+N/-S (usft)	+E/-W (usft)	
0.1	0.1	0.0	0.0	SHL 39.8562896 -108.3388986
850.0	850.0	0.0	0.0	Start Build 3.50
1,623.7	1,595.3	166.6	-66.8	Start 4028.1 hold at 1623.7 MD
3,763.0	3,500.0	1,070.5	-429.4	Surface Casing
5,651.9	5,181.7	1,868.6	-749.5	Start Drop -3.50
6,425.6	5,927.0	2,035.2	-816.3	Start 4004.0 hold at 6425.6 MD
6,425.6	5,927.0	2,035.2	-816.3	Back to Vertical
10,429.6	9,931.0	2,035.2	-816.3	TD at 10429.6
10,429.6	9,931.0	2,035.2	-816.3	BHL 39.8618764 -108.3418065



Well Name: BR C-240 32D-24-2-98  
Surface Location: BR C-240  
North American Datum 1983 US State Plane 1983 , Colorado Northern Zone  
Ground Elevation: 6304.5  
+N/-S +E/-W Northing Easting Latitude Longitude Slot  
0.0 0.0 1203254.03 2203132.55 39.856289600 -108.338898600  
Est KB BR C-240 32D-24-2-98 @ 6332.5usft (Est KB)



BR C-240  
BR C-240 32D-24-2-98  
Design #1  
9:24, January 18 2017

#### WELLBORE TARGET DETAILS (MAP CO-ORDINATES AND LAT/LONG)

Name	TVD	+N/-S	+E/-W	Northing	Easting	Latitude	Longitude	Shape
32D-24-2-98 TGT	5927.0	2035.2	-816.3	1205314.23	2202381.80	39.861876400	-108.341806500	Rectangle (Sides: L40.0 W100.0)

#### SECTION DETAILS

Sec	MD	Inc	Azi	TVD	+N/-S	+E/-W	Dleg	TFace	VSect	Target
1	0.0	0.00	0.00	0.0	0.0	0.0	0.00	0.00	0.0	
2	850.0	0.00	0.00	850.0	0.0	0.0	0.00	0.00	0.0	
3	1623.7	27.08	338.14	1595.3	166.6	-66.8	3.50	338.14	179.5	
4	5651.9	27.08	338.14	5181.7	1868.6	-749.5	0.00	0.00	2013.3	
5	6425.6	0.00	0.00	5927.0	2035.2	-816.3	3.50	180.00	2192.8	32D-24-2-98 TGT
6	10429.6	0.00	0.00	9931.0	2035.2	-816.3	0.00	0.00	2192.8	

#### ANNOTATIONS

TVD	MD	Annotation
0.1	0.1	SHL 39.8562896 -108.3388986
850.0	850.0	Start Build 3.50
1595.3	1623.7	Start 4028.1 hold at 1623.7 MD
3500.0	3763.0	Surface Casing
5181.7	5651.9	Start Drop -3.50
5927.0	6425.6	Back to Vertical
5927.0	6425.6	Start 4004.0 hold at 6425.6 MD
9931.0	10429.6	TD at 10429.6
9931.0	10429.6	BHL 39.8618764 -108.3418065

#### FORMATION TOP DETAILS

TVDPath	MDPath	Formation	DipAngle	DipDir
595.0	595.0	Mahogany Bench	0.00	
652.0	652.0	Dissolution Surface	0.00	
1757.0	1805.4	Garden Gulch Mbr	0.00	
1925.0	1994.1	Wasatch	0.00	
4366.0	4735.7	Ft Union	0.00	
5737.0	6235.2	Ohio Creek	0.00	
5927.0	6425.6	Top of Gas	0.00	
5927.0	6425.6	Williams Fork	0.00	
9036.0	9534.6	Cameo	0.00	
9581.0	10079.6	Rollins	0.00	

