



GAMMA RAY

2" = 100' FEET MD

COMPANY : EXTRACTION OIL &amp; GAS

WELL : BRENNIMAN 3

FIELD : WATTENBERG

COUNTY : WELD

STATE : COLORADO

COUNTRY : U.S.A.

UWI : 05-123-40422

COMPANY : EXTRACTION OIL &amp; GAS

WELL : BRENNIMAN 3

FIELD : WATTENBERG

COUNTY : WELD

STATE : COLORADO

COUNTRY : U.S.A.

UWI : 05-123-40422

WELL LOCATION

LAT:40°29'33.778"N LONG:104°54'0.191"W  
N:1422901.40 ft E:3166861.64 ft

OTHER SERVICES

DIRECTIONAL

ROP

DEPTH REF. : GL 4796' &amp; KB 25'

REF. HEIGHT : 25.000 ft GL 4796' &amp; KB 25' to Ground Level

GROUND LEVEL : 4796.000 ft G.L. to MEAN SEA LEVEL

## BOREHOLE RECORD

## DEVIATION RECORD

HOLE SIZE in	FROM ft	TO ft	INCLINATION deg	FROM ft	TO ft
7.875	1568	17320	0 - 4	0	1938
			4 - 27	1938	7144
			27 - 90	7144	8408
			90 +/- 8	8408	17320

## CASING RECORD

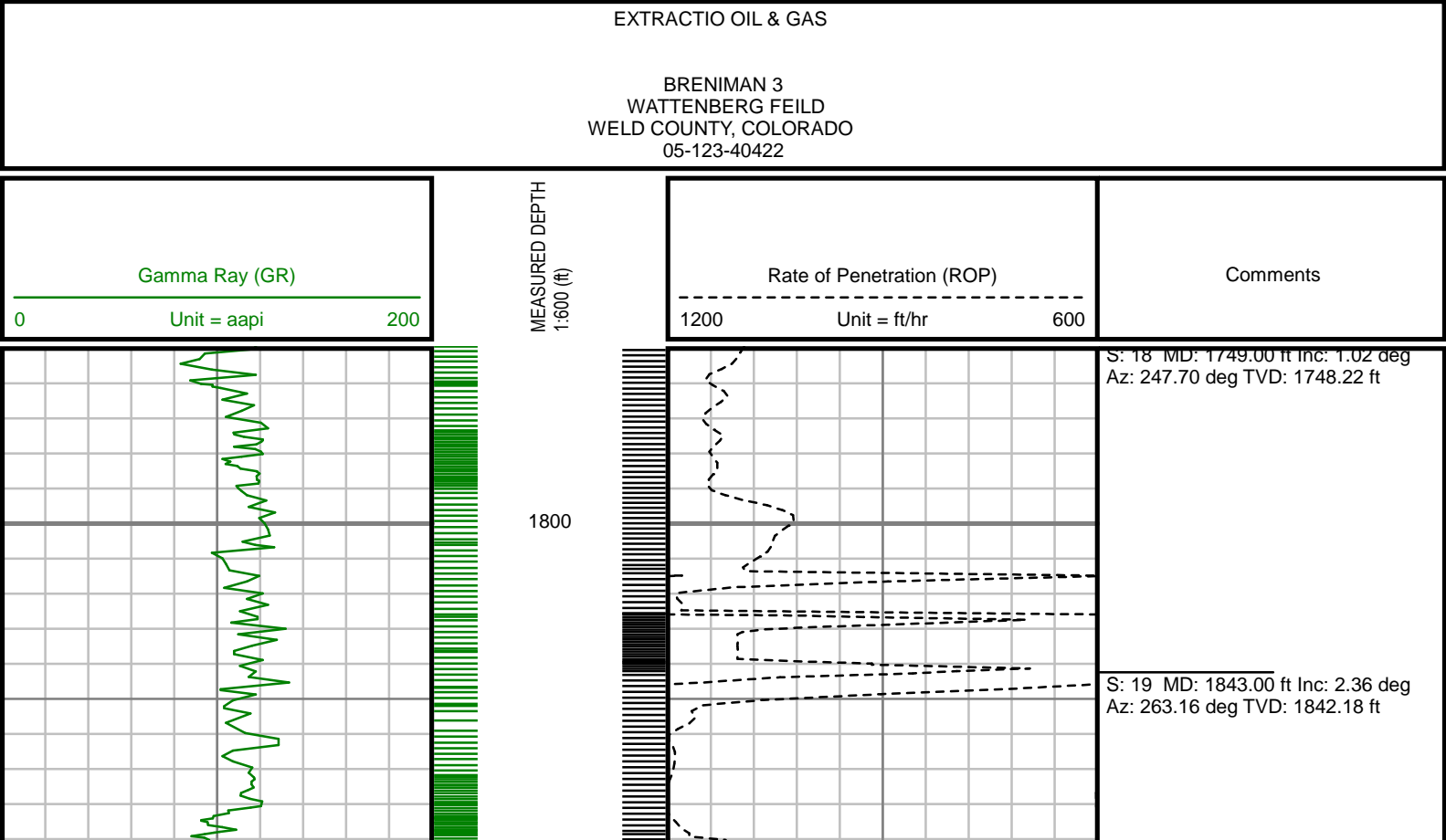
CASING SIZE in	FROM ft	TO ft	DRILLING CO. : RIG : LWD UNIT NO. : MWD-00029-DISTRICT : CASPER SPUD DATE : 06/20/2016 LWD START DATE : 06/20/2016 DEPTH : 1568 ft LWD END DATE : 06/20/2016 DEPTH : 17267 ft TOTAL DEPTH : 15699 ft		
9.675	0	1568			

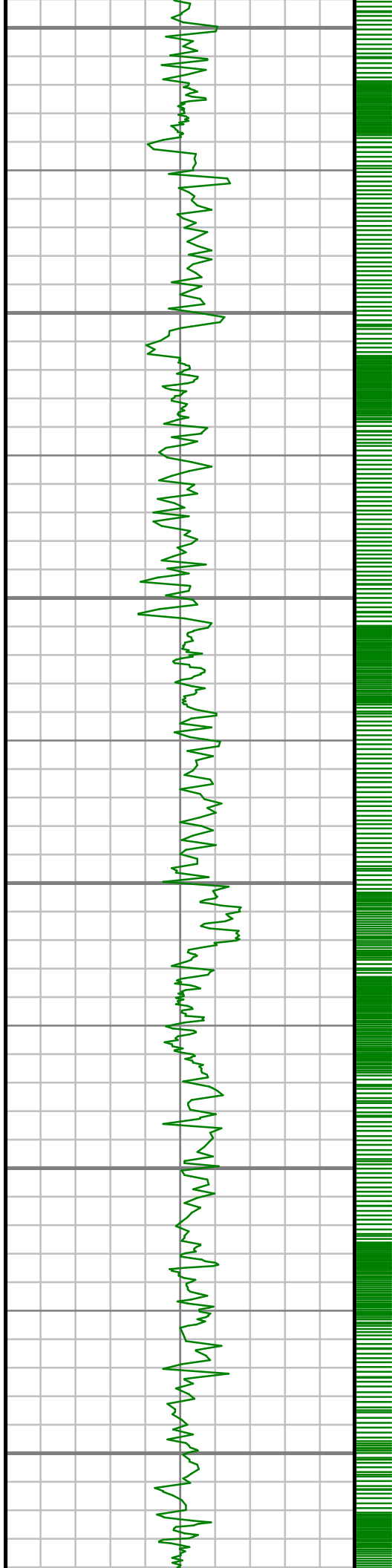
## Run Data

RUN NUMBER	1	2			
START DATE	06/20/2016	06/22/2016			
START TIME	1545	0410			
END DATE	06/22/2016	06/24/2016			
END TIME	0410	1745			
DEPTH IN (ft)	1568	9211			
DEPTH OUT (ft)	9211	17320			
LOG TOP (ft)	1568	9159			
LOG BOTTOM (ft)	9159	17267			
HOLE SIZE (in)	7.875	7.875			
MUD DATA @ (ft)	7838	15816			
MUD TYPE	OIL-BASED	OIL-BASED			
DENSITY (lb / gal)	8.3	8.6			
VISCOSITY (s / qt)	37	38			
pH	-	-			
FLUID LOSS (cm <sup>3</sup> / 30)	-	-			
SALINITY (ppm)	193147	193147			
Rm (ohmm @ deg F)	-	-			
Rmf (ohmm @ deg F)	-	-			
MAX TEMP (deg F)	-	-			
Rm @ MAX TEMP (ohmm)	255	263			
LWD ENGINEER #1	J. WALSH	J. WALSH			
LWD ENGINEER #2	C. JAQUES	C. JAQUES			
LWD ENGINEER #3	-	-			
LOG WITNESS #1	V. SPIESS	V. SPIESS			
LOG WITNESS #2	-	-			

Remarks
EXTRACTION OIL & GAS PRODUCTION AFE# 14-719
SCIENTIFIC DRILLING INTERNATIONAL JOB# 368183
ALL REFERENCES IN THE DEPTH TRACK ARE AT BIT DEPTH.
ALL DATA IS MEMORY DATA UNLESS STATED OTHERWISE.
FLAT AVERAGE FILTER OF 1.00 FT APPLIED TO GAMMA RAY CURVE
FLAT AVERAGE FILTER OF 1.00 FT APPLIED TO RATE OF PENETRATION CURVE
RUN #1: MWD GAMMA LOGGING RUN
SENSOR S/N: PULSER-128-275 / MP6-132 / MWD EYE-0730 / GAMMA RAY-1051
BIT TO SENSOR OFFSET: MWD EYE-64.75 FT. / GAMMA RAY-66.22 FT.
RUN #1: MWD GAMMA LOGGING RUN
SENSOR S/N: PULSER-128-324 / MP6-549 / MWD EYE-774 / GAMMA RAY-1332
BIT TO SENSOR OFFSET: MWD EYE-64.75 FT. / GAMMA RAY-66.22 FT.
MNEMONICS LIST:
GR = GAMMA RAY
ROP = RATE OF PENETRATION

All interpretations are opinions based on inferences from electrical or other measurements and we cannot, and do not guarantee the accuracy or correctness of any interpretations, and we shall not, except in the case of gross or willful negligence on our part, be liable or responsible for any loss, costs, damages or expenses incurred or sustained by anyone resulting from any interpretation made by any of our officers, agents or employees. These interpretations are also subject to our general terms and conditions as set out in our current price schedule.





1900

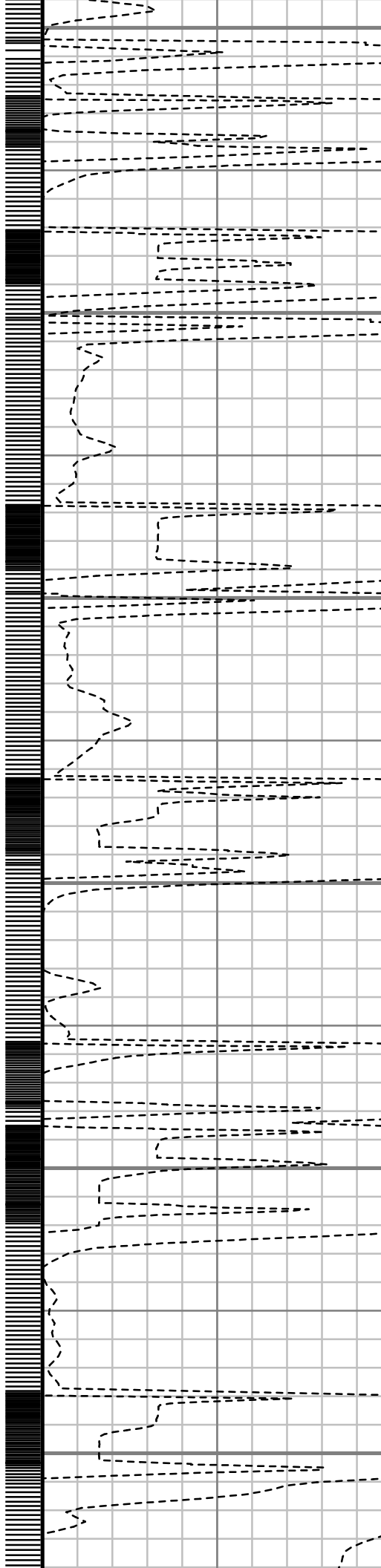
2000

2100

2200

2300

2400



S: 20 MD: 1938.00 ft Inc: 3.66 deg  
Az: 261.04 deg TVD: 1937.04 ft

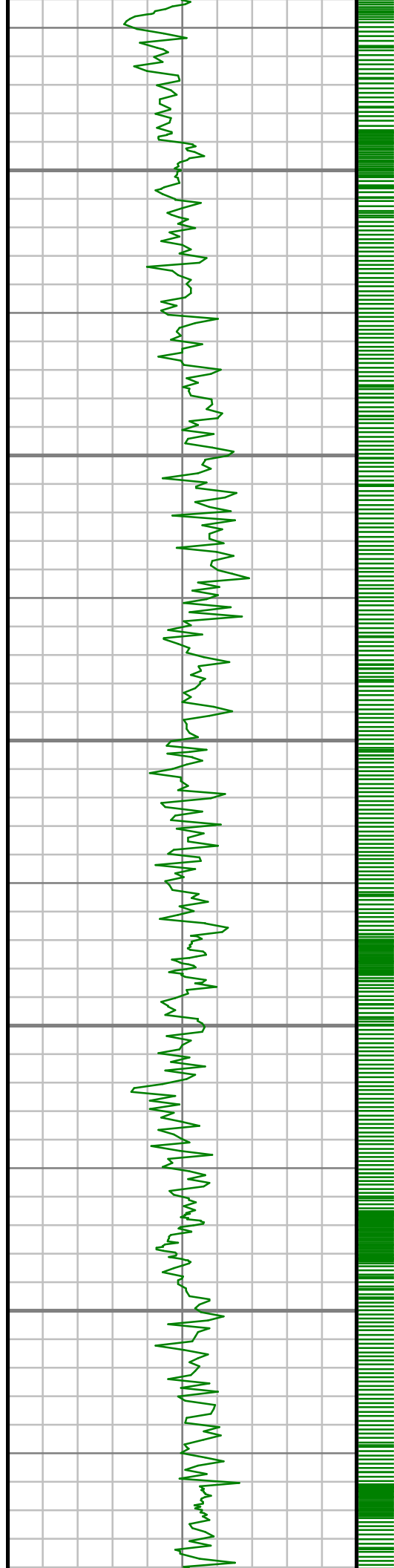
S: 21 MD: 2032.00 ft Inc: 4.95 deg  
Az: 284.77 deg TVD: 2030.78 ft

S: 22 MD: 2127.00 ft Inc: 7.34 deg  
Az: 292.53 deg TVD: 2125.23 ft

S: 23 MD: 2221.00 ft Inc: 9.80 deg  
Az: 293.65 deg TVD: 2218.18 ft

S: 24 MD: 2316.00 ft Inc: 14.18 deg  
Az: 279.10 deg TVD: 2311.10 ft

S: 25 MD: 2411.00 ft Inc: 16.55 deg  
Az: 266.47 deg TVD: 2402.73 ft



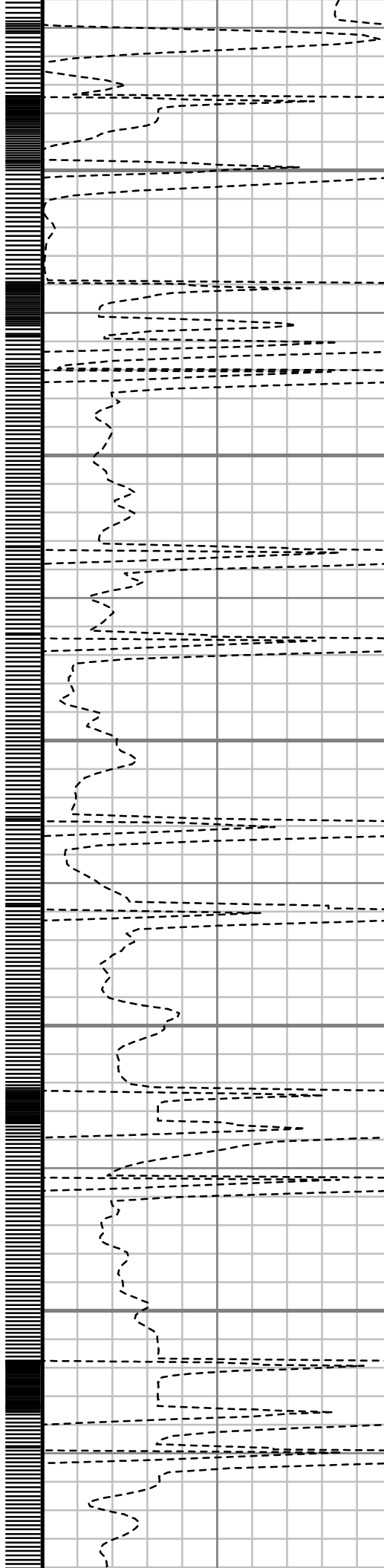
2500

2600

2700

2800

2900



S: 26 MD: 2506.00 ft Inc: 21.32 deg  
Az: 266.55 deg TVD: 2492.56 ft

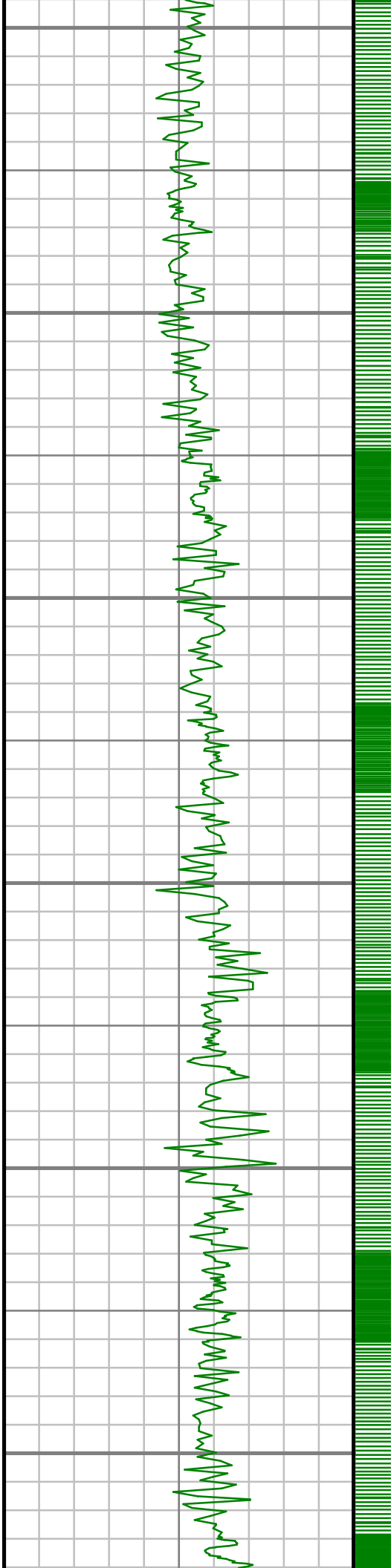
S: 27 MD: 2601.00 ft Inc: 21.76 deg  
Az: 264.94 deg TVD: 2580.93 ft

S: 28 MD: 2695.00 ft Inc: 20.53 deg  
Az: 264.89 deg TVD: 2668.60 ft

S: 29 MD: 2790.00 ft Inc: 19.10 deg  
Az: 263.93 deg TVD: 2757.97 ft

S: 30 MD: 2885.00 ft Inc: 19.21 deg  
Az: 263.38 deg TVD: 2847.71 ft

S: 31 MD: 2979.00 ft Inc: 19.44 deg  
Az: 262.99 deg TVD: 2936.41 ft



3000

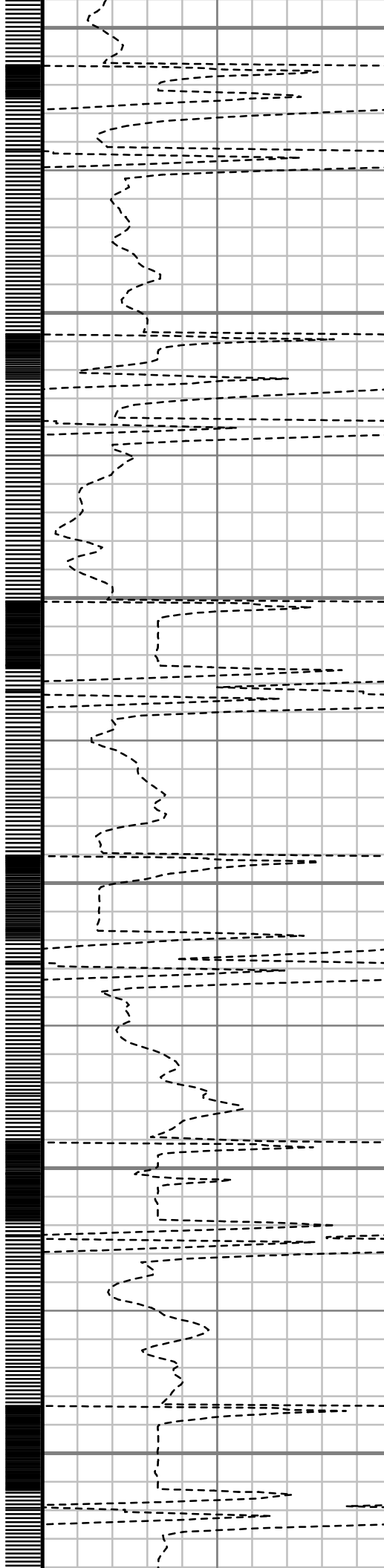
3100

3200

3300

3400

3500



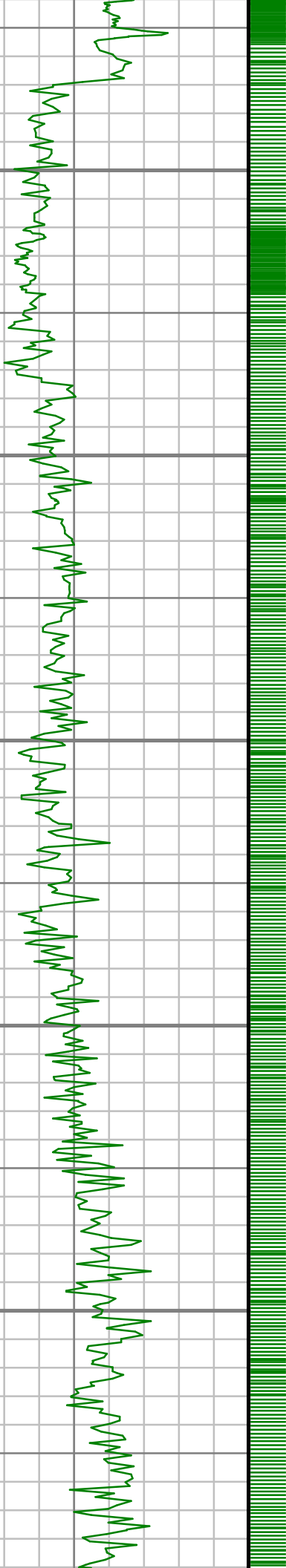
S: 32 MD: 3074.00 ft Inc: 17.99 deg  
Az: 264.60 deg TVD: 3026.39 ft

S: 33 MD: 3169.00 ft Inc: 15.63 deg  
Az: 271.38 deg TVD: 3117.33 ft

S: 34 MD: 3263.00 ft Inc: 16.89 deg  
Az: 271.24 deg TVD: 3207.57 ft

S: 35 MD: 3358.00 ft Inc: 18.08 deg  
Az: 266.64 deg TVD: 3298.19 ft

S: 36 MD: 3452.00 ft Inc: 19.35 deg  
Az: 263.86 deg TVD: 3387.22 ft



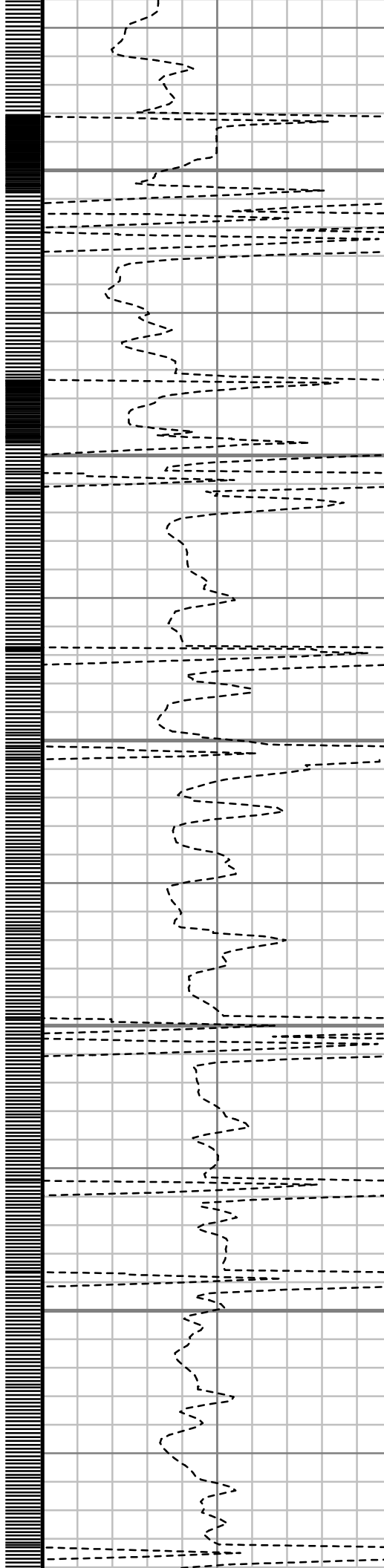
3600

3700

3800

3900

4000



S: 37 MD: 3547.00 ft Inc: 20.50 deg  
Az: 265.89 deg TVD: 3476.53 ft

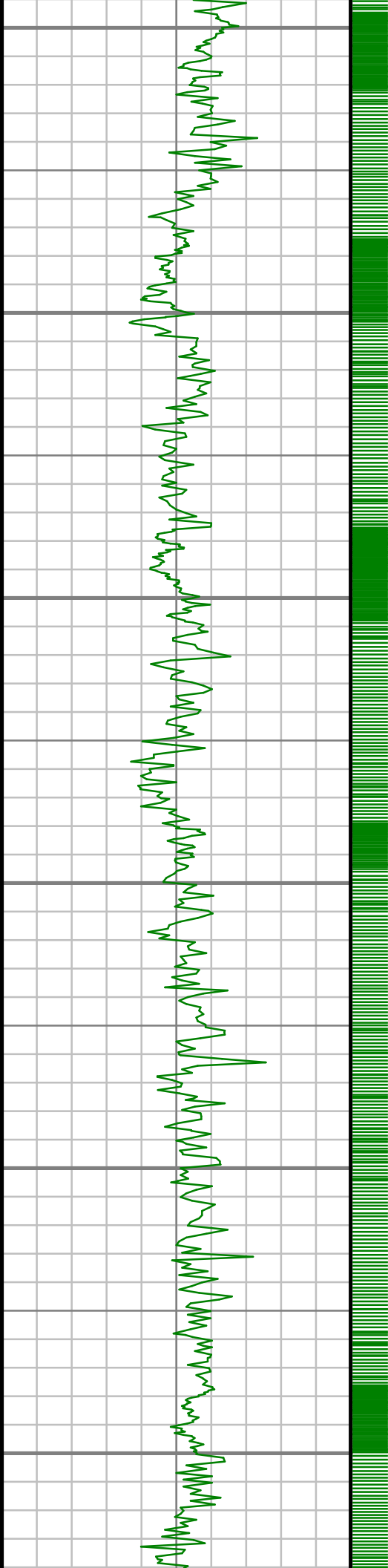
S: 38 MD: 3641.00 ft Inc: 22.44 deg  
Az: 275.20 deg TVD: 3564.02 ft

S: 39 MD: 3735.00 ft Inc: 25.89 deg  
Az: 274.48 deg TVD: 3649.77 ft

S: 40 MD: 3829.00 ft Inc: 25.79 deg  
Az: 273.44 deg TVD: 3734.37 ft

S: 41 MD: 3924.00 ft Inc: 25.41 deg  
Az: 272.73 deg TVD: 3820.05 ft

S: 42 MD: 4019.00 ft Inc: 22.41 deg  
Az: 271.38 deg TVD: 3906.88 ft



4100

S: 43 MD: 4113.00 ft Inc: 18.64 deg  
Az: 268.33 deg TVD: 3994.90 ft

4200

S: 44 MD: 4208.00 ft Inc: 19.43 deg  
Az: 267.02 deg TVD: 4084.71 ft

4300

S: 45 MD: 4302.00 ft Inc: 20.89 deg  
Az: 269.84 deg TVD: 4172.95 ft

4400

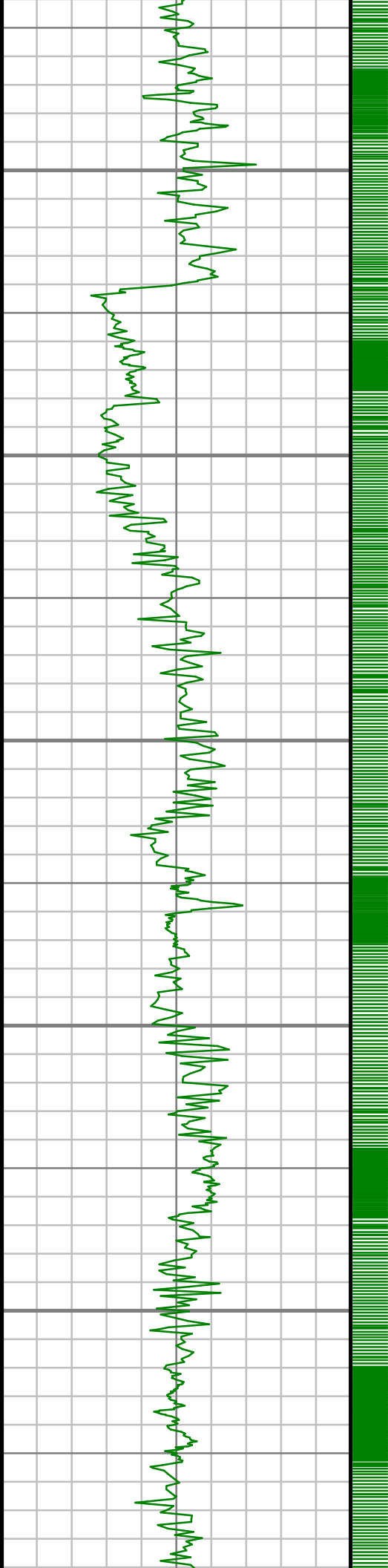
S: 46 MD: 4397.00 ft Inc: 21.68 deg  
Az: 269.88 deg TVD: 4261.47 ft

4500

S: 47 MD: 4492.00 ft Inc: 22.37 deg  
Az: 273.67 deg TVD: 4349.54 ft

4600

S: 48 MD: 4586.00 ft Inc: 18.48 deg  
Az: 273.47 deg TVD: 4437.61 ft



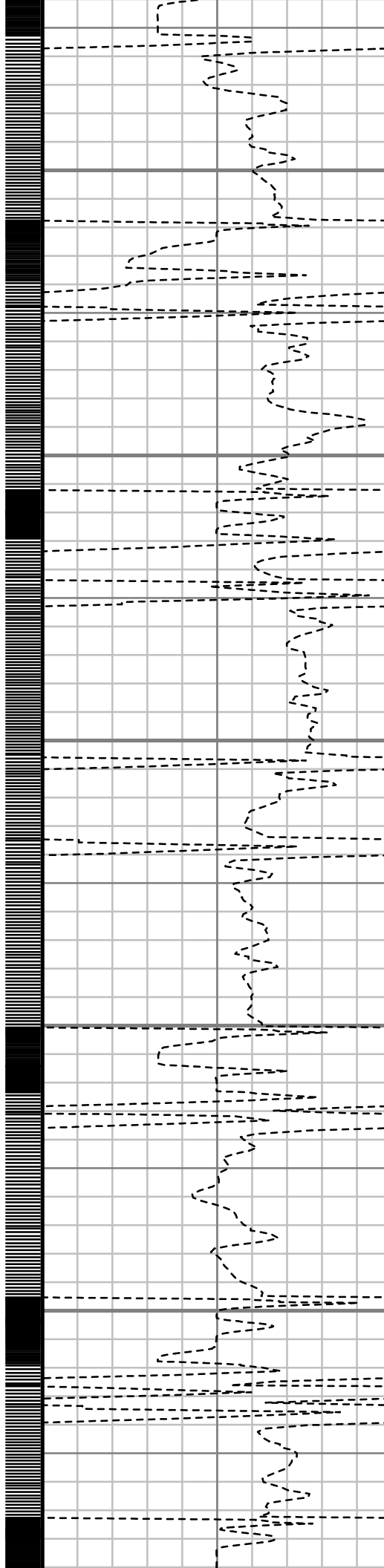
4700

4800

4900

5000

5100



S: 49 MD: 4681.00 ft Inc: 19.79 deg  
Az: 273.97 deg TVD: 4527.36 ft

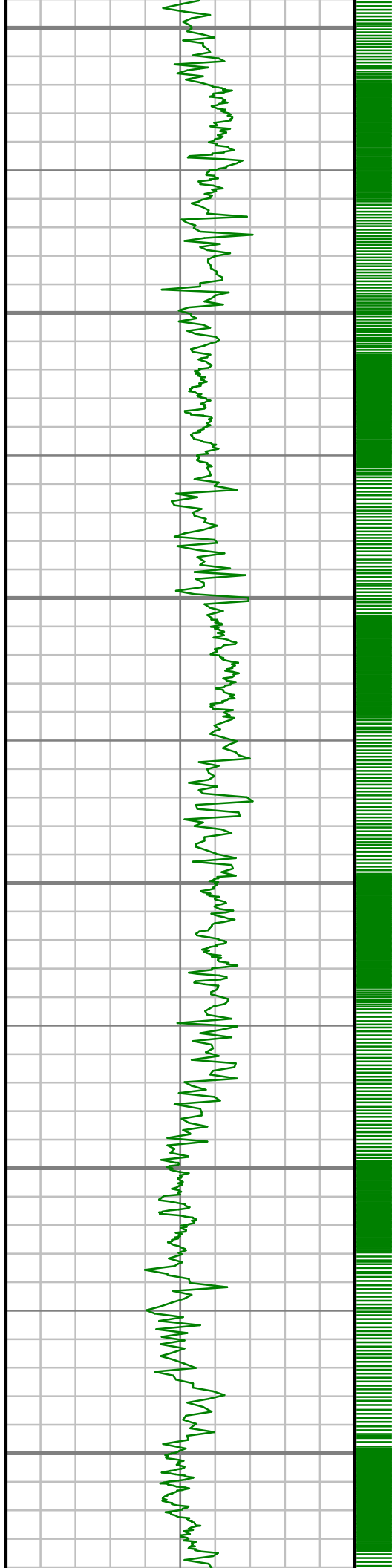
S: 50 MD: 4775.00 ft Inc: 21.12 deg  
Az: 271.47 deg TVD: 4615.44 ft

S: 51 MD: 4869.00 ft Inc: 21.18 deg  
Az: 272.06 deg TVD: 4703.11 ft

S: 52 MD: 4963.00 ft Inc: 18.45 deg  
Az: 271.29 deg TVD: 4791.53 ft

S: 53 MD: 5058.00 ft Inc: 17.85 deg  
Az: 269.42 deg TVD: 4881.81 ft

S: 54 MD: 5152.00 ft Inc: 16.61 deg  
Az: 268.49 deg TVD: 4971.59 ft



5200

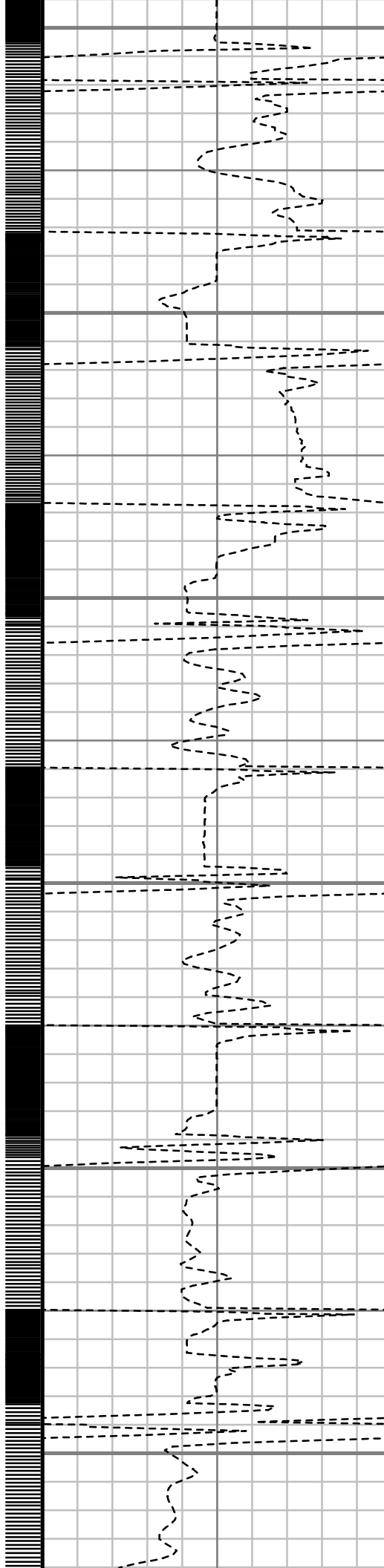
5300

5400

5500

5600

5700



S: 55 MD: 5247.00 ft Inc: 18.32 deg  
Az: 266.73 deg TVD: 5062.21 ft

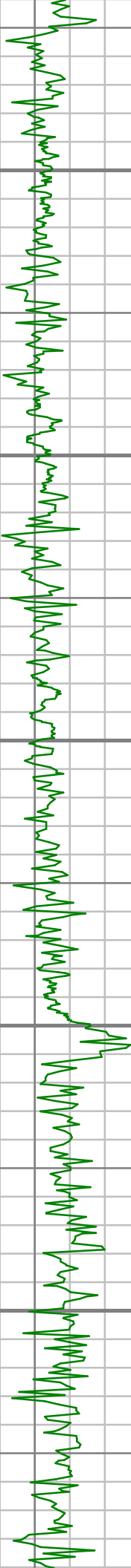
S: 56 MD: 5341.00 ft Inc: 19.13 deg  
Az: 265.30 deg TVD: 5151.23 ft

S: 57 MD: 5435.00 ft Inc: 19.52 deg  
Az: 268.81 deg TVD: 5239.94 ft

S: 58 MD: 5530.00 ft Inc: 20.40 deg  
Az: 266.20 deg TVD: 5329.23 ft

S: 59 MD: 5624.00 ft Inc: 21.63 deg  
Az: 266.74 deg TVD: 5416.98 ft

S: 60 MD: 5719.00 ft Inc: 18.15 deg  
Az: 271.29 deg TVD: 5506.31 ft



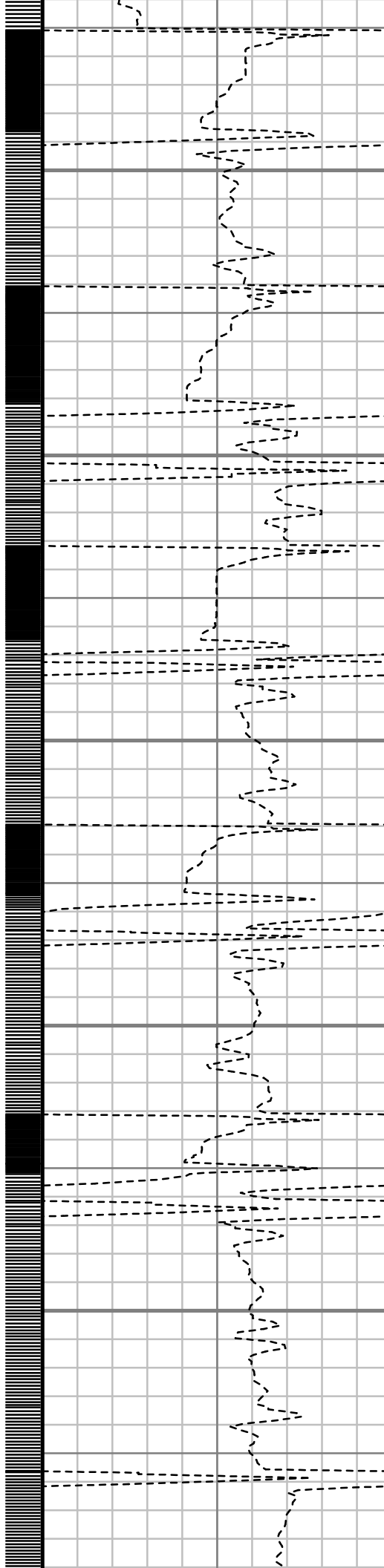
5800

5900

6000

6100

6200



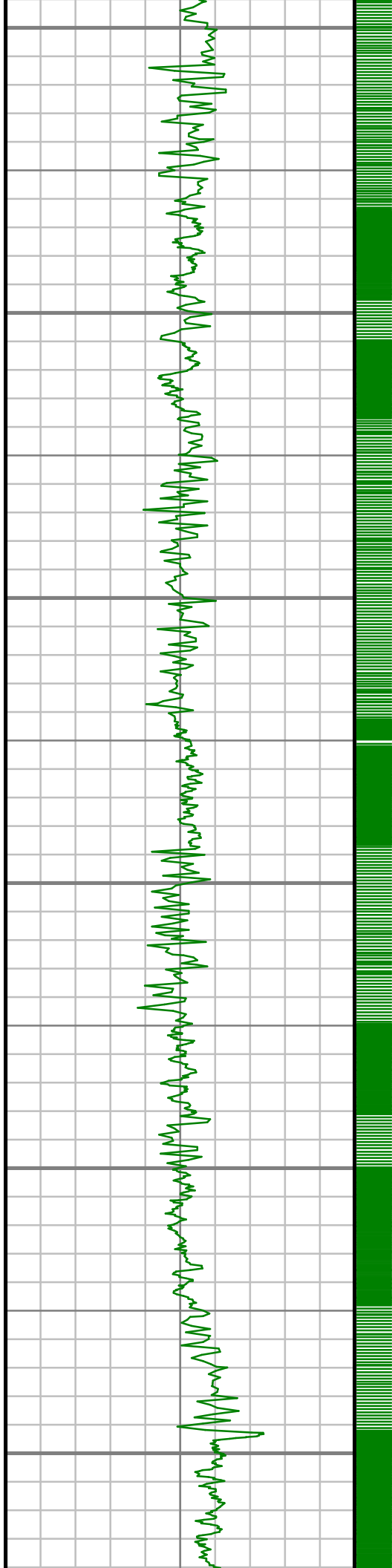
S: 61 MD: 5813.00 ft Inc: 19.40 deg  
Az: 276.38 deg TVD: 5595.31 ft

S: 62 MD: 5908.00 ft Inc: 21.87 deg  
Az: 276.66 deg TVD: 5684.21 ft

S: 63 MD: 6004.00 ft Inc: 23.41 deg  
Az: 271.45 deg TVD: 5772.82 ft

S: 64 MD: 6099.00 ft Inc: 23.92 deg  
Az: 270.37 deg TVD: 5859.83 ft

S: 65 MD: 6195.00 ft Inc: 23.20 deg  
Az: 266.61 deg TVD: 5947.83 ft



6300

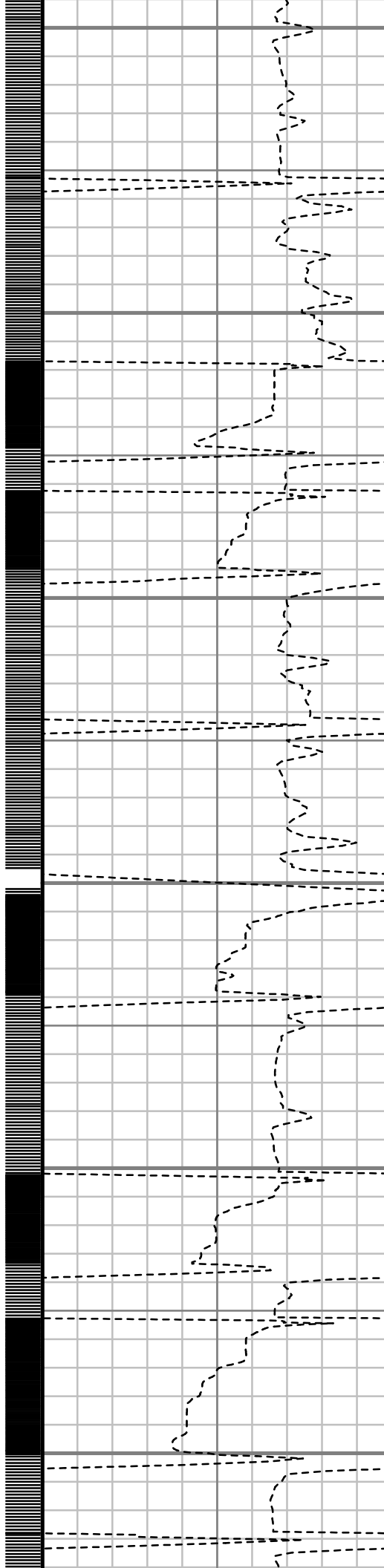
6400

6500

6600

6700

6800



S: 66 MD: 6290.00 ft Inc: 20.16 deg  
Az: 257.71 deg TVD: 6036.13 ft

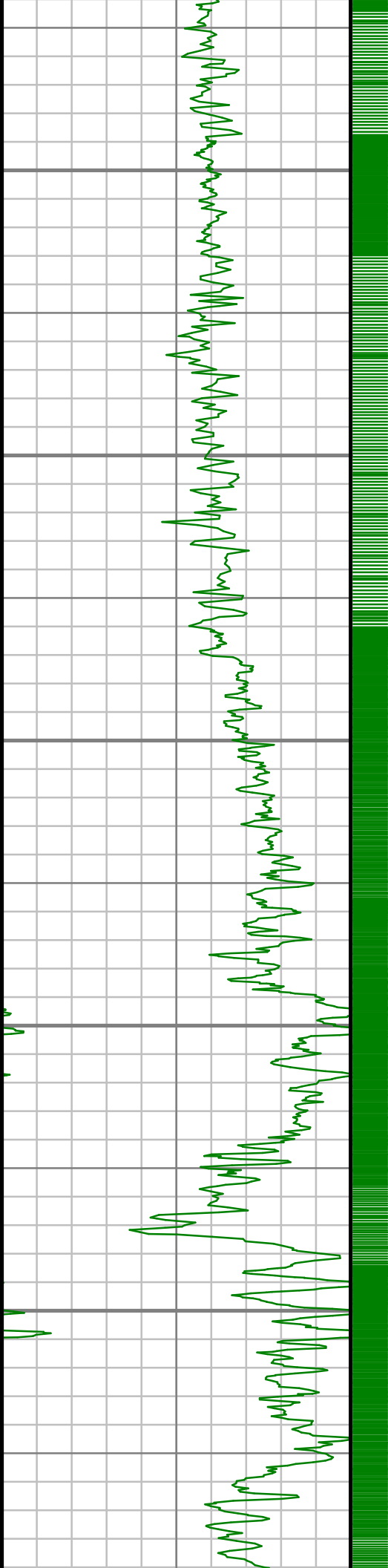
S: 67 MD: 6386.00 ft Inc: 17.47 deg  
Az: 248.55 deg TVD: 6127.01 ft

S: 68 MD: 6481.00 ft Inc: 19.41 deg  
Az: 253.28 deg TVD: 6217.13 ft

S: 69 MD: 6575.00 ft Inc: 17.36 deg  
Az: 248.42 deg TVD: 6306.33 ft

S: 70 MD: 6670.00 ft Inc: 17.48 deg  
Az: 253.52 deg TVD: 6396.98 ft

S: 71 MD: 6765.00 ft Inc: 18.08 deg  
Az: 265.13 deg TVD: 6487.47 ft



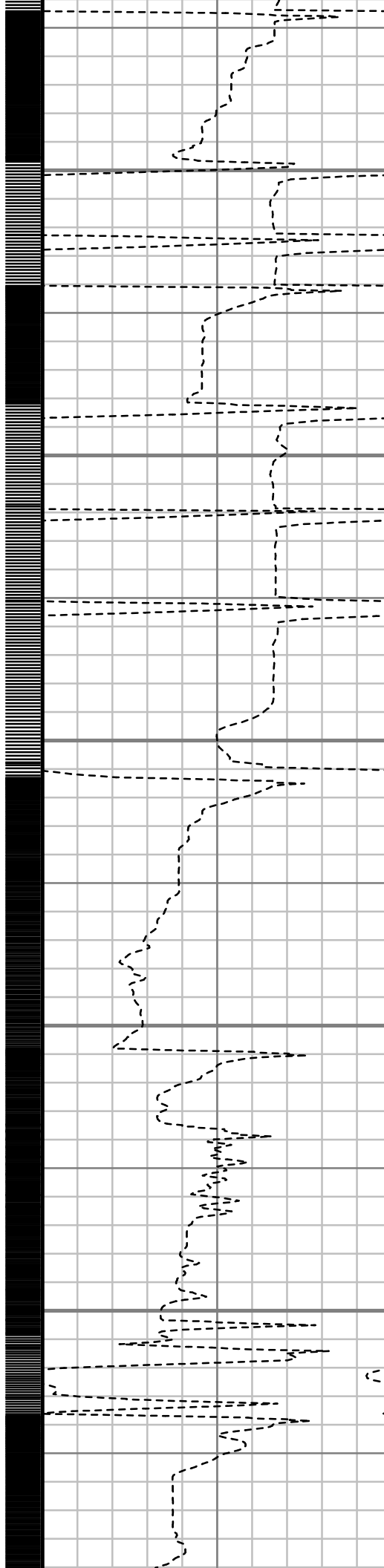
6900

7000

7100

7200

7300



S: 72 MD: 6860.00 ft Inc: 22.16 deg  
Az: 274.22 deg TVD: 6576.67 ft

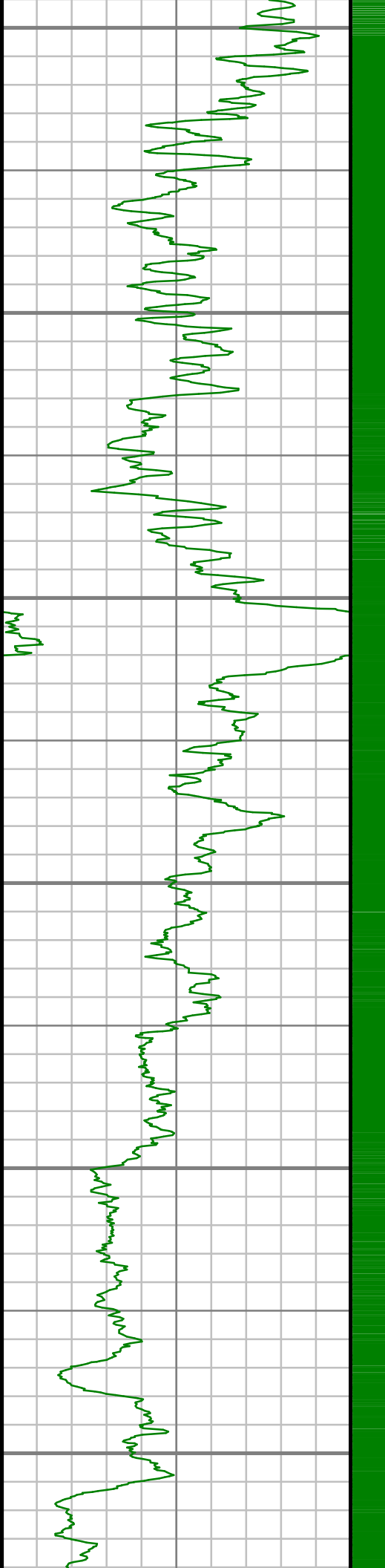
S: 73 MD: 6955.00 ft Inc: 23.91 deg  
Az: 284.37 deg TVD: 6664.13 ft

S: 74 MD: 7050.00 ft Inc: 23.07 deg  
Az: 281.22 deg TVD: 6751.26 ft

S: 75 MD: 7144.00 ft Inc: 24.73 deg  
Az: 282.85 deg TVD: 6837.20 ft

S: 76 MD: 7268.00 ft Inc: 39.74 deg  
Az: 274.17 deg TVD: 6941.84 ft

S: 77 MD: 7363.00 ft Inc: 45.10 deg  
Az: 275.14 deg TVD: 7011.94 ft



7400

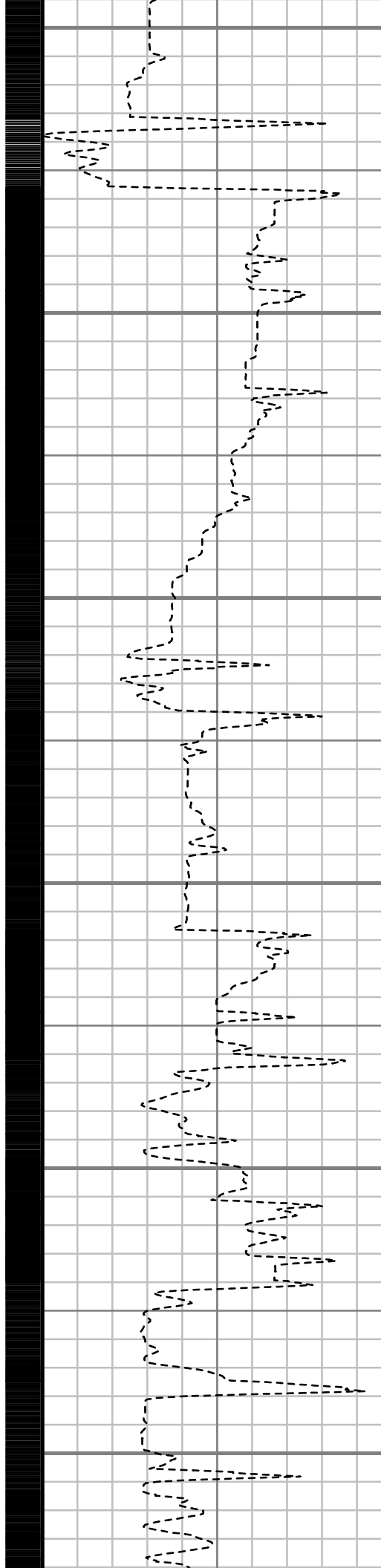
7500

7600

7700

7800

7900



S: 78 MD: 7458.00 ft Inc: 52.33 deg  
Az: 278.37 deg TVD: 7074.59 ft

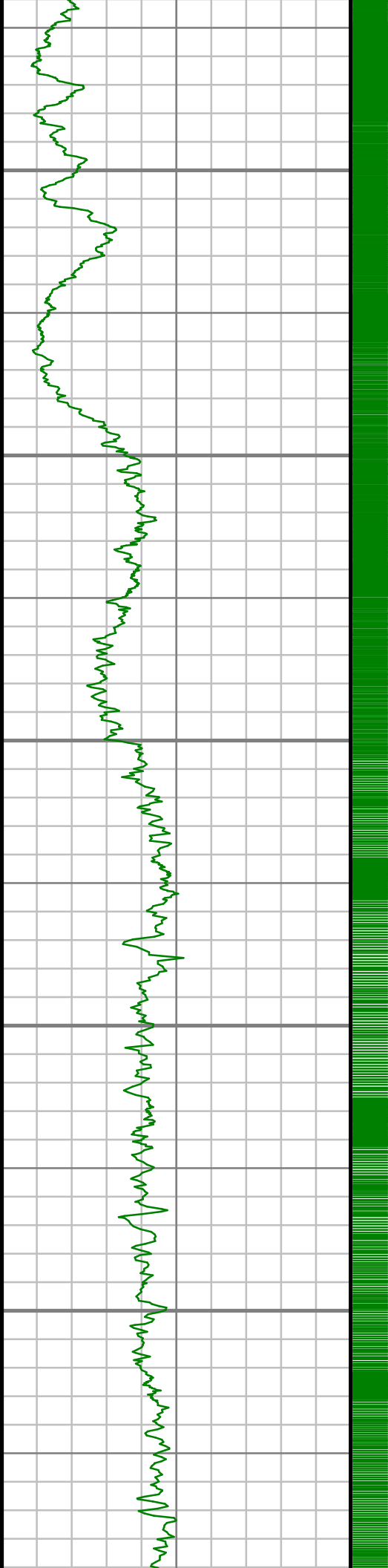
S: 79 MD: 7553.00 ft Inc: 63.04 deg  
Az: 272.00 deg TVD: 7125.33 ft

S: 80 MD: 7648.00 ft Inc: 74.42 deg  
Az: 278.51 deg TVD: 7159.77 ft

S: 81 MD: 7743.00 ft Inc: 86.27 deg  
Az: 273.42 deg TVD: 7175.69 ft

S: 82 MD: 7838.00 ft Inc: 82.67 deg  
Az: 270.44 deg TVD: 7184.84 ft

S: 83 MD: 7932.00 ft Inc: 81.20 deg  
Az: 269.39 deg TVD: 7199.99 ft



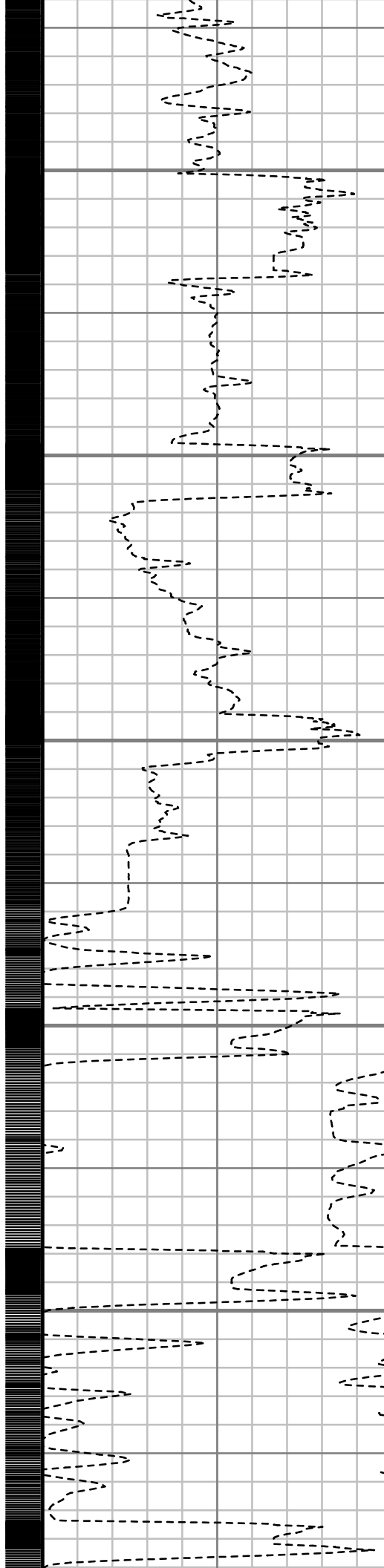
8000

8100

8200

8300

8400



Az: 269.73 deg TVD: 7198.03 ft

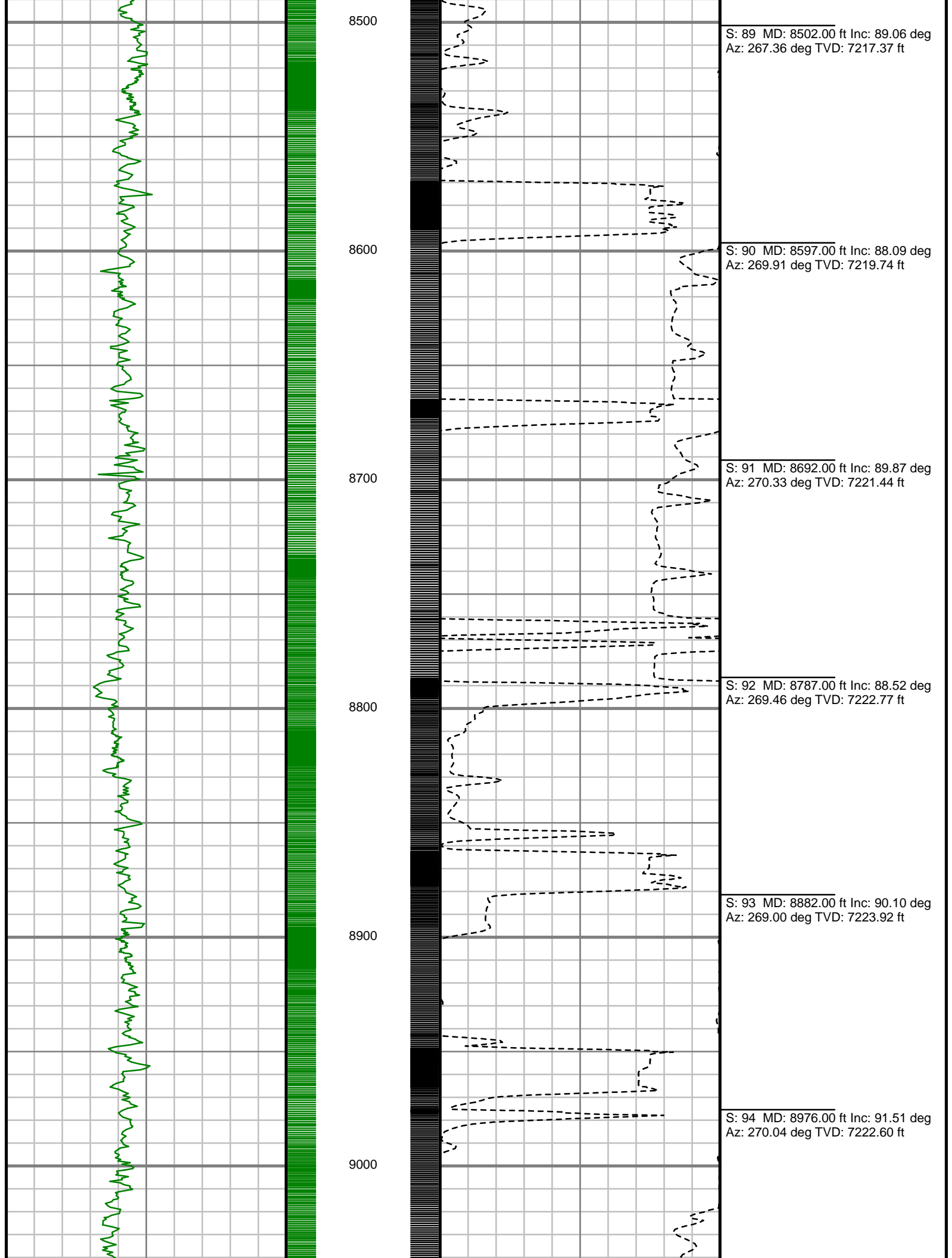
S: 84 MD: 8027.00 ft Inc: 85.06 deg  
Az: 268.12 deg TVD: 7209.38 ft

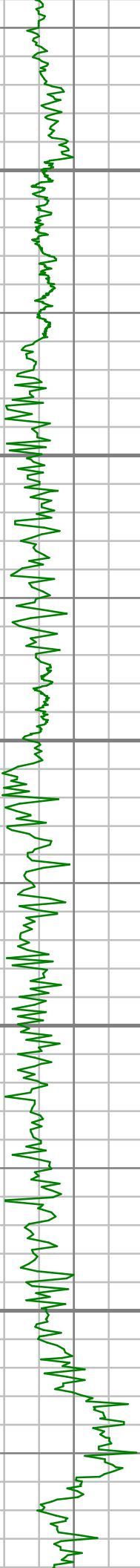
S: 85 MD: 8122.00 ft Inc: 90.27 deg  
Az: 267.79 deg TVD: 7213.25 ft

S: 86 MD: 8217.00 ft Inc: 87.79 deg  
Az: 266.87 deg TVD: 7214.86 ft

S: 87 MD: 8312.00 ft Inc: 88.66 deg  
Az: 267.44 deg TVD: 7217.81 ft

S: 88 MD: 8408.00 ft Inc: 91.41 deg  
Az: 268.73 deg TVD: 7217.76 ft





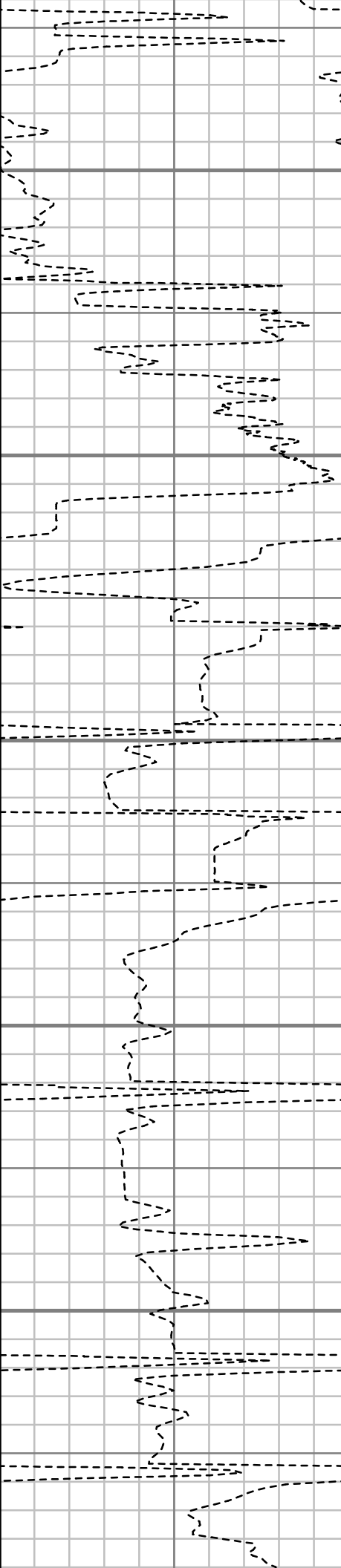
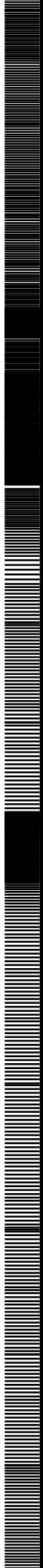
9100

9200

9300

9400

9500



S: 95 MD: 9071.00 ft Inc: 92.55 deg  
Az: 270.15 deg TVD: 7219.23 ft

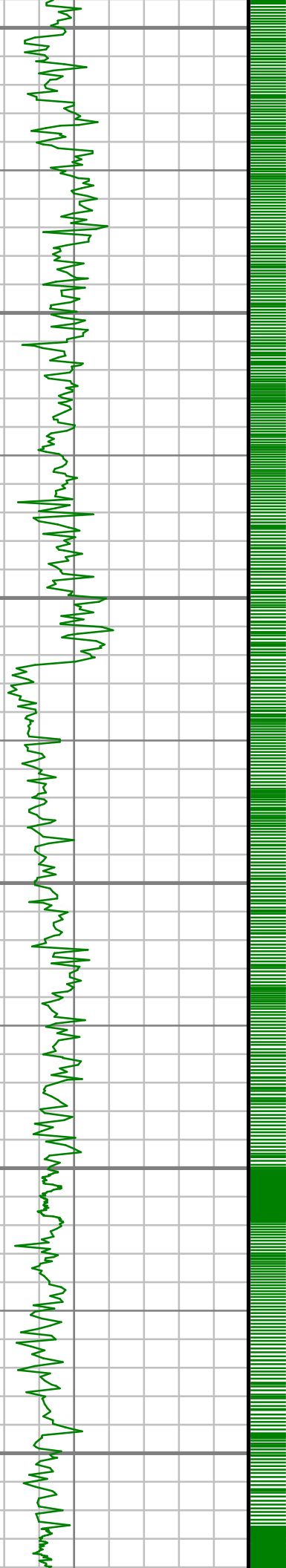
S: 96 MD: 9166.00 ft Inc: 91.01 deg  
Az: 269.91 deg TVD: 7216.29 ft

S: 97 MD: 9261.00 ft Inc: 87.08 deg  
Az: 267.63 deg TVD: 7217.87 ft

S: 98 MD: 9356.00 ft Inc: 88.66 deg  
Az: 270.00 deg TVD: 7221.40 ft

S: 99 MD: 9451.00 ft Inc: 88.79 deg  
Az: 269.70 deg TVD: 7223.52 ft

S: 100 MD: 9546.00 ft Inc: 90.17 deg  
Az: 270.78 deg TVD: 7224.38 ft



9600

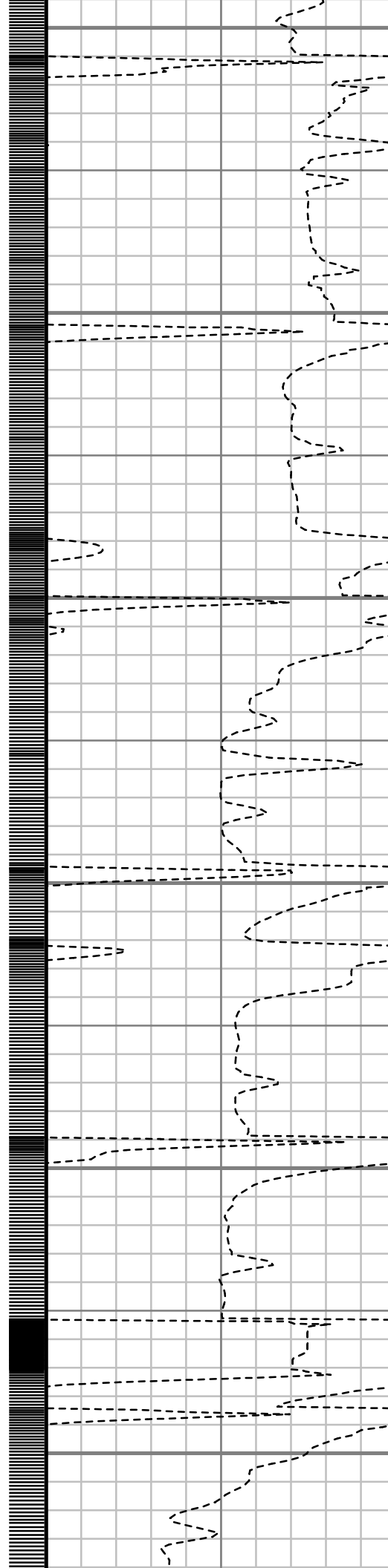
9700

9800

9900

10000

10100



S: 101 MD: 9641.00 ft Inc: 90.74 deg  
Az: 271.49 deg TVD: 7223.63 ft

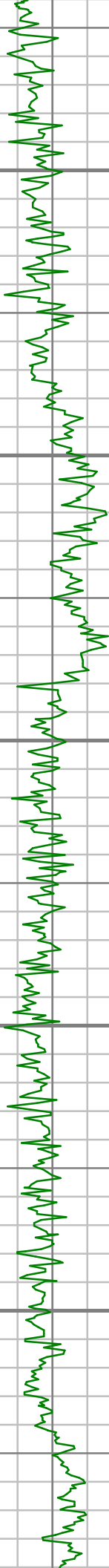
S: 102 MD: 9736.00 ft Inc: 91.21 deg  
Az: 271.78 deg TVD: 7222.01 ft

S: 103 MD: 9831.00 ft Inc: 91.31 deg  
Az: 272.02 deg TVD: 7219.93 ft

S: 104 MD: 9926.00 ft Inc: 91.95 deg  
Az: 271.81 deg TVD: 7217.23 ft

S: 105 MD: 10021.00 ft Inc: 92.65 deg  
deg Az: 272.17 deg TVD: 7213.42 ft

S: 106 MD: 10116.00 ft Inc: 91.28 deg  
deg Az: 271.12 deg TVD: 7210.16 ft



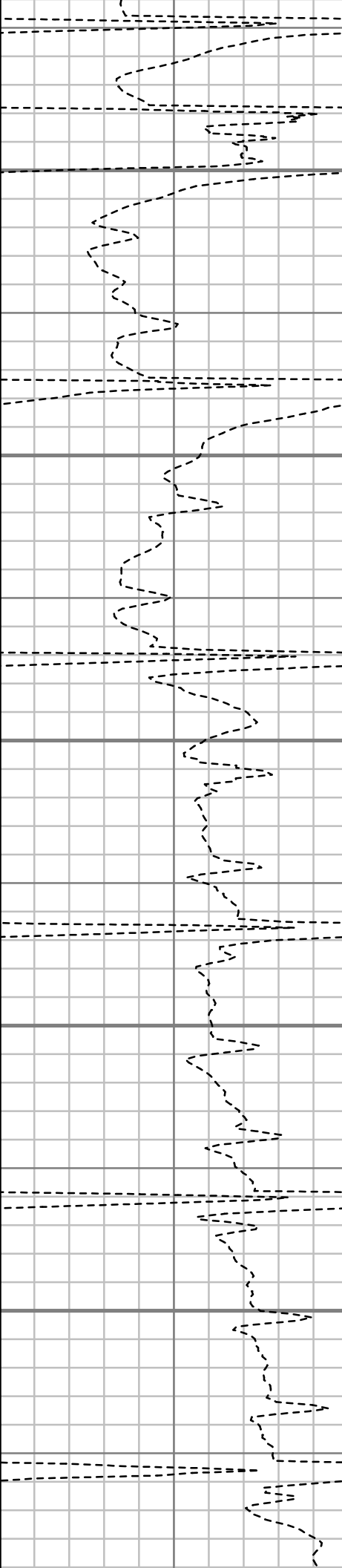
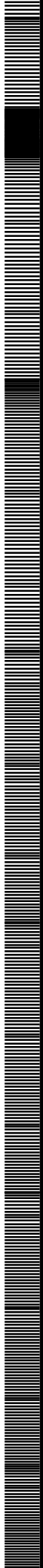
10200

10300

10400

10500

10600



S: 107 MD: 10212.00 ft Inc: 91.14  
deg Az: 270.46 deg TVD: 7208.14 ft

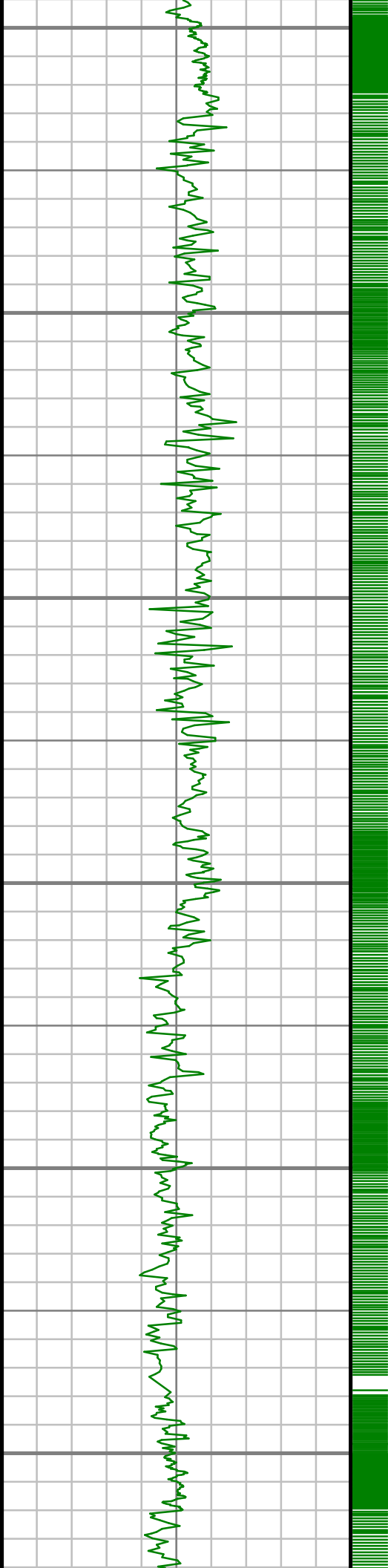
S: 108 MD: 10308.00 ft Inc: 91.28  
deg Az: 270.06 deg TVD: 7206.11 ft

S: 109 MD: 10403.00 ft Inc: 91.58  
deg Az: 270.37 deg TVD: 7203.75 ft

S: 110 MD: 10497.00 ft Inc: 91.54  
deg Az: 270.06 deg TVD: 7201.19 ft

S: 111 MD: 10591.00 ft Inc: 91.64 deg  
Az: 269.94 deg TVD: 7198.57 ft

S: 112 MD: 10687.00 ft Inc: 91.24



10700

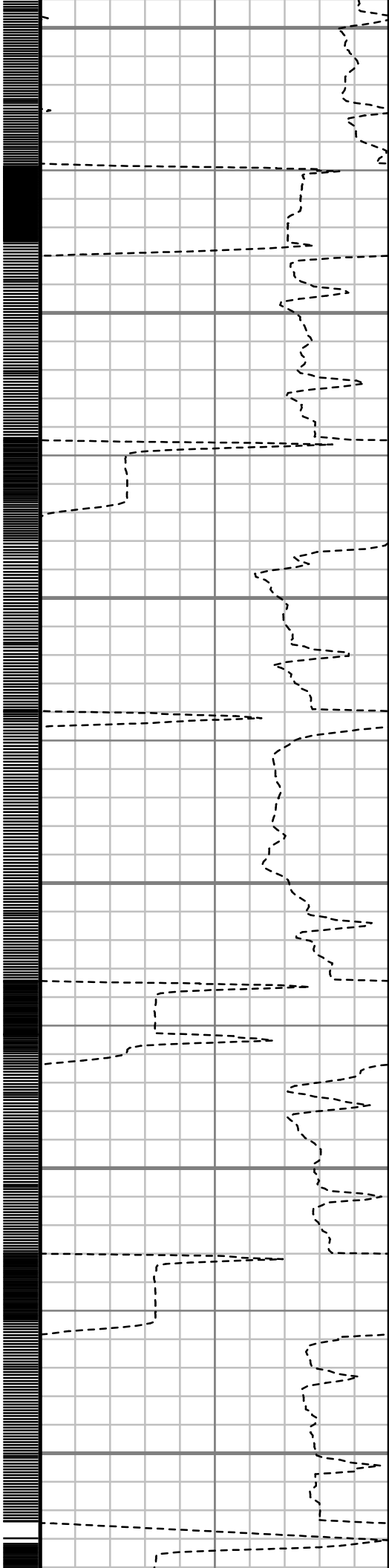
10800

10900

11000

11100

11200



S: 112 MD: 10687.00 ft Inc: 91.24  
deg Az: 269.47 deg TVD: 7196.16 ft

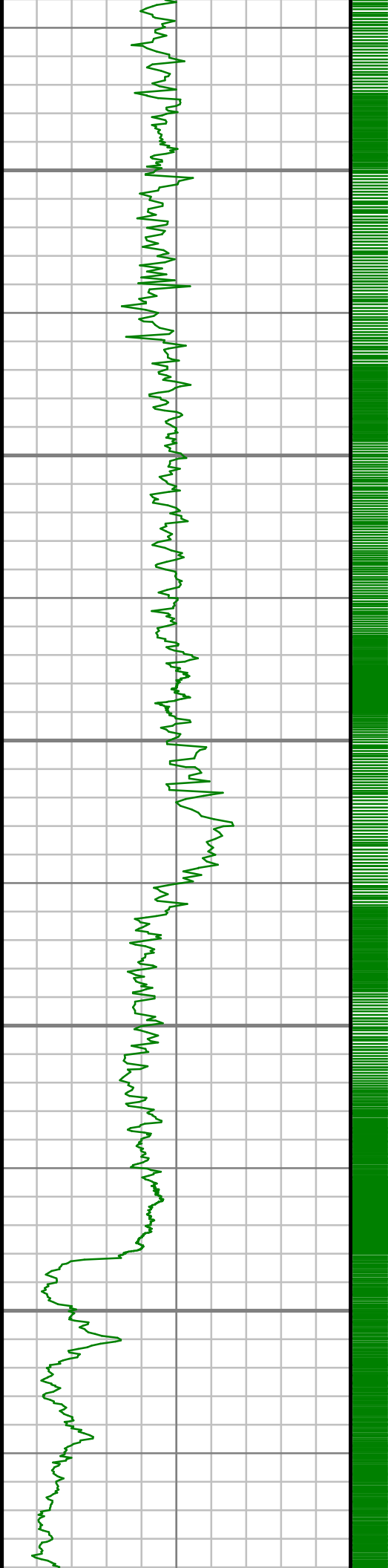
S: 113 MD: 10781.00 ft Inc: 94.06  
deg Az: 270.88 deg TVD: 7191.81 ft

S: 114 MD: 10876.00 ft Inc: 94.91  
deg Az: 270.85 deg TVD: 7184.38 ft

S: 115 MD: 10970.00 ft Inc: 95.21  
deg Az: 270.77 deg TVD: 7176.09 ft

S: 116 MD: 11065.00 ft Inc: 95.07 deg  
Az: 270.32 deg TVD: 7167.59 ft

S: 117 MD: 11159.00 ft Inc: 95.54 deg  
Az: 270.86 deg TVD: 7158.89 ft



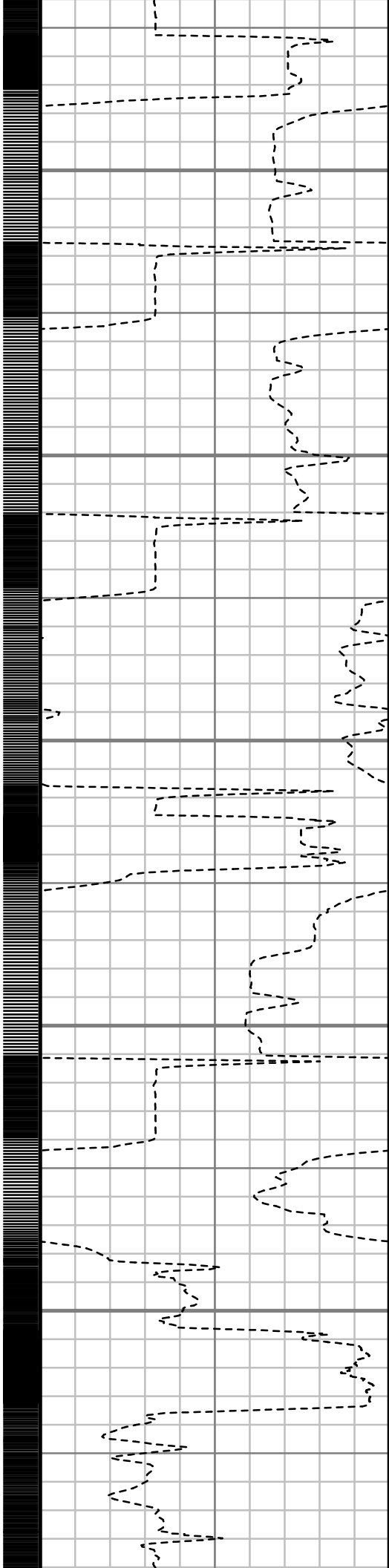
11300

11400

11500

11600

11700



S: 118 MD: 11254.00 ft Inc: 94.40 deg  
Az: 270.66 deg TVD: 7150.66 ft

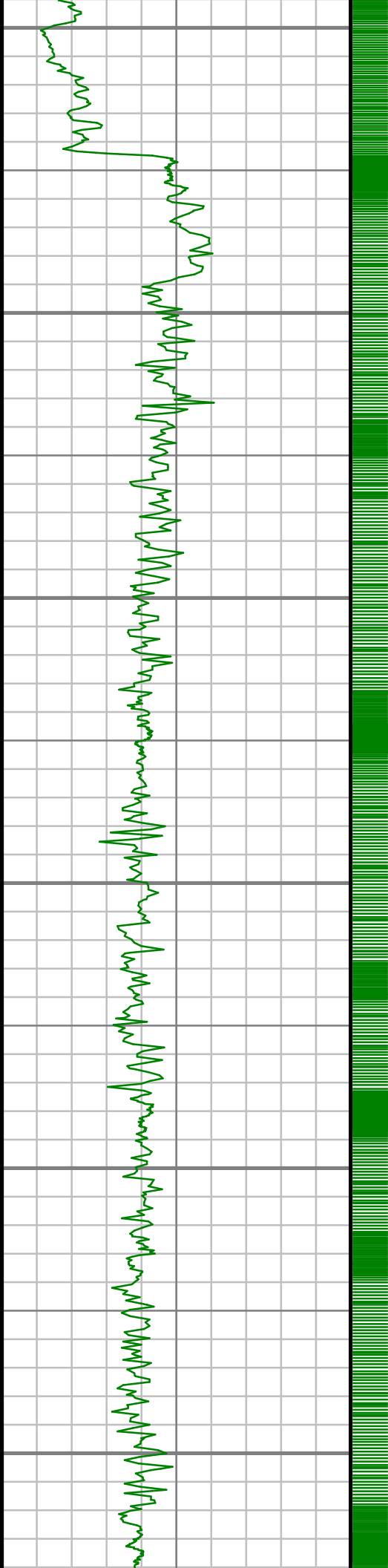
S: 119 MD: 11350.00 ft Inc: 93.59 deg  
Az: 270.04 deg TVD: 7143.97 ft

S: 120 MD: 11445.00 ft Inc: 93.19  
deg Az: 269.42 deg TVD: 7138.36 ft

S: 121 MD: 11540.00 ft Inc: 95.41  
deg Az: 269.52 deg TVD: 7131.24 ft

S: 122 MD: 11635.00 ft Inc: 96.79  
deg Az: 269.65 deg TVD: 7121.14 ft

S: 123 MD: 11730.00 ft Inc: 94.36  
deg Az: 269.28 deg TVD: 7111.91 ft



11800

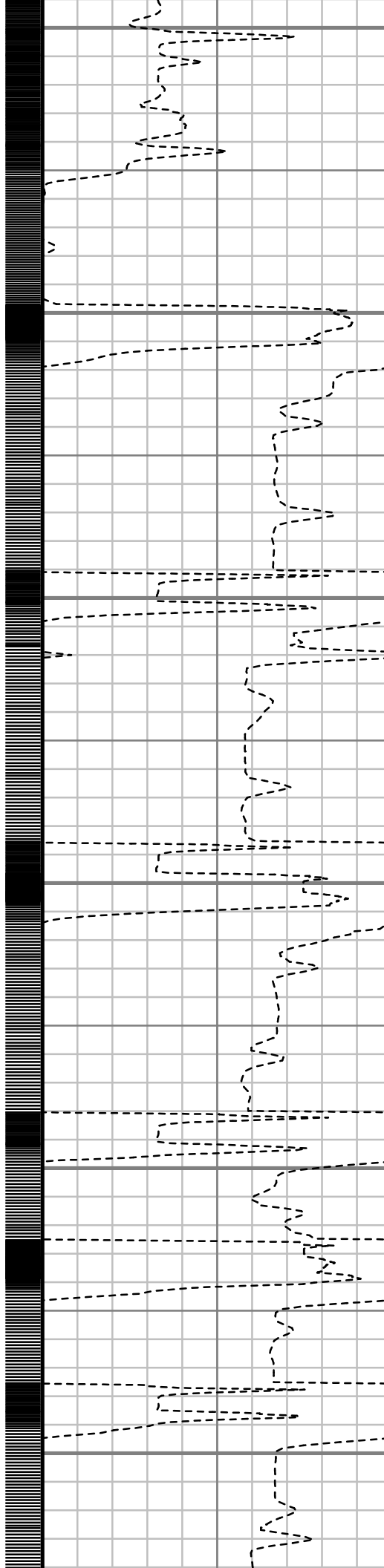
11900

12000

12100

12200

12300



S: 124 MD: 11826.00 ft Inc: 95.07  
deg Az: 269.28 deg TVD: 7104.01 ft

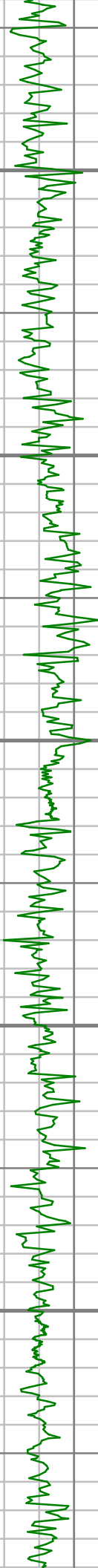
S: 125 MD: 11921.00 ft Inc: 92.85  
deg Az: 270.09 deg TVD: 7097.45 ft

S: 126 MD: 12015.00 ft Inc: 93.29  
deg Az: 269.56 deg TVD: 7092.42 ft

S: 127 MD: 12115.00 ft Inc: 92.42  
deg Az: 269.92 deg TVD: 7087.44 ft

S: 128 MD: 12210.00 ft Inc: 92.55  
deg Az: 269.31 deg TVD: 7083.33 ft

S: 129 MD: 12305.00 ft Inc: 92.08  
deg Az: 270.89 deg TVD: 7079.49 ft



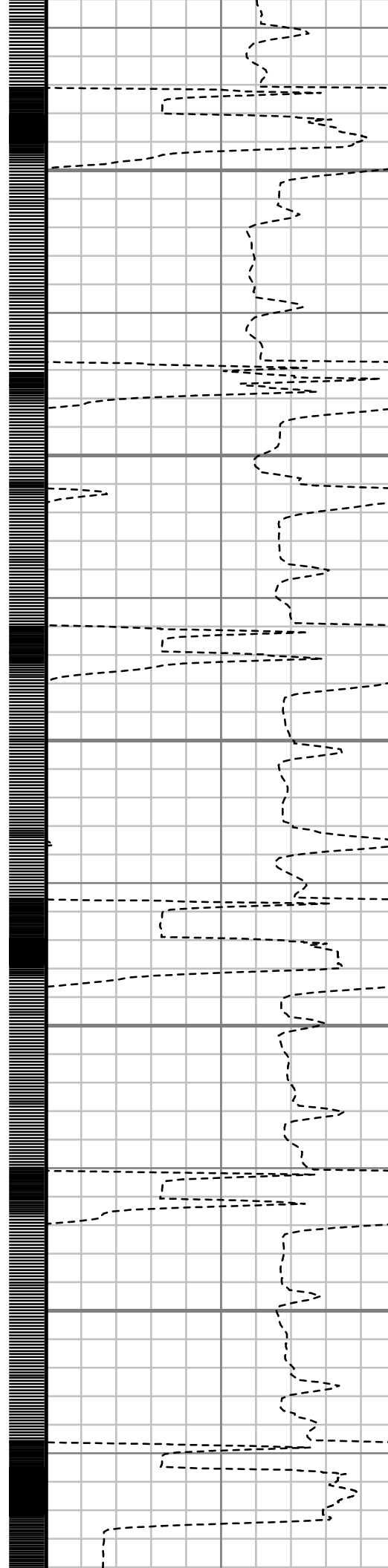
12400

12500

12600

12700

12800



S: 130 MD: 12400.00 ft Inc: 90.80  
deg Az: 270.13 deg TVD: 7077.10 ft

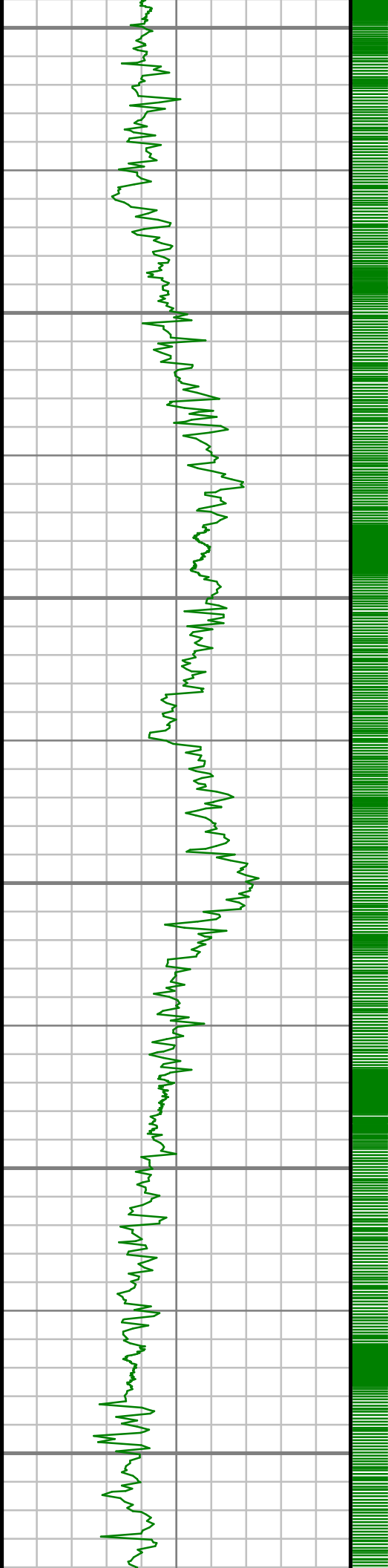
S: 131 MD: 12494.00 ft Inc: 91.11  
deg Az: 270.15 deg TVD: 7075.53 ft

S: 132 MD: 12589.00 ft Inc: 92.15  
deg Az: 270.43 deg TVD: 7072.84 ft

S: 133 MD: 12685.00 ft Inc: 91.54  
deg Az: 270.51 deg TVD: 7069.75 ft

S: 134 MD: 12780.00 ft Inc: 92.55  
deg Az: 270.83 deg TVD: 7066.36 ft

S: 135 MD: 12875.00 ft Inc: 91.11  
deg Az: 271.32 deg TVD: 7063.33 ft



12900

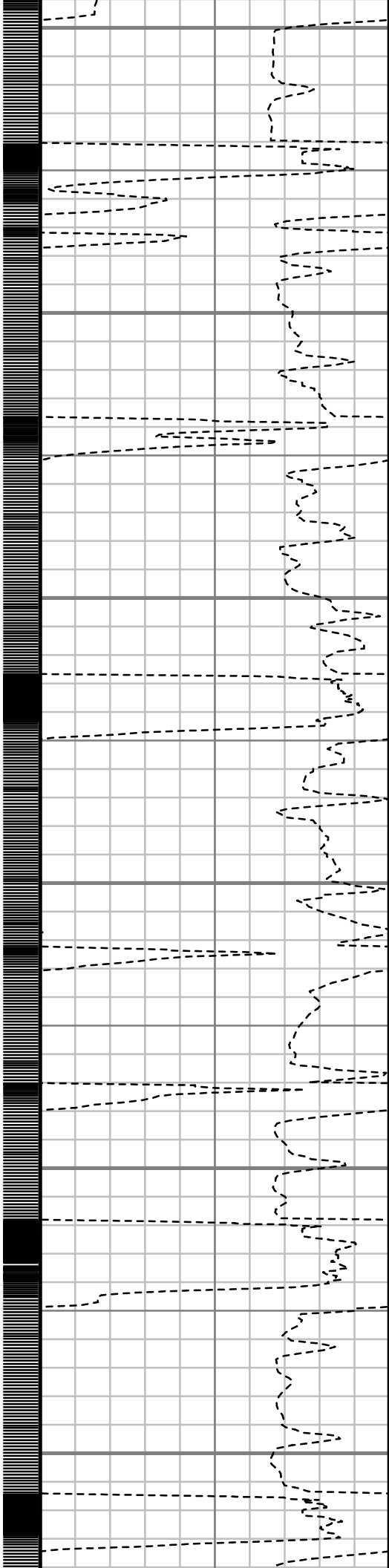
13000

13100

13200

13300

13400



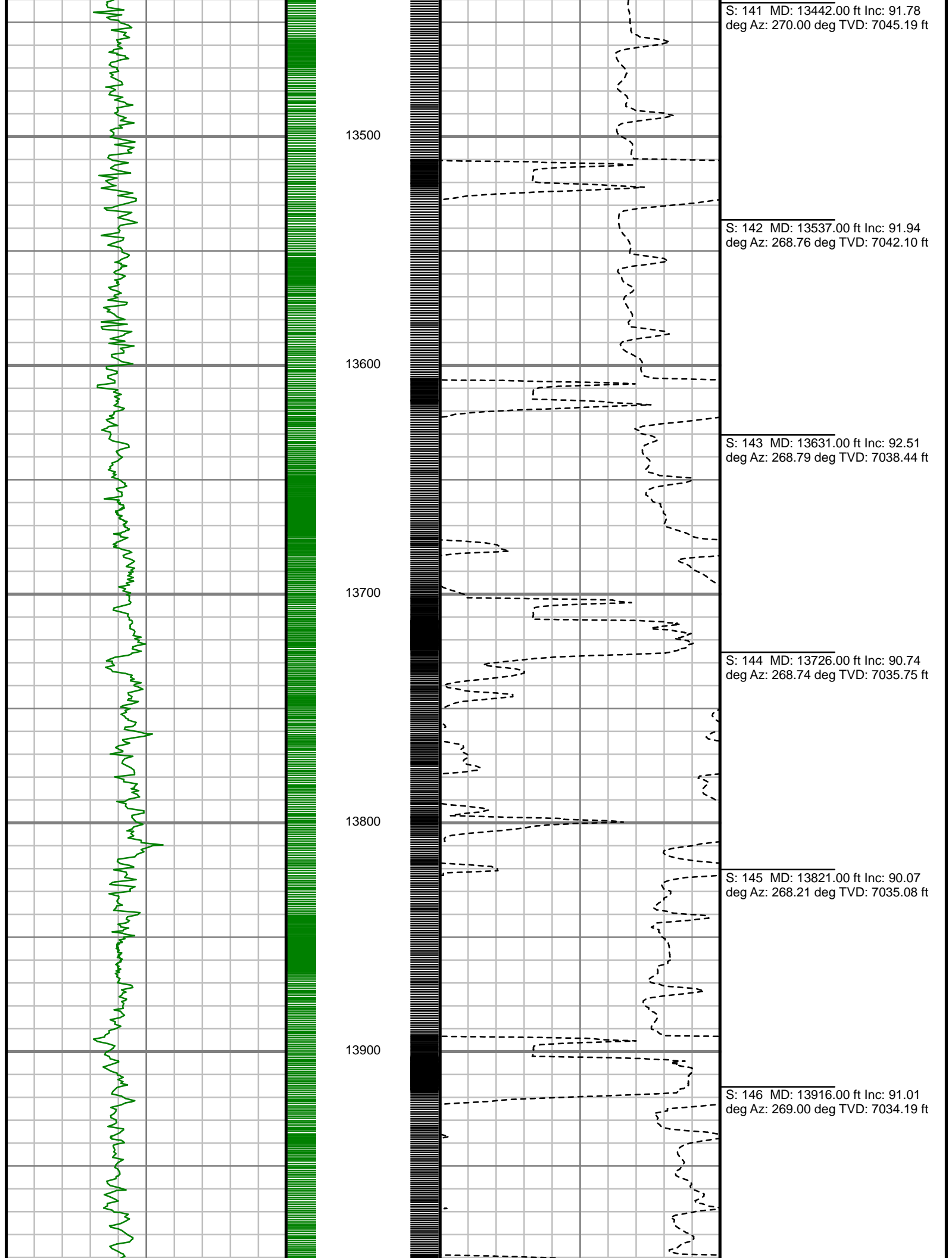
S: 136 MD: 12970.00 ft Inc: 89.80  
deg Az: 272.77 deg TVD: 7062.58 ft

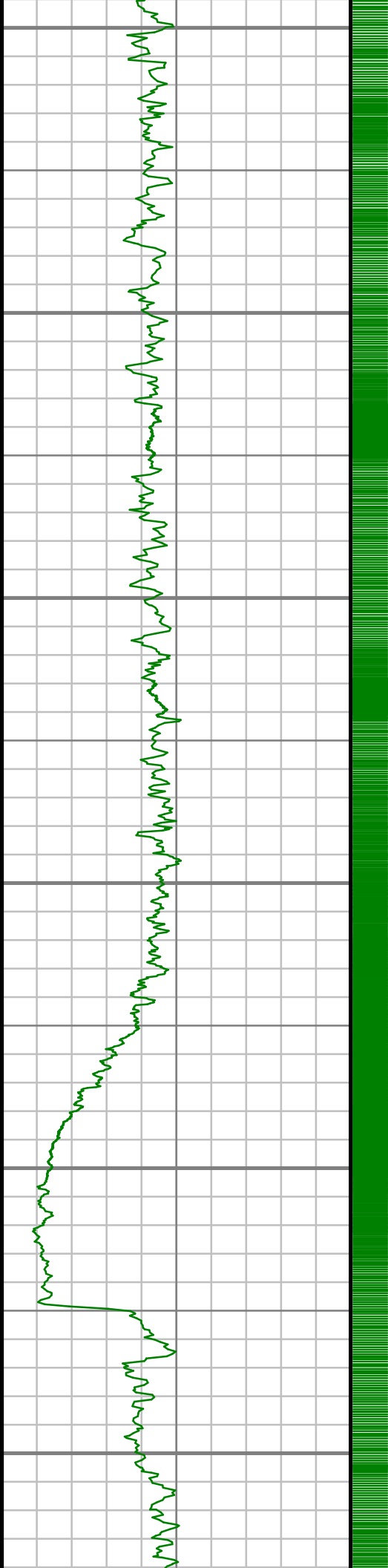
S: 137 MD: 13064.00 ft Inc: 90.40  
deg Az: 273.05 deg TVD: 7062.41 ft

S: 138 MD: 13158.00 ft Inc: 92.58  
deg Az: 271.27 deg TVD: 7059.97 ft

S: 139 MD: 13253.00 ft Inc: 93.46  
deg Az: 272.29 deg TVD: 7054.96 ft

S: 140 MD: 13347.00 ft Inc: 93.32  
deg Az: 270.65 deg TVD: 7049.41 ft





14000

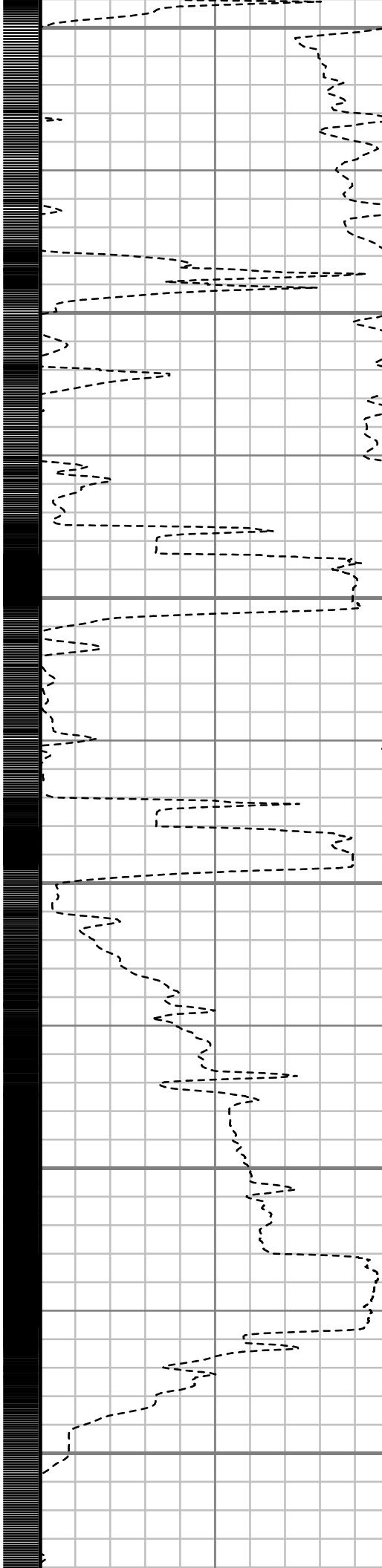
14100

14200

14300

14400

14500



S: 147 MD: 14011.00 ft Inc: 91.01  
deg Az: 267.99 deg TVD: 7032.53 ft

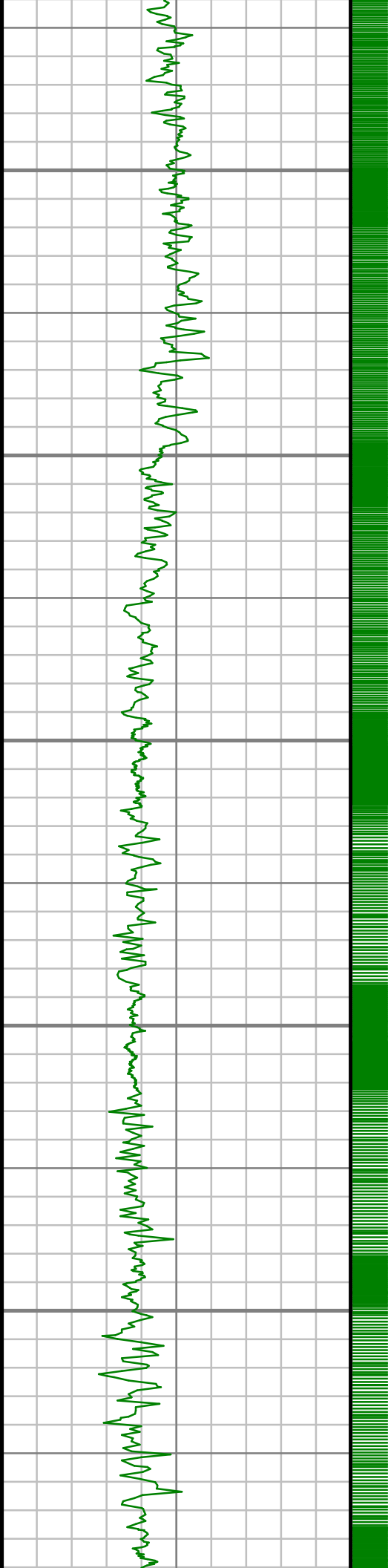
S: 148 MD: 14107.00 ft Inc: 90.47  
deg Az: 266.57 deg TVD: 7031.29 ft

S: 149 MD: 14202.00 ft Inc: 90.47  
deg Az: 268.73 deg TVD: 7030.51 ft

S: 150 MD: 14297.00 ft Inc: 91.54  
deg Az: 269.34 deg TVD: 7028.84 ft

S: 151 MD: 14392.00 ft Inc: 91.61  
deg Az: 268.87 deg TVD: 7026.23 ft

S: 152 MD: 14487.00 ft Inc: 88.99  
deg Az: 270.70 deg TVD: 7025.73 ft



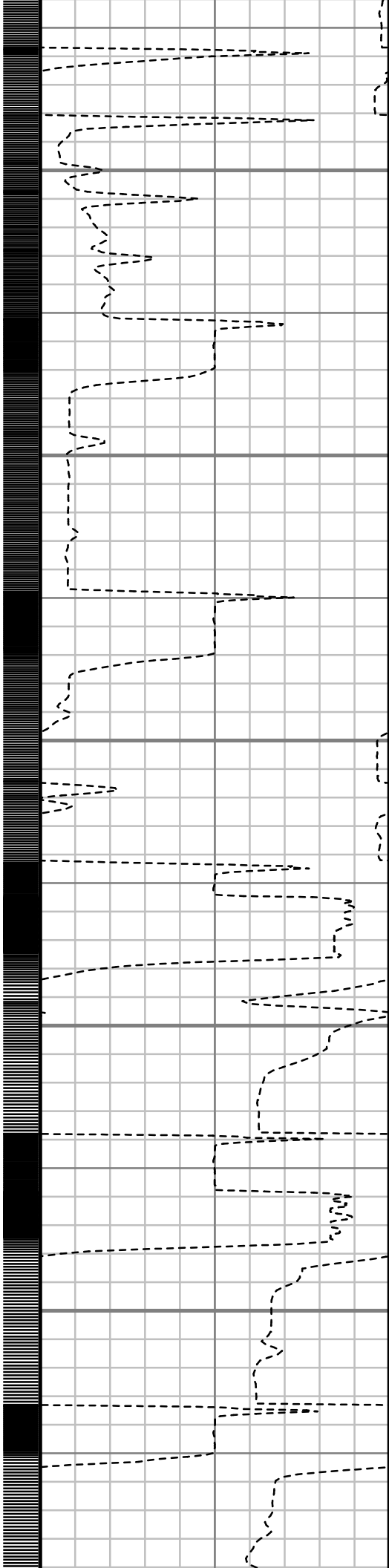
14600

14700

14800

14900

15000



S: 153 MD: 14582.00 ft Inc: 90.00  
deg Az: 270.35 deg TVD: 7026.56 ft

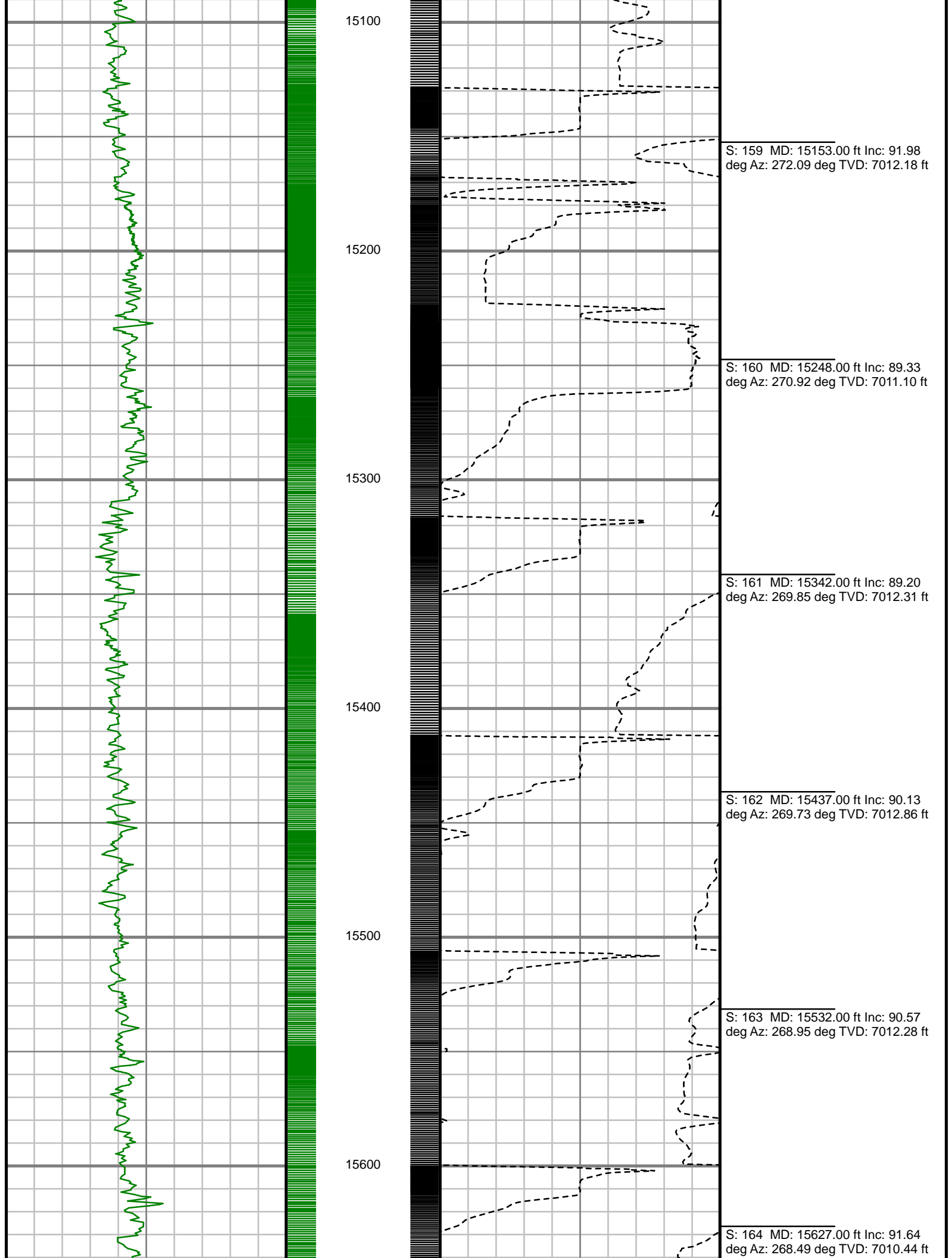
S: 154 MD: 14678.00 ft Inc: 91.58  
deg Az: 270.49 deg TVD: 7025.24 ft

S: 155 MD: 14773.00 ft Inc: 92.68  
deg Az: 270.33 deg TVD: 7021.72 ft

S: 156 MD: 14868.00 ft Inc: 91.68  
deg Az: 271.25 deg TVD: 7018.10 ft

S: 157 MD: 14963.00 ft Inc: 90.67  
deg Az: 271.09 deg TVD: 7016.16 ft

S: 158 MD: 15058.00 ft Inc: 91.07  
deg Az: 271.29 deg TVD: 7014.71 ft





15700

15800

15900

16000

16100

S: 165 MD: 15722.00 ft Inc: 90.44  
deg Az: 268.45 deg TVD: 7008.72 ft

S: 166 MD: 15816.00 ft Inc: 91.64  
deg Az: 269.89 deg TVD: 7007.02 ft

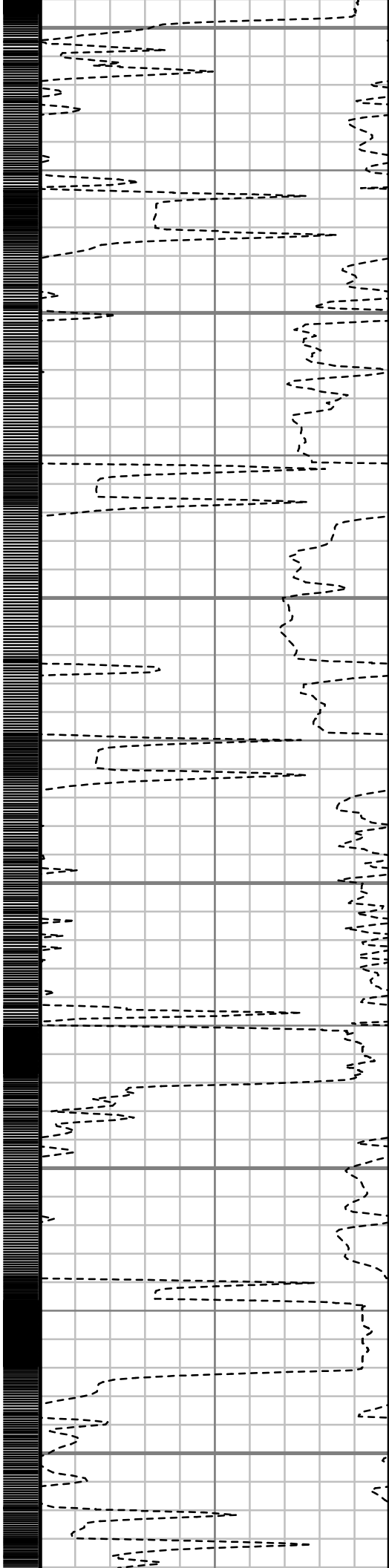
S: 167 MD: 15911.00 ft Inc: 89.77  
deg Az: 269.62 deg TVD: 7005.85 ft

S: 168 MD: 16006.00 ft Inc: 90.17  
deg Az: 270.21 deg TVD: 7005.90 ft

S: 169 MD: 16100.00 ft Inc: 90.77  
deg Az: 269.14 deg TVD: 7005.13 ft



16200



S: 170 MD: 16196.00 ft Inc: 89.20  
deg Az: 269.03 deg TVD: 7005.16 ft

16300

S: 171 MD: 16291.00 ft Inc: 89.87  
deg Az: 269.79 deg TVD: 7005.94 ft

16400

S: 172 MD: 16382.00 ft Inc: 90.47  
deg Az: 269.39 deg TVD: 7005.67 ft

16500

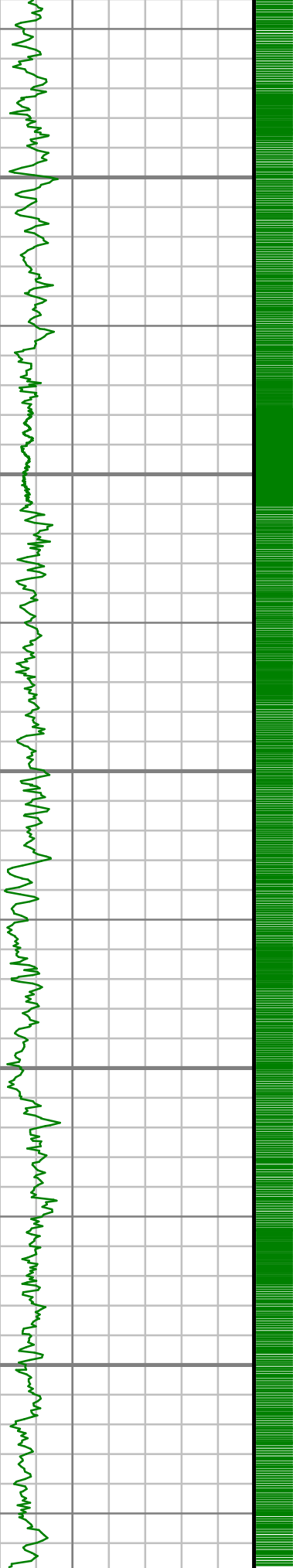
S: 173 MD: 16476.00 ft Inc: 91.48  
deg Az: 269.71 deg TVD: 7004.08 ft

16600

S: 174 MD: 16571.00 ft Inc: 91.24  
deg Az: 269.40 deg TVD: 7001.83 ft

16700

S: 175 MD: 16666.00 ft Inc: 89.46  
deg Az: 270.02 deg TVD: 7001.24 ft



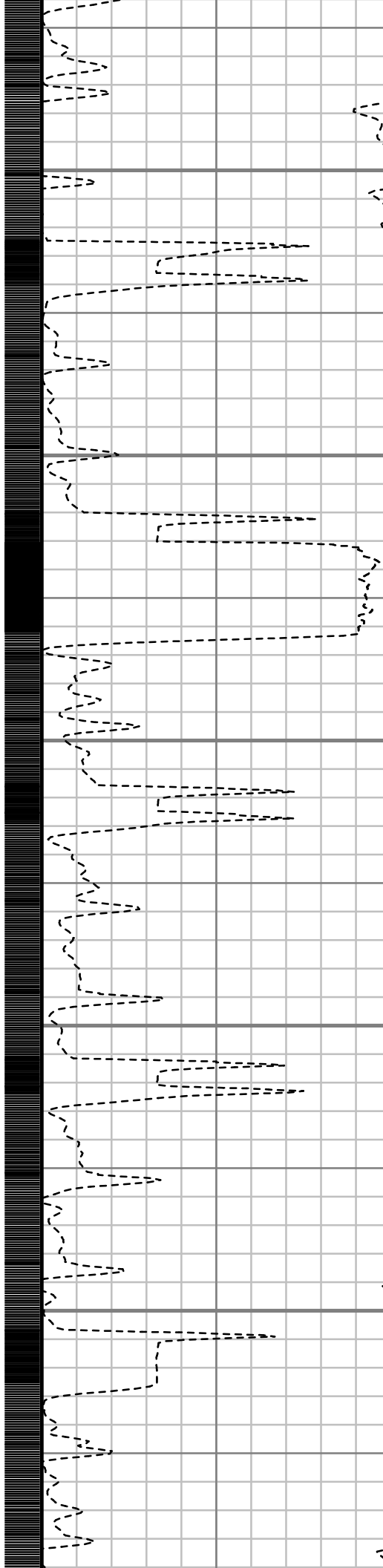
16800

16900

17000

17100

17200



S: 176 MD: 16761.00 ft Inc: 90.34  
deg Az: 271.58 deg TVD: 7001.41 ft

S: 177 MD: 16856.00 ft Inc: 91.31  
deg Az: 271.37 deg TVD: 7000.05 ft

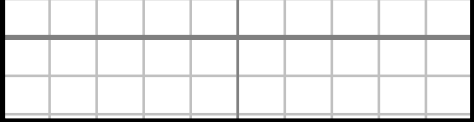
S: 178 MD: 16950.00 ft Inc: 88.73  
deg Az: 271.67 deg TVD: 7000.02 ft

S: 179 MD: 17046.00 ft Inc: 88.79  
deg Az: 271.93 deg TVD: 7002.09 ft

S: 180 MD: 17140.00 ft Inc: 90.34  
deg Az: 271.49 deg TVD: 7002.81 ft

S: 181 MD: 17235.00 ft Inc: 91.71  
deg Az: 271.17 deg TVD: 7001.11 ft

S: 182 MD: 17253.00 ft Inc: 92.01  
deg Az: 271.34 deg TVD: 7000.53 ft

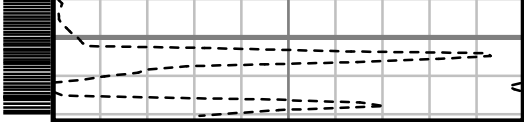


Gamma Ray (GR)

0 Unit = aapi 200

17300

MEASURED DEPTH  
1:600 (ft)



Rate of Penetration (ROP)

600 Unit = ft/hr 0

Comments



GAMMA RAY

2" = 100' FEET MD