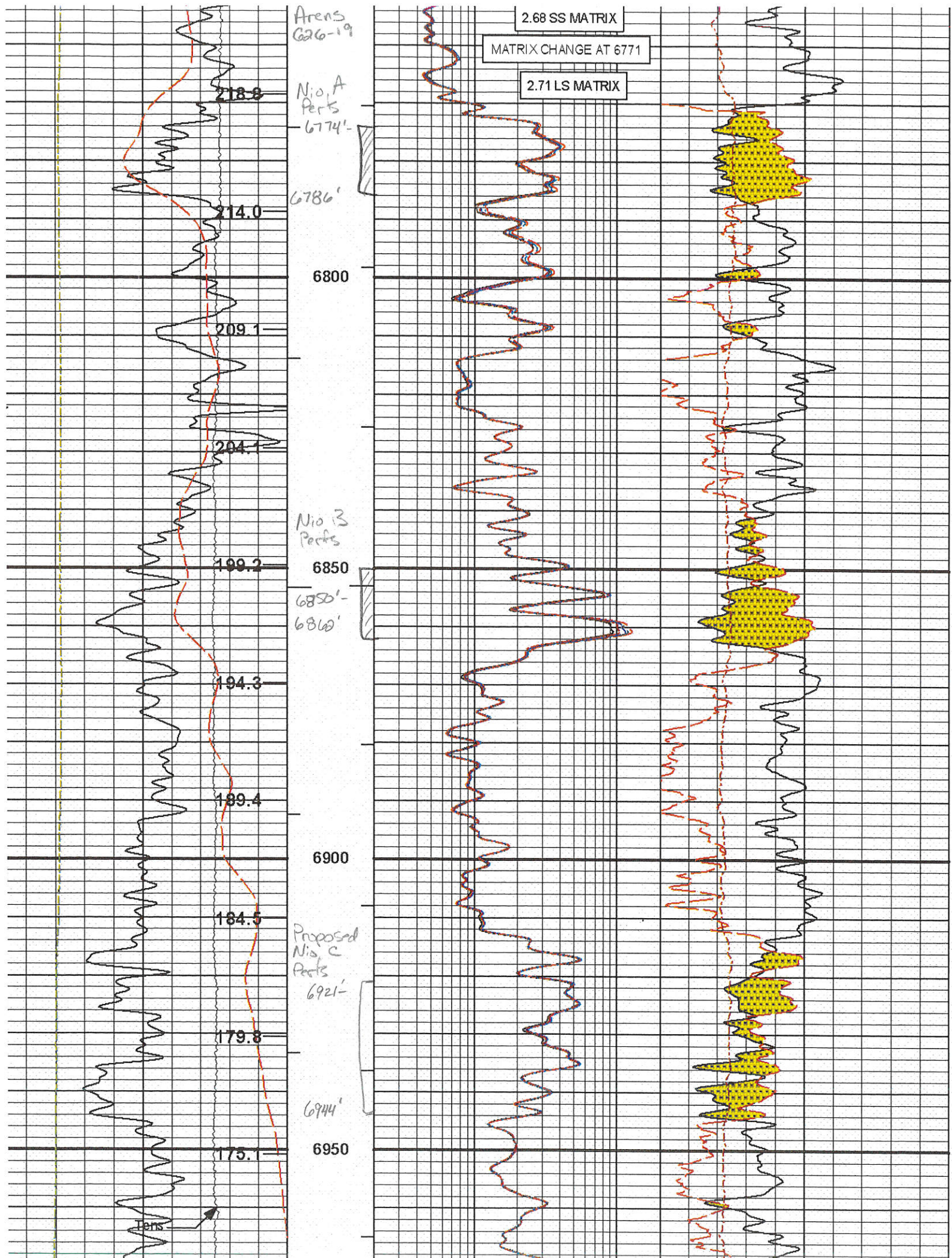
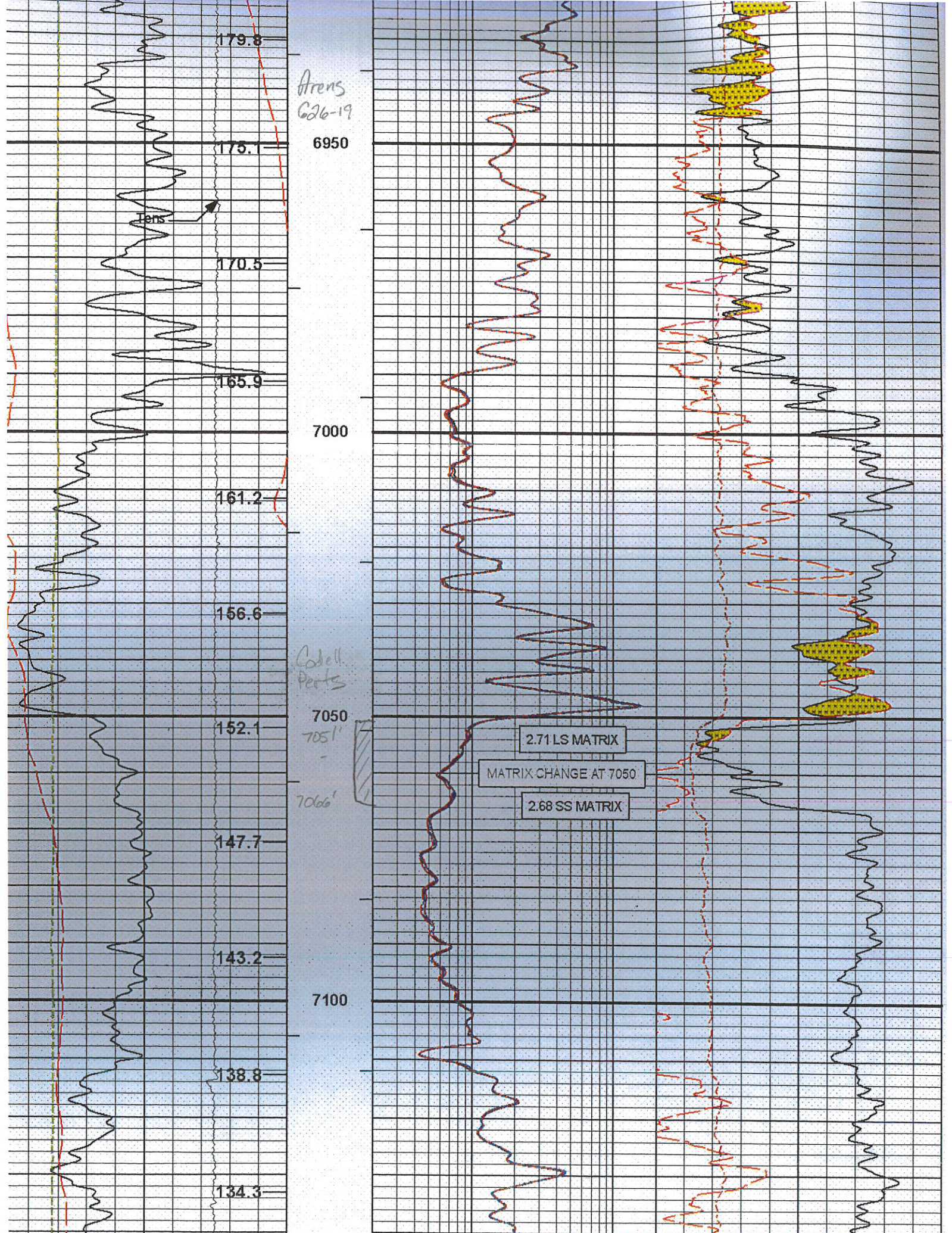


Ports Marked
HALLIBURTON

**SPECTRAL DENSITY
DUAL SPACED NEUTRON
ARRAY COMPENSATED
TRUE RESISTIVITY**

NOBLE ARENS G26-19 WATTENBERG WELD CO	COMPANY NOBLE WELL ARENS G26-19 FIELD WATTENBERG COUNTY WELD STATE CO	
	API No. 05123306080000 Location SHL 1480' FNL & 1300' FWL SEC 26 BHL 1480' FNL & 1300' FWL SEC 26 LAT: 40 2865° LONG: -104 63536°	Other Services RWCH GTET IDT ICT CSNG
COMPANY WELL FIELD COUNTY STATE	Sect. 26 Twp. 4N Rge. 65W	
Permanent Datum	GL	Elev. 4720.0 ft
Log measured from	KB	16.0 ft above perm. Datum
Drilling measured from	KB	
Date	17-Mar-10	
Run No.	ONE	
Depth - Driller	7748.00 ft	
Depth - Logger	7749.0 ft	
Bottom - Logged Interval	7739 ft	
Top - Logged Interval	614 ft	
Casing - Driller	8.625 in @ 608.0 ft	@
Casing - Logger	614.0 ft	
Bit Size	7.875 in	@
Type Fluid in Hole	WBM	
Density	9.5 ppg	37.00 s/qt
PH	8.00 pH	19.2 cptrn
Source of Sample	FLOWLINE	
Rm @ Meas. Temperature	2.58 ohmm @ 82.30 degF	@
Rmf @ Meas. Temperature	2.56 ohmm @ 75.00 degF	@
Rmc @ Meas. Temperature	2.26 ohmm @ 75.00 degF	@
Source Rmf	CHART	CHART
Rm @ BHT	0.98 ohmm @ 228.0 degF	@
Time Since Circulation	7.0 hr	
Time on Bottom	18-Mar-10 00:00	
Max. Rec. Temperature	228.0 degF @ 7749.0 ft	@
Equipment	10549597	BRIGHTON
Recorded By	C. BLUE	
Witnessed By	JEREMY STOLTZ	





Arens
626-19

J Sand
Perfs
7531'

7547'

7550

7554'

7557'

50.2

46.0

41.7

37.5

33.1

28.8

24.3

19.8

15.4

12.3

Tens

7600

7650

7700

2.00 00 NATIVA

