

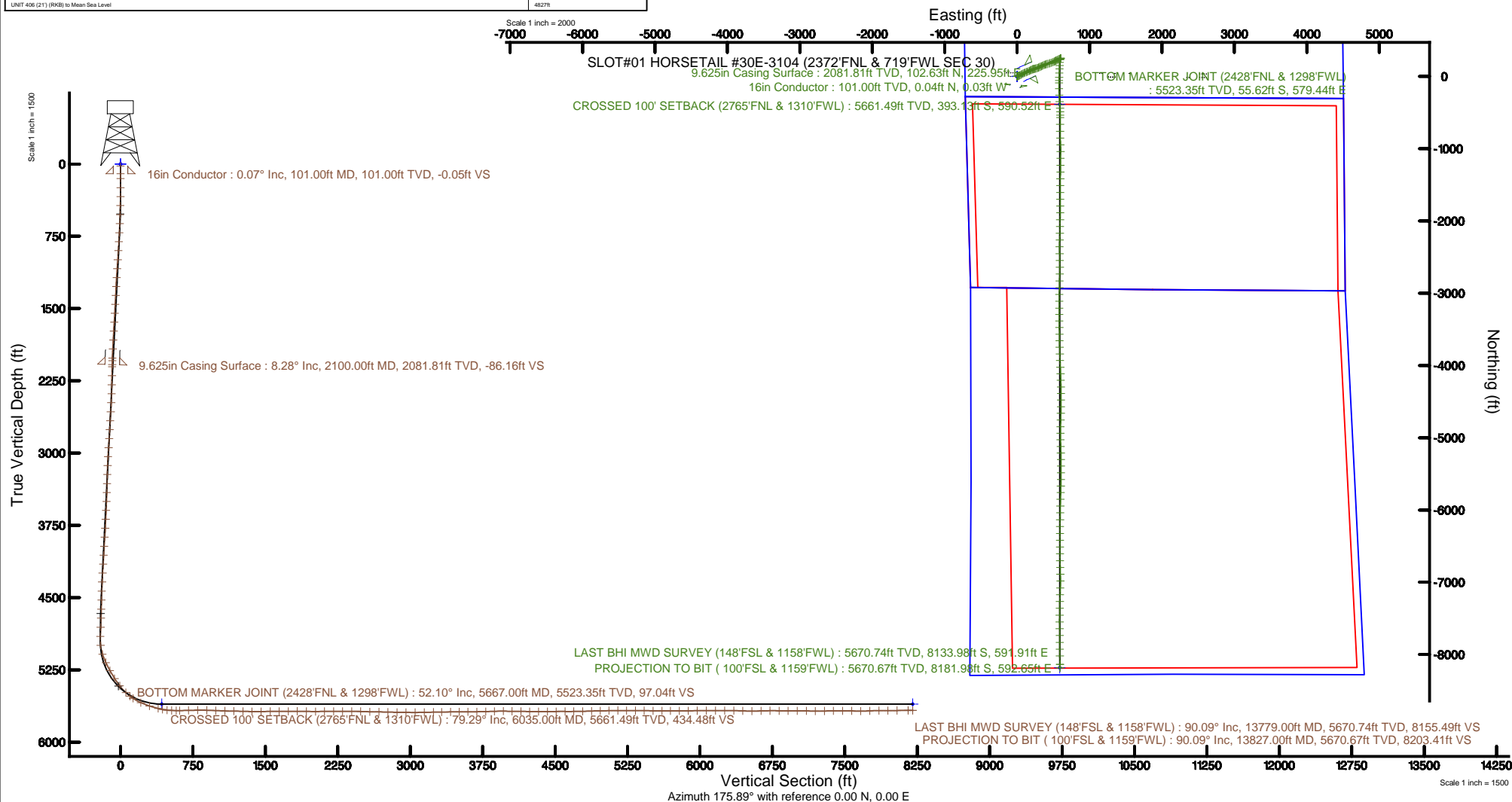
Location:	COLORADO	Slot:	SLOT#01 HORSETAIL #30E-3104 (2372'FNL & 719'FWL SEC 30)
Field:	WELD COUNTY	Well:	HORSETAIL #30E-3104
Facility:	SEC.30-T10N-R57W	Wellbore:	HORSETAIL #30E-3104 PWB



Plot reference wellpath is HORSETAL #306-3104 REV-A-0 FWP	Grid System: NAD83 / Lambert Colorado SP, Northern Zone (501), US feet
True vertical depths are referenced to UNIT 406 (21) (R9B)	* = Wellpath was transformed from a different geospatial datum
Measured depths are referenced to UNIT 406 (21) (R9B)	North Reference: True north
UNIT 406 (21) (R9B) to Mean Sea Level: 4827 feet	Scale: True distance
Mean Sea Level to Mud line (At Slot: SLOT#01 HORSETAL #306-3104 (2332FNL & 719FPWL SEC 30)) is 0 feet	Depths are in feet
Coordinates are in feet referenced to Slot	Created by: coddaman on 2017-01-19
	Database: WA_DEN_Denver_Dets

Location Information

Facility Name				Grid East (US ft)	Grid North (US ft)	Latitude	Longitude
SEC 30-T10N-R57W				3470348.811	1542643.145	40°48'38.040"N	103°48'02.880"W
Spot	Local N (ft)	Local E (ft)	Grid East (US ft)	Grid North (US ft)	Latitude	Longitude	
SLOT#01 HORSETAIL #306-3104 (2372FNL & 719FW SEC 30)	0.00	0.00	3470348.811	1542643.145	40°48'38.040"N	103°48'02.880"W	
UNIT 406 (21) (RKB) to Mud line (At Slot: SLOT#01 HORSETAIL #306-3104 (2372FNL & 719FW SEC 30))							4827ft
Mean Sea Level to Mud line (At Slot: SLOT#01 HORSETAIL #306-3104 (2372FNL & 719FW SEC 30))							0ft
UNIT 406 (21) (RKB) to Mean Sea Level							4827ft





Actual Wellpath Report

HORSETAIL #30E-3104 AWP

Page 1 of 9



REFERENCE WELLPATH IDENTIFICATION

Operator	WHITING OIL & GAS CORPORATION	Slot	SLOT#01 HORSETAIL #30E-3104 (2372'FNL & 719'FWL SEC 30)
Area	COLORADO	Well	HORSETAIL #30E-3104
Field	WELD COUNTY	Wellbore	HORSETAIL #30E-3104 AWB
Facility	SEC.30-T10N-R57W		

REPORT SETUP INFORMATION

Projection System	NAD83 / Lambert Colorado SP, Northern Zone (501), US feet	Software System	WellArchitect® 5.0
North Reference	True	User	Cookdanm
Scale	1.000005	Report Generated	1/19/17 at 11:28:23 AM
Convergence at slot	1.10° East	Database/Source file	WA_DEN_Denver_Defn/HORSETAIL_#30E-3104_AWP.xml

WELLPATH LOCATION

	Local coordinates		Grid coordinates		Geographic coordinates	
	North[ft]	East[ft]	Easting[US ft]	Northing[US ft]	Latitude	Longitude
Slot Location	0.00	0.00	3470349.81	1542643.15	40°48'38.040"N	103°48'02.880"W
Facility Reference Pt			3470349.81	1542643.15	40°48'38.040"N	103°48'02.880"W
Field Reference Pt			3471270.16	1558347.59	40°51'13.010"N	103°47'46.990"W

WELLPATH DATUM

Calculation method	Minimum curvature	UNIT 406 (21') (RKB) to Facility Vertical Datum	4827.00ft
Horizontal Reference Pt	Slot	UNIT 406 (21') (RKB) to Mean Sea Level	4827.00ft
Vertical Reference Pt	UNIT 406 (21') (RKB)	UNIT 406 (21') (RKB) to Mud Line at Slot (SLOT#01 HORSETAIL #30E-3104 (2372'FNL & 719'FWL SEC 30))	4827.00ft
MD Reference Pt	UNIT 406 (21') (RKB)	Section Origin	N 0.00, E 0.00 ft
Field Vertical Reference	Mean Sea Level	Section Azimuth	175.89°



Actual Wellpath Report

HORSETAIL #30E-3104 AWP

Page 2 of 9



REFERENCE WELLPATH IDENTIFICATION

Operator	WHITING OIL & GAS CORPORATION	Slot	SLOT#01 HORSETAIL #30E-3104 (2372'FNL & 719'FWL SEC 30)
Area	COLORADO	Well	HORSETAIL #30E-3104
Field	WELD COUNTY	Wellbore	HORSETAIL #30E-3104 AWB
Facility	SEC.30-T10N-R57W		

WELLPATH DATA (154 stations) † = interpolated/extrapolated station

MD [ft]	Inclination [°]	Azimuth [°]	TVD [ft]	Vert Sect [ft]	North [ft]	East [ft]	DLS [°/100ft]	Comments
0.00†	0.000	328.570	0.00	0.00	0.00	0.00	0.00	
21.00	0.000	328.570	21.00	0.00	0.00	0.00	0.00	
150.00	0.120	328.570	150.00	-0.12	0.12	-0.07	0.09	
245.00	0.000	7.340	245.00	-0.21	0.20	-0.12	0.13	
339.00	2.080	69.770	338.98	-0.68	0.79	1.48	2.21	
432.00	4.200	71.450	431.83	-2.00	2.46	6.29	2.28	
527.00	5.590	69.520	526.49	-4.17	5.18	13.92	1.47	
620.00	8.110	68.050	618.81	-7.46	9.22	24.25	2.72	
715.00	7.730	64.250	712.91	-11.87	14.50	36.22	0.68	
809.00	8.300	62.800	805.99	-16.86	20.35	47.95	0.64	
903.00	7.580	58.160	899.09	-22.40	26.72	59.25	1.02	
998.00	8.180	58.530	993.19	-28.42	33.55	70.34	0.63	
1092.00	9.580	61.460	1086.06	-34.73	40.78	82.92	1.56	
1186.00	9.520	63.960	1178.76	-40.87	47.93	96.77	0.45	
1279.00	9.410	70.200	1270.50	-45.80	53.88	110.84	1.11	
1373.00	9.420	69.530	1363.23	-50.04	59.18	125.27	0.12	
1467.00	9.820	68.440	1455.91	-54.61	64.81	139.94	0.47	
1561.00	9.800	66.530	1548.53	-59.66	70.95	154.73	0.35	
1655.00	9.140	64.410	1641.25	-65.05	77.36	168.80	0.79	
1749.00	7.910	61.190	1734.21	-70.49	83.70	181.20	1.40	
1843.00	7.850	62.700	1827.33	-75.72	89.76	192.57	0.23	
1937.00	7.940	67.190	1920.44	-80.32	95.22	204.26	0.66	
2032.00	8.040	71.130	2014.51	-84.12	99.91	216.60	0.59	
2060.00	8.300	73.660	2042.23	-85.05	101.12	220.39	1.58	
2123.00	8.270	77.170	2104.57	-86.70	103.40	229.17	0.80	
2217.00	7.920	76.900	2197.64	-88.73	106.37	242.07	0.37	
2311.00	7.790	76.150	2290.75	-90.82	109.36	254.56	0.18	
2406.00	8.480	76.310	2384.80	-93.08	112.56	267.62	0.73	
2500.00	9.490	69.740	2477.65	-96.38	116.89	281.62	1.53	
2595.00	9.510	64.850	2571.34	-101.38	122.93	296.08	0.85	



Actual Wellpath Report

HORSETAIL #30E-3104 AWP

Page 3 of 9



REFERENCE WELLPATH IDENTIFICATION

Operator	WHITING OIL & GAS CORPORATION	Slot	SLOT#01 HORSETAIL #30E-3104 (2372'FNL & 719'FWL SEC 30)
Area	COLORADO	Well	HORSETAIL #30E-3104
Field	WELD COUNTY	Wellbore	HORSETAIL #30E-3104 AWP
Facility	SEC.30-T10N-R57W		

WELLPATH DATA (154 stations)

MD [ft]	Inclination [°]	Azimuth [°]	TVD [ft]	Vert Sect [ft]	North [ft]	East [ft]	DLS [°/100ft]	Comments
2689.00	9.200	65.120	2664.09	-106.83	129.39	309.92	0.33	
2784.00	8.990	64.380	2757.90	-112.24	135.80	323.50	0.25	
2878.00	8.950	63.110	2850.75	-117.77	142.28	336.65	0.21	
2972.00	8.810	62.210	2943.62	-123.49	148.94	349.54	0.21	
3066.00	8.610	61.830	3036.54	-129.25	155.62	362.11	0.22	
3161.00	8.920	72.450	3130.44	-133.86	161.20	375.40	1.73	
3255.00	8.520	73.050	3223.35	-137.10	165.43	389.01	0.44	
3349.00	8.370	71.550	3316.33	-140.34	169.62	402.16	0.28	
3443.00	9.890	79.960	3409.14	-142.87	173.20	416.60	2.15	
3538.00	11.720	73.870	3502.46	-145.72	177.30	433.90	2.27	
3632.00	11.670	74.800	3594.50	-149.53	182.45	452.25	0.21	
3726.00	10.900	72.700	3686.69	-153.39	187.58	469.91	0.93	
3820.00	9.520	63.130	3779.20	-158.43	193.74	485.33	2.32	
3915.00	8.850	65.180	3872.98	-164.05	200.36	498.97	0.78	
4010.00	8.590	65.640	3966.89	-169.09	206.35	512.07	0.28	
4104.00	8.580	60.440	4059.83	-174.53	212.71	524.56	0.83	
4198.00	8.460	61.770	4152.80	-180.37	219.43	536.75	0.25	
4292.00	8.010	62.000	4245.83	-185.85	225.78	548.63	0.48	
4386.00	7.410	63.540	4338.98	-190.80	231.56	559.84	0.68	
4480.00	6.850	69.190	4432.25	-194.72	236.25	570.51	0.95	
4574.00	6.140	73.760	4525.65	-197.38	239.65	580.57	0.93	
4669.00	5.890	73.170	4620.13	-199.52	242.48	590.12	0.27	
4763.00	4.260	56.990	4713.76	-202.27	245.78	597.66	2.29	
4858.00	2.600	31.270	4808.59	-205.74	249.54	601.74	2.34	
4952.00	2.010	345.930	4902.52	-209.10	252.96	602.44	1.98	
5046.00	6.260	203.630	4996.36	-206.18	249.86	599.99	8.45	
5140.00	19.000	196.580	5087.90	-187.25	230.42	593.54	13.63	
5234.00	26.220	182.630	5174.68	-152.24	194.94	588.21	9.52	
5328.00	28.480	181.670	5258.17	-109.32	151.79	586.60	2.45	
5423.00	32.520	181.730	5340.01	-61.36	103.60	585.17	4.25	



Actual Wellpath Report

HORSETAIL #30E-3104 AWP

Page 4 of 9



REFERENCE WELLPATH IDENTIFICATION

Operator	WHITING OIL & GAS CORPORATION	Slot	SLOT#01 HORSETAIL #30E-3104 (2372'FNL & 719'FWL SEC 30)
Area	COLORADO	Well	HORSETAIL #30E-3104
Field	WELD COUNTY	Wellbore	HORSETAIL #30E-3104 AWB
Facility	SEC.30-T10N-R57W		

WELLPATH DATA (154 stations) † = interpolated/extrapolated station

MD [ft]	Inclination [°]	Azimuth [°]	TVD [ft]	Vert Sect [ft]	North [ft]	East [ft]	DLS [°/100ft]	Comments
5517.00	38.460	183.570	5416.51	-7.20	49.12	582.58	6.42	
5611.00	45.350	181.150	5486.43	55.14	-13.56	580.09	7.53	
5667.00†	52.105	180.641	5523.35	97.04	-55.62	579.44	12.08	BOTTOM MARKER JOINT (2428'FNL & 1298'FWL)
5706.00	56.810	180.340	5546.02	128.67	-87.35	579.17	12.08	
5800.00	65.800	180.060	5591.11	210.80	-169.72	578.89	9.57	
5895.00	72.400	176.920	5624.98	299.40	-258.37	581.28	7.60	
5989.00	75.090	175.530	5651.29	389.63	-348.41	587.23	3.19	
6035.00†	79.288	176.071	5661.49	434.48	-393.13	590.52	9.20	CROSSED 100' SETBACK (2765'FNL & 1310'FWL)
6083.00	83.670	176.620	5668.60	481.93	-440.49	593.54	9.20	
6131.00	88.520	180.060	5671.87	529.76	-488.34	594.92	12.38	
6177.00	89.690	180.190	5672.59	575.62	-534.33	594.82	2.56	
6212.00	90.620	180.240	5672.50	610.52	-569.33	594.69	2.66	
6306.00	91.330	180.530	5670.90	704.22	-663.32	594.06	0.82	
6401.00	90.650	179.450	5669.25	798.96	-758.30	594.07	1.34	
6495.00	88.550	178.270	5669.91	892.83	-852.27	595.94	2.56	
6589.00	87.590	177.620	5673.08	986.71	-946.16	599.31	1.23	
6683.00	87.870	180.890	5676.80	1080.46	-1040.06	600.53	3.49	
6777.00	89.510	180.080	5678.95	1174.13	-1134.03	599.74	1.95	
6871.00	88.270	180.880	5680.77	1267.81	-1228.01	598.95	1.57	
6965.00	89.410	180.760	5682.67	1361.44	-1321.98	597.61	1.22	
7059.00	90.560	180.370	5682.70	1455.12	-1415.97	596.68	1.29	
7154.00	90.740	180.210	5681.62	1549.84	-1510.96	596.20	0.25	
7248.00	89.720	180.410	5681.24	1643.55	-1604.96	595.69	1.11	
7342.00	91.170	180.450	5680.51	1737.25	-1698.95	594.98	1.54	
7436.00	89.780	179.820	5679.73	1830.99	-1792.95	594.76	1.62	
7530.00	88.430	180.510	5681.20	1924.71	-1886.93	594.49	1.61	
7625.00	90.030	180.770	5682.48	2019.38	-1981.91	593.43	1.71	
7719.00	91.360	180.650	5681.34	2113.03	-2075.90	592.27	1.42	
7813.00	89.540	181.300	5680.60	2206.66	-2169.88	590.67	2.06	
7907.00	90.800	182.010	5680.32	2300.18	-2263.83	587.95	1.54	



Actual Wellpath Report

HORSETAIL #30E-3104 AWP

Page 5 of 9



REFERENCE WELLPATH IDENTIFICATION

Operator	WHITING OIL & GAS CORPORATION	Slot	SLOT#01 HORSETAIL #30E-3104 (2372'FNL & 719'FWL SEC 30)
Area	COLORADO	Well	HORSETAIL #30E-3104
Field	WELD COUNTY	Wellbore	HORSETAIL #30E-3104 AWB
Facility	SEC.30-T10N-R57W		

WELLPATH DATA (154 stations)

MD [ft]	Inclination [°]	Azimuth [°]	TVD [ft]	Vert Sect [ft]	North [ft]	East [ft]	DLS [°/100ft]	Comments
8001.00	89.570	180.090	5680.02	2393.79	-2357.81	586.23	2.43	
8095.00	87.840	178.600	5682.14	2487.59	-2451.78	587.30	2.43	
8189.00	88.710	178.750	5684.97	2581.43	-2545.71	589.48	0.94	
8284.00	89.350	180.740	5686.58	2676.20	-2640.69	589.90	2.20	
8377.00	88.370	181.440	5688.43	2768.80	-2733.65	588.13	1.29	
8472.00	89.350	181.270	5690.32	2863.34	-2828.60	585.89	1.05	
8566.00	89.040	180.730	5691.64	2956.96	-2922.58	584.24	0.66	
8661.00	90.120	180.640	5692.34	3051.62	-3017.57	583.11	1.14	
8755.00	91.330	180.540	5691.15	3145.30	-3111.55	582.14	1.29	
8850.00	91.050	180.110	5689.18	3239.99	-3206.53	581.60	0.54	
8936.00	90.340	179.650	5688.13	3325.77	-3292.52	581.78	0.98	
9027.00	91.200	179.510	5686.91	3416.58	-3383.51	582.45	0.96	
9118.00	89.350	179.450	5686.47	3507.39	-3474.50	583.28	2.03	
9209.00	90.310	179.360	5686.74	3598.22	-3565.50	584.22	1.06	
9300.00	91.760	179.220	5685.10	3689.04	-3656.47	585.35	1.60	
9392.00	90.890	178.390	5682.97	3780.90	-3748.43	587.27	1.31	
9483.00	92.280	178.280	5680.45	3871.78	-3839.35	589.91	1.53	
9575.00	89.260	177.840	5679.22	3963.69	-3931.28	593.02	3.32	
9666.00	90.090	177.360	5679.73	4054.65	-4022.20	596.83	1.05	
9757.00	88.330	178.520	5680.99	4145.58	-4113.12	600.10	2.32	
9849.00	89.260	178.440	5682.92	4237.46	-4205.07	602.54	1.01	
9940.00	90.400	178.500	5683.19	4328.37	-4296.04	604.97	1.25	
10032.00	89.540	180.110	5683.24	4420.20	-4388.03	606.09	1.98	
10123.00	91.420	180.080	5682.48	4510.95	-4479.02	605.94	2.07	
10215.00	89.040	180.650	5682.11	4602.66	-4571.01	605.35	2.66	
10306.00	91.420	181.440	5681.75	4693.28	-4661.99	603.69	2.76	
10398.00	90.590	181.330	5680.13	4784.84	-4753.94	601.47	0.91	
10491.00	92.130	181.410	5677.92	4877.39	-4846.89	599.25	1.66	
10582.00	90.460	179.380	5675.87	4968.07	-4937.86	598.62	2.89	
10672.00	91.630	179.230	5674.23	5057.90	-5027.83	599.71	1.31	



Actual Wellpath Report

HORSETAIL #30E-3104 AWP

Page 6 of 9



REFERENCE WELLPATH IDENTIFICATION

Operator	WHITING OIL & GAS CORPORATION	Slot	SLOT#01 HORSETAIL #30E-3104 (2372'FNL & 719'FWL SEC 30)
Area	COLORADO	Well	HORSETAIL #30E-3104
Field	WELD COUNTY	Wellbore	HORSETAIL #30E-3104 AWB
Facility	SEC.30-T10N-R57W		

WELLPATH DATA (154 stations)

MD [ft]	Inclination [°]	Azimuth [°]	TVD [ft]	Vert Sect [ft]	North [ft]	East [ft]	DLS [°/100ft]	Comments
10764.00	90.620	177.850	5672.42	5149.78	-5119.78	602.06	1.86	
10855.00	89.230	179.770	5672.54	5240.65	-5210.75	603.95	2.60	
10946.00	90.770	179.740	5672.54	5331.44	-5301.75	604.33	1.69	
11037.00	88.270	180.150	5673.30	5422.20	-5392.74	604.42	2.78	
11129.00	89.170	179.910	5675.36	5513.94	-5484.72	604.37	1.01	
11221.00	90.830	179.900	5675.36	5605.71	-5576.71	604.53	1.80	
11311.00	89.010	181.360	5675.48	5695.40	-5666.70	603.54	2.59	
11403.00	89.850	181.530	5676.40	5786.96	-5758.67	601.22	0.93	
11495.00	91.330	181.490	5675.45	5878.51	-5850.63	598.79	1.61	
11589.00	89.750	181.070	5674.56	5972.08	-5944.60	596.69	1.74	
11684.00	92.000	180.970	5673.11	6066.69	-6039.56	595.00	2.37	
11779.00	88.520	180.770	5672.68	6161.31	-6134.54	593.56	3.67	
11873.00	89.970	180.570	5673.92	6254.97	-6228.52	592.46	1.56	
11968.00	89.660	180.400	5674.23	6349.67	-6323.52	591.66	0.37	
12062.00	87.900	179.870	5676.23	6443.38	-6417.49	591.44	1.96	
12157.00	89.940	180.220	5678.02	6538.11	-6512.47	591.36	2.18	
12251.00	91.940	180.220	5676.48	6631.83	-6606.45	591.00	2.13	
12345.00	90.550	178.610	5674.44	6725.62	-6700.42	591.96	2.26	
12439.00	88.710	178.550	5675.04	6819.51	-6794.38	594.29	1.96	
12533.00	90.680	178.430	5675.54	6913.41	-6888.34	596.77	2.10	
12627.00	89.970	180.060	5675.01	7007.24	-6982.33	598.00	1.89	
12722.00	88.340	181.890	5676.41	7101.85	-7077.30	596.39	2.58	
12816.00	90.000	182.100	5677.77	7195.30	-7171.23	593.12	1.78	
12910.00	90.490	181.510	5677.37	7288.80	-7265.18	590.16	0.82	
13004.00	90.680	180.680	5676.41	7382.41	-7359.16	588.36	0.91	
13099.00	90.590	180.560	5675.36	7477.08	-7454.15	587.33	0.16	
13193.00	88.120	179.900	5676.42	7570.79	-7548.13	586.95	2.72	
13287.00	89.970	179.870	5677.98	7664.55	-7642.12	587.14	1.97	
13381.00	92.530	179.670	5675.93	7758.30	-7736.08	587.52	2.73	
13476.00	90.830	180.170	5673.15	7853.02	-7831.04	587.65	1.87	



Actual Wellpath Report

HORSETAIL #30E-3104 AWP

Page 7 of 9



REFERENCE WELLPATH IDENTIFICATION

Operator	WHITING OIL & GAS CORPORATION	Slot	SLOT#01 HORSETAIL #30E-3104 (2372'FNL & 719'FWL SEC 30)
Area	COLORADO	Well	HORSETAIL #30E-3104
Field	WELD COUNTY	Wellbore	HORSETAIL #30E-3104 AWB
Facility	SEC.30-T10N-R57W		

WELLPATH DATA (154 stations)

MD [ft]	Inclination [°]	Azimuth [°]	TVD [ft]	Vert Sect [ft]	North [ft]	East [ft]	DLS [°/100ft]	Comments
13570.00	89.450	179.000	5672.92	7946.82	-7925.03	588.33	1.92	
13664.00	91.390	178.970	5672.23	8040.68	-8019.01	590.00	2.06	
13779.00	90.090	179.120	5670.74	8155.49	-8133.98	591.91	1.14	LAST BHI MWD SURVEY (148'FSL & 1158'FWL)
13827.00	90.090	179.120	5670.67	8203.41	-8181.98	592.65	0.00	PROJECTION TO BIT (100'FSL & 1159'FWL)

HOLE & CASING SECTIONS - Ref Wellbore: HORSETAIL #30E-3104 AWB Ref Wellpath: HORSETAIL #30E-3104 AWP

String/Diameter	Start MD [ft]	End MD [ft]	Interval [ft]	Start TVD [ft]	End TVD [ft]	Start N/S [ft]	Start E/W [ft]	End N/S [ft]	End E/W [ft]
16in Conductor	21.00	101.00	80.00	21.00	101.00	0.00	0.00	0.04	-0.03
13.5in Open Hole	21.00	2115.00	2094.00	21.00	2096.66	0.00	0.00	103.14	228.05
9.625in Casing Surface	21.00	2100.00	2079.00	21.00	2081.81	0.00	0.00	102.63	225.95
8.5in Open Hole	2115.00	13827.00	11712.00	2096.66	5670.67	103.14	228.05	-8181.98	592.65



Actual Wellpath Report

HORSETAIL #30E-3104 AWP

Page 8 of 9



REFERENCE WELLPATH IDENTIFICATION

Operator	WHITING OIL & GAS CORPORATION	Slot	SLOT#01 HORSETAIL #30E-3104 (2372'FNL & 719'FWL SEC 30)
Area	COLORADO	Well	HORSETAIL #30E-3104
Field	WELD COUNTY	Wellbore	HORSETAIL #30E-3104 AWB
Facility	SEC.30-T10N-R57W		

TARGETS

Name	TVD [ft]	North [ft]	East [ft]	Grid East [US ft]	Grid North [US ft]	Latitude	Longitude	Shape
SEC. 30-T10N-R57W NORTHERN	0.00	0.00	0.00	3470349.81	1542643.15	40°48'38.040"N	103°48'02.880"W	polygon
SEC. 30-T10N-R57W SOUTHERN	0.00	0.00	0.00	3470349.81	1542643.15	40°48'38.040"N	103°48'02.880"W	polygon
SEC. 31-T10N-R57W	0.00	0.00	0.00	3470349.81	1542643.15	40°48'38.040"N	103°48'02.880"W	polygon
HORSETAIL #30E-3104 SOUTHERN SETBACKS (100' N/S/E 100' & 500' W)	5606.00	0.00	0.00	3470349.81	1542643.15	40°48'38.040"N	103°48'02.880"W	polygon
HORSETAIL #30E-3104 BHL REV-1 ON PLAT (100'FSL & 1155'FWL SEC 31)	5606.00	-8182.39	588.44	3471094.93	1534473.51	40°47'17.190"N	103°47'55.230"W	point
HORSETAIL #30E-3104 LP REV-1 (2757'FNL & 1307'FWL SEC 30)	5606.00	-385.00	588.44	3470945.53	1542269.49	40°48'34.236"N	103°47'55.228"W	point

WELLPATH COMPOSITION - Ref Wellbore: HORSETAIL #30E-3104 AWB Ref Wellpath: HORSETAIL #30E-3104 AWP

Start MD [ft]	End MD [ft]	Positional Uncertainty Model	Log Name/Comment	Wellbore
21.00	2060.00	Custom BHI NaviTrak (IFR1, Standard Rotating, SAG) (Rockies 0.03Gt model)	BHI NAVITRAK MWD, ROCKIES GT, SURCON CORRECTED IFR SAG 13 1/2" <150-2060>	HORSETAIL #30E-3104 AWB
2060.00	13779.00	Custom BHI NaviTrak (IFR1, Standard Rotating, SAG) (Rockies 0.03Gt model)	BHI NAVITRAK MWD, ROCKIES GT, SURCON CORRECTED IFR & SAG 8 1/2" <2123-13779>	HORSETAIL #30E-3104 AWB
13779.00	13827.00	Blind Drilling (std)	Projection to bit	HORSETAIL #30E-3104 AWB



Actual Wellpath Report

HORSETAIL #30E-3104 AWP

Page 9 of 9



REFERENCE WELLPATH IDENTIFICATION

Operator	WHITING OIL & GAS CORPORATION	Slot	SLOT#01 HORSETAIL #30E-3104 (2372'FNL & 719'FWL SEC 30)
Area	COLORADO	Well	HORSETAIL #30E-3104
Field	WELD COUNTY	Wellbore	HORSETAIL #30E-3104 AWB
Facility	SEC.30-T10N-R57W		

WELLPATH COMMENTS

MD [ft]	Inclination [°]	Azimuth [°]	TVD [ft]	Comment
5667.00	52.105	180.641	5523.35	BOTTOM MARKER JOINT (2428'FNL & 1298'FWL)
6035.00	79.288	176.071	5661.49	CROSSED 100' SETBACK (2765'FNL & 1310'FWL)
13779.00	90.090	179.120	5670.74	LAST BHI MWD SURVEY (148'FSL & 1158'FWL)
13827.00	90.090	179.120	5670.67	PROJECTION TO BIT (100'FSL & 1159'FWL)