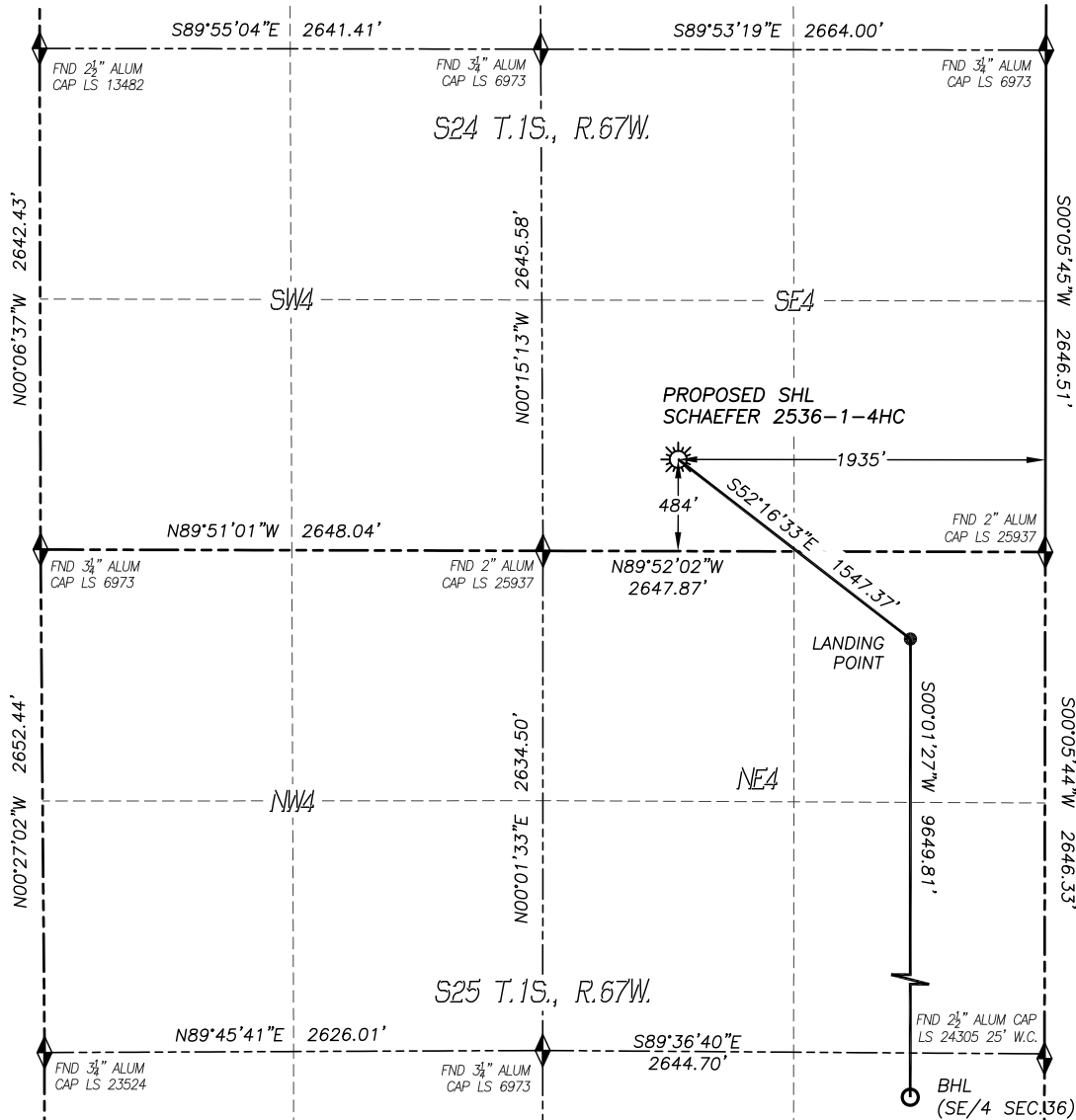


# WELL LOCATION CERTIFICATE

## SCHAEFER 2536-1-4HC

SECTION: 24  
TOWNSHIP: 1S  
RANGE: 67W



0 500 1000  
SCALE: 1" = 1000'

IN ACCORDANCE WITH A REQUEST FROM WARD PETROLEUM, DALEY LAND SURVEYING, INC. HAS DETERMINED THE SURFACE LOCATION OF THE SCHAEFER 2536-1-4HC WELL TO BE 484' FSL, 1935' FEL, AS MEASURED AT NINETY (90) DEGREES FROM THE SECTION LINES OF SECTION 24, TOWNSHIP 1 SOUTH, RANGE 67 WEST, AND THE BOTTOM HOLE LOCATION TO BE 460' FSL, 710' FEL, AS MEASURED AT NINETY (90) DEGREES FROM THE SECTION LINES OF SECTION 36, TOWNSHIP 1 SOUTH, RANGE 67 WEST OF THE 6TH PRINCIPAL MERIDIAN, ADAMS COUNTY, COLORADO.

I HEREBY CERTIFY THAT THIS WELL LOCATION CERTIFICATE WAS PREPARED BY ME OR UNDER MY DIRECT SUPERVISION, THAT THE WORK WAS COMPLETED ON 10/5/2015 FOR AND ON BEHALF OF WARD PETROLEUM, AND THAT THIS MAP DOES NOT REPRESENT A BOUNDARY SURVEY, IT IS NOT A LAND SURVEY PLAT OR AN IMPROVEMENT SURVEY PLAT AND IT IS NOT TO BE RELIED UPON FOR THE ESTABLISHMENT OF FENCE, BUILDING OR OTHER FUTURE IMPROVEMENT LINES.

### NOTES:

- 1) BEARINGS FOR THIS MAP ARE ASSUMED AND BASED UPON GPS OBSERVATIONS MADE BETWEEN MONUMENTS LOCATED AT THE SOUTHWEST CORNER AND SOUTH QUARTER CORNER OF SECTION 24, T.1S., R.67W.
- 2) HORIZONTAL DATUM IS NAD83.
- 3) VERTICAL DATUM IS NAVD88 AND ORIGINATES FROM THE LOCAL C.O.R.S. NETWORK, UTILIZING THE GEOID12A MODEL.
- 4) SEE LOCATION DRAWING FOR VISIBLE IMPROVEMENTS WITHIN 500' OF PROPOSED DISTURBED AREA.
- 5) SURFACE USE: AGRICULTURAL.
- 6) INST. OPERATOR: SCOTT ESTABROOKS

### NEAREST CULTURAL ITEMS:

BUILDING: 501'± SE  
BUILDING UNIT: 644'± SE  
HIGH OCC. BLD. UNIT: 5280'±  
DES. OUTSIDE ACTIVITY AREA: 5280'±  
PUBLIC ROAD: 465'± S  
ABOVE GROUND UTILITY: 500'± S  
RAILROAD: 1030'± NW  
PROPERTY LINE: 484'± S

### NAD 83 LATITUDE AND LONGITUDE

#### SURFACE LOCATION:

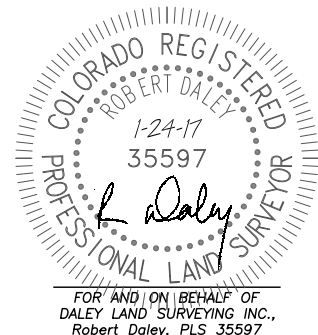
LATITUDE: N39.94465°  
LONGITUDE: W104.83474°  
ELEVATION: 5022'  
PDOP: 1.7  
QTR/QTR: SW4/SE4

#### LANDING POINT:

LATITUDE: N39.94205°  
LONGITUDE: W104.83037°  
FOOTAGE: 460' FNL, 710' FEL  
SEC. 25, T1S, R67W

#### BOTTOM HOLE:

LATITUDE: N39.91557°  
LONGITUDE: W104.83039°



SHEET 1 OF 2

Drawing Date: 1/24/17

# WELL LOCATION CERTIFICATE

## SCHAEFER 2536-1-4HC

SECTION: 24  
TOWNSHIP: 1S  
RANGE: 67W

