

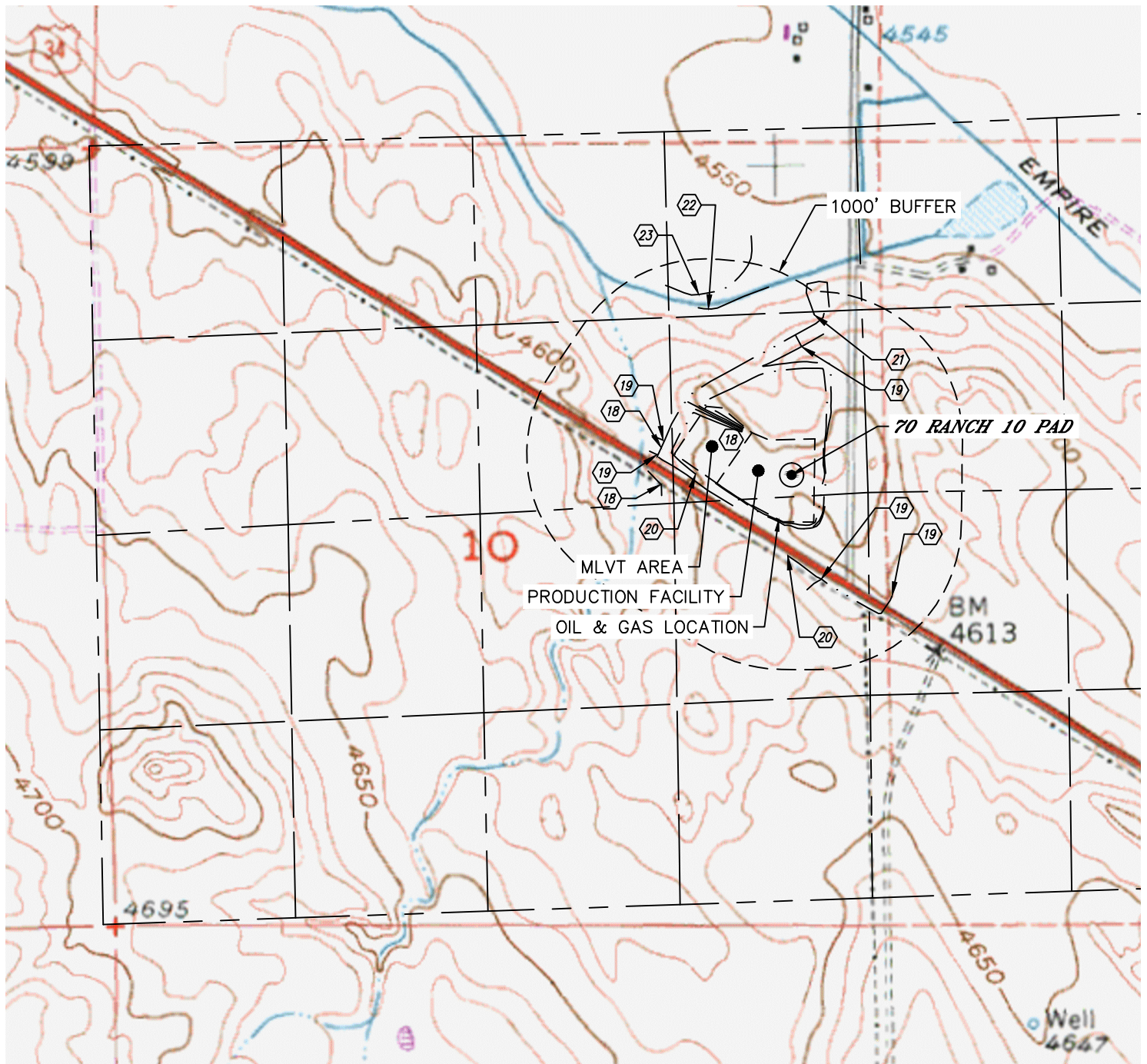


Lat40°, Inc. 6250 W. 10th Street, Unit 2, Greeley, CO 970-515-5294

HYDROLOGY MAP

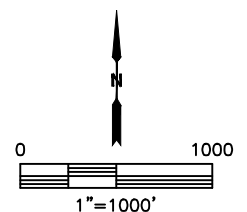
70 RANCH 10 PAD

SECTION: 10
TOWNSHIP: 4N
RANGE: 63W
6TH. P.M.
WELD COUNTY, CO



DISTANCES MEASURED FROM THE EDGE OF THE OIL AND GAS LOCATION.

- ⑮ SWALE 0' (INSIDE LOCATION), 98' NW, 223' SW
- ⑰ DITCH 119' & 120' NW, 390' & 729' SE, 626' N
- ⑳ BORROW DITCH 64' SW, 230' S
- ㉑ POND 841' N
- ㉒ LATHAM DITCH 662' N
- ㉓ RESERVOIR BED 761' N



NEAREST DOWN GRADIENT SURFACE WATER: SWALE (INSIDE LOCATION)

DATE: 12/16/2016
PROJECT#: 2016081