

# LEGEND:

- = PROPOSED WELLHEAD.
- = TOP OF GAS & TARGET BOTTOM HOLE.
- ▲ = SECTION CORNERS LOCATED.

Set Marked Stone  
Lat: 39.255430°  
Long: -107.820861°

## T9S, R93W, 6th P.M.

Top of Gas &  
Target Bottom Hole

N89°25'49"W - 5263.20' (Meas.)

2007 Alum. Cap,  
#17492, 0.7' High,  
Steel Post  
Lat: 39.255294°  
Long: -107.802283°

**BRUTON 19-20E**

64' FNL 1089' FEL  
Fin. Pad Elev = 7425.0'  
Lat: 39.255147°  
Long: -107.806128°

LOT 1

LOT 2

LOT 3

LOT 4

30

2009 Alum. Cap,  
#20141, 0.4' High  
Lat: 39.248124°  
Long: -107.820918°

1990 Alum. Cap,  
0.2' High, Stones,  
Fiberglass Marker  
Lat: 39.248136°  
Long: -107.802292°

1990 Alum. Cap,  
0.4' High  
Lat: 39.240819°  
Long: -107.820975°

1990 Alum. Cap,  
1.1' High  
Lat: 39.240881°  
Long: -107.802272°

R  
94  
W

R  
93  
W

S89°45'01"W - 2681.83' (Meas.)

S89°48'46"W - 2617.88' (Meas.)

1990 Alum. Cap,  
0.3' High  
Lat: 39.240855°  
Long: -107.811511°

### LINE TABLE

LINE	DIRECTION	LENGTH
L1	N28°31'55"W	566.68'

### NOTE DISTANCE TO NEAREST:

BUILDING: N31°W 4083'  
BUILDING UNIT: N31°W 4214'  
HOB: OVER A MILE  
DOAA: OVER A MILE  
PUBLIC ROAD: N09°E 5003'  
ABOVE GROUND UTILITY: N08°E 2058'  
RAILROAD: OVER A MILE  
PROPERTY LINE: N87°E 1090'

### NOTE:

- 1.) All latitudes and longitudes are given in NAD 83 coordinates.
- 2.) Distances to nearest section lines are measured perpendicularly.

THIS IS TO CERTIFY THAT THE ABOVE PLAT WAS PREPARED BY ME OR UNDER MY SUPERVISION AND THAT THE LOCATION HAS BEEN STAKED ON THE GROUND AS SHOWN ON THE PLAT AND THAT THE SAME ARE TRUE AND CORRECT TO THE BEST OF MY KNOWLEDGE AND BELIEF

### CERTIFICATE

REGISTERED SURVEYOR  
REGISTRATION NO. 12345  
STATE OF COLORADO

PDOP = 1.4



### BASIS OF BEARINGS

BASIS OF BEARINGS IS A GPS OBSERVATION

### BASIS OF ELEVATION

BENCHMARK (19 RDS) LOCATED IN THE SE 1/4 OF SECTION 16, T9S, R93W, 6th P.M., TAKEN FROM THE SOUTH MAIN PEAK, QUADRANGLE, COLORADO, 7.5 MINUTE QUAD (TOPOGRAPHIC MAP) PUBLISHED BY THE UNITED STATES DEPARTMENT OF THE INTERIOR, GEOLOGICAL SURVEY SAID ELEVATION IS MARKED AS BEING 7252 FEET

## LARAMIE ENERGY, LLC

**BRUTON 19-20E (SURFACE LOCATION)**  
NE 1/4 NE 1/4, SECTION 30, T9S, R93W, 6th P.M.  
MESA COUNTY, COLORADO

SURVEYED BY: BRADEN BOX, B.B. DATE: 03-27-15  
DRAWN BY: M.D. DATE DRAWN: 05-29-15  
SCALE: 1" = 1000'

## WELL LOCATION PLAT



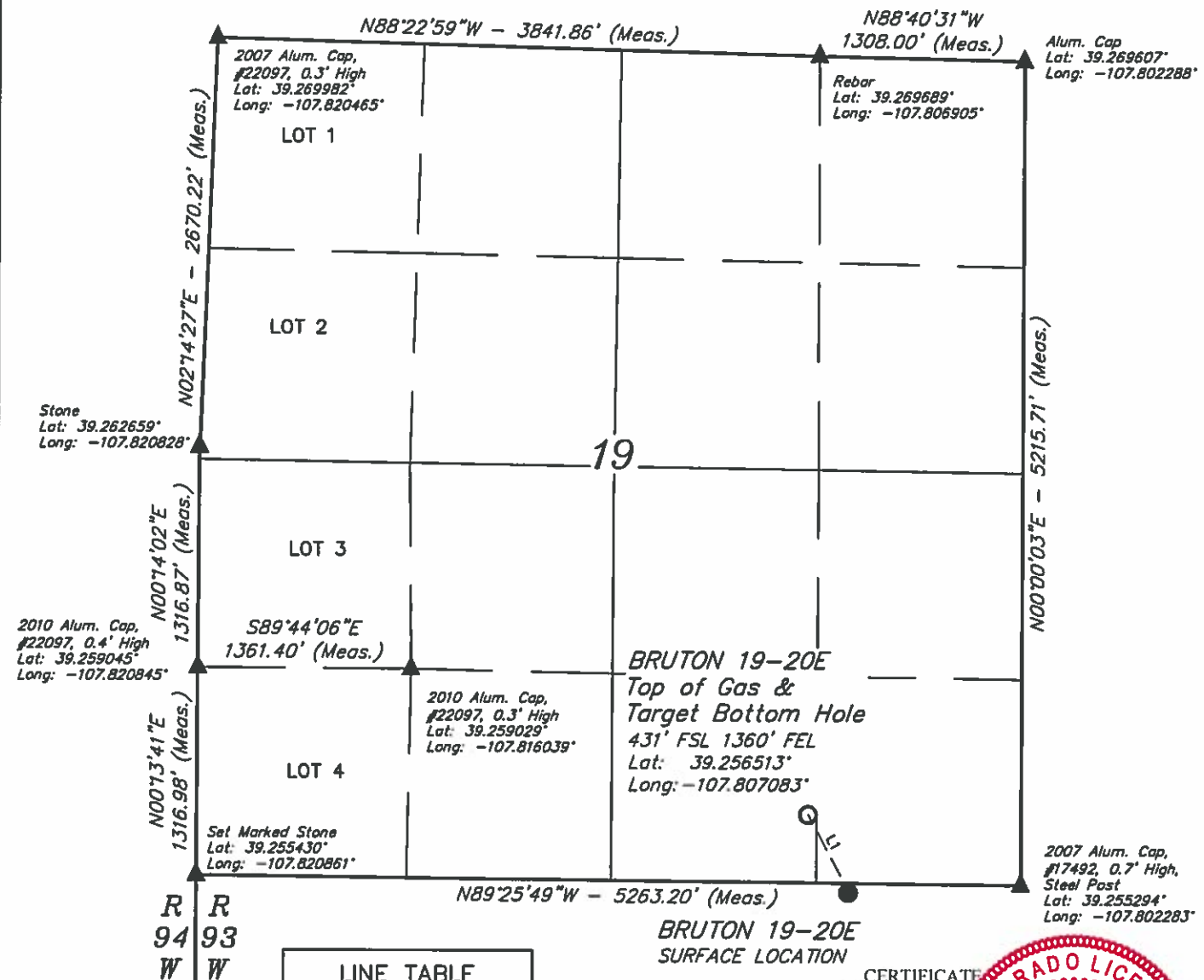
**UELS, LLC**  
Corporate Office \* 85 South 200 East  
Vernal, UT 84078 \* (435) 789-1017



**LEGEND:**

- - PROPOSED WELLHEAD.
- - TOP OF GAS & TARGET BOTTOM HOLE.
- ▲ - SECTION CORNERS LOCATED.

**T9S, R93W, 6th P.M.**

**NOTE:**

- 1.) All latitudes and longitudes are given in NAD 83 coordinates.
- 2.) Distances to nearest section lines are measured perpendicularly.



**BASIS OF BEARINGS**  
BASIS OF BEARINGS IS A GPS OBSERVATION

**BASIS OF ELEVATION**  
BENCH MARK (19 RDS) LOCATED IN THE SE 1/4 OF SECTION 16, T9S, R93W, 6th P.M. TAKEN FROM THE SOUTH MAMMI PEAK, QUADRANGLE, COLORADO, 7.5 MINUTE QUAD (TOPOGRAPHIC MAP) PUBLISHED BY THE UNITED STATES DEPARTMENT OF THE INTERIOR, GEOLOGICAL SURVEY SAID ELEVATION IS MARKED AS BEING 7252 FEET



**UELS, LLC**  
Corporate Office \* 85 South 200 East  
Vernal, UT 84078 \* (435) 789-1017

**LARAMIE ENERGY, LLC**

**BRUTON 19-20E (TOP OF GAS & TARGET BOTTOM HOLE)**  
SW 1/4 SE 1/4, SECTION 19, T9S, R93W, 6th P.M.  
MESA COUNTY, COLORADO

SURVEYED BY: BRADEN BOX, B.B.	DATE: 03-27-15
DRAWN BY: M.D.	DATE DRAWN: 05-29-15
SCALE: 1" = 1000'	

**WELL LOCATION PLAT**