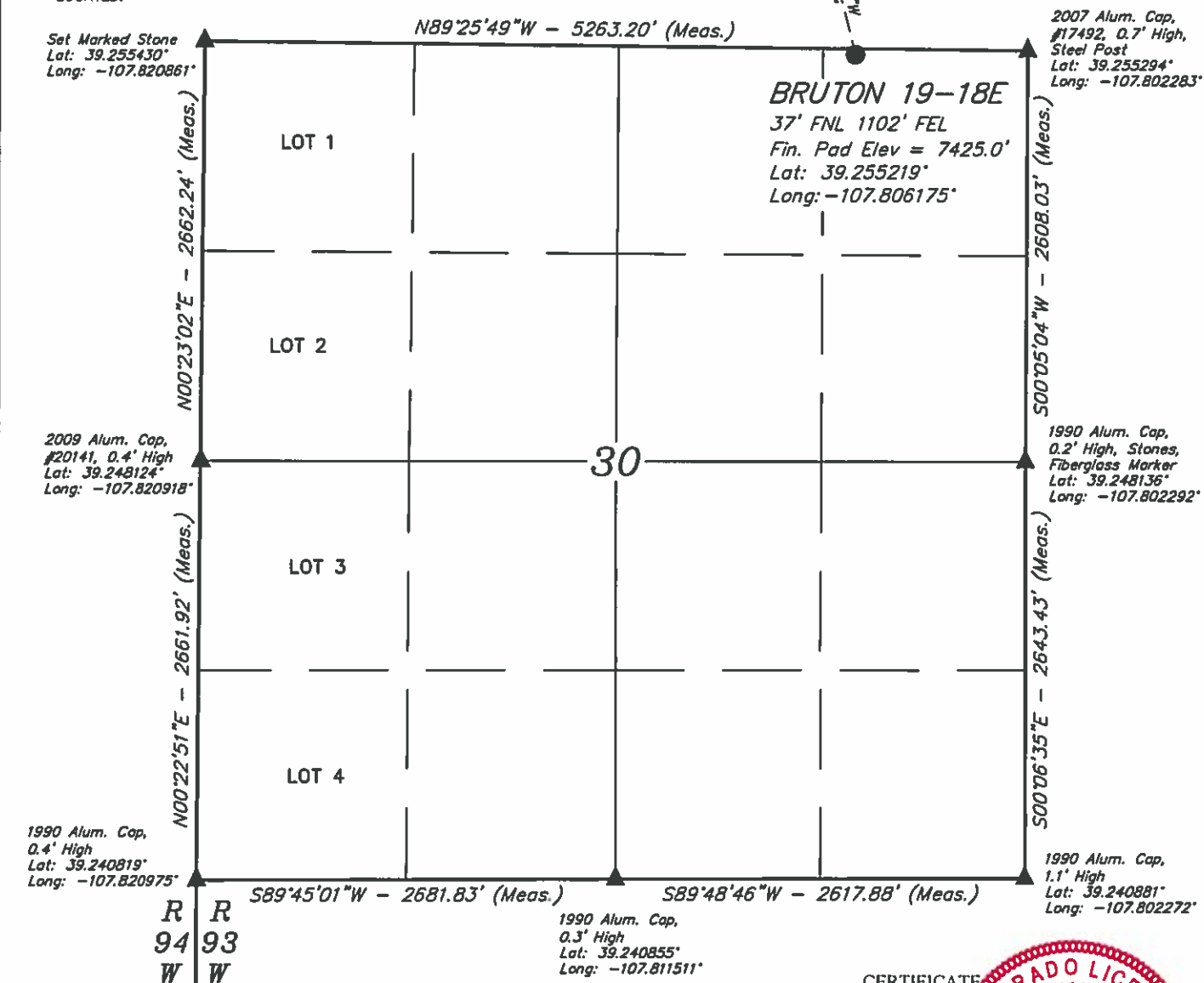


**LEGEND:**

- = PROPOSED WELLHEAD.
- = TOP OF GAS & TARGET BOTTOM HOLE.
- ▲ = SECTION CORNERS LOCATED.

**T9S, R93W, 6th P.M.**

○ Top of Gas &amp; Target Bottom Hole

**NOTE DISTANCE TO NEAREST:**

BUILDING: N31°W 4053'  
BUILDING UNIT: N31°W 4184'  
HOB: OVER A MILE  
DOAA: OVER A MILE  
PUBLIC ROAD: N09°E 4979'  
ABOVE GROUND UTILITY: N08°E 2033'  
RAILROAD: OVER A MILE  
PROPERTY LINE: N89°E 1103'

PDOP = 1.4

**NOTE:**

- 1.) All latitudes and longitudes are given in NAD 83 coordinates.
- 2.) Distances to nearest section lines are measured perpendicularly.



**CERTIFICATE**

THIS IS TO CERTIFY THAT THE ABOVE PLAT WAS PREPARED IN ACCORDANCE WITH THE NOTES OF ACTUAL SURVEYS MADE BY ME OR UNDER MY SUPERVISION AND THAT THE LOCATION HAS BEEN STAKED ON THE GROUND AS SHOWN ON THE PLAT AND THAT THE SAME ARE TRUE AND CORRECT TO THE BEST OF MY KNOWLEDGE AND BELIEF

REGISTERED SURVEYOR  
REGISTRATION NO. 100170  
STATE OF COLORADO 12-30-16

**BASIS OF BEARINGS**  
BASIS OF BEARINGS IS A GPS OBSERVATION

**BASIS OF ELEVATION**  
BENCH MARK (19 RDS) LOCATED IN THE SE 1/4 OF SECTION 16, T9S, R93W, 6th P.M., TAKEN FROM THE SOUTH MAMM PEAK, QUADRANGLE, COLORADO, 7.5 MINUTE QUAD (TOPOGRAPHIC MAP) PUBLISHED BY THE UNITED STATES DEPARTMENT OF THE INTERIOR, GEOLOGICAL SURVEY SAID ELEVATION IS MARKED AS BEING 7252 FEET



**UELS, LLC**  
Corporate Office \* 85 South 200 East  
Vernal, UT 84078 \* (435) 789-1017

**LARAMIE ENERGY, LLC**

**BRUTON 19-18E (SURFACE LOCATION)**  
NE 1/4 NE 1/4, SECTION 30, T9S, R93W, 6th P.M.  
MESA COUNTY, COLORADO

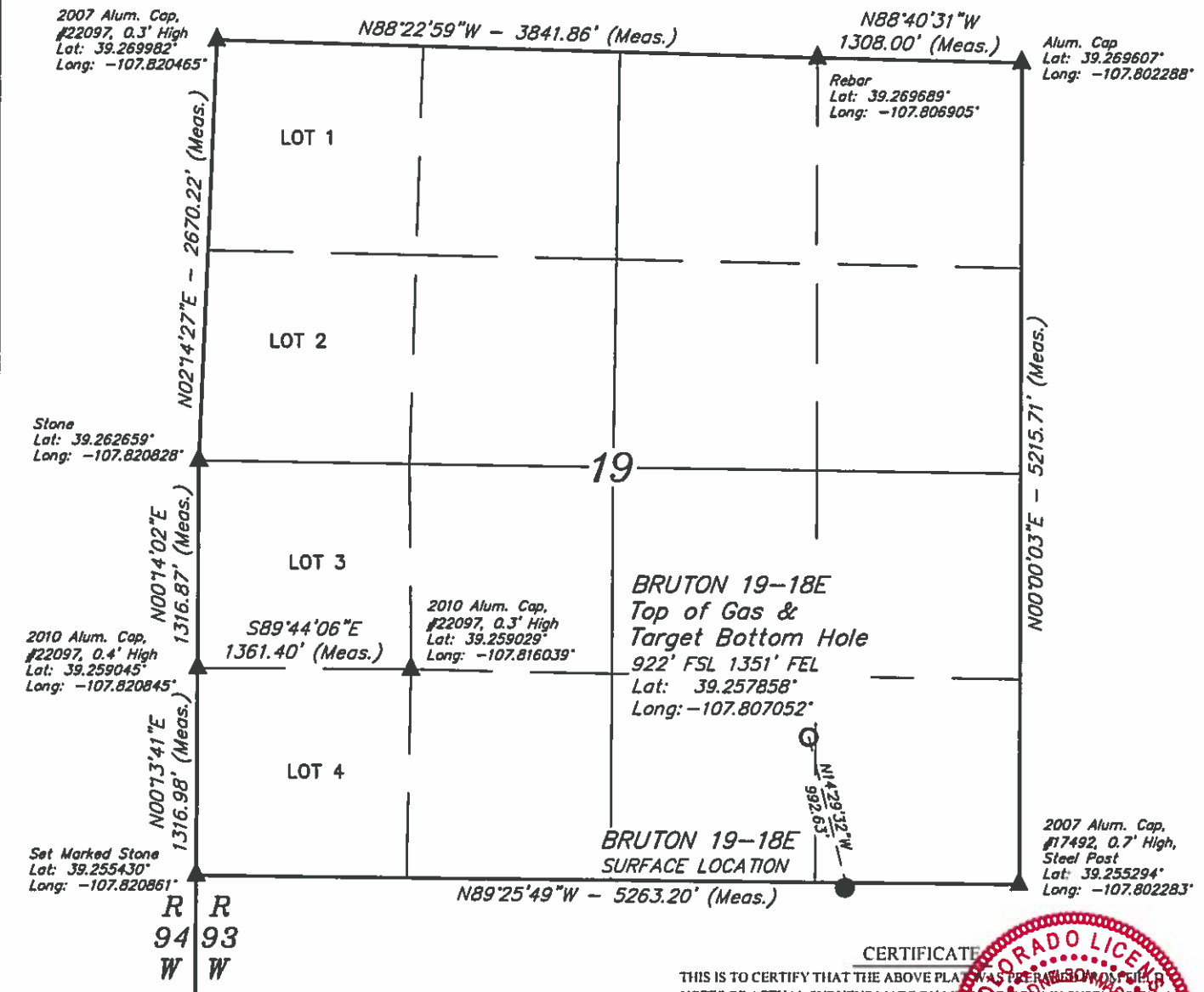
SURVEYED BY: BRADEN BOX, B.B. DATE: 03-27-15  
DRAWN BY: M.D. DATE DRAWN: 05-05-15  
SCALE: 1" = 1000'

**WELL LOCATION PLAT**

**LEGEND:**

- = PROPOSED WELLHEAD.
- = TOP OF GAS & TARGET BOTTOM HOLE.
- ▲ = SECTION CORNERS LOCATED.

*T9S, R93W, 6th P.M.*

**NOTE:**

- 1.) All latitudes and longitudes are given in NAD 83 coordinates.
- 2.) Distances to nearest section lines are measured perpendicularly.



CERTIFICATE  
THIS IS TO CERTIFY THAT THE ABOVE PLAT WAS PREPARED FROM FIELD NOTES OF ACTUAL SURVEYS MADE BY ME OR UNDER MY SUPERVISION AND THAT THE LOCATION HAS BEEN STAKED ON THE GROUND AS SHOWN ON THE PLAT AND THAT THE SAME ARE TRUE AND CORRECT TO THE BEST OF MY KNOWLEDGE AND BELIEF

REGISTERED LAND SURVEYOR  
REGISTRATION NO. 10010  
STATE OF COLORADO 1980-16

REV: 02 12-22-16 S.S. (SHL & BHL CHANGE)

**BASIS OF BEARINGS**  
BASIS OF BEARINGS IS A GPS OBSERVATION

**BASIS OF ELEVATION**  
BENCH MARK (19 RDS) LOCATED IN THE SE 1/4 OF SECTION 16, T9S, R93W, 6th P.M., TAKEN FROM THE SOUTH MAIN PEAK, QUADRANGLE, COLORADO, 7.5 MINUTE QUAD. (TOPOGRAPHIC MAP) PUBLISHED BY THE UNITED STATES DEPARTMENT OF THE INTERIOR, GEOLOGICAL SURVEY. SAID ELEVATION IS MARKED AS BEING 7252 FEET



**UELS, LLC**  
Corporate Office \* 85 South 200 East  
Vernal, UT 84078 \* (435) 789-1017



**LARAMIE ENERGY, LLC**

**BRUTON 19-18E (TOP OF GAS & TARGET BOTTOM HOLE)**  
SW 1/4 SE 1/4, SECTION 19, T9S, R93W, 6th P.M.  
MESA COUNTY, COLORADO

SURVEYED BY: BRADEN BOX, B.B.	DATE: 03-27-15
DRAWN BY: M.D.	DATE DRAWN: 05-29-15
SCALE: 1" = 1000'	

**WELL LOCATION PLAT**