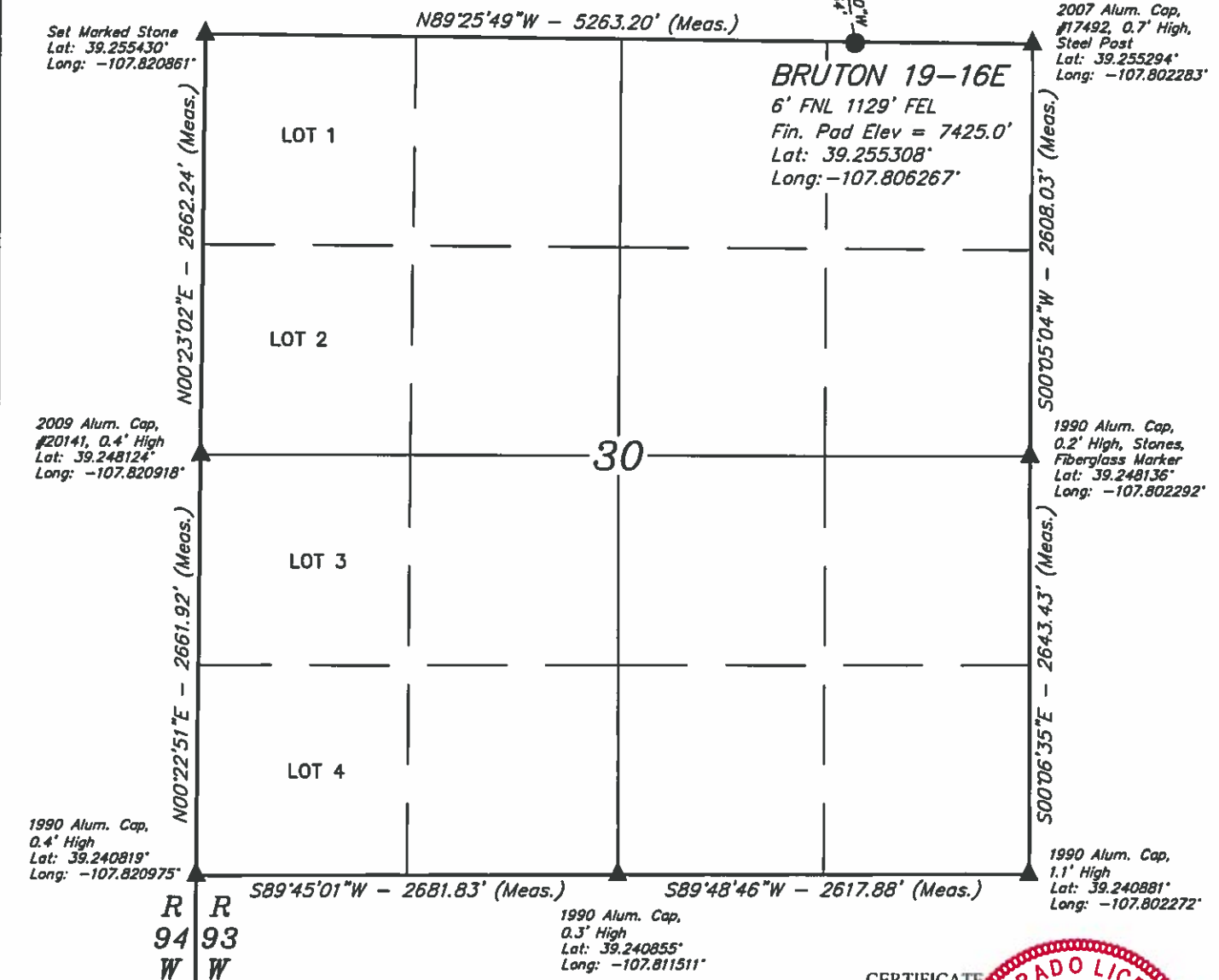


**LEGEND:**

- = PROPOSED WELLHEAD.  
 ○ = TOP OF GAS & TARGET BOTTOM HOLE.  
 ▲ = SECTION CORNERS LOCATED.

**T9S, R93W, 6th P.M.**

○ Top of Gas &  
 ↘ Target Bottom Hole



NOTE DISTANCE TO NEAREST:  
 BUILDING: N30°W 4013'  
 BUILDING UNIT: N31°W 4144'  
 HOB: OVER A MILE  
 DOAA: OVER A MILE  
 PUBLIC ROAD: N10°E 4952'  
 ABOVE GROUND UTILITY: N08°E 2005'  
 RAILROAD: OVER A MILE  
 PROPERTY LINE: EAST 1129'

**NOTE:**

- 1.) All latitudes and longitudes are given in NAD 83 coordinates.
- 2.) Distances to nearest section lines are measured perpendicularly.

CERTIFICATE  
 THIS IS TO CERTIFY THAT THE ABOVE PLAT WAS PREPARED BY ME FROM NOTES OF ACTUAL SURVEYS MADE BY ME OR UNDER MY SUPERVISION AND THAT THE LOCATION HAS BEEN STAKED ON THE GROUND AS SHOWN ON THE PLAT AND THAT THE SAME ARE TRUE AND CORRECT TO THE BEST OF MY KNOWLEDGE AND BELIEF

REGISTERED LAND SURVEYOR  
 REGISTRATION NO. 10011  
 STATE OF COLORADO

PDOP = 1.4



**BASIS OF BEARINGS**  
 BASIS OF BEARINGS IS A GPS OBSERVATION  
**BASIS OF ELEVATION**

BENCH MARK (19 RDS) LOCATED IN THE SE 1/4 OF SECTION 16, T9S, R93W, 6th P.M., TAKEN FROM THE SOUTH MIAMI PEAK, QUADRANGLE, COLORADO, 7.5 MINUTE QUAD (TOPOGRAPHIC MAP) PUBLISHED BY THE UNITED STATES DEPARTMENT OF THE INTERIOR, GEOLOGICAL SURVEY. SAID ELEVATION IS MARKED AS BEING 7252 FEET

**LARAMIE ENERGY, LLC**

**BRUTON 19-16E (SURFACE LOCATION)**  
 NE 1/4 NE 1/4, SECTION 30, T9S, R93W, 6th P.M.  
 MESA COUNTY, COLORADO

SURVEYED BY: BRADEN BOX, B.B. DATE: 03-27-15  
 DRAWN BY: M.D. DATE DRAWN: 05-29-15  
 SCALE: 1" = 1000'

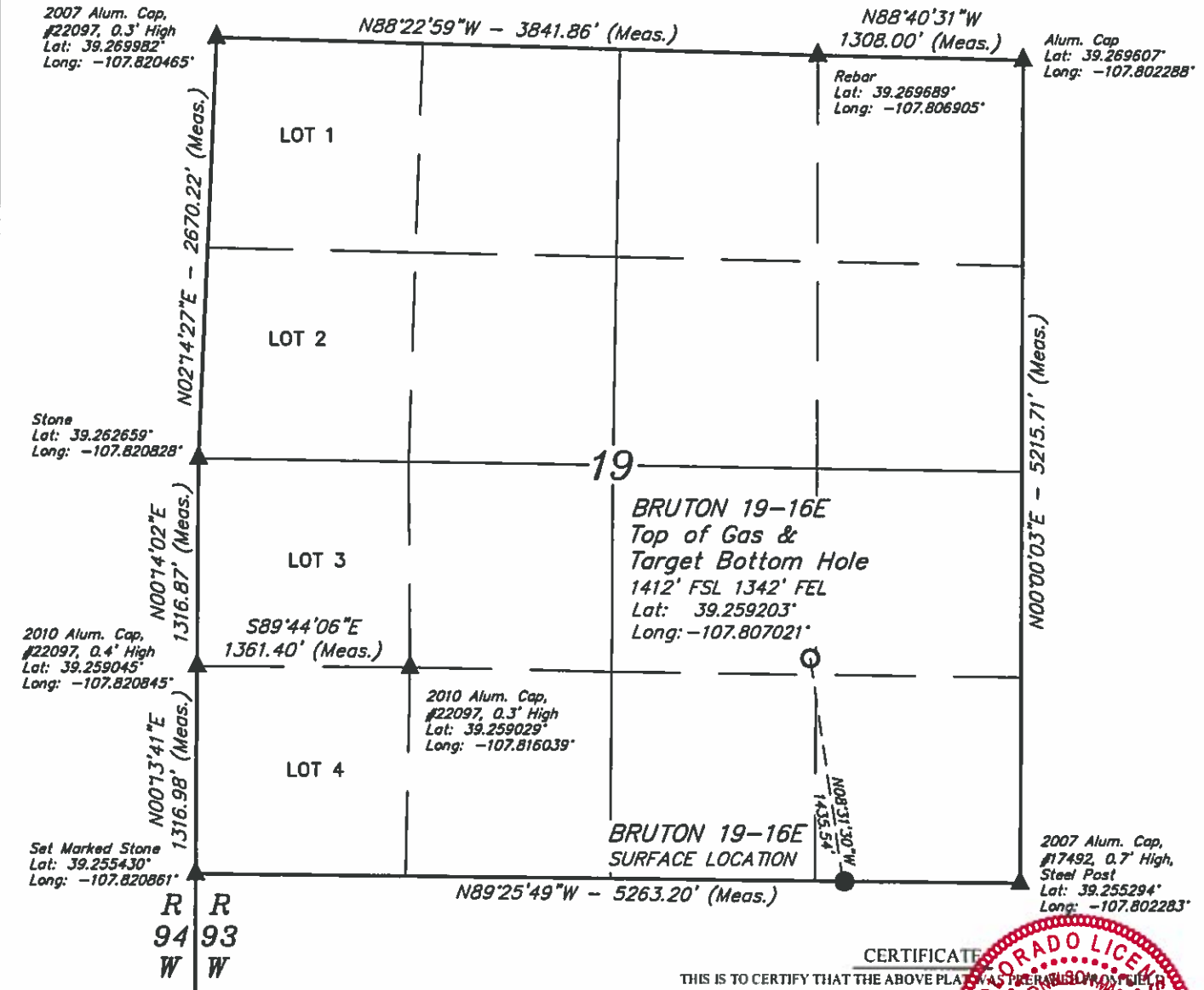
**WELL LOCATION PLAT**

**UELS, LLC**  
 Corporate Office \* 85 South 200 East  
 Vernal, UT 84078 \* (435) 789-1017

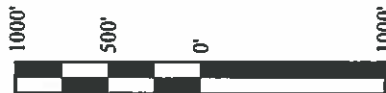
**LEGEND:**

- = PROPOSED WELLHEAD.
- = TOP OF GAS & TARGET BOTTOM HOLE.
- ▲ = SECTION CORNERS LOCATED.

T9S, R93W, 6th P.M.

**NOTE:**

- 1.) All latitudes and longitudes are given in NAD 83 coordinates.
- 2.) Distances to nearest section lines are measured perpendicularly.



**CERTIFICATE**

THIS IS TO CERTIFY THAT THE ABOVE PLAT WAS PREPARED FROM THE NOTES OF ACTUAL SURVEYS MADE BY ME OR UNDER MY SUPERVISION AND THAT THE LOCATION HAS BEEN STAKED ON THE GROUND AS SHOWN ON THE PLAT AND THAT THE SAME ARE TRUE AND CORRECT TO THE BEST OF MY KNOWLEDGE AND BELIEF

REGISTERED LAND SURVEYOR  
REGISTRATION NO. 10  
STATE OF COLORADO

REV: 03 01-09-17 S.S. (SHL CHANGE)

**BASIS OF BEARINGS**  
BASIS OF BEARINGS IS A GPS OBSERVATION

**BASIS OF ELEVATION**

BENCH MARK (19 RDS) LOCATED IN THE SE 1/4 OF SECTION 16, T9S, R93W, 6th P.M. TAKEN FROM THE SOUTH MAMM PEAK, QUADRANGLE, COLORADO, 7 1/2 MINUTE QUAD (TOPOGRAPHIC MAP) PUBLISHED BY THE UNITED STATES DEPARTMENT OF THE INTERIOR, GEOLOGICAL SURVEY. SAID ELEVATION IS MARKED AS BEING 7252 FEET

**LARAMIE ENERGY, LLC****BRUTON 19-16E (TOP OF GAS & TARGET BOTTOM HOLE)**

NW 1/4 SE 1/4, SECTION 19, T9S, R93W, 6th P.M. MESA COUNTY, COLORADO

SURVEYED BY: BRADEN BOX, B.B.

DATE: 03-27-15

DRAWN BY: M.D.

DATE DRAWN: 05-29-15

SCALE: 1" = 1000'

**WELL LOCATION PLAT**

**UELS, LLC**  
Corporate Office \* 85 South 200 East  
Vernal, UT 84078 \* (435) 789-1017