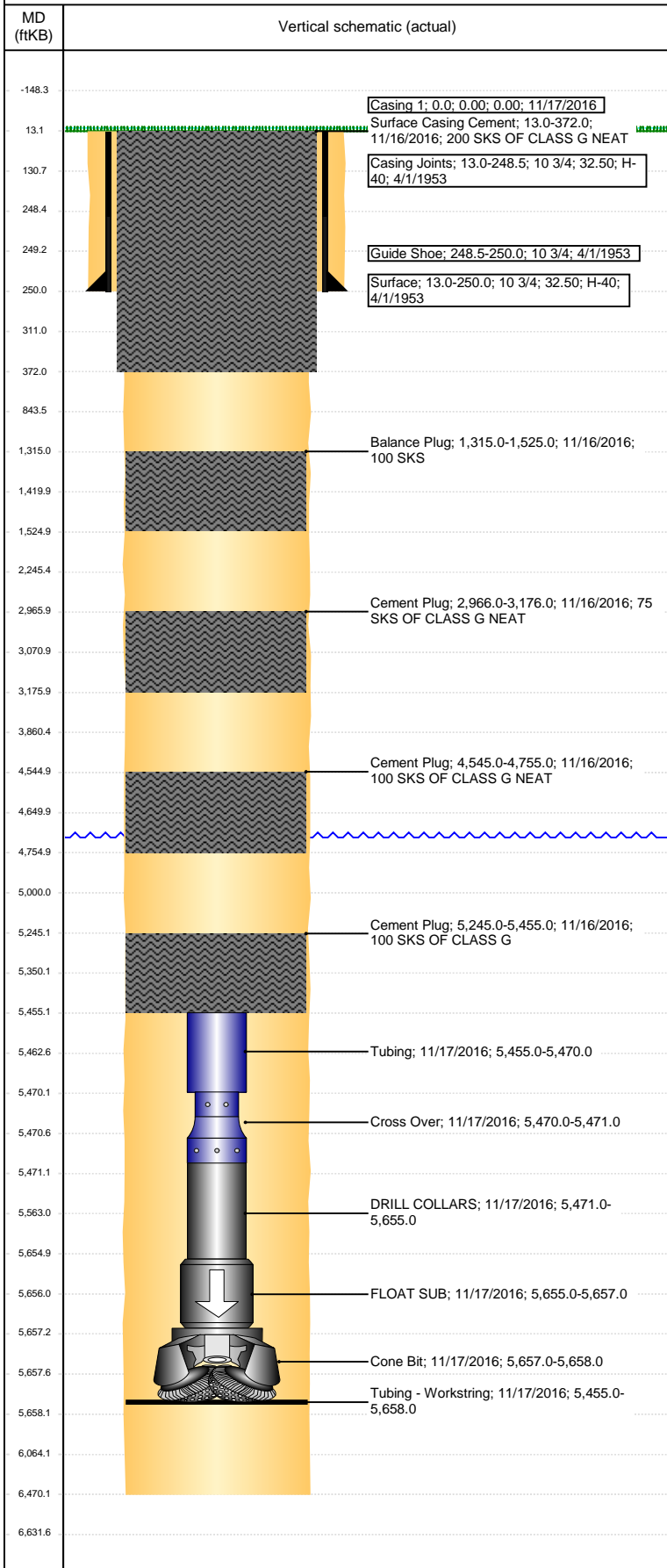


Wellbore Schematic Input Report

Well Name: LINDAHL 1

VERTICAL - ORIGINAL HOLE, 12/12/2016 3:19:01 PM



Well Header						
API 05-123-05621	Business Unit DJ BASIN		District 15		Well Config VERTICAL	
Original KB Elevation (ft) 4,717	KB - GL / MSL (ftKB) 13.00		Spud Date 4/1/1953		P & A Date 4/15/1953	
Comment NO SURFACE HOLE WIDTH GIVEN, USED 12 1/4"						
PROPOSED PLUGS						
Directions To Well HWY 14/CR129 N 8.9 MILES E ON CR102 .5 S INTO						
Congressional Location						
Quarter 3	Quarter 4	Section 27	Township 9	TwNSP Dir N	Range 58	Range E/W Dir W
Bottom Hole Location						
North-South Distance (ft)		From N or S Line		East-West Distance (ft)		From E or W Line
Plug Back Total Depths						
Date	Depth (ftKB)	Method		Com		
11/15/2016	5,658.0	TAG				
Wellbore Sections						
Section Des		Size (in)		Act Top, MD (ftKB)		Act Btm, MD (ftKB)
SURFACE		12 1/4		13		250
PRODUCTION		8 3/4		250		6,470
Zone Statuses						
Zone Name	Status Date	Status	Fluid Type	Job	Prod Method	
Casing Strings						
<des>, <depth>ftKB						
Casing Description		Run Date 11/17/2016	OD (in)	Wt/Len (l...	Grade	Top, MD (ft...) MD (ftKB)
Surface, 250.0ftKB						
Casing Description Surface		Run Date 4/1/1953	OD (in) 10 3/4	Wt/Len (l...) 32.50	Grade H-40	Top, MD (ft...) 13.0 MD (ftKB) 250.0
Cement						
Description Surface Casing Cement				Top Depth (ftKB) 13.0		Bottom Depth (ftKB) 372.0
Description Cement Plug				Top Depth (ftKB) 5,245.0		Bottom Depth (ftKB) 5,455.0
Description Cement Plug				Top Depth (ftKB) 4,545.0		Bottom Depth (ftKB) 4,755.0
Description Cement Plug				Top Depth (ftKB) 2,966.0		Bottom Depth (ftKB) 3,176.0
Description Balance Plug				Top Depth (ftKB) 1,315.0		Bottom Depth (ftKB) 1,525.0
Tubing Strings						
Tubing Description Tubing - Workstring		Run Date 11/17/2016	String... 2 7/8	ID (in)	Wt (lb/ft)	Grade Len (ft) 203.0 Set De...
Tubing Components						
Item Des		OD (in)	Wt (lb/ft)	Grade	Jts	Len (ft) Btm (ftKB) Btm (TVD) (ftKB)
Tubing		2 7/8	6.50	N-80	1	15.00 5,470.0
Cross Over		2 7/8			1	1.00 5,471.0
DRILL COLLARS		2 7/8			6	184.00 5,655.0
FLOAT SUB		3 1/2			1	2.00 5,657.0
Cone Bit		6 1/8			1	1.00 5,658.0
Other In Hole						
Run Date		Des			OD (in)	Top (ftKB) Btm (ftKB)
11/17/2016						
Logs						
Date		Type			Top, MD (ftKB) Btm, MD (ftKB)	
Perforation Data						
Linked Zone		Bnch/St g	Entered Shot Total	Top (ftKB)	Btm (ftKB)	Date