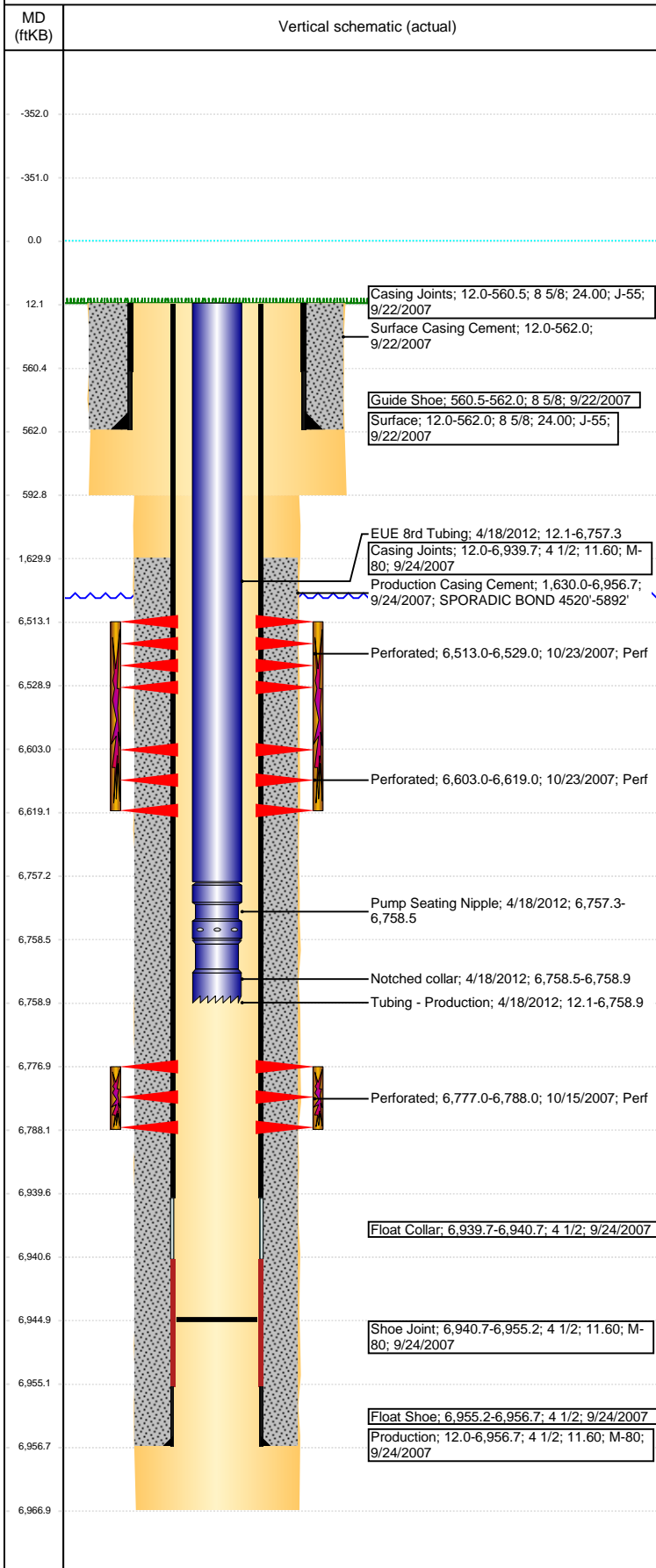


Well Name: WELLS RANCH USX BB03-04

VERTICAL - ORIGINAL HOLE, 1/23/2017 10:49:47 AM



Well Header

API 05-123-26318	Business Unit DJ BASIN	District 15	Well Config VERTICAL
Original KB Elevation (ft) 4,792	KB - GL / MSL (ftKB) 12.00	Spud Date 9/21/2007	P & A Date
Comment			

Directions To Well

WCR 67 & WCR 68, E 0.2, S TO COW CAMP, SW 0.5, S 0.1 INTO LOCATION

Congressional Location

Quarter 3 NW	Quarter 4 NW	Section 3	Township 5	Twnshp N/S Dir N	Range 63	Range E/W Dir W
-----------------	-----------------	--------------	---------------	---------------------	-------------	--------------------

Bottom Hole Location

North-South Distance (ft)	From N or S Line	East-West Distance (ft)	From E or W Line
---------------------------	------------------	-------------------------	------------------

Plug Back Total Depths

Date	Depth (ftKB)	Method	Com
9/24/2007	6,939.7	CASING TALLY	TOP OF FLOAT COLLAR
10/8/2007	6,920.0	CASED HOLE LOG	DEPTH LOGGER ON CBL
1/31/2008	6,921.0	TAG	DRILLED CIFTF AND PUSHED DOWN TO 6921'
4/17/2012	6,945.0	TAG	C/O DN 223JT ALL IN

Wellbore Sections

Section Des	Size (in)	Act Top, MD (ftKB)	Act Btm, MD (ftKB)
SURFACE	12 1/4	12	593
PRODUCTION	7 7/8	593	6,967

Zone Statuses

Zone Name	Status Date	Status	Fluid Type	Job	Prod Method
CODELL	10/25/2007	PR	Water	DRILLING/CO...	Flowing
CODELL	2/11/2010	PR			
CODELL	2/14/2013	PR			
NIOBRARA	10/25/2007	PR	Water	DRILLING/CO...	Flowing
NIOBRARA	2/11/2010	PR			

Casing Strings

Surface, 562.0ftKB

Casing Description	Run Date	OD (in)	Wt/Len (l...)	Grade	Top, MD (ft...)	MD (ftKB)
Surface	9/22/2007	8 5/8	24.00	J-55	12.0	562.0

Production, 6,956.7ftKB

Casing Description	Run Date	OD (in)	Wt/Len (l...)	Grade	Top, MD (ft...)	MD (ftKB)
Production	9/24/2007	4 1/2	11.60	M-80	12.0	6,956.7

Cement

Description	Top Depth (ftKB)	Bottom Depth (ftKB)
Surface Casing Cement	12.0	562.0
Production Casing Cement	1,630.0	6,956.7

Tubing Strings

Tubing Description	Run Date	String...	ID (in)	Wt (lb/ft)	Grade	Len (ft)	Set De...
Tubing - Production	1/31/2008	2 3/8	2.00	4.70	J-55	6,753.59	
Tubing - Production	4/18/2012	2 3/8	2.00	4.70	J-55	6,746.89	

Tubing Components

Item Des	OD (in)	Wt (lb/ft)	Grade	Jts	Len (ft)	Btm (ftKB)	Btm (TVD) (ftKB)
EUE 8rd Tubing	2 3/8	4.70	J-55	217	6,745.29	6,757.3	
Pump Seating Nipple	2 3/8	1.10	N-80	1	1.20	6,758.5	
Notched collar	2 3/8	4.70	J-55	1	0.40	6,758.9	

Other In Hole

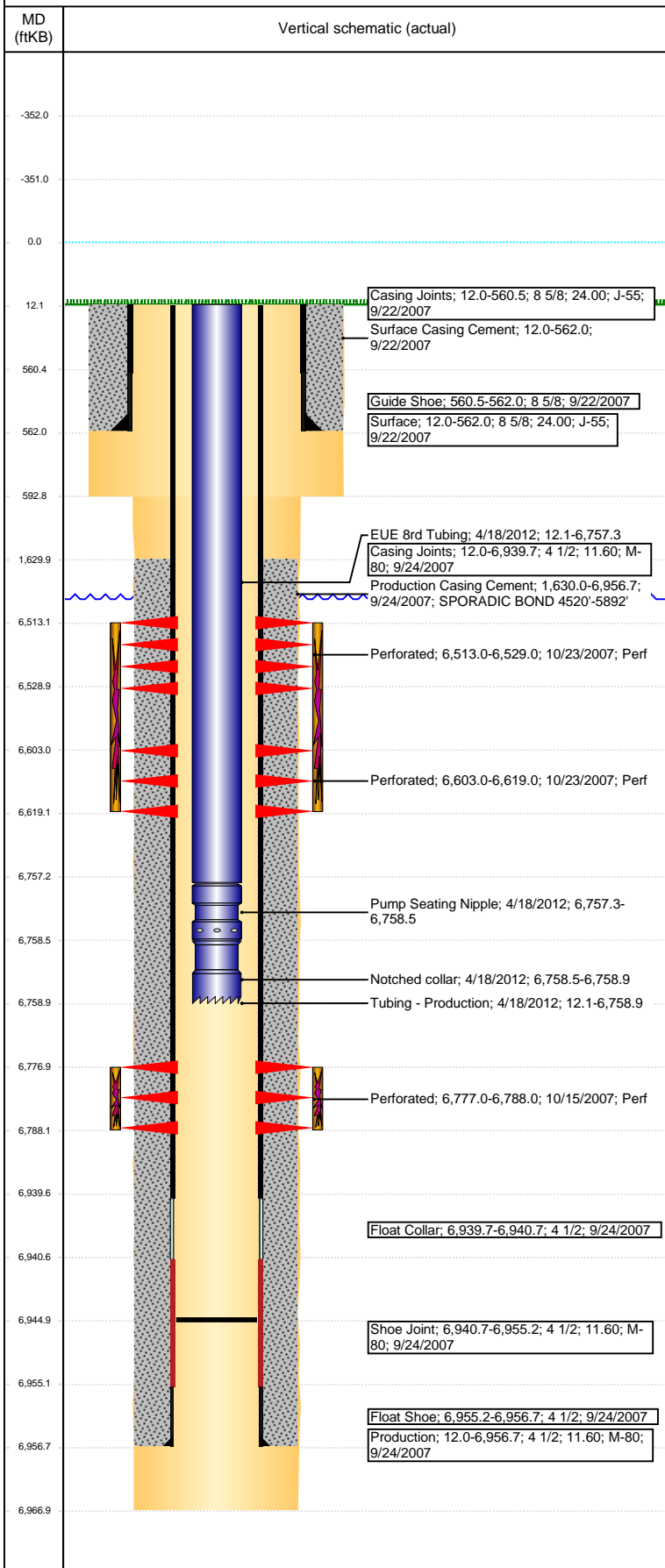
Run Date	Des	OD (in)	Top (ftKB)	Btm (ftKB)

Logs

Date	Type	Top, MD (ftKB)	Btm, MD (ftKB)
9/24/2007	COMPENSATED DENSITY	2,590.0	6,947.0
9/24/2007	INDUCTION	562.0	6,967.0
10/8/2007	CBL/CCL/GR	1,520.0	6,713.0
5/8/2015	GYRO	10.0	6,700.0

Well Name: WELLS RANCH USX BB03-04

VERTICAL - ORIGINAL HOLE, 1/23/2017 10:49:50 AM



Perforation Data					
Linked Zone	Brnch/St g	Sum of Entered Shot Total	Top (ftKB)	Btm (ftKB)	Date
NIOBRARA, ORIGINAL HOLE	A	64	6,513.00	6,529.00	10/23/2007
NIOBRARA, ORIGINAL HOLE	B	64	6,603.00	6,619.00	10/23/2007
CODELL, ORIGINAL HOLE		44	6,777.00	6,788.00	10/15/2007
Total (Sum)		172			

Stimulation Intervals		
Start Date 10/23/2007	Primary Job Type DRILLING/COMPLETION - ORIGINAL	
Technical Result	Tech Result Details	Tech Result Note
Comment		
Start Date 10/23/2007	Primary Job Type DRILLING/COMPLETION - ORIGINAL	
Technical Result	Tech Result Details	Tech Result Note
Comment		