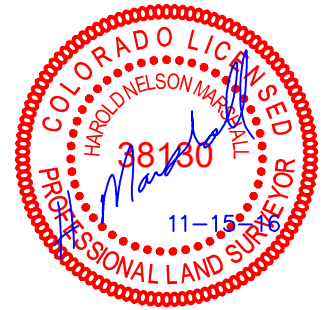




LINE TABLE		
LINE	DIRECTION	LENGTH
L1	S56°55'47"E	2337.37'
L2	S61°00'17"E	2239.13'
L3	S65°11'14"E	2157.38'
L4	S69°55'52"E	2084.54'
L5	S74°42'30"E	2029.59'
L6	S79°59'52"E	1987.67'
L7	S85°11'10"E	1964.13'
L8	N89°15'43"E	1957.11'

LINE TABLE		
LINE	DIRECTION	LENGTH
L9	N84°00'42"E	1967.43'
L10	N78°34'38"E	1995.98'
L11	N73°36'39"E	2039.04'
L12	N68°37'45"E	2100.36'
L13	N41°58'52"W	1009.41'
L14	N50°18'06"W	877.22'
L15	N60°35'37"W	774.50'
L16	N74°14'56"W	700.80'

LINE TABLE		
LINE	DIRECTION	LENGTH
L17	N89°09'51"W	674.33'
L18	S75°01'54"W	697.70'
L19	S61°51'31"W	763.80'
L20	S50°44'24"W	869.55'
L21	S42°39'45"W	993.15'
L22	S36°10'04"W	1140.06'
L23	S31°26'01"W	1289.67'
L24	S27°31'13"W	1455.10'



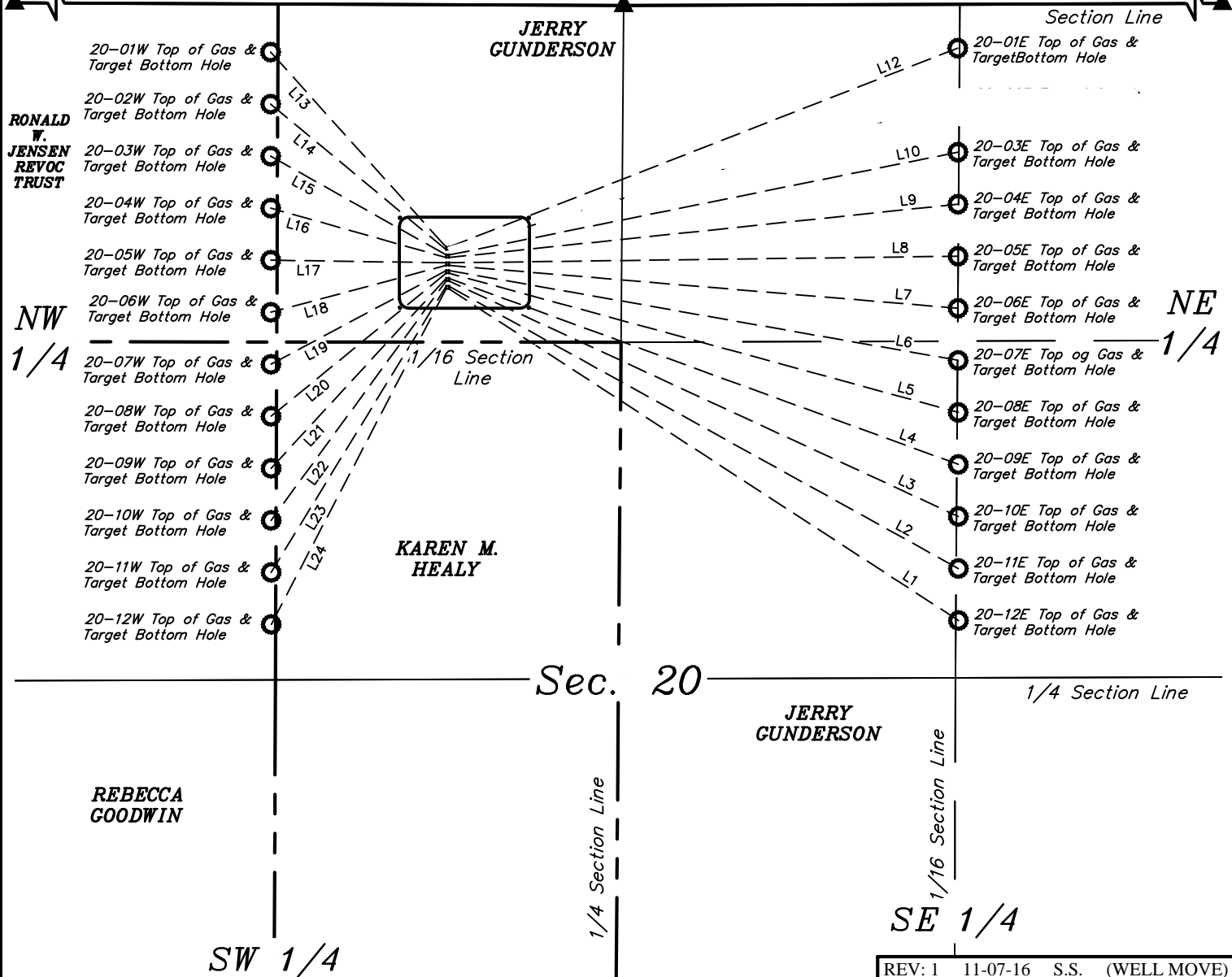
NW Cor. Sec. 20,  
2007 Alum. Cap  
#17492

1997 Alum. Cap  
#12093, 0.4' High

NE Cor. Sec. 20,  
Set Marked Stone,  
Steel Post

N89°46'04"W - 2657.08' (Meas.)

S89°48'48"W - 2583.18' (Meas.)



NOTES:

LARAMIE ENERGY, LLC

GUNDERSON 20-03 PAD  
NE 1/4 NW 1/4, SECTION 20, T9S, R93W, 6th P.M.  
MESA COUNTY, COLORADO



UELS, LLC  
Corporate Office \* 85 South 200 East  
Vernal, UT 84078 \* (435) 789-1017

DRAWN BY: S.S.	DATE DRAWN: 10-20-16
SCALE: 1" = 600'	
<b>MULTI-WELL PLAN</b>	<b>FIGURE #7</b>