

BILL BARRETT CORP

WELD COUNTY, COLORADO

CVR 5-63-32_33 Pad

CVR 5-63-32-4956B2

Wellbore #1

Plan: Design #1

Standard Planning Report

28 June, 2016



Bill Barrett Corporation

COMPANY DETAILS: BILL BARRETT CORP

Calculation Method: Minimum Curvature
Error System: ISCWSA
Scan Method: Closest Approach 3D
Error Surface: Elliptical Conic
Warning Method: Error Ratio

REFERENCE INFORMATION

Co-ordinate (N/E) Reference: Well CVR 5-63-32-4956B2, True North
Vertical (TVD) Reference: KB @ 4597.0ft (Original Well Elev)
Section (VS) Reference: Slot - (0.0N, 0.0E)
Measured Depth Reference: KB @ 4597.0ft (Original Well Elev)
Calculation Method: Minimum Curvature

WELL DETAILS: CVR 5-63-32-4956B2

+N/-S	+E/-W	Northing	Easting	Latitude	Longitude
0.0	0.0	1372972.47	3287444.56	40° 21' 9.439 N	104° 28' 7.028 W

WELLS TARGET DETAILS

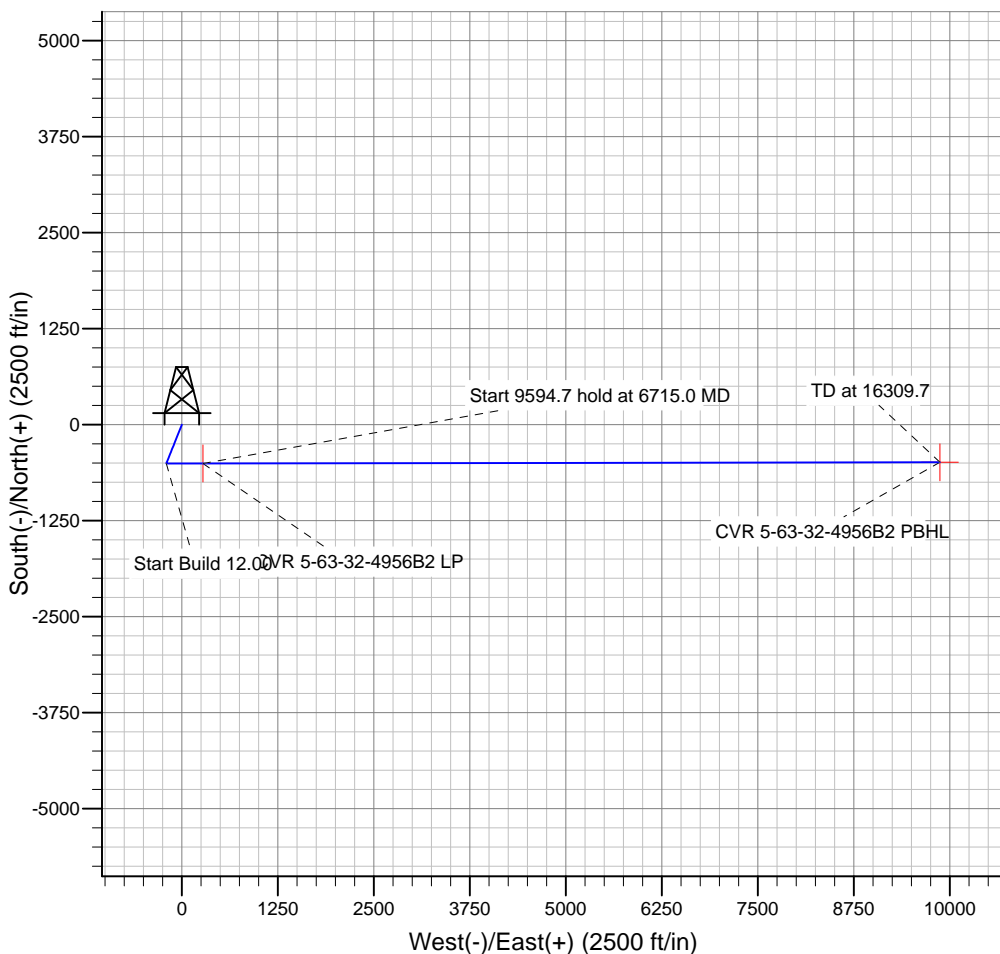
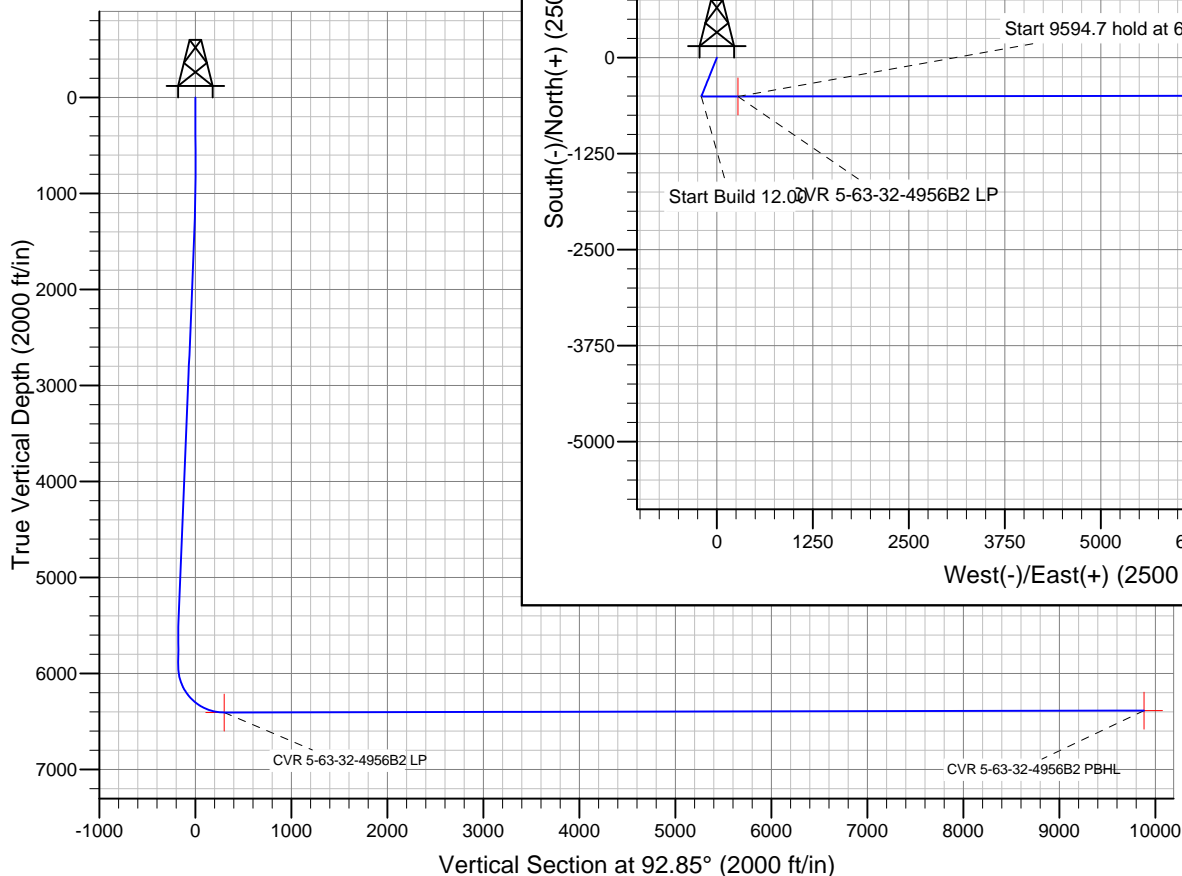
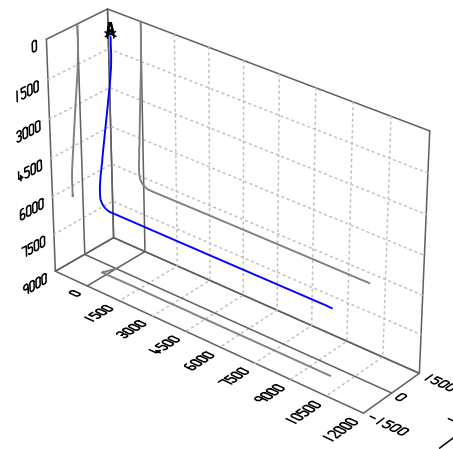
Name	TVD	+N/-S	+E/-W	Shape
CVR 5-63-32-4956B2 PBHL	6388.0	-491.6	9870.0	Point
CVR 5-63-32-4956B2 LP	6408.0	-506.7	275.4	Point

PROJECT DETAILS: WELD COUNTY, COLORADO

Geodetic System: US State Plane 1983
Datum: North American Datum 1983
Ellipsoid: GRS 1980
Zone: Colorado Northern Zone

SECTION DETAILS

Sec	MD	Inc	Azi	TVD	+N/-S	+E/-W	DLeg	TFace	VSec	Target
1	0.0	0.00	0.00	0.0	0.0	0.0	0.00	0.00	0.0	
2	1000.0	0.00	0.00	1000.0	0.0	0.0	0.00	0.00	0.0	
3	1360.6	7.21	201.81	1359.7	-21.0	-8.4	2.00	201.81	-7.4	
4	5353.4	7.21	201.81	5320.9	-486.4	-194.7	0.00	0.00	-170.2	
5	5714.0	0.00	89.91	5680.5	-507.5	-203.1	2.00	180.00	-177.6	
6	5964.0	0.00	89.91	5930.5	-507.5	-203.1	0.00	89.91	-177.6	
7	6715.0	90.12	89.91	6408.0	-506.7	275.4	12.00	89.91	300.2	CVR 5-63-32-4956B2 LP
8	16309.7	90.12	89.91	6388.0	-491.6	9870.0	0.00	0.00	9882.2	CVR 5-63-32-4956B2 PBHL



Azimuths to True North
Magnetic North: 8.22°

Magnetic Field
Strength: 52765.6snT
Dip Angle: 66.94°
Date: 12/31/2014
Model: IGRF2010

Bill Barrett Corp

Planning Report

Database:	Compass	Local Co-ordinate Reference:	Well CVR 5-63-32-4956B2
Company:	BILL BARRETT CORP	TVD Reference:	KB @ 4597.0ft (Original Well Elev)
Project:	WELD COUNTY, COLORADO	MD Reference:	KB @ 4597.0ft (Original Well Elev)
Site:	CVR 5-63-32_33 Pad	North Reference:	True
Well:	CVR 5-63-32-4956B2	Survey Calculation Method:	Minimum Curvature
Wellbore:	Wellbore #1		
Design:	Design #1		

Project	WELD COUNTY, COLORADO		
Map System:	US State Plane 1983	System Datum:	Mean Sea Level
Geo Datum:	North American Datum 1983		
Map Zone:	Colorado Northern Zone		

Site		CVR 5-63-32_33 Pad				
Site Position:		Northing:	1,373,018.00ft	Latitude:	40° 21' 9.889 N	
From:	Lat/Long	Easting:	3,287,443.19ft	Longitude:	104° 28' 7.039 W	
Position Uncertainty:		0.0 ft	Slot Radius:	"	Grid Convergence:	0.67 °

Well	CVR 5-63-32-4956B2					
Well Position	+N-S	-45.5 ft	Northing:	1,372,972.47 ft	Latitude:	40° 21' 9.439 N
	+E-W	0.8 ft	Easting:	3,287,444.56 ft	Longitude:	104° 28' 7.028 W
Position Uncertainty		0.0 ft	Wellhead Elevation:	ft	Ground Level:	4,581.0 ft

Wellbore	Wellbore #1				
Magnetics	Model Name	Sample Date	Declination (°)	Dip Angle (°)	Field Strength (nT)
	IGRF2010	12/31/2014	8.22	66.94	52,766

Design	Design #1				
Audit Notes:					
Version:	Phase:	PLAN	Tie On Depth:	0.0	
Vertical Section:	Depth From (TVD) (ft)	+N/-S (ft)	+E/-W (ft)	Direction (°)	
	0.0	0.0	0.0	92.85	

Plan Sections										
Measured Depth (ft)	Inclination (°)	Azimuth (°)	Vertical Depth (ft)	+N/-S (ft)	+E/-W (ft)	Dogleg Rate (°/100ft)	Build Rate (°/100ft)	Turn Rate (°/100ft)	TFO (°)	Target
0.0	0.00	0.00	0.0	0.0	0.0	0.00	0.00	0.00	0.00	
1,000.0	0.00	0.00	1,000.0	0.0	0.0	0.00	0.00	0.00	0.00	
1,360.6	7.21	201.81	1,359.7	-21.0	-8.4	2.00	2.00	0.00	201.81	
5,353.4	7.21	201.81	5,320.9	-486.4	-194.7	0.00	0.00	0.00	0.00	
5,714.0	0.00	89.91	5,680.5	-507.5	-203.1	2.00	-2.00	0.00	180.00	
5,964.0	0.00	89.91	5,930.5	-507.5	-203.1	0.00	0.00	0.00	89.91	
6,715.0	90.12	89.91	6,408.0	-506.7	275.4	12.00	12.00	0.00	89.91	CVR 5-63-32-4956B2
16,309.7	90.12	89.91	6,388.0	-491.6	9,870.0	0.00	0.00	0.00	0.00	CVR 5-63-32-4956B2

Bill Barrett Corp

Planning Report

Database:	Compass	Local Co-ordinate Reference:	Well CVR 5-63-32-4956B2
Company:	BILL BARRETT CORP	TVD Reference:	KB @ 4597.0ft (Original Well Elev)
Project:	WELD COUNTY, COLORADO	MD Reference:	KB @ 4597.0ft (Original Well Elev)
Site:	CVR 5-63-32_33 Pad	North Reference:	True
Well:	CVR 5-63-32-4956B2	Survey Calculation Method:	Minimum Curvature
Wellbore:	Wellbore #1		
Design:	Design #1		

Planned Survey									
Measured Depth (ft)	Inclination (°)	Azimuth (°)	Vertical Depth (ft)	+N/-S (ft)	+E/-W (ft)	Vertical Section (ft)	Dogleg Rate (°/100ft)	Build Rate (°/100ft)	Turn Rate (°/100ft)
0.0	0.00	0.00	0.0	0.0	0.0	0.0	0.00	0.00	0.00
100.0	0.00	0.00	100.0	0.0	0.0	0.0	0.00	0.00	0.00
200.0	0.00	0.00	200.0	0.0	0.0	0.0	0.00	0.00	0.00
300.0	0.00	0.00	300.0	0.0	0.0	0.0	0.00	0.00	0.00
400.0	0.00	0.00	400.0	0.0	0.0	0.0	0.00	0.00	0.00
500.0	0.00	0.00	500.0	0.0	0.0	0.0	0.00	0.00	0.00
600.0	0.00	0.00	600.0	0.0	0.0	0.0	0.00	0.00	0.00
700.0	0.00	0.00	700.0	0.0	0.0	0.0	0.00	0.00	0.00
800.0	0.00	0.00	800.0	0.0	0.0	0.0	0.00	0.00	0.00
900.0	0.00	0.00	900.0	0.0	0.0	0.0	0.00	0.00	0.00
1,000.0	0.00	0.00	1,000.0	0.0	0.0	0.0	0.00	0.00	0.00
1,100.0	2.00	201.81	1,100.0	-1.6	-0.6	-0.6	2.00	2.00	0.00
1,200.0	4.00	201.81	1,199.8	-6.5	-2.6	-2.3	2.00	2.00	0.00
1,300.0	6.00	201.81	1,299.5	-14.6	-5.8	-5.1	2.00	2.00	0.00
1,360.6	7.21	201.81	1,359.7	-21.0	-8.4	-7.4	2.00	2.00	0.00
1,400.0	7.21	201.81	1,398.7	-25.6	-10.3	-9.0	0.00	0.00	0.00
1,500.0	7.21	201.81	1,497.9	-37.3	-14.9	-13.1	0.00	0.00	0.00
1,600.0	7.21	201.81	1,597.2	-48.9	-19.6	-17.1	0.00	0.00	0.00
1,700.0	7.21	201.81	1,696.4	-60.6	-24.3	-21.2	0.00	0.00	0.00
1,800.0	7.21	201.81	1,795.6	-72.3	-28.9	-25.3	0.00	0.00	0.00
1,900.0	7.21	201.81	1,894.8	-83.9	-33.6	-29.4	0.00	0.00	0.00
2,000.0	7.21	201.81	1,994.0	-95.6	-38.2	-33.4	0.00	0.00	0.00
2,100.0	7.21	201.81	2,093.2	-107.2	-42.9	-37.5	0.00	0.00	0.00
2,200.0	7.21	201.81	2,192.4	-118.9	-47.6	-41.6	0.00	0.00	0.00
2,300.0	7.21	201.81	2,291.6	-130.5	-52.2	-45.7	0.00	0.00	0.00
2,400.0	7.21	201.81	2,390.8	-142.2	-56.9	-49.8	0.00	0.00	0.00
2,500.0	7.21	201.81	2,490.0	-153.8	-61.6	-53.8	0.00	0.00	0.00
2,600.0	7.21	201.81	2,589.2	-165.5	-66.2	-57.9	0.00	0.00	0.00
2,700.0	7.21	201.81	2,688.5	-177.2	-70.9	-62.0	0.00	0.00	0.00
2,800.0	7.21	201.81	2,787.7	-188.8	-75.6	-66.1	0.00	0.00	0.00
2,900.0	7.21	201.81	2,886.9	-200.5	-80.2	-70.2	0.00	0.00	0.00
3,000.0	7.21	201.81	2,986.1	-212.1	-84.9	-74.2	0.00	0.00	0.00
3,100.0	7.21	201.81	3,085.3	-223.8	-89.6	-78.3	0.00	0.00	0.00
3,200.0	7.21	201.81	3,184.5	-235.4	-94.2	-82.4	0.00	0.00	0.00
3,300.0	7.21	201.81	3,283.7	-247.1	-98.9	-86.5	0.00	0.00	0.00
3,400.0	7.21	201.81	3,382.9	-258.7	-103.6	-90.6	0.00	0.00	0.00
3,500.0	7.21	201.81	3,482.1	-270.4	-108.2	-94.6	0.00	0.00	0.00
3,600.0	7.21	201.81	3,581.3	-282.1	-112.9	-98.7	0.00	0.00	0.00
3,700.0	7.21	201.81	3,680.5	-293.7	-117.5	-102.8	0.00	0.00	0.00
3,800.0	7.21	201.81	3,779.7	-305.4	-122.2	-106.9	0.00	0.00	0.00
3,900.0	7.21	201.81	3,879.0	-317.0	-126.9	-110.9	0.00	0.00	0.00
4,000.0	7.21	201.81	3,978.2	-328.7	-131.5	-115.0	0.00	0.00	0.00
4,100.0	7.21	201.81	4,077.4	-340.3	-136.2	-119.1	0.00	0.00	0.00
4,200.0	7.21	201.81	4,176.6	-352.0	-140.9	-123.2	0.00	0.00	0.00
4,300.0	7.21	201.81	4,275.8	-363.6	-145.5	-127.3	0.00	0.00	0.00
4,400.0	7.21	201.81	4,375.0	-375.3	-150.2	-131.3	0.00	0.00	0.00
4,500.0	7.21	201.81	4,474.2	-387.0	-154.9	-135.4	0.00	0.00	0.00
4,600.0	7.21	201.81	4,573.4	-398.6	-159.5	-139.5	0.00	0.00	0.00
4,700.0	7.21	201.81	4,672.6	-410.3	-164.2	-143.6	0.00	0.00	0.00
4,800.0	7.21	201.81	4,771.8	-421.9	-168.9	-147.7	0.00	0.00	0.00
4,900.0	7.21	201.81	4,871.0	-433.6	-173.5	-151.7	0.00	0.00	0.00
5,000.0	7.21	201.81	4,970.3	-445.2	-178.2	-155.8	0.00	0.00	0.00
5,100.0	7.21	201.81	5,069.5	-456.9	-182.9	-159.9	0.00	0.00	0.00
5,200.0	7.21	201.81	5,168.7	-468.5	-187.5	-164.0	0.00	0.00	0.00

Bill Barrett Corp

Planning Report

Database:	Compass	Local Co-ordinate Reference:	Well CVR 5-63-32-4956B2
Company:	BILL BARRETT CORP	TVD Reference:	KB @ 4597.0ft (Original Well Elev)
Project:	WELD COUNTY, COLORADO	MD Reference:	KB @ 4597.0ft (Original Well Elev)
Site:	CVR 5-63-32_33 Pad	North Reference:	True
Well:	CVR 5-63-32-4956B2	Survey Calculation Method:	Minimum Curvature
Wellbore:	Wellbore #1		
Design:	Design #1		

Planned Survey									
Measured Depth (ft)	Inclination (°)	Azimuth (°)	Vertical Depth (ft)	+N/-S (ft)	+E/-W (ft)	Vertical Section (ft)	Dogleg Rate (°/100ft)	Build Rate (°/100ft)	Turn Rate (°/100ft)
5,300.0	7.21	201.81	5,267.9	-480.2	-192.2	-168.1	0.00	0.00	0.00
5,353.4	7.21	201.81	5,320.9	-486.4	-194.7	-170.2	0.00	0.00	0.00
5,400.0	6.28	201.81	5,367.1	-491.5	-196.7	-172.0	2.00	-2.00	0.00
5,500.0	4.28	201.81	5,466.7	-500.1	-200.1	-175.0	2.00	-2.00	0.00
5,600.0	2.28	201.81	5,566.5	-505.4	-202.3	-176.9	2.00	-2.00	0.00
5,700.0	0.28	201.81	5,666.5	-507.4	-203.1	-177.6	2.00	-2.00	0.00
5,714.0	0.00	89.91	5,680.5	-507.5	-203.1	-177.6	2.00	-2.00	0.00
5,800.0	0.00	89.91	5,766.5	-507.5	-203.1	-177.6	0.00	0.00	0.00
5,900.0	0.00	89.91	5,866.5	-507.5	-203.1	-177.6	0.00	0.00	0.00
5,964.0	0.00	89.91	5,930.5	-507.5	-203.1	-177.6	0.00	0.00	0.00
6,000.0	4.32	89.91	5,966.5	-507.5	-201.7	-176.2	12.00	12.00	0.00
6,100.0	16.32	89.91	6,064.7	-507.4	-183.9	-158.4	12.00	12.00	0.00
6,200.0	28.32	89.91	6,157.0	-507.4	-146.0	-120.5	12.00	12.00	0.00
6,300.0	40.32	89.91	6,239.5	-507.3	-89.7	-64.3	12.00	12.00	0.00
6,400.0	52.32	89.91	6,308.4	-507.2	-17.5	7.8	12.00	12.00	0.00
6,500.0	64.32	89.91	6,360.8	-507.0	67.4	92.6	12.00	12.00	0.00
6,600.0	76.32	89.91	6,394.4	-506.9	161.4	186.4	12.00	12.00	0.00
6,700.0	88.32	89.91	6,407.8	-506.7	260.3	285.2	12.00	12.00	0.00
6,715.0	90.12	89.91	6,408.0	-506.7	275.4	300.2	12.00	12.00	0.00
CVR 5-63-32-4956B2 LP									
6,800.0	90.12	89.91	6,407.8	-506.6	360.3	385.1	0.00	0.00	0.00
6,900.0	90.12	89.91	6,407.6	-506.4	460.3	485.0	0.00	0.00	0.00
7,000.0	90.12	89.91	6,407.4	-506.3	560.3	584.8	0.00	0.00	0.00
7,100.0	90.12	89.91	6,407.2	-506.1	660.3	684.7	0.00	0.00	0.00
7,200.0	90.12	89.91	6,407.0	-506.0	760.3	784.6	0.00	0.00	0.00
7,300.0	90.12	89.91	6,406.8	-505.8	860.3	884.4	0.00	0.00	0.00
7,400.0	90.12	89.91	6,406.6	-505.6	960.3	984.3	0.00	0.00	0.00
7,500.0	90.12	89.91	6,406.4	-505.5	1,060.3	1,084.2	0.00	0.00	0.00
7,600.0	90.12	89.91	6,406.2	-505.3	1,160.3	1,184.0	0.00	0.00	0.00
7,700.0	90.12	89.91	6,405.9	-505.2	1,260.3	1,283.9	0.00	0.00	0.00
7,800.0	90.12	89.91	6,405.7	-505.0	1,360.3	1,383.8	0.00	0.00	0.00
7,900.0	90.12	89.91	6,405.5	-504.9	1,460.3	1,483.6	0.00	0.00	0.00
8,000.0	90.12	89.91	6,405.3	-504.7	1,560.3	1,583.5	0.00	0.00	0.00
8,100.0	90.12	89.91	6,405.1	-504.5	1,660.3	1,683.4	0.00	0.00	0.00
8,200.0	90.12	89.91	6,404.9	-504.4	1,760.3	1,783.2	0.00	0.00	0.00
8,300.0	90.12	89.91	6,404.7	-504.2	1,860.3	1,883.1	0.00	0.00	0.00
8,400.0	90.12	89.91	6,404.5	-504.1	1,960.3	1,983.0	0.00	0.00	0.00
8,500.0	90.12	89.91	6,404.3	-503.9	2,060.3	2,082.9	0.00	0.00	0.00
8,600.0	90.12	89.91	6,404.1	-503.8	2,160.3	2,182.7	0.00	0.00	0.00
8,700.0	90.12	89.91	6,403.9	-503.6	2,260.3	2,282.6	0.00	0.00	0.00
8,800.0	90.12	89.91	6,403.7	-503.4	2,360.3	2,382.5	0.00	0.00	0.00
8,900.0	90.12	89.91	6,403.4	-503.3	2,460.3	2,482.3	0.00	0.00	0.00
9,000.0	90.12	89.91	6,403.2	-503.1	2,560.3	2,582.2	0.00	0.00	0.00
9,100.0	90.12	89.91	6,403.0	-503.0	2,660.3	2,682.1	0.00	0.00	0.00
9,200.0	90.12	89.91	6,402.8	-502.8	2,760.3	2,781.9	0.00	0.00	0.00
9,300.0	90.12	89.91	6,402.6	-502.7	2,860.3	2,881.8	0.00	0.00	0.00
9,400.0	90.12	89.91	6,402.4	-502.5	2,960.3	2,981.7	0.00	0.00	0.00
9,500.0	90.12	89.91	6,402.2	-502.3	3,060.3	3,081.5	0.00	0.00	0.00
9,600.0	90.12	89.91	6,402.0	-502.2	3,160.3	3,181.4	0.00	0.00	0.00
9,700.0	90.12	89.91	6,401.8	-502.0	3,260.3	3,281.3	0.00	0.00	0.00
9,800.0	90.12	89.91	6,401.6	-501.9	3,360.3	3,381.1	0.00	0.00	0.00
9,900.0	90.12	89.91	6,401.4	-501.7	3,460.3	3,481.0	0.00	0.00	0.00
10,000.0	90.12	89.91	6,401.2	-501.6	3,560.3	3,580.9	0.00	0.00	0.00

Bill Barrett Corp

Planning Report

Database:	Compass	Local Co-ordinate Reference:	Well CVR 5-63-32-4956B2
Company:	BILL BARRETT CORP	TVD Reference:	KB @ 4597.0ft (Original Well Elev)
Project:	WELD COUNTY, COLORADO	MD Reference:	KB @ 4597.0ft (Original Well Elev)
Site:	CVR 5-63-32_33 Pad	North Reference:	True
Well:	CVR 5-63-32-4956B2	Survey Calculation Method:	Minimum Curvature
Wellbore:	Wellbore #1		
Design:	Design #1		

Planned Survey									
Measured Depth (ft)	Inclination (°)	Azimuth (°)	Vertical Depth (ft)	+N/-S (ft)	+E/-W (ft)	Vertical Section (ft)	Dogleg Rate (°/100ft)	Build Rate (°/100ft)	Turn Rate (°/100ft)
10,100.0	90.12	89.91	6,400.9	-501.4	3,660.3	3,680.7	0.00	0.00	0.00
10,200.0	90.12	89.91	6,400.7	-501.2	3,760.3	3,780.6	0.00	0.00	0.00
10,300.0	90.12	89.91	6,400.5	-501.1	3,860.3	3,880.5	0.00	0.00	0.00
10,400.0	90.12	89.91	6,400.3	-500.9	3,960.3	3,980.3	0.00	0.00	0.00
10,500.0	90.12	89.91	6,400.1	-500.8	4,060.3	4,080.2	0.00	0.00	0.00
10,600.0	90.12	89.91	6,399.9	-500.6	4,160.3	4,180.1	0.00	0.00	0.00
10,700.0	90.12	89.91	6,399.7	-500.5	4,260.3	4,279.9	0.00	0.00	0.00
10,800.0	90.12	89.91	6,399.5	-500.3	4,360.3	4,379.8	0.00	0.00	0.00
10,900.0	90.12	89.91	6,399.3	-500.1	4,460.3	4,479.7	0.00	0.00	0.00
11,000.0	90.12	89.91	6,399.1	-500.0	4,560.3	4,579.6	0.00	0.00	0.00
11,100.0	90.12	89.91	6,398.9	-499.8	4,660.3	4,679.4	0.00	0.00	0.00
11,200.0	90.12	89.91	6,398.7	-499.7	4,760.3	4,779.3	0.00	0.00	0.00
11,300.0	90.12	89.91	6,398.4	-499.5	4,860.3	4,879.2	0.00	0.00	0.00
11,400.0	90.12	89.91	6,398.2	-499.4	4,960.3	4,979.0	0.00	0.00	0.00
11,500.0	90.12	89.91	6,398.0	-499.2	5,060.3	5,078.9	0.00	0.00	0.00
11,600.0	90.12	89.91	6,397.8	-499.0	5,160.3	5,178.8	0.00	0.00	0.00
11,700.0	90.12	89.91	6,397.6	-498.9	5,260.3	5,278.6	0.00	0.00	0.00
11,800.0	90.12	89.91	6,397.4	-498.7	5,360.3	5,378.5	0.00	0.00	0.00
11,900.0	90.12	89.91	6,397.2	-498.6	5,460.3	5,478.4	0.00	0.00	0.00
12,000.0	90.12	89.91	6,397.0	-498.4	5,560.3	5,578.2	0.00	0.00	0.00
12,100.0	90.12	89.91	6,396.8	-498.3	5,660.3	5,678.1	0.00	0.00	0.00
12,200.0	90.12	89.91	6,396.6	-498.1	5,760.3	5,778.0	0.00	0.00	0.00
12,300.0	90.12	89.91	6,396.4	-497.9	5,860.3	5,877.8	0.00	0.00	0.00
12,400.0	90.12	89.91	6,396.1	-497.8	5,960.3	5,977.7	0.00	0.00	0.00
12,500.0	90.12	89.91	6,395.9	-497.6	6,060.3	6,077.6	0.00	0.00	0.00
12,600.0	90.12	89.91	6,395.7	-497.5	6,160.3	6,177.4	0.00	0.00	0.00
12,700.0	90.12	89.91	6,395.5	-497.3	6,260.3	6,277.3	0.00	0.00	0.00
12,800.0	90.12	89.91	6,395.3	-497.2	6,360.3	6,377.2	0.00	0.00	0.00
12,900.0	90.12	89.91	6,395.1	-497.0	6,460.3	6,477.0	0.00	0.00	0.00
13,000.0	90.12	89.91	6,394.9	-496.8	6,560.3	6,576.9	0.00	0.00	0.00
13,100.0	90.12	89.91	6,394.7	-496.7	6,660.3	6,676.8	0.00	0.00	0.00
13,200.0	90.12	89.91	6,394.5	-496.5	6,760.3	6,776.6	0.00	0.00	0.00
13,300.0	90.12	89.91	6,394.3	-496.4	6,860.3	6,876.5	0.00	0.00	0.00
13,400.0	90.12	89.91	6,394.1	-496.2	6,960.3	6,976.4	0.00	0.00	0.00
13,500.0	90.12	89.91	6,393.9	-496.1	7,060.3	7,076.3	0.00	0.00	0.00
13,600.0	90.12	89.91	6,393.6	-495.9	7,160.3	7,176.1	0.00	0.00	0.00
13,700.0	90.12	89.91	6,393.4	-495.7	7,260.3	7,276.0	0.00	0.00	0.00
13,800.0	90.12	89.91	6,393.2	-495.6	7,360.3	7,375.9	0.00	0.00	0.00
13,900.0	90.12	89.91	6,393.0	-495.4	7,460.3	7,475.7	0.00	0.00	0.00
14,000.0	90.12	89.91	6,392.8	-495.3	7,560.3	7,575.6	0.00	0.00	0.00
14,100.0	90.12	89.91	6,392.6	-495.1	7,660.3	7,675.5	0.00	0.00	0.00
14,200.0	90.12	89.91	6,392.4	-495.0	7,760.3	7,775.3	0.00	0.00	0.00
14,300.0	90.12	89.91	6,392.2	-494.8	7,860.3	7,875.2	0.00	0.00	0.00
14,400.0	90.12	89.91	6,392.0	-494.6	7,960.3	7,975.1	0.00	0.00	0.00
14,500.0	90.12	89.91	6,391.8	-494.5	8,060.3	8,074.9	0.00	0.00	0.00
14,600.0	90.12	89.91	6,391.6	-494.3	8,160.3	8,174.8	0.00	0.00	0.00
14,700.0	90.12	89.91	6,391.4	-494.2	8,260.3	8,274.7	0.00	0.00	0.00
14,800.0	90.12	89.91	6,391.1	-494.0	8,360.3	8,374.5	0.00	0.00	0.00
14,900.0	90.12	89.91	6,390.9	-493.9	8,460.3	8,474.4	0.00	0.00	0.00
15,000.0	90.12	89.91	6,390.7	-493.7	8,560.3	8,574.3	0.00	0.00	0.00
15,100.0	90.12	89.91	6,390.5	-493.5	8,660.3	8,674.1	0.00	0.00	0.00
15,200.0	90.12	89.91	6,390.3	-493.4	8,760.3	8,774.0	0.00	0.00	0.00
15,300.0	90.12	89.91	6,390.1	-493.2	8,860.3	8,873.9	0.00	0.00	0.00
15,400.0	90.12	89.91	6,389.9	-493.1	8,960.3	8,973.7	0.00	0.00	0.00

Bill Barrett Corp

Planning Report

Database:	Compass	Local Co-ordinate Reference:	Well CVR 5-63-32-4956B2
Company:	BILL BARRETT CORP	TVD Reference:	KB @ 4597.0ft (Original Well Elev)
Project:	WELD COUNTY, COLORADO	MD Reference:	KB @ 4597.0ft (Original Well Elev)
Site:	CVR 5-63-32_33 Pad	North Reference:	True
Well:	CVR 5-63-32-4956B2	Survey Calculation Method:	Minimum Curvature
Wellbore:	Wellbore #1		
Design:	Design #1		

Planned Survey										
Measured Depth (ft)	Inclination (°)	Azimuth (°)	Vertical Depth (ft)	+N/-S (ft)	+E/-W (ft)	Vertical Section (ft)	Dogleg Rate (°/100ft)	Build Rate (°/100ft)	Turn Rate (°/100ft)	
15,500.0	90.12	89.91	6,389.7	-492.9	9,060.3	9,073.6	0.00	0.00	0.00	
15,600.0	90.12	89.91	6,389.5	-492.8	9,160.3	9,173.5	0.00	0.00	0.00	
15,700.0	90.12	89.91	6,389.3	-492.6	9,260.3	9,273.3	0.00	0.00	0.00	
15,800.0	90.12	89.91	6,389.1	-492.4	9,360.3	9,373.2	0.00	0.00	0.00	
15,900.0	90.12	89.91	6,388.9	-492.3	9,460.3	9,473.1	0.00	0.00	0.00	
16,000.0	90.12	89.91	6,388.6	-492.1	9,560.3	9,573.0	0.00	0.00	0.00	
16,100.0	90.12	89.91	6,388.4	-492.0	9,660.3	9,672.8	0.00	0.00	0.00	
16,200.0	90.12	89.91	6,388.2	-491.8	9,760.3	9,772.7	0.00	0.00	0.00	
16,300.0	90.12	89.91	6,388.0	-491.7	9,860.3	9,872.6	0.00	0.00	0.00	
16,309.7	90.12	89.91	6,388.0	-491.6	9,870.0	9,882.2	0.00	0.00	0.00	
CVR 5-63-32-4956B2 PBHL										