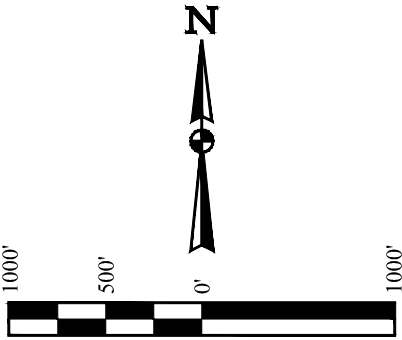
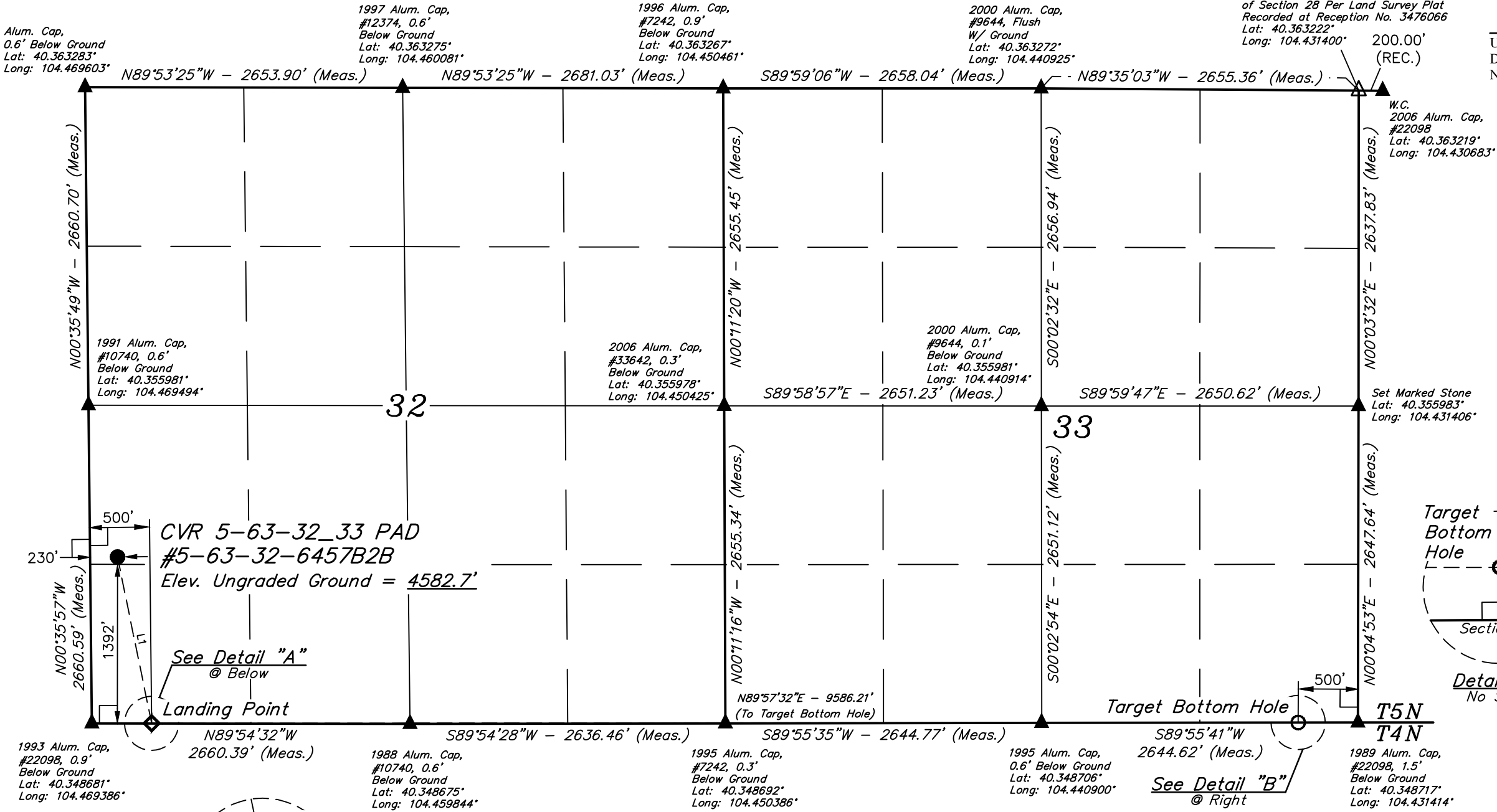


T5N, R63W, 6th P.M.

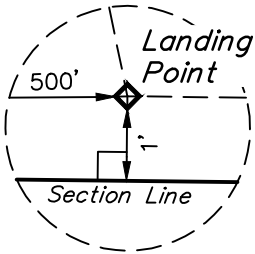
BILL BARRETT CORPORATION
CVR 5-63-32 33 PAD #5-63-32-6457B2B
NW 1/4 SW 1/4, SECTION 32, T5N, R63W, 6th P.M.
WELD COUNTY, COLORADO

BASIS OF BEARINGS
BASIS OF ELEVATION

USGS COOPERATIVE BASE NETWORK CONTROL STATION,
DESIGNATION 'M414'. NGS DATA SHEET LISTS THE
NAVD 88 ELEVATION AS BEING 4600.58 FEET



LINE TABLE		
LINE	DIRECTION	LENGTH
L1	S11°33'29"E	1420.36'



Detail "A"
No Scale

- LEGEND:
- 90° SYMBOL
 - PROPOSED WELLHEAD.
 - TARGET BOTTOM HOLE.
 - LANDING POINT.
 - SECTION CORNERS LOCATED. (NAD 83)
 - SECTION CORNERS RE-ESTABLISHED. (Not Set on Ground.) (NAD 83)

NAD 83 (SURFACE LOCATION)	NAD 83 (LANDING POINT)	NAD 83 (TARGET BOTTOM HOLE)
LATITUDE = 40°21'09.00" (40.352500)	LATITUDE = 40°20'55.26" (40.348683)	LATITUDE = 40°20'55.38" (40.348717)
LONGITUDE = 104°28'07.02" (104.468617)	LONGITUDE = 104°28'03.33" (104.467592)	LONGITUDE = 104°25'59.55" (104.433208)
NAD 27 (SURFACE LOCATION)	NAD 27 (LANDING POINT)	NAD 27 (TARGET BOTTOM HOLE)
LATITUDE = 40°21'09.07" (40.352519)	LATITUDE = 40°20'55.32" (40.348700)	LATITUDE = 40°20'55.45" (40.348736)
LONGITUDE = 104°28'05.18" (104.468106)	LONGITUDE = 104°28'01.49" (104.467081)	LONGITUDE = 104°25'57.71" (104.432697)
STATE PLANE NAD 83 (CO. NORTH)	STATE PLANE NAD 83 (CO. NORTH)	STATE PLANE NAD 83 (CO. NORTH)
N: 1372928.11 E: 3287445.37	N: 1371540.57 E: 3287747.23	N: 1371667.13 E: 3297330.10
STATE PLANE NAD 27 (CO. NORTH)	STATE PLANE NAD 27 (CO. NORTH)	STATE PLANE NAD 27 (CO. NORTH)
N: 372930.03 E: 2287595.38	N: 371542.52 E: 2287897.25	N: 371669.11 E: 2297480.14

PDOP = 1.4

CERTIFICATE
THIS IS TO CERTIFY THAT THE ABOVE PLAT WAS PREPARED FROM FIELD NOTES OF ACTUAL SURVEYS MADE BY ME OR UNDER MY SUPERVISION AND THAT THE SAME ARE TRUE AND CORRECT TO THE BEST OF MY KNOWLEDGE AND BELIEF.



UELS, LLC
Corporate Office * 85 South 200 East
Vernal, UT 84078 * (435) 789-1017

SURVEYED BY	ZANE BULLARD, B.B.	05-05-16	SCALE
DRAWN BY	K.B.	06-22-16	1" = 1000'

WELL LOCATION PLAT