

WELL LOCATION CERTIFICATE: GUEST 3C-25HZ

SECTION 13, TOWNSHIP 2 NORTH, RANGE 65 WEST, 6TH P.M.

NW COR. SEC. 13
2" ALUM. CAP
PLS 25937, 1996

S 89°36'41" E 2594.89'

S 89°36'50" E 2594.45'

NE COR. SEC. 13
3 1/4" ALUM. CAP
PLS 23520, 2002

N 1/4 COR. SEC. 13
2" ALUM. CAP
PLS 25937, 1996

(BASIS OF BEARINGS) SEE NOTE 2

NOTES:
BH AND HEEL (WGS 84 UTM 13N)
LOCATIONS PROVIDED BY CLIENT.
SEE ATTACHED MAP FOR ADDITIONAL
IMPROVEMENTS WITHIN 500'.

PDOP= 2.0
GPS OPERATOR: BEN MILIUS

SURFACE LOCATION
GROUND ELEVATION= 4872'
NAD83 STATE PLANE CO N
LATITUDE= 40.137758°
LONGITUDE= 104.614533°

LATITUDE= 40°08'15.928"
LONGITUDE= 104°36'52.320"

HEEL LOCATION
WGS84 UTM 13N
LATITUDE= 40.138279°
LONGITUDE= 104.614557°

LATITUDE= 40°08'17.806"
LONGITUDE= 104°36'52.407"

BOTTOM HOLE LOCATION
NAD83 STATE PLANE CO N
LATITUDE= 40.114356°
LONGITUDE= 104.614083°

LATITUDE= 40°06'51.682"
LONGITUDE= 104°36'50.699"

W 1/4 COR. SEC. 13
3 1/4" ALUM. CAP
PLS 10855, 1998

N 02°35'23" W 190'
(TRUE N 02°01'03" W)

S 89°55'24" E 2605.94'

HEEL- 2580' FSL

1968' 1960' FWL

GUEST
3C-25HZ

S 89°49'20" E 2602.73'
C 1/4 COR. SEC. 13
3 1/4" ALUM. CAP
PLS 24307, 2006

E 1/4 COR. SEC. 13
3 1/4" ALUM. CAP
PLS 27269, 2004

SW COR. SEC. 13
2 1/2" ALUM. CAP
PLS 34980, 2007

S 89°57'07" W 2609.78'

S 89°57'07" W 2609.78'

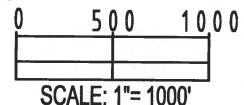
SE COR. SEC. 13
3 1/4" ALUM. CAP
PLS 27269, 1998

BH-868' FNL
2139' FWL

LEGEND

WELL GUEST 3C-25HZ TO BE LOCATED 2390' FSL AND 1968' FWL

- = EXISTING MONUMENT ♦ = BOTTOM HOLE
● = PROPOSED WELL ▲ = HEEL LOCATION
BH = BOTTOM HOLE ○ = CALCULATED POSITION



NOTES:

- THIS FIELD SURVEY CONFORMS TO THE MINIMUM STANDARDS SET BY THE C.O.G.C.C., RULE NO. 215
- BEARINGS ARE BASED ON THE ASSUMPTION THAT THE NORTH LINE OF THE NORTHEAST QUARTER OF SECTION 13, BEARS S89°36'50"E BETWEEN THE MONUMENTS DESCRIBED HEREON.
- GRID DISTANCES ARE SHOWN, AS MEASURED IN THE FIELD, WITH TIES TO WELLS MEASURED PERPENDICULAR TO SECTION LINES. TO GET GROUND DISTANCES MULTIPLY THE SHOWN DISTANCE BY 1.000272228.
- ALL LINES SHOWN THAT ARE WITHOUT DIMENSION SHOULD BE CONSIDERED SCALED AND ONLY REPRESENT A GRAPHICAL DEPICTION OF THE APPROXIMATE LOCATION OF SAID LINE.
- CERTIFIED OCTOBER 18, 2014 FOR WELLS STAKED ON OCTOBER 3, 2014. SECOND REVISION DECEMBER 7, 2016 FOR BHL CHANGES.

I, JACOB S. FRISCH, A LICENSED PROFESSIONAL LAND SURVEYOR IN THE STATE OF COLORADO DO HEREBY CERTIFY TO **KERR-MCGEE OIL & GAS ONSHORE LP**, THAT THE SURVEY AND WELL LOCATION CERTIFICATE SHOWN HEREON WERE DONE BY ME OR UNDER MY DIRECT SUPERVISION AND THAT THE DRAWING SHOWN HEREON ACCURATELY DEPICTS THE PROPOSED LOCATION OF THE WELL. THIS CERTIFICATE DOES NOT REPRESENT A LAND SURVEY PLAT OR IMPROVEMENT SURVEY PLAT AS DEFINED BY C.R.S. 38-51-102 AND CANNOT BE RELIED UPON TO DETERMINE OWNERSHIP.



SHEET 1 OF 3

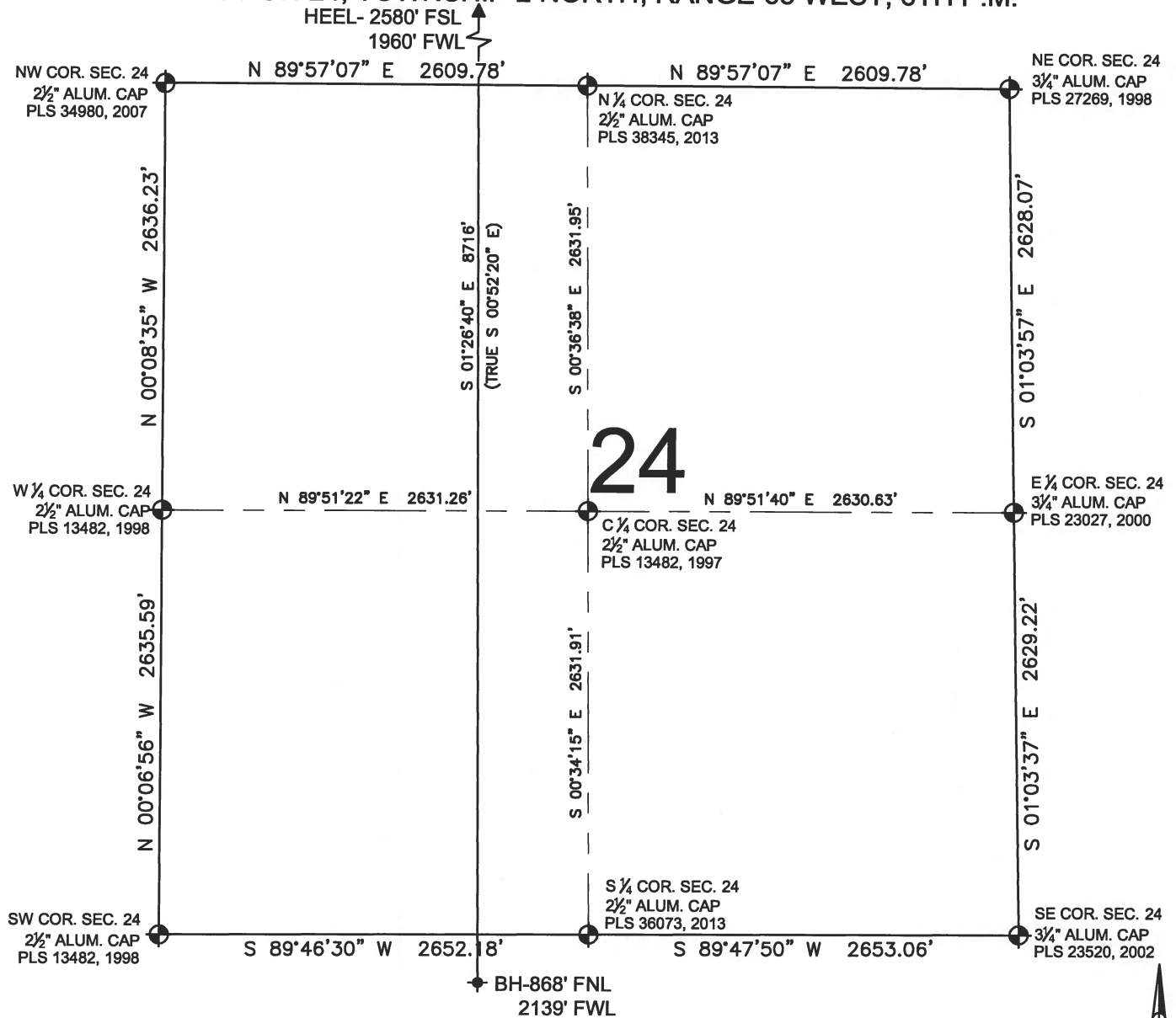
PREPARED BY:
PFS
Petroleum Field Services, LLC
7535 Hilltop Circle
Denver, CO 80221

FIELD DATE:
01-08-15
DRAWING DATE:
11-29-16
BY: BMO
CHECKED: MLP
SURFACE LOCATION:
NE 1/4 SW 1/4,
SEC. 13, T2N, R65W, 6TH P.M.
WELD COUNTY, COLORADO

NOTICE: ACCORDING TO COLORADO LAW YOU MUST COMMENCE ANY LEGAL ACTION BASED UPON ANY DEFECT IN THIS SURVEY WITHIN THREE YEARS AFTER YOU FIRST DISCOVER SUCH DEFECT. IN NO EVENT MAY ANY ACTION BASED UPON ANY DEFECT IN THIS SURVEY BE COMMENCED MORE THAN TEN YEARS FROM THIS SAID DATE OF THIS CERTIFICATION SHOWN HEREON.

WELL LOCATION CERTIFICATE: GUEST 3C-25HZ

SECTION 24, TOWNSHIP 2 NORTH, RANGE 65 WEST, 6TH P.M.



LEGEND

- = EXISTING MONUMENT
- = PROPOSED WELL
- BH = BOTTOM HOLE
- ◆ = BOTTOM HOLE
- ▲ = HEEL LOCATION
- = CALCULATED POSITION

0 500 1000

SCALE: 1"=1000'

NOTES:

- THIS FIELD SURVEY CONFORMS TO THE MINIMUM STANDARDS SET BY THE C.O.G.C.C., RULE NO. 215
- BEARINGS ARE BASED ON THE ASSUMPTION THAT THE NORTH LINE OF THE NORTHEAST QUARTER OF SECTION 13, BEARS S89°36'50"E BETWEEN THE MONUMENTS DESCRIBED HEREON.
- GRID DISTANCES ARE SHOWN, AS MEASURED IN THE FIELD, WITH TIES TO WELLS MEASURED PERPENDICULAR TO SECTION LINES. TO GET GROUND DISTANCES MULTIPLY THE SHOWN DISTANCE BY 1.000272228.
- ALL LINES SHOWN THAT ARE WITHOUT DIMENSION SHOULD BE CONSIDERED SCALED AND ONLY REPRESENT A GRAPHICAL DEPICTION OF THE APPROXIMATE LOCATION OF SAID LINE.
- CERTIFIED OCTOBER 18, 2014 FOR WELLS STAKED ON OCTOBER 3, 2014. SECOND REVISION DECEMBER 7, 2016 FOR BHL CHANGES.

SHEET 2 OF 3

PREPARED BY:
PFS
Petroleum Field Services, LLC
7535 Hilltop Circle
Denver, CO 80221

FIELD DATE:
01-08-15
DRAWING DATE:
11-29-16
BY:
BMO
CHECKED:
MLP

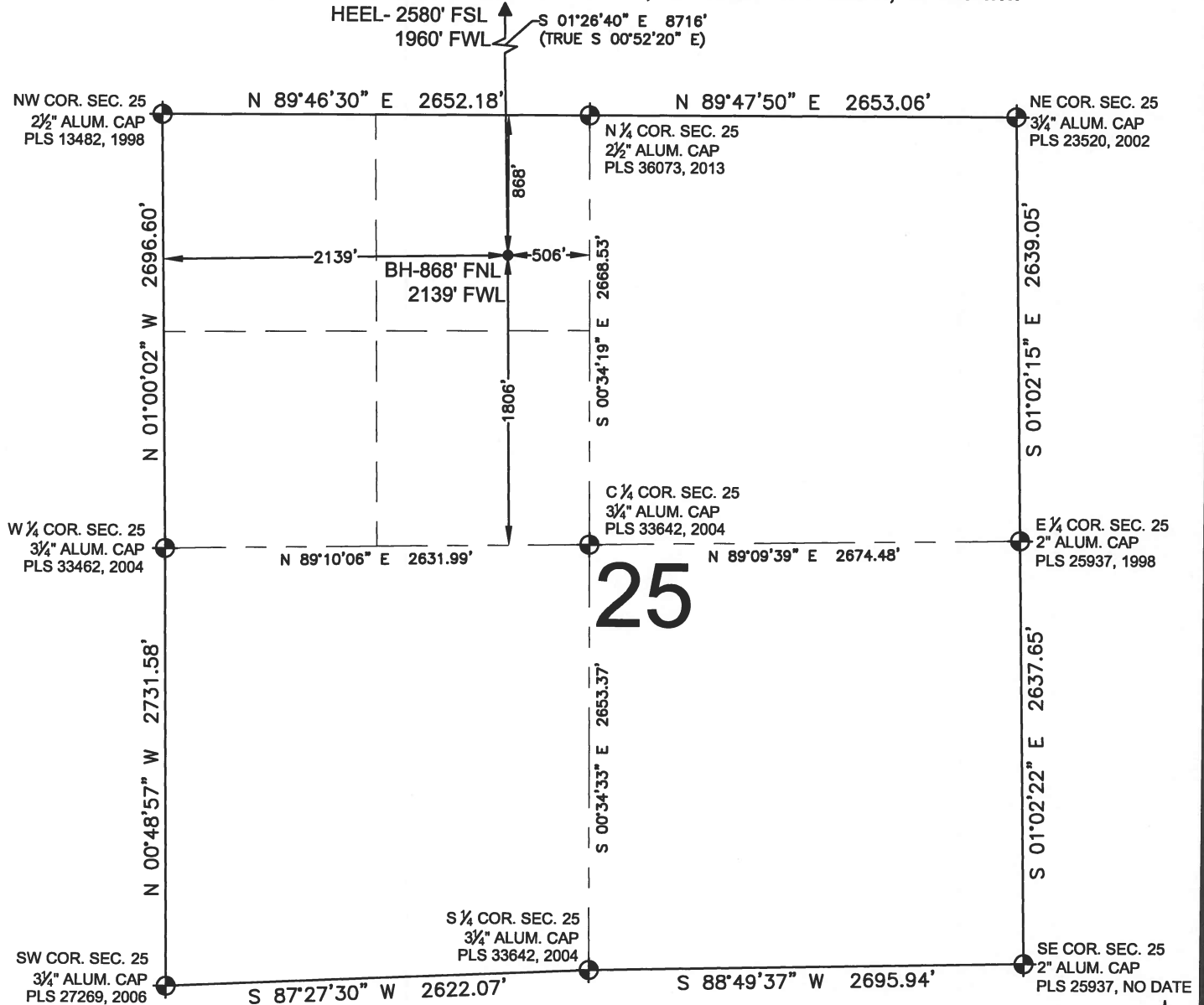
SURFACE LOCATION:
NE 1/4 SW 1/4,
SEC. 13, T2N, R65W, 6TH P.M.
WELD COUNTY, COLORADO



NOTICE: ACCORDING TO COLORADO LAW YOU MUST COMMENCE ANY LEGAL ACTION BASED UPON ANY DEFECT IN THIS SURVEY WITHIN THREE YEARS AFTER YOU FIRST DISCOVER SUCH DEFECT. IN NO EVENT MAY ANY ACTION BASED UPON ANY DEFECT IN THIS SURVEY BE COMMENCED MORE THAN TEN YEARS FROM THIS SAID DATE OF THIS CERTIFICATION SHOWN HEREON.

WELL LOCATION CERTIFICATE: GUEST 3C-25HZ

SECTION 25, TOWNSHIP 2 NORTH, RANGE 65 WEST, 6TH P.M.



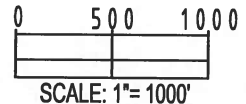
NOTES:

1. THIS FIELD SURVEY CONFORMS TO THE MINIMUM STANDARDS SET BY THE C.O.G.C.C., RULE NO. 215
2. BEARINGS ARE BASED ON THE ASSUMPTION THAT THE NORTH LINE OF THE NORTHEAST QUARTER OF SECTION 13, BEARS S89°36'50"E BETWEEN THE MONUMENTS DESCRIBED HEREON.
3. GRID DISTANCES ARE SHOWN, AS MEASURED IN THE FIELD, WITH TIES TO WELLS MEASURED PERPENDICULAR TO SECTION LINES. TO GET GROUND DISTANCES MULTIPLY THE SHOWN DISTANCE BY 1.000272228.
4. ALL LINES SHOWN THAT ARE WITHOUT DIMENSION SHOULD BE CONSIDERED SCALED AND ONLY REPRESENT A GRAPHICAL DEPICTION OF THE APPROXIMATE LOCATION OF SAID LINE.
5. CERTIFIED OCTOBER 18, 2014 FOR WELLS STAKED ON OCTOBER 3, 2014. SECOND REVISION DECEMBER 7, 2016 FOR BHL CHANGES.

SHEET 3 OF 3

LEGEND

- = EXISTING MONUMENT
- = PROPOSED WELL
- BH = BOTTOM HOLE
- ◆ = BOTTOM HOLE
- ▲ = HEEL LOCATION
- = CALCULATED POSITION



PREPARED BY:
PFS
Petroleum Field Services, LLC
7535 Hilltop Circle
Denver, CO 80221

FIELD DATE:
01-08-15

DRAWING DATE:
11-29-16

BY:
BMO

CHECKED:
MLP

SURFACE LOCATION:
NE 1/4 SW 1/4,
SEC. 13, T2N, R65W, 6TH P.M.

WELD COUNTY, COLORADO

NOTICE: ACCORDING TO COLORADO LAW YOU MUST COMMENCE ANY LEGAL ACTION BASED UPON ANY DEFECT IN THIS SURVEY WITHIN THREE YEARS AFTER YOU FIRST DISCOVER SUCH DEFECT. IN NO EVENT MAY ANY ACTION BASED UPON ANY DEFECT IN THIS SURVEY BE COMMENCED MORE THAN TEN YEARS FROM THIS SAID DATE OF THIS CERTIFICATION SHOWN HEREON.