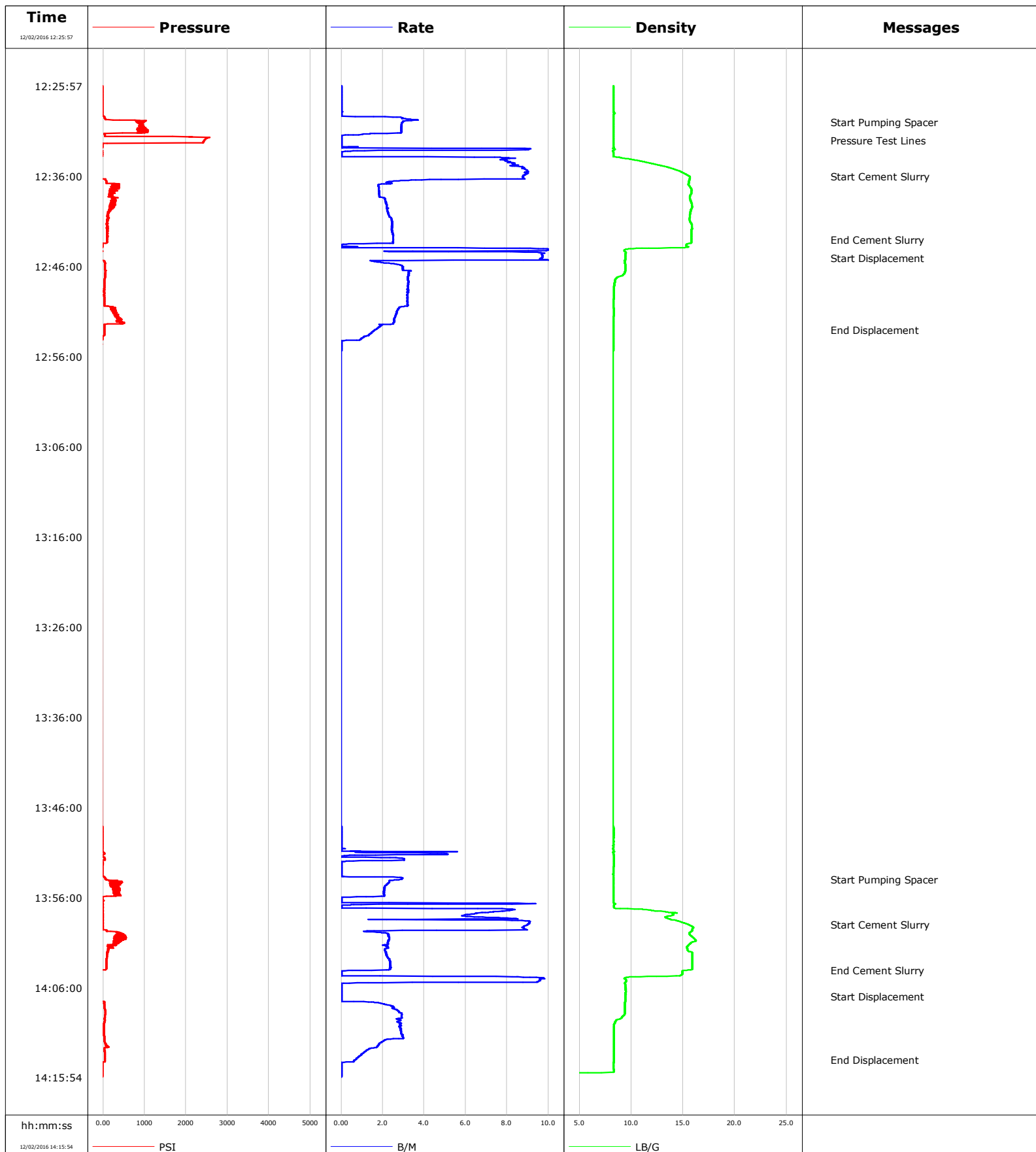


**Well** Ale Partnership W-29-10DI  
**Field** DJ  
**Engineer** Scot Thornton  
**Country** United States

**Client** Anadarko  
**SIR No.** DA6T-00161  
**Job Type** Nio and Sussex  
**Job Date** 12-02-2016



# Cementing Service Report

				Customer Anadarko				Job Number DA6T-00161			
Well <b>Ale Partnership W-29-10DI</b>			Location (legal)			Schlumberger Location			Job Start <b>Dec/02/2016</b>		
Field DJ		Formation Name/Type		Deviation deg		Bit Size in		Well MD ft		Well TVD ft	
County		State/Province		BHP psi		BHST degF		BHCT degF		Pore Press. Gradient lb/gal	
Well Master		API/UWI									
Rig Name		Drilled For Condensate		Service Via		Casing/ Liner					
						Depth, ft		Size, in		Weight, lb/ft	
										Grade	
										Thread	
Offshore Zone		Well Class Old		Well Type Other							
Drilling Fluid Type		Max. Density lb/gal		Plastic Viscosity cP		Tubing/Drill Pipe					
						T/D		Depth, ft		Size, in	
								Weight, lb/ft		Grade	
										Thread	
Service Line Cementing		Job Type Nio and Sussex				T		<b>7775.0</b>		2.4	
						T		<b>4730.0</b>		2.4	
Max. Allowed Tub. Press psi		Max. Allowed Ann. Press psi		WH Connection		Perforations/Open Hole					
						Top, ft		Bottom, ft		shot/ft	
										No. of Shots	
										Total Interval ft	
										Diameter in	
						Treat Down Tubing		Displacement bbl		Packer Type	
										Packer Depth ft	
						Tubing Vol. bbl		Casing Vol. bbl		Annular Vol. bbl	
										Openhole Vol. bbl	
Casing/Tubing Secured <input type="checkbox"/>		1 Hole Vol. Circulated prior to Cement <input type="checkbox"/>				Casing Tools				Squeeze Job	
Lift Pressure psi						Shoe Type				Squeeze Type	
Pipe Rotated <input type="checkbox"/>		Pipe Reciprocated <input type="checkbox"/>				Shoe Depth ft				Tool Type	
No. Centralizers		Top Plugs		Bottom Plugs		Stage Tool Type				Tool Depth ft	
Cement Head Type						Stage Tool Depth ft				Tail Pipe Size in	
Job Scheduled For Dec/02/2016 11:00		Arrived on Location Dec/02/2016 11:00		Leave Location Dec/02/2016 15:00		Collar Type				Tail Pipe Depth ft	
						Collar Depth ft				Sqz. Total Vol. bbl	
Date	Time 24-hr clock	Treating Pressure PSI	Flow Rate B/M	Density LB/G	Volume BBL	Message					
12/02/2016	12:25:57	-15	0.0	8.29	0.0	Started Acquisition					
12/02/2016	12:29:47	768	3.5	8.29	1.2						
12/02/2016	12:30:00	883	3.0	8.29	1.9	Start Pumping Spacer					
12/02/2016	12:32:00	2444	0.0	8.29	5.6	Pressure Test Lines					
12/02/2016	12:33:37	-28	0.0	8.29	5.6						
12/02/2016	12:36:00	-33	8.8	15.61	5.6	Start Cement Slurry					
12/02/2016	12:37:27	283	1.8	15.80	8.7						
12/02/2016	12:41:17	104	2.5	15.80	17.0						
12/02/2016	12:43:00	86	2.5	15.80	21.2	End Cement Slurry					
12/02/2016	12:45:00	-28	9.7	9.42	22.4	Start Displacement					
12/02/2016	12:45:07	-28	9.6	9.42	22.4						
12/02/2016	12:48:57	31	3.2	8.31	33.3						
12/02/2016	12:52:47	27	1.8	8.29	44.0						
12/02/2016	12:53:00	27	1.7	8.29	44.4	End Displacement					
12/02/2016	13:50:17	-15	0.0	8.27	0.0						
12/02/2016	13:54:00	59	2.9	8.29	3.2	Start Pumping Spacer					
12/02/2016	13:54:07	352	2.3	8.30	3.5						
12/02/2016	13:57:57	-10	6.0	14.01	7.4						
12/02/2016	13:59:00	-10	9.0	15.54	7.4	Start Cement Slurry					
12/02/2016	14:01:47	146	2.1	15.41	12.2						
12/02/2016	14:04:00	63	2.3	15.80	17.2	End Cement Slurry					

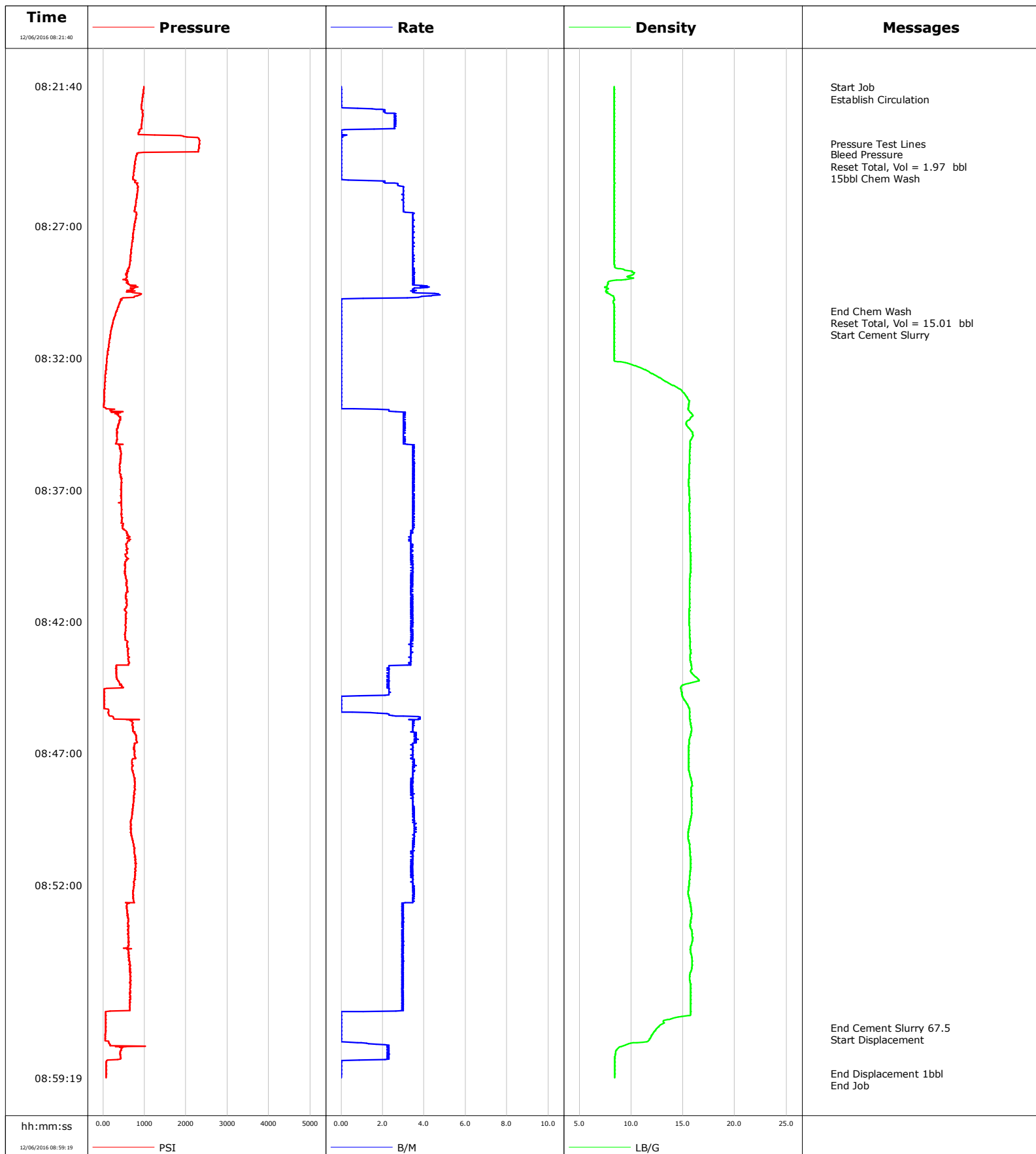
Well Ale Partnership W-29-10DI			Field DJ		Job Start Dec/02/2016		Customer Anadarko		Job Number DA6T-00161	
Date	Time 24-hr clock	Treating Pressure PSI		Flow Rate B/M	Density LB/G		Volume BBL		Message	
12/02/2016	14:07:00	-28		0.0	9.44		17.3		Start Displacement	
12/02/2016	14:09:27	36		2.7	8.94		22.2			
12/02/2016	14:13:17	40		1.0	8.33		31.2			

### Post Job Summary

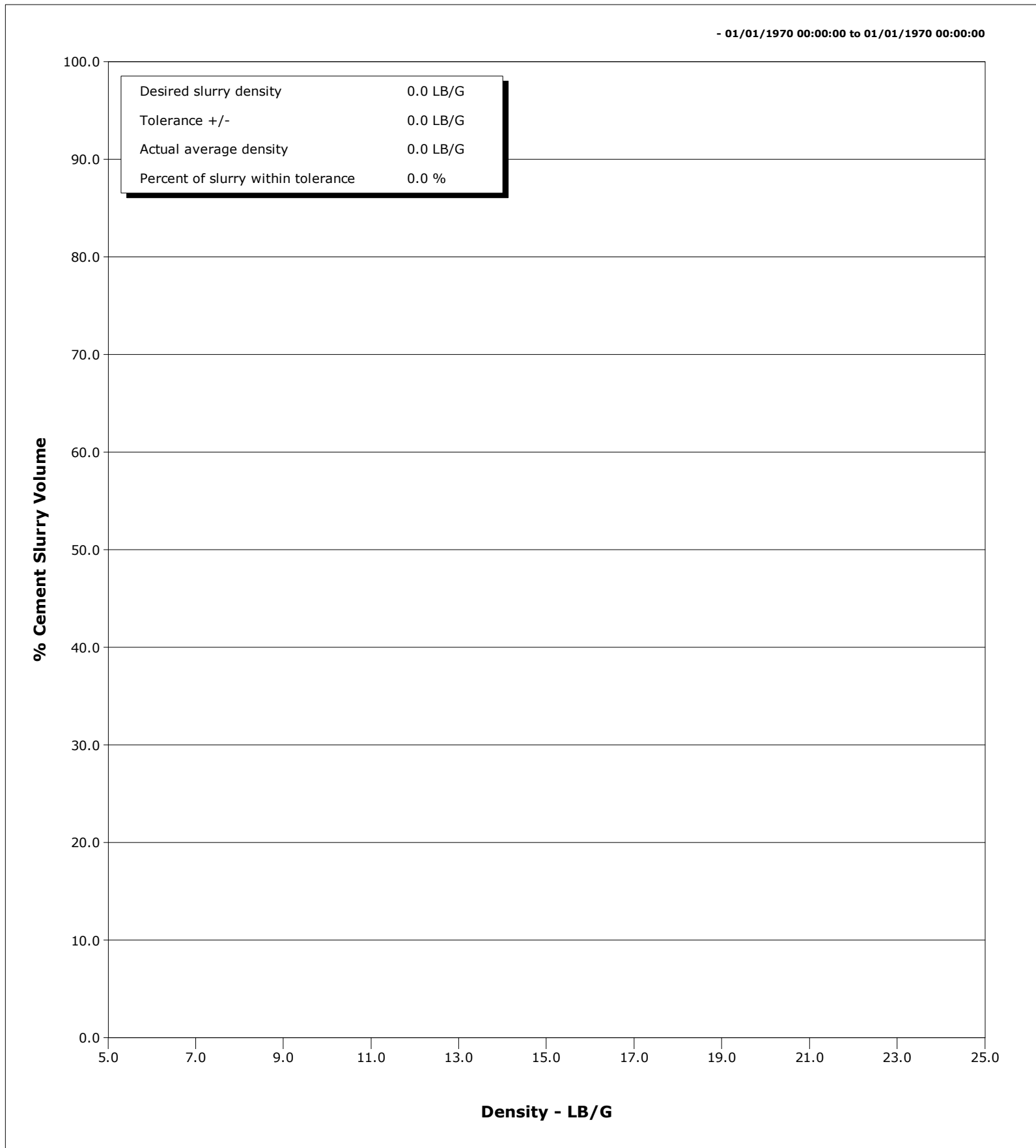
Average Pump Rates, bbl/min					Volume of Fluid Injected, bbl						
Slurry 3.4	N2	Mud	Maximum Rate 10.2		Total Slurry 32.0	Mud 0.0	Spacer 0.0	N2			
Treating Pressure Summary, psi					Breakdown Fluid						
Maximum 2581	Final -24	Average 210	Bump Plug to	Breakdown	Type	Volume bbl		Density lb/gal			
Avg. N2 Percent %	Designed Slurry Volume 0.0 bbl		Displacement 0.0 bbl	Mix Water Temp degF	Cement Circulated to Surface? <input type="checkbox"/>		Volume bbl				
					Washed Thru Perfs <input type="checkbox"/>		To ft				
Customer or Authorized Representative Socorro Olivas			Schlumberger Supervisor Scot Thornton			Circulation Lost <input type="checkbox"/>	Job Completed <input type="checkbox"/>				
						-	-				

**Well** Ale Partnership Fed.  
**Field** DJ  
**Engineer** Chris Valerio  
**Country** United States

**Client** Anadarko  
**SIR No.** DA6T-00165  
**Job Type** Stub Plug  
**Job Date** 12-06-2016



<b>Well</b>	Ale Partnership Fed.	<b>Client</b>	Anadarko
<b>Field</b>	DJ	<b>SIR No.</b>	DA6T-00165
<b>Engineer</b>	Chris Valerio	<b>Job Type</b>	Stub Plug
<b>Country</b>	United States	<b>Job Date</b>	12-06-2016



# Cementing Service Report

				Customer Anadarko			Job Number DA6T-00165		
Well <b>Ale Partnership Fed. W9-10DI</b>			Location (legal)		Schlumberger Location			Job Start <b>Dec/06/2016</b>	
Field DJ		Formation Name/Type Shale		Deviation deg		Bit Size 7.9 in		Well MD 1512.0 ft	
County Weld		State/Province Colorado		BHP psi		BHST 90 degF		BHCT 80 degF	
Well Master 0630136796		API/UWI 51231987						Pore Press. Gradient lb/gal	
Rig Name Concord #4		Drilled For N/A		Service Via Land		Casing/ Liner			
						Depth, ft		Size, in	
						Weight, lb/ft		Grade	
						Thread			
Offshore Zone		Well Class Old		Well Type Workover		891.0		8.6	
						1512.0		4.5	
						24.0		J55	
						11.6		M80	
Drilling Fluid Type Other		Max. Density 8.30 lb/gal		Plastic Viscosity cP		Tubing/Drill Pipe			
						T/D		Depth, ft	
						Size, in		Weight, lb/ft	
						Grade		Thread	
Service Line Cementing		Job Type Stub Plug				T		<b>1512.0</b>	
						0.0		0.0	
Max. Allowed Tub. Press 1000 psi		Max. Allowed Ann. Press psi		WH Connection 2 3/8" 4.7# T/S		Perforations/Open Hole			
						Top, ft		Bottom, ft	
						shot/ft		No. of Shots	
						ft		ft	
						ft		ft	
						ft		ft	
						Treat Down Tubing		Displacement 1.0 bbl	
						Packer Type		Packer Depth ft	
						Tubing Vol. 5.8 bbl		Casing Vol. bbl	
						Annular Vol. bbl		Openhole Vol. bbl	
Casing/Tubing Secured <input checked="" type="checkbox"/>		1 Hole Vol. Circulated prior to Cement <input checked="" type="checkbox"/>				Casing Tools		Squeeze Job	
Lift Pressure psi						Shoe Type		Squeeze Type	
Pipe Rotated <input type="checkbox"/>		Pipe Reciprocated <input type="checkbox"/>				Shoe Depth ft		Tool Type	
No. Centralizers		Top Plugs		Bottom Plugs		Stage Tool Type		Tool Depth ft	
Cement Head Type						Stage Tool Depth ft		Tail Pipe Size in	
Job Scheduled For Dec/06/2016 07:00		Arrived on Location Dec/06/2016 07:00		Leave Location Dec/06/2016 09:30		Collar Type		Tail Pipe Depth ft	
						Collar Depth ft		Sqz. Total Vol. bbl	
Date	Time 24-hr clock	Treating Pressure PSI	Flow Rate B/M	Density LB/G	Stg Volume BBL	Message			
12/06/2016	08:21:40	992	0.0	8.35	0.0	Started Acquisition			
12/06/2016	08:21:43	988	0.0	8.35	0.0	Start Job			
12/06/2016	08:21:56	970	0.0	8.35	0.0	Establish Circulation			
12/06/2016	08:23:53	2325	0.0	8.38	2.0	Pressure Test Lines			
12/06/2016	08:24:16	828	0.0	8.38	2.0	Bleed Pressure			
12/06/2016	08:24:23	796	0.0	8.38	2.0	Reset Total, Vol = 1.97 bbl			
12/06/2016	08:24:42	764	0.0	8.38	0.0	15bbl Chem Wash			
12/06/2016	08:26:40	791	3.5	8.38	4.2				
12/06/2016	08:30:12	333	0.0	8.38	15.0	End Chem Wash			
12/06/2016	08:30:32	260	0.0	8.38	15.0	Reset Total, Vol = 15.01 bbl			
12/06/2016	08:30:36	251	0.0	8.38	0.0	Start Cement Slurry			
12/06/2016	08:31:40	127	0.0	8.37	0.0				
12/06/2016	08:36:40	443	3.5	15.57	8.8				
12/06/2016	08:41:40	571	3.4	15.62	25.9				
12/06/2016	08:46:40	768	3.5	15.58	38.8				
12/06/2016	08:51:40	773	3.4	15.66	56.1				
12/06/2016	08:57:25	63	0.0	12.57	71.8	End Cement Slurry 67.5			
12/06/2016	08:57:35	63	0.0	12.21	0.0	Start Displacement			
12/06/2016	08:59:09	77	0.0	8.41	1.4	End Displacement 1bbl			

<b>Well</b> Ale Partnership Fed. W9-10DI	<b>Field</b> DJ	<b>Job Start</b> Dec/06/2016	<b>Customer</b> Anadarko	<b>Job Number</b> DA6T-00165
---	--------------------	---------------------------------	-----------------------------	---------------------------------

Post Job Summary

Average Pump Rates, bbl/min					Volume of Fluid Injected, bbl			
Slurry 3.2	N2	Mud	Maximum Rate 4.8		Total Slurry 67.5	Mud 0.0	Spacer 17.0	N2
Treating Pressure Summary, psi					Breakdown Fluid			
Maximum 970	Final 77	Average 564	Bump Plug to	Breakdown	Type	Volume bbl		Density lb/gal
Avg. N2 Percent %	Designed Slurry Volume 67.5 bbl	Displacement 1.0 bbl	Mix Water Temp 53 degF	Cement Circulated to Surface? <input type="checkbox"/>		Volume bbl		
				Washed Thru Perfs <input type="checkbox"/>		To ft		
Customer or Authorized Representative Socorro Olivas			Schlumberger Supervisor Chris Valerio			Circulation Lost <input type="checkbox"/>		Job Completed <input checked="" type="checkbox"/>
						-		-