

Reclamation Inspection

01/12/2017

Operator: Whiting

Location ID: 431782

Weld County, CO

NESW Section 27 T10N R58W

Aaron Trujillo

Reclamation Specialist

COGCC



COLORADO

Department of Natural Resources



Figure 1: Photo taken from the south end of the location, facing west. Photo shows interim and production areas.



01.12.2017 11:05

Figure 2: Photo taken from the south end of the location, facing northwest. Photo shows interim and production areas. Photo shows the 4 pump jacks/wells on location.



Figure 3: Photo taken from the south end of the location, facing north. Photo shows interim and production areas.



Figure 4: Photo taken from the south end of the location, facing north. Photo shows low point on the south end designed to allow stormwater to travel off location to ditch. Note sediment deposits from stormwater erosion.



Figure 5: Photo taken from the south end of the location, facing south. Photo shows low point in interim left as a stormwater outlet from the production area.



Figure 6: Photo taken from the south end of the interim area. Facing south. Photo shows stormwater erosion concerns forming on the interim area.



Figure 7: Photo taken from the southeast end of the interim area. Photo shows pipe riser remaining on the interim area. Equipment needs to be removed.



Figure 8: Photo taken from the north end of the location, facing north. Photo shows two vertical heater treaters and vertical gas separators.



Figure 9: Photo taken from the northend of the location, facing north. Photo shows unlabeled soil stockpile on location. No stormwater BMPs in place.



Figure 10: Photo taken from the northeast end of the production area, facing north. Photo shows field flare.



Figure 11: Photo taken from the north end of the location, facing southwest. Photo shows 8, 400 bbl produced water tanks.



Figure 12: Photo taken from the north end of the location, facing south. Photo shows 12, 400 bbl crude oil tanks.



Figure 13: Photo taken from the west end of the location. Photo shows trash, debris and equipment being stored behind buildings on the west end of the location and need to be removed.



Figure 14: Photo taken from the west end of the location. Photo shows trash, debris and equipment being stored behind buildings on the west end of the location and need to be removed.



Figure 15: Photo taken from the west end of the location, west northwest. Photo shows building and facilities on location.



Figure 16: Photo taken from the southwest end of the location, facing west. Photo shows electrical equipment on the location



Figure 17: 2013 Google Earth imagery. Yellow polygon represents the current perimeter of the production area (confirmed by GPS on the ground). Current size of production area is 3.46 acres.

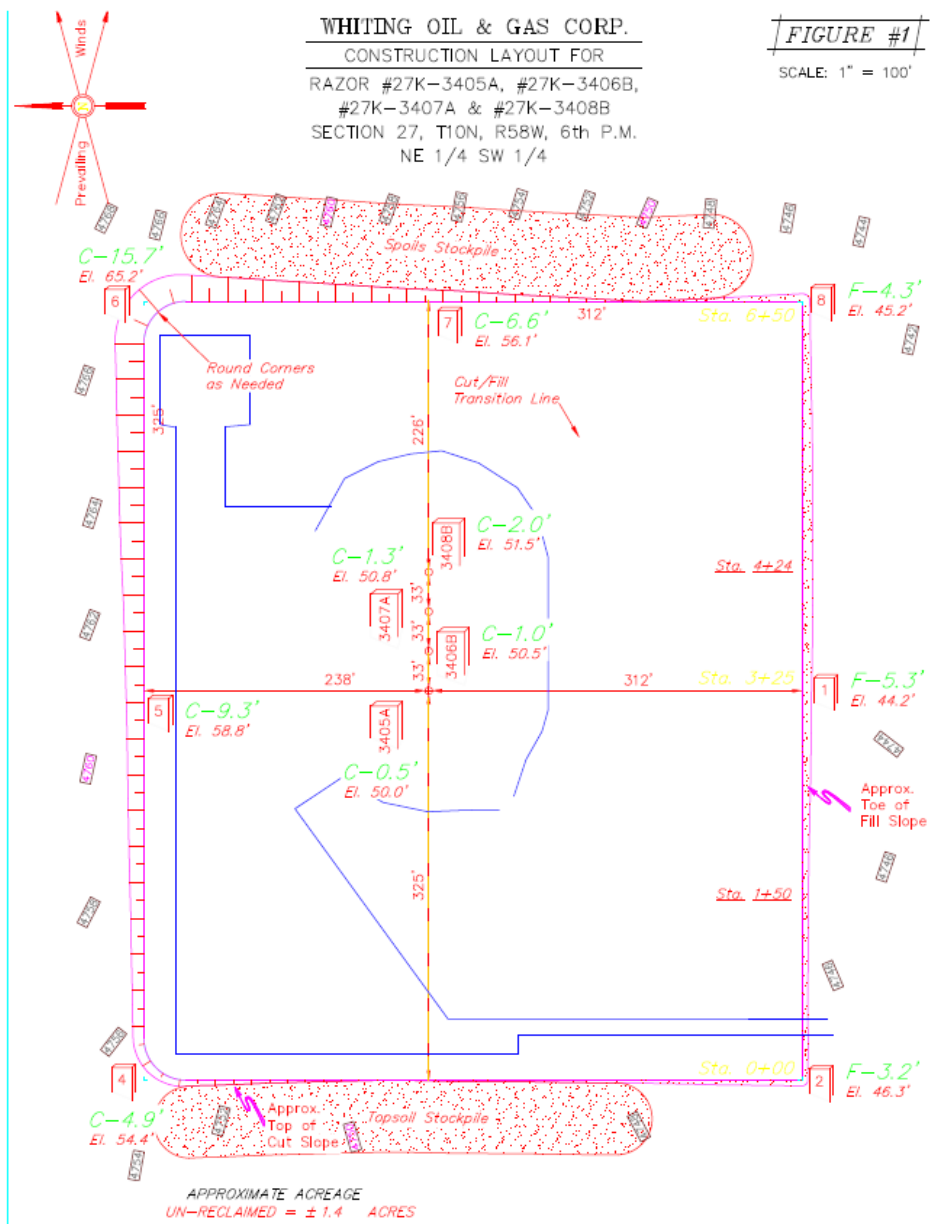


Figure 18: Clip of page 14 of Whiting's Reclamation Plan (Doc. #401018121). According to the reclamation plan, size of the location post IR was to be 1.4 acres in size. Also, note that the only facilities show to be on the location according to this plan are the 4 pump jacks/wells.