

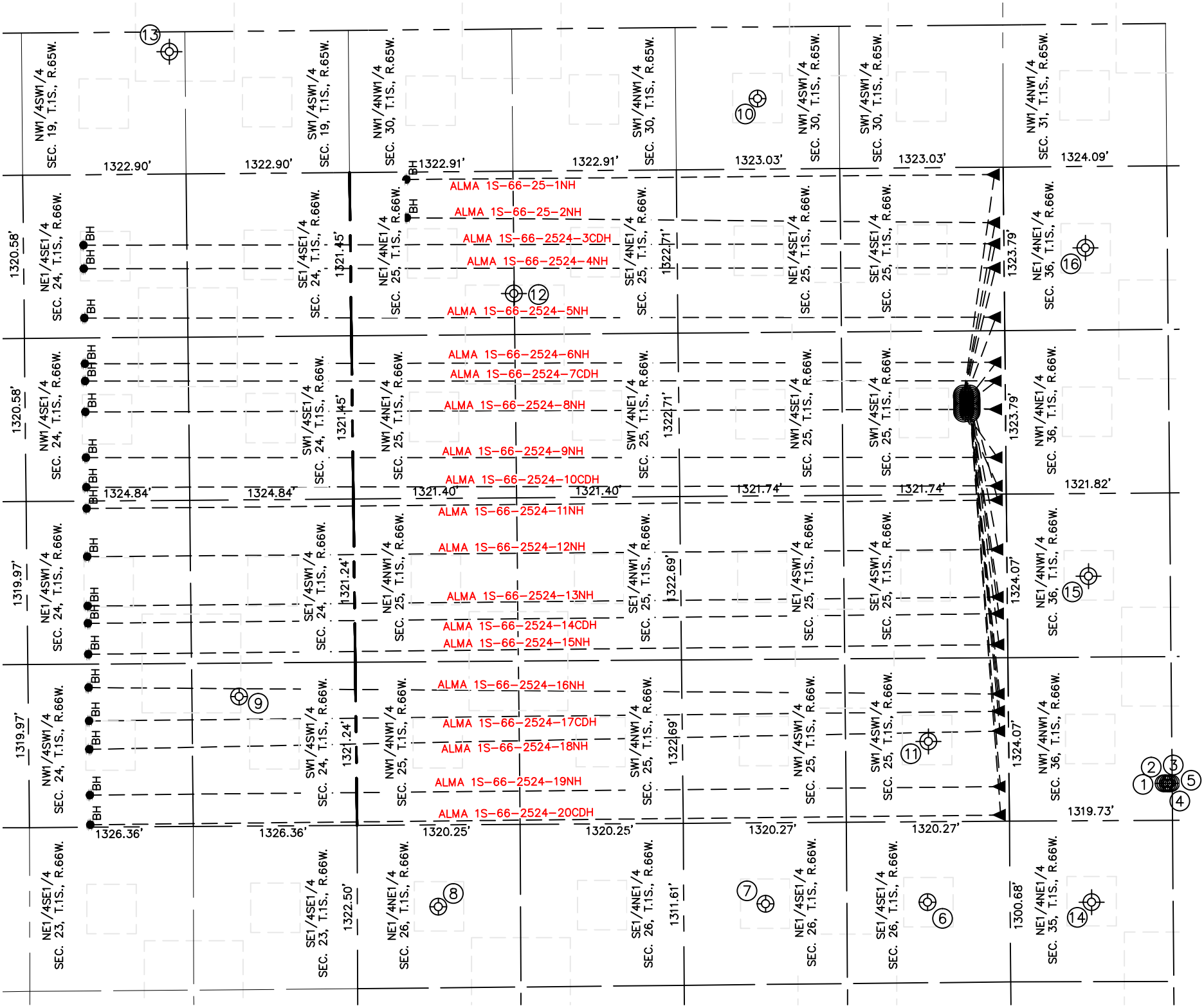


Lat40°, Inc. 6250 W. 10th Street, Unit 2, Greeley, CO 970-515-5294

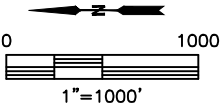
OFFSET WELL EXHIBIT

ALMA 1S-66-2524 PAD

SECTION: 25
TOWNSHIP: 1S
RANGE: 66W
6TH. P.M.
ADAMS COUNTY, CO



- LEGEND
- = SURFACE HOLE LOCATION (SHL)
 - ▲ = ENTRY POINT LOCATION (EP)
 - _{BH} = BOTTOM HOLE LOCATION (BHL)
 - ⊙ = EXISTING WELL
 - ⊙ = ABANDONED WELL





Lat40°, Inc. 6250 W. 10th Street, Unit 2, Greeley, CO 970-515-5294

OFFSET WELL EXHIBIT
ALMA 1S-66-2524 PAD

SECTION: 25
TOWNSHIP: 1S
RANGE: 66W
6TH. P.M.
ADAMS COUNTY, CO

WELL NO.	WELL NAME	SHL FOOTAGE				SHL LAT°	SHL LONG°	PDOP	ELEV (FT.)	1/4/1/4
1	STATE OF CO 1S-66-36-0108BH	1252	FNL	299	FWL	39.92540	-104.73241	2.5	5182	NWNW
2	STATE OF CO 1S-66-36-0108CH	1267	FNL	299	FWL	39.92536	-104.73241	3.1	5181	NWNW
3	STATE OF CO 1-66-36-1609CDH	1283	FNL	299	FWL	39.92532	-104.73241	2.4	5181	NWNW
4	STATE OF CO 1S-66-36-1609BH	1298	FNL	299	FWL	39.92528	-104.73241	2.0	5181	NWNW
5	STATE OF CO 1S-66-36-1609CH	1313	FNL	299	FWL	39.92524	-104.73241	3.1	5181	NWNW
6	MAUL 44-26	667	FSL	652	FEL	39.93067	-104.73578	1.6	5143	SESE
7	MAUL 43-26	1979	FSL	656	FEL	39.93427	-104.73579	1.6	5133	NESE
8	MAUL 41-26	656	FNL	663	FEL	39.94154	-104.73579	1.9	5126	NENE
9	D G H L 1	942	FSL	1050	FWL	39.94593	-104.72967	2.3	5128	SWSW
10	WENZEL 13-30	1986	FSL	571	FWL	39.93429	-104.71255	2.3	5186	NWSW
11	CHAMPLIN 117 AMOCO 1	650	FSL	650	FWL	39.93061	-104.73105	N/A	5145	SWSW
12	HSR-PICCADILLY 8-25	1320	FNL	990	FEL	39.93969	-104.71815	N/A	5164	SENE
13	UPRR-LETTERLY 1	1450	FSL	990	FWL	39.94715	-104.71126	N/A	5130	NWSW
14	BOX ELDER FARMS 41-35 5	660	FNL	660	FEL	39.92687	-104.73588	N/A	5176	NENE
15	CO STATE A 21-36	660	FNL	1980	FWL	39.92705	-104.72640	N/A	5160	NENW
16	CO STATE A 41-36	660	FNL	660	FEL	39.92706	-104.71696	N/A	5193	NENE

NOTE: THE ABANDONED WELL DATA SHOWN IN RED ABOVE WAS OBTAINED FROM COGCC SCOUT CARDS.