



Lat40°, Inc. 6250 W. 10th Street, Unit 2, Greeley, CO 970-515-5294

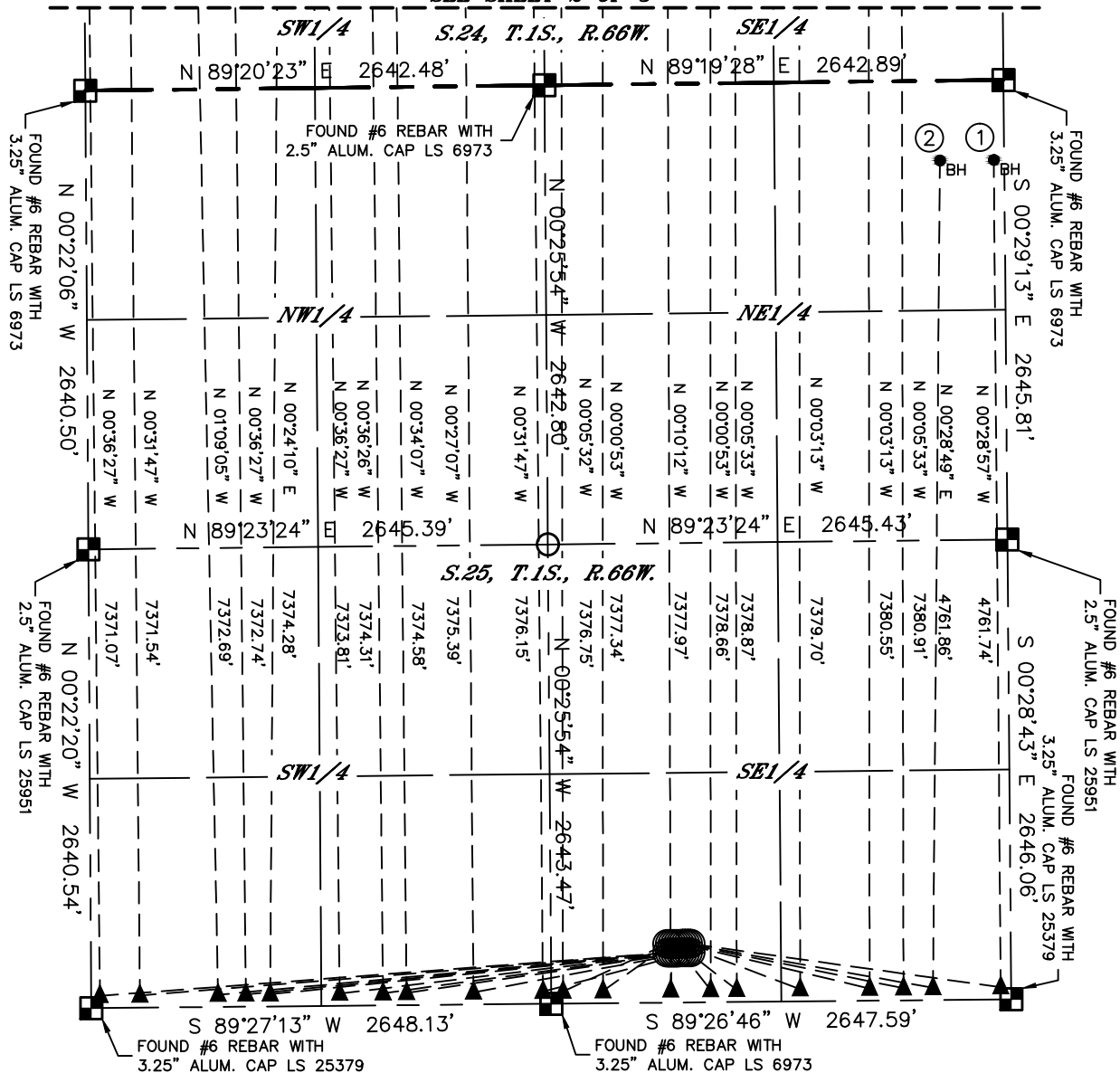
# MULTI-WELL PLAN

ALMA 1S-66-2524 PAD

SECTION: 25  
TOWNSHIP: 1S  
RANGE: 66W  
6TH. P.M.  
ADAMS COUNTY, CO

THIS MAP DOES NOT REPRESENT A BOUNDARY SURVEY

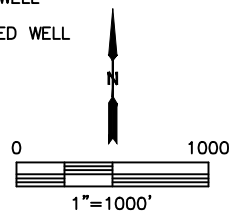
SEE SHEET 2 OF 3



#	WELL NAME	BHL FOOTAGE	BHL LAT °	BHL LONG °	BHL S-T-R
1	ALMA 1S-66-25-1NH	60	FEL	460	FNL 39.94211 -104.71479 25-1S-66
2	ALMA 1S-66-25-2NH	370	FEL	460	FNL 39.94211 -104.71590 25-1S-66
3	ALMA 1S-66-2524-3CDH	570	FEL	2160	FSL 39.94930 -104.71661 24-1S-66
4	ALMA 1S-66-2524-4NH	760	FEL	2160	FSL 39.94930 -104.71728 24-1S-66
5	ALMA 1S-66-2524-5NH	1160	FEL	2160	FSL 39.94929 -104.71871 24-1S-66
6	ALMA 1S-66-2524-6NH	1530	FEL	2160	FSL 39.94929 -104.72003 24-1S-66
7	ALMA 1S-66-2524-7CDH	1670	FEL	2160	FSL 39.94929 -104.72053 24-1S-66
8	ALMA 1S-66-2524-8NH	1920	FEL	2160	FSL 39.94929 -104.72142 24-1S-66
9	ALMA 1S-66-2524-9NH	2290	FEL	2160	FSL 39.94928 -104.72274 24-1S-66
10	ALMA 1S-66-2524-10CDH	2530	FEL	2160	FSL 39.94928 -104.72360 24-1S-66
11	ALMA 1S-66-2524-11NH	2580	FWL	2160	FSL 39.94928 -104.72421 24-1S-66
12	ALMA 1S-66-2524-12NH	2190	FWL	2160	FSL 39.94928 -104.72560 24-1S-66
13	ALMA 1S-66-2524-13NH	1790	FWL	2160	FSL 39.94928 -104.72703 24-1S-66
14	ALMA 1S-66-2524-14CDH	1650	FWL	2160	FSL 39.94927 -104.72752 24-1S-66
15	ALMA 1S-66-2524-15NH	1400	FWL	2160	FSL 39.94927 -104.72842 24-1S-66
16	ALMA 1S-66-2524-16NH	1130	FWL	2160	FSL 39.94927 -104.72938 24-1S-66
17	ALMA 1S-66-2524-17CDH	860	FWL	2160	FSL 39.94927 -104.73034 24-1S-66
18	ALMA 1S-66-2524-18NH	630	FWL	2160	FSL 39.94927 -104.73116 24-1S-66
19	ALMA 1S-66-2524-19NH	260	FWL	2160	FSL 39.94926 -104.73248 24-1S-66
20	ALMA 1S-66-2524-20CDH	20	FWL	2160	FSL 39.94926 -104.73334 24-1S-66

## LEGEND

- = ALIQUOT MONUMENT AS DESCRIBED
- = CALCULATED POSITION
- = SURFACE HOLE LOCATION (SHL)
- ▲ = ENTRY POINT LOCATION (EP)
- <sub>BH</sub> = BOTTOM HOLE LOCATION (BHL)
- ⊙ = EXISTING WELL
- ⊙ = ABANDONED WELL



SHEET 1 OF 3

DATE: 12/13/2016  
PROJECT#: 2016052

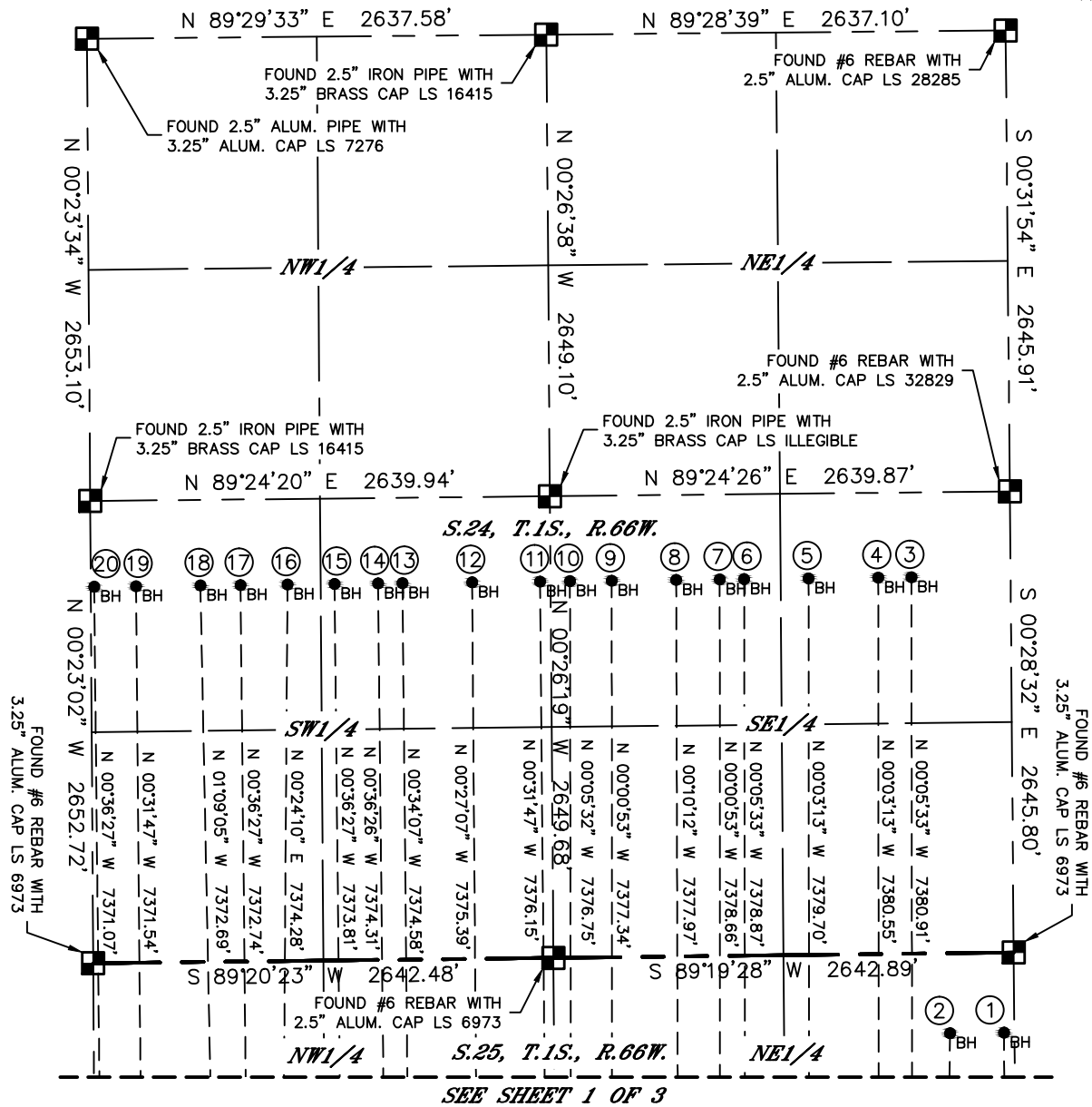


Lat40°, Inc. 6250 W. 10th Street, Unit 2, Greeley, CO 970-515-5294

# MULTI-WELL PLAN

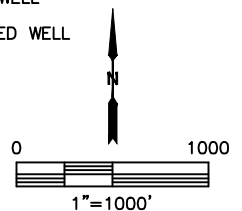
ALMA 1S-66-2524 PAD

SECTION: 25  
TOWNSHIP: 1S  
RANGE: 66W  
6TH. P.M.  
ADAMS COUNTY, CO



#	WELL NAME	BHL FOOTAGE	BHL LAT °	BHL LONG °	BHL S-T-R
1	ALMA 1S-66-25-1NH	60	FEL	460	FNL 39.94211 -104.71479 25-1S-66
2	ALMA 1S-66-25-2NH	370	FEL	460	FNL 39.94211 -104.71590 25-1S-66
3	ALMA 1S-66-2524-3CDH	570	FEL	2160	FSL 39.94930 -104.71661 24-1S-66
4	ALMA 1S-66-2524-4NH	760	FEL	2160	FSL 39.94930 -104.71728 24-1S-66
5	ALMA 1S-66-2524-5NH	1160	FEL	2160	FSL 39.94929 -104.71871 24-1S-66
6	ALMA 1S-66-2524-6NH	1530	FEL	2160	FSL 39.94929 -104.72003 24-1S-66
7	ALMA 1S-66-2524-7CDH	1670	FEL	2160	FSL 39.94929 -104.72053 24-1S-66
8	ALMA 1S-66-2524-8NH	1920	FEL	2160	FSL 39.94929 -104.72142 24-1S-66
9	ALMA 1S-66-2524-9NH	2290	FEL	2160	FSL 39.94928 -104.72274 24-1S-66
10	ALMA 1S-66-2524-10CDH	2530	FEL	2160	FSL 39.94928 -104.72360 24-1S-66
11	ALMA 1S-66-2524-11NH	2580	FWL	2160	FSL 39.94928 -104.72421 24-1S-66
12	ALMA 1S-66-2524-12NH	2190	FWL	2160	FSL 39.94928 -104.72560 24-1S-66
13	ALMA 1S-66-2524-13NH	1790	FWL	2160	FSL 39.94928 -104.72703 24-1S-66
14	ALMA 1S-66-2524-14CDH	1650	FWL	2160	FSL 39.94927 -104.72752 24-1S-66
15	ALMA 1S-66-2524-15NH	1400	FWL	2160	FSL 39.94927 -104.72842 24-1S-66
16	ALMA 1S-66-2524-16NH	1130	FWL	2160	FSL 39.94927 -104.72938 24-1S-66
17	ALMA 1S-66-2524-17CDH	860	FWL	2160	FSL 39.94927 -104.73034 24-1S-66
18	ALMA 1S-66-2524-18NH	630	FWL	2160	FSL 39.94927 -104.73116 24-1S-66
19	ALMA 1S-66-2524-19NH	260	FWL	2160	FSL 39.94926 -104.73248 24-1S-66
20	ALMA 1S-66-2524-20CDH	20	FWL	2160	FSL 39.94926 -104.73334 24-1S-66

- LEGEND
- = ALIQUOT MONUMENT AS DESCRIBED
  - = CALCULATED POSITION
  - = SURFACE HOLE LOCATION (SHL)
  - ▲ = ENTRY POINT LOCATION (EP)
  - = BOTTOM HOLE LOCATION (BHL)
  - ⊙ = EXISTING WELL
  - ⊙ = ABANDONED WELL



SHEET 2 OF 3

DATE: 12/13/2016  
PROJECT#: 2016052



Lat40°, Inc. 6250 W. 10th Street, Unit 2, Greeley, CO 970-515-5294

# MULTI-WELL PLAN

ALMA 1S-66-2524 PAD

SECTION: 25  
TOWNSHIP: 1S  
RANGE: 66W  
6TH. P.M.  
ADAMS COUNTY, CO

