



Lat40°, Inc. 6250 W. 10th Street, Unit 2, Greeley, CO 970-515-5294

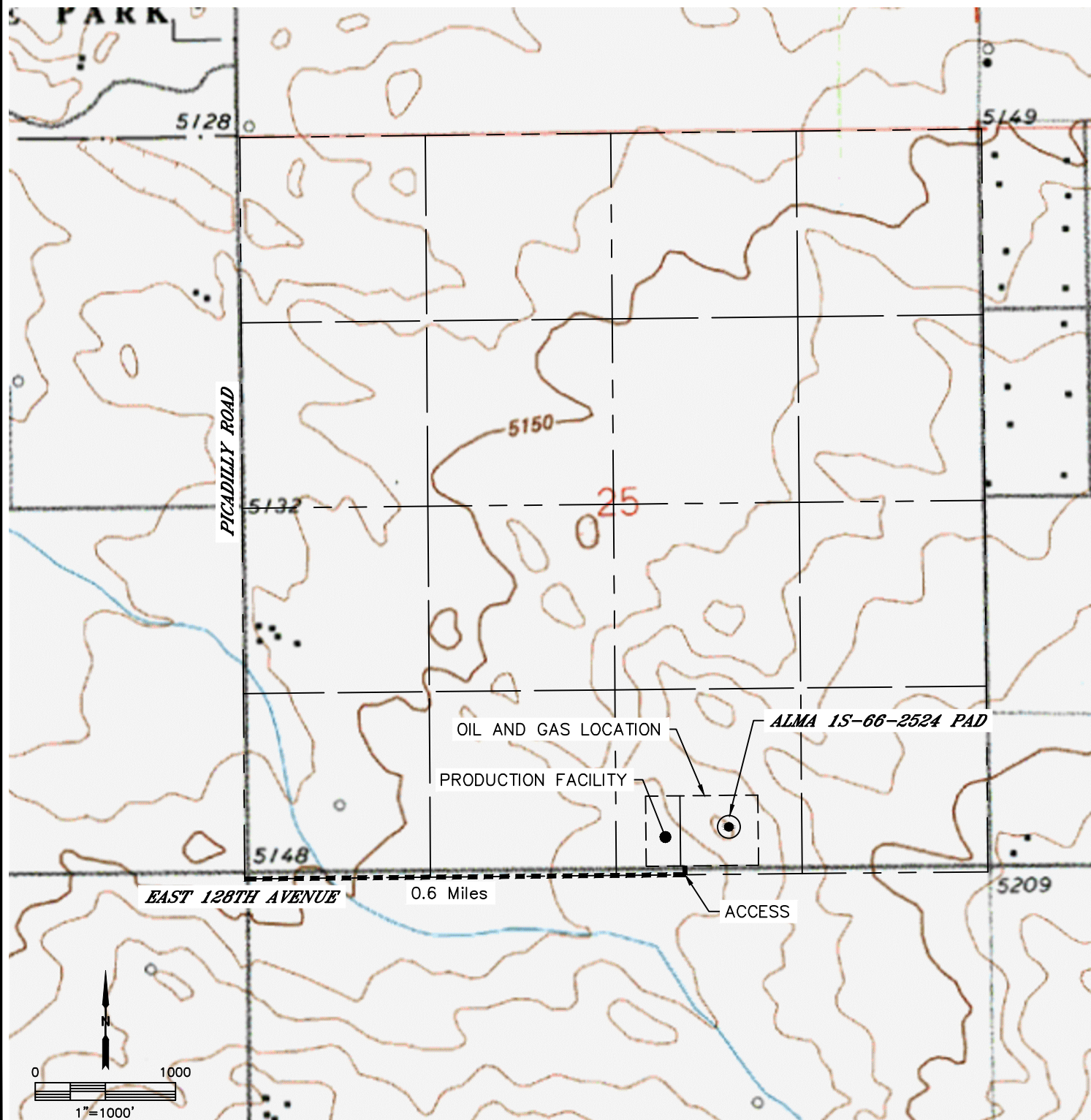
## ACCESS ROAD MAP

**ALMA 1S-66-2524 PAD**

SECTION: 25  
TOWNSHIP: 1S  
RANGE: 66W  
6TH. P.M.  
ADAMS COUNTY, CO

### DRIVING DIRECTIONS TO ALMA 1S-66-2524 PAD

FROM THE INTERSECTION OF EAST 128TH AVENUE AND PICADILLY ROAD GO EAST ALONG EAST 128TH AVENUE FOR 0.6 MILES TO A PROPOSED ACCESS TO THE NORTH. GO NORTH DIRECTLY INTO THE PROPOSED WELL PAD AND PRODUCTION FACILITY.





Lat40°, Inc. 6250 W. 10th Street, Unit 2, Greeley, CO 970-515-5294

# ACCESS ROAD MAP

ALMA 1S-66-2524 PAD

SECTION: 25  
TOWNSHIP: 1S  
RANGE: 66W  
6TH. P.M.  
ADAMS COUNTY, CO

