

1801 Broadway  
Suite 500  
Denver, Colorado 80202



Allison Linz  
Regulatory Technician  
Tel: 303.398.0355  
E-mail:  
regulatorypermitting@gwogco.com

July 27, 2016

Colorado Oil and Gas Conservation Commission  
1120 Lincoln Street, Suite 801  
Denver, Colorado 80203

RE: **Proposed Wellbore Spacing Unit**  
HDI FK 03-234HN  
Niobrara New Drill

SESE Section 10  
Township 1N, Range 65W, 6th P.M.  
Weld County, Colorado

Dear Director:

Great Western Operating Company, LLC is planning to drill the above captioned well in accordance with the provisions of COGCC Rule 318A.e.

Great Western proposed wellbore spacing unit consists of:

- **1N-65W-Sec 3:SE**
- **1N-65W-Sec 10: E2**
- **480 Acres**

The 30 day notification time period has passed and we have not received any objections to such well locations or proposed spacing unit, therefore Great Western hereby requests the Director to approve the above mentioned well. Great Western Operating Company, LLC respectfully requests that the COGCC review the enclosed map illustrating the proposed wellbore spacing unit.

Respectfully,

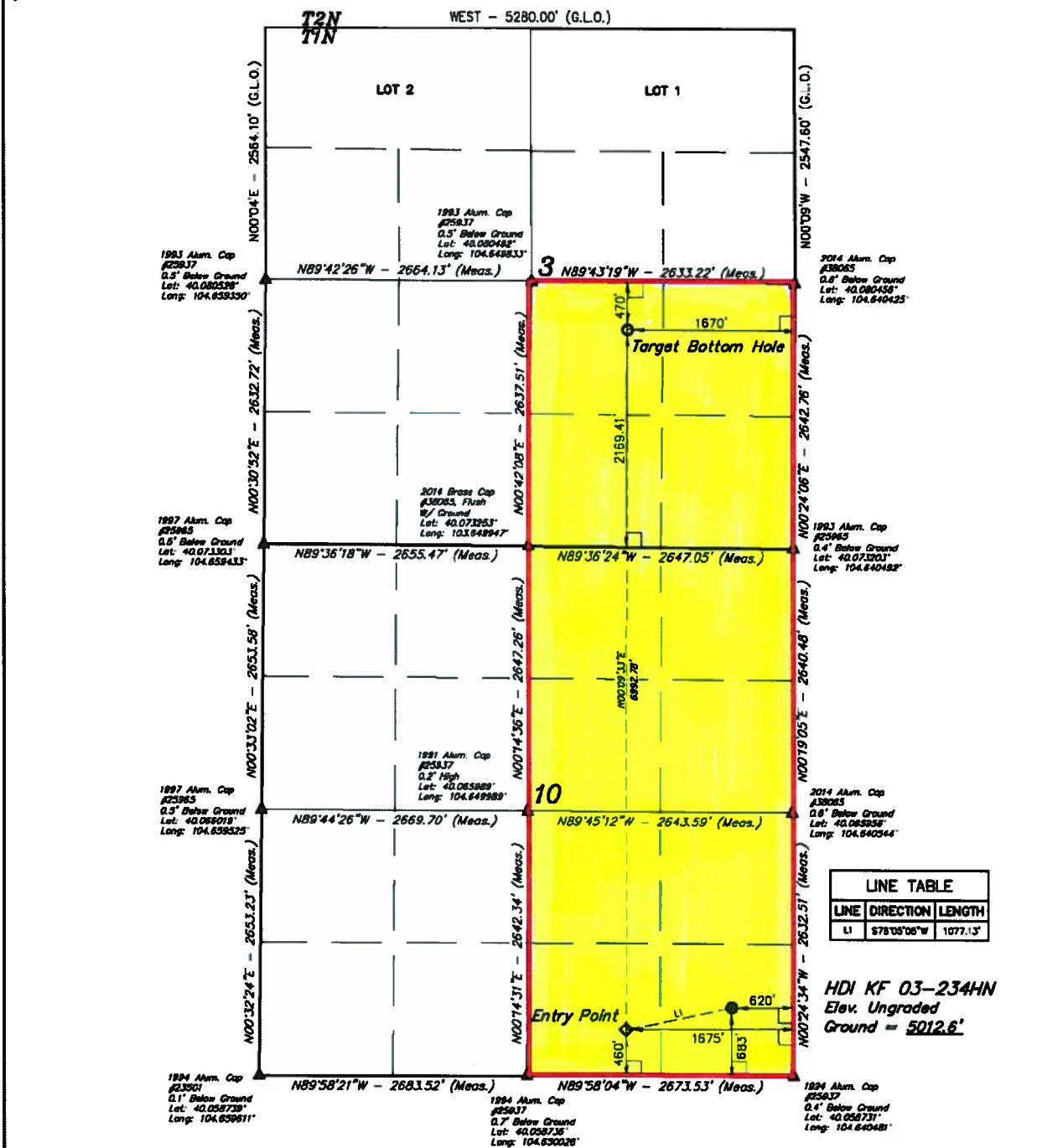
*Allison Linz*

Allison Linz  
Regulatory Technician  
Great Western Operating Company, LLC

# LEGEND:

- 90° SYMBOL
- PROPOSED WELLHEAD
- TARGET BOTTOM HOLE
- ▲ SECTION CORNERS LOCATED (NAD 83)
- ◆ ENTRY POINT

T1N, R65W, 6th P.M.



LINE TABLE		
LINE	DIRECTION	LENGTH
L1	S78°05'06\"W	1077.13'

HDI KF 03-234HN  
Elev. Ungraded  
Ground = 5012.6'



NAD 83 (TARGET BOTTOM HOLE)	NAD 83 (ENTRY POINT)	NAD 83 (WELLFACE LOCATION)
LATITUDE - 40°04'43.88\" (40.0791189)	LATITUDE - 40°03'33.59\" (40.059997)	LATITUDE - 40°03'38.19\" (40.060608)
LONGITUDE - 104°38'47.05\" (104.646403)	LONGITUDE - 104°38'47.39\" (104.646472)	LONGITUDE - 104°38'31.75\" (104.642785)
NAD 27 (TARGET BOTTOM HOLE)	NAD 27 (ENTRY POINT)	NAD 27 (WELLFACE LOCATION)
LATITUDE - 40°04'43.14\" (40.079286)	LATITUDE - 40°03'34.05\" (40.060014)	LATITUDE - 40°03'38.23\" (40.060625)
LONGITUDE - 104°38'45.18\" (104.645883)	LONGITUDE - 104°38'45.43\" (104.645953)	LONGITUDE - 104°38'31.89\" (104.642189)

**BASES OF BEARINGS**  
BASES OF BEARINGS IS A C.F.S. OBSERVATION  
**BASES OF ELEVATION**  
USGS COOPERATION BASE NETWORK CONTROL ELEVATION DESIGNATION "HUDSON CO."  
NAD DATA SHEET LISTS THE NAD83 ELEVATION AS 8220.499 FEET.

CERTIFICATE  
THIS IS TO CERTIFY THAT THE ABOVE IS A TRUE AND CORRECT COPY OF THE NOTES OF ACTUAL SURVEYS MADE BY ME, AND UNDER MY SUPERVISION, AND THAT THE SAME ARE TRUE AND CORRECT TO THE BEST OF MY KNOWLEDGE AND BELIEF.

*[Signature]*  
REGISTERED LAND SURVEYOR  
NO. 10000  
STATE OF COLORADO

REV: 2 04-12-16 C.C. (SHL CHANGE)

## GREAT WESTERN OPERATING COMPANY

HDI KF 03-234HN  
SE 1/4 SE 1/4, SECTION 10, T1N, R65W, 6th P.M.  
WELD COUNTY, COLORADO

SURVEYED BY	DATE
DALLAS NELSON, C.M.	02-17-16
DRAWN BY	DATE
I.C.B.	02-24-16
SCALE	1\" = 1000'

**WELL LOCATION PLAT**



**UELS, LLC**  
Corporate Office • 85 South 200 East  
Vernal, UT 84078 • (435) 789-1817

