

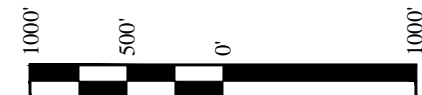
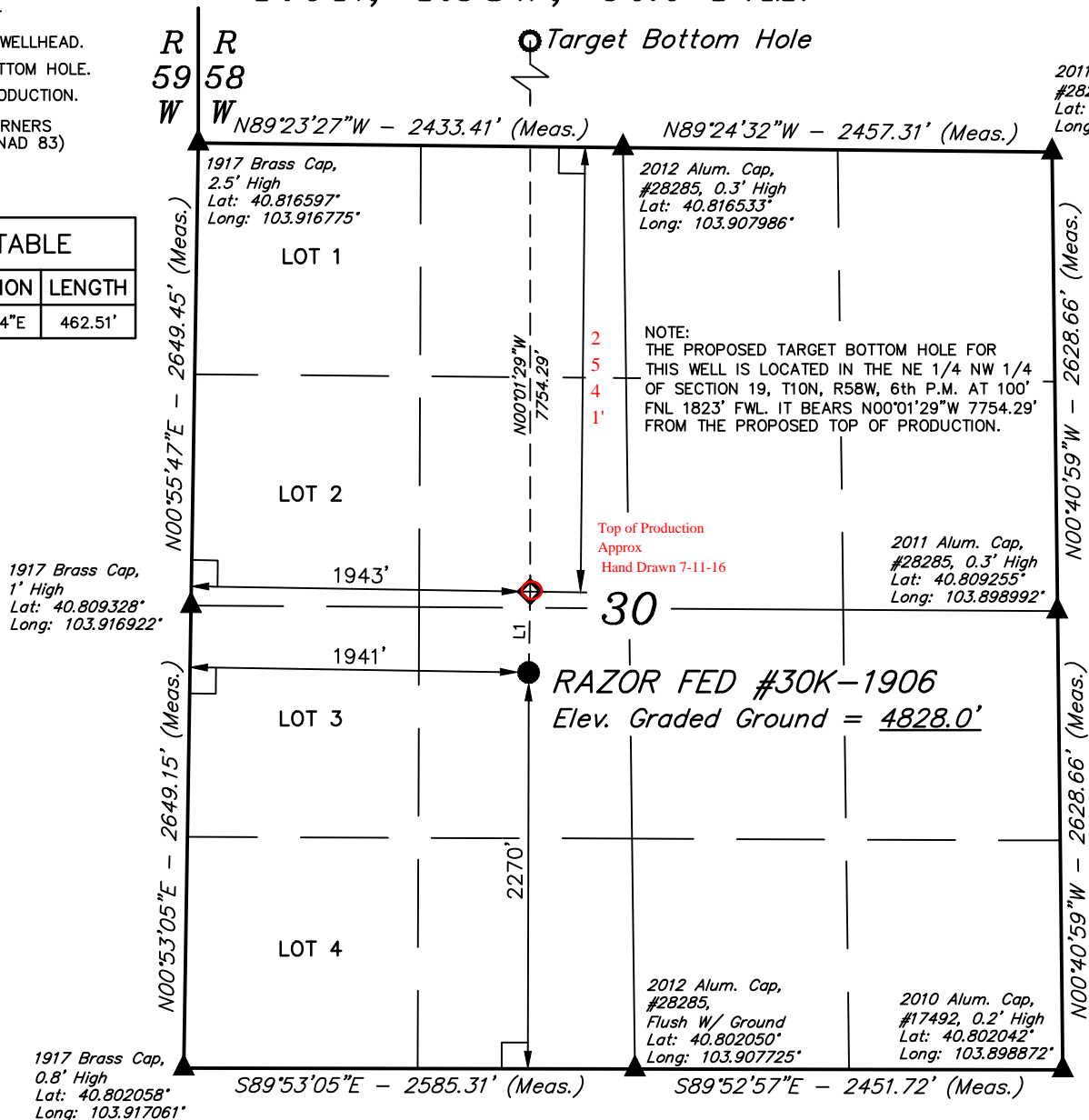
LEGEND:

- = 90° SYMBOL
- = PROPOSED WELLHEAD.
- = TARGET BOTTOM HOLE.
- = TOP OF PRODUCTION.
- = SECTION CORNERS LOCATED. (NAD 83)

LINE TABLE

LINE	DIRECTION	LENGTH
L1	N01°10'44"E	462.51'

T10N, R58W, 6th P.M.



NAD 83 (TOP OF PRODUCTION)	NAD 83 (SURFACE LOCATION)
LATITUDE = 40°48'34.39" (40.809553)	LATITUDE = 40°48'29.82" (40.808283)
LONGITUDE = 103°54'35.64" (103.909900)	LONGITUDE = 103°54'35.76" (103.909933)
NAD 27 (TOP OF PRODUCTION)	NAD 27 (SURFACE LOCATION)
LATITUDE = 40°48'34.43" (40.809564)	LATITUDE = 40°48'29.87" (40.808297)
LONGITUDE = 103°54'33.83" (103.909397)	LONGITUDE = 103°54'33.95" (103.909431)

BASIS OF BEARINGS

BASIS OF BEARINGS IS A G.P.S. OBSERVATION

BASIS OF ELEVATION

SPOT ELEVATION LOCATED AT THE NORTHEAST CORNER OF SECTION 15, T9N, R58W, 6th P.M. TAKEN FROM THE GATEHOOK SPRING, QUADRANGLE, COLORADO, WELD COUNTY, 7.5 MINUTE QUAD (TOPOGRAPHIC MAP) PUBLISHED BY THE UNITED STATES DEPARTMENT OF THE INTERIOR, GEOLOGICAL SURVEY. SAID ELEVATION IS MARKED AS BEING 4679 FEET.



UELS, LLC
Corporate Office * 85 South 200 East
Vernal, UT 84078 * (435) 789-1017



CERTIFICATE
THIS IS TO CERTIFY THAT THE ABOVE PLAT WAS PREPARED FROM FIELD NOTES OF ACTUAL SURVEYS MADE BY ME OR UNDER MY SUPERVISION, AND THAT THE SAME ARE TRUE AND CORRECT TO THE BEST OF MY KNOWLEDGE AND BELIEF.

REGISTERED LAND SURVEYOR
REGISTRATION NO. 28285
STATE OF COLORADO

WHITING OIL & GAS CORP.

RAZOR FED #30K-1906 (SURFACE LOCATION)
NE 1/4 SW 1/4, SECTION 30, T10N, R58W, 6th P.M.
WELD COUNTY, COLORADO

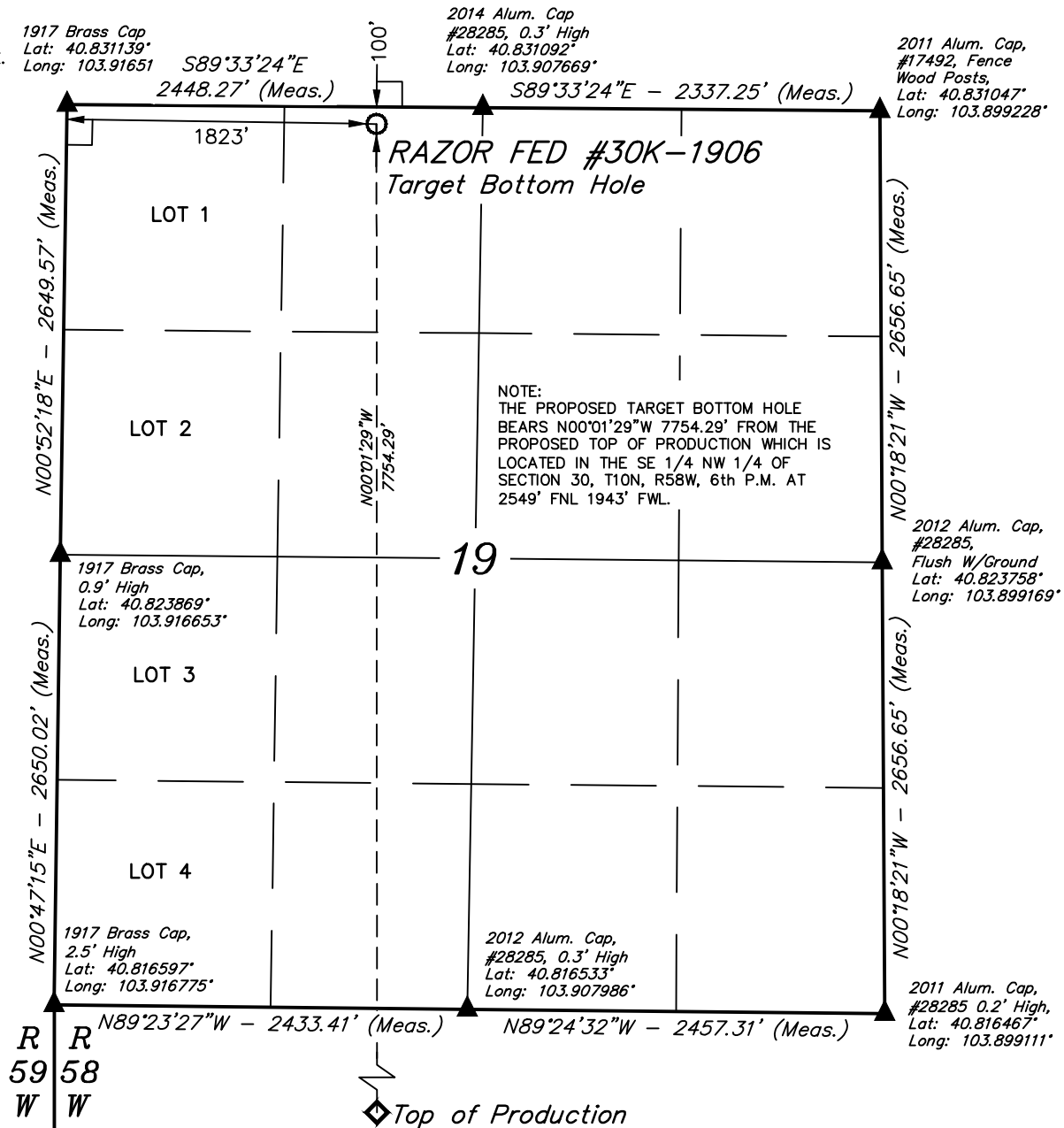
SURVEYED BY: GREG WEIMER, C.J.	DATE: 10-21-15
DRAWN BY: H.K.W.	DATE DRAWN: 01-16-14
SCALE: 1" = 1000'	REVISED: 11-04-15 K.B.
WELL LOCATION PLAT	

LEGEND:

— = 90° SYMBOL

- = PROPOSED WELLHEAD.
 ○ = TARGET BOTTOM HOLE.
 ◆ = TOP OF PRODUCTION.
 ▲ = SECTION CORNERS LOCATED. (NAD 83)

T10N, R58W, 6th P.M.

**CERTIFICATE**

THIS IS TO CERTIFY THAT THE ABOVE PLAT WAS PREPARED FROM FIELD NOTES OF ACTUAL SURVEYS MADE BY ME OR UNDER MY SUPERVISION, AND THAT THE SAME ARE TRUE AND CORRECT TO THE BEST OF MY KNOWLEDGE AND BELIEF.

REGISTERED LAND SURVEYOR
 REGISTRATION NO. 28285
 STATE OF COLORADO

NAD 83 (TARGET BOTTOM HOLE)
LATITUDE = 40°49'50.99" (40.830831)
LONGITUDE = 103°54'35.76" (103.909933)
NAD 27 (TARGET BOTTOM HOLE)
LATITUDE = 40°49'51.04" (40.830844)
LONGITUDE = 103°54'33.95" (103.909431)

**BASIS OF BEARINGS**

BASIS OF BEARINGS IS A G.P.S. OBSERVATION

BASIS OF ELEVATION

SPOT ELEVATION LOCATED AT THE NORTHEAST CORNER OF SECTION 15, T9N, R58W, 6th P.M. TAKEN FROM THE GATEHOOK SPRING, QUADRANGLE, COLORADO, WELD COUNTY, 7.5 MINUTE QUAD (TOPOGRAPHIC MAP) PUBLISHED BY THE UNITED STATES DEPARTMENT OF THE INTERIOR, GEOLOGICAL SURVEY. SAID ELEVATION IS MARKED AS BEING 4679 FEET.

**WHITING OIL & GAS CORP.**

RAZOR FED #30K-1906 (TARGET BOTTOM HOLE)
NE 1/4 NW 1/4, SECTION 19, T10N, R58W, 6th P.M.
WELD COUNTY, COLORADO

SURVEYED BY: GREG WEIMER, C.J.	DATE: 10-21-15
DRAWN BY: H.K.W.	DATE DRAWN: 01-16-14
SCALE: 1" = 1000'	REVISED: 11-04-15 K.B.

WELL LOCATION PLAT

UELS, LLC
 Corporate Office * 85 South 200 East
 Vernal, UT 84078 * (435) 789-1017