

T3N, R68W

NW. COR.
SEC. 33, T3N, R68W
FOUND 3 1/4" ALUM. CAP
L.S. NO. 38285

N. 1/4 COR.
SEC. 33, T3N, R68W
FOUND 3 1/4" ALUM. CAP
L.S. NO. 24307

NE COR.
SEC. 33, T3N, R68W
FOUND 3 1/4" ALUM. CAP
L.S. NO. 34591

W. 1/4 COR.
SEC. 33, T3N, R68W
FOUND 2" ALUM. CAP
L.S. NO. 20673

33

SURFACE LOCATION: NAD 83
GROUND ELEVATION= 4894.3'
LATITUDE= 40.176578°
LONGITUDE= -105.003181°
LATITUDE= 40°10'35.681"
LONGITUDE= -105°00'11.452"
HEEL LOCATION: NAD 83
LATITUDE= 40.175105°
LONGITUDE= -105.001194°
LATITUDE= 40°10'30.377"
LONGITUDE= -105°00'04.299"
BOTTOM HOLE LOCATION: NAD 83
LATITUDE= 40.188279°
LONGITUDE= -105.001281°
LATITUDE= 40°11'17.804"
LONGITUDE= -105°00'04.612"

NEWBY 1N-33HZ
SURFACE LOCATION

SW. COR.
SEC. 33, T3N, R68W
FOUND 2 1/2" ALUM. CAP
L.S. NO. 38285

S. 1/4 COR.
SEC. 33, T3N, R68W
FOUND 2 1/2" ALUM. CAP
L.S. NO. 22573

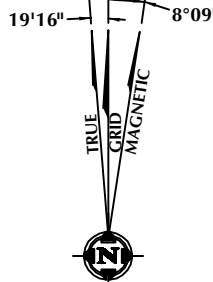
E. 1/4 COR.
SEC. 33, T3N, R68W
FOUND 3 1/4" ALUM. CAP
L.S. NO. 18482

SE. COR.
SEC. 33, T3N, R68W
FOUND 3 1/4" ALUM. CAP
L.S. NO. 18482

W. 1/4 COR.
SEC. 4, T2N, R68W
FOUND 3 1/4" ALUM. CAP
L.S. NO. 38285

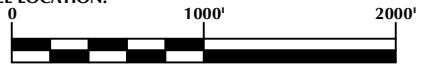
CENTER COR.
SEC. 4, T2N, R68W
FOUND 3 1/4" ALUM. CAP
L.S. NO. 22098

T2N, R68W
4



NOTES:

- ▲ INDICATES SECTION CORNER
- INDICATES CALCULATED CORNER
- ELEVATION BASED ON NAVD88 (GEOID12B)
- BASIS OF BEARING DERIVED FROM COLORADO COORDINATE SYSTEM OF 1983 NORTH ZONE.
- ALL MEASURED DISTANCES ARE GRID.
- COMBINED SCALE FACTOR: .99972556
- OPERATOR: ROB WILSON / PDOP = 1.2
- SEE ADDENDUM TO WELL LOCATION CERTIFICATE FOR EXISTING IMPROVEMENTS WITHIN 500' OF THE WELL PAD.
- WELL FOOTAGES ARE MEASURED AT RIGHT ANGLES TO THE SECTION LINES.
- THE BOTTOM OF HOLE BEARS N00°36'42"W, 4799' FROM THE HEEL LOCATION.



CERTIFICATE OF SURVEYOR:

THIS IS TO CERTIFY THAT THE ABOVE PLAT WAS PREPARED FROM FIELD NOTES OF ACTUAL SURVEY MADE BY ME OR UNDER MY SUPERVISION AND THAT THE SAME ARE TRUE AND CORRECT TO THE BEST OF MY KNOWLEDGE AND BELIEF. THIS CERTIFICATE DOES NOT REPRESENT A LAND SURVEY PLAT OR IMPROVEMENT SURVEY PLAT AS DEFINED BY C.R.S. 38-51-302 AND CANNOT BE RELIED UPON TO DETERMINE OWNERSHIP.

John R. Slaugh
JOHN R. SLAUGH
PROFESSIONAL LAND SURVEYOR
COLORADO REGISTRATION NUMBER 18230

NOTICE:
ACCORDING TO COLORADO STATE LAW YOU MUST COMMENCE ANY LEGAL ACTION BASED UPON ANY DEFECT IN THIS SURVEY WITHIN THREE YEARS AFTER YOU FIRST DISCOVER SUCH DEFECT. IN NO EVENT MAY ANY ACTION BASED UPON ANY DEFECT IN THIS SURVEY BE COMMENCED MORE THAN TEN YEARS FROM THE DATE ON THE CERTIFICATION SHOWN HEREON.

WELL PAD - NEWBY 27N-33HZ

NEWBY 1N-33HZ
WELL LOCATION CERTIFICATE
588' FSL & 1350' FEL SWSE (SURFACE)
47' FSL & 795' FEL SESE (HEEL)
461' FNL & 816' FEL NENE (BOTTOM)
LOCATED IN SECTION 33
T3N, R68W, 6TH P.M.
WELD COUNTY, COLORADO

**Kerr-McGee Oil &
Gas Onshore L.P.**
1099 18th Street
Denver, Colorado 80202



CONSULTING, LLC

SHERIDAN OFFICE
1095 Saberton Avenue
Sheridan, Wyoming 82801
Phone 307-674-0609

LOVELAND OFFICE
1635 Foxtrail Drive, Suite 204
Loveland, Colorado 80538
Phone 970-776-4331

DRAFTED BY:	LMO	CHECKED BY:	JRS
DATE DRAFTED:	1/21/16	DATE SURVEYED:	1/7/16
REVISED:	6/9/16	FILE NAME:	15-65