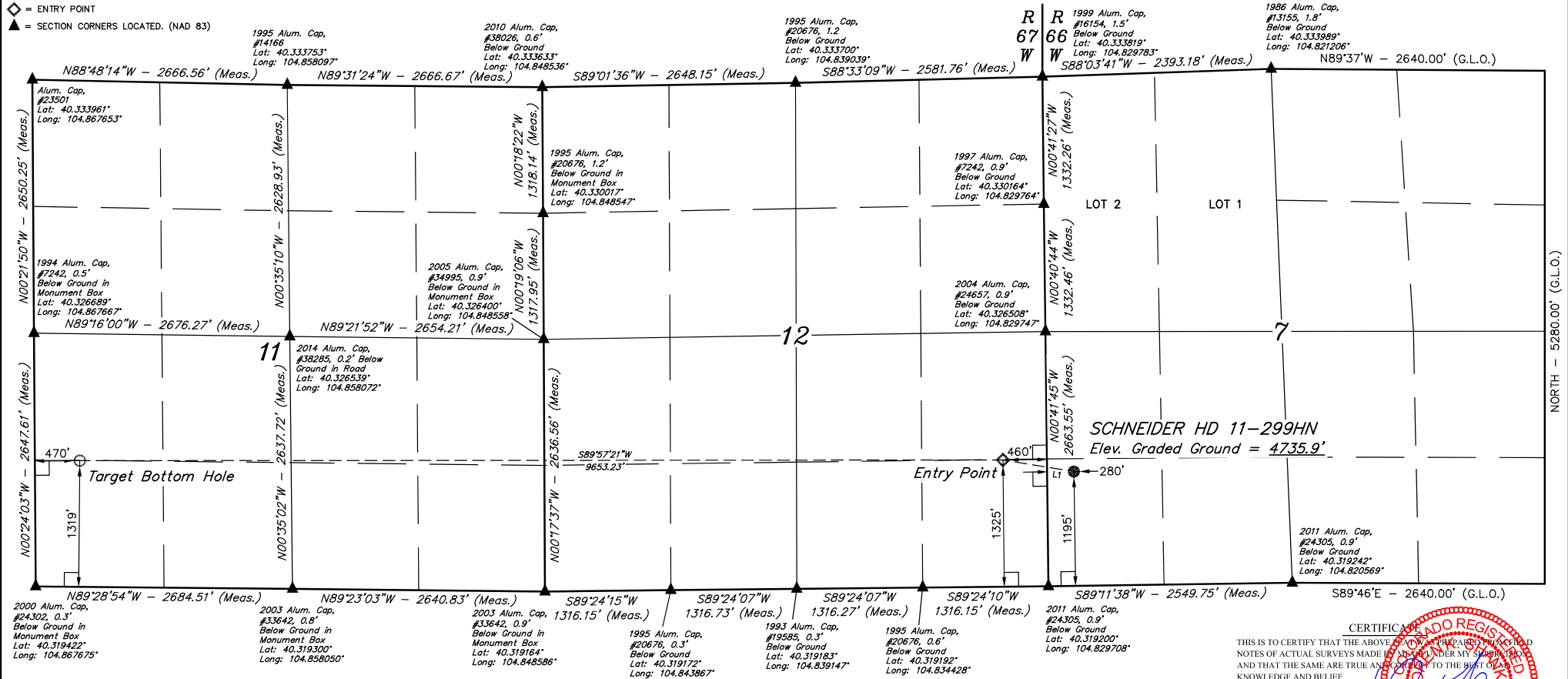


# LEGEND:

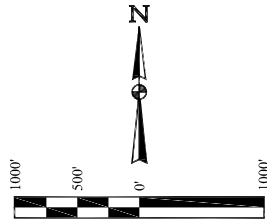
- = 90° SYMBOL
- = PROPOSED WELLHEAD.
- = TARGET BOTTOM HOLE.
- ◆ = ENTRY POINT
- ▲ = SECTION CORNERS LOCATED. (NAD 83)

T4N, R66W, 6th P.M.



**BASIS OF BEARINGS**  
BASIS OF BEARINGS IS A G.P.S. OBSERVATION  
**BASIS OF ELEVATION**  
USGS COOPERATIVE BASE NETWORK CONTROL STATION, DESIGNATION "VERMILYEA". NGS DATA SHEET LISTS THE NAVD 88 ELEVATION AS BEING 5026 FEET.

**UELS, LLC**  
Corporate Office \* 85 South 200 East  
Vernal, UT 84078 \* (435) 789-1017



| LINE TABLE |             |         |
|------------|-------------|---------|
| LINE       | DIRECTION   | LENGTH  |
| L1         | N80°43'50"W | 751.34' |

| NAD 83 (SURFACE LOCATION)              | NAD 83 (ENTRY POINT)                   | NAD 83 (TARGET BOTTOM HOLE)            |
|--|--|--|
| LATITUDE = 40°19'20.94" (40.322483)    | LATITUDE = 40°19'22.20" (40.322833)    | LATITUDE = 40°19'22.88" (40.323022)    |
| LONGITUDE = 104°49'43.40" (104.828722) | LONGITUDE = 104°49'52.96" (104.831378) | LONGITUDE = 104°51'57.55" (104.865986) |
| NAD 27 (SURFACE LOCATION)              | NAD 27 (ENTRY POINT)                   | NAD 27 (TARGET BOTTOM HOLE)            |
| LATITUDE = 40°19'21.00" (40.322500)    | LATITUDE = 40°19'22.26" (40.322850)    | LATITUDE = 40°19'22.94" (40.323039)    |
| LONGITUDE = 104°49'41.50" (104.828194) | LONGITUDE = 104°49'51.06" (104.830850) | LONGITUDE = 104°51'55.65" (104.865458) |

CERTIFICATE OF RECORD  
THIS IS TO CERTIFY THAT THE ABOVE SAID SURVEY WAS MADE IN ACCORDANCE WITH THE NOTES OF ACTUAL SURVEYS MADE BY ME AND UNDER MY SUPERVISION, AND THAT THE SAME ARE TRUE AND CORRECT TO THE BEST OF MY KNOWLEDGE AND BELIEF.  
REGISTERED LAND SURVEYOR  
REGISTRATION NO. 28285  
STATE OF COLORADO  
JUL 16 2016

REV: 1 11-16-16 K.B. (NAME, EP & TBH CHANGE)

**GREAT WESTERN OPERATING COMPANY**  
SCHNEIDER HD 11-299HN  
SW 1/4 SW 1/4, SECTION 7, T4N, R66W, 6th P.M.  
WELD COUNTY, COLORADO  
SURVEYED BY GREG WEIMER, J.S. 05-27-16  
DRAWN BY K.B. 05-31-16 SCALE 1" = 1000'  
**WELL LOCATION PLAT**

PDOP = 1.2