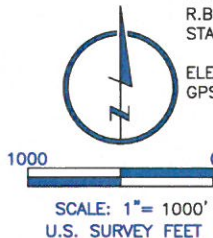


#### LAND SURVEYOR'S CERTIFICATION

LAMP, RYNEARSON & ASSOCIATES, INC., OF FT. COLLINS, COLORADO HAS, IN ACCORDANCE WITH A REQUEST FROM DUSTIN DYK AT EXTRACTION OIL & GAS, DETERMINED THE SURFACE LOCATION OF THE WELL DESIGNATED AS TC-AIMS 4-9-11 TO BE 2616' FROM THE SOUTH LINE AND 1190' FROM THE EAST LINE OF SECTION 8, TOWNSHIP 5 NORTH, RANGE 66 WEST OF THE 6TH P.M., WELD COUNTY, COLORADO.



FRANK A. KOHL  
 COLORADO PLS 37067  
 DATE OF SURVEY: 9/18/2013 AND 12/10/13 (SECTION CONTROL)  
 DATE OF SURVEY: 2/21/2014 (WELL LOCATION)



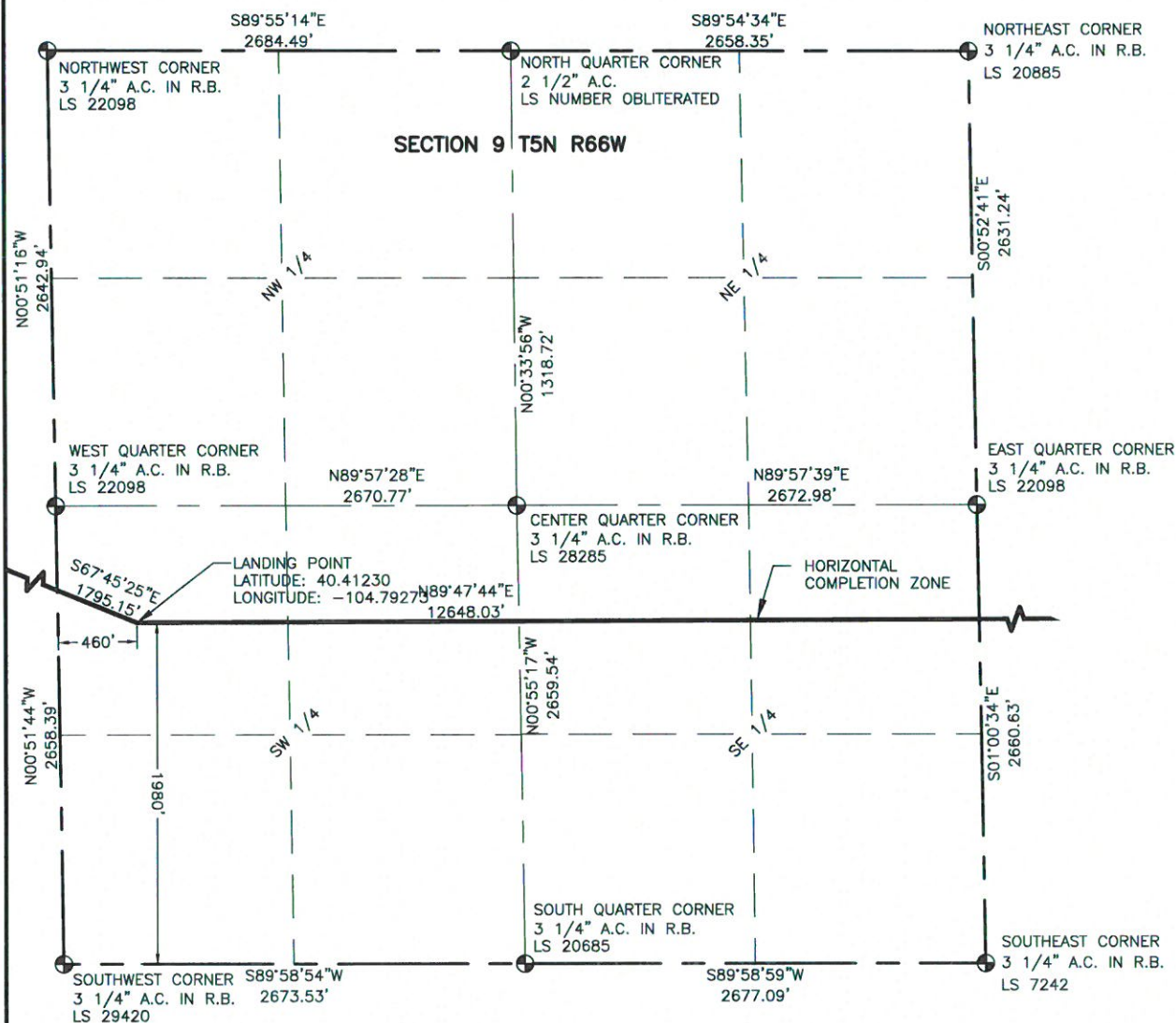
**LAMP RYNEARSON**  
 & ASSOCIATES

4715 Innovation Drive 970.226.0342 | P  
 Fort Collins, CO 80525 970.226.0879 | F  
 www.LRA-Inc.com

Proposed Well Location Exhibit  
 TC-Aims 4-9-11  
 1 of 4

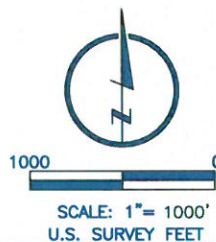
drawn by KJW	date 12/22/16	cogcc id 436824	project - task number 0213054.01	book and page	surface - location SE/4, NE/4, SEC 8 T5N R66W
-----------------	------------------	--------------------	-------------------------------------	---------------	--

path\filename P:\\_Engineering\0213054.01\DRAWINGS\EXHIBITS\0213054-01EXWPP.dwg



#### LEGEND

- ⊕ ALIQUOT CORNER
- ⊙ BOTTOM HOLE
- ⊙ PROPOSED WELL
- A.C. ALUMINUM CAP
- R.B. RANGE BOX



#### NOTES:

- DISTANCES ARE MEASURED PERPENDICULAR TO NEAREST SECTION LINE AND ARE SHOWN ON THE SAME SIDE OF THE SECTION LINE WHERE THE WELL IS LOCATED.
- THIS MAP DOES NOT REPRESENT A MONUMENTED BOUNDARY SURVEY. SIXTEENTH CORNER LOCATIONS ARE COMPUTED, UNLESS OTHERWISE NOTED.
- BOTTOM HOLE LOCATIONS AND HORIZONTAL COMPLETION ZONE PROVIDED BY OTHERS.



**LAMP RYNEARSON**  
& ASSOCIATES

4715 Innovation Drive 970.226.0342 | P  
Fort Collins, CO 80525 970.226.0879 | F  
www.LRA-inc.com

Proposed Well Location Exhibit  
TC-Aims 4-9-11  
2 of 4

drawn by  
KJW

date  
12/22/16

cogcc id  
436824

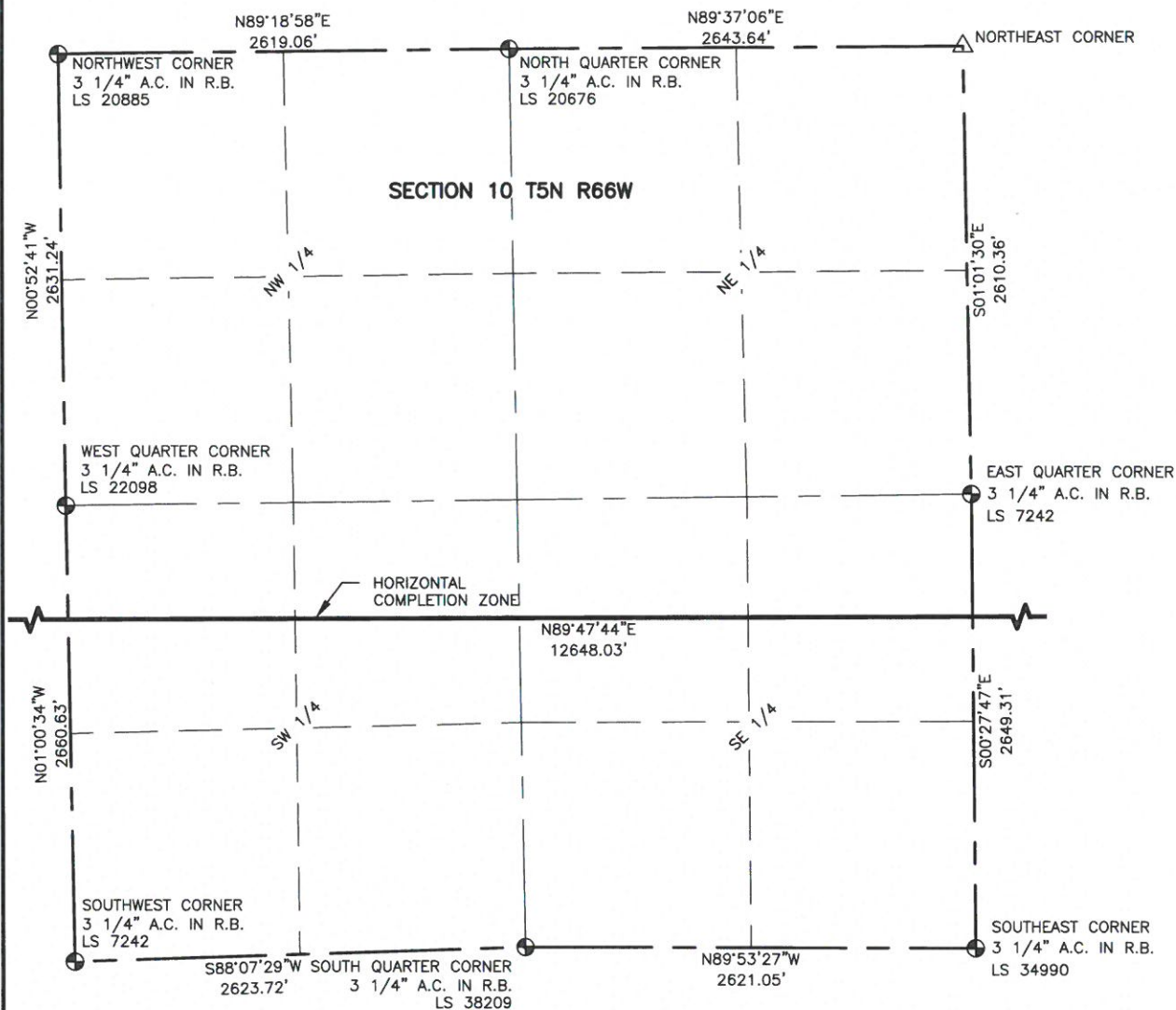
project - task number  
0213054.01

book and page

surface - location  
SE/4, NE/4, SEC 8 T5N R66W

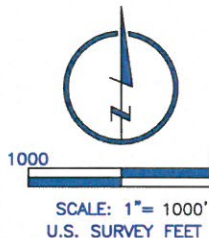
path/filename P:\ Engineering\0213054.01\DRAWINGS\EXHIBITS\0213054-01EXWPPB.dwg





#### LEGEND

- ALIQUOT CORNER
- ⊙ BOTTOM HOLE
- △ COMPUTED ALIQUOT CORNER FROM MONUMENT ACCESSORIES
- PROPOSED WELL
- A.C. ALUMINUM CAP
- R.B. RANGE BOX



#### NOTES:

1. DISTANCES ARE MEASURED PERPENDICULAR TO NEAREST SECTION LINE AND ARE SHOWN ON THE SAME SIDE OF THE SECTION LINE WHERE THE WELL IS LOCATED.
2. THIS MAP DOES NOT REPRESENT A MONUMENTED BOUNDARY SURVEY. SIXTEENTH CORNER LOCATIONS ARE COMPUTED, UNLESS OTHERWISE NOTED.
3. BOTTOM HOLE LOCATIONS AND HORIZONTAL COMPLETION ZONE PROVIDED BY OTHERS.



**LAMP RYNEARSON**  
& ASSOCIATES

4715 Innovation Drive 970.226.0342 | P  
Fort Collins, CO 80525 970.226.0879 | F  
www.LRA-Inc.com

Proposed Well Location Exhibit  
TC-Aims 4-9-11  
3 of 4

drawn by  
KJW

date  
12/22/16

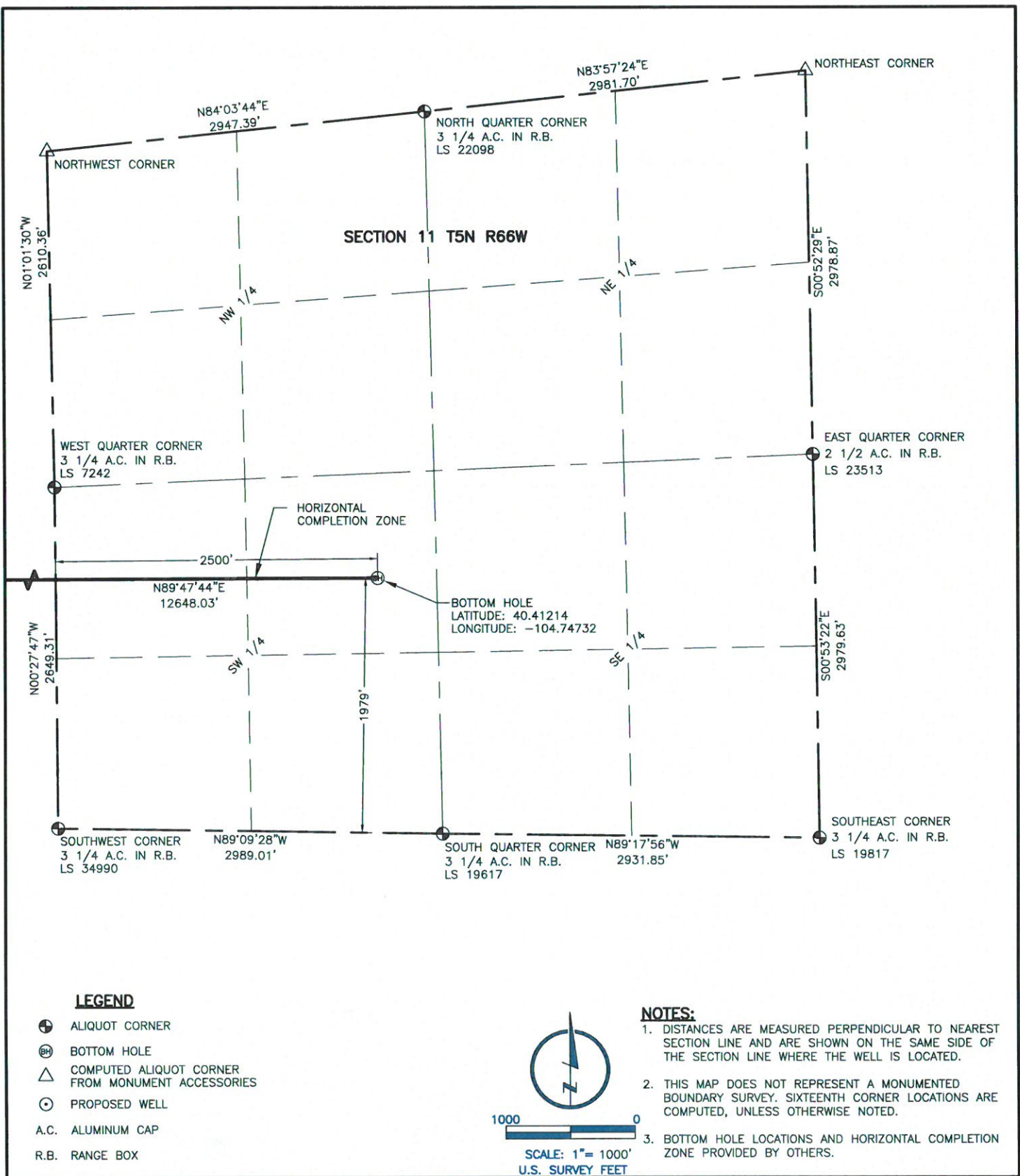
cogcc id  
436824

project - task number  
0213054.01

book and page

surface - location  
SE/4, NE/4, SEC 8 T5N R66W

path/filename P:\\_Engineering\0213054.01\DRAWINGS\EXHIBITS\0213054-01EXWPPC.dwg



**LAMP RYNEARSON**  
& ASSOCIATES

4715 Innovation Drive 970.226.0342 | P  
Fort Collins, CO 80525 970.226.0879 | F  
www.LRA-Inc.com

Proposed Well Location Exhibit  
TC-Aims 4-9-11  
4 of 4

drawn by  
KJW

date  
12/22/16

cogcc id  
436824

project - task number  
0213054.01

book and page

surface - location  
SE/4, NE/4, SEC 8 T5N R66W

path/filename P:\Engineering\0213054.01\DRAWINGS\EXHIBITS\0213054-01EXWPPD.dwg