

Location:	COLORADO	Slot:	SLOT#04 GOETZEL 4N-30A-M (1873'FNL & 2446'FEL, SEC.29)
Field:	WELD COUNTY (NAD83,TRUE NORTH)	Well:	GOETZEL 4N-30A-M
Facility:	SEC.29-T06N-R66W	Wellbore:	GOETZEL 4N-30A-M PWB

Grid System: NAD83 / Lambert Colorado SP. Northern Zone (501). US feet

True vertical depths are referenced to PRECISION 462 (20'KB) (RKB)

\* = Wellpath was transformed from a different geodetic datum

Measured depths are referenced to PRECISION 462 (20KB) (RKB)

North Reference: True north

[illegible]

100% 90% 80% 70% 60% 50% 40% 30% 20% 10% 0%

PRECISION 452 (20 RD) (RRD) to mean Sea Level: 4740 feet

Scale: True distance

Mean Sea Level to Mud line (At Slot: SLOT#04 GOETZEL 4N-30A-M (1873'FNL & 2446'FEL, SEC.29)): 0 feet

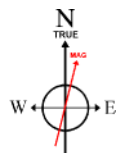
Depths are in feet

Coordinates are in feet referenced to Slot

Created by: ingmjmr on 2016-11-15

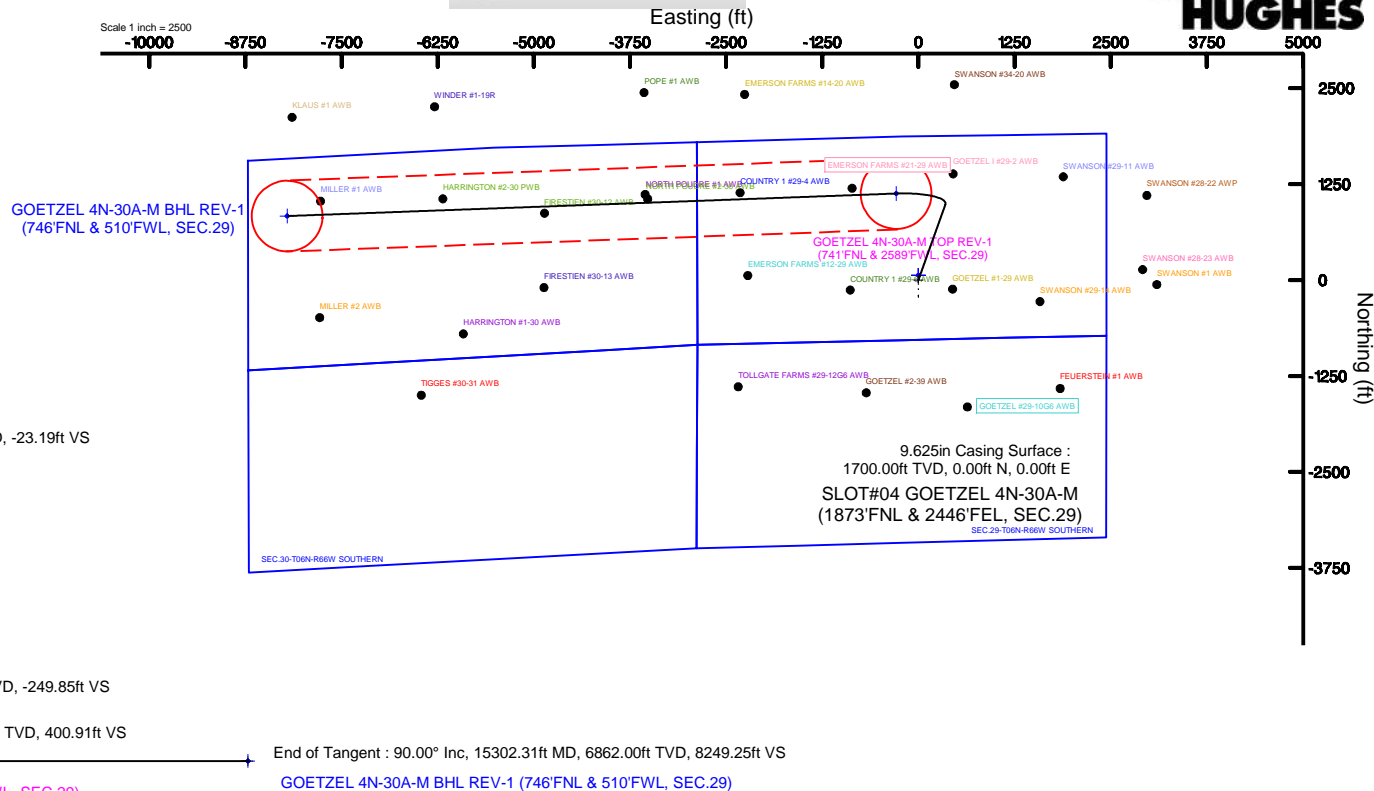
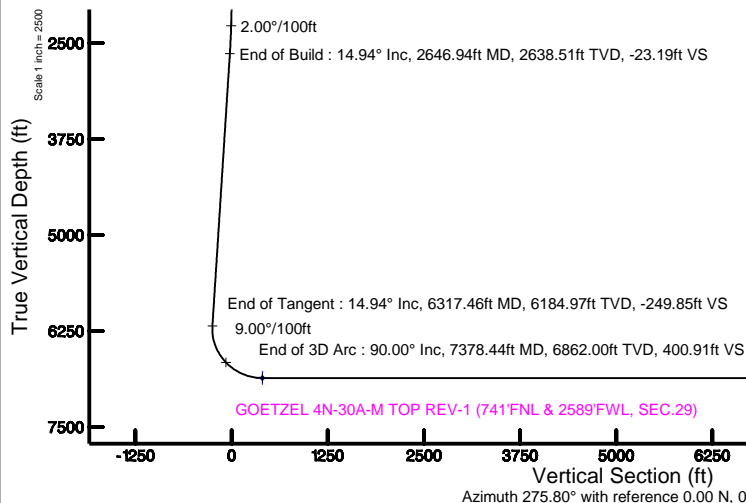
Facility Name	Grid East (US ft)	Grid North (US ft)	Latitude	Longitude
SEC.29-TD6N-R66W	3194449.662	1411671.988	40°27'40.817"N	104°48'04.259"W
Slot	Local N (ft)	Local E (ft)	Grid North (US ft)	Grid East (US ft)
SLOT#04 GOETZEL 4N-30A-M (1873FNL & 2446FEL, SEC.29)	-60.09	-0.25	1411611.898	3194449.888
			40°27'40.223"N	104°48'04.262"W
PRECISION 462 (20KB) (RKB) to Mud line (At Slot: SLOT#04 GOETZEL 4N-30A-M (1873FNL & 2446FEL, SEC.29))				4748ft
Mean Sea Level to Mud line (At Slot: SLOT#04 GOETZEL 4N-30A-M (1873FNL & 2446FEL, SEC.29))				0ft
PRECISION 462 (20KB) (RKB) to Mean Sea Level				4748ft

MD (ft)	Inc (°)	Az (°)	TVD (ft)	Local N (ft)	Local E (ft)	Grid East (US ft)	Grid North (US ft)	Latitude	Longitude
20.00	0.000	19.658	20.00	0.00	0.00	3194449.89	1411611.90	40°27'40.223"N	104°48'04.262"W



BGGM (1900.0 to 2018.0) Dip: 66.93° Field: 52529.3 nT  
Magnetic North is 8.46 degrees East of True North (at 11/10/2016)

To correct azimuth from Magnetic to True add 8.46 degrees



Design Comment	MD (ft)	Inc (°)	Az (°)	TVD (ft)	Local N (ft)	Local E (ft)	DLS (°/100ft)	VS (ft)
Tie On	20.00	0.000	19.658	20.00	0.00	0.00	0.00	0.00
End of Tangent	1900.00	0.000	19.658	1900.00	0.00	0.00	0.00	0.00
End of Build	2646.94	14.939	19.658	2638.51	91.18	32.57	2.00	-23.19
End of Tangent	6317.46	14.939	19.658	6184.97	982.25	350.89	0.00	-249.85
End of 3D Arc	7378.44	90.000	267.881	6862.00	1126.45	-288.58	9.00	400.91
End of Tangent	15302.31	90.000	267.881	6862.00	833.44	-8207.04	0.00	8249.25

Start MD (ft)	End MD (ft)	Tool	Model	Log Name/Comment	Wellbore
20.00	1700.00	BHI Navitrak	Custom BHI Navitrak (Standard Rotating) (Rockies 0.03Gt model)		GOETZEL 4N-30A-M PWB
1700.00	15302.31	BHI AutoTrak Curve	Custom BHI AutoTrak Curve (Short) (Rockies 0.03Gt model)		GOETZEL 4N-30A-M PWB

Name	MD (ft)	TVD (ft)	Local N (ft)	Local E (ft)	Grid East (US ft)	Grid North (US ft)	Latitude	Longitude
SEC.29-T06N-R66W NORTHERN	0.00	60.09	0.25	3194449.66	1411671.99	40°27'40.817"N	104°48'04.259"W	
SEC.29-T06N-R66W SOUTHERN	0.00	60.09	0.25	3194449.66	1411671.99	40°27'40.817"N	104°48'04.259"W	
SEC.30-T06N-R66W NORTHERN	0.00	60.09	0.25	3194449.66	1411671.99	40°27'40.817"N	104°48'04.259"W	
SEC.30-T06N-R66W SOUTHERN	0.00	60.09	0.25	3194449.66	1411671.99	40°27'40.817"N	104°48'04.259"W	
GOETZEL 4N-30A-M BHL REV.1 (74°FNL & 510°FWL, SEC.29)	15302.31	6862.00	633.44	-6205.04	3186236.85	1412360.61	40°27'48.445"N	104°49'50.444"W
GOETZEL 4N-30A-M TOP REV.1 (74°FNL & 258°FWL, SEC.29)	7378.44	6862.00	1126.45	-288.58	3194152.45	1412735.99	40°27'51.354"N	104°48'07.996"W



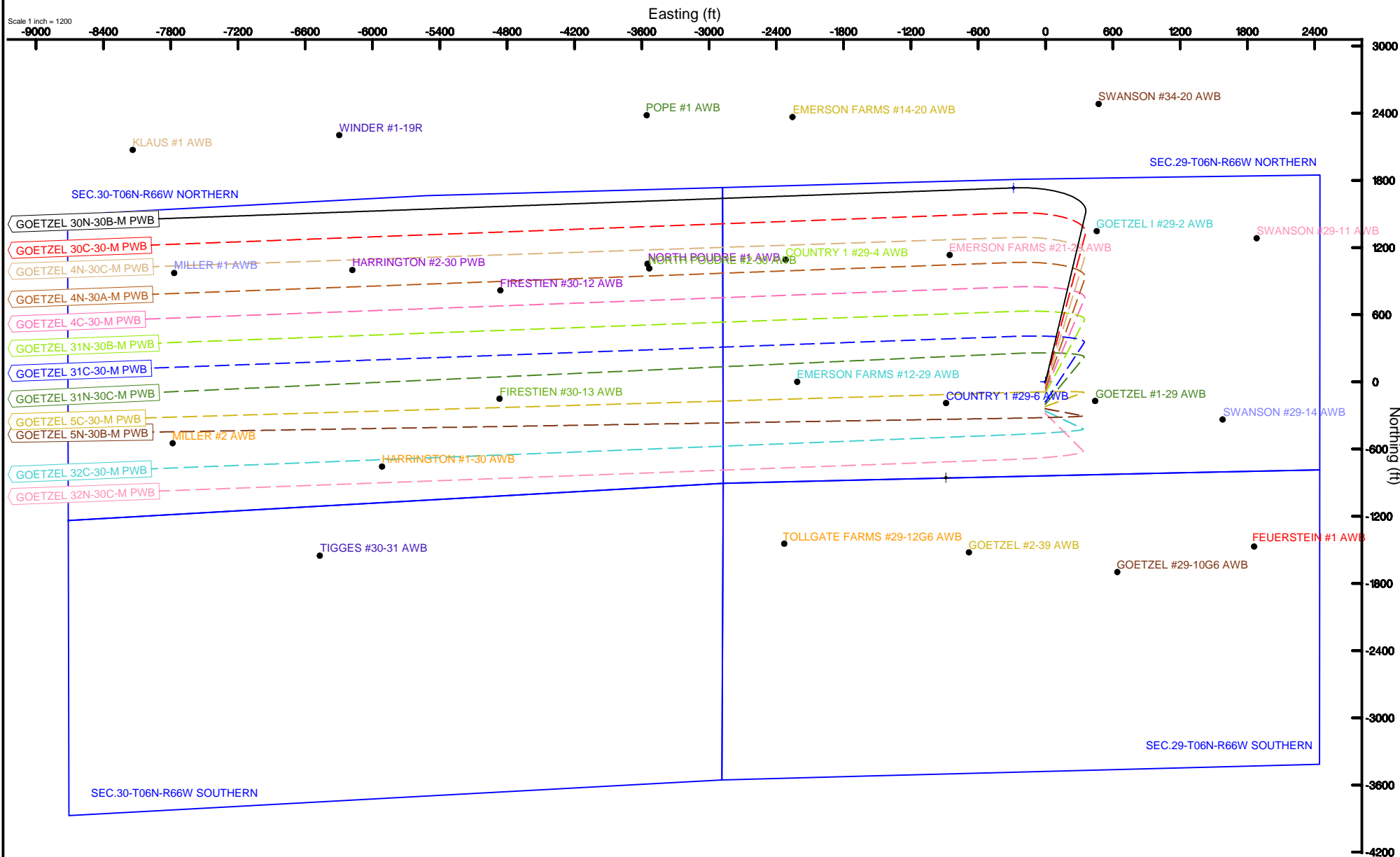
# SYNERGY RESOURCES CORPORATION

Location: COLORADO Slot: SLOT#01 GOETZEL 30N-30B-M (1813'FNL & 2445'FEL, SEC.29)  
Field: WELD COUNTY (NAD83,TRUE NORTH) Well: GOETZEL 30N-30B-M  
Facility: SEC.29-T06N-R66W Wellbore: GOETZEL 30N-30B-M PWB



BGGM (1900.0 to 2018.0) Dip: 66.93° Field: 52529.3 nT  
Magnetic North is 8.46 degrees East of True North (at 11/10/2016)

To correct azimuth from Magnetic to True add 8.46 degrees



GOETZEL\_4N-30A-M\_PWP\_\_REV-A.0\_.las

~VERSION INFORMATION

VERS. 2.0 : CWLS LOG ASCII STANDARD-VERSION 2.0  
 WRAP. NO : ASCII DATA SECTION CONTAINS ONE ROW PER WELLPATH STATION

~WELL INFORMATION

#MNEM	.UNITS	DATA	:DESCRIPTION
#-----	.-----	----	:-----
STRT	.ft	0.00	:START MD
STOP	.ft	15302.31	:STOP MD
STEP	.ft	0.0	:STEP (non-uniform increment)
NULL	.	-999.99	:NULL
COMP	.	SYNERGY RESOURCES CORPORATION	:OPERATOR
WELL	.	GOETZEL 4N-30A-M	:WELL
FLD	.	WELD COUNTY (NAD83,TRUE NORTH)	:FIELD
LOC	.	COLORADO	:AREA (aka: Location)
CNTY	.	N/A	:COUNTY
STAT	.	N/A	:STATE
CTRY	.	N/A	:COUNTRY
SRVC	.	Baker Hughes	:CONTRACTOR
DATE	.	11/10/2016	:LOG REV DATE
API	.		:API NUMBER

~OTHER INFORMATION

#Software: WellArchitect(R) Version 5.0

#MNEM	.UNITS	DATA	:DESCRIPTION
#-----	.-----	----	:-----
WPTYPE	.	PLANNED WELLPATH	:WELLPATH TYPE
FACILITY	.	SEC.29-T06N-R66W	:FACILITY
SLOT	.	SLOT#04 GOETZEL 4N-30A-M (1873'FNL & 2446'FEL, SEC.29):SLOT	:SLOT
WELLBORE	.	GOETZEL 4N-30A-M PWB	:WELLBORE
WELLPATH	.	GOETZEL 4N-30A-M PWP (REV-A.0)	:WELLPATH
MDREFPT	.	PRECISION 462 (20'KB) (RKB)	:MD REFERENCE POINT
TVDREFPT	.	PRECISION 462 (20'KB) (RKB)	:TVD REFERENCE POINT
LCLREFPT	.	SLOT	:LOCAL COORDINATE REFERENCE PT
VSAZIMUTH	.deg	275.80	:VERTICAL SECTION AZIMUTH
VSORIGN	.ft	0.00	:VERTICAL SECTION ORIGIN NORTH
VSORIGE	.ft	0.00	:VERTICAL SECTION ORIGIN EAST

~CURVE (WELLPATH) INFORMATION

#MNEM	.UNITS	:DESCRIPTION
#-----	.-----	:-----
DEPT	.ft	:MEASURED DEPTH
INC	.deg	:INCLINATION
AZI	.deg	:AZIMUTH
TVD	.ft	:TRUE VERTICAL DEPTH
SECT	.ft	:CROSS SECTION (CURTAIN/VERTICAL)
LOCALN	.ft	:LOCAL NORTH
LOCALE	.ft	:LOCAL EAST

## GOETZEL\_4N-30A-M\_PWP\_\_REV-A.0\_.las

LAT .deg :LATITUDE  
 LONG .deg :LONGITUDE  
 DLS .deg/100ft :DOGLEG SEVERITY

## ~ASCII DATA

0.00	0.00	19.66	0.00	0.00	0.00	0.00	40.4611731	-104.8011839	0.00
20.00	0.00	19.66	20.00	0.00	0.00	0.00	40.4611731	-104.8011839	0.00
120.00	0.00	19.66	120.00	0.00	0.00	0.00	40.4611731	-104.8011839	0.00
220.00	0.00	19.66	220.00	0.00	0.00	0.00	40.4611731	-104.8011839	0.00
320.00	0.00	19.66	320.00	0.00	0.00	0.00	40.4611731	-104.8011839	0.00
420.00	0.00	19.66	420.00	0.00	0.00	0.00	40.4611731	-104.8011839	0.00
520.00	0.00	19.66	520.00	0.00	0.00	0.00	40.4611731	-104.8011839	0.00
620.00	0.00	19.66	620.00	0.00	0.00	0.00	40.4611731	-104.8011839	0.00
720.00	0.00	19.66	720.00	0.00	0.00	0.00	40.4611731	-104.8011839	0.00
820.00	0.00	19.66	820.00	0.00	0.00	0.00	40.4611731	-104.8011839	0.00
920.00	0.00	19.66	920.00	0.00	0.00	0.00	40.4611731	-104.8011839	0.00
1020.00	0.00	19.66	1020.00	0.00	0.00	0.00	40.4611731	-104.8011839	0.00
1120.00	0.00	19.66	1120.00	0.00	0.00	0.00	40.4611731	-104.8011839	0.00
1220.00	0.00	19.66	1220.00	0.00	0.00	0.00	40.4611731	-104.8011839	0.00
1320.00	0.00	19.66	1320.00	0.00	0.00	0.00	40.4611731	-104.8011839	0.00
1420.00	0.00	19.66	1420.00	0.00	0.00	0.00	40.4611731	-104.8011839	0.00
1520.00	0.00	19.66	1520.00	0.00	0.00	0.00	40.4611731	-104.8011839	0.00
1620.00	0.00	19.66	1620.00	0.00	0.00	0.00	40.4611731	-104.8011839	0.00
1720.00	0.00	19.66	1720.00	0.00	0.00	0.00	40.4611731	-104.8011839	0.00
1820.00	0.00	19.66	1820.00	0.00	0.00	0.00	40.4611731	-104.8011839	0.00
1900.00	0.00	19.66	1900.00	0.00	0.00	0.00	40.4611731	-104.8011839	0.00
1920.00	0.40	19.66	1920.00	-0.02	0.07	0.02	40.4611732	-104.8011838	2.00
2020.00	2.40	19.66	2019.96	-0.60	2.37	0.85	40.4611796	-104.8011809	2.00
2120.00	4.40	19.66	2119.78	-2.02	7.95	2.84	40.4611949	-104.8011737	2.00
2220.00	6.40	19.66	2219.33	-4.28	16.81	6.01	40.4612192	-104.8011623	2.00
2320.00	8.40	19.66	2318.50	-7.36	28.94	10.34	40.4612525	-104.8011467	2.00
2420.00	10.40	19.66	2417.15	-11.27	44.32	15.83	40.4612947	-104.8011270	2.00
2520.00	12.40	19.66	2515.17	-16.01	62.93	22.48	40.4613458	-104.8011031	2.00
2620.00	14.40	19.66	2612.44	-21.56	84.76	30.28	40.4614057	-104.8010751	2.00
2646.94	14.94	19.66	2638.51	-23.19	91.18	32.57	40.4614233	-104.8010668	2.00
2720.00	14.94	19.66	2709.10	-27.71	108.92	38.91	40.4614720	-104.8010441	0.00
2820.00	14.94	19.66	2805.72	-33.88	133.19	47.58	40.4615387	-104.8010129	0.00
2920.00	14.94	19.66	2902.34	-40.06	157.47	56.25	40.4616053	-104.8009817	0.00
3020.00	14.94	19.66	2998.96	-46.23	181.75	64.93	40.4616719	-104.8009506	0.00
3120.00	14.94	19.66	3095.58	-52.41	206.02	73.60	40.4617386	-104.8009194	0.00
3220.00	14.94	19.66	3192.20	-58.58	230.30	82.27	40.4618052	-104.8008882	0.00
3320.00	14.94	19.66	3288.82	-64.76	254.58	90.94	40.4618718	-104.8008571	0.00
3420.00	14.94	19.66	3385.44	-70.93	278.85	99.61	40.4619385	-104.8008259	0.00
3520.00	14.94	19.66	3482.06	-77.11	303.13	108.29	40.4620051	-104.8007947	0.00
3620.00	14.94	19.66	3578.68	-83.28	327.40	116.96	40.4620717	-104.8007636	0.00
3720.00	14.94	19.66	3675.30	-89.46	351.68	125.63	40.4621384	-104.8007324	0.00
3820.00	14.94	19.66	3771.92	-95.63	375.96	134.30	40.4622050	-104.8007012	0.00
3920.00	14.94	19.66	3868.54	-101.81	400.23	142.98	40.4622716	-104.8006701	0.00

GOETZEL_4N-30A-M_PWP__REV-A.0_.las									
4020.00	14.94	19.66	3965.16	-107.98	424.51	151.65	40.4623383	-104.8006389	0.00
4120.00	14.94	19.66	4061.78	-114.16	448.79	160.32	40.4624049	-104.8006077	0.00
4220.00	14.94	19.66	4158.40	-120.33	473.06	168.99	40.4624716	-104.8005766	0.00
4320.00	14.94	19.66	4255.02	-126.51	497.34	177.66	40.4625382	-104.8005454	0.00
4420.00	14.94	19.66	4351.64	-132.68	521.62	186.34	40.4626048	-104.8005143	0.00
4520.00	14.94	19.66	4448.26	-138.86	545.89	195.01	40.4626715	-104.8004831	0.00
4620.00	14.94	19.66	4544.88	-145.03	570.17	203.68	40.4627381	-104.8004519	0.00
4720.00	14.94	19.66	4641.50	-151.21	594.44	212.35	40.4628047	-104.8004208	0.00
4820.00	14.94	19.66	4738.12	-157.38	618.72	221.02	40.4628714	-104.8003896	0.00
4920.00	14.94	19.66	4834.74	-163.56	643.00	229.70	40.4629380	-104.8003584	0.00
5020.00	14.94	19.66	4931.36	-169.73	667.27	238.37	40.4630046	-104.8003273	0.00
5120.00	14.94	19.66	5027.98	-175.91	691.55	247.04	40.4630713	-104.8002961	0.00
5220.00	14.94	19.66	5124.60	-182.08	715.83	255.71	40.4631379	-104.8002649	0.00
5320.00	14.94	19.66	5221.22	-188.26	740.10	264.39	40.4632045	-104.8002338	0.00
5420.00	14.94	19.66	5317.84	-194.43	764.38	273.06	40.4632712	-104.8002026	0.00
5520.00	14.94	19.66	5414.46	-200.61	788.66	281.73	40.4633378	-104.8001714	0.00
5620.00	14.94	19.66	5511.08	-206.78	812.93	290.40	40.4634044	-104.8001403	0.00
5720.00	14.94	19.66	5607.70	-212.96	837.21	299.07	40.4634711	-104.8001091	0.00
5820.00	14.94	19.66	5704.32	-219.13	861.48	307.75	40.4635377	-104.8000779	0.00
5920.00	14.94	19.66	5800.94	-225.31	885.76	316.42	40.4636043	-104.8000468	0.00
6020.00	14.94	19.66	5897.56	-231.48	910.04	325.09	40.4636710	-104.8000156	0.00
6120.00	14.94	19.66	5994.18	-237.66	934.31	333.76	40.4637376	-104.7999844	0.00
6220.00	14.94	19.66	6090.80	-243.83	958.59	342.44	40.4638043	-104.7999533	0.00
6317.46	14.94	19.66	6184.97	-249.85	982.25	350.89	40.4638692	-104.7999229	0.00
6320.00	14.86	18.83	6187.42	-250.00	982.87	351.10	40.4638709	-104.7999221	9.00
6420.00	14.40	342.67	6284.38	-248.01	1006.92	351.54	40.4639369	-104.7999205	9.00
6520.00	18.78	314.65	6380.34	-230.55	1030.15	336.35	40.4640007	-104.7999751	9.00
6620.00	25.63	298.97	6472.95	-198.06	1051.99	305.91	40.4640606	-104.8000845	9.00
6720.00	33.46	289.90	6559.92	-151.35	1071.89	260.98	40.4641152	-104.8002460	9.00
6820.00	41.72	284.01	6639.12	-91.55	1089.36	202.65	40.4641632	-104.8004556	9.00
6920.00	50.20	279.79	6708.59	-20.15	1103.99	132.37	40.4642034	-104.8007082	9.00
7020.00	58.80	276.51	6766.62	61.10	1115.40	51.86	40.4642347	-104.8009975	9.00
7120.00	67.46	273.78	6811.78	150.20	1123.31	-36.90	40.4642564	-104.8013165	9.00
7220.00	76.17	271.38	6842.96	244.95	1127.53	-131.71	40.4642680	-104.8016572	9.00
7320.00	84.90	269.15	6859.40	343.03	1127.96	-230.24	40.4642692	-104.8020113	9.00
7378.44	90.00	267.88	6862.00	400.91	1126.45	-288.58	40.4642650	-104.8022210	9.00
7420.00	90.00	267.88	6862.00	442.08	1124.91	-330.12	40.4642608	-104.8023703	0.00
7520.00	90.00	267.88	6862.00	541.13	1121.21	-430.05	40.4642506	-104.8027294	0.00
7620.00	90.00	267.88	6862.00	640.17	1117.51	-529.98	40.4642405	-104.8030885	0.00
7720.00	90.00	267.88	6862.00	739.22	1113.82	-629.91	40.4642303	-104.8034477	0.00
7820.00	90.00	267.88	6862.00	838.27	1110.12	-729.84	40.4642202	-104.8038068	0.00
7920.00	90.00	267.88	6862.00	937.31	1106.42	-829.78	40.4642100	-104.8041659	0.00
8020.00	90.00	267.88	6862.00	1036.36	1102.72	-929.71	40.4641998	-104.8045251	0.00
8120.00	90.00	267.88	6862.00	1135.41	1099.03	-1029.64	40.4641897	-104.8048842	0.00
8220.00	90.00	267.88	6862.00	1234.45	1095.33	-1129.57	40.4641795	-104.8052433	0.00
8320.00	90.00	267.88	6862.00	1333.50	1091.63	-1229.50	40.4641694	-104.8056025	0.00
8420.00	90.00	267.88	6862.00	1432.55	1087.93	-1329.43	40.4641592	-104.8059616	0.00
8520.00	90.00	267.88	6862.00	1531.59	1084.23	-1429.37	40.4641490	-104.8063207	0.00

GOETZEL_4N-30A-M_PWP__REV-A.0_.las									
8620.00	90.00	267.88	6862.00	1630.64	1080.54	-1529.30	40.4641389	-104.8066799	0.00
8720.00	90.00	267.88	6862.00	1729.69	1076.84	-1629.23	40.4641287	-104.8070390	0.00
8820.00	90.00	267.88	6862.00	1828.73	1073.14	-1729.16	40.4641185	-104.8073981	0.00
8920.00	90.00	267.88	6862.00	1927.78	1069.44	-1829.09	40.4641084	-104.8077573	0.00
9020.00	90.00	267.88	6862.00	2026.83	1065.75	-1929.02	40.4640982	-104.8081164	0.00
9120.00	90.00	267.88	6862.00	2125.87	1062.05	-2028.96	40.4640880	-104.8084755	0.00
9220.00	90.00	267.88	6862.00	2224.92	1058.35	-2128.89	40.4640778	-104.8088347	0.00
9320.00	90.00	267.88	6862.00	2323.97	1054.65	-2228.82	40.4640677	-104.8091938	0.00
9420.00	90.00	267.88	6862.00	2423.01	1050.96	-2328.75	40.4640575	-104.8095529	0.00
9520.00	90.00	267.88	6862.00	2522.06	1047.26	-2428.68	40.4640473	-104.8099121	0.00
9620.00	90.00	267.88	6862.00	2621.11	1043.56	-2528.61	40.4640371	-104.8102712	0.00
9720.00	90.00	267.88	6862.00	2720.15	1039.86	-2628.55	40.4640270	-104.8106303	0.00
9820.00	90.00	267.88	6862.00	2819.20	1036.16	-2728.48	40.4640168	-104.8109895	0.00
9920.00	90.00	267.88	6862.00	2918.25	1032.47	-2828.41	40.4640066	-104.8113486	0.00
10020.00	90.00	267.88	6862.00	3017.29	1028.77	-2928.34	40.4639964	-104.8117077	0.00
10120.00	90.00	267.88	6862.00	3116.34	1025.07	-3028.27	40.4639862	-104.8120668	0.00
10220.00	90.00	267.88	6862.00	3215.39	1021.37	-3128.20	40.4639760	-104.8124260	0.00
10320.00	90.00	267.88	6862.00	3314.44	1017.68	-3228.13	40.4639659	-104.8127851	0.00
10420.00	90.00	267.88	6862.00	3413.48	1013.98	-3328.07	40.4639557	-104.8131442	0.00
10520.00	90.00	267.88	6862.00	3512.53	1010.28	-3428.00	40.4639455	-104.8135034	0.00
10620.00	90.00	267.88	6862.00	3611.58	1006.58	-3527.93	40.4639353	-104.8138625	0.00
10720.00	90.00	267.88	6862.00	3710.62	1002.88	-3627.86	40.4639251	-104.8142216	0.00
10820.00	90.00	267.88	6862.00	3809.67	999.19	-3727.79	40.4639149	-104.8145808	0.00
10920.00	90.00	267.88	6862.00	3908.72	995.49	-3827.72	40.4639047	-104.8149399	0.00
11020.00	90.00	267.88	6862.00	4007.76	991.79	-3927.66	40.4638945	-104.8152990	0.00
11120.00	90.00	267.88	6862.00	4106.81	988.09	-4027.59	40.4638843	-104.8156582	0.00
11220.00	90.00	267.88	6862.00	4205.86	984.40	-4127.52	40.4638741	-104.8160173	0.00
11320.00	90.00	267.88	6862.00	4304.90	980.70	-4227.45	40.4638639	-104.8163764	0.00
11420.00	90.00	267.88	6862.00	4403.95	977.00	-4327.38	40.4638538	-104.8167355	0.00
11520.00	90.00	267.88	6862.00	4503.00	973.30	-4427.31	40.4638436	-104.8170947	0.00
11620.00	90.00	267.88	6862.00	4602.04	969.60	-4527.25	40.4638334	-104.8174538	0.00
11720.00	90.00	267.88	6862.00	4701.09	965.91	-4627.18	40.4638232	-104.8178129	0.00
11820.00	90.00	267.88	6862.00	4800.14	962.21	-4727.11	40.4638130	-104.8181721	0.00
11920.00	90.00	267.88	6862.00	4899.18	958.51	-4827.04	40.4638027	-104.8185312	0.00
12020.00	90.00	267.88	6862.00	4998.23	954.81	-4926.97	40.4637925	-104.8188903	0.00
12120.00	90.00	267.88	6862.00	5097.28	951.12	-5026.90	40.4637823	-104.8192494	0.00
12220.00	90.00	267.88	6862.00	5196.32	947.42	-5126.84	40.4637721	-104.8196086	0.00
12320.00	90.00	267.88	6862.00	5295.37	943.72	-5226.77	40.4637619	-104.8199677	0.00
12420.00	90.00	267.88	6862.00	5394.42	940.02	-5326.70	40.4637517	-104.8203268	0.00
12520.00	90.00	267.88	6862.00	5493.46	936.33	-5426.63	40.4637415	-104.8206860	0.00
12620.00	90.00	267.88	6862.00	5592.51	932.63	-5526.56	40.4637313	-104.8210451	0.00
12720.00	90.00	267.88	6862.00	5691.56	928.93	-5626.49	40.4637211	-104.8214042	0.00
12820.00	90.00	267.88	6862.00	5790.60	925.23	-5726.42	40.4637109	-104.8217633	0.00
12920.00	90.00	267.88	6862.00	5889.65	921.53	-5826.36	40.4637007	-104.8221225	0.00
13020.00	90.00	267.88	6862.00	5988.70	917.84	-5926.29	40.4636904	-104.8224816	0.00
13120.00	90.00	267.88	6862.00	6087.74	914.14	-6026.22	40.4636802	-104.8228407	0.00
13220.00	90.00	267.88	6862.00	6186.79	910.44	-6126.15	40.4636700	-104.8231999	0.00
13320.00	90.00	267.88	6862.00	6285.84	906.74	-6226.08	40.4636598	-104.8235590	0.00

GOETZEL_4N-30A-M_PWP__REV-A.0_.las									
13420.00	90.00	267.88	6862.00	6384.88	903.05	-6326.01	40.4636496	-104.8239181	0.00
13520.00	90.00	267.88	6862.00	6483.93	899.35	-6425.95	40.4636394	-104.8242772	0.00
13620.00	90.00	267.88	6862.00	6582.98	895.65	-6525.88	40.4636291	-104.8246364	0.00
13720.00	90.00	267.88	6862.00	6682.02	891.95	-6625.81	40.4636189	-104.8249955	0.00
13820.00	90.00	267.88	6862.00	6781.07	888.25	-6725.74	40.4636087	-104.8253546	0.00
13920.00	90.00	267.88	6862.00	6880.12	884.56	-6825.67	40.4635985	-104.8257137	0.00
14020.00	90.00	267.88	6862.00	6979.16	880.86	-6925.60	40.4635882	-104.8260729	0.00
14120.00	90.00	267.88	6862.00	7078.21	877.16	-7025.54	40.4635780	-104.8264320	0.00
14220.00	90.00	267.88	6862.00	7177.26	873.46	-7125.47	40.4635678	-104.8267911	0.00
14320.00	90.00	267.88	6862.00	7276.30	869.77	-7225.40	40.4635575	-104.8271503	0.00
14420.00	90.00	267.88	6862.00	7375.35	866.07	-7325.33	40.4635473	-104.8275094	0.00
14520.00	90.00	267.88	6862.00	7474.40	862.37	-7425.26	40.4635371	-104.8278685	0.00
14620.00	90.00	267.88	6862.00	7573.44	858.67	-7525.19	40.4635269	-104.8282276	0.00
14720.00	90.00	267.88	6862.00	7672.49	854.97	-7625.13	40.4635166	-104.8285868	0.00
14820.00	90.00	267.88	6862.00	7771.54	851.28	-7725.06	40.4635064	-104.8289459	0.00
14920.00	90.00	267.88	6862.00	7870.58	847.58	-7824.99	40.4634961	-104.8293050	0.00
15020.00	90.00	267.88	6862.00	7969.63	843.88	-7924.92	40.4634859	-104.8296641	0.00
15120.00	90.00	267.88	6862.00	8068.68	840.18	-8024.85	40.4634757	-104.8300233	0.00
15220.00	90.00	267.88	6862.00	8167.72	836.49	-8124.78	40.4634654	-104.8303824	0.00
15302.31	90.00	267.88	6862.00	8249.25	833.44	-8207.04	40.4634570	-104.8306780	0.00



# Planned Wellpath Report

GOETZEL 4N-30A-M PWP (REV-A.0)

Page 1 of 7



## REFERENCE WELLPATH IDENTIFICATION

Operator	SYNERGY RESOURCES CORPORATION	Slot	SLOT#04 GOETZEL 4N-30A-M (1873'FNL & 2446'FEL, SEC.29)
Area	COLORADO	Well	GOETZEL 4N-30A-M
Field	WELD COUNTY (NAD83,TRUE NORTH)	Wellbore	GOETZEL 4N-30A-M PWB
Facility	SEC.29-T06N-R66W		

## REPORT SETUP INFORMATION

Projection System	NAD83 / Lambert Colorado SP, Northern Zone (501), US feet	Software System	WellArchitect® 5.0
North Reference	True	User	Ingmjmr
Scale	0.999964	Report Generated	11/15/2016 at 9:46:51 AM
Convergence at slot	0.46° East	Database/Source file	WA_DEN_Denver_Defn/GOETZEL_4N-30A-M_PWP_REV-A.0_.xml

## WELLPATH LOCATION

	Local coordinates		Grid coordinates		Geographic coordinates	
	North[ft]	East[ft]	Easting[US ft]	Northing[US ft]	Latitude	Longitude
Slot Location	-60.09	-0.25	3194449.89	1411611.90	40°27'40.223"N	104°48'04.262"W
Facility Reference Pt			3194449.66	1411671.99	40°27'40.817"N	104°48'04.259"W
Field Reference Pt			3171284.48	1426358.81	40°30'07.643"N	104°53'02.634"W

## WELLPATH DATUM

Calculation method	Minimum curvature	PRECISION 462 (20'KB) (RKB) to Facility Vertical Datum	4748.00ft
Horizontal Reference Pt	Slot	PRECISION 462 (20'KB) (RKB) to Mean Sea Level	4748.00ft
Vertical Reference Pt	PRECISION 462 (20'KB) (RKB)	PRECISION 462 (20'KB) (RKB) to Mud Line at Slot (SLOT#04 GOETZEL 4N-30A-M (1873'FNL & 2446'FEL, SEC.29))	4748.00ft
MD Reference Pt	PRECISION 462 (20'KB) (RKB)	Section Origin	N 0.00, E 0.00 ft
Field Vertical Reference	Mean Sea Level	Section Azimuth	275.80°





# Planned Wellpath Report

GOETZEL 4N-30A-M PWP (REV-A.0)

Page 2 of 7



## REFERENCE WELLPATH IDENTIFICATION

Operator	SYNERGY RESOURCES CORPORATION	Slot	SLOT#04 GOETZEL 4N-30A-M (1873'FNL & 2446'FEL, SEC.29)
Area	COLORADO	Well	GOETZEL 4N-30A-M
Field	WELD COUNTY (NAD83,TRUE NORTH)	Wellbore	GOETZEL 4N-30A-M PWB
Facility	SEC.29-T06N-R66W		

## WELLPATH DATA (159 stations) † = interpolated/extrapolated station

MD [ft]	Inclination [°]	Azimuth [°]	TVD [ft]	Vert Sect [ft]	North [ft]	East [ft]	DLS [°/100ft]	Comments
0.00†	0.000	19.658	0.00	0.00	0.00	0.00	0.00	
20.00	0.000	19.658	20.00	0.00	0.00	0.00	0.00	Tie On
120.00†	0.000	19.658	120.00	0.00	0.00	0.00	0.00	
220.00†	0.000	19.658	220.00	0.00	0.00	0.00	0.00	
320.00†	0.000	19.658	320.00	0.00	0.00	0.00	0.00	
420.00†	0.000	19.658	420.00	0.00	0.00	0.00	0.00	
520.00†	0.000	19.658	520.00	0.00	0.00	0.00	0.00	
620.00†	0.000	19.658	620.00	0.00	0.00	0.00	0.00	
720.00†	0.000	19.658	720.00	0.00	0.00	0.00	0.00	
820.00†	0.000	19.658	820.00	0.00	0.00	0.00	0.00	
920.00†	0.000	19.658	920.00	0.00	0.00	0.00	0.00	
1020.00†	0.000	19.658	1020.00	0.00	0.00	0.00	0.00	
1120.00†	0.000	19.658	1120.00	0.00	0.00	0.00	0.00	
1220.00†	0.000	19.658	1220.00	0.00	0.00	0.00	0.00	
1320.00†	0.000	19.658	1320.00	0.00	0.00	0.00	0.00	
1420.00†	0.000	19.658	1420.00	0.00	0.00	0.00	0.00	
1520.00†	0.000	19.658	1520.00	0.00	0.00	0.00	0.00	
1620.00†	0.000	19.658	1620.00	0.00	0.00	0.00	0.00	
1720.00†	0.000	19.658	1720.00	0.00	0.00	0.00	0.00	
1820.00†	0.000	19.658	1820.00	0.00	0.00	0.00	0.00	
1900.00	0.000	19.658	1900.00	0.00	0.00	0.00	0.00	End of Tangent
1920.00†	0.400	19.658	1920.00	-0.02	0.07	0.02	2.00	
2020.00†	2.400	19.658	2019.96	-0.60	2.37	0.85	2.00	
2120.00†	4.400	19.658	2119.78	-2.02	7.95	2.84	2.00	
2220.00†	6.400	19.658	2219.33	-4.28	16.81	6.01	2.00	
2320.00†	8.400	19.658	2318.50	-7.36	28.94	10.34	2.00	
2420.00†	10.400	19.658	2417.15	-11.27	44.32	15.83	2.00	
2520.00†	12.400	19.658	2515.17	-16.01	62.93	22.48	2.00	
2620.00†	14.400	19.658	2612.44	-21.56	84.76	30.28	2.00	
2646.94	14.939	19.658	2638.51	-23.19	91.18	32.57	2.00	End of Build
2720.00†	14.939	19.658	2709.10	-27.71	108.92	38.91	0.00	
2820.00†	14.939	19.658	2805.72	-33.88	133.19	47.58	0.00	
2920.00†	14.939	19.658	2902.34	-40.06	157.47	56.25	0.00	
3020.00†	14.939	19.658	2998.96	-46.23	181.75	64.93	0.00	
3120.00†	14.939	19.658	3095.58	-52.41	206.02	73.60	0.00	
3220.00†	14.939	19.658	3192.20	-58.58	230.30	82.27	0.00	
3320.00†	14.939	19.658	3288.82	-64.76	254.58	90.94	0.00	
3420.00†	14.939	19.658	3385.44	-70.93	278.85	99.61	0.00	
3520.00†	14.939	19.658	3482.06	-77.11	303.13	108.29	0.00	
3620.00†	14.939	19.658	3578.68	-83.28	327.40	116.96	0.00	
3720.00†	14.939	19.658	3675.30	-89.46	351.68	125.63	0.00	
3820.00†	14.939	19.658	3771.92	-95.63	375.96	134.30	0.00	
3920.00†	14.939	19.658	3868.54	-101.81	400.23	142.98	0.00	
4020.00†	14.939	19.658	3965.16	-107.98	424.51	151.65	0.00	
4120.00†	14.939	19.658	4061.78	-114.16	448.79	160.32	0.00	



# Planned Wellpath Report

GOETZEL 4N-30A-M PWP (REV-A.0)

Page 3 of 7



## REFERENCE WELLPATH IDENTIFICATION

Operator	SYNERGY RESOURCES CORPORATION	Slot	SLOT#04 GOETZEL 4N-30A-M (1873'FNL & 2446'FEL, SEC.29)
Area	COLORADO	Well	GOETZEL 4N-30A-M
Field	WELD COUNTY (NAD83,TRUE NORTH)	Wellbore	GOETZEL 4N-30A-M PWB
Facility	SEC.29-T06N-R66W		

## WELLPATH DATA (159 stations) † = interpolated/extrapolated station

MD [ft]	Inclination [°]	Azimuth [°]	TVD [ft]	Vert Sect [ft]	North [ft]	East [ft]	DLS [°/100ft]	Comments
4220.00†	14.939	19.658	4158.40	-120.33	473.06	168.99	0.00	
4320.00†	14.939	19.658	4255.02	-126.51	497.34	177.66	0.00	
4420.00†	14.939	19.658	4351.64	-132.68	521.62	186.34	0.00	
4520.00†	14.939	19.658	4448.26	-138.86	545.89	195.01	0.00	
4620.00†	14.939	19.658	4544.88	-145.03	570.17	203.68	0.00	
4720.00†	14.939	19.658	4641.50	-151.21	594.44	212.35	0.00	
4820.00†	14.939	19.658	4738.12	-157.38	618.72	221.02	0.00	
4920.00†	14.939	19.658	4834.74	-163.56	643.00	229.70	0.00	
5020.00†	14.939	19.658	4931.36	-169.73	667.27	238.37	0.00	
5120.00†	14.939	19.658	5027.98	-175.91	691.55	247.04	0.00	
5220.00†	14.939	19.658	5124.60	-182.08	715.83	255.71	0.00	
5320.00†	14.939	19.658	5221.22	-188.26	740.10	264.39	0.00	
5420.00†	14.939	19.658	5317.84	-194.43	764.38	273.06	0.00	
5520.00†	14.939	19.658	5414.46	-200.61	788.66	281.73	0.00	
5620.00†	14.939	19.658	5511.08	-206.78	812.93	290.40	0.00	
5720.00†	14.939	19.658	5607.70	-212.96	837.21	299.07	0.00	
5820.00†	14.939	19.658	5704.32	-219.13	861.48	307.75	0.00	
5920.00†	14.939	19.658	5800.94	-225.31	885.76	316.42	0.00	
6020.00†	14.939	19.658	5897.56	-231.48	910.04	325.09	0.00	
6120.00†	14.939	19.658	5994.18	-237.66	934.31	333.76	0.00	
6220.00†	14.939	19.658	6090.80	-243.83	958.59	342.44	0.00	
6317.46	14.939	19.658	6184.97	-249.85	982.25	350.89	0.00	End of Tangent
6320.00†	14.858	18.826	6187.42	-250.00	982.87	351.10	9.00	
6420.00†	14.400	342.672	6284.38	-248.01	1006.92	351.54	9.00	
6520.00†	18.782	314.647	6380.34	-230.55	1030.15	336.35	9.00	
6620.00†	25.630	298.974	6472.95	-198.06	1051.99	305.91	9.00	
6720.00†	33.461	289.898	6559.92	-151.35	1071.89	260.98	9.00	
6820.00†	41.722	284.014	6639.12	-91.55	1089.36	202.65	9.00	
6920.00†	50.200	279.794	6708.59	-20.15	1103.99	132.37	9.00	
7020.00†	58.796	276.512	6766.62	61.10	1115.40	51.86	9.00	
7120.00†	67.462	273.783	6811.78	150.20	1123.31	-36.90	9.00	
7220.00†	76.168	271.378	6842.96	244.95	1127.53	-131.71	9.00	
7320.00†	84.895	269.149	6859.40	343.03	1127.96	-230.24	9.00	
7378.44	90.000	267.881	6862.00†	400.91	1126.45	-288.58	9.00	End of 3D Arc
7420.00†	90.000	267.881	6862.00	442.08	1124.91	-330.12	0.00	
7520.00†	90.000	267.881	6862.00	541.13	1121.21	-430.05	0.00	
7620.00†	90.000	267.881	6862.00	640.17	1117.51	-529.98	0.00	
7720.00†	90.000	267.881	6862.00	739.22	1113.82	-629.91	0.00	
7820.00†	90.000	267.881	6862.00	838.27	1110.12	-729.84	0.00	
7920.00†	90.000	267.881	6862.00	937.31	1106.42	-829.78	0.00	
8020.00†	90.000	267.881	6862.00	1036.36	1102.72	-929.71	0.00	
8120.00†	90.000	267.881	6862.00	1135.41	1099.03	-1029.64	0.00	
8220.00†	90.000	267.881	6862.00	1234.45	1095.33	-1129.57	0.00	
8320.00†	90.000	267.881	6862.00	1333.50	1091.63	-1229.50	0.00	
8420.00†	90.000	267.881	6862.00	1432.55	1087.93	-1329.43	0.00	



# Planned Wellpath Report

GOETZEL 4N-30A-M PWP (REV-A.0)

Page 4 of 7



## REFERENCE WELLPATH IDENTIFICATION

Operator	SYNERGY RESOURCES CORPORATION	Slot	SLOT#04 GOETZEL 4N-30A-M (1873'FNL & 2446'FEL, SEC.29)
Area	COLORADO	Well	GOETZEL 4N-30A-M
Field	WELD COUNTY (NAD83,TRUE NORTH)	Wellbore	GOETZEL 4N-30A-M PWB
Facility	SEC.29-T06N-R66W		

## WELLPATH DATA (159 stations) † = interpolated/extrapolated station

MD [ft]	Inclination [°]	Azimuth [°]	TVD [ft]	Vert Sect [ft]	North [ft]	East [ft]	DLS [°/100ft]	Comments
8520.00†	90.000	267.881	6862.00	1531.59	1084.23	-1429.37	0.00	
8620.00†	90.000	267.881	6862.00	1630.64	1080.54	-1529.30	0.00	
8720.00†	90.000	267.881	6862.00	1729.69	1076.84	-1629.23	0.00	
8820.00†	90.000	267.881	6862.00	1828.73	1073.14	-1729.16	0.00	
8920.00†	90.000	267.881	6862.00	1927.78	1069.44	-1829.09	0.00	
9020.00†	90.000	267.881	6862.00	2026.83	1065.75	-1929.02	0.00	
9120.00†	90.000	267.881	6862.00	2125.87	1062.05	-2028.96	0.00	
9220.00†	90.000	267.881	6862.00	2224.92	1058.35	-2128.89	0.00	
9320.00†	90.000	267.881	6862.00	2323.97	1054.65	-2228.82	0.00	
9420.00†	90.000	267.881	6862.00	2423.01	1050.96	-2328.75	0.00	
9520.00†	90.000	267.881	6862.00	2522.06	1047.26	-2428.68	0.00	
9620.00†	90.000	267.881	6862.00	2621.11	1043.56	-2528.61	0.00	
9720.00†	90.000	267.881	6862.00	2720.15	1039.86	-2628.55	0.00	
9820.00†	90.000	267.881	6862.00	2819.20	1036.16	-2728.48	0.00	
9920.00†	90.000	267.881	6862.00	2918.25	1032.47	-2828.41	0.00	
10020.00†	90.000	267.881	6862.00	3017.29	1028.77	-2928.34	0.00	
10120.00†	90.000	267.881	6862.00	3116.34	1025.07	-3028.27	0.00	
10220.00†	90.000	267.881	6862.00	3215.39	1021.37	-3128.20	0.00	
10320.00†	90.000	267.881	6862.00	3314.44	1017.68	-3228.13	0.00	
10420.00†	90.000	267.881	6862.00	3413.48	1013.98	-3328.07	0.00	
10520.00†	90.000	267.881	6862.00	3512.53	1010.28	-3428.00	0.00	
10620.00†	90.000	267.881	6862.00	3611.58	1006.58	-3527.93	0.00	
10720.00†	90.000	267.881	6862.00	3710.62	1002.88	-3627.86	0.00	
10820.00†	90.000	267.881	6862.00	3809.67	999.19	-3727.79	0.00	
10920.00†	90.000	267.881	6862.00	3908.72	995.49	-3827.72	0.00	
11020.00†	90.000	267.881	6862.00	4007.76	991.79	-3927.66	0.00	
11120.00†	90.000	267.881	6862.00	4106.81	988.09	-4027.59	0.00	
11220.00†	90.000	267.881	6862.00	4205.86	984.40	-4127.52	0.00	
11320.00†	90.000	267.881	6862.00	4304.90	980.70	-4227.45	0.00	
11420.00†	90.000	267.881	6862.00	4403.95	977.00	-4327.38	0.00	
11520.00†	90.000	267.881	6862.00	4503.00	973.30	-4427.31	0.00	
11620.00†	90.000	267.881	6862.00	4602.04	969.60	-4527.25	0.00	
11720.00†	90.000	267.881	6862.00	4701.09	965.91	-4627.18	0.00	
11820.00†	90.000	267.881	6862.00	4800.14	962.21	-4727.11	0.00	
11920.00†	90.000	267.881	6862.00	4899.18	958.51	-4827.04	0.00	
12020.00†	90.000	267.881	6862.00	4998.23	954.81	-4926.97	0.00	
12120.00†	90.000	267.881	6862.00	5097.28	951.12	-5026.90	0.00	
12220.00†	90.000	267.881	6862.00	5196.32	947.42	-5126.84	0.00	
12320.00†	90.000	267.881	6862.00	5295.37	943.72	-5226.77	0.00	
12420.00†	90.000	267.881	6862.00	5394.42	940.02	-5326.70	0.00	
12520.00†	90.000	267.881	6862.00	5493.46	936.33	-5426.63	0.00	
12620.00†	90.000	267.881	6862.00	5592.51	932.63	-5526.56	0.00	
12720.00†	90.000	267.881	6862.00	5691.56	928.93	-5626.49	0.00	
12820.00†	90.000	267.881	6862.00	5790.60	925.23	-5726.42	0.00	
12920.00†	90.000	267.881	6862.00	5889.65	921.53	-5826.36	0.00	



# Planned Wellpath Report

GOETZEL 4N-30A-M PWP (REV-A.0)

Page 5 of 7



## REFERENCE WELLPATH IDENTIFICATION

Operator	SYNERGY RESOURCES CORPORATION	Slot	SLOT#04 GOETZEL 4N-30A-M (1873'FNL & 2446'FEL, SEC.29)
Area	COLORADO	Well	GOETZEL 4N-30A-M
Field	WELD COUNTY (NAD83,TRUE NORTH)	Wellbore	GOETZEL 4N-30A-M PWB
Facility	SEC.29-T06N-R66W		

## WELLPATH DATA (159 stations) † = interpolated/extrapolated station

MD [ft]	Inclination [°]	Azimuth [°]	TVD [ft]	Vert Sect [ft]	North [ft]	East [ft]	DLS [°/100ft]	Comments
13020.00†	90.000	267.881	6862.00	5988.70	917.84	-5926.29	0.00	
13120.00†	90.000	267.881	6862.00	6087.74	914.14	-6026.22	0.00	
13220.00†	90.000	267.881	6862.00	6186.79	910.44	-6126.15	0.00	
13320.00†	90.000	267.881	6862.00	6285.84	906.74	-6226.08	0.00	
13420.00†	90.000	267.881	6862.00	6384.88	903.05	-6326.01	0.00	
13520.00†	90.000	267.881	6862.00	6483.93	899.35	-6425.95	0.00	
13620.00†	90.000	267.881	6862.00	6582.98	895.65	-6525.88	0.00	
13720.00†	90.000	267.881	6862.00	6682.02	891.95	-6625.81	0.00	
13820.00†	90.000	267.881	6862.00	6781.07	888.25	-6725.74	0.00	
13920.00†	90.000	267.881	6862.00	6880.12	884.56	-6825.67	0.00	
14020.00†	90.000	267.881	6862.00	6979.16	880.86	-6925.60	0.00	
14120.00†	90.000	267.881	6862.00	7078.21	877.16	-7025.54	0.00	
14220.00†	90.000	267.881	6862.00	7177.26	873.46	-7125.47	0.00	
14320.00†	90.000	267.881	6862.00	7276.30	869.77	-7225.40	0.00	
14420.00†	90.000	267.881	6862.00	7375.35	866.07	-7325.33	0.00	
14520.00†	90.000	267.881	6862.00	7474.40	862.37	-7425.26	0.00	
14620.00†	90.000	267.881	6862.00	7573.44	858.67	-7525.19	0.00	
14720.00†	90.000	267.881	6862.00	7672.49	854.97	-7625.13	0.00	
14820.00†	90.000	267.881	6862.00	7771.54	851.28	-7725.06	0.00	
14920.00†	90.000	267.881	6862.00	7870.58	847.58	-7824.99	0.00	
15020.00†	90.000	267.881	6862.00	7969.63	843.88	-7924.92	0.00	
15120.00†	90.000	267.881	6862.00	8068.68	840.18	-8024.85	0.00	
15220.00†	90.000	267.881	6862.00	8167.72	836.49	-8124.78	0.00	
15302.31	90.000	267.881	6862.00 <sup>2</sup>	8249.25	833.44	-8207.04	0.00	End of Tangent

## HOLE & CASING SECTIONS

- Ref Wellbore: GOETZEL 4N-30A-M PWB Ref Wellpath: GOETZEL 4N-30A-M PWP (REV-A.0)

String/Diameter	Start MD [ft]	End MD [ft]	Interval [ft]	Start TVD [ft]	End TVD [ft]	Start N/S [ft]	Start E/W [ft]	End N/S [ft]	End E/W [ft]
13.5in Open Hole	20.00	1700.00	1680.00	20.00	1700.00	0.00	0.00	0.00	0.00
9.625in Casing Surface	20.00	1700.00	1680.00	20.00	1700.00	0.00	0.00	0.00	0.00
8.5in Open Hole	1700.00	15302.31	13602.31	1700.00	6862.00	0.00	0.00	833.44	-8207.04



# Planned Wellpath Report

GOETZEL 4N-30A-M PWP (REV-A.0)

Page 6 of 7



## REFERENCE WELLPATH IDENTIFICATION

Operator	SYNERGY RESOURCES CORPORATION	Slot	SLOT#04 GOETZEL 4N-30A-M (1873'FNL & 2446'FEL, SEC.29)
Area	COLORADO	Well	GOETZEL 4N-30A-M
Field	WELD COUNTY (NAD83,TRUE NORTH)	Wellbore	GOETZEL 4N-30A-M PWB
Facility	SEC.29-T06N-R66W		

## TARGETS

Name	MD [ft]	TVD [ft]	North [ft]	East [ft]	Grid East [US ft]	Grid North [US ft]	Latitude	Longitude	Shape
SEC.29-T06N-R66W NORTHERN		0.00	60.09	0.25	3194449.66	1411671.99	40°27'40.817"N	104°48'04.259"W	polygon
SEC.29-T06N-R66W SOUTHERN		0.00	60.09	0.25	3194449.66	1411671.99	40°27'40.817"N	104°48'04.259"W	polygon
SEC.30-T06N-R66W NORTHERN		0.00	60.09	0.25	3194449.66	1411671.99	40°27'40.817"N	104°48'04.259"W	polygon
SEC.30-T06N-R66W SOUTHERN		0.00	60.09	0.25	3194449.66	1411671.99	40°27'40.817"N	104°48'04.259"W	polygon
2) GOETZEL 4N-30A-M BHL REV-1 (746'FNL & 510'FWL, SEC.29)	15302.31	6862.00	833.44	-8207.04	3186236.85	1412380.61	40°27'48.445"N	104°49'50.441"W	circle
1) GOETZEL 4N-30A-M TOP REV-1 (741'FNL & 2589'FWL, SEC.29)	7378.44	6862.00	1126.45	-288.58	3194152.45	1412735.99	40°27'51.354"N	104°48'07.996"W	circle

## SURVEY PROGRAM -

Ref Wellbore: GOETZEL 4N-30A-M PWB      Ref Wellpath: GOETZEL 4N-30A-M PWP (REV-A.0)

Start MD [ft]	End MD [ft]	Positional Uncertainty Model	Log Name/Comment	Wellbore
20.00	1700.00	Custom BHI NaviTrak (Standard Rotating) (Rockies 0.03Gt model)		GOETZEL 4N-30A-M PWB
1700.00	15302.31	Custom BHI AutoTrak Curve (Short) (Rockies 0.03Gt model)		GOETZEL 4N-30A-M PWB



# Planned Wellpath Report

GOETZEL 4N-30A-M PWP (REV-A.0)

Page 7 of 7



## REFERENCE WELLPATH IDENTIFICATION

Operator	SYNERGY RESOURCES CORPORATION	Slot	SLOT#04 GOETZEL 4N-30A-M (1873'FNL & 2446'FEL, SEC.29)
Area	COLORADO	Well	GOETZEL 4N-30A-M
Field	WELD COUNTY (NAD83,TRUE NORTH)	Wellbore	GOETZEL 4N-30A-M PWB
Facility	SEC.29-T06N-R66W		

## DESIGN COMMENTS

MD [ft]	Inclination [°]	Azimuth [°]	TVD [ft]	Comment
20.00	0.000	19.658	20.00	Tie On
1900.00	0.000	19.658	1900.00	End of Tangent
2646.94	14.939	19.658	2638.51	End of Build
6317.46	14.939	19.658	6184.97	End of Tangent
7378.44	90.000	267.881	6862.00	End of 3D Arc
15302.31	90.000	267.881	6862.00	End of Tangent