

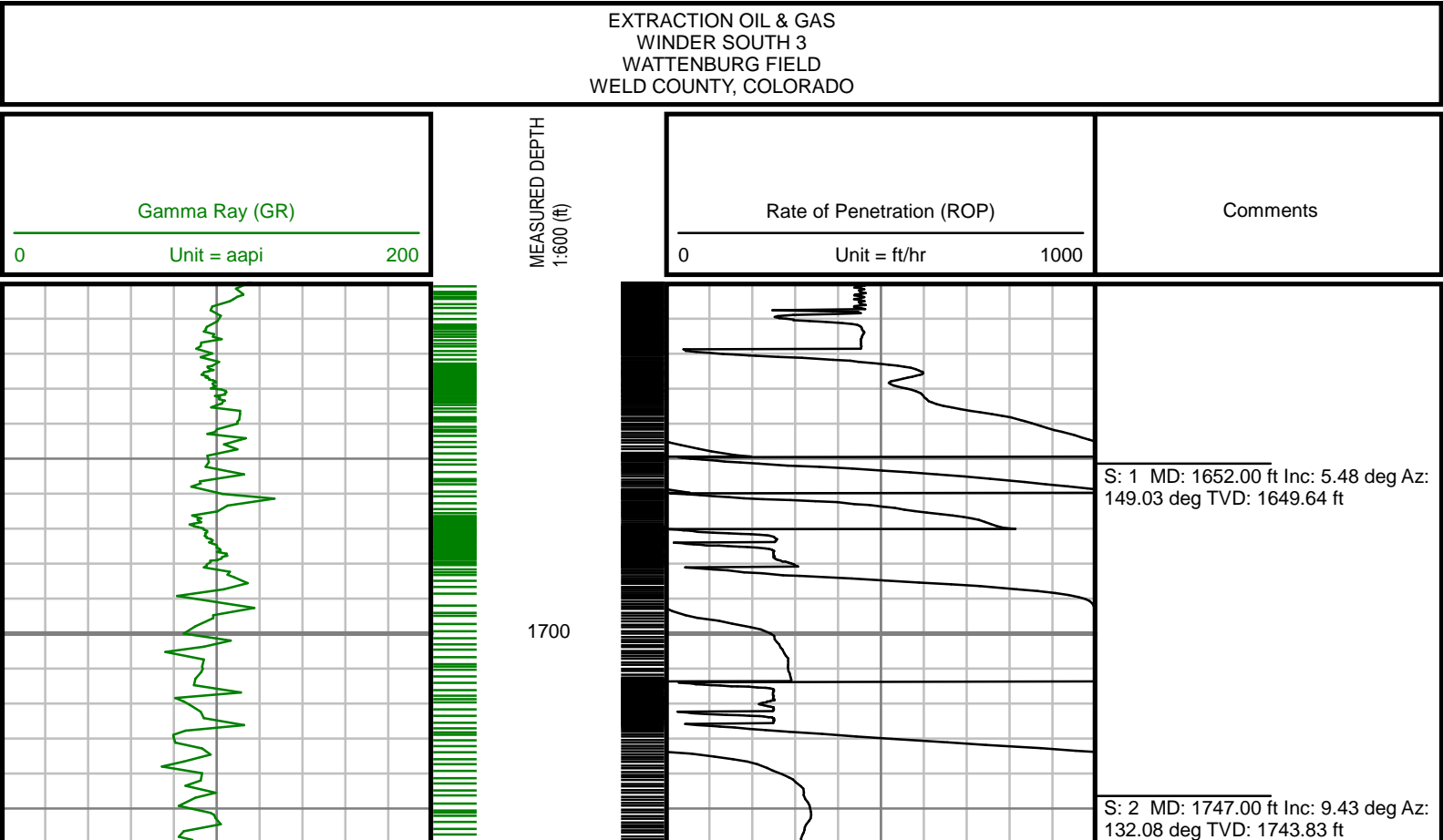
2" = 100' FEET MD

COMPANY : EXTRACTION OIL & GAS WELL : WINDER SOUTH 3 FIELD : WATTENBURG COUNTY : WELD STATE : CO COUNTRY : USA UWI : 05-12343-408-00										COMPANY : EXTRACTION OIL & GAS WELL : WINDER SOUTH 3 FIELD : WATTENBURG COUNTY : WELD STATE : CO COUNTRY : USA UWI : 05-12343-408-00									
DEPTH REF. : GL 4854' & KB 25' REF. HEIGHT : 25.000 ft GL 4854' & KB 25' to Ground Level GROUND LEVEL : 4854.000 ft G.I. to MEAN SEA LEVEL										WELL LOCATION LAT:40.5026740°N LONG:104.8906270°W N:1426546.90 ft E:3169458.32 ft SEC:9 TWP:1N6 RANGE:R67W DIRECTIONAL ROP									
BOREHOLE RECORD										DEVIATION RECORD									
HOLE SIZE in		FROM ft		TO ft		INCLINATION deg		FROM ft		TO ft									
12.25		0		1550		0 - 6.60		0		1550									
7.875		1550		16968		6.60 - 90		1550		7828									
CASING RECORD																			
CASING SIZE in		FROM ft		TO ft															
9.625		0		1564															
DRILLING CO.: PATTERSON / UTI RIG: 346 LMD UNIT NO.: MWD-00029-DISTRICT: CASPER SPUD DATE: 8/29/2016 LMD START DATE: 8/29/2016 DEPTH: 1600 ft LMD END DATE: 9/2/2016 DEPTH: 16922 ft TOTAL DEPTH: 15322 ft																			

Run Data						
RUN NUMBER	1	2	3	4	5	
START DATE	8/29/2016	8/29/2016	8/29/2016	8/30/2016	8/31	
START TIME	06:00	16:00	23:00	19:30	04:30	
END DATE	8/29/2016	8/29/2016	8/30/2016	8/31/2016	9/2/2016	
END TIME	13:00	19:00	15:30	01:30	1730	
DEPTH IN (ft)	1564	2563	3225	6920	7199	
DEPTH OUT (ft)	2563	3225	6920	7199	16968	
LOG TOP (ft)	1600	2517	3178	6873	7152	
LOG BOTTOM (ft)	2517	3178	6873	7152	16922	
HOLE SIZE (in)	7.875	7.875	7.875	7.875	7.875	
MUD DATA @ (ft)	2565	2565	6763	6763	7407	
MUD TYPE	OBM	OBM	OBM	OBM	OBM	
DENSITY (lb / gal)	9.2	9.2	8.7	8.7	8.75	
VISCOSITY (s / qt)	48	48	44	44	48	
pH	-	-	-	-	-	
FLUID LOSS (cm3 / 30)	6.8	6.8	6.8	6.8	6.6	
SALINITY (ppm)	182,739	182,739	167,527	167,527	135,337	
Rm (ohmm @ deg F)	-	-	-	-	-	
Rmf (ohmm @ deg F)	-	-	-	-	-	
MAX TEMP (deg F)	124	124	197	197	205	
Rm @ MAX TEMP (ohmm)	-	-	-	-	-	
LWD ENGINEER #1	RICK PERRY	RICK PERRY	RICK PERRY	RICK PERRY	RICK PERRY	
LWD ENGINEER #2	BRUCE FRANTZ	BRUCE FRANTZ	BRUCE FRANTZ	SAM NEJAD	SAM NEJAD	
LWD ENGINEER #3			SAM NEJAD			
LOG WTINNESS #1	JARED ROUSE	JARED ROUSE	JARED ROUSE	JARED ROUSE	JARED ROUSE	
LOG WTINNESS #2						

Remarks
EXTRACTION OIL & GAS PRODUCTION AFE# 14095
SCIENTIFIC DRILLING INTERNATIONAL JOB# 381335
ALL REFERENCES IN THE DEPTH TRACK ARE AT BIT DEPTH.
ALL DATA IS MEMORY DATA UNLESS STATED OTHERWISE.
FLAT AVERAGE FILTER OF 1.00 FT APPLIED TO GAMMA RAY CURVE
RUN #1 : EM-5 CONTROLLER SN# 850 / MWD EYE SN# 0645 / GAMMA SN# 1025
BIT - SENSOR / MWD EYE = 59.05' GAMMA = 46.4'
RUN #2 : EM-5 CONTROLLER SN# 1249 / MWD EYE SN# 078 / GAMMA SN# 1204
BIT - SENSOR / MWD EYE = 59.05' GAMMA = 46.4'
RUN # : MP-6 CONTROLLER SN# 391 / MWD EYE SN# 182 / GAMMA SN# 1335
BIT - SENSOR / MWD EYE = 58.49' GAMMA = 45.9'
RUN #4 : MP-6 CONTROLLER SN# 391 / MWD EYE SN# 182 / GAMMA SN# 1335
BIT - SENSOR / MWD EYE = 60.18' GAMMA = 47.59
RUN #5 : MP-6 CONTROLLER SN# 391 / MWD EYE SN# 182 / GAMMA SN# 1335
BIT - SENSOR / MWD EYE = 58.49' GAMMA = 45.9'
MNEMONICS LIST:
GR = GAMMA RAY
ROP = RATE OF PENETRATION

All interpretations are opinions based on inferences from electrical or other measurements and we cannot, and do not guarantee the accuracy or correctness of any interpretations, and we shall not, except in the case of gross or willful negligence on our part, be liable or responsible for any loss, costs, damages or expenses incurred or sustained by anyone resulting from any interpretation made by any of our officers, agents or employees. These interpretations are also subject to our general terms and conditions as set out in our current price schedule.





1800

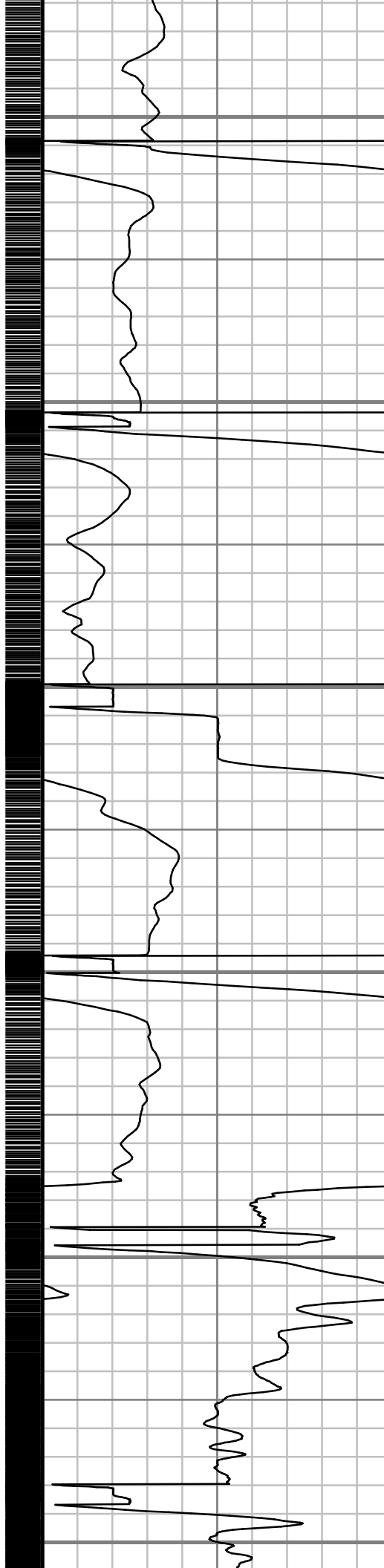
1900

2000

2100

2200

2300



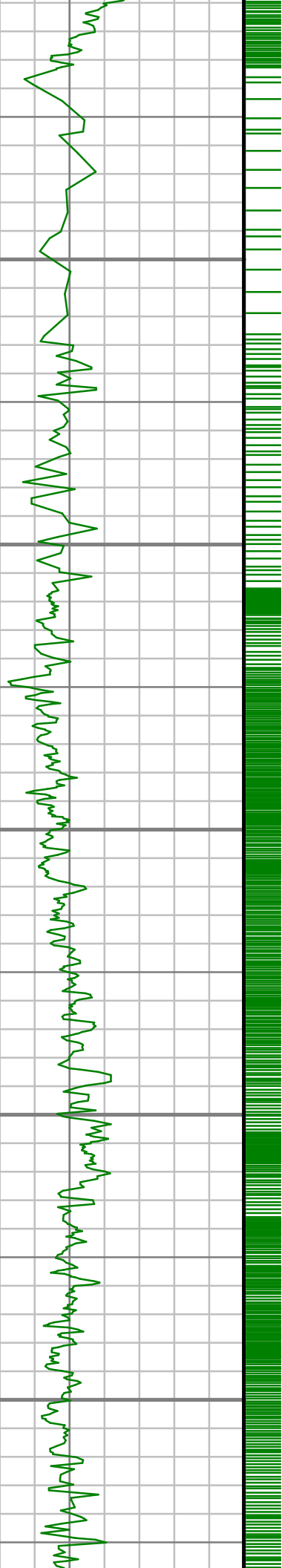
S: 3 MD: 1841.00 ft Inc: 8.94 deg Az: 132.17 deg TVD: 1836.62 ft

S: 4 MD: 1935.00 ft Inc: 9.87 deg Az: 129.46 deg TVD: 1929.36 ft

S: 5 MD: 2030.00 ft Inc: 11.03 deg Az: 136.48 deg TVD: 2022.78 ft

S: 6 MD: 2124.00 ft Inc: 10.14 deg Az: 143.76 deg TVD: 2115.19 ft

S: 7 MD: 2219.00 ft Inc: 9.38 deg Az: 141.89 deg TVD: 2208.81 ft



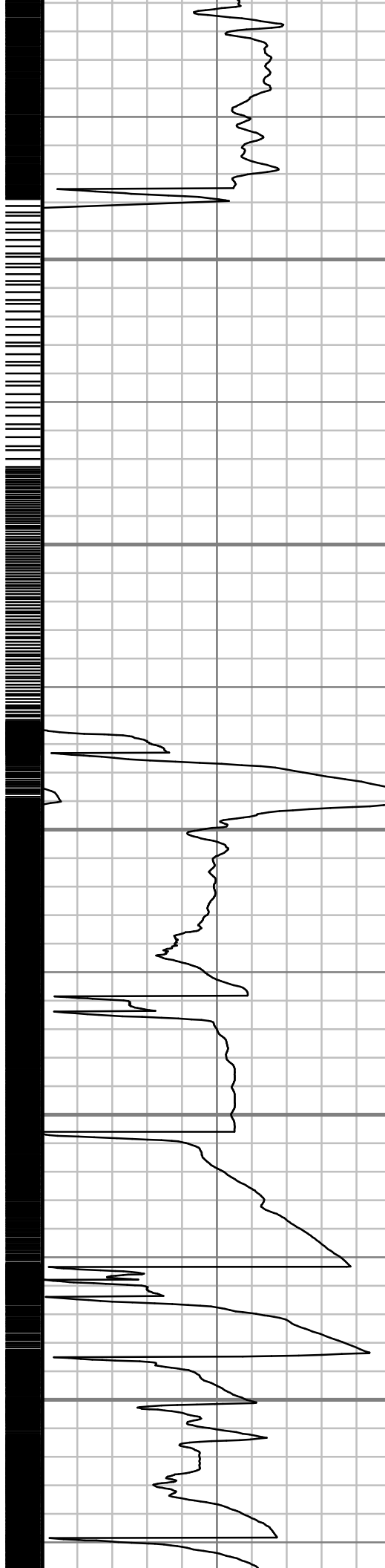
2400

2500

2600

2700

2800



S: 8 MD: 2314.00 ft Inc: 9.06 deg Az: 153.75 deg TVD: 2302.59 ft

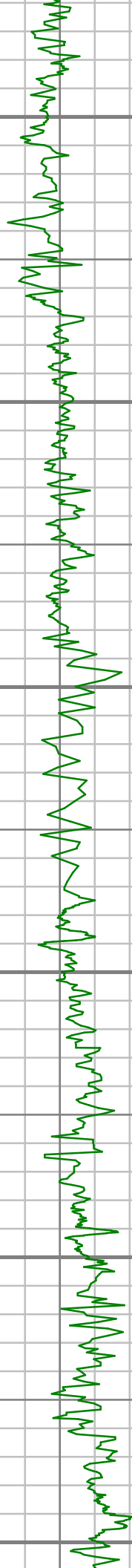
S: 9 MD: 2408.00 ft Inc: 8.78 deg Az: 153.58 deg TVD: 2395.46 ft

S: 10 MD: 2502.00 ft Inc: 8.28 deg Az: 154.28 deg TVD: 2488.42 ft

S: 11 MD: 2597.00 ft Inc: 10.35 deg Az: 155.83 deg TVD: 2582.16 ft

S: 12 MD: 2692.00 ft Inc: 10.30 deg Az: 154.01 deg TVD: 2675.62 ft

S: 13 MD: 2786.00 ft Inc: 10.26 deg Az: 145.35 deg TVD: 2768.12 ft



2900

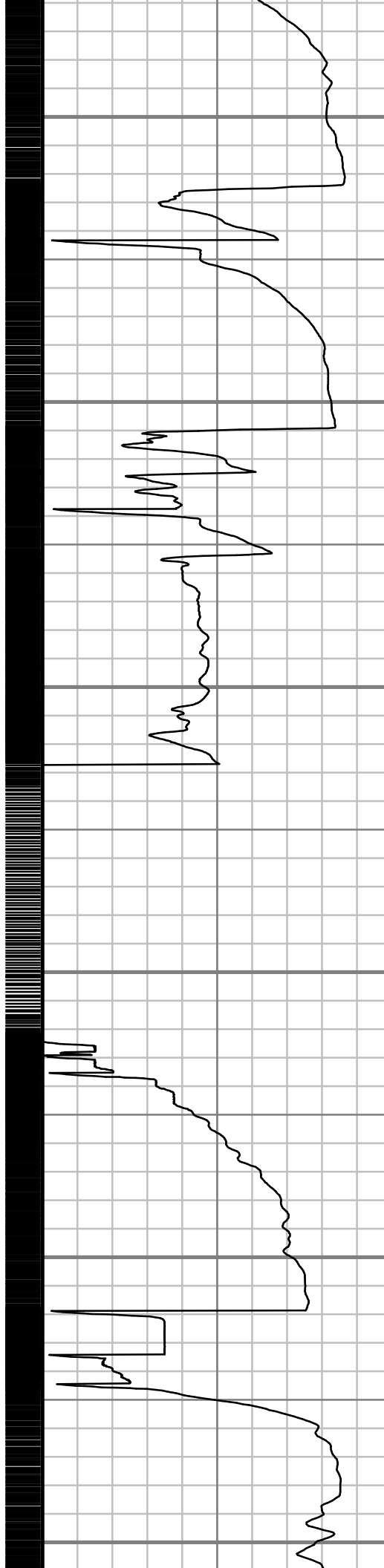
3000

3100

3200

3300

3400



S: 14 MD: 2881.00 ft Inc: 9.52 deg
Az: 147.20 deg TVD: 2861.70 ft

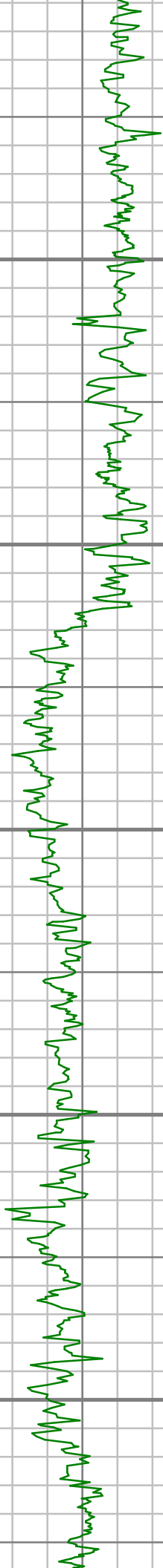
S: 15 MD: 2975.00 ft Inc: 9.23 deg
Az: 145.67 deg TVD: 2954.45 ft

S: 16 MD: 3069.00 ft Inc: 7.94 deg
Az: 149.41 deg TVD: 3047.39 ft

S: 17 MD: 3164.00 ft Inc: 6.89 deg
Az: 152.34 deg TVD: 3141.60 ft

S: 18 MD: 3258.00 ft Inc: 7.30 deg
Az: 148.93 deg TVD: 3234.88 ft

S: 19 MD: 3352.00 ft Inc: 8.03 deg
Az: 142.35 deg TVD: 3328.04 ft



3500

3600

3700

3800

3900



S: 20 MD: 3447.00 ft Inc: 8.85 deg
Az: 140.07 deg TVD: 3422.01 ft

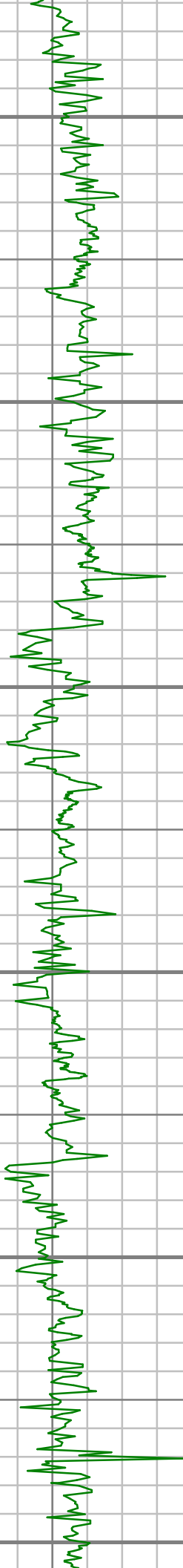
S: 21 MD: 3542.00 ft Inc: 10.23 deg
Az: 141.04 deg TVD: 3515.69 ft

S: 22 MD: 3637.00 ft Inc: 10.97 deg
Az: 150.37 deg TVD: 3609.08 ft

S: 23 MD: 3731.00 ft Inc: 11.23 deg
Az: 150.17 deg TVD: 3701.32 ft

S: 24 MD: 3826.00 ft Inc: 11.03 deg
Az: 152.05 deg TVD: 3794.53 ft

S: 25 MD: 3921.00 ft Inc: 11.03 deg
Az: 151.52 deg TVD: 3887.78 ft



4000

4100

4200

4300

4400

4500



S: 26 MD: 4016.00 ft Inc: 10.20 deg
Az: 154.87 deg TVD: 3981.15 ft

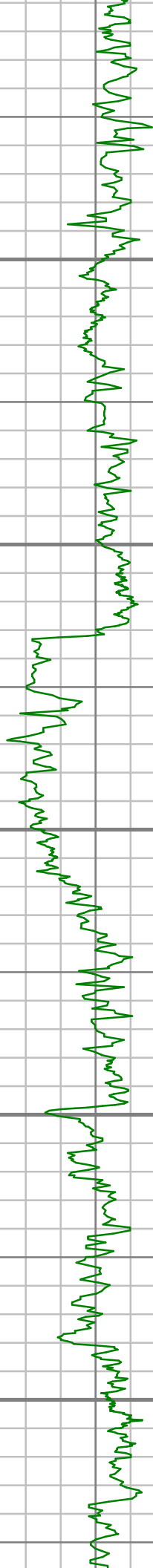
S: 27 MD: 4111.00 ft Inc: 9.50 deg
Az: 150.12 deg TVD: 4074.75 ft

S: 28 MD: 4205.00 ft Inc: 8.69 deg
Az: 145.56 deg TVD: 4167.57 ft

S: 29 MD: 4299.00 ft Inc: 8.93 deg
Az: 148.30 deg TVD: 4260.46 ft

S: 30 MD: 4394.00 ft Inc: 10.62 deg
Az: 150.59 deg TVD: 4354.08 ft

S: 31 MD: 4488.00 ft Inc: 10.52 deg
Az: 152.47 deg TVD: 4446.48 ft



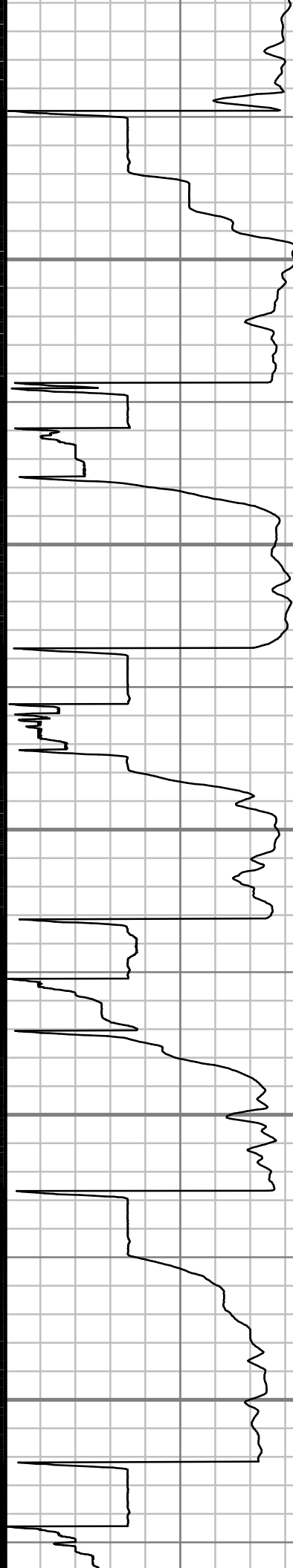
4600

4700

4800

4900

5000



S: 32 MD: 4582.00 ft Inc: 8.56 deg
Az: 155.19 deg TVD: 4539.18 ft

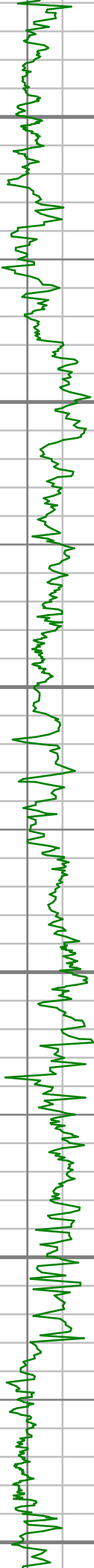
S: 33 MD: 4677.00 ft Inc: 8.83 deg
Az: 145.46 deg TVD: 4633.09 ft

S: 34 MD: 4772.00 ft Inc: 9.39 deg
Az: 140.73 deg TVD: 4726.90 ft

S: 35 MD: 4866.00 ft Inc: 11.19 deg
Az: 141.28 deg TVD: 4819.38 ft

S: 36 MD: 4961.00 ft Inc: 10.95 deg
Az: 142.27 deg TVD: 4912.61 ft

S: 37 MD: 5056.00 ft Inc: 11.30 deg



5100

5200

5300

5400

5500

5600



S: 37 MD: 5050.00 ft Inc: 11.50 deg
Az: 142.66 deg TVD: 5005.83 ft

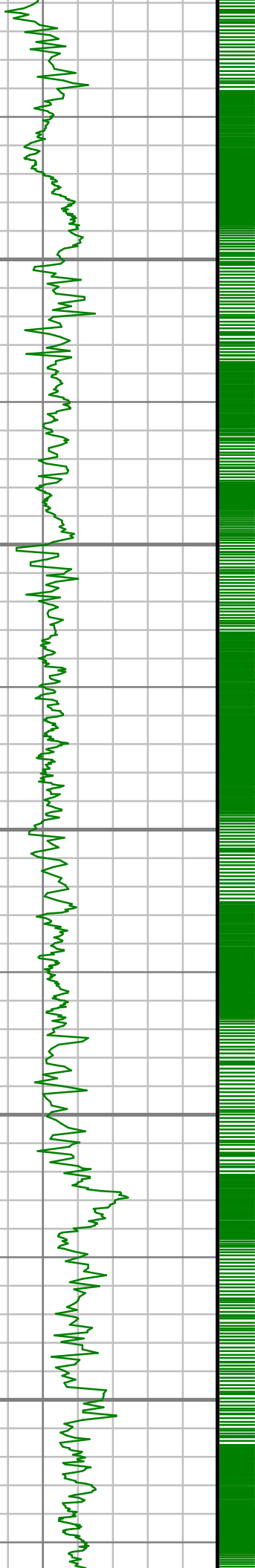
S: 38 MD: 5151.00 ft Inc: 11.20 deg
Az: 154.37 deg TVD: 5099.01 ft

S: 39 MD: 5245.00 ft Inc: 9.74 deg
Az: 156.11 deg TVD: 5191.45 ft

S: 40 MD: 5340.00 ft Inc: 8.49 deg
Az: 149.64 deg TVD: 5285.25 ft

S: 41 MD: 5435.00 ft Inc: 7.80 deg
Az: 143.15 deg TVD: 5379.29 ft

S: 42 MD: 5530.00 ft Inc: 8.56 deg
Az: 137.30 deg TVD: 5473.32 ft



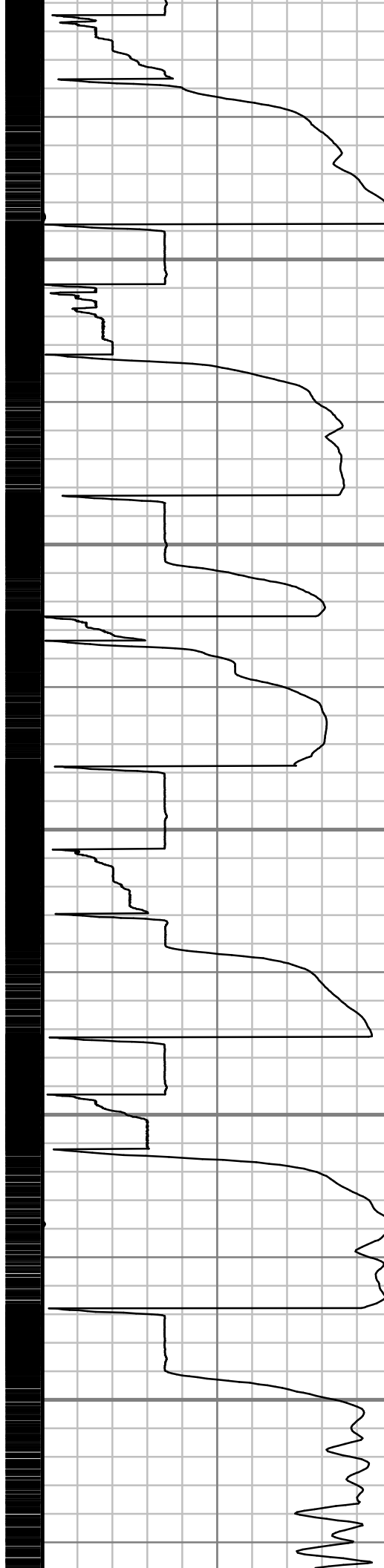
5700

5800

5900

6000

6100



S: 43 MD: 5625.00 ft Inc: 8.49 deg
Az: 140.47 deg TVD: 5567.28 ft

S: 44 MD: 5719.00 ft Inc: 9.76 deg
Az: 149.21 deg TVD: 5660.09 ft

S: 45 MD: 5814.00 ft Inc: 9.18 deg
Az: 152.78 deg TVD: 5753.79 ft

S: 46 MD: 5909.00 ft Inc: 9.48 deg
Az: 154.89 deg TVD: 5847.54 ft

S: 47 MD: 6003.00 ft Inc: 11.23 deg
Az: 154.44 deg TVD: 5940.01 ft

S: 48 MD: 6098.00 ft Inc: 9.48 deg
Az: 153.48 deg TVD: 6033.46 ft



6200

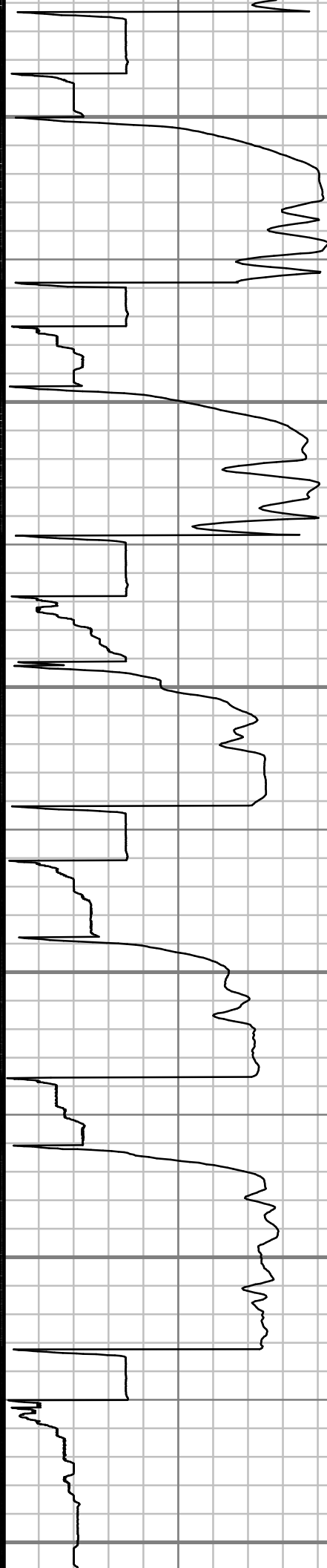
6300

6400

6500

6600

6700



S: 49 MD: 6192.00 ft Inc: 8.89 deg
Az: 150.96 deg TVD: 6126.25 ft

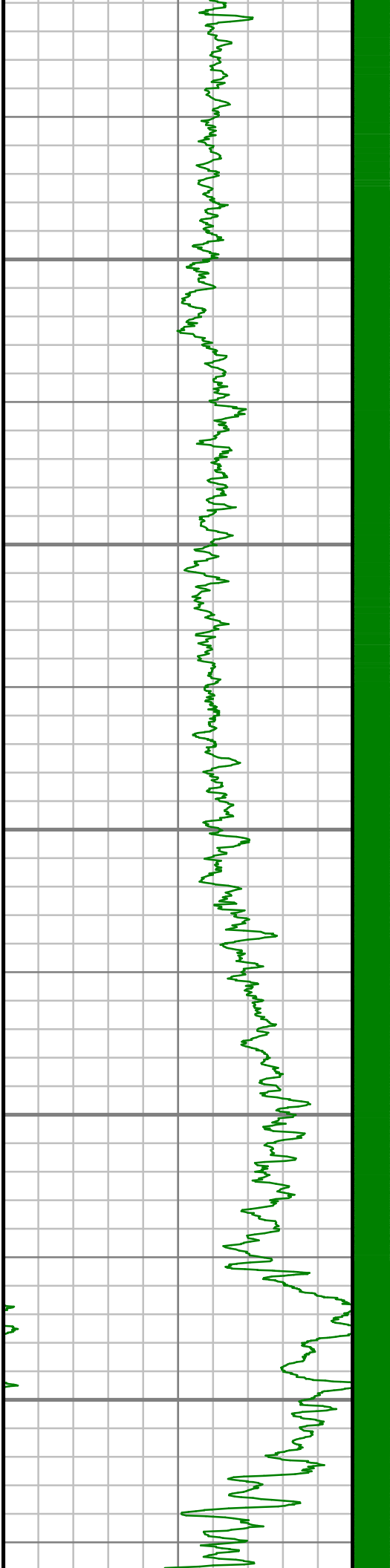
S: 50 MD: 6287.00 ft Inc: 9.54 deg
Az: 148.51 deg TVD: 6220.02 ft

S: 51 MD: 6381.00 ft Inc: 9.62 deg
Az: 149.48 deg TVD: 6312.71 ft

S: 52 MD: 6476.00 ft Inc: 9.95 deg
Az: 149.07 deg TVD: 6406.33 ft

S: 53 MD: 6570.00 ft Inc: 11.28 deg
Az: 149.20 deg TVD: 6498.72 ft

S: 54 MD: 6665.00 ft Inc: 9.84 deg
Az: 159.47 deg TVD: 6592.12 ft



6800

6900

7000

7100

7200



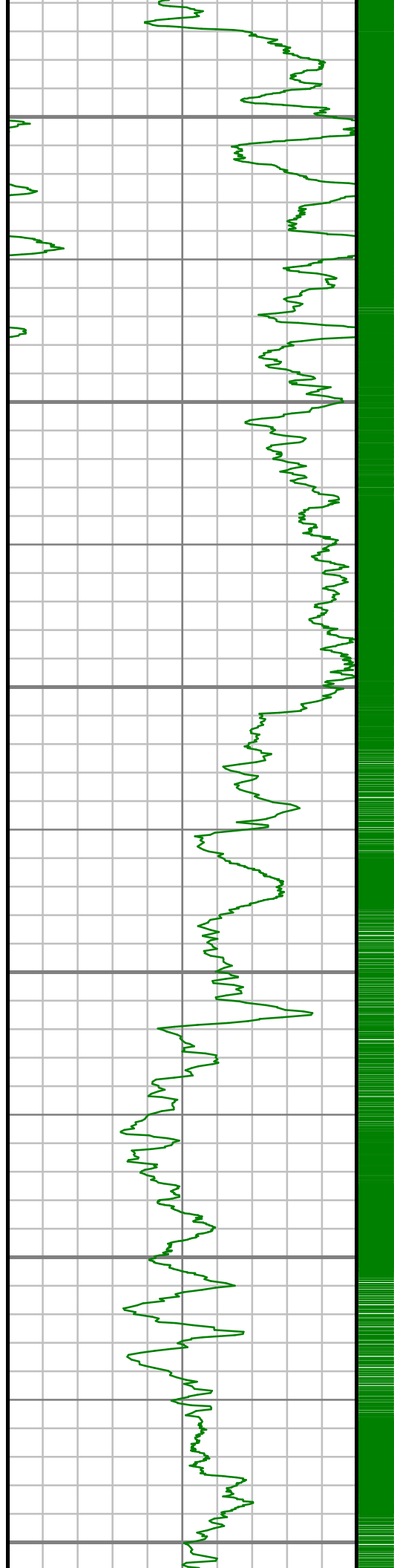
S: 55 MD: 6759.00 ft Inc: 21.24 deg
Az: 187.74 deg TVD: 6682.64 ft

S: 56 MD: 6854.00 ft Inc: 31.07 deg
Az: 205.16 deg TVD: 6767.93 ft

S: 57 MD: 6948.00 ft Inc: 37.75 deg
Az: 228.14 deg TVD: 6845.77 ft

S: 58 MD: 7043.00 ft Inc: 43.05 deg
Az: 248.70 deg TVD: 6918.41 ft

S: 59 MD: 7137.00 ft Inc: 47.87 deg
Az: 268.82 deg TVD: 6984.67 ft



7300

7400

7500

7600

7700

7800



S: 60 MD: 7261.00 ft Inc: 61.05 deg
Az: 273.78 deg TVD: 7056.62 ft

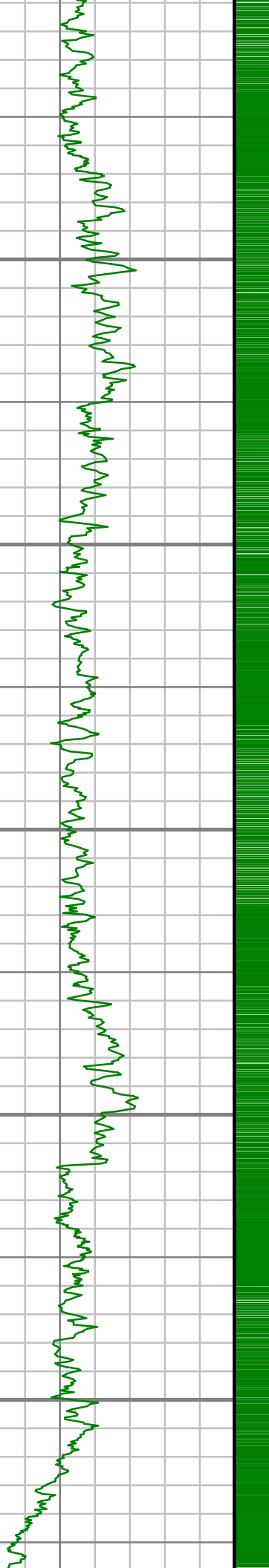
S: 61 MD: 7356.00 ft Inc: 74.95 deg
Az: 281.43 deg TVD: 7092.16 ft

S: 62 MD: 7450.00 ft Inc: 82.12 deg
Az: 285.13 deg TVD: 7110.84 ft

S: 63 MD: 7545.00 ft Inc: 83.88 deg
Az: 278.49 deg TVD: 7122.42 ft

S: 64 MD: 7639.00 ft Inc: 82.81 deg
Az: 276.33 deg TVD: 7133.32 ft

S: 65 MD: 7734.00 ft Inc: 84.28 deg
Az: 274.30 deg TVD: 7144.00 ft



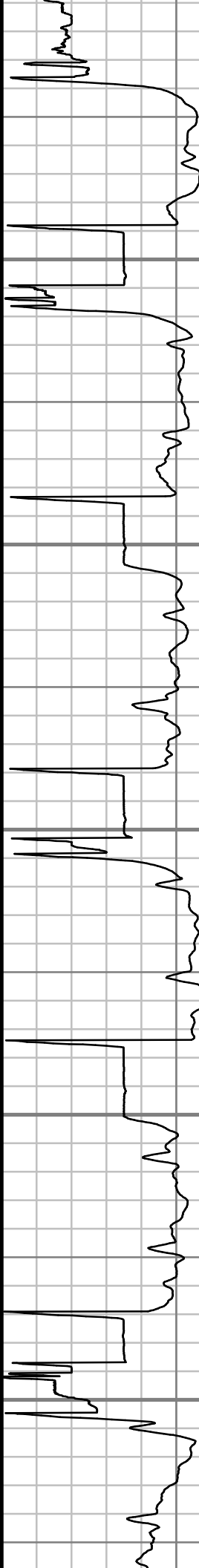
7900

8000

8100

8200

8300



S: 66 MD: 7828.00 ft Inc: 88.96 deg
Az: 269.80 deg TVD: 7149.54 ft

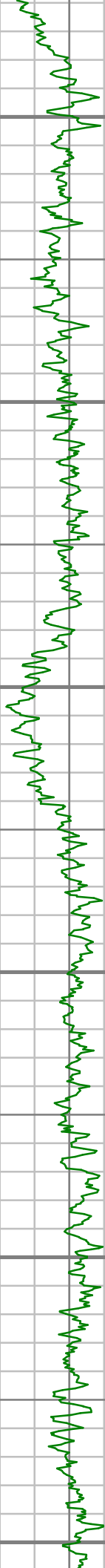
S: 67 MD: 7923.00 ft Inc: 91.14 deg
Az: 268.99 deg TVD: 7149.46 ft

S: 68 MD: 8018.00 ft Inc: 91.58 deg
Az: 268.54 deg TVD: 7147.20 ft

S: 69 MD: 8112.00 ft Inc: 91.21 deg
Az: 268.60 deg TVD: 7144.92 ft

S: 70 MD: 8207.00 ft Inc: 91.51 deg
Az: 268.39 deg TVD: 7142.67 ft

S: 71 MD: 8301.00 ft Inc: 91.51 deg
Az: 268.97 deg TVD: 7140.19 ft



8400

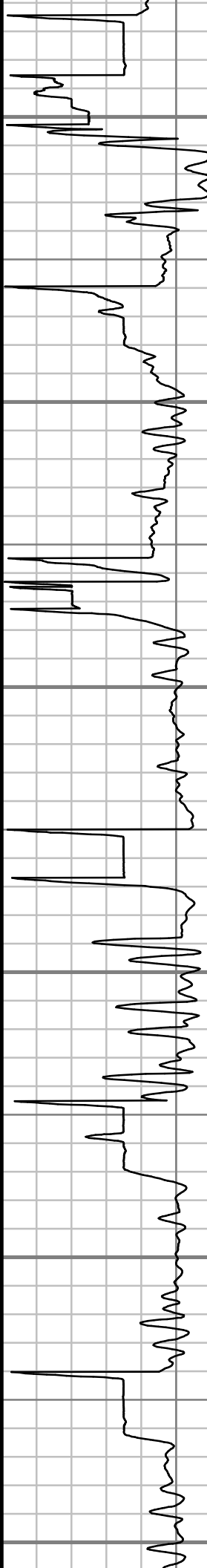
8500

8600

8700

8800

8900



S: 72 MD: 8396.00 ft Inc: 90.00 deg
Az: 270.07 deg TVD: 7138.94 ft

S: 73 MD: 8490.00 ft Inc: 90.77 deg
Az: 271.10 deg TVD: 7138.30 ft

S: 74 MD: 8585.00 ft Inc: 88.86 deg
Az: 270.25 deg TVD: 7138.61 ft

S: 75 MD: 8679.00 ft Inc: 88.79 deg
Az: 270.26 deg TVD: 7140.53 ft

S: 76 MD: 8774.00 ft Inc: 89.26 deg
Az: 269.38 deg TVD: 7142.15 ft

S: 77 MD: 8868.00 ft Inc: 90.17 deg
Az: 269.98 deg TVD: 7142.62 ft



9000

9100

9200

9300

9400



S: 78 MD: 8963.00 ft Inc: 90.77 deg
Az: 270.20 deg TVD: 7141.84 ft

S: 79 MD: 9057.00 ft Inc: 91.34 deg
Az: 269.61 deg TVD: 7140.10 ft

S: 80 MD: 9152.00 ft Inc: 90.64 deg
Az: 270.76 deg TVD: 7138.46 ft

S: 81 MD: 9246.00 ft Inc: 90.97 deg
Az: 270.77 deg TVD: 7137.14 ft

S: 82 MD: 9341.00 ft Inc: 91.95 deg
Az: 269.83 deg TVD: 7134.72 ft

S: 83 MD: 9435.00 ft Inc: 90.40 deg
Az: 269.37 deg TVD: 7132.79 ft



9500

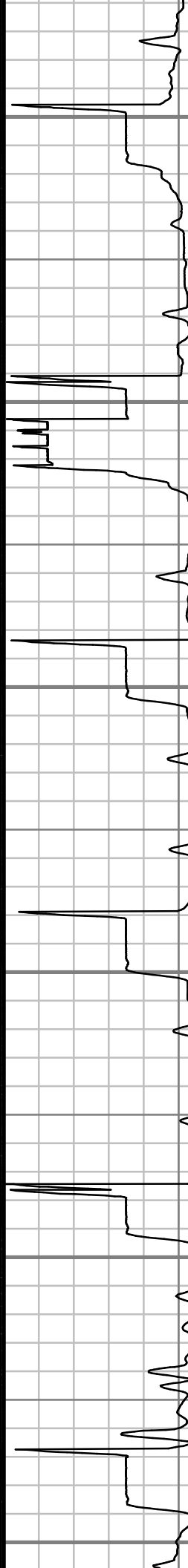
9600

9700

9800

9900

10000



S: 84 MD: 9530.00 ft Inc: 91.64 deg
Az: 270.97 deg TVD: 7131.10 ft

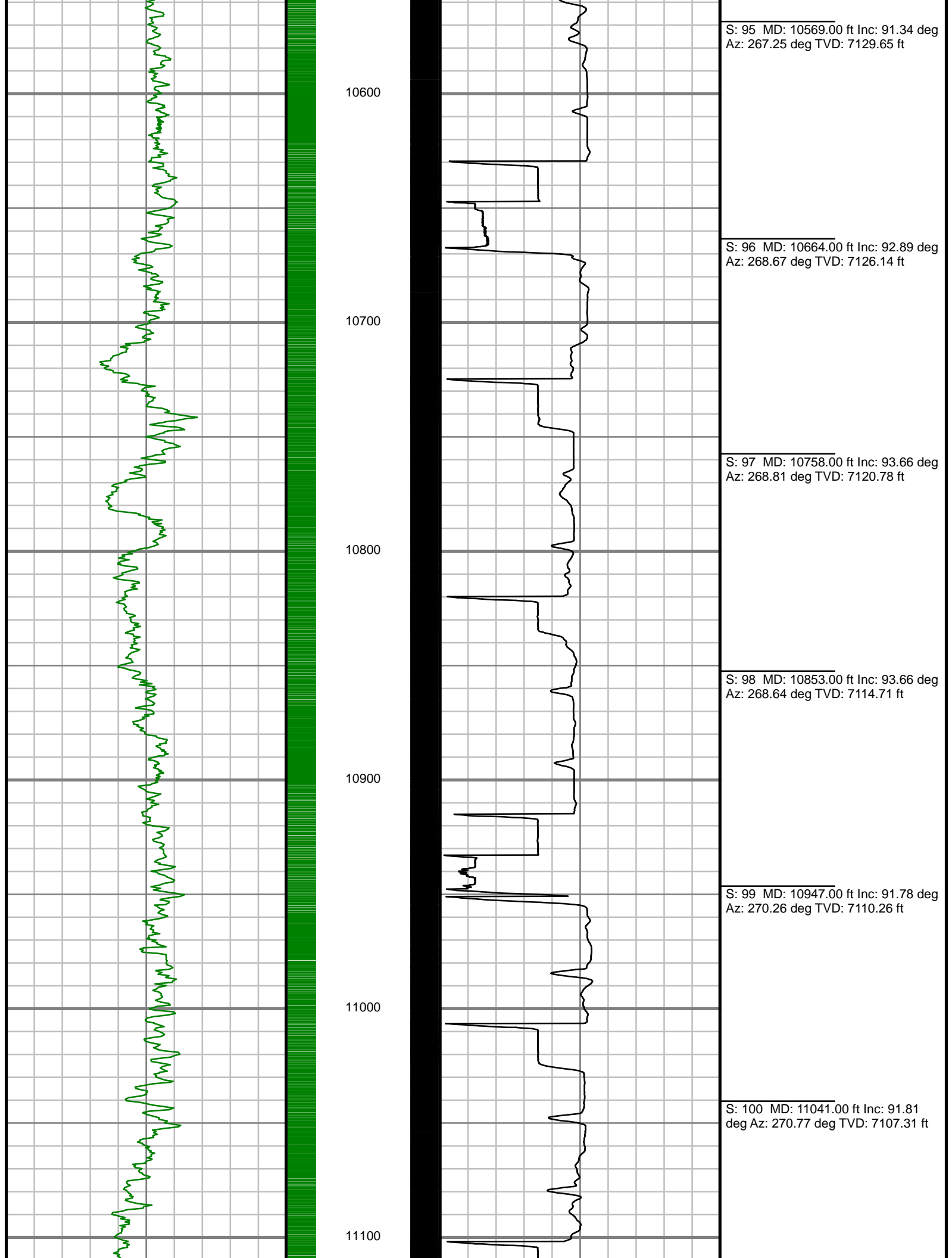
S: 85 MD: 9624.00 ft Inc: 90.40 deg
Az: 271.35 deg TVD: 7129.42 ft

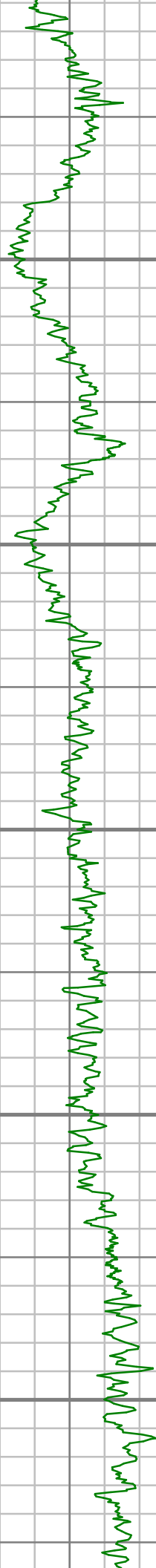
S: 86 MD: 9719.00 ft Inc: 90.54 deg
Az: 270.89 deg TVD: 7128.64 ft

S: 87 MD: 9813.00 ft Inc: 90.67 deg
Az: 270.82 deg TVD: 7127.65 ft

S: 88 MD: 9908.00 ft Inc: 90.10 deg
Az: 271.22 deg TVD: 7127.01 ft

S: 89 MD: 10002.00 ft Inc: 89.97 deg





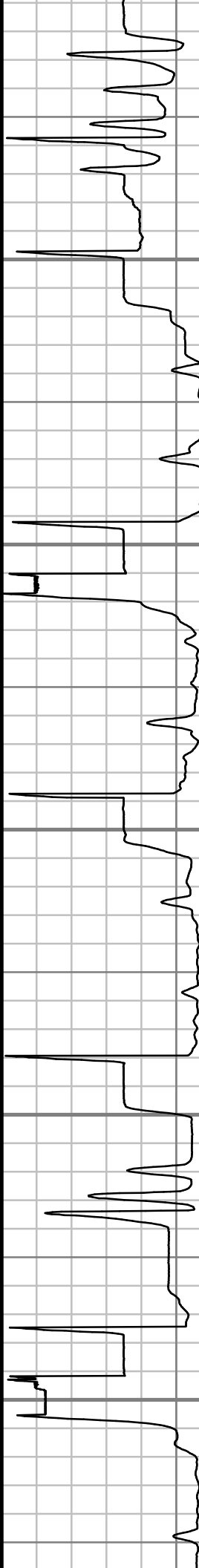
11200

11300

11400

11500

11600



S: 101 MD: 11136.00 ft Inc: 91.27 deg
Az: 270.20 deg TVD: 7104.75 ft

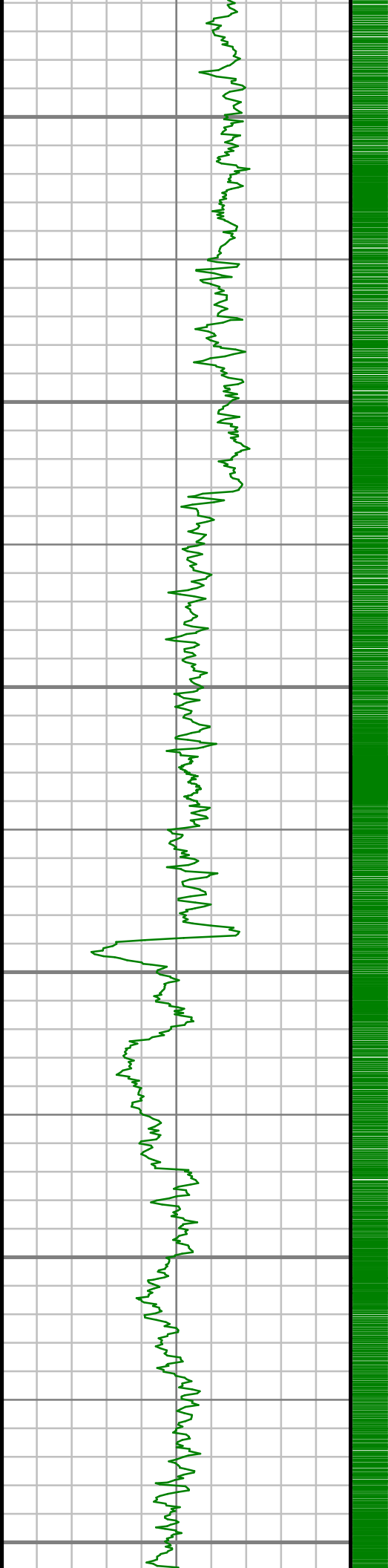
S: 102 MD: 11230.00 ft Inc: 91.14
deg Az: 269.99 deg TVD: 7102.77 ft

S: 103 MD: 11325.00 ft Inc: 91.85
deg Az: 270.62 deg TVD: 7100.30 ft

S: 104 MD: 11420.00 ft Inc: 92.22
deg Az: 270.58 deg TVD: 7096.93 ft

S: 105 MD: 11514.00 ft Inc: 91.71
deg Az: 270.37 deg TVD: 7093.71 ft

S: 106 MD: 11609.00 ft Inc: 93.22
deg Az: 271.01 deg TVD: 7089.62 ft



11700

11800

11900

12000

12100

12200



S: 107 MD: 11703.00 ft Inc: 93.59
deg Az: 271.80 deg TVD: 7084.03 ft

S: 108 MD: 11797.00 ft Inc: 91.85
deg Az: 270.14 deg TVD: 7079.57 ft

S: 109 MD: 11891.00 ft Inc: 91.68
deg Az: 270.69 deg TVD: 7076.68 ft

S: 110 MD: 11986.00 ft Inc: 93.36 deg
Az: 270.06 deg TVD: 7072.51 ft

S: 111 MD: 12081.00 ft Inc: 93.29 deg
Az: 270.23 deg TVD: 7067.00 ft

S: 112 MD: 12175.00 ft Inc: 93.62
deg Az: 270.64 deg TVD: 7061.33 ft



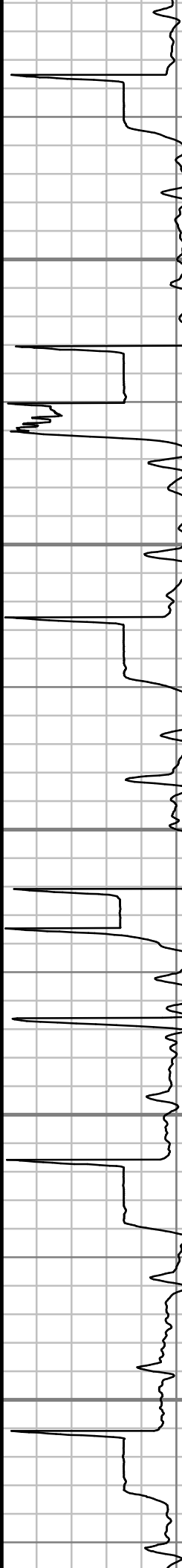
12300

12400

12500

12600

12700



S: 113 MD: 12269.00 ft Inc: 92.75
deg Az: 271.30 deg TVD: 7056.10 ft

S: 114 MD: 12364.00 ft Inc: 93.93
deg Az: 270.21 deg TVD: 7050.57 ft

S: 115 MD: 12458.00 ft Inc: 93.82
deg Az: 270.49 deg TVD: 7044.21 ft

S: 116 MD: 12553.00 ft Inc: 93.83
deg Az: 270.10 deg TVD: 7037.88 ft

S: 117 MD: 12647.00 ft Inc: 93.15
deg Az: 270.18 deg TVD: 7032.15 ft

S: 118 MD: 12742.00 ft Inc: 93.02
deg Az: 269.55 deg TVD: 7027.04 ft



12800

12900

13000

13100

13200

13300



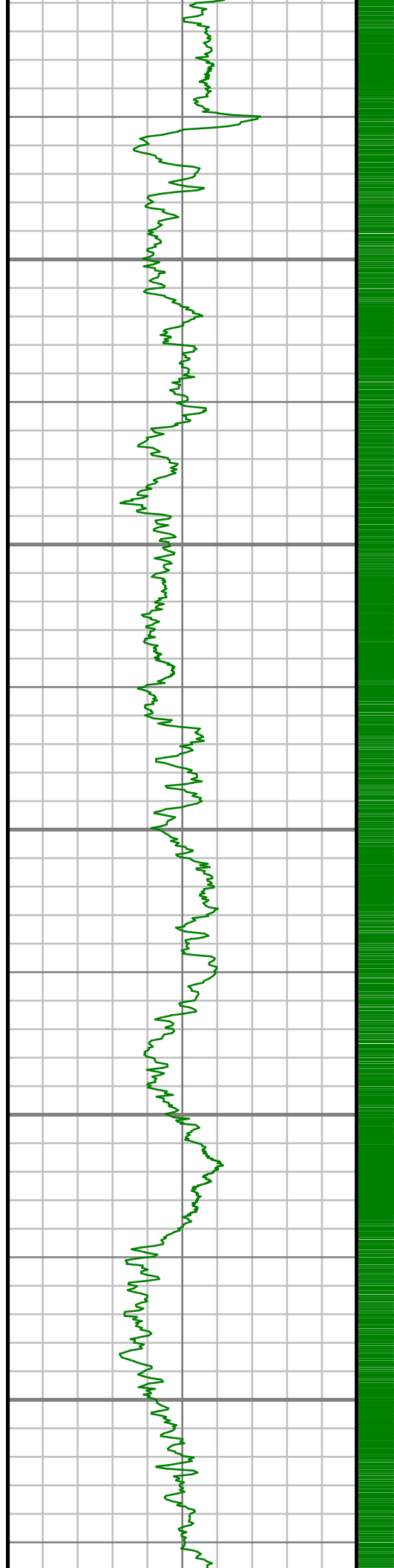
S: 119 MD: 12836.00 ft Inc: 93.46
deg Az: 269.35 deg TVD: 7021.73 ft

S: 120 MD: 12931.00 ft Inc: 94.13
deg Az: 269.82 deg TVD: 7015.44 ft

S: 121 MD: 13025.00 ft Inc: 93.42
deg Az: 269.87 deg TVD: 7009.25 ft

S: 122 MD: 13119.00 ft Inc: 92.35
deg Az: 269.99 deg TVD: 7004.52 ft

S: 123 MD: 13214.00 ft Inc: 92.78
deg Az: 270.76 deg TVD: 7000.27 ft



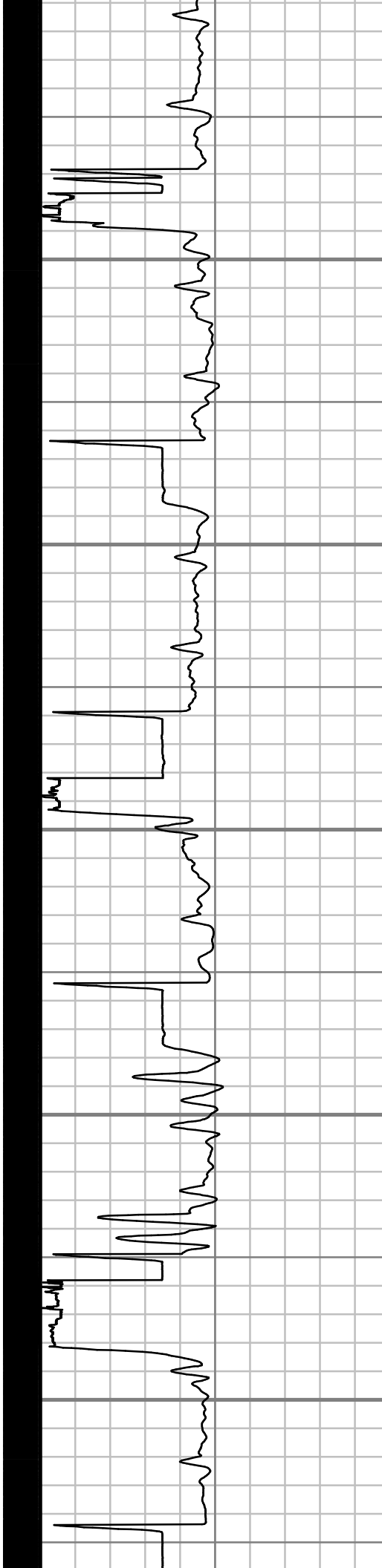
13400

13500

13600

13700

13800



S: 124 MD: 13309.00 ft Inc: 92.77
deg Az: 270.79 deg TVD: 6995.67 ft

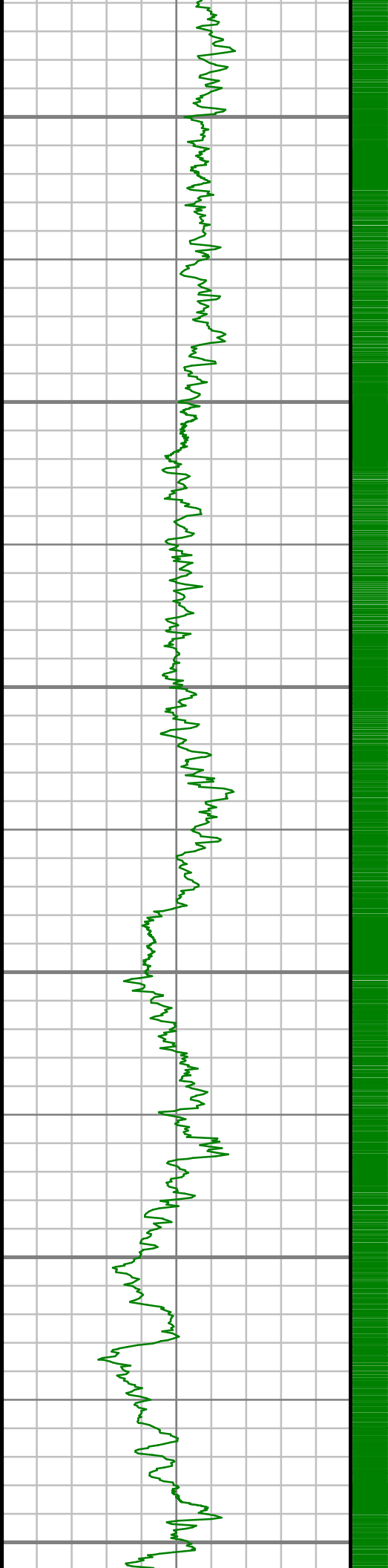
S: 125 MD: 13403.00 ft Inc: 91.34
deg Az: 270.13 deg TVD: 6992.29 ft

S: 126 MD: 13497.00 ft Inc: 91.68
deg Az: 271.31 deg TVD: 6989.82 ft

S: 127 MD: 13591.00 ft Inc: 90.17
deg Az: 271.37 deg TVD: 6988.30 ft

S: 128 MD: 13686.00 ft Inc: 89.26
deg Az: 271.94 deg TVD: 6988.78 ft

S: 129 MD: 13780.00 ft Inc: 90.47
deg Az: 271.45 deg TVD: 6989.00 ft



13900

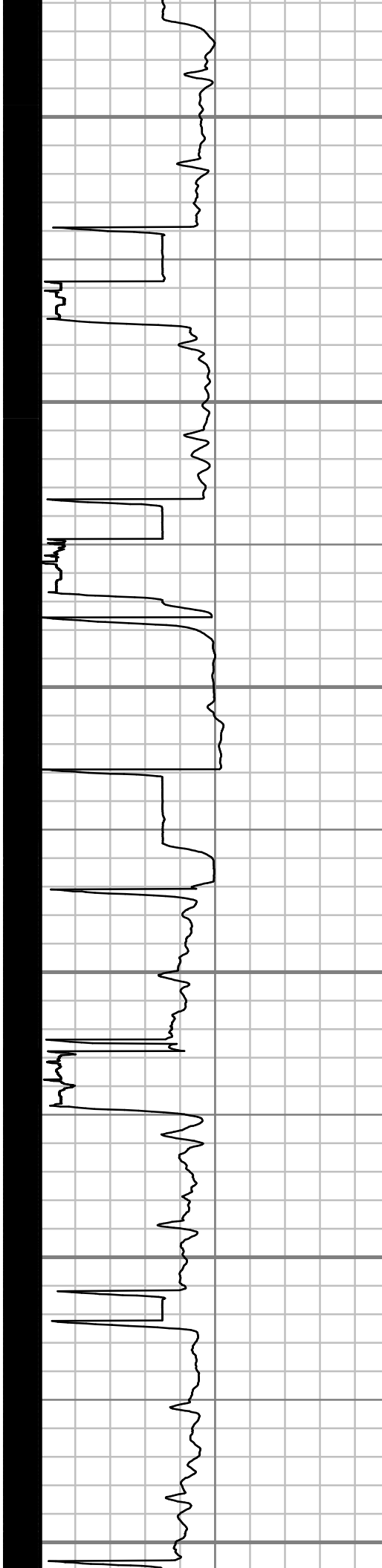
14000

14100

14200

14300

14400



S: 130 MD: 13874.00 ft Inc: 91.54
deg Az: 271.83 deg TVD: 6987.35 ft

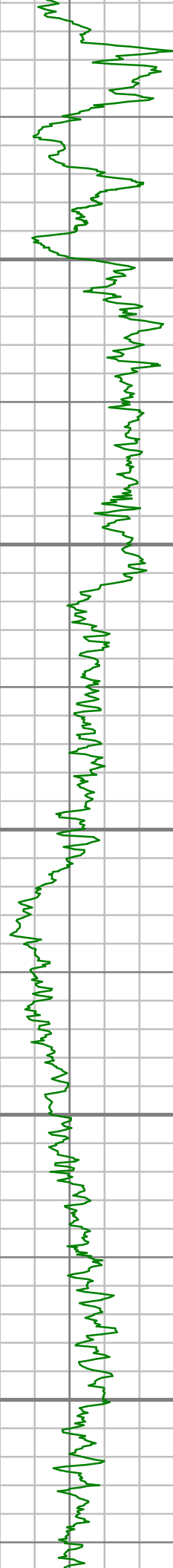
S: 131 MD: 13969.00 ft Inc: 90.20
deg Az: 271.01 deg TVD: 6985.90 ft

S: 132 MD: 14063.00 ft Inc: 90.90
deg Az: 271.15 deg TVD: 6984.99 ft

S: 133 MD: 14157.00 ft Inc: 91.51
deg Az: 271.52 deg TVD: 6983.01 ft

S: 134 MD: 14252.00 ft Inc: 92.05
deg Az: 268.61 deg TVD: 6980.07 ft

S: 135 MD: 14346.00 ft Inc: 93.25
deg Az: 268.69 deg TVD: 6975.72 ft



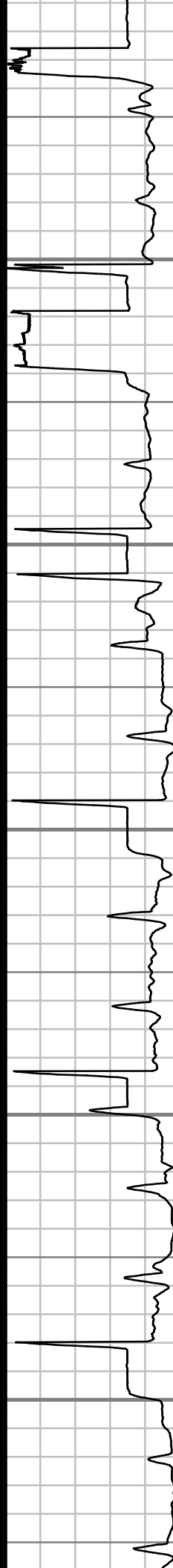
14500

14600

14700

14800

14900



S: 136 MD: 14440.00 ft Inc: 92.72
deg Az: 269.16 deg TVD: 6970.82 ft

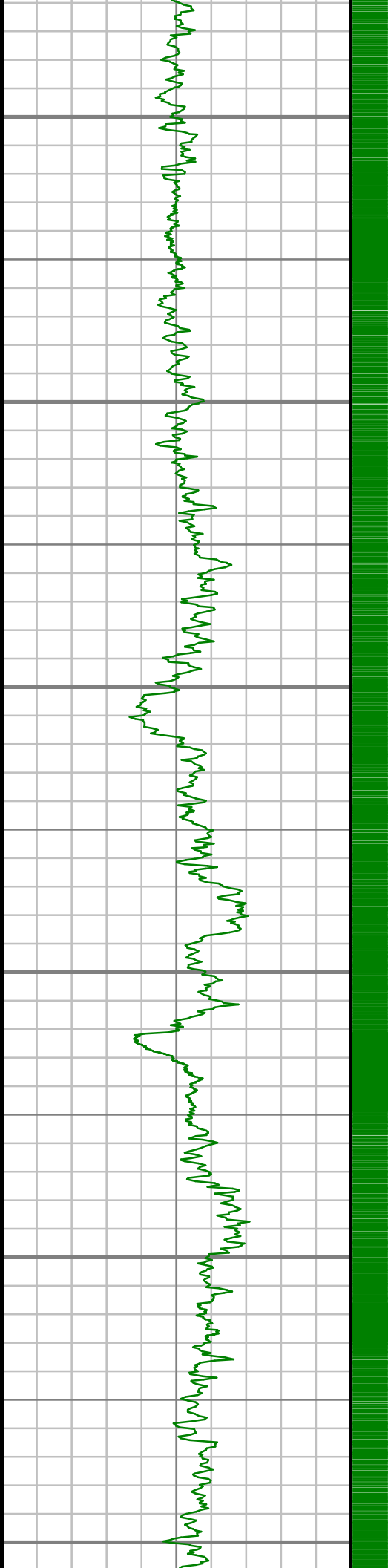
S: 137 MD: 14535.00 ft Inc: 91.58
deg Az: 269.82 deg TVD: 6967.27 ft

S: 138 MD: 14630.00 ft Inc: 91.14
deg Az: 270.56 deg TVD: 6965.01 ft

S: 139 MD: 14724.00 ft Inc: 90.60
deg Az: 269.56 deg TVD: 6963.58 ft

S: 140 MD: 14819.00 ft Inc: 91.48
deg Az: 270.63 deg TVD: 6961.86 ft

S: 141 MD: 14913.00 ft Inc: 89.36
deg Az: 269.34 deg TVD: 6961.17 ft



15000

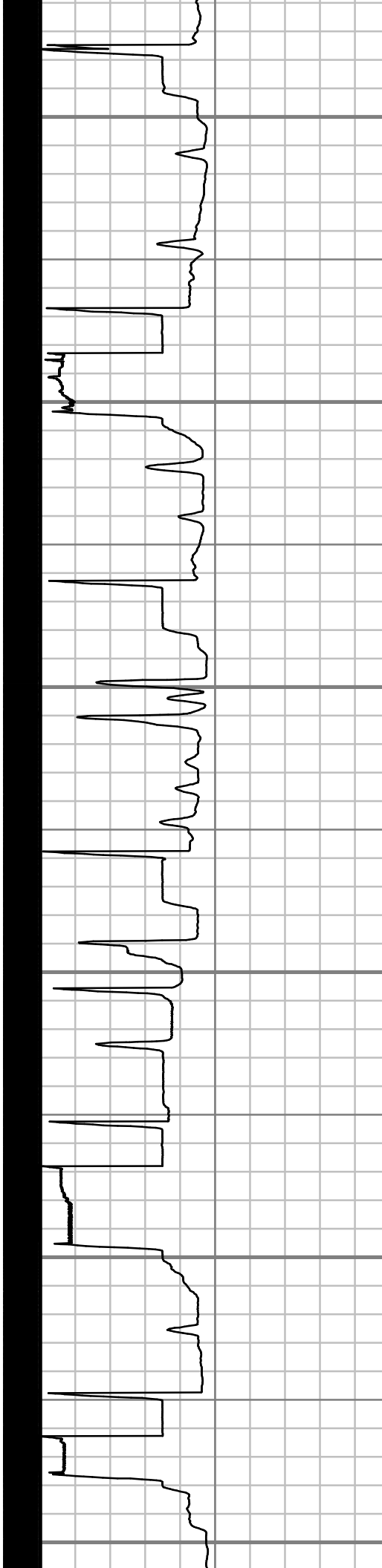
15100

15200

15300

15400

15500



S: 142 MD: 15007.00 ft Inc: 88.56
deg Az: 271.64 deg TVD: 6962.88 ft

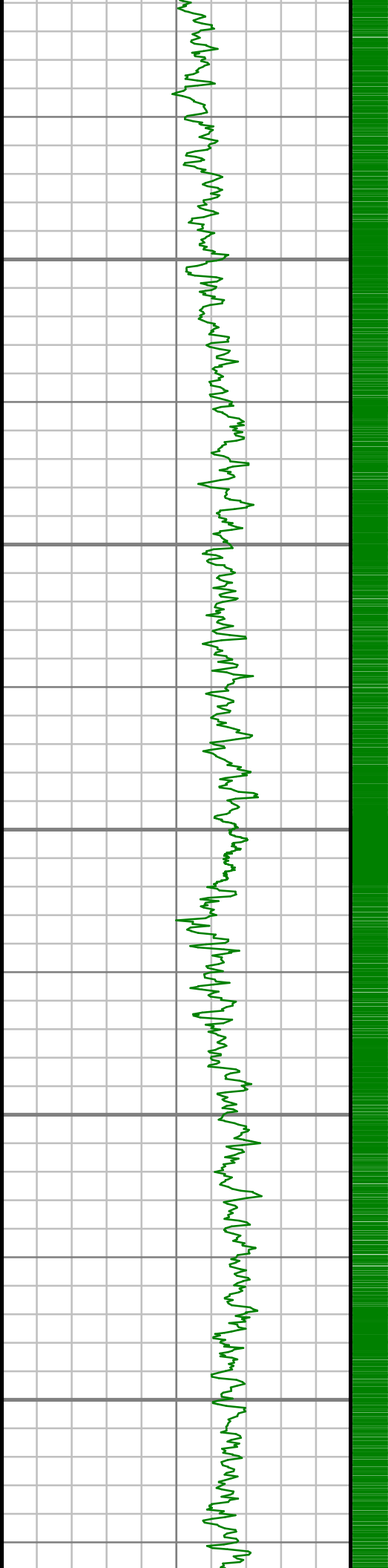
S: 143 MD: 15102.00 ft Inc: 90.67
deg Az: 271.14 deg TVD: 6963.51 ft

S: 144 MD: 15197.00 ft Inc: 89.33
deg Az: 270.11 deg TVD: 6963.52 ft

S: 145 MD: 15292.00 ft Inc: 88.49
deg Az: 270.36 deg TVD: 6965.32 ft

S: 146 MD: 15386.00 ft Inc: 89.20
deg Az: 267.62 deg TVD: 6967.22 ft

S: 147 MD: 15481.00 ft Inc: 91.71
deg Az: 266.77 deg TVD: 6966.47 ft



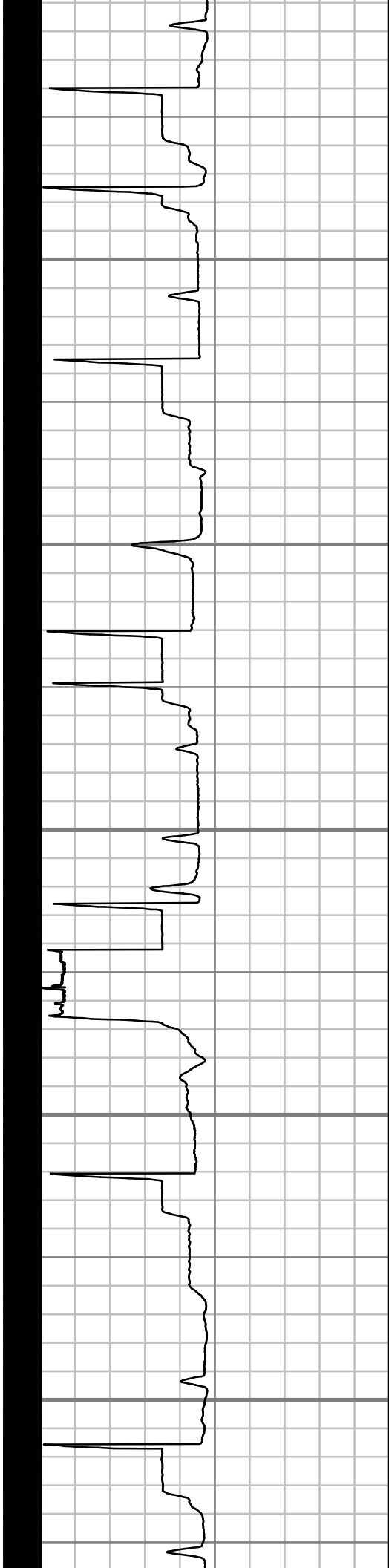
15600

15700

15800

15900

16000



S: 148 MD: 15574.00 ft Inc: 91.68
deg Az: 266.93 deg TVD: 6963.72 ft

S: 149 MD: 15670.00 ft Inc: 91.84
deg Az: 267.62 deg TVD: 6960.77 ft

S: 150 MD: 15764.00 ft Inc: 90.57
deg Az: 265.37 deg TVD: 6958.79 ft

S: 151 MD: 15859.00 ft Inc: 91.74
deg Az: 268.74 deg TVD: 6956.87 ft

S: 152 MD: 15953.00 ft Inc: 91.58
deg Az: 269.56 deg TVD: 6954.15 ft

S: 153 MD: 16048.00 ft Inc: 90.80
deg Az: 269.72 deg TVD: 6952.17 ft



16100

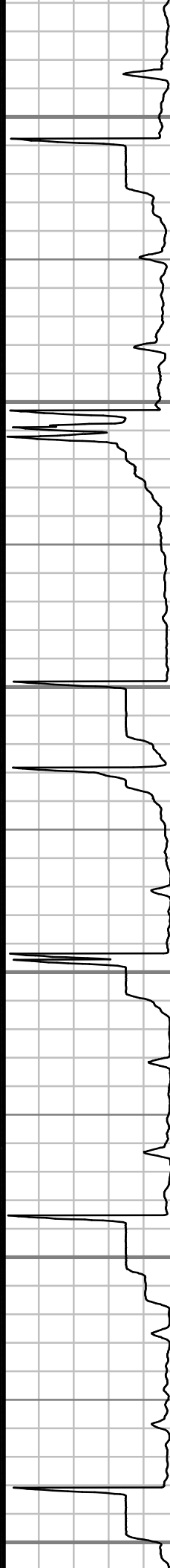
16200

16300

16400

16500

16600



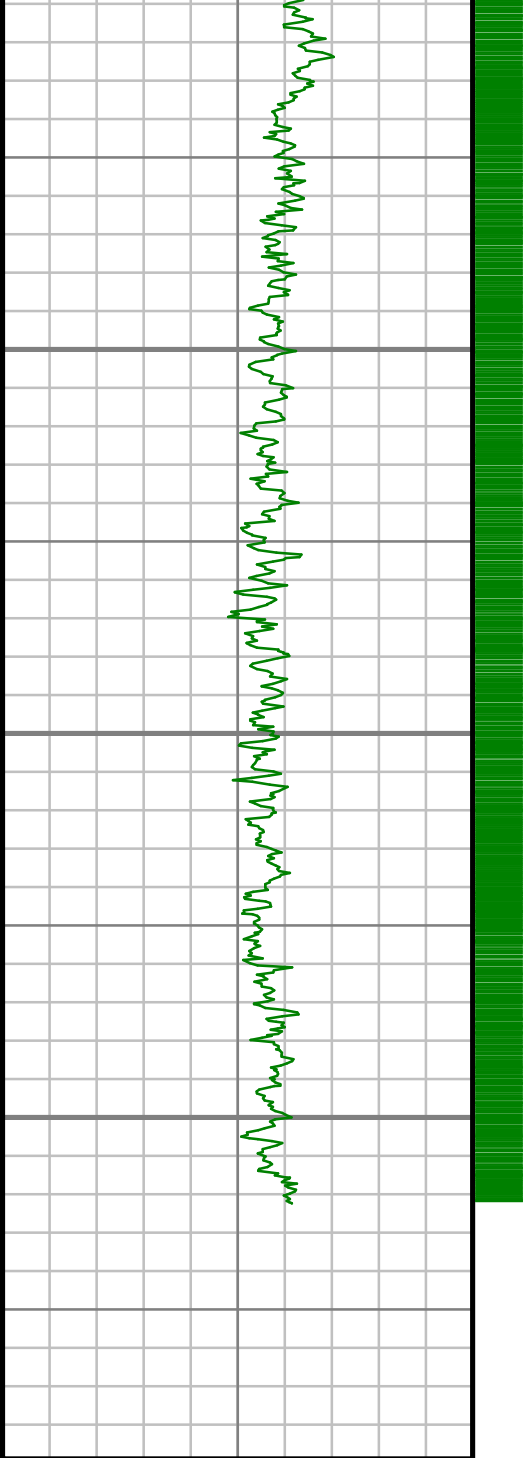
S: 154 MD: 16143.00 ft Inc: 91.07
deg Az: 269.96 deg TVD: 6950.62 ft

S: 155 MD: 16237.00 ft Inc: 91.34
deg Az: 270.41 deg TVD: 6948.64 ft

S: 156 MD: 16332.00 ft Inc: 90.80
deg Az: 270.79 deg TVD: 6946.86 ft

S: 157 MD: 16426.00 ft Inc: 91.24
deg Az: 271.13 deg TVD: 6945.18 ft

S: 158 MD: 16521.00 ft Inc: 91.14
deg Az: 271.61 deg TVD: 6943.21 ft



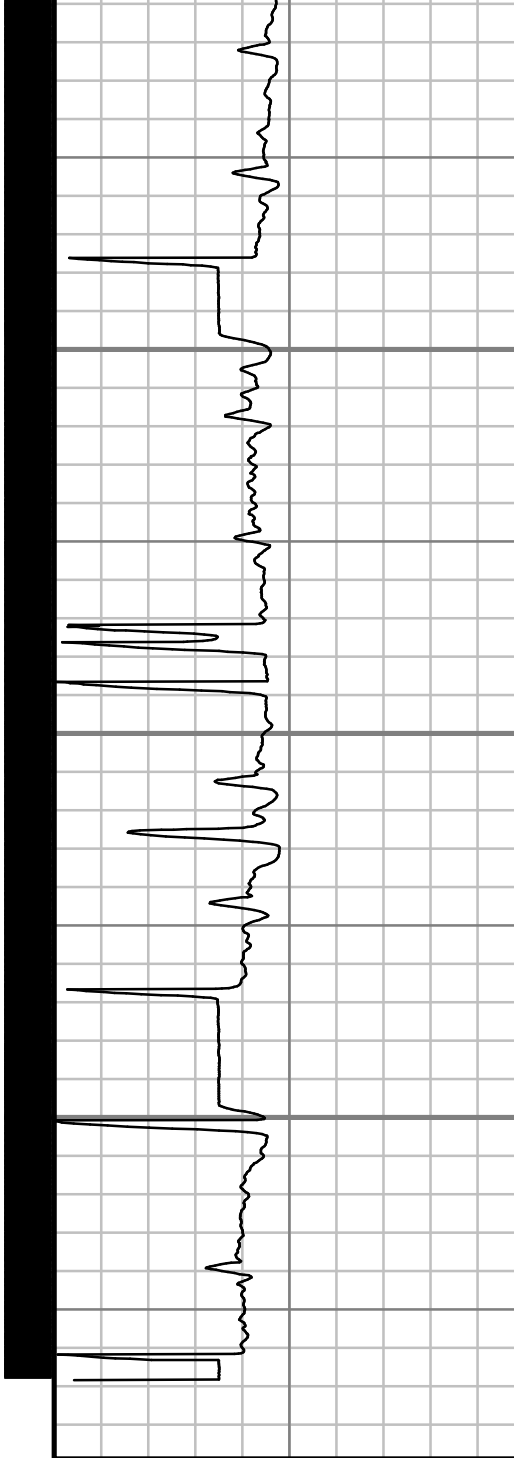
Gamma Ray (GR)		
0	Unit = aapi	200

16700

16800

16900

MEASURED DEPTH
1:600 (ft)



Rate of Penetration (ROP)		
0	Unit = ft/hr	1000

S: 159 MD: 16616.00 ft Inc: 90.80
deg Az: 272.20 deg TVD: 6941.60 ft

S: 160 MD: 16710.00 ft Inc: 90.67
deg Az: 271.91 deg TVD: 6940.38 ft

S: 161 MD: 16805.00 ft Inc: 90.27
deg Az: 271.87 deg TVD: 6939.61 ft

S: 162 MD: 16899.00 ft Inc: 90.34
deg Az: 272.45 deg TVD: 6939.11 ft

S: 163 MD: 16968.00 ft Inc: 90.34
deg Az: 272.45 deg TVD: 6938.71 ft

Comments



GAMMA RAY

2" = 100' FEET MD