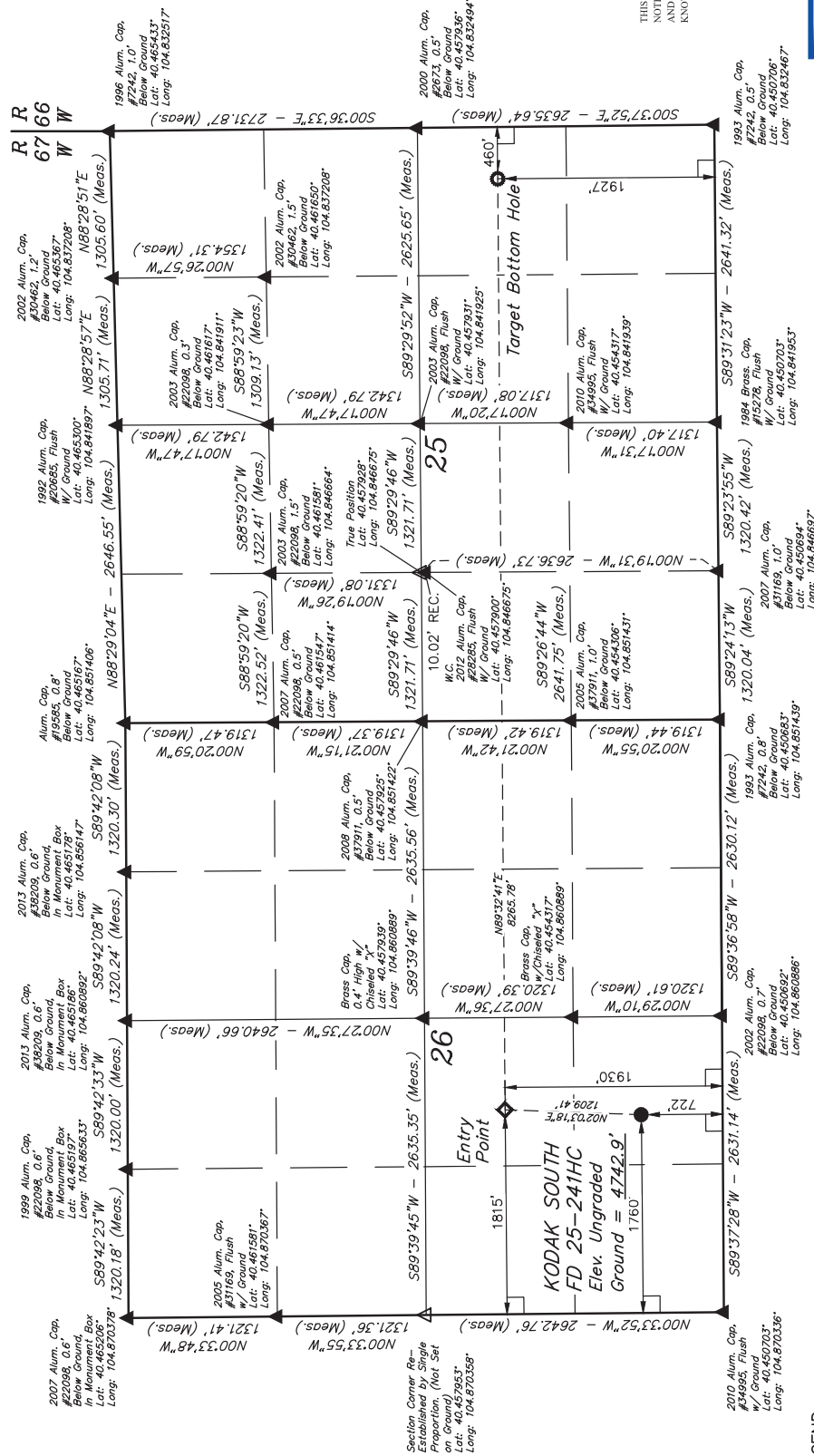
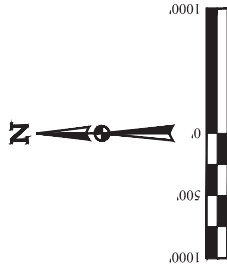


T6N, R67W, 6th P.M.

GREAT WESTERN OPERATING COMPANY
KODAK SOUTH FD 25-241HC
SE 1/4 SW 1/4, SECTION 26, 16N, R67W, 6th P.M.
WELD COUNTY, COLORADO

— BASIS OF BEARINGS
BASIS OF ELEVATION
USGS COOPERATIVE BASE NETWORK CONTROL STATION,
DESIGNATION "VERMILYEA": NGS DATA SHEET LISTS THE
NAVD 88 ELEVATION AS BEING 5026 FEET



CERTIFICATE OF REGISTRATION
THIS IS TO CERTIFY THAT THE ABOVE NAMED SURVEYOR HAS BEEN REGISTERED AS A PROFESSIONAL SURVEYOR IN THE STATE OF COLORADO AND THAT THE SAME ARE TRUE AND CORRECT TO THE BEST OF HIS KNOWLEDGE AND BELIEF.

RECEIVED LAND SURVEYOR
REGISTERED PROFESSIONAL NO. 28285
STATE OF COLORADO
JAN 16 2016

REV: 4 12-02-16 K.B. (NAME CHANGE)

LEGEND:

- = 90° SYMBOL
- = PROPOSED WELLHEAD.
- = TARGET BOTTOM HOLE.
- ◇ = ENTRY POINT.
- ◆ = SECTION CORNERS LOCATED. (NAD 83)
- △ = SECTION CORNERS RE-ESTABLISHED. (NAD 83) (Not Set on Ground)

WELL LOCATION PLAT

SURVEYED BY		SCALE	
ZANE BULLARD, J.C.		1" = 1000'	
DRAWN BY		K.B.	

UELS, LLC
Corporate Office * 85 South 200 East
Vernal, UT 84078 * (435) 789-1017

PDOP = 1.5

NAD 83 (SURFACE LOCATION)		NAD 83 (ENTRY POINT)		NAD 83 (TARGET BOTTOM HOLE)	
LATITUDE = 40°27'09.63" (40.452675)		LATITUDE = 40°27'21.57" (40.455992)		LATITUDE = 40°27'21.57" (40.455992)	
LONGITUDE = 104°51'50.48" (104.864022)		LONGITUDE = 104°51'49.79" (104.863831)		LONGITUDE = 104°50'02.90" (104.834139)	
NAD 27 (SURFACE LOCATION)		NAD 27 (ENTRY POINT)		NAD 27 (TARGET BOTTOM HOLE)	
LATITUDE = 40°27'09.70" (40.452694)		LATITUDE = 40°27'21.64" (40.456011)		LATITUDE = 40°27'21.64" (40.456011)	
LONGITUDE = 104°51'48.58" (104.863494)		LONGITUDE = 104°51'47.90" (104.863306)		LONGITUDE = 104°50'01.00" (104.833611)	