



December 20, 2016

Mr. Matt Lepore, Director
Colorado Oil and Gas Conservation Commission
1120 Lincoln Street, Suite 801
Denver, CO 80203

RE: COGCC Rule 318A.e.: Proposed Wellbore Spacing Unit

Goetzel 32C-30-M
6N-66W Sec 29: S/2NW/4, SW/4NE/4, N/2SW/4, NW/4SE/4; Sec 30: S/2N/2, N/2S/2
600.57 Acres

Dear Mr. Lepore,

Synergy Resources Corporation (Synergy) is planning to drill the above referenced well in accordance with the provisions set out in COGCC Rule 318A.e. Synergy's proposed wellbore spacing unit consists of:

Goetzel 32C-30-M
6N-66W Sec 29: S/2NW/4, SW/4NE/4, N/2SW/4, NW/4SE/4; Sec 30: S/2N/2, N/2S/2
600.57 Acres

Synergy is not the only owner within the proposed wellbore spacing unit and hereby certifies to the Director that a thirty day (30-day) notice has been given by certified mail to all owners in the proposed wellbore spacing unit, as required by COGCC Rule 318A.e. (6). Copies of the required notification letters are on file at Synergy's office. The required thirty (30) day notice period has elapsed absent the receipt by Synergy of any objection to their proposal by the owner(s) within the proposed spacing unit for the subject well. Bayswater Exploration & Production, LLC submitted a competing spacing application identified by Docket No. 160800374. On Friday, December 16, 2016 Bayswater sent a request to withdraw their application via email to Jill Dorancy (copy attached). With this resolution of the competing applications and no Owner objections, Synergy Resources hereby requests the Director to approve the well.

Enclosed is the Proposed Spacing Unit Plat to assist in your review and approval of Synergy's proposed Application for Permit to Drill (APD) for Goetzel 32C-30-M well. Synergy respectfully requests the COGCC to review the enclosed information and approve the exception location waiver request per Surface Use Agreement and APD for Goetzel 32C-30-M.

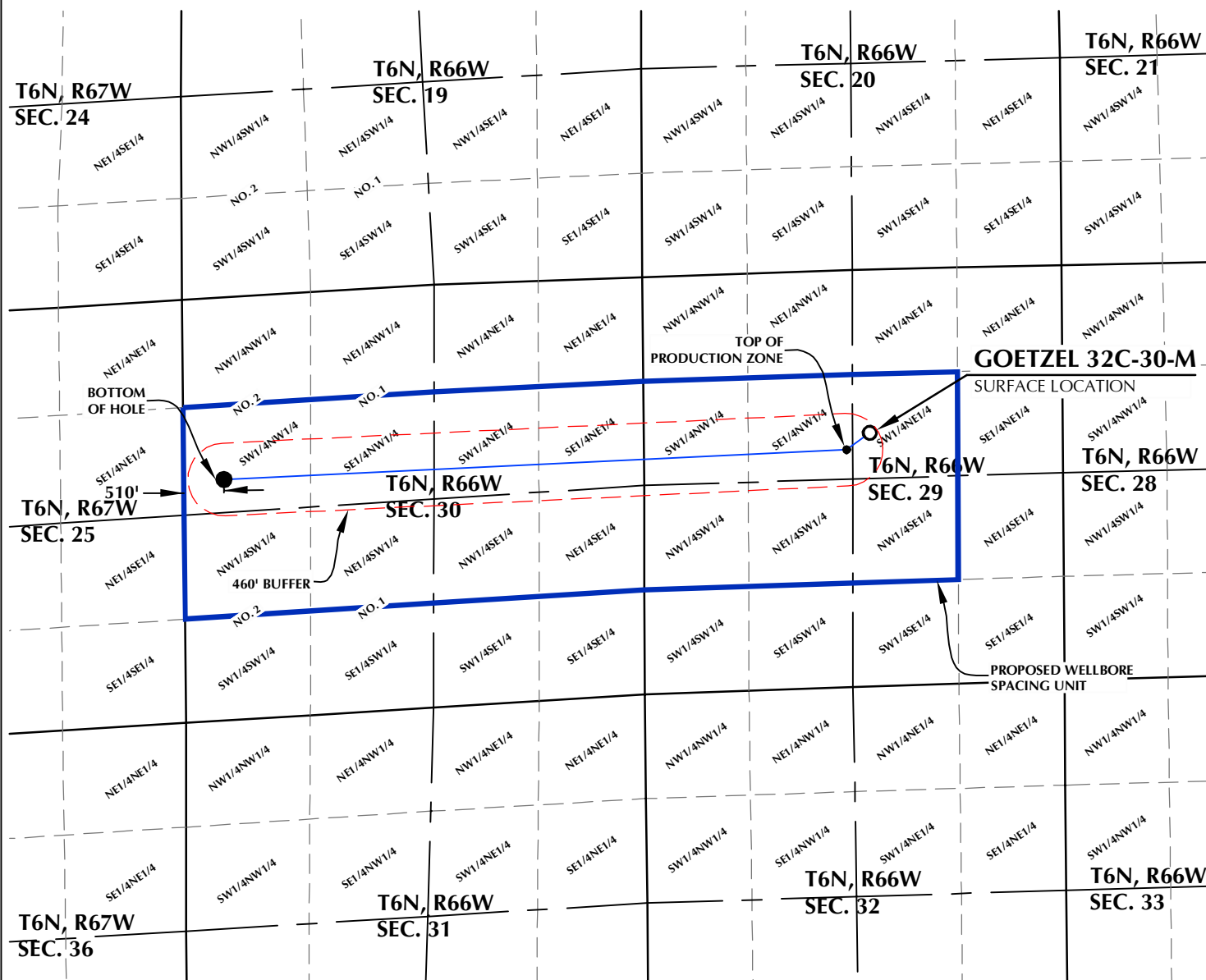
Thank you,

Erin Ekblad

Erin Ekblad
Manager of Regulatory Affairs
Synergy Resources Corporation

Attachments: Proposed Spacing Unit Plat, Bayswater withdrawal request email

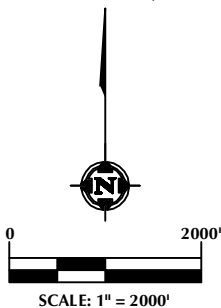
GOETZEL 32C-30-M WELLBORE SPACING UNIT



SURFACE LOCATION
GROUND ELEVATION= 4728.3'
LATITUDE= 40.460624°
LONGITUDE= -104.801188°
1/4 1/4: SW1/4 NE1/4

TOP OF PRODUCTION
LATITUDE= 40.460044°
LONGITUDE= -104.802253°
1/4 1/4: SE1/4 NW1/4

BOTTOM HOLE LOCATION
LATITUDE= 40.459178°
LONGITUDE= -104.830664°
1/4 1/4: SW1/4 NW1/4



**DISTANCE FROM COMPLETED
PORTION OF WELLBORE TO
NEAREST UNIT BOUNDARY= 510'**
NOTES:

1. DRAWING LATITUDE AND LONGITUDE COORDINATES ARE NAD 83 (2011)(EPOCH:2010)
2. ELEVATION BASED ON NAVD88 (GEOID12B)
3. BASIS OF BEARING DERIVED FROM COLORADO COORDINATE SYSTEM OF 1983 NORTH ZONE.
ALL MEASURED DISTANCES ARE GRID.
4. COMBINED SCALE FACTOR: .99974048 CALCULATED FROM THE W. 1/4 CORNER OF SECTION 29
5. NO. 1 & NO. 2 AS SHOWN HEREON ARE GOVERNMENT LOTS 1 & 2 PER THE ORIGINAL GLO SURVEY

WELL PAD - GOETZEL 7-29

GOETZEL 32C-30-M
WELLBORE SPACING UNIT
2073' FNL & 2446' FEL SWNE (SURFACE)
2278' FNL & 2577' FWL SENW (TOP OF PRODUCTION)
LOCATED IN SECTION 29
2303' FNL & 510' FWL LOT 2 (SWNW) (BOTTOM)
LOCATED IN SECTION 30
T6N, R66W, 6TH P.M.
WELD COUNTY, COLORADO

SYNERGY
RESOURCES CORPORATION
1625 Broadway, Suite 300
Denver, Colorado 80202



CONSULTING, LLC

SHERIDAN OFFICE
1095 Saberton Avenue
Sheridan, Wyoming 82801
Phone 307-674-0609

LOVELAND OFFICE
1635 Foxtrail Drive, Suite 204
Loveland, Colorado 80538
Phone 970-776-4331

DRAFTED BY:	LMO	CHECKED BY:	JRS
DATE DRAFTED:	8/30/16	DATE SURVEYED:	7/7/16
REVISED:	12/1/16	FILE NAME:	16-81

From: Joe Pierzchala [<mailto:JPierzchala@wsmtlaw.com>]

Sent: Friday, December 16, 2016 12:10 PM

To: Jill Dorancy - DNR (jill.dorancy@state.co.us)

Cc: dnr_hearingapplications@state.co.us; Julie Murphy - DNR (Julie.Murphy@state.co.us); Jill Fulcher (jfulcher@bwenergylaw.com); Wozniak, Michael (MWozniak@bwenergylaw.com); jparrot@bwenergylaw.com; Jamie Jost ; Kelsey Wasylenky (kwasylenky@jostenergylaw.com); Steve Sullivan; Sarah Sorum; Melissa Morman

Subject: 160800374 - Bayswater Request to Withdraw Application

Good afternoon, Ms. Dorancy.

Please accept this email as Bayswater Exploration & Production, LLC's request to withdraw its spacing application in Docket No. 160800374, which was protested by Synergy Resources Corporation and Great Western Operating Company, LLC. Counsel for Synergy and Great Western are copied on this withdrawal request.

Please confirm the withdrawal at your earliest convenience.

Regards,
Joe

Joseph C. Pierzchala

Attorney

Welborn Sullivan Meck & Tooley, P.C.

1125 17th Street, Suite 2200, Denver, CO 80202

EMAIL: jpierzchala@wsmtlaw.com

DIRECT: 303-376-4473

MAIN: 303-830-2500

FAX: 303-832-2366

www.wsmtlaw.com

NOTICE: This electronic mail transmission including any