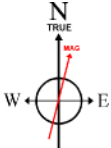


Location:	COLORADO	Slot:	SLOT#11 GOETZEL 32C-30-M (2073°FNL & 2446°FEL, SEC.29)
Field:	WELD COUNTY (NAD83,TRUE NORTH)	Well:	GOETZEL 32C-30-M
Facility:	SEC.29-T06N-R66W	Wellbore:	GOETZEL 32C-30-M PWB

Plot reference wellpath is GOETZEL 32C-30-M PWP (REV-A.0)	Grid System: NAD83 / Lambert Colorado SP, Northern Zone (501), US feet
True vertical depths are referenced to PRECISION 462 (20KB) (RKB)	* = Wellpath was transformed from a different geodetic datum
Measured depths are referenced to PRECISION 462 (20KB) (RKB)	North Reference: True north
PRECISION 462 (20KB) (RKB) to Mean Sea Level: 4748 feet	Scale: True distance
Mean Sea Level to Mud line (At Slot: SLOT#11 GOETZEL 32C-30-M (2073FNL & 2446FEL, SEC 29)): 0 feet	Depths are in feet
Coordinates are in feet referenced to Slot	Created by: ingmjarr on 2016-11-15
	Database: WA_DEN_Denver_Defn

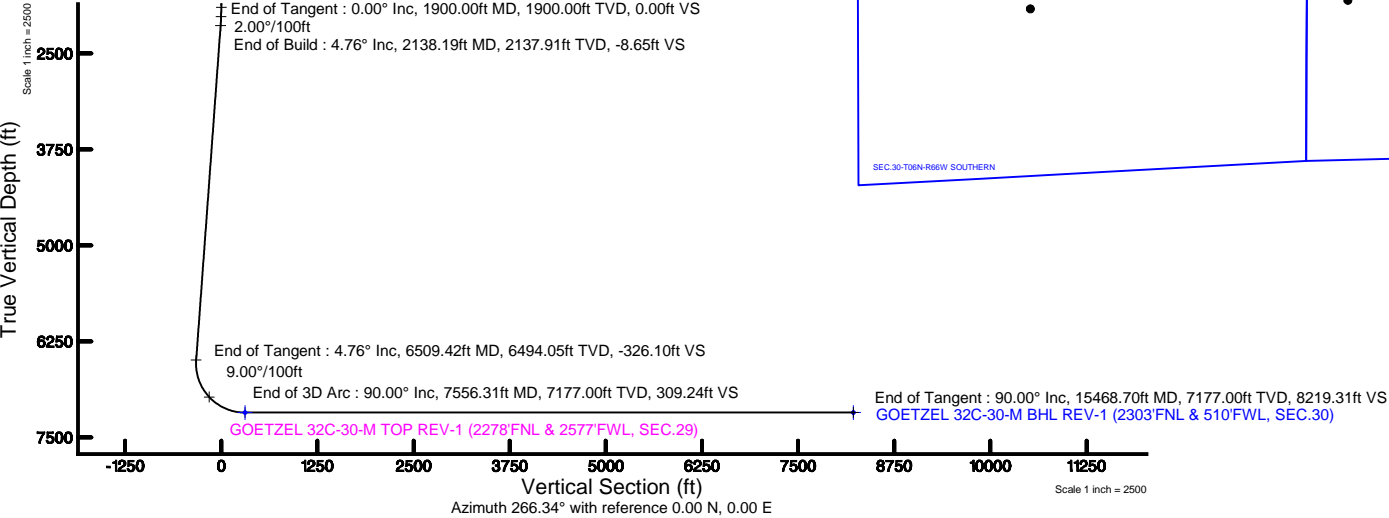
Facility Name			Grid East (US ft)	Grid North (US ft)	Latitude	Longitude
SEC.29-T06N-R66W			3194443.662	1411671.988	40°27'40.817"N	104°48'04.259"W
Slot	Local N (ft)	Local E (ft)	Grid East (US ft)	Grid North (US ft)	Latitude	Longitude
SLOT#11 GOETZLE 32C-30-M (2073FNL & 2446FEL, SEC.29)	-260.16	-1.41	3194450.305	1411411.832	40°27'38.246"N	104°48'04.277"W
PRECISION 462 (209KB) (RKB) to Mud line (At Slot: SLOT#11 GOETZLE 32C-30-M (2073FNL & 2446FEL, SEC.29))					4748ft	
Mean Sea Level to Mud line (At Slot: SLOT#11 GOETZLE 32C-30-M (2073FNL & 2446FEL, SEC.29))					0ft	
PRECISION 462 (209KB) (RKB) to Mean Sea Level					4748ft	

MD (ft)	Inc (°)	Az (°)	TVD (ft)	Local N (ft)	Local E (ft)	Grid East (US ft)	Grid North (US ft)	Latitude	Longitude
20.00	0.000	115.353	20.00	0.00	0.00	3194450.31	1411411.83	40°27'38.246"N	104°48'04.277"W



BGGM (1900.0 to 2018.0) Dip: 66.93° Field: 52529.3 nT
Magnetic North is 8.46 degrees East of True North (at 11/10/2016)

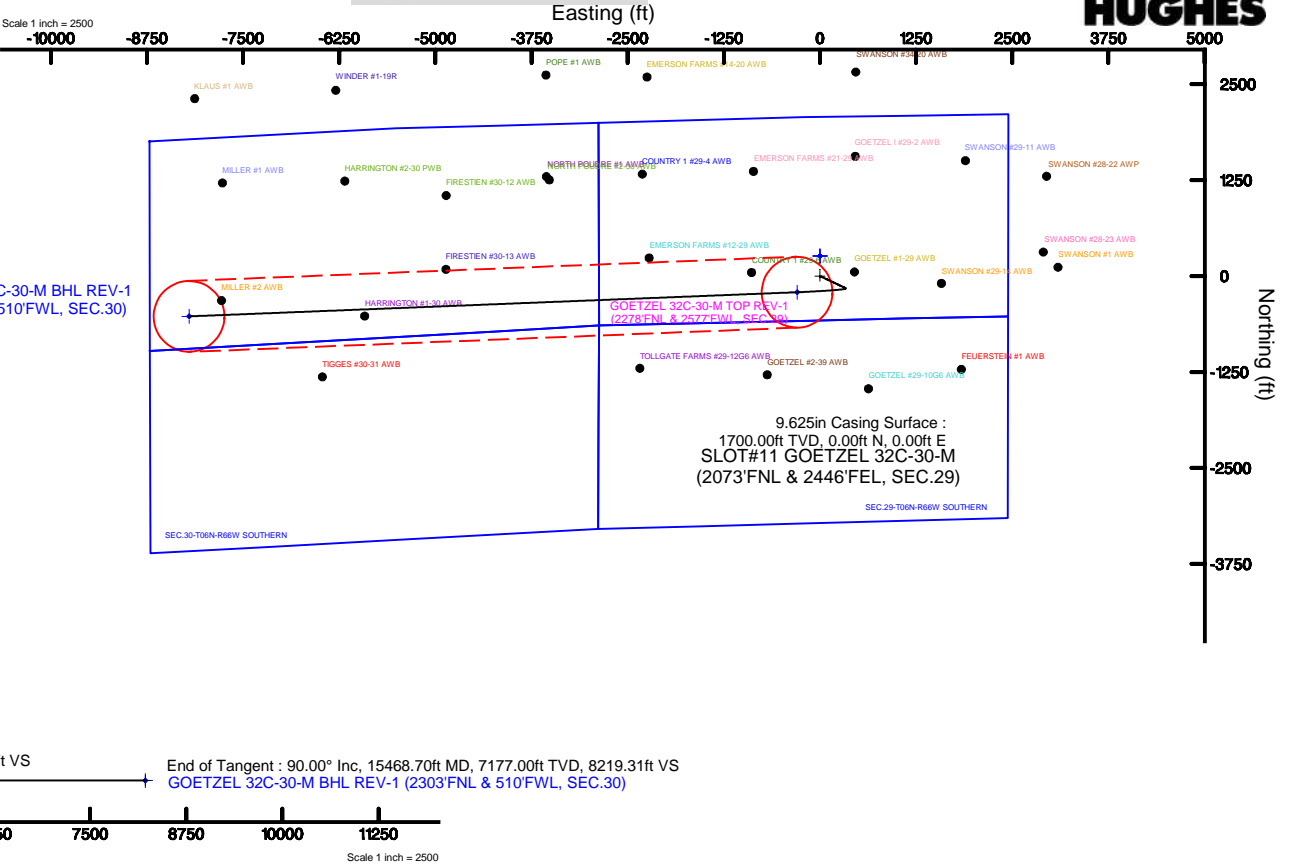
To correct azimuth from Magnetic to True add 8.46 degrees



Well Profile Data								
Design Comment	MD (ft)	Inc (°)	Az (°)	TVD (ft)	Local N (ft)	Local E (ft)	DLS (°/100ft)	VS (ft)
Tie On	20.00	0.000	115.353	20.00	0.00	0.00	0.00	0.00
End of Tangent	1900.00	0.000	115.353	1900.00	0.00	0.00	0.00	0.00
End of Build	2138.19	4.764	115.353	2137.91	-4.24	8.94	2.00	-8.65
End of Tangent	6509.42	4.764	115.353	6494.05	-159.68	337.00	0.00	-326.10
End of 3D Arc	7556.31	90.000	267.725	7177.00	-211.26	-296.35	9.00	309.24
End of Tangent	15468.70	90.000	267.725	7177.00	-525.40	-8202.50	0.00	8219.31

Start MD (ft)	End MD (ft)	Tool	Model	Log Name/Comment	Wellbore
20.00	1700.00	BHI NaviTrak	Custom BHI NaviTrak (Standard Rotating) (Rockies 0.03Gt model)		GOETZEL 32C-30-M PWB
1700.00	15468.70	BHI AutoTrak Curve	Custom BHI AutoTrak Curve (Short) (Rockies 0.03Gt model)		GOETZEL 32C-30-M PWB

Name	MD (ft)	TVD (ft)	Local N (ft)	Local E (ft)	Grid East (US ft)	Grid North (US ft)	Latitude	Longitude
SEC 29-T60N-R66W- NORTHERN	0.00	260.16	1.41	3194449.66	1411671.99	40°27'40.817"N	104°48'04.259"W	
SEC 29-T60N-R66W- SOUTHERN	0.00	260.16	1.41	3194449.66	1411671.99	40°27'40.817"N	104°48'04.259"W	
SEC 30-T60N-R66W- NORTHERN	0.00	260.16	1.41	3194449.66	1411671.99	40°27'40.817"N	104°48'04.259"W	
SEC 30-T60N-R66W- SOUTHERN	0.00	260.16	1.41	3194449.66	1411671.99	40°27'40.817"N	104°48'04.259"W	
GOETZEL 32C-30-M BM, REV-1 (2309FT. & 510'FWL, SEC 30)	15468.70	7177.00	-525.40	-8022.50	3186252.51	1410821.83	40°27'33.041"N	104°48'59.390"W
GOETZEL 32C-30-M TOP REV-1 (2278FT. & 2577'FWL, SEC 29)	7506.31	7177.00	-211.26	-296.35	3194155.64	1411198.25	40°27'36.159"N	104°48'08.111"W



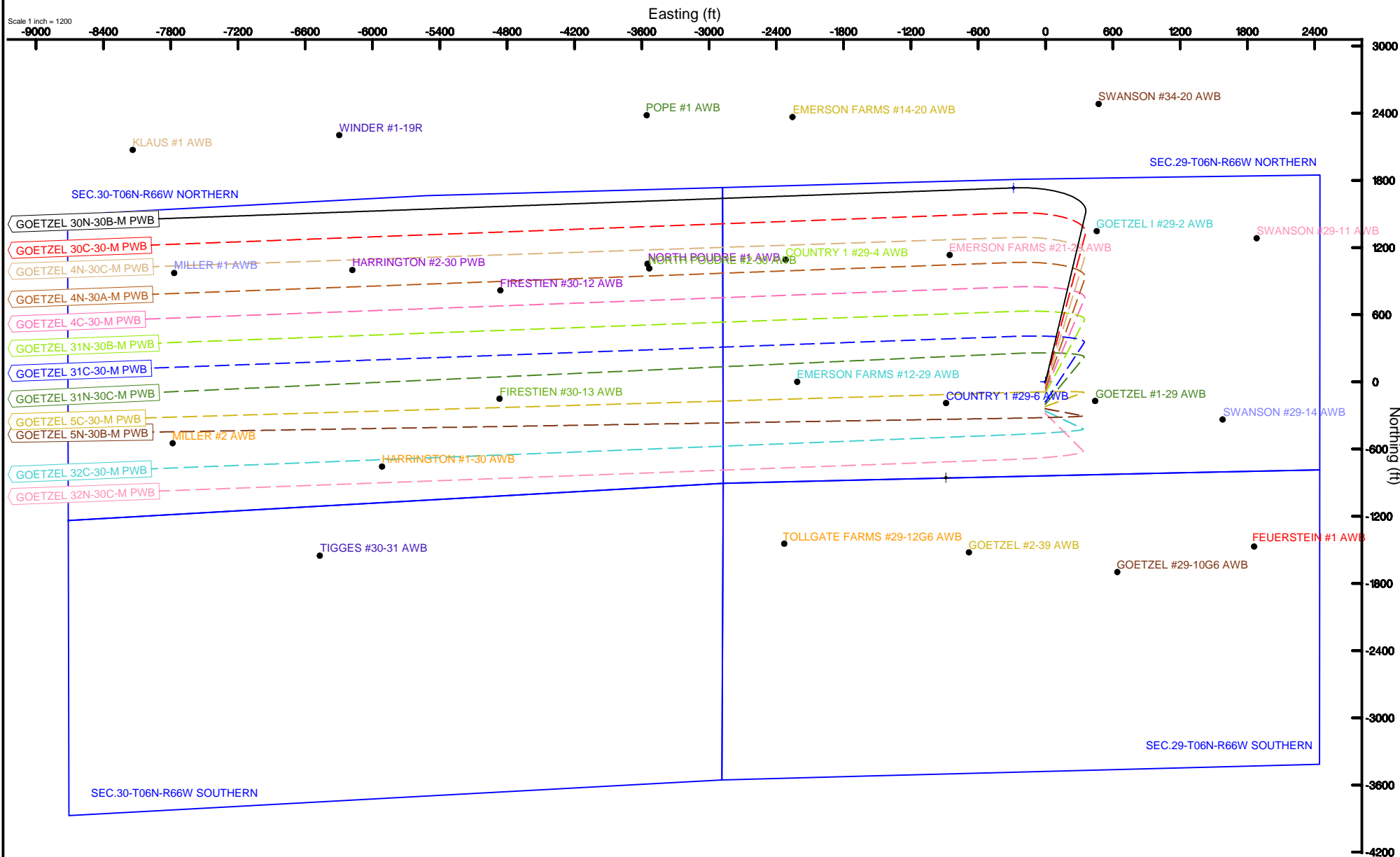
SYNERGY RESOURCES CORPORATION

Location: COLORADO Slot: SLOT#01 GOETZEL 30N-30B-M (1813'FNL & 2445'FEL, SEC.29)
Field: WELD COUNTY (NAD83,TRUE NORTH) Well: GOETZEL 30N-30B-M
Facility: SEC.29-T06N-R66W Wellbore: GOETZEL 30N-30B-M PWB



BGGM (1900.0 to 2018.0) Dip: 66.93° Field: 52529.3 nT
Magnetic North is 8.46 degrees East of True North (at 11/10/2016)

To correct azimuth from Magnetic to True add 8.46 degrees



GOETZEL_32C-30-M_PWP__REV-A.0_.las

~VERSION INFORMATION

VERS. 2.0 : CWLS LOG ASCII STANDARD-VERSION 2.0
 WRAP. NO : ASCII DATA SECTION CONTAINS ONE ROW PER WELLPATH STATION

~WELL INFORMATION

#MNEM	.UNITS	DATA	:DESCRIPTION
#-----	.-----	----	:-----
STRT	.ft	0.00	:START MD
STOP	.ft	15468.70	:STOP MD
STEP	.ft	0.0	:STEP (non-uniform increment)
NULL	.	-999.99	:NULL
COMP	.	SYNERGY RESOURCES CORPORATION	:OPERATOR
WELL	.	GOETZEL 32C-30-M	:WELL
FLD	.	WELD COUNTY (NAD83,TRUE NORTH)	:FIELD
LOC	.	COLORADO	:AREA (aka: Location)
CNTY	.	N/A	:COUNTY
STAT	.	N/A	:STATE
CTRY	.	N/A	:COUNTRY
SRVC	.	Baker Hughes	:CONTRACTOR
DATE	.	11/10/2016	:LOG REV DATE
API	.		:API NUMBER

~OTHER INFORMATION

#Software: WellArchitect(R) Version 5.0

#MNEM	.UNITS	DATA	:DESCRIPTION
#-----	.-----	----	:-----
WPTYPE	.	PLANNED WELLPATH	:WELLPATH TYPE
FACILITY	.	SEC.29-T06N-R66W	:FACILITY
SLOT	.	SLOT#11 GOETZEL 32C-30-M (2073'FNL & 2446'FEL, SEC.29):SLOT	:SLOT
WELLBORE	.	GOETZEL 32C-30-M PWB	:WELLBORE
WELLPATH	.	GOETZEL 32C-30-M PWP (REV-A.0)	:WELLPATH
MDREFPT	.	PRECISION 462 (20'KB) (RKB)	:MD REFERENCE POINT
TVDREFPT	.	PRECISION 462 (20'KB) (RKB)	:TVD REFERENCE POINT
LCLREFPT	.	SLOT	:LOCAL COORDINATE REFERENCE PT
VSAZIMUTH	.deg	266.34	:VERTICAL SECTION AZIMUTH
VSORIGN	.ft	0.00	:VERTICAL SECTION ORIGIN NORTH
VSORIGE	.ft	0.00	:VERTICAL SECTION ORIGIN EAST

~CURVE (WELLPATH) INFORMATION

#MNEM	.UNITS	:DESCRIPTION
#-----	.-----	:-----
DEPT	.ft	:MEASURED DEPTH
INC	.deg	:INCLINATION
AZI	.deg	:AZIMUTH
TVD	.ft	:TRUE VERTICAL DEPTH
SECT	.ft	:CROSS SECTION (CURTAIN/VERTICAL)
LOCALN	.ft	:LOCAL NORTH
LOCALE	.ft	:LOCAL EAST

GOETZEL_32C-30-M_PWP__REV-A.0_.las

LAT .deg :LATITUDE
LONG .deg :LONGITUDE
DLS .deg/100ft :DOGLEG SEVERITY

~ASCII DATA

0.00	0.00	115.35	0.00	0.00	0.00	0.00	40.4606239	-104.8011881	0.00
20.00	0.00	115.35	20.00	0.00	0.00	0.00	40.4606239	-104.8011881	0.00
120.00	0.00	115.35	120.00	0.00	0.00	0.00	40.4606239	-104.8011881	0.00
220.00	0.00	115.35	220.00	0.00	0.00	0.00	40.4606239	-104.8011881	0.00
320.00	0.00	115.35	320.00	0.00	0.00	0.00	40.4606239	-104.8011881	0.00
420.00	0.00	115.35	420.00	0.00	0.00	0.00	40.4606239	-104.8011881	0.00
520.00	0.00	115.35	520.00	0.00	0.00	0.00	40.4606239	-104.8011881	0.00
620.00	0.00	115.35	620.00	0.00	0.00	0.00	40.4606239	-104.8011881	0.00
720.00	0.00	115.35	720.00	0.00	0.00	0.00	40.4606239	-104.8011881	0.00
820.00	0.00	115.35	820.00	0.00	0.00	0.00	40.4606239	-104.8011881	0.00
920.00	0.00	115.35	920.00	0.00	0.00	0.00	40.4606239	-104.8011881	0.00
1020.00	0.00	115.35	1020.00	0.00	0.00	0.00	40.4606239	-104.8011881	0.00
1120.00	0.00	115.35	1120.00	0.00	0.00	0.00	40.4606239	-104.8011881	0.00
1220.00	0.00	115.35	1220.00	0.00	0.00	0.00	40.4606239	-104.8011881	0.00
1320.00	0.00	115.35	1320.00	0.00	0.00	0.00	40.4606239	-104.8011881	0.00
1420.00	0.00	115.35	1420.00	0.00	0.00	0.00	40.4606239	-104.8011881	0.00
1520.00	0.00	115.35	1520.00	0.00	0.00	0.00	40.4606239	-104.8011881	0.00
1620.00	0.00	115.35	1620.00	0.00	0.00	0.00	40.4606239	-104.8011881	0.00
1720.00	0.00	115.35	1720.00	0.00	0.00	0.00	40.4606239	-104.8011881	0.00
1820.00	0.00	115.35	1820.00	0.00	0.00	0.00	40.4606239	-104.8011881	0.00
1900.00	0.00	115.35	1900.00	0.00	0.00	0.00	40.4606239	-104.8011881	0.00
1920.00	0.40	115.35	1920.00	-0.06	-0.03	0.06	40.4606238	-104.8011878	2.00
2020.00	2.40	115.35	2019.96	-2.20	-1.08	2.27	40.4606209	-104.8011799	2.00
2120.00	4.40	115.35	2119.78	-7.38	-3.62	7.63	40.4606140	-104.8011606	2.00
2138.19	4.76	115.35	2137.91	-8.65	-4.24	8.94	40.4606123	-104.8011559	2.00
2220.00	4.76	115.35	2219.44	-14.60	-7.15	15.08	40.4606043	-104.8011339	0.00
2320.00	4.76	115.35	2319.10	-21.86	-10.70	22.59	40.4605945	-104.8011069	0.00
2420.00	4.76	115.35	2418.75	-29.12	-14.26	30.09	40.4605847	-104.8010799	0.00
2520.00	4.76	115.35	2518.41	-36.38	-17.82	37.60	40.4605750	-104.8010529	0.00
2620.00	4.76	115.35	2618.06	-43.64	-21.37	45.10	40.4605652	-104.8010260	0.00
2720.00	4.76	115.35	2717.72	-50.91	-24.93	52.61	40.4605555	-104.8009990	0.00
2820.00	4.76	115.35	2817.37	-58.17	-28.48	60.11	40.4605457	-104.8009720	0.00
2920.00	4.76	115.35	2917.02	-65.43	-32.04	67.62	40.4605359	-104.8009451	0.00
3020.00	4.76	115.35	3016.68	-72.69	-35.60	75.12	40.4605262	-104.8009181	0.00
3120.00	4.76	115.35	3116.33	-79.96	-39.15	82.63	40.4605164	-104.8008911	0.00
3220.00	4.76	115.35	3215.99	-87.22	-42.71	90.13	40.4605067	-104.8008642	0.00
3320.00	4.76	115.35	3315.64	-94.48	-46.26	97.64	40.4604969	-104.8008372	0.00
3420.00	4.76	115.35	3415.30	-101.74	-49.82	105.14	40.4604871	-104.8008102	0.00
3520.00	4.76	115.35	3514.95	-109.00	-53.38	112.65	40.4604774	-104.8007832	0.00
3620.00	4.76	115.35	3614.61	-116.27	-56.93	120.15	40.4604676	-104.8007563	0.00
3720.00	4.76	115.35	3714.26	-123.53	-60.49	127.66	40.4604579	-104.8007293	0.00
3820.00	4.76	115.35	3813.92	-130.79	-64.04	135.16	40.4604481	-104.8007023	0.00
3920.00	4.76	115.35	3913.57	-138.05	-67.60	142.67	40.4604383	-104.8006754	0.00

GOETZEL_32C-30-M_PWP__REV-A.0_.las									
4020.00	4.76	115.35	4013.23	-145.32	-71.16	150.17	40.4604286	-104.8006484	0.00
4120.00	4.76	115.35	4112.88	-152.58	-74.71	157.68	40.4604188	-104.8006214	0.00
4220.00	4.76	115.35	4212.53	-159.84	-78.27	165.18	40.4604091	-104.8005945	0.00
4320.00	4.76	115.35	4312.19	-167.10	-81.82	172.69	40.4603993	-104.8005675	0.00
4420.00	4.76	115.35	4411.84	-174.36	-85.38	180.19	40.4603895	-104.8005405	0.00
4520.00	4.76	115.35	4511.50	-181.63	-88.94	187.70	40.4603798	-104.8005136	0.00
4620.00	4.76	115.35	4611.15	-188.89	-92.49	195.20	40.4603700	-104.8004866	0.00
4720.00	4.76	115.35	4710.81	-196.15	-96.05	202.70	40.4603602	-104.8004596	0.00
4820.00	4.76	115.35	4810.46	-203.41	-99.60	210.21	40.4603505	-104.8004326	0.00
4920.00	4.76	115.35	4910.12	-210.68	-103.16	217.71	40.4603407	-104.8004057	0.00
5020.00	4.76	115.35	5009.77	-217.94	-106.72	225.22	40.4603310	-104.8003787	0.00
5120.00	4.76	115.35	5109.43	-225.20	-110.27	232.72	40.4603212	-104.8003517	0.00
5220.00	4.76	115.35	5209.08	-232.46	-113.83	240.23	40.4603114	-104.8003248	0.00
5320.00	4.76	115.35	5308.73	-239.72	-117.39	247.73	40.4603017	-104.8002978	0.00
5420.00	4.76	115.35	5408.39	-246.99	-120.94	255.24	40.4602919	-104.8002708	0.00
5520.00	4.76	115.35	5508.04	-254.25	-124.50	262.74	40.4602822	-104.8002439	0.00
5620.00	4.76	115.35	5607.70	-261.51	-128.05	270.25	40.4602724	-104.8002169	0.00
5720.00	4.76	115.35	5707.35	-268.77	-131.61	277.75	40.4602626	-104.8001899	0.00
5820.00	4.76	115.35	5807.01	-276.04	-135.17	285.26	40.4602529	-104.8001630	0.00
5920.00	4.76	115.35	5906.66	-283.30	-138.72	292.76	40.4602431	-104.8001360	0.00
6020.00	4.76	115.35	6006.32	-290.56	-142.28	300.27	40.4602333	-104.8001090	0.00
6120.00	4.76	115.35	6105.97	-297.82	-145.83	307.77	40.4602236	-104.8000820	0.00
6220.00	4.76	115.35	6205.63	-305.08	-149.39	315.28	40.4602138	-104.8000551	0.00
6320.00	4.76	115.35	6305.28	-312.35	-152.95	322.78	40.4602041	-104.8000281	0.00
6420.00	4.76	115.35	6404.93	-319.61	-156.50	330.29	40.4601943	-104.8000011	0.00
6509.42	4.76	115.35	6494.05	-326.10	-159.68	337.00	40.4601856	-104.7999770	0.00
6520.00	3.95	121.80	6504.60	-326.78	-160.06	337.71	40.4601845	-104.7999745	9.00
6620.00	6.14	246.68	6604.39	-324.54	-164.00	335.71	40.4601737	-104.7999816	9.00
6720.00	14.89	259.37	6702.63	-306.71	-168.50	318.13	40.4601614	-104.8000448	9.00
6820.00	23.83	262.71	6796.88	-273.72	-173.44	285.39	40.4601478	-104.8001625	9.00
6920.00	32.80	264.29	6884.83	-226.40	-178.72	238.31	40.4601333	-104.8003317	9.00
7020.00	41.78	265.25	6964.31	-165.90	-184.19	178.04	40.4601183	-104.8005483	9.00
7120.00	50.77	265.92	7033.36	-93.72	-189.72	106.06	40.4601031	-104.8008069	9.00
7220.00	59.76	266.43	7090.28	-11.62	-195.17	24.15	40.4600882	-104.8011013	9.00
7320.00	68.75	266.86	7133.68	78.35	-200.42	-65.68	40.4600738	-104.8014241	9.00
7420.00	77.74	267.24	7162.47	174.00	-205.33	-161.21	40.4600603	-104.8017674	9.00
7520.00	86.74	267.60	7175.97	272.97	-209.78	-260.09	40.4600481	-104.8021227	9.00
7556.31	90.00	267.73	7177.00	309.24	-211.26	-296.35	40.4600440	-104.8022530	9.00
7620.00	90.00	267.73	7177.00	372.92	-213.79	-359.99	40.4600371	-104.8024817	0.00
7720.00	90.00	267.73	7177.00	472.89	-217.76	-459.91	40.4600262	-104.8028408	0.00
7820.00	90.00	267.73	7177.00	572.86	-221.73	-559.83	40.4600153	-104.8031999	0.00
7920.00	90.00	267.73	7177.00	672.83	-225.70	-659.75	40.4600043	-104.8035589	0.00
8020.00	90.00	267.73	7177.00	772.80	-229.67	-759.67	40.4599934	-104.8039180	0.00
8120.00	90.00	267.73	7177.00	872.77	-233.64	-859.60	40.4599825	-104.8042771	0.00
8220.00	90.00	267.73	7177.00	972.74	-237.61	-959.52	40.4599716	-104.8046361	0.00
8320.00	90.00	267.73	7177.00	1072.71	-241.58	-1059.44	40.4599607	-104.8049952	0.00
8420.00	90.00	267.73	7177.00	1172.68	-245.55	-1159.36	40.4599498	-104.8053543	0.00
8520.00	90.00	267.73	7177.00	1272.65	-249.52	-1259.28	40.4599389	-104.8057134	0.00

GOETZEL_32C-30-M_PWP__REV-A.0_.las									
8620.00	90.00	267.73	7177.00	1372.63	-253.49	-1359.20	40.4599280	-104.8060724	0.00
8720.00	90.00	267.73	7177.00	1472.60	-257.46	-1459.12	40.4599171	-104.8064315	0.00
8820.00	90.00	267.73	7177.00	1572.57	-261.43	-1559.04	40.4599062	-104.8067906	0.00
8920.00	90.00	267.73	7177.00	1672.54	-265.40	-1658.96	40.4598952	-104.8071497	0.00
9020.00	90.00	267.73	7177.00	1772.51	-269.37	-1758.89	40.4598843	-104.8075087	0.00
9120.00	90.00	267.73	7177.00	1872.48	-273.34	-1858.81	40.4598734	-104.8078678	0.00
9220.00	90.00	267.73	7177.00	1972.45	-277.31	-1958.73	40.4598625	-104.8082269	0.00
9320.00	90.00	267.73	7177.00	2072.42	-281.28	-2058.65	40.4598516	-104.8085859	0.00
9420.00	90.00	267.73	7177.00	2172.39	-285.25	-2158.57	40.4598406	-104.8089450	0.00
9520.00	90.00	267.73	7177.00	2272.36	-289.22	-2258.49	40.4598297	-104.8093041	0.00
9620.00	90.00	267.73	7177.00	2372.33	-293.19	-2358.41	40.4598188	-104.8096632	0.00
9720.00	90.00	267.73	7177.00	2472.30	-297.16	-2458.33	40.4598079	-104.8100222	0.00
9820.00	90.00	267.73	7177.00	2572.27	-301.13	-2558.26	40.4597970	-104.8103813	0.00
9920.00	90.00	267.73	7177.00	2672.24	-305.10	-2658.18	40.4597860	-104.8107404	0.00
10020.00	90.00	267.73	7177.00	2772.21	-309.07	-2758.10	40.4597751	-104.8110994	0.00
10120.00	90.00	267.73	7177.00	2872.18	-313.04	-2858.02	40.4597642	-104.8114585	0.00
10220.00	90.00	267.73	7177.00	2972.15	-317.01	-2957.94	40.4597532	-104.8118176	0.00
10320.00	90.00	267.73	7177.00	3072.13	-320.98	-3057.86	40.4597423	-104.8121767	0.00
10420.00	90.00	267.73	7177.00	3172.10	-324.95	-3157.78	40.4597314	-104.8125357	0.00
10520.00	90.00	267.73	7177.00	3272.07	-328.92	-3257.70	40.4597204	-104.8128948	0.00
10620.00	90.00	267.73	7177.00	3372.04	-332.89	-3357.62	40.4597095	-104.8132539	0.00
10720.00	90.00	267.73	7177.00	3472.01	-336.87	-3457.55	40.4596986	-104.8136129	0.00
10820.00	90.00	267.73	7177.00	3571.98	-340.84	-3557.47	40.4596876	-104.8139720	0.00
10920.00	90.00	267.73	7177.00	3671.95	-344.81	-3657.39	40.4596767	-104.8143311	0.00
11020.00	90.00	267.73	7177.00	3771.92	-348.78	-3757.31	40.4596658	-104.8146902	0.00
11120.00	90.00	267.73	7177.00	3871.89	-352.75	-3857.23	40.4596548	-104.8150492	0.00
11220.00	90.00	267.73	7177.00	3971.86	-356.72	-3957.15	40.4596439	-104.8154083	0.00
11320.00	90.00	267.73	7177.00	4071.83	-360.69	-4057.07	40.4596329	-104.8157674	0.00
11420.00	90.00	267.73	7177.00	4171.80	-364.66	-4156.99	40.4596220	-104.8161264	0.00
11520.00	90.00	267.73	7177.00	4271.77	-368.63	-4256.91	40.4596110	-104.8164855	0.00
11620.00	90.00	267.73	7177.00	4371.74	-372.60	-4356.84	40.4596001	-104.8168446	0.00
11720.00	90.00	267.73	7177.00	4471.71	-376.57	-4456.76	40.4595892	-104.8172036	0.00
11820.00	90.00	267.73	7177.00	4571.68	-380.54	-4556.68	40.4595782	-104.8175627	0.00
11920.00	90.00	267.73	7177.00	4671.65	-384.51	-4656.60	40.4595673	-104.8179218	0.00
12020.00	90.00	267.73	7177.00	4771.63	-388.48	-4756.52	40.4595563	-104.8182808	0.00
12120.00	90.00	267.73	7177.00	4871.60	-392.45	-4856.44	40.4595454	-104.8186399	0.00
12220.00	90.00	267.73	7177.00	4971.57	-396.42	-4956.36	40.4595344	-104.8189990	0.00
12320.00	90.00	267.73	7177.00	5071.54	-400.39	-5056.28	40.4595235	-104.8193581	0.00
12420.00	90.00	267.73	7177.00	5171.51	-404.36	-5156.21	40.4595125	-104.8197171	0.00
12520.00	90.00	267.73	7177.00	5271.48	-408.33	-5256.13	40.4595015	-104.8200762	0.00
12620.00	90.00	267.73	7177.00	5371.45	-412.30	-5356.05	40.4594906	-104.8204353	0.00
12720.00	90.00	267.73	7177.00	5471.42	-416.27	-5455.97	40.4594796	-104.8207943	0.00
12820.00	90.00	267.73	7177.00	5571.39	-420.24	-5555.89	40.4594687	-104.8211534	0.00
12920.00	90.00	267.73	7177.00	5671.36	-424.21	-5655.81	40.4594577	-104.8215125	0.00
13020.00	90.00	267.73	7177.00	5771.33	-428.18	-5755.73	40.4594467	-104.8218715	0.00
13120.00	90.00	267.73	7177.00	5871.30	-432.15	-5855.65	40.4594358	-104.8222306	0.00
13220.00	90.00	267.73	7177.00	5971.27	-436.12	-5955.57	40.4594248	-104.8225897	0.00
13320.00	90.00	267.73	7177.00	6071.24	-440.09	-6055.50	40.4594139	-104.8229487	0.00

GOETZEL_32C-30-M_PWP__REV-A.0_.las									
13420.00	90.00	267.73	7177.00	6171.21	-444.06	-6155.42	40.4594029	-104.8233078	0.00
13520.00	90.00	267.73	7177.00	6271.18	-448.03	-6255.34	40.4593919	-104.8236669	0.00
13620.00	90.00	267.73	7177.00	6371.15	-452.00	-6355.26	40.4593810	-104.8240259	0.00
13720.00	90.00	267.73	7177.00	6471.13	-455.97	-6455.18	40.4593700	-104.8243850	0.00
13820.00	90.00	267.73	7177.00	6571.10	-459.94	-6555.10	40.4593590	-104.8247441	0.00
13920.00	90.00	267.73	7177.00	6671.07	-463.91	-6655.02	40.4593481	-104.8251031	0.00
14020.00	90.00	267.73	7177.00	6771.04	-467.88	-6754.94	40.4593371	-104.8254622	0.00
14120.00	90.00	267.73	7177.00	6871.01	-471.85	-6854.86	40.4593261	-104.8258213	0.00
14220.00	90.00	267.73	7177.00	6970.98	-475.82	-6954.79	40.4593151	-104.8261803	0.00
14320.00	90.00	267.73	7177.00	7070.95	-479.79	-7054.71	40.4593042	-104.8265394	0.00
14420.00	90.00	267.73	7177.00	7170.92	-483.76	-7154.63	40.4592932	-104.8268985	0.00
14520.00	90.00	267.73	7177.00	7270.89	-487.73	-7254.55	40.4592822	-104.8272575	0.00
14620.00	90.00	267.73	7177.00	7370.86	-491.70	-7354.47	40.4592712	-104.8276166	0.00
14720.00	90.00	267.73	7177.00	7470.83	-495.67	-7454.39	40.4592602	-104.8279757	0.00
14820.00	90.00	267.73	7177.00	7570.80	-499.64	-7554.31	40.4592493	-104.8283347	0.00
14920.00	90.00	267.73	7177.00	7670.77	-503.61	-7654.23	40.4592383	-104.8286938	0.00
15020.00	90.00	267.73	7177.00	7770.74	-507.58	-7754.16	40.4592273	-104.8290529	0.00
15120.00	90.00	267.73	7177.00	7870.71	-511.55	-7854.08	40.4592163	-104.8294119	0.00
15220.00	90.00	267.73	7177.00	7970.68	-515.52	-7954.00	40.4592053	-104.8297710	0.00
15320.00	90.00	267.73	7177.00	8070.65	-519.49	-8053.92	40.4591943	-104.8301301	0.00
15420.00	90.00	267.73	7177.00	8170.63	-523.46	-8153.84	40.4591834	-104.8304891	0.00
15468.70	90.00	267.73	7177.00	8219.31	-525.40	-8202.50	40.4591780	-104.8306640	0.00



Planned Wellpath Report

GOETZEL 32C-30-M PWP (REV-A.0)

Page 1 of 7



REFERENCE WELLPATH IDENTIFICATION

Operator	SYNERGY RESOURCES CORPORATION	Slot	SLOT#11 GOETZEL 32C-30-M (2073'FNL & 2446'FEL, SEC.29)
Area	COLORADO	Well	GOETZEL 32C-30-M
Field	WELD COUNTY (NAD83,TRUE NORTH)	Wellbore	GOETZEL 32C-30-M PWB
Facility	SEC.29-T06N-R66W		

REPORT SETUP INFORMATION

Projection System	NAD83 / Lambert Colorado SP, Northern Zone (501), US feet	Software System	WellArchitect® 5.0
North Reference	True	User	Ingmjmr
Scale	0.999964	Report Generated	11/15/2016 at 10:38:29 AM
Convergence at slot	0.46° East	Database/Source file	WA_DEN_Denver_Defn/GOETZEL_32C-30-M_PWP_REV-A.0_.xml

WELLPATH LOCATION

	Local coordinates		Grid coordinates		Geographic coordinates	
	North[ft]	East[ft]	Easting[US ft]	Northing[US ft]	Latitude	Longitude
Slot Location	-260.16	-1.41	3194450.31	1411411.83	40°27'38.246"N	104°48'04.277"W
Facility Reference Pt			3194449.66	1411671.99	40°27'40.817"N	104°48'04.259"W
Field Reference Pt			3171284.48	1426358.81	40°30'07.643"N	104°53'02.634"W

WELLPATH DATUM

Calculation method	Minimum curvature	PRECISION 462 (20'KB) (RKB) to Facility Vertical Datum	4748.00ft
Horizontal Reference Pt	Slot	PRECISION 462 (20'KB) (RKB) to Mean Sea Level	4748.00ft
Vertical Reference Pt	PRECISION 462 (20'KB) (RKB)	PRECISION 462 (20'KB) (RKB) to Mud Line at Slot (SLOT#11 GOETZEL 32C-30-M (2073'FNL & 2446'FEL, SEC.29))	4748.00ft
MD Reference Pt	PRECISION 462 (20'KB) (RKB)	Section Origin	N 0.00, E 0.00 ft
Field Vertical Reference	Mean Sea Level	Section Azimuth	266.34°



Planned Wellpath Report

GOETZEL 32C-30-M PWP (REV-A.0)

Page 2 of 7



REFERENCE WELLPATH IDENTIFICATION

Operator	SYNERGY RESOURCES CORPORATION	Slot	SLOT#11 GOETZEL 32C-30-M (2073'FNL & 2446'FEL, SEC.29)
Area	COLORADO	Well	GOETZEL 32C-30-M
Field	WELD COUNTY (NAD83,TRUE NORTH)	Wellbore	GOETZEL 32C-30-M PWB
Facility	SEC.29-T06N-R66W		

WELLPATH DATA (161 stations) † = interpolated/extrapolated station

MD [ft]	Inclination [°]	Azimuth [°]	TVD [ft]	Vert Sect [ft]	North [ft]	East [ft]	DLS [°/100ft]	Comments
0.00†	0.000	115.353	0.00	0.00	0.00	0.00	0.00	
20.00	0.000	115.353	20.00	0.00	0.00	0.00	0.00	Tie On
120.00†	0.000	115.353	120.00	0.00	0.00	0.00	0.00	
220.00†	0.000	115.353	220.00	0.00	0.00	0.00	0.00	
320.00†	0.000	115.353	320.00	0.00	0.00	0.00	0.00	
420.00†	0.000	115.353	420.00	0.00	0.00	0.00	0.00	
520.00†	0.000	115.353	520.00	0.00	0.00	0.00	0.00	
620.00†	0.000	115.353	620.00	0.00	0.00	0.00	0.00	
720.00†	0.000	115.353	720.00	0.00	0.00	0.00	0.00	
820.00†	0.000	115.353	820.00	0.00	0.00	0.00	0.00	
920.00†	0.000	115.353	920.00	0.00	0.00	0.00	0.00	
1020.00†	0.000	115.353	1020.00	0.00	0.00	0.00	0.00	
1120.00†	0.000	115.353	1120.00	0.00	0.00	0.00	0.00	
1220.00†	0.000	115.353	1220.00	0.00	0.00	0.00	0.00	
1320.00†	0.000	115.353	1320.00	0.00	0.00	0.00	0.00	
1420.00†	0.000	115.353	1420.00	0.00	0.00	0.00	0.00	
1520.00†	0.000	115.353	1520.00	0.00	0.00	0.00	0.00	
1620.00†	0.000	115.353	1620.00	0.00	0.00	0.00	0.00	
1720.00†	0.000	115.353	1720.00	0.00	0.00	0.00	0.00	
1820.00†	0.000	115.353	1820.00	0.00	0.00	0.00	0.00	
1900.00	0.000	115.353	1900.00	0.00	0.00	0.00	0.00	End of Tangent
1920.00†	0.400	115.353	1920.00	-0.06	-0.03	0.06	2.00	
2020.00†	2.400	115.353	2019.96	-2.20	-1.08	2.27	2.00	
2120.00†	4.400	115.353	2119.78	-7.38	-3.62	7.63	2.00	
2138.19	4.764	115.353	2137.91	-8.65	-4.24	8.94	2.00	End of Build
2220.00†	4.764	115.353	2219.44	-14.60	-7.15	15.08	0.00	
2320.00†	4.764	115.353	2319.10	-21.86	-10.70	22.59	0.00	
2420.00†	4.764	115.353	2418.75	-29.12	-14.26	30.09	0.00	
2520.00†	4.764	115.353	2518.41	-36.38	-17.82	37.60	0.00	
2620.00†	4.764	115.353	2618.06	-43.64	-21.37	45.10	0.00	
2720.00†	4.764	115.353	2717.72	-50.91	-24.93	52.61	0.00	
2820.00†	4.764	115.353	2817.37	-58.17	-28.48	60.11	0.00	
2920.00†	4.764	115.353	2917.02	-65.43	-32.04	67.62	0.00	
3020.00†	4.764	115.353	3016.68	-72.69	-35.60	75.12	0.00	
3120.00†	4.764	115.353	3116.33	-79.96	-39.15	82.63	0.00	
3220.00†	4.764	115.353	3215.99	-87.22	-42.71	90.13	0.00	
3320.00†	4.764	115.353	3315.64	-94.48	-46.26	97.64	0.00	
3420.00†	4.764	115.353	3415.30	-101.74	-49.82	105.14	0.00	
3520.00†	4.764	115.353	3514.95	-109.00	-53.38	112.65	0.00	
3620.00†	4.764	115.353	3614.61	-116.27	-56.93	120.15	0.00	
3720.00†	4.764	115.353	3714.26	-123.53	-60.49	127.66	0.00	
3820.00†	4.764	115.353	3813.92	-130.79	-64.04	135.16	0.00	
3920.00†	4.764	115.353	3913.57	-138.05	-67.60	142.67	0.00	
4020.00†	4.764	115.353	4013.23	-145.32	-71.16	150.17	0.00	
4120.00†	4.764	115.353	4112.88	-152.58	-74.71	157.68	0.00	



Planned Wellpath Report

GOETZEL 32C-30-M PWP (REV-A.0)

Page 3 of 7



REFERENCE WELLPATH IDENTIFICATION

Operator	SYNERGY RESOURCES CORPORATION	Slot	SLOT#11 GOETZEL 32C-30-M (2073'FNL & 2446'FEL, SEC.29)
Area	COLORADO	Well	GOETZEL 32C-30-M
Field	WELD COUNTY (NAD83,TRUE NORTH)	Wellbore	GOETZEL 32C-30-M PWB
Facility	SEC.29-T06N-R66W		

WELLPATH DATA (161 stations) † = interpolated/extrapolated station

MD [ft]	Inclination [°]	Azimuth [°]	TVD [ft]	Vert Sect [ft]	North [ft]	East [ft]	DLS [°/100ft]	Comments
4220.00†	4.764	115.353	4212.53	-159.84	-78.27	165.18	0.00	
4320.00†	4.764	115.353	4312.19	-167.10	-81.82	172.69	0.00	
4420.00†	4.764	115.353	4411.84	-174.36	-85.38	180.19	0.00	
4520.00†	4.764	115.353	4511.50	-181.63	-88.94	187.70	0.00	
4620.00†	4.764	115.353	4611.15	-188.89	-92.49	195.20	0.00	
4720.00†	4.764	115.353	4710.81	-196.15	-96.05	202.70	0.00	
4820.00†	4.764	115.353	4810.46	-203.41	-99.60	210.21	0.00	
4920.00†	4.764	115.353	4910.12	-210.68	-103.16	217.71	0.00	
5020.00†	4.764	115.353	5009.77	-217.94	-106.72	225.22	0.00	
5120.00†	4.764	115.353	5109.43	-225.20	-110.27	232.72	0.00	
5220.00†	4.764	115.353	5209.08	-232.46	-113.83	240.23	0.00	
5320.00†	4.764	115.353	5308.73	-239.72	-117.39	247.73	0.00	
5420.00†	4.764	115.353	5408.39	-246.99	-120.94	255.24	0.00	
5520.00†	4.764	115.353	5508.04	-254.25	-124.50	262.74	0.00	
5620.00†	4.764	115.353	5607.70	-261.51	-128.05	270.25	0.00	
5720.00†	4.764	115.353	5707.35	-268.77	-131.61	277.75	0.00	
5820.00†	4.764	115.353	5807.01	-276.04	-135.17	285.26	0.00	
5920.00†	4.764	115.353	5906.66	-283.30	-138.72	292.76	0.00	
6020.00†	4.764	115.353	6006.32	-290.56	-142.28	300.27	0.00	
6120.00†	4.764	115.353	6105.97	-297.82	-145.83	307.77	0.00	
6220.00†	4.764	115.353	6205.63	-305.08	-149.39	315.28	0.00	
6320.00†	4.764	115.353	6305.28	-312.35	-152.95	322.78	0.00	
6420.00†	4.764	115.353	6404.93	-319.61	-156.50	330.29	0.00	
6509.42	4.764	115.353	6494.05	-326.10	-159.68	337.00	0.00	End of Tangent
6520.00†	3.946	121.799	6504.60	-326.78	-160.06	337.71	9.00	
6620.00†	6.143	246.683	6604.39	-324.54	-164.00	335.71	9.00	
6720.00†	14.894	259.370	6702.63	-306.71	-168.50	318.13	9.00	
6820.00†	23.829	262.705	6796.88	-273.72	-173.44	285.39	9.00	
6920.00†	32.799	264.287	6884.83	-226.40	-178.72	238.31	9.00	
7020.00†	41.780	265.246	6964.31	-165.90	-184.19	178.04	9.00	
7120.00†	50.767	265.916	7033.36	-93.72	-189.72	106.06	9.00	
7220.00†	59.757	266.434	7090.28	-11.62	-195.17	24.15	9.00	
7320.00†	68.749	266.864	7133.68	78.35	-200.42	-65.68	9.00	
7420.00†	77.742	267.244	7162.47	174.00	-205.33	-161.21	9.00	
7520.00†	86.735	267.598	7175.97	272.97	-209.78	-260.09	9.00	
7556.31	90.000	267.725	7177.00 [†]	309.24	-211.26	-296.35	9.00	End of 3D Arc
7620.00†	90.000	267.725	7177.00	372.92	-213.79	-359.99	0.00	
7720.00†	90.000	267.725	7177.00	472.89	-217.76	-459.91	0.00	
7820.00†	90.000	267.725	7177.00	572.86	-221.73	-559.83	0.00	
7920.00†	90.000	267.725	7177.00	672.83	-225.70	-659.75	0.00	
8020.00†	90.000	267.725	7177.00	772.80	-229.67	-759.67	0.00	
8120.00†	90.000	267.725	7177.00	872.77	-233.64	-859.60	0.00	
8220.00†	90.000	267.725	7177.00	972.74	-237.61	-959.52	0.00	
8320.00†	90.000	267.725	7177.00	1072.71	-241.58	-1059.44	0.00	
8420.00†	90.000	267.725	7177.00	1172.68	-245.55	-1159.36	0.00	



Planned Wellpath Report

GOETZEL 32C-30-M PWP (REV-A.0)

Page 4 of 7



REFERENCE WELLPATH IDENTIFICATION

Operator	SYNERGY RESOURCES CORPORATION	Slot	SLOT#11 GOETZEL 32C-30-M (2073'FNL & 2446'FEL, SEC.29)
Area	COLORADO	Well	GOETZEL 32C-30-M
Field	WELD COUNTY (NAD83,TRUE NORTH)	Wellbore	GOETZEL 32C-30-M PWB
Facility	SEC.29-T06N-R66W		

WELLPATH DATA (161 stations) † = interpolated/extrapolated station

MD [ft]	Inclination [°]	Azimuth [°]	TVD [ft]	Vert Sect [ft]	North [ft]	East [ft]	DLS [°/100ft]	Comments
8520.00†	90.000	267.725	7177.00	1272.65	-249.52	-1259.28	0.00	
8620.00†	90.000	267.725	7177.00	1372.63	-253.49	-1359.20	0.00	
8720.00†	90.000	267.725	7177.00	1472.60	-257.46	-1459.12	0.00	
8820.00†	90.000	267.725	7177.00	1572.57	-261.43	-1559.04	0.00	
8920.00†	90.000	267.725	7177.00	1672.54	-265.40	-1658.96	0.00	
9020.00†	90.000	267.725	7177.00	1772.51	-269.37	-1758.89	0.00	
9120.00†	90.000	267.725	7177.00	1872.48	-273.34	-1858.81	0.00	
9220.00†	90.000	267.725	7177.00	1972.45	-277.31	-1958.73	0.00	
9320.00†	90.000	267.725	7177.00	2072.42	-281.28	-2058.65	0.00	
9420.00†	90.000	267.725	7177.00	2172.39	-285.25	-2158.57	0.00	
9520.00†	90.000	267.725	7177.00	2272.36	-289.22	-2258.49	0.00	
9620.00†	90.000	267.725	7177.00	2372.33	-293.19	-2358.41	0.00	
9720.00†	90.000	267.725	7177.00	2472.30	-297.16	-2458.33	0.00	
9820.00†	90.000	267.725	7177.00	2572.27	-301.13	-2558.26	0.00	
9920.00†	90.000	267.725	7177.00	2672.24	-305.10	-2658.18	0.00	
10020.00†	90.000	267.725	7177.00	2772.21	-309.07	-2758.10	0.00	
10120.00†	90.000	267.725	7177.00	2872.18	-313.04	-2858.02	0.00	
10220.00†	90.000	267.725	7177.00	2972.15	-317.01	-2957.94	0.00	
10320.00†	90.000	267.725	7177.00	3072.13	-320.98	-3057.86	0.00	
10420.00†	90.000	267.725	7177.00	3172.10	-324.95	-3157.78	0.00	
10520.00†	90.000	267.725	7177.00	3272.07	-328.92	-3257.70	0.00	
10620.00†	90.000	267.725	7177.00	3372.04	-332.89	-3357.62	0.00	
10720.00†	90.000	267.725	7177.00	3472.01	-336.87	-3457.55	0.00	
10820.00†	90.000	267.725	7177.00	3571.98	-340.84	-3557.47	0.00	
10920.00†	90.000	267.725	7177.00	3671.95	-344.81	-3657.39	0.00	
11020.00†	90.000	267.725	7177.00	3771.92	-348.78	-3757.31	0.00	
11120.00†	90.000	267.725	7177.00	3871.89	-352.75	-3857.23	0.00	
11220.00†	90.000	267.725	7177.00	3971.86	-356.72	-3957.15	0.00	
11320.00†	90.000	267.725	7177.00	4071.83	-360.69	-4057.07	0.00	
11420.00†	90.000	267.725	7177.00	4171.80	-364.66	-4156.99	0.00	
11520.00†	90.000	267.725	7177.00	4271.77	-368.63	-4256.91	0.00	
11620.00†	90.000	267.725	7177.00	4371.74	-372.60	-4356.84	0.00	
11720.00†	90.000	267.725	7177.00	4471.71	-376.57	-4456.76	0.00	
11820.00†	90.000	267.725	7177.00	4571.68	-380.54	-4556.68	0.00	
11920.00†	90.000	267.725	7177.00	4671.65	-384.51	-4656.60	0.00	
12020.00†	90.000	267.725	7177.00	4771.63	-388.48	-4756.52	0.00	
12120.00†	90.000	267.725	7177.00	4871.60	-392.45	-4856.44	0.00	
12220.00†	90.000	267.725	7177.00	4971.57	-396.42	-4956.36	0.00	
12320.00†	90.000	267.725	7177.00	5071.54	-400.39	-5056.28	0.00	
12420.00†	90.000	267.725	7177.00	5171.51	-404.36	-5156.21	0.00	
12520.00†	90.000	267.725	7177.00	5271.48	-408.33	-5256.13	0.00	
12620.00†	90.000	267.725	7177.00	5371.45	-412.30	-5356.05	0.00	
12720.00†	90.000	267.725	7177.00	5471.42	-416.27	-5455.97	0.00	
12820.00†	90.000	267.725	7177.00	5571.39	-420.24	-5555.89	0.00	
12920.00†	90.000	267.725	7177.00	5671.36	-424.21	-5655.81	0.00	



Planned Wellpath Report

GOETZEL 32C-30-M PWP (REV-A.0)

Page 5 of 7



REFERENCE WELLPATH IDENTIFICATION

Operator	SYNERGY RESOURCES CORPORATION	Slot	SLOT#11 GOETZEL 32C-30-M (2073'FNL & 2446'FEL, SEC.29)
Area	COLORADO	Well	GOETZEL 32C-30-M
Field	WELD COUNTY (NAD83,TRUE NORTH)	Wellbore	GOETZEL 32C-30-M PWB
Facility	SEC.29-T06N-R66W		

WELLPATH DATA (161 stations) † = interpolated/extrapolated station

MD [ft]	Inclination [°]	Azimuth [°]	TVD [ft]	Vert Sect [ft]	North [ft]	East [ft]	DLS [°/100ft]	Comments
13020.00†	90.000	267.725	7177.00	5771.33	-428.18	-5755.73	0.00	
13120.00†	90.000	267.725	7177.00	5871.30	-432.15	-5855.65	0.00	
13220.00†	90.000	267.725	7177.00	5971.27	-436.12	-5955.57	0.00	
13320.00†	90.000	267.725	7177.00	6071.24	-440.09	-6055.50	0.00	
13420.00†	90.000	267.725	7177.00	6171.21	-444.06	-6155.42	0.00	
13520.00†	90.000	267.725	7177.00	6271.18	-448.03	-6255.34	0.00	
13620.00†	90.000	267.725	7177.00	6371.15	-452.00	-6355.26	0.00	
13720.00†	90.000	267.725	7177.00	6471.13	-455.97	-6455.18	0.00	
13820.00†	90.000	267.725	7177.00	6571.10	-459.94	-6555.10	0.00	
13920.00†	90.000	267.725	7177.00	6671.07	-463.91	-6655.02	0.00	
14020.00†	90.000	267.725	7177.00	6771.04	-467.88	-6754.94	0.00	
14120.00†	90.000	267.725	7177.00	6871.01	-471.85	-6854.86	0.00	
14220.00†	90.000	267.725	7177.00	6970.98	-475.82	-6954.79	0.00	
14320.00†	90.000	267.725	7177.00	7070.95	-479.79	-7054.71	0.00	
14420.00†	90.000	267.725	7177.00	7170.92	-483.76	-7154.63	0.00	
14520.00†	90.000	267.725	7177.00	7270.89	-487.73	-7254.55	0.00	
14620.00†	90.000	267.725	7177.00	7370.86	-491.70	-7354.47	0.00	
14720.00†	90.000	267.725	7177.00	7470.83	-495.67	-7454.39	0.00	
14820.00†	90.000	267.725	7177.00	7570.80	-499.64	-7554.31	0.00	
14920.00†	90.000	267.725	7177.00	7670.77	-503.61	-7654.23	0.00	
15020.00†	90.000	267.725	7177.00	7770.74	-507.58	-7754.16	0.00	
15120.00†	90.000	267.725	7177.00	7870.71	-511.55	-7854.08	0.00	
15220.00†	90.000	267.725	7177.00	7970.68	-515.52	-7954.00	0.00	
15320.00†	90.000	267.725	7177.00	8070.65	-519.49	-8053.92	0.00	
15420.00†	90.000	267.725	7177.00	8170.63	-523.46	-8153.84	0.00	
15468.70	90.000	267.725	7177.00 ²	8219.31	-525.40	-8202.50	0.00	End of Tangent

HOLE & CASING SECTIONS

- Ref Wellbore: GOETZEL 32C-30-M PWB Ref Wellpath: GOETZEL 32C-30-M PWP (REV-A.0)

String/Diameter	Start MD [ft]	End MD [ft]	Interval [ft]	Start TVD [ft]	End TVD [ft]	Start N/S [ft]	Start E/W [ft]	End N/S [ft]	End E/W [ft]
13.5in Open Hole	20.00	1700.00	1680.00	20.00	1700.00	0.00	0.00	0.00	0.00
9.625in Casing Surface	20.00	1700.00	1680.00	20.00	1700.00	0.00	0.00	0.00	0.00
8.5in Open Hole	1700.00	15468.70	13768.70	1700.00	7177.00	0.00	0.00	-525.40	-8202.50



Planned Wellpath Report

GOETZEL 32C-30-M PWP (REV-A.0)

Page 6 of 7



REFERENCE WELLPATH IDENTIFICATION

Operator	SYNERGY RESOURCES CORPORATION	Slot	SLOT#11 GOETZEL 32C-30-M (2073'FNL & 2446'FEL, SEC.29)
Area	COLORADO	Well	GOETZEL 32C-30-M
Field	WELD COUNTY (NAD83,TRUE NORTH)	Wellbore	GOETZEL 32C-30-M PWB
Facility	SEC.29-T06N-R66W		

TARGETS

Name	MD [ft]	TVD [ft]	North [ft]	East [ft]	Grid East [US ft]	Grid North [US ft]	Latitude	Longitude	Shape
SEC.29-T06N-R66W NORTHERN		0.00	260.16	1.41	3194449.66	1411671.99	40°27'40.817"N	104°48'04.259"W	polygon
SEC.29-T06N-R66W SOUTHERN		0.00	260.16	1.41	3194449.66	1411671.99	40°27'40.817"N	104°48'04.259"W	polygon
SEC.30-T06N-R66W NORTHERN		0.00	260.16	1.41	3194449.66	1411671.99	40°27'40.817"N	104°48'04.259"W	polygon
SEC.30-T06N-R66W SOUTHERN		0.00	260.16	1.41	3194449.66	1411671.99	40°27'40.817"N	104°48'04.259"W	polygon
2) GOETZEL 32C-30-M BHL REV-1 (2303'FNL & 510'FWL, SEC.30)	15468.70	7177.00	-525.40	-8202.50	3186252.51	1410821.83	40°27'33.041"N	104°49'50.390"W	circle
1) GOETZEL 32C-30-M TOP REV-1 (2278'FNL & 2577'FWL, SEC.29)	7556.31	7177.00	-211.26	-296.35	3194155.64	1411198.25	40°27'36.158"N	104°48'08.111"W	circle

SURVEY PROGRAM -

Ref Wellbore: GOETZEL 32C-30-M PWB Ref Wellpath: GOETZEL 32C-30-M PWP (REV-A.0)

Start MD [ft]	End MD [ft]	Positional Uncertainty Model	Log Name/Comment	Wellbore
20.00	1700.00	Custom BHI NaviTrak (Standard Rotating) (Rockies 0.03Gt model)		GOETZEL 32C-30-M PWB
1700.00	15468.70	Custom BHI AutoTrak Curve (Short) (Rockies 0.03Gt model)		GOETZEL 32C-30-M PWB



Planned Wellpath Report

GOETZEL 32C-30-M PWP (REV-A.0)

Page 7 of 7



REFERENCE WELLPATH IDENTIFICATION			
Operator	SYNERGY RESOURCES CORPORATION	Slot	SLOT#11 GOETZEL 32C-30-M (2073'FNL & 2446'FEL, SEC.29)
Area	COLORADO	Well	GOETZEL 32C-30-M
Field	WELD COUNTY (NAD83,TRUE NORTH)	Wellbore	GOETZEL 32C-30-M PWB
Facility	SEC.29-T06N-R66W		

DESIGN COMMENTS				
MD [ft]	Inclination [°]	Azimuth [°]	TVD [ft]	Comment
20.00	0.000	115.353	20.00	Tie On
1900.00	0.000	115.353	1900.00	End of Tangent
2138.19	4.764	115.353	2137.91	End of Build
6509.42	4.764	115.353	6494.05	End of Tangent
7556.31	90.000	267.725	7177.00	End of 3D Arc
15468.70	90.000	267.725	7177.00	End of Tangent