



December 20, 2016

Mr. Matt Lepore, Director  
Colorado Oil and Gas Conservation Commission  
1120 Lincoln Street, Suite 801  
Denver, CO 80203

**RE: COGCC Rule 318A.e.: Proposed Wellbore Spacing Unit**

Goetzel 31N-30C-M  
6N-66W Sec 29: NW/4, W/2NE/4; Sec 30: N/2  
605.53 Acres

Dear Mr. Lepore,

Synergy Resources Corporation (Synergy) is planning to drill the above referenced well in accordance with the provisions set out in COGCC Rule 318A.e. Synergy's proposed wellbore spacing unit consists of:

Goetzel 31N-30C-M  
6N-66W Sec 29: NW/4, W/2NE/4; Sec 30: N/2  
605.53 Acres

Synergy is not the only owner within the proposed wellbore spacing unit and hereby certifies to the Director that a thirty day (30-day) notice has been given by certified mail to all owners in the proposed wellbore spacing unit, as required by COGCC Rule 318A.e. (6). Copies of the required notification letters are on file at Synergy's office. The required thirty (30) day notice period has elapsed absent the receipt by Synergy of any objection to their proposal by the owner(s) within the proposed spacing unit for the subject well. Bayswater Exploration & Production, LLC submitted a competing spacing application identified by Docket No. 160800374. On Friday, December 16, 2016 Bayswater sent a request to withdraw their application via email to Jill Dorancy (copy attached). With this resolution of the competing applications and no Owner objections, Synergy Resources hereby requests the Director to approve the well.

Enclosed is the Proposed Spacing Unit Plat to assist in your review and approval of Synergy's proposed Application for Permit to Drill (APD) for Goetzel 31N-30C-M well. Synergy respectfully requests the COGCC to review the enclosed information and approve the exception location waiver request per Surface Use Agreement and APD for Goetzel 31N-30C-M.

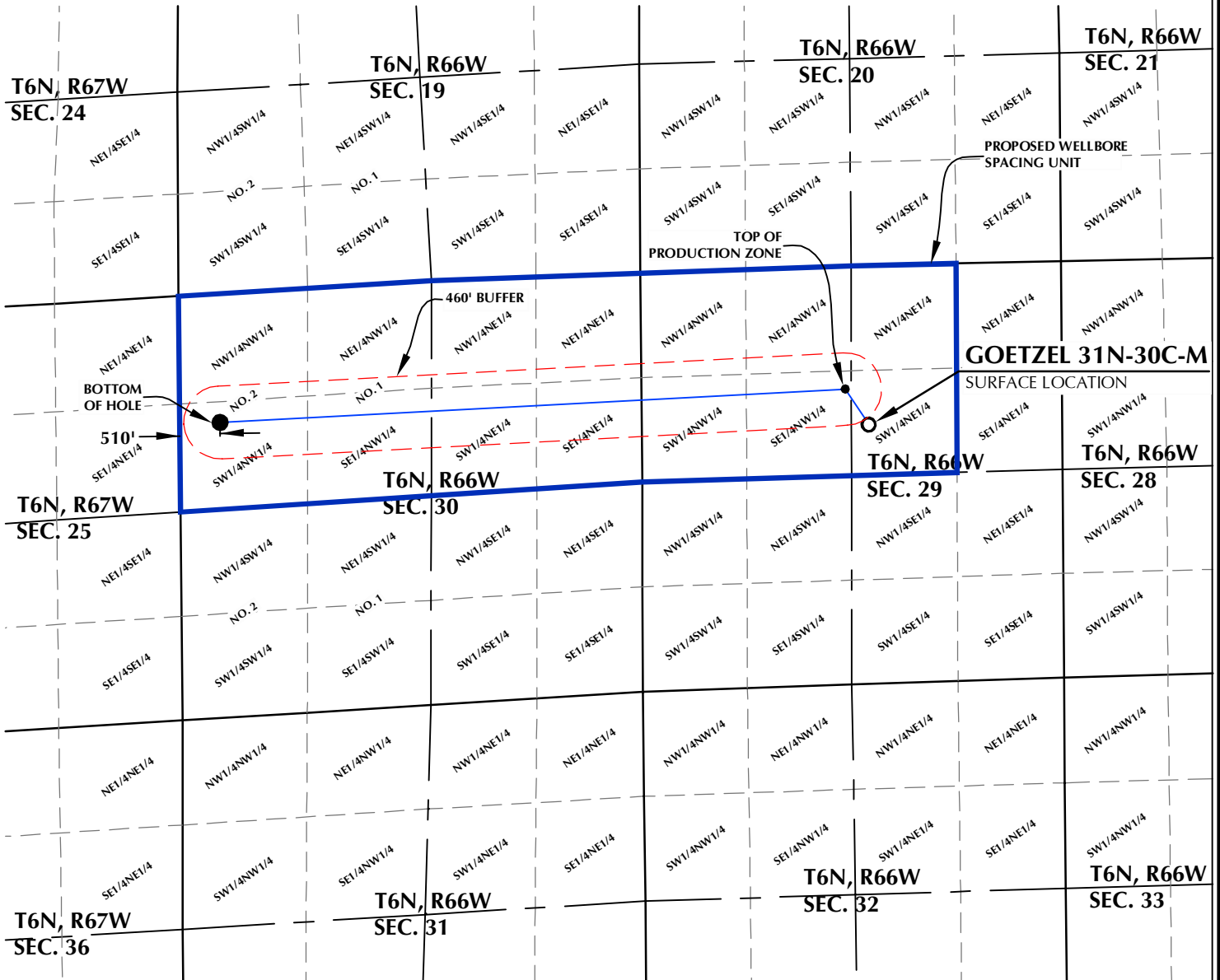
Thank you,

*Erin Ekblad*

Erin Ekblad  
Manager of Regulatory Affairs  
Synergy Resources Corporation

Attachments: Proposed Spacing Unit Plat, Bayswater withdrawal request email

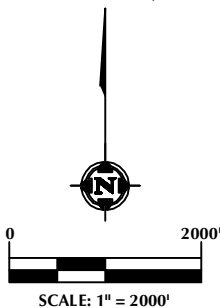
# GOETZEL 31N-30C-M WELLBORE SPACING UNIT



**SURFACE LOCATION**  
GROUND ELEVATION= 4728.2'  
LATITUDE= 40.460789°  
LONGITUDE= -104.801187°  
1/4 1/4: SW1/4 NE1/4

**TOP OF PRODUCTION**  
LATITUDE= 40.462032°  
LONGITUDE= -104.802238°  
1/4 1/4: SE1/4 NW1/4

**BOTTOM HOLE LOCATION**  
LATITUDE= 40.461041°  
LONGITUDE= -104.830670°  
1/4 1/4: SW1/4 NW1/4



**DISTANCE FROM COMPLETED  
PORTION OF WELLBORE TO  
NEAREST UNIT BOUNDARY= 510'**  
**NOTES:**

1. DRAWING LATITUDE AND LONGITUDE COORDINATES ARE NAD 83 (2011)(EPOCH:2010)
2. ELEVATION BASED ON NAVD88 (GEOID12B)
3. BASIS OF BEARING DERIVED FROM COLORADO COORDINATE SYSTEM OF 1983 NORTH ZONE.
4. ALL MEASURED DISTANCES ARE GRID. COMBINED SCALE FACTOR: .99974048 CALCULATED FROM THE W. 1/4 CORNER OF SECTION 29
5. NO. 1 & NO. 2 AS SHOWN HEREON ARE GOVERNMENT LOTS 1 & 2 PER THE ORIGINAL GLO SURVEY

## WELL PAD - GOETZEL 7-29

GOETZEL 31N-30C-M  
WELLBORE SPACING UNIT  
2013' FNL & 2446' FEL SWNE (SURFACE)  
1554' FNL & 2582' FWL SENW (TOP OF PRODUCTION)  
LOCATED IN SECTION 29  
1625' FNL & 510' FWL LOT 2 (SWNW) (BOTTOM)  
LOCATED IN SECTION 30  
T6N, R66W, 6TH P.M.  
WELD COUNTY, COLORADO

**SYNERGY**  
RESOURCES CORPORATION  
1625 Broadway, Suite 300  
Denver, Colorado 80202



## CONSULTING, LLC

**SHERIDAN OFFICE**  
1095 Saberton Avenue  
Sheridan, Wyoming 82801  
Phone 307-674-0609

**LOVELAND OFFICE**  
1635 Foxtrail Drive, Suite 204  
Loveland, Colorado 80538  
Phone 970-776-4331

DRAFTED BY:	LMO	CHECKED BY:	JRS
DATE DRAFTED:	8/30/16	DATE SURVEYED:	7/7/16
REVISED:	12/1/16	FILE NAME:	16-81

**From:** Joe Pierzchala [<mailto:JPierzchala@wsmtlaw.com>]

**Sent:** Friday, December 16, 2016 12:10 PM

**To:** Jill Dorancy - DNR ([jill.dorancy@state.co.us](mailto:jill.dorancy@state.co.us))

**Cc:** [dnr\\_hearingapplications@state.co.us](mailto:dnr_hearingapplications@state.co.us); Julie Murphy - DNR ([Julie.Murphy@state.co.us](mailto:Julie.Murphy@state.co.us)); Jill Fulcher ([jfulcher@bwenergylaw.com](mailto:jfulcher@bwenergylaw.com)); Wozniak, Michael ([MWozniak@bwenergylaw.com](mailto:MWozniak@bwenergylaw.com)); [jparrot@bwenergylaw.com](mailto:jparrot@bwenergylaw.com); Jamie Jost ; Kelsey Wasylenky ([kwasylenky@jostenergylaw.com](mailto:kwasylenky@jostenergylaw.com)); Steve Sullivan; Sarah Sorum; Melissa Morman

**Subject:** 160800374 - Bayswater Request to Withdraw Application

Good afternoon, Ms. Dorancy.

Please accept this email as Bayswater Exploration & Production, LLC's request to withdraw its spacing application in Docket No. 160800374, which was protested by Synergy Resources Corporation and Great Western Operating Company, LLC. Counsel for Synergy and Great Western are copied on this withdrawal request.

Please confirm the withdrawal at your earliest convenience.

Regards,  
Joe

Joseph C. Pierzchala

Attorney

**Welborn Sullivan Meck & Tooley, P.C.**

1125 17th Street, Suite 2200, Denver, CO 80202

EMAIL: [jpierzchala@wsmtlaw.com](mailto:jpierzchala@wsmtlaw.com)

DIRECT: 303-376-4473

MAIN: 303-830-2500

FAX: 303-832-2366

[www.wsmtlaw.com](http://www.wsmtlaw.com)

NOTICE: This electronic mail transmission including any