

SYNERGY RESOURCES CORPORATION

Location: COLORADO Slot: SLOT#08 GOETZEL 31N-30C-M (2013FNL & 2446FEL, SEC.29)
Field: WELD COUNTY (NAD83,TRUE NORTH) Well: GOETZEL 31N-30C-M
Facility: SEC.29-T06N-R66W Wellbore: GOETZEL 31N-30C-M PWB

Plot reference wellpath is GOETZEL 31N-30C-M PWP (REV-A.0)
Grid System: NAD83 / Lambert Colorado SP, Northern Zone (501), US feet
True vertical depths are referenced to PRECISION 462 (20KB) (RKB) * = Wellpath was transformed from a different geodetic datum
Measured depths are referenced to PRECISION 462 (20KB) (RKB) North Reference: True north
PRECISION 462 (20KB) (RKB) to Mean Sea Level: 4748 feet Scale: True distance
Mean Sea Level to Mud line (At Slot: SLOT#08 GOETZEL 31N-30C-M (2013FNL & 2446FEL, SEC.29)): 0 feet Depths are in feet
Coordinates are in feet referenced to Slot Created by: ingmjamm on 2016-11-15
Database: WA_DEN_Denver_Dein

Location Information

Facility Name				Grid East (US ft)	Grid North (US ft)	Latitude	Longitude
SEC.29-T06N-R66W				319449.862	1411671.988	40°27'40.817"N	104°48'04.259"W
Slot	Local N (ft)	Local E (ft)	Grid East (US ft)	Grid North (US ft)	Latitude	Longitude	
SLOT#08 GOETZEL 31N-30C-M (2013FNL & 2446FEL, SEC.29)	-200.05	-1.10	319449.811	1411471.943	40°27'38.840"N	104°48'04.273"W	
PRECISION 462 (20KB) (RKB) to Mud line (At Slot: SLOT#08 GOETZEL 31N-30C-M (2013FNL & 2446FEL, SEC.29))						4748ft	
Mean Sea Level to Mud line (At Slot: SLOT#08 GOETZEL 31N-30C-M (2013FNL & 2446FEL, SEC.29))						0ft	
PRECISION 462 (20KB) (RKB) to Mean Sea Level						4748ft	

Tie-On Position

MD (ft)	Inc (°)	Az (°)	TVD (ft)	Local N (ft)	Local E (ft)	Grid East (US ft)	Grid North (US ft)	Latitude	Longitude
20.00	0.000	39.487	20.00	0.00	0.00	3194450.14	1411471.94	40°27'38.840"N	104°48'04.273"W

Well Profile Data

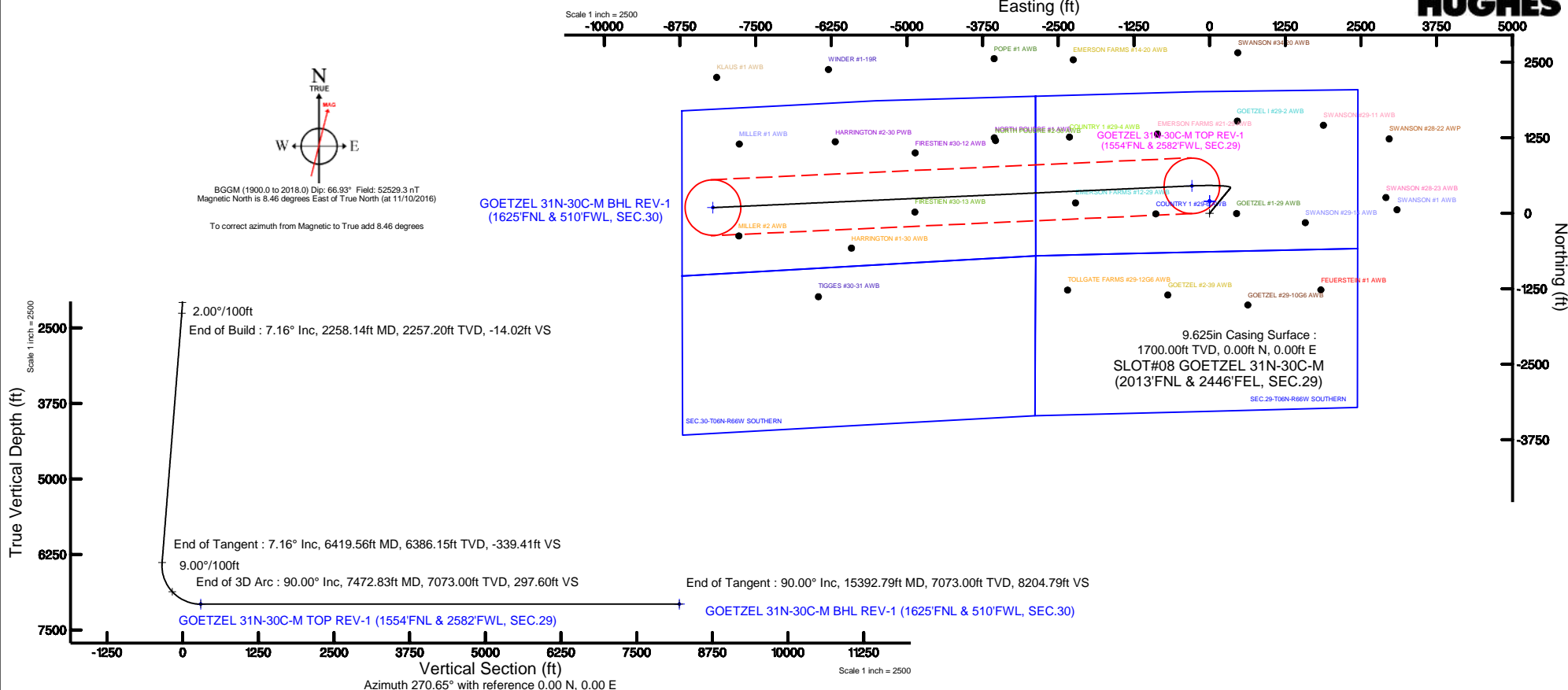
Design Comment	MD (ft)	Inc (°)	Az (°)	TVD (ft)	Local N (ft)	Local E (ft)	DLS (°/100ft)	VS (ft)
Tie On	20.00	0.000	39.487	20.00	0.00	0.00	0.00	0.00
End of Tangent	1900.00	0.000	39.487	1900.00	0.00	0.00	0.00	0.00
End of Build	2258.14	7.163	39.487	2257.20	17.25	14.22	2.00	-14.02
End of Tangent	6419.56	7.163	39.487	6386.15	417.71	344.17	0.00	-339.41
End of 3D Arc	7472.83	90.000	267.397	7073.00	452.89	-292.47	9.00	297.60
End of Tangent	15392.79	90.000	267.397	7073.00	93.21	-8204.26	0.00	8204.79

Survey Program

Start MD (ft)	End MD (ft)	Tool	Model	Log Name/Comment	Wellbore
20.00	1700.00	BHI NavTrak	Custom BHI NavTrak (Standard Rotating) (Rockies 0.03Gt model)		GOETZEL 31N-30C-M PWB
1700.00	15392.79	BHI AutoTrak Curve	Custom BHI AutoTrak Curve (Short) (Rockies 0.03Gt model)		GOETZEL 31N-30C-M PWB

Targets

Name	MD (ft)	TVD (ft)	Local N (ft)	Local E (ft)	Grid East (US ft)	Grid North (US ft)	Latitude	Longitude
SEC.29-T06N-R66W NORTHERN	0.00	200.05	1.10		3194449.66	1411671.99	40°27'40.817"N	104°48'04.259"W
SEC.29-T06N-R66W SOUTHERN	0.00	200.05	1.10		3194449.66	1411671.99	40°27'40.817"N	104°48'04.259"W
SEC.30-T06N-R66W NORTHERN	0.00	200.05	1.10		3194449.66	1411671.99	40°27'40.817"N	104°48'04.259"W
SEC.30-T06N-R66W SOUTHERN	0.00	200.05	1.10		3194449.66	1411671.99	40°27'40.817"N	104°48'04.259"W
GOETZEL 31N-30C-M BHL REV-1 (1625FNL & 510FWL, SEC.30)	15392.79	7073.00	93.21	-8204.26	3186245.72	1411500.50	40°27'39.748"N	104°48'05.412"W
GOETZEL 31N-30C-M TOP REV-1 (1554FNL & 2582FWL, SEC.29)	7472.83	7073.00	452.89	-292.47	3194154.12	1411922.49	40°27'43.315"N	104°48'08.057"W



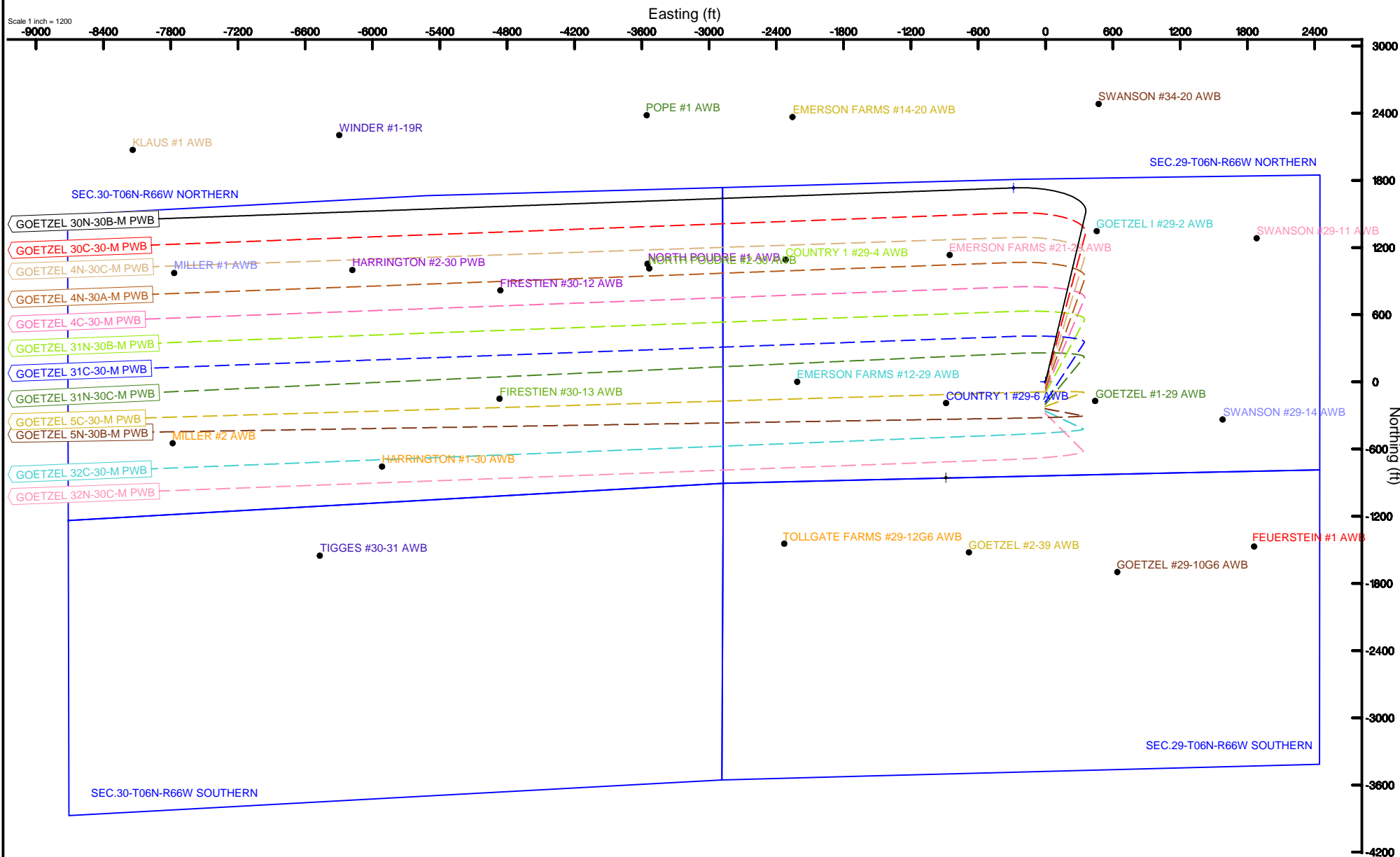
SYNERGY RESOURCES CORPORATION

Location: COLORADO Slot: SLOT#01 GOETZEL 30N-30B-M (1813'FNL & 2445'FEL, SEC.29)
Field: WELD COUNTY (NAD83,TRUE NORTH) Well: GOETZEL 30N-30B-M
Facility: SEC.29-T06N-R66W Wellbore: GOETZEL 30N-30B-M PWB



BGGM (1900.0 to 2018.0) Dip: 66.93° Field: 52529.3 nT
Magnetic North is 8.46 degrees East of True North (at 11/10/2016)

To correct azimuth from Magnetic to True add 8.46 degrees



GOETZEL_31N-30C-M_PWP__REV-A.0_.1as

~VERSION INFORMATION

VERS. 2.0 : CWLS LOG ASCII STANDARD-VERSION 2.0

WRAP. NO : ASCII DATA SECTION CONTAINS ONE ROW PER WELLPATH STATION

~WELL INFORMATION

#MNEM	.UNITS	DATA	:DESCRIPTION
#----	.-----	----	:-----
STRT	.ft	0.00	:START MD
STOP	.ft	15392.79	:STOP MD
STEP	.ft	0.0	:STEP (non-uniform increment)
NULL	.	-999.99	:NULL
COMP	.	SYNERGY RESOURCES CORPORATION	:OPERATOR
WELL	.	GOETZEL 31N-30C-M	:WELL
FLD	.	WELD COUNTY (NAD83,TRUE NORTH)	:FIELD
LOC	.	COLORADO	:AREA (aka: Location)
CNTY	.	N/A	:COUNTY
STAT	.	N/A	:STATE
CTRY	.	N/A	:COUNTRY
SRVC	.	Baker Hughes	:CONTRACTOR
DATE	.	11/10/2016	:LOG REV DATE
API	.		:API NUMBER

~OTHER INFORMATION

#Software: WellArchitect(R) Version 5.0

#MNEM	.UNITS	DATA	:DESCRIPTION
#----	.-----	----	:-----
WPTYPE	.	PLANNED WELLPATH	:WELLPATH TYPE
FACILITY	.	SEC.29-T06N-R66W	:FACILITY
SLOT	.	SLOT#08 GOETZEL 31N-30C-M (2013'FNL & 2446'FEL, SEC.29):SLOT	:SLOT
WELLBORE	.	GOETZEL 31N-30C-M PWB	:WELLBORE
WELLPATH	.	GOETZEL 31N-30C-M PWP (REV-A.0)	:WELLPATH
MDREFPT	.	PRECISION 462 (20'KB) (RKB)	:MD REFERENCE POINT
TVDREFPT	.	PRECISION 462 (20'KB) (RKB)	:TVD REFERENCE POINT
LCLREFPT	.	SLOT	:LOCAL COORDINATE REFERENCE PT
VSAZIMUTH	.deg	270.65	:VERTICAL SECTION AZIMUTH
VSORIGN	.ft	0.00	:VERTICAL SECTION ORIGIN NORTH
VSORIGE	.ft	0.00	:VERTICAL SECTION ORIGIN EAST

~CURVE (WELLPATH) INFORMATION

#MNEM	.UNITS	:DESCRIPTION
#----	.-----	:-----
DEPT	.ft	:MEASURED DEPTH
INC	.deg	:INCLINATION
AZI	.deg	:AZIMUTH
TVD	.ft	:TRUE VERTICAL DEPTH
SECT	.ft	:CROSS SECTION (CURTAIN/VERTICAL)
LOCALN	.ft	:LOCAL NORTH
LOCALE	.ft	:LOCAL EAST

GOETZEL_31N-30C-M_PWP__REV-A.0_.1as

LAT .deg :LATITUDE
 LONG .deg :LONGITUDE
 DLS .deg/100ft :DOGLEG SEVERITY

~ASCII DATA

0.00	0.00	39.49	0.00	0.00	0.00	0.00	40.4607889	-104.8011869	0.00
20.00	0.00	39.49	20.00	0.00	0.00	0.00	40.4607889	-104.8011869	0.00
120.00	0.00	39.49	120.00	0.00	0.00	0.00	40.4607889	-104.8011869	0.00
220.00	0.00	39.49	220.00	0.00	0.00	0.00	40.4607889	-104.8011869	0.00
320.00	0.00	39.49	320.00	0.00	0.00	0.00	40.4607889	-104.8011869	0.00
420.00	0.00	39.49	420.00	0.00	0.00	0.00	40.4607889	-104.8011869	0.00
520.00	0.00	39.49	520.00	0.00	0.00	0.00	40.4607889	-104.8011869	0.00
620.00	0.00	39.49	620.00	0.00	0.00	0.00	40.4607889	-104.8011869	0.00
720.00	0.00	39.49	720.00	0.00	0.00	0.00	40.4607889	-104.8011869	0.00
820.00	0.00	39.49	820.00	0.00	0.00	0.00	40.4607889	-104.8011869	0.00
920.00	0.00	39.49	920.00	0.00	0.00	0.00	40.4607889	-104.8011869	0.00
1020.00	0.00	39.49	1020.00	0.00	0.00	0.00	40.4607889	-104.8011869	0.00
1120.00	0.00	39.49	1120.00	0.00	0.00	0.00	40.4607889	-104.8011869	0.00
1220.00	0.00	39.49	1220.00	0.00	0.00	0.00	40.4607889	-104.8011869	0.00
1320.00	0.00	39.49	1320.00	0.00	0.00	0.00	40.4607889	-104.8011869	0.00
1420.00	0.00	39.49	1420.00	0.00	0.00	0.00	40.4607889	-104.8011869	0.00
1520.00	0.00	39.49	1520.00	0.00	0.00	0.00	40.4607889	-104.8011869	0.00
1620.00	0.00	39.49	1620.00	0.00	0.00	0.00	40.4607889	-104.8011869	0.00
1720.00	0.00	39.49	1720.00	0.00	0.00	0.00	40.4607889	-104.8011869	0.00
1820.00	0.00	39.49	1820.00	0.00	0.00	0.00	40.4607889	-104.8011869	0.00
1900.00	0.00	39.49	1900.00	0.00	0.00	0.00	40.4607889	-104.8011869	0.00
1920.00	0.40	39.49	1920.00	-0.04	0.05	0.04	40.4607890	-104.8011868	2.00
2020.00	2.40	39.49	2019.96	-1.58	1.94	1.60	40.4607942	-104.8011812	2.00
2120.00	4.40	39.49	2119.78	-5.29	6.52	5.37	40.4608068	-104.8011677	2.00
2220.00	6.40	39.49	2219.33	-11.20	13.78	11.35	40.4608267	-104.8011461	2.00
2258.14	7.16	39.49	2257.20	-14.02	17.25	14.22	40.4608362	-104.8011359	2.00
2320.00	7.16	39.49	2318.59	-18.86	23.21	19.12	40.4608526	-104.8011182	0.00
2420.00	7.16	39.49	2417.80	-26.68	32.83	27.05	40.4608790	-104.8010897	0.00
2520.00	7.16	39.49	2517.02	-34.50	42.45	34.98	40.4609054	-104.8010612	0.00
2620.00	7.16	39.49	2616.24	-42.31	52.08	42.91	40.4609318	-104.8010327	0.00
2720.00	7.16	39.49	2715.46	-50.13	61.70	50.84	40.4609582	-104.8010043	0.00
2820.00	7.16	39.49	2814.68	-57.95	71.32	58.77	40.4609847	-104.8009758	0.00
2920.00	7.16	39.49	2913.90	-65.77	80.95	66.70	40.4610111	-104.8009473	0.00
3020.00	7.16	39.49	3013.12	-73.59	90.57	74.62	40.4610375	-104.8009188	0.00
3120.00	7.16	39.49	3112.34	-81.41	100.19	82.55	40.4610639	-104.8008903	0.00
3220.00	7.16	39.49	3211.56	-89.23	109.81	90.48	40.4610903	-104.8008618	0.00
3320.00	7.16	39.49	3310.78	-97.05	119.44	98.41	40.4611167	-104.8008333	0.00
3420.00	7.16	39.49	3410.00	-104.87	129.06	106.34	40.4611431	-104.8008048	0.00
3520.00	7.16	39.49	3509.22	-112.69	138.68	114.27	40.4611696	-104.8007763	0.00
3620.00	7.16	39.49	3608.44	-120.51	148.31	122.20	40.4611960	-104.8007478	0.00
3720.00	7.16	39.49	3707.66	-128.32	157.93	130.13	40.4612224	-104.8007193	0.00
3820.00	7.16	39.49	3806.88	-136.14	167.55	138.06	40.4612488	-104.8006908	0.00
3920.00	7.16	39.49	3906.10	-143.96	177.18	145.98	40.4612752	-104.8006623	0.00

GOETZEL_31N-30C-M_PWP__REV-A.0_1as									
4020.00	7.16	39.49	4005.32	-151.78	186.80	153.91	40.4613016	-104.8006338	0.00
4120.00	7.16	39.49	4104.54	-159.60	196.42	161.84	40.4613280	-104.8006053	0.00
4220.00	7.16	39.49	4203.76	-167.42	206.04	169.77	40.4613545	-104.8005768	0.00
4320.00	7.16	39.49	4302.98	-175.24	215.67	177.70	40.4613809	-104.8005484	0.00
4420.00	7.16	39.49	4402.20	-183.06	225.29	185.63	40.4614073	-104.8005199	0.00
4520.00	7.16	39.49	4501.42	-190.88	234.91	193.56	40.4614337	-104.8004914	0.00
4620.00	7.16	39.49	4600.64	-198.70	244.54	201.49	40.4614601	-104.8004629	0.00
4720.00	7.16	39.49	4699.86	-206.52	254.16	209.42	40.4614865	-104.8004344	0.00
4820.00	7.16	39.49	4799.08	-214.33	263.78	217.35	40.4615129	-104.8004059	0.00
4920.00	7.16	39.49	4898.29	-222.15	273.41	225.27	40.4615394	-104.8003774	0.00
5020.00	7.16	39.49	4997.51	-229.97	283.03	233.20	40.4615658	-104.8003489	0.00
5120.00	7.16	39.49	5096.73	-237.79	292.65	241.13	40.4615922	-104.8003204	0.00
5220.00	7.16	39.49	5195.95	-245.61	302.28	249.06	40.4616186	-104.8002919	0.00
5320.00	7.16	39.49	5295.17	-253.43	311.90	256.99	40.4616450	-104.8002634	0.00
5420.00	7.16	39.49	5394.39	-261.25	321.52	264.92	40.4616714	-104.8002349	0.00
5520.00	7.16	39.49	5493.61	-269.07	331.14	272.85	40.4616978	-104.8002064	0.00
5620.00	7.16	39.49	5592.83	-276.89	340.77	280.78	40.4617242	-104.8001779	0.00
5720.00	7.16	39.49	5692.05	-284.71	350.39	288.71	40.4617507	-104.8001494	0.00
5820.00	7.16	39.49	5791.27	-292.53	360.01	296.63	40.4617771	-104.8001209	0.00
5920.00	7.16	39.49	5890.49	-300.34	369.64	304.56	40.4618035	-104.8000924	0.00
6020.00	7.16	39.49	5989.71	-308.16	379.26	312.49	40.4618299	-104.8000639	0.00
6120.00	7.16	39.49	6088.93	-315.98	388.88	320.42	40.4618563	-104.8000355	0.00
6220.00	7.16	39.49	6188.15	-323.80	398.51	328.35	40.4618827	-104.8000070	0.00
6320.00	7.16	39.49	6287.37	-331.62	408.13	336.28	40.4619091	-104.7999785	0.00
6419.56	7.16	39.49	6386.15	-339.41	417.71	344.17	40.4619354	-104.7999501	0.00
6420.00	7.14	39.25	6386.59	-339.44	417.75	344.21	40.4619356	-104.7999500	9.00
6520.00	6.81	318.76	6486.05	-339.36	427.04	344.23	40.4619610	-104.7999499	9.00
6620.00	14.26	288.93	6584.36	-323.67	435.51	328.64	40.4619843	-104.8000059	9.00
6720.00	22.84	280.19	6679.10	-292.77	442.95	297.82	40.4620047	-104.8001167	9.00
6820.00	31.65	276.10	6767.92	-247.42	449.18	252.54	40.4620218	-104.8002794	9.00
6920.00	40.54	273.66	6848.65	-188.73	454.05	193.90	40.4620352	-104.8004901	9.00
7020.00	49.46	271.97	6919.29	-118.14	457.44	123.35	40.4620445	-104.8007437	9.00
7120.00	58.40	270.69	6978.12	-37.41	459.26	42.63	40.4620495	-104.8010338	9.00
7220.00	67.35	269.63	7023.67	51.50	459.47	-46.28	40.4620501	-104.8013533	9.00
7320.00	76.31	268.70	7054.82	146.38	458.07	-141.19	40.4620462	-104.8016943	9.00
7420.00	85.27	267.84	7070.82	244.90	455.08	-239.75	40.4620380	-104.8020485	9.00
7472.83	90.00	267.40	7073.00	297.60	452.89	-292.47	40.4620320	-104.8022380	9.00
7520.00	90.00	267.40	7073.00	344.69	450.74	-339.59	40.4620261	-104.8024073	0.00
7620.00	90.00	267.40	7073.00	444.53	446.20	-439.49	40.4620136	-104.8027663	0.00
7720.00	90.00	267.40	7073.00	544.37	441.66	-539.39	40.4620012	-104.8031253	0.00
7820.00	90.00	267.40	7073.00	644.21	437.12	-639.28	40.4619887	-104.8034843	0.00
7920.00	90.00	267.40	7073.00	744.05	432.58	-739.18	40.4619762	-104.8038433	0.00
8020.00	90.00	267.40	7073.00	843.89	428.04	-839.08	40.4619638	-104.8042023	0.00
8120.00	90.00	267.40	7073.00	943.73	423.50	-938.98	40.4619513	-104.8045613	0.00
8220.00	90.00	267.40	7073.00	1043.56	418.96	-1038.87	40.4619388	-104.8049203	0.00
8320.00	90.00	267.40	7073.00	1143.40	414.41	-1138.77	40.4619263	-104.8052793	0.00
8420.00	90.00	267.40	7073.00	1243.24	409.87	-1238.67	40.4619139	-104.8056383	0.00
8520.00	90.00	267.40	7073.00	1343.08	405.33	-1338.56	40.4619014	-104.8059973	0.00

				GOETZEL_31N-30C-M_PWP__REV-A.0_.1as					
8620.00	90.00	267.40	7073.00	1442.92	400.79	-1438.46	40.4618889	-104.8063563	0.00
8720.00	90.00	267.40	7073.00	1542.76	396.25	-1538.36	40.4618764	-104.8067153	0.00
8820.00	90.00	267.40	7073.00	1642.60	391.71	-1638.25	40.4618639	-104.8070743	0.00
8920.00	90.00	267.40	7073.00	1742.44	387.17	-1738.15	40.4618514	-104.8074333	0.00
9020.00	90.00	267.40	7073.00	1842.27	382.62	-1838.05	40.4618390	-104.8077923	0.00
9120.00	90.00	267.40	7073.00	1942.11	378.08	-1937.94	40.4618265	-104.8081513	0.00
9220.00	90.00	267.40	7073.00	2041.95	373.54	-2037.84	40.4618140	-104.8085103	0.00
9320.00	90.00	267.40	7073.00	2141.79	369.00	-2137.74	40.4618015	-104.8088693	0.00
9420.00	90.00	267.40	7073.00	2241.63	364.46	-2237.63	40.4617890	-104.8092283	0.00
9520.00	90.00	267.40	7073.00	2341.47	359.92	-2337.53	40.4617765	-104.8095873	0.00
9620.00	90.00	267.40	7073.00	2441.31	355.38	-2437.43	40.4617640	-104.8099462	0.00
9720.00	90.00	267.40	7073.00	2541.15	350.83	-2537.32	40.4617515	-104.8103052	0.00
9820.00	90.00	267.40	7073.00	2640.99	346.29	-2637.22	40.4617390	-104.8106642	0.00
9920.00	90.00	267.40	7073.00	2740.82	341.75	-2737.12	40.4617265	-104.8110232	0.00
10020.00	90.00	267.40	7073.00	2840.66	337.21	-2837.01	40.4617140	-104.8113822	0.00
10120.00	90.00	267.40	7073.00	2940.50	332.67	-2936.91	40.4617015	-104.8117412	0.00
10220.00	90.00	267.40	7073.00	3040.34	328.13	-3036.81	40.4616890	-104.8121002	0.00
10320.00	90.00	267.40	7073.00	3140.18	323.59	-3136.71	40.4616765	-104.8124592	0.00
10420.00	90.00	267.40	7073.00	3240.02	319.04	-3236.60	40.4616640	-104.8128182	0.00
10520.00	90.00	267.40	7073.00	3339.86	314.50	-3336.50	40.4616515	-104.8131772	0.00
10620.00	90.00	267.40	7073.00	3439.70	309.96	-3436.40	40.4616390	-104.8135362	0.00
10720.00	90.00	267.40	7073.00	3539.53	305.42	-3536.29	40.4616265	-104.8138952	0.00
10820.00	90.00	267.40	7073.00	3639.37	300.88	-3636.19	40.4616140	-104.8142542	0.00
10920.00	90.00	267.40	7073.00	3739.21	296.34	-3736.09	40.4616015	-104.8146132	0.00
11020.00	90.00	267.40	7073.00	3839.05	291.80	-3835.98	40.4615890	-104.8149722	0.00
11120.00	90.00	267.40	7073.00	3938.89	287.26	-3935.88	40.4615765	-104.8153311	0.00
11220.00	90.00	267.40	7073.00	4038.73	282.71	-4035.78	40.4615640	-104.8156901	0.00
11320.00	90.00	267.40	7073.00	4138.57	278.17	-4135.67	40.4615515	-104.8160491	0.00
11420.00	90.00	267.40	7073.00	4238.41	273.63	-4235.57	40.4615390	-104.8164081	0.00
11520.00	90.00	267.40	7073.00	4338.24	269.09	-4335.47	40.4615265	-104.8167671	0.00
11620.00	90.00	267.40	7073.00	4438.08	264.55	-4435.36	40.4615139	-104.8171261	0.00
11720.00	90.00	267.40	7073.00	4537.92	260.01	-4535.26	40.4615014	-104.8174851	0.00
11820.00	90.00	267.40	7073.00	4637.76	255.47	-4635.16	40.4614889	-104.8178441	0.00
11920.00	90.00	267.40	7073.00	4737.60	250.92	-4735.05	40.4614764	-104.8182031	0.00
12020.00	90.00	267.40	7073.00	4837.44	246.38	-4834.95	40.4614639	-104.8185621	0.00
12120.00	90.00	267.40	7073.00	4937.28	241.84	-4934.85	40.4614514	-104.8189211	0.00
12220.00	90.00	267.40	7073.00	5037.12	237.30	-5034.74	40.4614388	-104.8192801	0.00
12320.00	90.00	267.40	7073.00	5136.95	232.76	-5134.64	40.4614263	-104.8196390	0.00
12420.00	90.00	267.40	7073.00	5236.79	228.22	-5234.54	40.4614138	-104.8199980	0.00
12520.00	90.00	267.40	7073.00	5336.63	223.68	-5334.44	40.4614013	-104.8203570	0.00
12620.00	90.00	267.40	7073.00	5436.47	219.13	-5434.33	40.4613887	-104.8207160	0.00
12720.00	90.00	267.40	7073.00	5536.31	214.59	-5534.23	40.4613762	-104.8210750	0.00
12820.00	90.00	267.40	7073.00	5636.15	210.05	-5634.13	40.4613637	-104.8214340	0.00
12920.00	90.00	267.40	7073.00	5735.99	205.51	-5734.02	40.4613512	-104.8217930	0.00
13020.00	90.00	267.40	7073.00	5835.83	200.97	-5833.92	40.4613386	-104.8221520	0.00
13120.00	90.00	267.40	7073.00	5935.66	196.43	-5933.82	40.4613261	-104.8225110	0.00
13220.00	90.00	267.40	7073.00	6035.50	191.89	-6033.71	40.4613136	-104.8228700	0.00
13320.00	90.00	267.40	7073.00	6135.34	187.35	-6133.61	40.4613010	-104.8232289	0.00

				GOETZEL_31N-30C-M_PWP__REV-A.0_1as						
13420.00	90.00	267.40	7073.00	6235.18	182.80	-6233.51	40.4612885	-104.8235879	0.00	
13520.00	90.00	267.40	7073.00	6335.02	178.26	-6333.40	40.4612760	-104.8239469	0.00	
13620.00	90.00	267.40	7073.00	6434.86	173.72	-6433.30	40.4612634	-104.8243059	0.00	
13720.00	90.00	267.40	7073.00	6534.70	169.18	-6533.20	40.4612509	-104.8246649	0.00	
13820.00	90.00	267.40	7073.00	6634.54	164.64	-6633.09	40.4612384	-104.8250239	0.00	
13920.00	90.00	267.40	7073.00	6734.38	160.10	-6732.99	40.4612258	-104.8253829	0.00	
14020.00	90.00	267.40	7073.00	6834.21	155.56	-6832.89	40.4612133	-104.8257419	0.00	
14120.00	90.00	267.40	7073.00	6934.05	151.01	-6932.78	40.4612007	-104.8261009	0.00	
14220.00	90.00	267.40	7073.00	7033.89	146.47	-7032.68	40.4611882	-104.8264598	0.00	
14320.00	90.00	267.40	7073.00	7133.73	141.93	-7132.58	40.4611756	-104.8268188	0.00	
14420.00	90.00	267.40	7073.00	7233.57	137.39	-7232.48	40.4611631	-104.8271778	0.00	
14520.00	90.00	267.40	7073.00	7333.41	132.85	-7332.37	40.4611506	-104.8275368	0.00	
14620.00	90.00	267.40	7073.00	7433.25	128.31	-7432.27	40.4611380	-104.8278958	0.00	
14720.00	90.00	267.40	7073.00	7533.09	123.77	-7532.17	40.4611255	-104.8282548	0.00	
14820.00	90.00	267.40	7073.00	7632.92	119.22	-7632.06	40.4611129	-104.8286138	0.00	
14920.00	90.00	267.40	7073.00	7732.76	114.68	-7731.96	40.4611004	-104.8289728	0.00	
15020.00	90.00	267.40	7073.00	7832.60	110.14	-7831.86	40.4610878	-104.8293317	0.00	
15120.00	90.00	267.40	7073.00	7932.44	105.60	-7931.75	40.4610752	-104.8296907	0.00	
15220.00	90.00	267.40	7073.00	8032.28	101.06	-8031.65	40.4610627	-104.8300497	0.00	
15320.00	90.00	267.40	7073.00	8132.12	96.52	-8131.55	40.4610501	-104.8304087	0.00	
15392.79	90.00	267.40	7073.00	8204.79	93.21	-8204.26	40.4610410	-104.8306700	0.00	



Planned Wellpath Report

GOETZEL 31N-30C-M PWP (REV-A.0)

Page 1 of 7



REFERENCE WELLPATH IDENTIFICATION

Operator	SYNERGY RESOURCES CORPORATION	Slot	SLOT#08 GOETZEL 31N-30C-M (2013'FNL & 2446'FEL, SEC.29)
Area	COLORADO	Well	GOETZEL 31N-30C-M
Field	WELD COUNTY (NAD83,TRUE NORTH)	Wellbore	GOETZEL 31N-30C-M PWB
Facility	SEC.29-T06N-R66W		

REPORT SETUP INFORMATION

Projection System	NAD83 / Lambert Colorado SP, Northern Zone (501), US feet	Software System	WellArchitect® 5.0
North Reference	True	User	Ingmjmr
Scale	0.999964	Report Generated	11/15/2016 at 10:14:55 AM
Convergence at slot	0.46° East	Database/Source file	WA_DEN_Denver_Defn/GOETZEL_31N-30C-M_PWP_REV-A.0_.xml

WELLPATH LOCATION

	Local coordinates		Grid coordinates		Geographic coordinates	
	North[ft]	East[ft]	Easting[US ft]	Northing[US ft]	Latitude	Longitude
Slot Location	-200.05	-1.10	3194450.14	1411471.94	40°27'38.840"N	104°48'04.273"W
Facility Reference Pt			3194449.66	1411671.99	40°27'40.817"N	104°48'04.259"W
Field Reference Pt			3171284.48	1426358.81	40°30'07.643"N	104°53'02.634"W

WELLPATH DATUM

Calculation method	Minimum curvature	PRECISION 462 (20'KB) (RKB) to Facility Vertical Datum	4748.00ft
Horizontal Reference Pt	Slot	PRECISION 462 (20'KB) (RKB) to Mean Sea Level	4748.00ft
Vertical Reference Pt	PRECISION 462 (20'KB) (RKB)	PRECISION 462 (20'KB) (RKB) to Mud Line at Slot (SLOT#08 GOETZEL 31N-30C-M (2013'FNL & 2446'FEL, SEC.29))	4748.00ft
MD Reference Pt	PRECISION 462 (20'KB) (RKB)	Section Origin	N 0.00, E 0.00 ft
Field Vertical Reference	Mean Sea Level	Section Azimuth	270.65°



Planned Wellpath Report

GOETZEL 31N-30C-M PWP (REV-A.0)

Page 2 of 7



REFERENCE WELLPATH IDENTIFICATION

Operator	SYNERGY RESOURCES CORPORATION	Slot	SLOT#08 GOETZEL 31N-30C-M (2013'FNL & 2446'FEL, SEC.29)
Area	COLORADO	Well	GOETZEL 31N-30C-M
Field	WELD COUNTY (NAD83,TRUE NORTH)	Wellbore	GOETZEL 31N-30C-M PWB
Facility	SEC.29-T06N-R66W		

WELLPATH DATA (160 stations) † = interpolated/extrapolated station

MD [ft]	Inclination [°]	Azimuth [°]	TVD [ft]	Vert Sect [ft]	North [ft]	East [ft]	DLS [°/100ft]	Comments
0.00†	0.000	39.487	0.00	0.00	0.00	0.00	0.00	
20.00	0.000	39.487	20.00	0.00	0.00	0.00	0.00	Tie On
120.00†	0.000	39.487	120.00	0.00	0.00	0.00	0.00	
220.00†	0.000	39.487	220.00	0.00	0.00	0.00	0.00	
320.00†	0.000	39.487	320.00	0.00	0.00	0.00	0.00	
420.00†	0.000	39.487	420.00	0.00	0.00	0.00	0.00	
520.00†	0.000	39.487	520.00	0.00	0.00	0.00	0.00	
620.00†	0.000	39.487	620.00	0.00	0.00	0.00	0.00	
720.00†	0.000	39.487	720.00	0.00	0.00	0.00	0.00	
820.00†	0.000	39.487	820.00	0.00	0.00	0.00	0.00	
920.00†	0.000	39.487	920.00	0.00	0.00	0.00	0.00	
1020.00†	0.000	39.487	1020.00	0.00	0.00	0.00	0.00	
1120.00†	0.000	39.487	1120.00	0.00	0.00	0.00	0.00	
1220.00†	0.000	39.487	1220.00	0.00	0.00	0.00	0.00	
1320.00†	0.000	39.487	1320.00	0.00	0.00	0.00	0.00	
1420.00†	0.000	39.487	1420.00	0.00	0.00	0.00	0.00	
1520.00†	0.000	39.487	1520.00	0.00	0.00	0.00	0.00	
1620.00†	0.000	39.487	1620.00	0.00	0.00	0.00	0.00	
1720.00†	0.000	39.487	1720.00	0.00	0.00	0.00	0.00	
1820.00†	0.000	39.487	1820.00	0.00	0.00	0.00	0.00	
1900.00	0.000	39.487	1900.00	0.00	0.00	0.00	0.00	End of Tangent
1920.00†	0.400	39.487	1920.00	-0.04	0.05	0.04	2.00	
2020.00†	2.400	39.487	2019.96	-1.58	1.94	1.60	2.00	
2120.00†	4.400	39.487	2119.78	-5.29	6.52	5.37	2.00	
2220.00†	6.400	39.487	2219.33	-11.20	13.78	11.35	2.00	
2258.14	7.163	39.487	2257.20	-14.02	17.25	14.22	2.00	End of Build
2320.00†	7.163	39.487	2318.59	-18.86	23.21	19.12	0.00	
2420.00†	7.163	39.487	2417.80	-26.68	32.83	27.05	0.00	
2520.00†	7.163	39.487	2517.02	-34.50	42.45	34.98	0.00	
2620.00†	7.163	39.487	2616.24	-42.31	52.08	42.91	0.00	
2720.00†	7.163	39.487	2715.46	-50.13	61.70	50.84	0.00	
2820.00†	7.163	39.487	2814.68	-57.95	71.32	58.77	0.00	
2920.00†	7.163	39.487	2913.90	-65.77	80.95	66.70	0.00	
3020.00†	7.163	39.487	3013.12	-73.59	90.57	74.62	0.00	
3120.00†	7.163	39.487	3112.34	-81.41	100.19	82.55	0.00	
3220.00†	7.163	39.487	3211.56	-89.23	109.81	90.48	0.00	
3320.00†	7.163	39.487	3310.78	-97.05	119.44	98.41	0.00	
3420.00†	7.163	39.487	3410.00	-104.87	129.06	106.34	0.00	
3520.00†	7.163	39.487	3509.22	-112.69	138.68	114.27	0.00	
3620.00†	7.163	39.487	3608.44	-120.51	148.31	122.20	0.00	
3720.00†	7.163	39.487	3707.66	-128.32	157.93	130.13	0.00	
3820.00†	7.163	39.487	3806.88	-136.14	167.55	138.06	0.00	
3920.00†	7.163	39.487	3906.10	-143.96	177.18	145.98	0.00	
4020.00†	7.163	39.487	4005.32	-151.78	186.80	153.91	0.00	
4120.00†	7.163	39.487	4104.54	-159.60	196.42	161.84	0.00	



Planned Wellpath Report

GOETZEL 31N-30C-M PWP (REV-A.0)

Page 3 of 7



REFERENCE WELLPATH IDENTIFICATION

Operator	SYNERGY RESOURCES CORPORATION	Slot	SLOT#08 GOETZEL 31N-30C-M (2013'FNL & 2446'FEL, SEC.29)
Area	COLORADO	Well	GOETZEL 31N-30C-M
Field	WELD COUNTY (NAD83,TRUE NORTH)	Wellbore	GOETZEL 31N-30C-M PWB
Facility	SEC.29-T06N-R66W		

WELLPATH DATA (160 stations) † = interpolated/extrapolated station

MD [ft]	Inclination [°]	Azimuth [°]	TVD [ft]	Vert Sect [ft]	North [ft]	East [ft]	DLS [°/100ft]	Comments
4220.00†	7.163	39.487	4203.76	-167.42	206.04	169.77	0.00	
4320.00†	7.163	39.487	4302.98	-175.24	215.67	177.70	0.00	
4420.00†	7.163	39.487	4402.20	-183.06	225.29	185.63	0.00	
4520.00†	7.163	39.487	4501.42	-190.88	234.91	193.56	0.00	
4620.00†	7.163	39.487	4600.64	-198.70	244.54	201.49	0.00	
4720.00†	7.163	39.487	4699.86	-206.52	254.16	209.42	0.00	
4820.00†	7.163	39.487	4799.08	-214.33	263.78	217.35	0.00	
4920.00†	7.163	39.487	4898.29	-222.15	273.41	225.27	0.00	
5020.00†	7.163	39.487	4997.51	-229.97	283.03	233.20	0.00	
5120.00†	7.163	39.487	5096.73	-237.79	292.65	241.13	0.00	
5220.00†	7.163	39.487	5195.95	-245.61	302.28	249.06	0.00	
5320.00†	7.163	39.487	5295.17	-253.43	311.90	256.99	0.00	
5420.00†	7.163	39.487	5394.39	-261.25	321.52	264.92	0.00	
5520.00†	7.163	39.487	5493.61	-269.07	331.14	272.85	0.00	
5620.00†	7.163	39.487	5592.83	-276.89	340.77	280.78	0.00	
5720.00†	7.163	39.487	5692.05	-284.71	350.39	288.71	0.00	
5820.00†	7.163	39.487	5791.27	-292.53	360.01	296.63	0.00	
5920.00†	7.163	39.487	5890.49	-300.34	369.64	304.56	0.00	
6020.00†	7.163	39.487	5989.71	-308.16	379.26	312.49	0.00	
6120.00†	7.163	39.487	6088.93	-315.98	388.88	320.42	0.00	
6220.00†	7.163	39.487	6188.15	-323.80	398.51	328.35	0.00	
6320.00†	7.163	39.487	6287.37	-331.62	408.13	336.28	0.00	
6419.56	7.163	39.487	6386.15	-339.41	417.71	344.17	0.00	End of Tangent
6420.00†	7.136	39.250	6386.59	-339.44	417.75	344.21	9.00	
6520.00†	6.809	318.758	6486.05	-339.36	427.04	344.23	9.00	
6620.00†	14.259	288.926	6584.36	-323.67	435.51	328.64	9.00	
6720.00†	22.843	280.188	6679.10	-292.77	442.95	297.82	9.00	
6820.00†	31.651	276.099	6767.92	-247.42	449.18	252.54	9.00	
6920.00†	40.537	273.658	6848.65	-188.73	454.05	193.90	9.00	
7020.00†	49.458	271.972	6919.29	-118.14	457.44	123.35	9.00	
7120.00†	58.398	270.686	6978.12	-37.41	459.26	42.63	9.00	
7220.00†	67.349	269.627	7023.67	51.50	459.47	-46.28	9.00	
7320.00†	76.306	268.699	7054.82	146.38	458.07	-141.19	9.00	
7420.00†	85.266	267.840	7070.82	244.90	455.08	-239.75	9.00	
7472.83	90.000	267.397	7073.00†	297.60	452.89	-292.47	9.00	End of 3D Arc
7520.00†	90.000	267.397	7073.00	344.69	450.74	-339.59	0.00	
7620.00†	90.000	267.397	7073.00	444.53	446.20	-439.49	0.00	
7720.00†	90.000	267.397	7073.00	544.37	441.66	-539.39	0.00	
7820.00†	90.000	267.397	7073.00	644.21	437.12	-639.28	0.00	
7920.00†	90.000	267.397	7073.00	744.05	432.58	-739.18	0.00	
8020.00†	90.000	267.397	7073.00	843.89	428.04	-839.08	0.00	
8120.00†	90.000	267.397	7073.00	943.73	423.50	-938.98	0.00	
8220.00†	90.000	267.397	7073.00	1043.56	418.96	-1038.87	0.00	
8320.00†	90.000	267.397	7073.00	1143.40	414.41	-1138.77	0.00	
8420.00†	90.000	267.397	7073.00	1243.24	409.87	-1238.67	0.00	



Planned Wellpath Report

GOETZEL 31N-30C-M PWP (REV-A.0)

Page 4 of 7



REFERENCE WELLPATH IDENTIFICATION			
Operator	SYNERGY RESOURCES CORPORATION	Slot	SLOT#08 GOETZEL 31N-30C-M (2013'FNL & 2446'FEL, SEC.29)
Area	COLORADO	Well	GOETZEL 31N-30C-M
Field	WELD COUNTY (NAD83,TRUE NORTH)	Wellbore	GOETZEL 31N-30C-M PWB
Facility	SEC.29-T06N-R66W		

WELLPATH DATA (160 stations) † = interpolated/extrapolated station								
MD [ft]	Inclination [°]	Azimuth [°]	TVD [ft]	Vert Sect [ft]	North [ft]	East [ft]	DLS [°/100ft]	Comments
8520.00†	90.000	267.397	7073.00	1343.08	405.33	-1338.56	0.00	
8620.00†	90.000	267.397	7073.00	1442.92	400.79	-1438.46	0.00	
8720.00†	90.000	267.397	7073.00	1542.76	396.25	-1538.36	0.00	
8820.00†	90.000	267.397	7073.00	1642.60	391.71	-1638.25	0.00	
8920.00†	90.000	267.397	7073.00	1742.44	387.17	-1738.15	0.00	
9020.00†	90.000	267.397	7073.00	1842.27	382.62	-1838.05	0.00	
9120.00†	90.000	267.397	7073.00	1942.11	378.08	-1937.94	0.00	
9220.00†	90.000	267.397	7073.00	2041.95	373.54	-2037.84	0.00	
9320.00†	90.000	267.397	7073.00	2141.79	369.00	-2137.74	0.00	
9420.00†	90.000	267.397	7073.00	2241.63	364.46	-2237.63	0.00	
9520.00†	90.000	267.397	7073.00	2341.47	359.92	-2337.53	0.00	
9620.00†	90.000	267.397	7073.00	2441.31	355.38	-2437.43	0.00	
9720.00†	90.000	267.397	7073.00	2541.15	350.83	-2537.32	0.00	
9820.00†	90.000	267.397	7073.00	2640.99	346.29	-2637.22	0.00	
9920.00†	90.000	267.397	7073.00	2740.82	341.75	-2737.12	0.00	
10020.00†	90.000	267.397	7073.00	2840.66	337.21	-2837.01	0.00	
10120.00†	90.000	267.397	7073.00	2940.50	332.67	-2936.91	0.00	
10220.00†	90.000	267.397	7073.00	3040.34	328.13	-3036.81	0.00	
10320.00†	90.000	267.397	7073.00	3140.18	323.59	-3136.71	0.00	
10420.00†	90.000	267.397	7073.00	3240.02	319.04	-3236.60	0.00	
10520.00†	90.000	267.397	7073.00	3339.86	314.50	-3336.50	0.00	
10620.00†	90.000	267.397	7073.00	3439.70	309.96	-3436.40	0.00	
10720.00†	90.000	267.397	7073.00	3539.53	305.42	-3536.29	0.00	
10820.00†	90.000	267.397	7073.00	3639.37	300.88	-3636.19	0.00	
10920.00†	90.000	267.397	7073.00	3739.21	296.34	-3736.09	0.00	
11020.00†	90.000	267.397	7073.00	3839.05	291.80	-3835.98	0.00	
11120.00†	90.000	267.397	7073.00	3938.89	287.26	-3935.88	0.00	
11220.00†	90.000	267.397	7073.00	4038.73	282.71	-4035.78	0.00	
11320.00†	90.000	267.397	7073.00	4138.57	278.17	-4135.67	0.00	
11420.00†	90.000	267.397	7073.00	4238.41	273.63	-4235.57	0.00	
11520.00†	90.000	267.397	7073.00	4338.24	269.09	-4335.47	0.00	
11620.00†	90.000	267.397	7073.00	4438.08	264.55	-4435.36	0.00	
11720.00†	90.000	267.397	7073.00	4537.92	260.01	-4535.26	0.00	
11820.00†	90.000	267.397	7073.00	4637.76	255.47	-4635.16	0.00	
11920.00†	90.000	267.397	7073.00	4737.60	250.92	-4735.05	0.00	
12020.00†	90.000	267.397	7073.00	4837.44	246.38	-4834.95	0.00	
12120.00†	90.000	267.397	7073.00	4937.28	241.84	-4934.85	0.00	
12220.00†	90.000	267.397	7073.00	5037.12	237.30	-5034.74	0.00	
12320.00†	90.000	267.397	7073.00	5136.95	232.76	-5134.64	0.00	
12420.00†	90.000	267.397	7073.00	5236.79	228.22	-5234.54	0.00	
12520.00†	90.000	267.397	7073.00	5336.63	223.68	-5334.44	0.00	
12620.00†	90.000	267.397	7073.00	5436.47	219.13	-5434.33	0.00	
12720.00†	90.000	267.397	7073.00	5536.31	214.59	-5534.23	0.00	
12820.00†	90.000	267.397	7073.00	5636.15	210.05	-5634.13	0.00	
12920.00†	90.000	267.397	7073.00	5735.99	205.51	-5734.02	0.00	



Planned Wellpath Report

GOETZEL 31N-30C-M PWP (REV-A.0)

Page 5 of 7



REFERENCE WELLPATH IDENTIFICATION

Operator	SYNERGY RESOURCES CORPORATION	Slot	SLOT#08 GOETZEL 31N-30C-M (2013'FNL & 2446'FEL, SEC.29)
Area	COLORADO	Well	GOETZEL 31N-30C-M
Field	WELD COUNTY (NAD83,TRUE NORTH)	Wellbore	GOETZEL 31N-30C-M PWB
Facility	SEC.29-T06N-R66W		

WELLPATH DATA (160 stations) † = interpolated/extrapolated station

MD [ft]	Inclination [°]	Azimuth [°]	TVD [ft]	Vert Sect [ft]	North [ft]	East [ft]	DLS [°/100ft]	Comments
13020.00†	90.000	267.397	7073.00	5835.83	200.97	-5833.92	0.00	
13120.00†	90.000	267.397	7073.00	5935.66	196.43	-5933.82	0.00	
13220.00†	90.000	267.397	7073.00	6035.50	191.89	-6033.71	0.00	
13320.00†	90.000	267.397	7073.00	6135.34	187.35	-6133.61	0.00	
13420.00†	90.000	267.397	7073.00	6235.18	182.80	-6233.51	0.00	
13520.00†	90.000	267.397	7073.00	6335.02	178.26	-6333.40	0.00	
13620.00†	90.000	267.397	7073.00	6434.86	173.72	-6433.30	0.00	
13720.00†	90.000	267.397	7073.00	6534.70	169.18	-6533.20	0.00	
13820.00†	90.000	267.397	7073.00	6634.54	164.64	-6633.09	0.00	
13920.00†	90.000	267.397	7073.00	6734.38	160.10	-6732.99	0.00	
14020.00†	90.000	267.397	7073.00	6834.21	155.56	-6832.89	0.00	
14120.00†	90.000	267.397	7073.00	6934.05	151.01	-6932.78	0.00	
14220.00†	90.000	267.397	7073.00	7033.89	146.47	-7032.68	0.00	
14320.00†	90.000	267.397	7073.00	7133.73	141.93	-7132.58	0.00	
14420.00†	90.000	267.397	7073.00	7233.57	137.39	-7232.48	0.00	
14520.00†	90.000	267.397	7073.00	7333.41	132.85	-7332.37	0.00	
14620.00†	90.000	267.397	7073.00	7433.25	128.31	-7432.27	0.00	
14720.00†	90.000	267.397	7073.00	7533.09	123.77	-7532.17	0.00	
14820.00†	90.000	267.397	7073.00	7632.92	119.22	-7632.06	0.00	
14920.00†	90.000	267.397	7073.00	7732.76	114.68	-7731.96	0.00	
15020.00†	90.000	267.397	7073.00	7832.60	110.14	-7831.86	0.00	
15120.00†	90.000	267.397	7073.00	7932.44	105.60	-7931.75	0.00	
15220.00†	90.000	267.397	7073.00	8032.28	101.06	-8031.65	0.00	
15320.00†	90.000	267.397	7073.00	8132.12	96.52	-8131.55	0.00	
15392.79	90.000	267.397	7073.00 ²	8204.79	93.21	-8204.26	0.00	End of Tangent

HOLE & CASING SECTIONS

- Ref Wellbore: GOETZEL 31N-30C-M PWB Ref Wellpath: GOETZEL 31N-30C-M PWP (REV-A.0)

String/Diameter	Start MD [ft]	End MD [ft]	Interval [ft]	Start TVD [ft]	End TVD [ft]	Start N/S [ft]	Start E/W [ft]	End N/S [ft]	End E/W [ft]
13.5in Open Hole	20.00	1700.00	1680.00	20.00	1700.00	0.00	0.00	0.00	0.00
9.625in Casing Surface	20.00	1700.00	1680.00	20.00	1700.00	0.00	0.00	0.00	0.00
8.5in Open Hole	1700.00	15392.79	13692.79	1700.00	N/A	0.00	0.00	N/A	N/A



Planned Wellpath Report

GOETZEL 31N-30C-M PWP (REV-A.0)

Page 6 of 7



REFERENCE WELLPATH IDENTIFICATION

Operator	SYNERGY RESOURCES CORPORATION	Slot	SLOT#08 GOETZEL 31N-30C-M (2013'FNL & 2446'FEL, SEC.29)
Area	COLORADO	Well	GOETZEL 31N-30C-M
Field	WELD COUNTY (NAD83,TRUE NORTH)	Wellbore	GOETZEL 31N-30C-M PWB
Facility	SEC.29-T06N-R66W		

TARGETS

Name	MD [ft]	TVD [ft]	North [ft]	East [ft]	Grid East [US ft]	Grid North [US ft]	Latitude	Longitude	Shape
SEC.29-T06N-R66W NORTHERN		0.00	200.05	1.10	3194449.66	1411671.99	40°27'40.817"N	104°48'04.259"W	polygon
SEC.29-T06N-R66W SOUTHERN		0.00	200.05	1.10	3194449.66	1411671.99	40°27'40.817"N	104°48'04.259"W	polygon
SEC.30-T06N-R66W NORTHERN		0.00	200.05	1.10	3194449.66	1411671.99	40°27'40.817"N	104°48'04.259"W	polygon
SEC.30-T06N-R66W SOUTHERN		0.00	200.05	1.10	3194449.66	1411671.99	40°27'40.817"N	104°48'04.259"W	polygon
2) GOETZEL 31N-30C-M BHL REV-1 (1625'FNL & 510'FWL, SEC.30)	15392.79	7073.00	93.21	-8204.26	3186245.72	1411500.50	40°27'39.748"N	104°49'50.412"W	circle
1) GOETZEL 31N-30C-M TOP REV-1 (1554'FNL & 2582'FWL, SEC.29)	7472.83	7073.00	452.89	-292.47	3194154.12	1411922.49	40°27'43.315"N	104°48'08.057"W	circle

SURVEY PROGRAM -

Ref Wellbore: GOETZEL 31N-30C-M PWB Ref Wellpath: GOETZEL 31N-30C-M PWP (REV-A.0)

Start MD [ft]	End MD [ft]	Positional Uncertainty Model	Log Name/Comment	Wellbore
20.00	1700.00	Custom BHI NaviTrak (Standard Rotating) (Rockies 0.03Gt model)		GOETZEL 31N-30C-M PWB
1700.00	15392.79	Custom BHI AutoTrak Curve (Short) (Rockies 0.03Gt model)		GOETZEL 31N-30C-M PWB



Planned Wellpath Report

GOETZEL 31N-30C-M PWP (REV-A.0)

Page 7 of 7



REFERENCE WELLPATH IDENTIFICATION

Operator	SYNERGY RESOURCES CORPORATION	Slot	SLOT#08 GOETZEL 31N-30C-M (2013'FNL & 2446'FEL, SEC.29)
Area	COLORADO	Well	GOETZEL 31N-30C-M
Field	WELD COUNTY (NAD83,TRUE NORTH)	Wellbore	GOETZEL 31N-30C-M PWB
Facility	SEC.29-T06N-R66W		

DESIGN COMMENTS

MD [ft]	Inclination [°]	Azimuth [°]	TVD [ft]	Comment
20.00	0.000	39.487	20.00	Tie On
1900.00	0.000	39.487	1900.00	End of Tangent
2258.14	7.163	39.487	2257.20	End of Build
6419.56	7.163	39.487	6386.15	End of Tangent
7472.83	90.000	267.397	7073.00	End of 3D Arc
15392.79	90.000	267.397	7073.00	End of Tangent