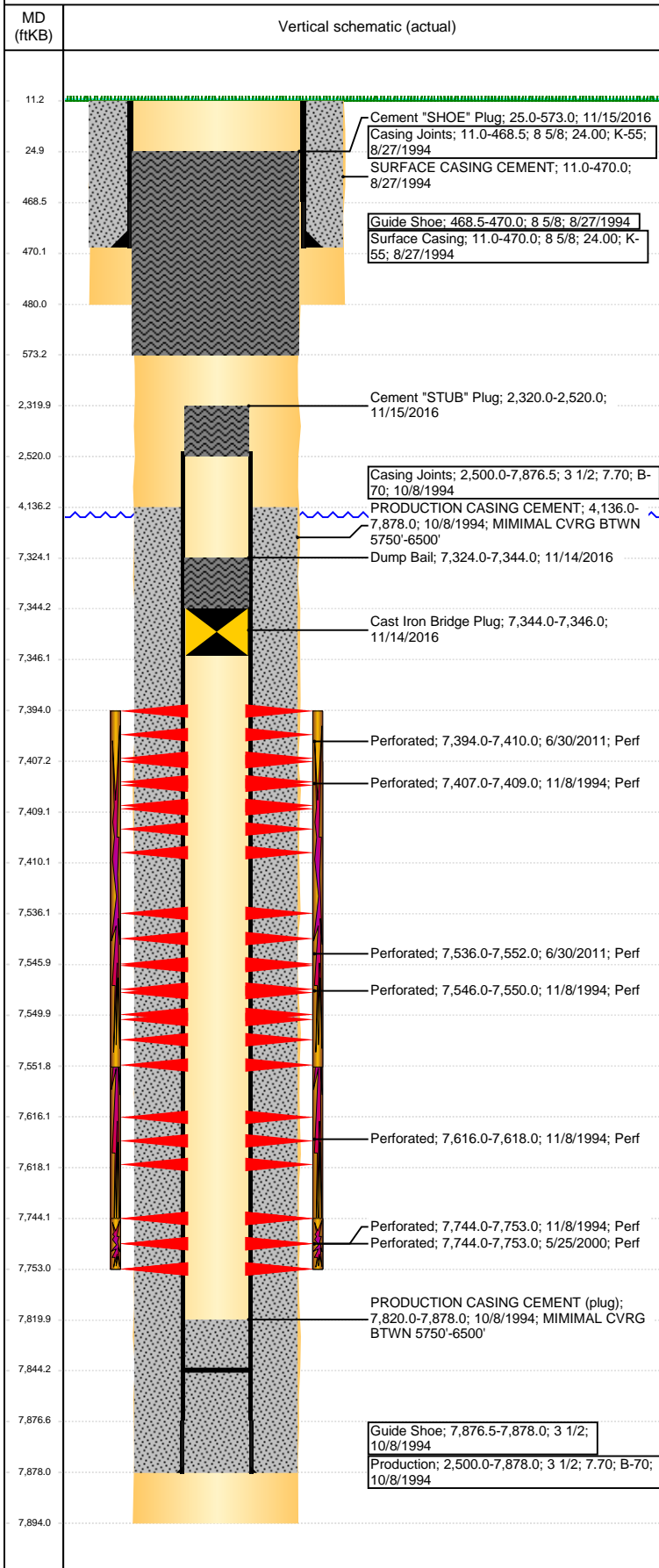


Well Name: UPV 27-01H6

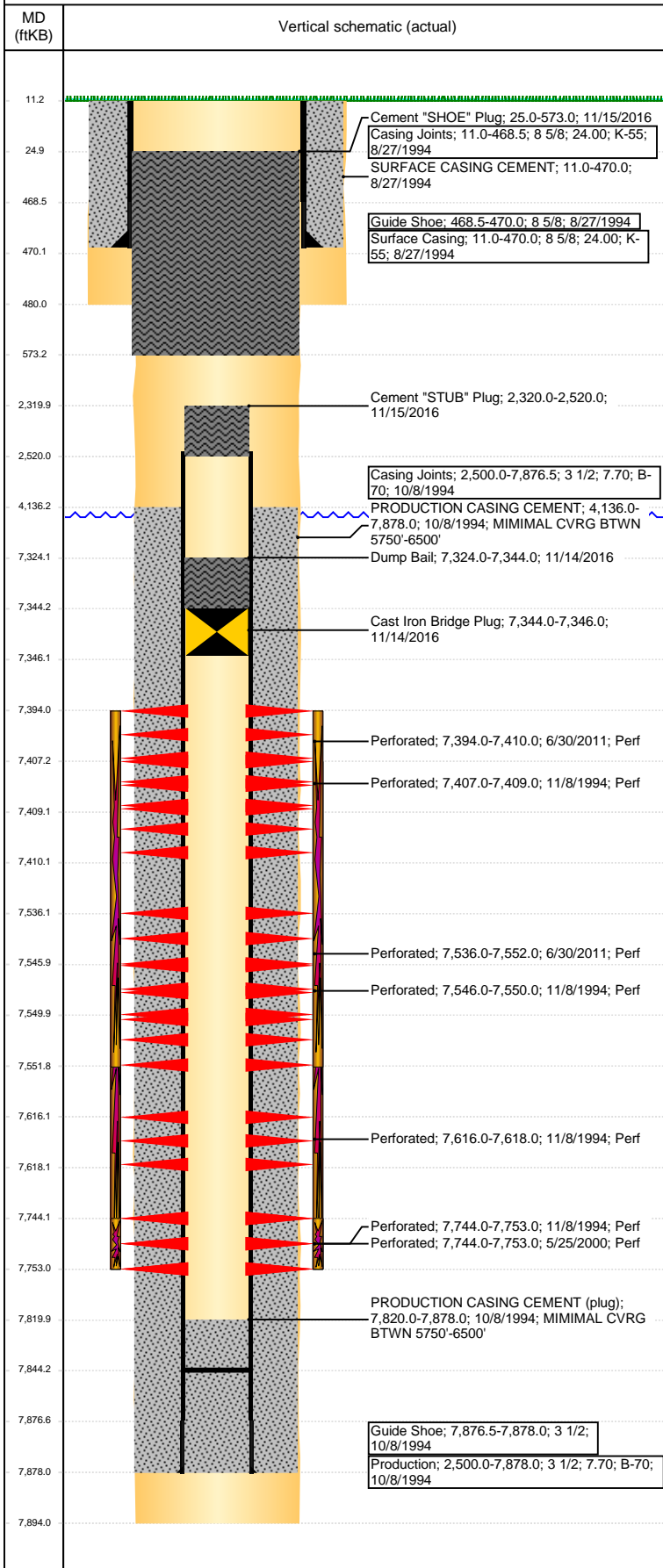
DEVIATED - ORIGINAL HOLE, 12/12/2016 2:24:51 PM



Well Header			
API 05-123-18476	Business Unit DJ BASIN	District 15	Well Config DEVIATED
Original KB Elevation (ft) 4,804	KB - GL / MSL (ftKB) 11.00	Spud Date 8/26/1994	P & A Date 11/16/2016
Comment DIRECTIONAL / THIS IS A RE-DRILL WELL			
Directions To Well 49TH ST & CEDARPARK, NE .3 TO BUSHMILLS, N .2, W .3, N 100', E INTO			
Congressional Location			
Quarter 3 NE	Quarter 4 SE	Section 27	Township 5
Twntshp N/S Dir N	Range 66	Range E/W Dir W	
Bottom Hole Location			
North-South Distance (ft) 466.0	From N or S Line FNL	East-West Distance (ft) 621.0	From E or W Line FEL
Plug Back Total Depths			
Date	Depth (ftKB)	Method	Com
10/8/1994	7,820.0	CASED HOLE LOG	DEPTH LOGGER ON CBL
7/27/2010	7,775.3	TAG	C/O LND TBG
6/29/2011	7,573.0	TAG	C/O FILL TO 7573'
7/27/2011	7,844.2	TAG	C/O SAND PLUG, TBG TALLY MEASUREMENT.
Wellbore Sections			
Section Des	Size (in)	Act Top, MD (ftKB)	Act Btm, MD (ftKB)
SURFACE	12 1/4	11	480
PRODUCTION	7 7/8	480	7,894
Zone Statuses			
Zone Name	Status Date	Status	Fluid Type
NIORARA-C...	3/9/2010	PR	Water
CODELL	11/20/1994	PR	Gas
CODELL	6/10/2000	PR	Gas
CODELL	5/29/2007	PR	Gas
CODELL	3/9/2010	PR	Water
CODELL	11/14/2016	P&A	Gas
NIORARA	11/20/1994	PR	Gas
NIORARA	3/9/2010	PR	Water
NIORARA	8/13/2011	PR	Gas
NIORARA	11/14/2016	P&A	Gas
Casing Strings			
Surface Casing, 470.0ftKB			
Casing Description	Run Date	OD (in)	Wt/Len (l...)
Surface Casing	8/27/1994	8 5/8	24.00
Production, 7,878.0ftKB			
Casing Description	Run Date	OD (in)	Wt/Len (l...)
Production	10/8/1994	3 1/2	7.70
Cement			
Description	Top Depth (ftKB)	Bottom Depth (ftKB)	
SURFACE CASING CEMENT	11.0	470.0	
PRODUCTION CASING CEMENT	4,136.0	7,878.0	
Dump Bail	7,324.0	7,344.0	
Cement "STUB" Plug	2,320.0	2,520.0	
Cement "SHOE" Plug	11.0	573.0	
Tubing Strings			
Tubing Description	Run Date	String...	ID (in)
Tubing - Production	4/26/2007	2 1/16	1.75
Tubing - Production	7/28/2010	2 1/16	1.75
Tubing - Production	7/28/2011	2 1/16	1.75
Other In Hole			
Run Date	Des	OD (in)	Top (ftKB)
11/14/2016	Cast Iron Bridge Plug	2.99	7,344.0

Well Name: UPV 27-01H6

DEVIATED - ORIGINAL HOLE, 12/12/2016 2:24:54 PM



Logs			
Date	Type	Top, MD (ftKB)	Btm, MD (ftKB)
10/7/1994	INDUCTION	470.0	7,892.0
11/8/1994	CEMENT BOND	4,050.0	7,815.0
5/9/2016	GYRO	0.0	4,650.0

Perforation Data					
Linked Zone	Bnch/St g	Entered Shot Total	Top (ftKB)	Btm (ftKB)	Date
NIOBRARA, ORIGINAL HOLE	A	64	7,394.00	7,410.00	6/30/2011
NIOBRARA, ORIGINAL HOLE	A	2	7,407.00	7,409.00	11/8/1994
NIOBRARA, ORIGINAL HOLE	B	64	7,536.00	7,552.00	6/30/2011
NIOBRARA, ORIGINAL HOLE	B	4	7,546.00	7,550.00	11/8/1994
NIOBRARA, ORIGINAL HOLE	C	2	7,616.00	7,618.00	11/8/1994
CODELL, ORIGINAL HOLE		36	7,744.00	7,753.00	5/25/2000
CODELL, ORIGINAL HOLE		9	7,744.00	7,753.00	11/8/1994

Stimulation Intervals			
Start Date 11/9/1994		Primary Job Type DRILLING/COMPLETION - ORIGINAL	
Technical Result		Tech Result Details	Tech Result Note
Comment C/N FRAC'D LIMITED ENTRY			
Start Date 6/2/2000		Primary Job Type RE-FRAC	
Technical Result		Tech Result Details	Tech Result Note
Comment			
Start Date 4/23/2007		Primary Job Type TRI-FRAC	
Technical Result		Tech Result Details	Tech Result Note
Comment			
Start Date 7/22/2011		Primary Job Type RE-FRAC	
Technical Result Success		Tech Result Details According to Plan	Tech Result Note
Comment			