

SYNERGY RESOURCES CORPORATION

Location: COLORADO Slot: SLOT#06 GOETZEL 31N-30B-M (1913°FNL & 2446°FEL, SEC.29)
Field: WELD COUNTY (NAD83, TRUE NORTH) Well: GOETZEL 31N-30B-M
Facility: SEC.29-T06N-R66W Wellbore: GOETZEL 31N-30B-M PWB

Plot reference wellpath is GOETZEL 31N-30B-M PWP (REV-A.0)	Grid System: NAD83 / Lambert Colorado SP, Northern Zone (501), US feet
True vertical depths are referenced to PRECISION 462 (20KB) (RKB)	* = Wellpath was transformed from a different geodetic datum
Measured depths are referenced to PRECISION 462 (20KB) (RKB)	North Reference: True north
PRECISION 462 (20KB) (RKB) to Mean Sea Level: 4748 feet	Scale: True distance
Mean Sea Level to Mud line (At Slot: SLOT#06 GOETZEL 31N-30B-M (1913°FNL & 2446°FEL, SEC.29)): 0 feet	Depths are in feet
Coordinates are in feet referenced to Slot	Created by: ingmjmr on 2016-11-15
	Database: WA_DEN_Denver_Defn

Location Information

Facility Name			Grid East (US ft)	Grid North (US ft)	Latitude	Longitude
SEC.29-T06N-R66W			3194449.862	1411671.989	40°27'40.817"N	104°48'04.259"W
Slot	Local N (ft)	Local E (ft)	Grid East (US ft)	Grid North (US ft)	Latitude	Longitude
SLOT#06 GOETZEL 31N-30B-M (1913°FNL & 2446°FEL, SEC.29)	-99.86	-0.56	3194449.892	1411572.127	40°27'39.830"N	104°48'04.266"W
PRECISION 462 (20KB) (RKB) to Mud line (At Slot: SLOT#06 GOETZEL 31N-30B-M (1913°FNL & 2446°FEL, SEC.29))						4748R
Mean Sea Level to Mud line (At Slot: SLOT#06 GOETZEL 31N-30B-M (1913°FNL & 2446°FEL, SEC.29))						0ft
PRECISION 462 (20KB) (RKB) to Mean Sea Level						4748R

Tie-On Position

MD (ft)	Inc (°)	Az (°)	TVD (ft)	Local N (ft)	Local E (ft)	Grid East (US ft)	Grid North (US ft)	Latitude	Longitude
20.00	0.000	28.136	20.00	0.00	0.00	3194449.89	1411572.13	40°27'39.830"N	104°48'04.266"W

Well Profile Data

Design Comment	MD (ft)	Inc (°)	Az (°)	TVD (ft)	Local N (ft)	Local E (ft)	DLS (°/100ft)	VS (ft)
Tie On	20.00	0.000	28.136	20.00	0.00	0.00	0.00	0.00
End of Tangent	1900.00	0.000	28.136	1900.00	0.00	0.00	0.00	0.00
End of Build	2399.13	9.983	28.136	2396.61	38.25	20.45	2.00	-18.40
End of Tangent	6391.60	9.983	28.136	6328.63	648.55	346.82	0.00	-311.95
End of 3D Arc	7447.28	90.000	267.877	7013.00	729.04	-290.78	9.00	329.03
End of Tangent	15367.70	90.000	267.877	7013.00	435.67	-8205.76	0.00	8217.32

Survey Program

Start MD (ft)	End MD (ft)	Tool	Model	Log Name/Comment	Wellbore
20.00	1700.00	BHI NavTrak	Custom BHI NavTrak (Standard Rotating) (Rockies 0.03Gt model)		GOETZEL 31N-30B-M PWB
1700.00	15367.70	BHI AutoTrak Curve	Custom BHI AutoTrak Curve (Short) (Rockies 0.03Gt model)		GOETZEL 31N-30B-M PWB

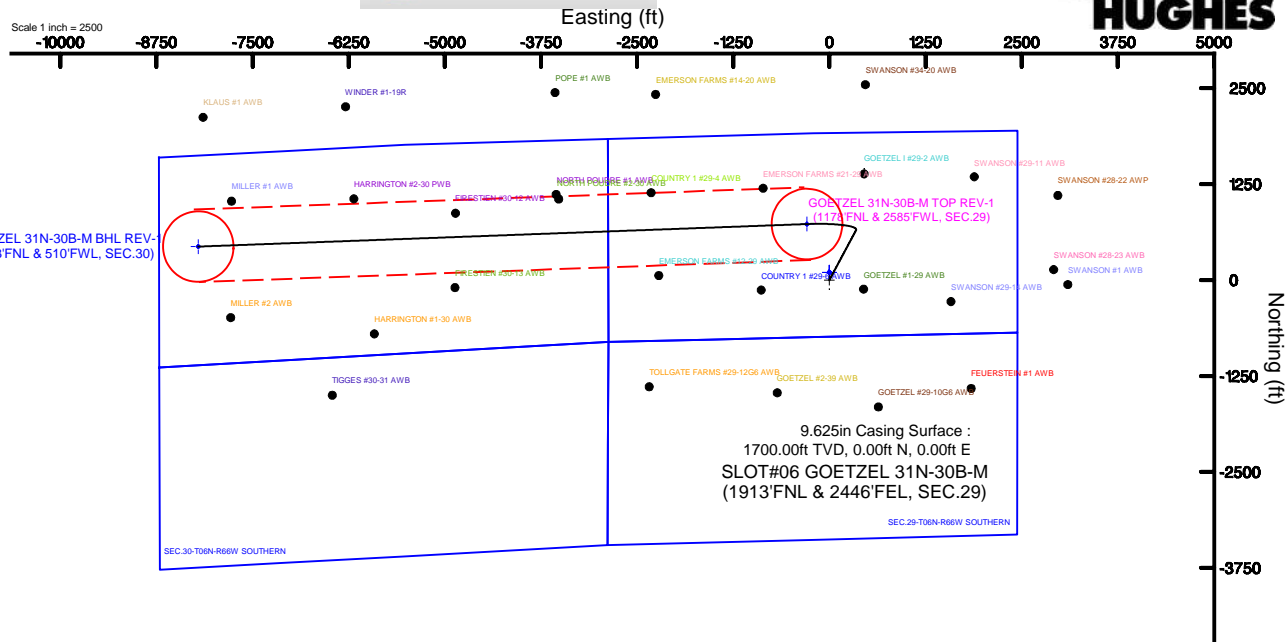
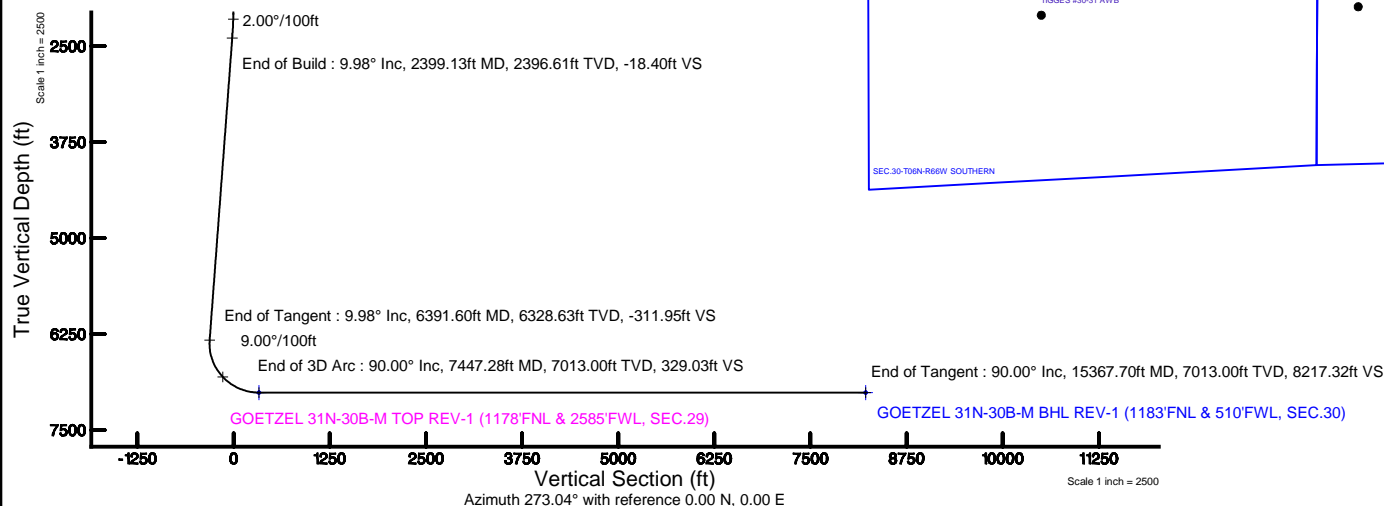
Targets

Name	MD (ft)	TVD (ft)	Local N (ft)	Local E (ft)	Grid East (US ft)	Grid North (US ft)	Latitude	Longitude
SEC.29-T06N-R66W NORTHERN	0.00	99.86	0.56	3194449.66	1411671.99	40°27'40.817"N	104°48'04.259"W	
SEC.29-T06N-R66W SOUTHERN	0.00	99.86	0.56	3194449.66	1411671.99	40°27'40.817"N	104°48'04.259"W	
SEC.30-T06N-R66W NORTHERN	0.00	99.86	0.56	3194449.66	1411671.99	40°27'40.817"N	104°48'04.259"W	
SEC.30-T06N-R66W SOUTHERN	0.00	99.86	0.56	3194449.66	1411671.99	40°27'40.817"N	104°48'04.259"W	
GOETZEL 31N-30B-M BHL REV-1 (1183FNL & 510FNL, SEC.30)	15367.70	7013.00	435.67	-8205.76	3186241.26	1411943.10	40°27'44.122"N	104°48'50.428"W
GOETZEL 31N-30B-M TOP REV-1 (1178FNL & 2585FNL, SEC.29)	7447.28	7013.00	729.04	-290.78	3194153.38	1412298.82	40°27'47.034"N	104°48'08.028"W



BGGM (1900.0 to 2018.0) Dip: 66.93° Field: 52529.3 nT
Magnetic North is 8.46 degrees East of True North (at 11/10/2016)

To correct azimuth from Magnetic to True add 8.46 degrees



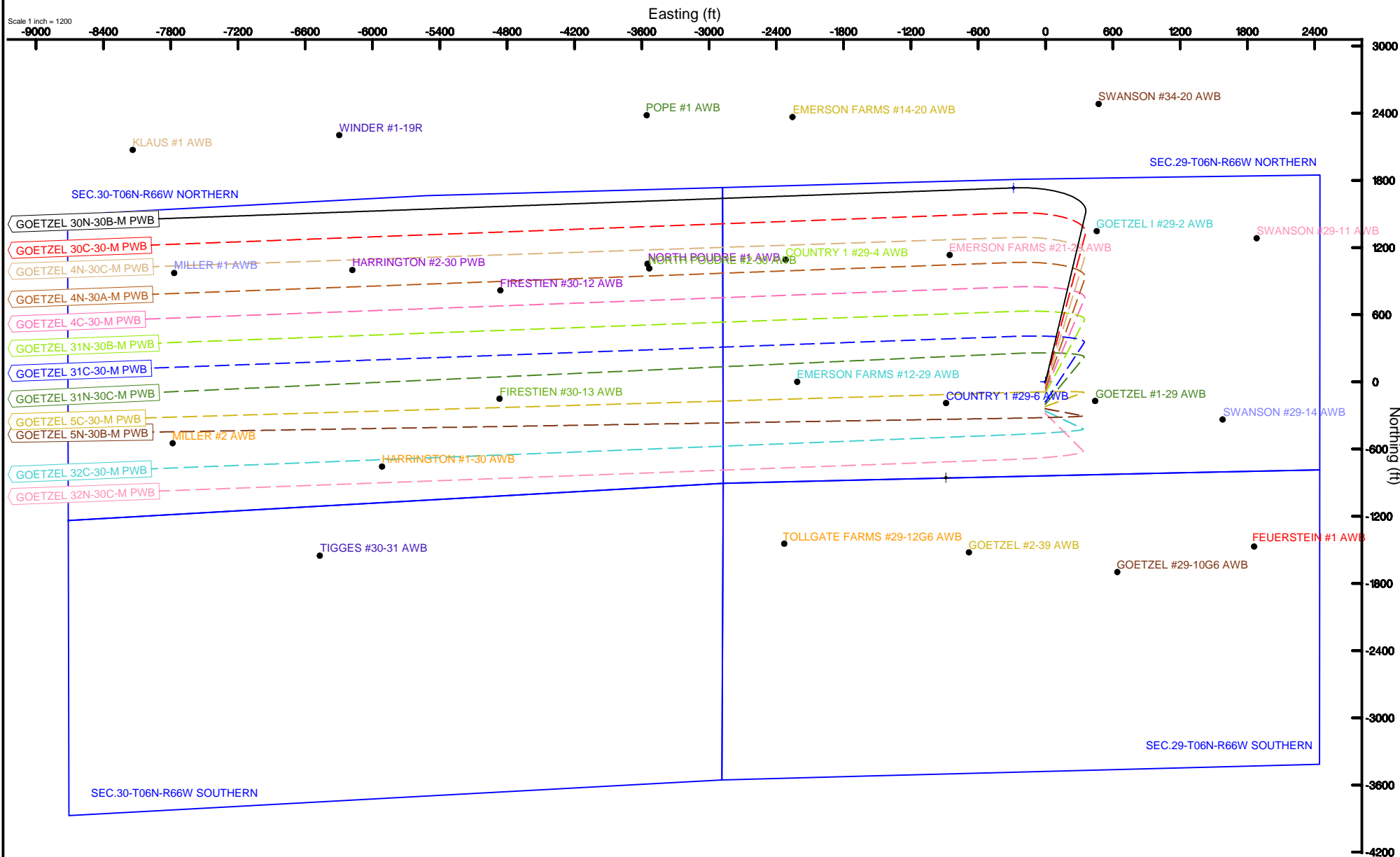
SYNERGY RESOURCES CORPORATION

Location: COLORADO Slot: SLOT#01 GOETZEL 30N-30B-M (1813'FNL & 2445'FEL, SEC.29)
Field: WELD COUNTY (NAD83,TRUE NORTH) Well: GOETZEL 30N-30B-M
Facility: SEC.29-T06N-R66W Wellbore: GOETZEL 30N-30B-M PWB



BGGM (1900.0 to 2018.0) Dip: 66.93° Field: 52529.3 nT
Magnetic North is 8.46 degrees East of True North (at 11/10/2016)

To correct azimuth from Magnetic to True add 8.46 degrees



GOETZEL_31N-30B-M_PWP__REV-A.0_.1as

~VERSION INFORMATION

VERS. 2.0 : CWLS LOG ASCII STANDARD-VERSION 2.0

WRAP. NO : ASCII DATA SECTION CONTAINS ONE ROW PER WELLPATH STATION

~WELL INFORMATION

#MNEM	.UNITS	DATA	:DESCRIPTION
#-----	.-----	----	:-----
STRT	.ft	0.00	:START MD
STOP	.ft	15367.70	:STOP MD
STEP	.ft	0.0	:STEP (non-uniform increment)
NULL	.	-999.99	:NULL
COMP	.	SYNERGY RESOURCES CORPORATION	:OPERATOR
WELL	.	GOETZEL 31N-30B-M	:WELL
FLD	.	WELD COUNTY (NAD83,TRUE NORTH)	:FIELD
LOC	.	COLORADO	:AREA (aka: Location)
CNTY	.	N/A	:COUNTY
STAT	.	N/A	:STATE
CTRY	.	N/A	:COUNTRY
SRVC	.	Baker Hughes	:CONTRACTOR
DATE	.	11/10/2016	:LOG REV DATE
API	.		:API NUMBER

~OTHER INFORMATION

#Software: WellArchitect(R) Version 5.0

#MNEM	.UNITS	DATA	:DESCRIPTION
#-----	.-----	----	:-----
WPTYPE	.	PLANNED WELLPATH	:WELLPATH TYPE
FACILITY	.	SEC.29-T06N-R66W	:FACILITY
SLOT	.	SLOT#06 GOETZEL 31N-30B-M (1913'FNL & 2446'FEL, SEC.29):SLOT	:SLOT
WELLBORE	.	GOETZEL 31N-30B-M PWB	:WELLBORE
WELLPATH	.	GOETZEL 31N-30B-M PWP (REV-A.0)	:WELLPATH
MDREFPT	.	PRECISION 462 (20'KB) (RKB)	:MD REFERENCE POINT
TVDREFPT	.	PRECISION 462 (20'KB) (RKB)	:TVD REFERENCE POINT
LCLREFPT	.	SLOT	:LOCAL COORDINATE REFERENCE PT
VSAZIMUTH	.deg	273.04	:VERTICAL SECTION AZIMUTH
VSORIGN	.ft	0.00	:VERTICAL SECTION ORIGIN NORTH
VSORIGE	.ft	0.00	:VERTICAL SECTION ORIGIN EAST

~CURVE (WELLPATH) INFORMATION

#MNEM	.UNITS	:DESCRIPTION
#-----	.-----	:-----
DEPT	.ft	:MEASURED DEPTH
INC	.deg	:INCLINATION
AZI	.deg	:AZIMUTH
TVD	.ft	:TRUE VERTICAL DEPTH
SECT	.ft	:CROSS SECTION (CURTAIN/VERTICAL)
LOCALN	.ft	:LOCAL NORTH
LOCALE	.ft	:LOCAL EAST

GOETZEL_31N-30B-M_PWP__REV-A.0_.1as

LAT .deg :LATITUDE
 LONG .deg :LONGITUDE
 DLS .deg/100ft :DOGLEG SEVERITY

~ASCII DATA

0.00	0.00	28.14	0.00	0.00	0.00	0.00	40.4610639	-104.8011850	0.00
20.00	0.00	28.14	20.00	0.00	0.00	0.00	40.4610639	-104.8011850	0.00
120.00	0.00	28.14	120.00	0.00	0.00	0.00	40.4610639	-104.8011850	0.00
220.00	0.00	28.14	220.00	0.00	0.00	0.00	40.4610639	-104.8011850	0.00
320.00	0.00	28.14	320.00	0.00	0.00	0.00	40.4610639	-104.8011850	0.00
420.00	0.00	28.14	420.00	0.00	0.00	0.00	40.4610639	-104.8011850	0.00
520.00	0.00	28.14	520.00	0.00	0.00	0.00	40.4610639	-104.8011850	0.00
620.00	0.00	28.14	620.00	0.00	0.00	0.00	40.4610639	-104.8011850	0.00
720.00	0.00	28.14	720.00	0.00	0.00	0.00	40.4610639	-104.8011850	0.00
820.00	0.00	28.14	820.00	0.00	0.00	0.00	40.4610639	-104.8011850	0.00
920.00	0.00	28.14	920.00	0.00	0.00	0.00	40.4610639	-104.8011850	0.00
1020.00	0.00	28.14	1020.00	0.00	0.00	0.00	40.4610639	-104.8011850	0.00
1120.00	0.00	28.14	1120.00	0.00	0.00	0.00	40.4610639	-104.8011850	0.00
1220.00	0.00	28.14	1220.00	0.00	0.00	0.00	40.4610639	-104.8011850	0.00
1320.00	0.00	28.14	1320.00	0.00	0.00	0.00	40.4610639	-104.8011850	0.00
1420.00	0.00	28.14	1420.00	0.00	0.00	0.00	40.4610639	-104.8011850	0.00
1520.00	0.00	28.14	1520.00	0.00	0.00	0.00	40.4610639	-104.8011850	0.00
1620.00	0.00	28.14	1620.00	0.00	0.00	0.00	40.4610639	-104.8011850	0.00
1720.00	0.00	28.14	1720.00	0.00	0.00	0.00	40.4610639	-104.8011850	0.00
1820.00	0.00	28.14	1820.00	0.00	0.00	0.00	40.4610639	-104.8011850	0.00
1900.00	0.00	28.14	1900.00	0.00	0.00	0.00	40.4610639	-104.8011850	0.00
1920.00	0.40	28.14	1920.00	-0.03	0.06	0.03	40.4610641	-104.8011849	2.00
2020.00	2.40	28.14	2019.96	-1.07	2.22	1.19	40.4610700	-104.8011807	2.00
2120.00	4.40	28.14	2119.78	-3.58	7.45	3.98	40.4610843	-104.8011707	2.00
2220.00	6.40	28.14	2219.33	-7.57	15.74	8.42	40.4611071	-104.8011547	2.00
2320.00	8.40	28.14	2318.50	-13.04	27.10	14.49	40.4611383	-104.8011329	2.00
2399.13	9.98	28.14	2396.61	-18.40	38.25	20.45	40.4611689	-104.8011115	2.00
2420.00	9.98	28.14	2417.16	-19.93	41.44	22.16	40.4611776	-104.8011054	0.00
2520.00	9.98	28.14	2515.65	-27.28	56.72	30.33	40.4612196	-104.8010760	0.00
2620.00	9.98	28.14	2614.13	-34.64	72.01	38.51	40.4612615	-104.8010466	0.00
2720.00	9.98	28.14	2712.62	-41.99	87.30	46.68	40.4613035	-104.8010172	0.00
2820.00	9.98	28.14	2811.11	-49.34	102.58	54.86	40.4613455	-104.8009879	0.00
2920.00	9.98	28.14	2909.59	-56.69	117.87	63.03	40.4613874	-104.8009585	0.00
3020.00	9.98	28.14	3008.08	-64.05	133.16	71.21	40.4614294	-104.8009291	0.00
3120.00	9.98	28.14	3106.56	-71.40	148.44	79.38	40.4614713	-104.8008997	0.00
3220.00	9.98	28.14	3205.05	-78.75	163.73	87.56	40.4615133	-104.8008704	0.00
3320.00	9.98	28.14	3303.54	-86.10	179.01	95.73	40.4615553	-104.8008410	0.00
3420.00	9.98	28.14	3402.02	-93.46	194.30	103.90	40.4615972	-104.8008116	0.00
3520.00	9.98	28.14	3500.51	-100.81	209.59	112.08	40.4616392	-104.8007822	0.00
3620.00	9.98	28.14	3599.00	-108.16	224.87	120.25	40.4616811	-104.8007528	0.00
3720.00	9.98	28.14	3697.48	-115.51	240.16	128.43	40.4617231	-104.8007235	0.00
3820.00	9.98	28.14	3795.97	-122.87	255.45	136.60	40.4617651	-104.8006941	0.00
3920.00	9.98	28.14	3894.45	-130.22	270.73	144.78	40.4618070	-104.8006647	0.00

GOETZEL_31N-30B-M_PWP__REV-A.0_1as									
4020.00	9.98	28.14	3992.94	-137.57	286.02	152.95	40.4618490	-104.8006353	0.00
4120.00	9.98	28.14	4091.43	-144.93	301.31	161.13	40.4618909	-104.8006060	0.00
4220.00	9.98	28.14	4189.91	-152.28	316.59	169.30	40.4619329	-104.8005766	0.00
4320.00	9.98	28.14	4288.40	-159.63	331.88	177.48	40.4619749	-104.8005472	0.00
4420.00	9.98	28.14	4386.88	-166.98	347.17	185.65	40.4620168	-104.8005178	0.00
4520.00	9.98	28.14	4485.37	-174.34	362.45	193.83	40.4620588	-104.8004885	0.00
4620.00	9.98	28.14	4583.86	-181.69	377.74	202.00	40.4621007	-104.8004591	0.00
4720.00	9.98	28.14	4682.34	-189.04	393.03	210.17	40.4621427	-104.8004297	0.00
4820.00	9.98	28.14	4780.83	-196.39	408.31	218.35	40.4621846	-104.8004003	0.00
4920.00	9.98	28.14	4879.31	-203.75	423.60	226.52	40.4622266	-104.8003709	0.00
5020.00	9.98	28.14	4977.80	-211.10	438.88	234.70	40.4622686	-104.8003416	0.00
5120.00	9.98	28.14	5076.29	-218.45	454.17	242.87	40.4623105	-104.8003122	0.00
5220.00	9.98	28.14	5174.77	-225.80	469.46	251.05	40.4623525	-104.8002828	0.00
5320.00	9.98	28.14	5273.26	-233.16	484.74	259.22	40.4623944	-104.8002534	0.00
5420.00	9.98	28.14	5371.74	-240.51	500.03	267.40	40.4624364	-104.8002241	0.00
5520.00	9.98	28.14	5470.23	-247.86	515.32	275.57	40.4624784	-104.8001947	0.00
5620.00	9.98	28.14	5568.72	-255.22	530.60	283.75	40.4625203	-104.8001653	0.00
5720.00	9.98	28.14	5667.20	-262.57	545.89	291.92	40.4625623	-104.8001359	0.00
5820.00	9.98	28.14	5765.69	-269.92	561.18	300.10	40.4626042	-104.8001065	0.00
5920.00	9.98	28.14	5864.17	-277.27	576.46	308.27	40.4626462	-104.8000772	0.00
6020.00	9.98	28.14	5962.66	-284.63	591.75	316.44	40.4626882	-104.8000478	0.00
6120.00	9.98	28.14	6061.15	-291.98	607.04	324.62	40.4627301	-104.8000184	0.00
6220.00	9.98	28.14	6159.63	-299.33	622.32	332.79	40.4627721	-104.7999890	0.00
6320.00	9.98	28.14	6258.12	-306.68	637.61	340.97	40.4628140	-104.7999597	0.00
6391.60	9.98	28.14	6328.63	-311.95	648.55	346.82	40.4628441	-104.7999386	0.00
6420.00	8.98	13.80	6356.65	-313.41	652.88	348.51	40.4628559	-104.7999325	9.00
6520.00	10.83	320.52	6455.35	-308.51	667.74	344.39	40.4628967	-104.7999473	9.00
6620.00	17.74	296.26	6552.28	-288.12	681.76	324.72	40.4629352	-104.8000180	9.00
6720.00	25.93	286.10	6645.06	-252.75	694.59	289.98	40.4629704	-104.8001429	9.00
6820.00	34.51	280.65	6731.40	-203.27	705.91	241.03	40.4630015	-104.8003188	9.00
6920.00	43.25	277.18	6809.18	-140.89	715.45	179.07	40.4630277	-104.8005415	9.00
7020.00	52.06	274.68	6876.48	-67.15	722.96	105.63	40.4630483	-104.8008054	9.00
7120.00	60.91	272.73	6931.65	16.13	728.27	22.51	40.4630629	-104.8011041	9.00
7220.00	69.79	271.09	6973.31	106.90	731.25	-68.23	40.4630711	-104.8014302	9.00
7320.00	78.68	269.62	7000.46	202.93	731.82	-164.37	40.4630726	-104.8017757	9.00
7420.00	87.57	268.25	7012.42	301.86	729.96	-263.53	40.4630675	-104.8021320	9.00
7447.28	90.00	267.88	7013.00	329.03	729.04	-290.78	40.4630650	-104.8022300	9.00
7520.00	90.00	267.88	7013.00	401.45	726.35	-363.45	40.4630576	-104.8024912	0.00
7620.00	90.00	267.88	7013.00	501.05	722.64	-463.38	40.4630474	-104.8028503	0.00
7720.00	90.00	267.88	7013.00	600.64	718.94	-563.32	40.4630373	-104.8032094	0.00
7820.00	90.00	267.88	7013.00	700.23	715.23	-663.25	40.4630271	-104.8035685	0.00
7920.00	90.00	267.88	7013.00	799.83	711.53	-763.18	40.4630169	-104.8039277	0.00
8020.00	90.00	267.88	7013.00	899.42	707.83	-863.11	40.4630067	-104.8042868	0.00
8120.00	90.00	267.88	7013.00	999.02	704.12	-963.04	40.4629966	-104.8046459	0.00
8220.00	90.00	267.88	7013.00	1098.61	700.42	-1062.97	40.4629864	-104.8050050	0.00
8320.00	90.00	267.88	7013.00	1198.21	696.71	-1162.90	40.4629762	-104.8053642	0.00
8420.00	90.00	267.88	7013.00	1297.80	693.01	-1262.84	40.4629660	-104.8057233	0.00
8520.00	90.00	267.88	7013.00	1397.40	689.31	-1362.77	40.4629558	-104.8060824	0.00

				GOETZEL_31N-30B-M_PWP__REV-A.0_.1as					
8620.00	90.00	267.88	7013.00	1496.99	685.60	-1462.70	40.4629457	-104.8064415	0.00
8720.00	90.00	267.88	7013.00	1596.58	681.90	-1562.63	40.4629355	-104.8068007	0.00
8820.00	90.00	267.88	7013.00	1696.18	678.19	-1662.56	40.4629253	-104.8071598	0.00
8920.00	90.00	267.88	7013.00	1795.77	674.49	-1762.49	40.4629151	-104.8075189	0.00
9020.00	90.00	267.88	7013.00	1895.37	670.79	-1862.42	40.4629049	-104.8078780	0.00
9120.00	90.00	267.88	7013.00	1994.96	667.08	-1962.35	40.4628947	-104.8082372	0.00
9220.00	90.00	267.88	7013.00	2094.56	663.38	-2062.29	40.4628845	-104.8085963	0.00
9320.00	90.00	267.88	7013.00	2194.15	659.67	-2162.22	40.4628743	-104.8089554	0.00
9420.00	90.00	267.88	7013.00	2293.75	655.97	-2262.15	40.4628642	-104.8093145	0.00
9520.00	90.00	267.88	7013.00	2393.34	652.27	-2362.08	40.4628540	-104.8096737	0.00
9620.00	90.00	267.88	7013.00	2492.93	648.56	-2462.01	40.4628438	-104.8100328	0.00
9720.00	90.00	267.88	7013.00	2592.53	644.86	-2561.94	40.4628336	-104.8103919	0.00
9820.00	90.00	267.88	7013.00	2692.12	641.15	-2661.87	40.4628234	-104.8107510	0.00
9920.00	90.00	267.88	7013.00	2791.72	637.45	-2761.81	40.4628132	-104.8111102	0.00
10020.00	90.00	267.88	7013.00	2891.31	633.75	-2861.74	40.4628030	-104.8114693	0.00
10120.00	90.00	267.88	7013.00	2990.91	630.04	-2961.67	40.4627928	-104.8118284	0.00
10220.00	90.00	267.88	7013.00	3090.50	626.34	-3061.60	40.4627826	-104.8121875	0.00
10320.00	90.00	267.88	7013.00	3190.10	622.63	-3161.53	40.4627724	-104.8125467	0.00
10420.00	90.00	267.88	7013.00	3289.69	618.93	-3261.46	40.4627622	-104.8129058	0.00
10520.00	90.00	267.88	7013.00	3389.28	615.23	-3361.39	40.4627520	-104.8132649	0.00
10620.00	90.00	267.88	7013.00	3488.88	611.52	-3461.33	40.4627418	-104.8136240	0.00
10720.00	90.00	267.88	7013.00	3588.47	607.82	-3561.26	40.4627316	-104.8139832	0.00
10820.00	90.00	267.88	7013.00	3688.07	604.11	-3661.19	40.4627214	-104.8143423	0.00
10920.00	90.00	267.88	7013.00	3787.66	600.41	-3761.12	40.4627112	-104.8147014	0.00
11020.00	90.00	267.88	7013.00	3887.26	596.71	-3861.05	40.4627009	-104.8150605	0.00
11120.00	90.00	267.88	7013.00	3986.85	593.00	-3960.98	40.4626907	-104.8154196	0.00
11220.00	90.00	267.88	7013.00	4086.45	589.30	-4060.91	40.4626805	-104.8157788	0.00
11320.00	90.00	267.88	7013.00	4186.04	585.59	-4160.85	40.4626703	-104.8161379	0.00
11420.00	90.00	267.88	7013.00	4285.63	581.89	-4260.78	40.4626601	-104.8164970	0.00
11520.00	90.00	267.88	7013.00	4385.23	578.19	-4360.71	40.4626499	-104.8168561	0.00
11620.00	90.00	267.88	7013.00	4484.82	574.48	-4460.64	40.4626397	-104.8172153	0.00
11720.00	90.00	267.88	7013.00	4584.42	570.78	-4560.57	40.4626294	-104.8175744	0.00
11820.00	90.00	267.88	7013.00	4684.01	567.07	-4660.50	40.4626192	-104.8179335	0.00
11920.00	90.00	267.88	7013.00	4783.61	563.37	-4760.43	40.4626090	-104.8182926	0.00
12020.00	90.00	267.88	7013.00	4883.20	559.67	-4860.36	40.4625988	-104.8186517	0.00
12120.00	90.00	267.88	7013.00	4982.80	555.96	-4960.30	40.4625886	-104.8190109	0.00
12220.00	90.00	267.88	7013.00	5082.39	552.26	-5060.23	40.4625783	-104.8193700	0.00
12320.00	90.00	267.88	7013.00	5181.98	548.56	-5160.16	40.4625681	-104.8197291	0.00
12420.00	90.00	267.88	7013.00	5281.58	544.85	-5260.09	40.4625579	-104.8200882	0.00
12520.00	90.00	267.88	7013.00	5381.17	541.15	-5360.02	40.4625477	-104.8204474	0.00
12620.00	90.00	267.88	7013.00	5480.77	537.44	-5459.95	40.4625374	-104.8208065	0.00
12720.00	90.00	267.88	7013.00	5580.36	533.74	-5559.88	40.4625272	-104.8211656	0.00
12820.00	90.00	267.88	7013.00	5679.96	530.04	-5659.82	40.4625170	-104.8215247	0.00
12920.00	90.00	267.88	7013.00	5779.55	526.33	-5759.75	40.4625068	-104.8218838	0.00
13020.00	90.00	267.88	7013.00	5879.15	522.63	-5859.68	40.4624965	-104.8222430	0.00
13120.00	90.00	267.88	7013.00	5978.74	518.92	-5959.61	40.4624863	-104.8226021	0.00
13220.00	90.00	267.88	7013.00	6078.34	515.22	-6059.54	40.4624761	-104.8229612	0.00
13320.00	90.00	267.88	7013.00	6177.93	511.52	-6159.47	40.4624658	-104.8233203	0.00

				GOETZEL_31N-30B-M_PWP__REV-A.0_1as						
13420.00	90.00	267.88	7013.00	6277.52	507.81	-6259.40	40.4624556	-104.8236794	0.00	
13520.00	90.00	267.88	7013.00	6377.12	504.11	-6359.34	40.4624453	-104.8240386	0.00	
13620.00	90.00	267.88	7013.00	6476.71	500.40	-6459.27	40.4624351	-104.8243977	0.00	
13720.00	90.00	267.88	7013.00	6576.31	496.70	-6559.20	40.4624249	-104.8247568	0.00	
13820.00	90.00	267.88	7013.00	6675.90	493.00	-6659.13	40.4624146	-104.8251159	0.00	
13920.00	90.00	267.88	7013.00	6775.50	489.29	-6759.06	40.4624044	-104.8254750	0.00	
14020.00	90.00	267.88	7013.00	6875.09	485.59	-6858.99	40.4623941	-104.8258342	0.00	
14120.00	90.00	267.88	7013.00	6974.69	481.88	-6958.92	40.4623839	-104.8261933	0.00	
14220.00	90.00	267.88	7013.00	7074.28	478.18	-7058.86	40.4623737	-104.8265524	0.00	
14320.00	90.00	267.88	7013.00	7173.87	474.48	-7158.79	40.4623634	-104.8269115	0.00	
14420.00	90.00	267.88	7013.00	7273.47	470.77	-7258.72	40.4623532	-104.8272706	0.00	
14520.00	90.00	267.88	7013.00	7373.06	467.07	-7358.65	40.4623429	-104.8276298	0.00	
14620.00	90.00	267.88	7013.00	7472.66	463.36	-7458.58	40.4623327	-104.8279889	0.00	
14720.00	90.00	267.88	7013.00	7572.25	459.66	-7558.51	40.4623224	-104.8283480	0.00	
14820.00	90.00	267.88	7013.00	7671.85	455.96	-7658.44	40.4623122	-104.8287071	0.00	
14920.00	90.00	267.88	7013.00	7771.44	452.25	-7758.37	40.4623019	-104.8290662	0.00	
15020.00	90.00	267.88	7013.00	7871.04	448.55	-7858.31	40.4622917	-104.8294254	0.00	
15120.00	90.00	267.88	7013.00	7970.63	444.84	-7958.24	40.4622814	-104.8297845	0.00	
15220.00	90.00	267.88	7013.00	8070.22	441.14	-8058.17	40.4622711	-104.8301436	0.00	
15320.00	90.00	267.88	7013.00	8169.82	437.44	-8158.10	40.4622609	-104.8305027	0.00	
15367.70	90.00	267.88	7013.00	8217.32	435.67	-8205.76	40.4622560	-104.8306740	0.00	



Planned Wellpath Report

GOETZEL 31N-30B-M PWP (REV-A.0)

Page 1 of 7



REFERENCE WELLPATH IDENTIFICATION

Operator	SYNERGY RESOURCES CORPORATION	Slot	SLOT#06 GOETZEL 31N-30B-M (1913'FNL & 2446'FEL, SEC.29)
Area	COLORADO	Well	GOETZEL 31N-30B-M
Field	WELD COUNTY (NAD83,TRUE NORTH)	Wellbore	GOETZEL 31N-30B-M PWB
Facility	SEC.29-T06N-R66W		

REPORT SETUP INFORMATION

Projection System	NAD83 / Lambert Colorado SP, Northern Zone (501), US feet	Software System	WellArchitect® 5.0
North Reference	True	User	Ingmjmr
Scale	0.999964	Report Generated	11/15/2016 at 9:59:59 AM
Convergence at slot	0.46° East	Database/Source file	WA_DEN_Denver_Defn/GOETZEL_31N-30B-M_PWP_REV-A.0_.xml

WELLPATH LOCATION

	Local coordinates		Grid coordinates		Geographic coordinates	
	North[ft]	East[ft]	Easting[US ft]	Northing[US ft]	Latitude	Longitude
Slot Location	-99.86	-0.56	3194449.89	1411572.13	40°27'39.830"N	104°48'04.266"W
Facility Reference Pt			3194449.66	1411671.99	40°27'40.817"N	104°48'04.259"W
Field Reference Pt			3171284.48	1426358.81	40°30'07.643"N	104°53'02.634"W

WELLPATH DATUM

Calculation method	Minimum curvature	PRECISION 462 (20'KB) (RKB) to Facility Vertical Datum	4748.00ft
Horizontal Reference Pt	Slot	PRECISION 462 (20'KB) (RKB) to Mean Sea Level	4748.00ft
Vertical Reference Pt	PRECISION 462 (20'KB) (RKB)	PRECISION 462 (20'KB) (RKB) to Mud Line at Slot (SLOT#06 GOETZEL 31N-30B-M (1913'FNL & 2446'FEL, SEC.29))	4748.00ft
MD Reference Pt	PRECISION 462 (20'KB) (RKB)	Section Origin	N 0.00, E 0.00 ft
Field Vertical Reference	Mean Sea Level	Section Azimuth	273.04°



Planned Wellpath Report

GOETZEL 31N-30B-M PWP (REV-A.0)

Page 2 of 7



REFERENCE WELLPATH IDENTIFICATION			
Operator	SYNERGY RESOURCES CORPORATION	Slot	SLOT#06 GOETZEL 31N-30B-M (1913'FNL & 2446'FEL, SEC.29)
Area	COLORADO	Well	GOETZEL 31N-30B-M
Field	WELD COUNTY (NAD83,TRUE NORTH)	Wellbore	GOETZEL 31N-30B-M PWB
Facility	SEC.29-T06N-R66W		

WELLPATH DATA (160 stations) † = interpolated/extrapolated station								
MD [ft]	Inclination [°]	Azimuth [°]	TVD [ft]	Vert Sect [ft]	North [ft]	East [ft]	DLS [°/100ft]	Comments
0.00†	0.000	28.136	0.00	0.00	0.00	0.00	0.00	
20.00	0.000	28.136	20.00	0.00	0.00	0.00	0.00	Tie On
120.00†	0.000	28.136	120.00	0.00	0.00	0.00	0.00	
220.00†	0.000	28.136	220.00	0.00	0.00	0.00	0.00	
320.00†	0.000	28.136	320.00	0.00	0.00	0.00	0.00	
420.00†	0.000	28.136	420.00	0.00	0.00	0.00	0.00	
520.00†	0.000	28.136	520.00	0.00	0.00	0.00	0.00	
620.00†	0.000	28.136	620.00	0.00	0.00	0.00	0.00	
720.00†	0.000	28.136	720.00	0.00	0.00	0.00	0.00	
820.00†	0.000	28.136	820.00	0.00	0.00	0.00	0.00	
920.00†	0.000	28.136	920.00	0.00	0.00	0.00	0.00	
1020.00†	0.000	28.136	1020.00	0.00	0.00	0.00	0.00	
1120.00†	0.000	28.136	1120.00	0.00	0.00	0.00	0.00	
1220.00†	0.000	28.136	1220.00	0.00	0.00	0.00	0.00	
1320.00†	0.000	28.136	1320.00	0.00	0.00	0.00	0.00	
1420.00†	0.000	28.136	1420.00	0.00	0.00	0.00	0.00	
1520.00†	0.000	28.136	1520.00	0.00	0.00	0.00	0.00	
1620.00†	0.000	28.136	1620.00	0.00	0.00	0.00	0.00	
1720.00†	0.000	28.136	1720.00	0.00	0.00	0.00	0.00	
1820.00†	0.000	28.136	1820.00	0.00	0.00	0.00	0.00	
1900.00	0.000	28.136	1900.00	0.00	0.00	0.00	0.00	End of Tangent
1920.00†	0.400	28.136	1920.00	-0.03	0.06	0.03	2.00	
2020.00†	2.400	28.136	2019.96	-1.07	2.22	1.19	2.00	
2120.00†	4.400	28.136	2119.78	-3.58	7.45	3.98	2.00	
2220.00†	6.400	28.136	2219.33	-7.57	15.74	8.42	2.00	
2320.00†	8.400	28.136	2318.50	-13.04	27.10	14.49	2.00	
2399.13	9.983	28.136	2396.61	-18.40	38.25	20.45	2.00	End of Build
2420.00†	9.983	28.136	2417.16	-19.93	41.44	22.16	0.00	
2520.00†	9.983	28.136	2515.65	-27.28	56.72	30.33	0.00	
2620.00†	9.983	28.136	2614.13	-34.64	72.01	38.51	0.00	
2720.00†	9.983	28.136	2712.62	-41.99	87.30	46.68	0.00	
2820.00†	9.983	28.136	2811.11	-49.34	102.58	54.86	0.00	
2920.00†	9.983	28.136	2909.59	-56.69	117.87	63.03	0.00	
3020.00†	9.983	28.136	3008.08	-64.05	133.16	71.21	0.00	
3120.00†	9.983	28.136	3106.56	-71.40	148.44	79.38	0.00	
3220.00†	9.983	28.136	3205.05	-78.75	163.73	87.56	0.00	
3320.00†	9.983	28.136	3303.54	-86.10	179.01	95.73	0.00	
3420.00†	9.983	28.136	3402.02	-93.46	194.30	103.90	0.00	
3520.00†	9.983	28.136	3500.51	-100.81	209.59	112.08	0.00	
3620.00†	9.983	28.136	3599.00	-108.16	224.87	120.25	0.00	
3720.00†	9.983	28.136	3697.48	-115.51	240.16	128.43	0.00	
3820.00†	9.983	28.136	3795.97	-122.87	255.45	136.60	0.00	
3920.00†	9.983	28.136	3894.45	-130.22	270.73	144.78	0.00	
4020.00†	9.983	28.136	3992.94	-137.57	286.02	152.95	0.00	
4120.00†	9.983	28.136	4091.43	-144.93	301.31	161.13	0.00	



Planned Wellpath Report

GOETZEL 31N-30B-M PWP (REV-A.0)

Page 3 of 7



REFERENCE WELLPATH IDENTIFICATION

Operator	SYNERGY RESOURCES CORPORATION	Slot	SLOT#06 GOETZEL 31N-30B-M (1913'FNL & 2446'FEL, SEC.29)
Area	COLORADO	Well	GOETZEL 31N-30B-M
Field	WELD COUNTY (NAD83,TRUE NORTH)	Wellbore	GOETZEL 31N-30B-M PWB
Facility	SEC.29-T06N-R66W		

WELLPATH DATA (160 stations) † = interpolated/extrapolated station

MD [ft]	Inclination [°]	Azimuth [°]	TVD [ft]	Vert Sect [ft]	North [ft]	East [ft]	DLS [°/100ft]	Comments
4220.00†	9.983	28.136	4189.91	-152.28	316.59	169.30	0.00	
4320.00†	9.983	28.136	4288.40	-159.63	331.88	177.48	0.00	
4420.00†	9.983	28.136	4386.88	-166.98	347.17	185.65	0.00	
4520.00†	9.983	28.136	4485.37	-174.34	362.45	193.83	0.00	
4620.00†	9.983	28.136	4583.86	-181.69	377.74	202.00	0.00	
4720.00†	9.983	28.136	4682.34	-189.04	393.03	210.17	0.00	
4820.00†	9.983	28.136	4780.83	-196.39	408.31	218.35	0.00	
4920.00†	9.983	28.136	4879.31	-203.75	423.60	226.52	0.00	
5020.00†	9.983	28.136	4977.80	-211.10	438.88	234.70	0.00	
5120.00†	9.983	28.136	5076.29	-218.45	454.17	242.87	0.00	
5220.00†	9.983	28.136	5174.77	-225.80	469.46	251.05	0.00	
5320.00†	9.983	28.136	5273.26	-233.16	484.74	259.22	0.00	
5420.00†	9.983	28.136	5371.74	-240.51	500.03	267.40	0.00	
5520.00†	9.983	28.136	5470.23	-247.86	515.32	275.57	0.00	
5620.00†	9.983	28.136	5568.72	-255.22	530.60	283.75	0.00	
5720.00†	9.983	28.136	5667.20	-262.57	545.89	291.92	0.00	
5820.00†	9.983	28.136	5765.69	-269.92	561.18	300.10	0.00	
5920.00†	9.983	28.136	5864.17	-277.27	576.46	308.27	0.00	
6020.00†	9.983	28.136	5962.66	-284.63	591.75	316.44	0.00	
6120.00†	9.983	28.136	6061.15	-291.98	607.04	324.62	0.00	
6220.00†	9.983	28.136	6159.63	-299.33	622.32	332.79	0.00	
6320.00†	9.983	28.136	6258.12	-306.68	637.61	340.97	0.00	
6391.60	9.983	28.136	6328.63	-311.95	648.55	346.82	0.00	End of Tangent
6420.00†	8.984	13.800	6356.65	-313.41	652.88	348.51	9.00	
6520.00†	10.828	320.523	6455.35	-308.51	667.74	344.39	9.00	
6620.00†	17.735	296.262	6552.28	-288.12	681.76	324.72	9.00	
6720.00†	25.933	286.096	6645.06	-252.75	694.59	289.98	9.00	
6820.00†	34.514	280.651	6731.40	-203.27	705.91	241.03	9.00	
6920.00†	43.249	277.178	6809.18	-140.89	715.45	179.07	9.00	
7020.00†	52.060	274.684	6876.48	-67.15	722.96	105.63	9.00	
7120.00†	60.912	272.729	6931.65	16.13	728.27	22.51	9.00	
7220.00†	69.787	271.086	6973.31	106.90	731.25	-68.23	9.00	
7320.00†	78.677	269.622	7000.46	202.93	731.82	-164.37	9.00	
7420.00†	87.573	268.247	7012.42	301.86	729.96	-263.53	9.00	
7447.28	90.000	267.877	7013.00†	329.03	729.04	-290.78	9.00	End of 3D Arc
7520.00†	90.000	267.877	7013.00	401.45	726.35	-363.45	0.00	
7620.00†	90.000	267.877	7013.00	501.05	722.64	-463.38	0.00	
7720.00†	90.000	267.877	7013.00	600.64	718.94	-563.32	0.00	
7820.00†	90.000	267.877	7013.00	700.23	715.23	-663.25	0.00	
7920.00†	90.000	267.877	7013.00	799.83	711.53	-763.18	0.00	
8020.00†	90.000	267.877	7013.00	899.42	707.83	-863.11	0.00	
8120.00†	90.000	267.877	7013.00	999.02	704.12	-963.04	0.00	
8220.00†	90.000	267.877	7013.00	1098.61	700.42	-1062.97	0.00	
8320.00†	90.000	267.877	7013.00	1198.21	696.71	-1162.90	0.00	
8420.00†	90.000	267.877	7013.00	1297.80	693.01	-1262.84	0.00	



Planned Wellpath Report

GOETZEL 31N-30B-M PWP (REV-A.0)

Page 4 of 7



REFERENCE WELLPATH IDENTIFICATION			
Operator	SYNERGY RESOURCES CORPORATION	Slot	SLOT#06 GOETZEL 31N-30B-M (1913'FNL & 2446'FEL, SEC.29)
Area	COLORADO	Well	GOETZEL 31N-30B-M
Field	WELD COUNTY (NAD83,TRUE NORTH)	Wellbore	GOETZEL 31N-30B-M PWB
Facility	SEC.29-T06N-R66W		

WELLPATH DATA (160 stations) † = interpolated/extrapolated station								
MD [ft]	Inclination [°]	Azimuth [°]	TVD [ft]	Vert Sect [ft]	North [ft]	East [ft]	DLS [°/100ft]	Comments
8520.00†	90.000	267.877	7013.00	1397.40	689.31	-1362.77	0.00	
8620.00†	90.000	267.877	7013.00	1496.99	685.60	-1462.70	0.00	
8720.00†	90.000	267.877	7013.00	1596.58	681.90	-1562.63	0.00	
8820.00†	90.000	267.877	7013.00	1696.18	678.19	-1662.56	0.00	
8920.00†	90.000	267.877	7013.00	1795.77	674.49	-1762.49	0.00	
9020.00†	90.000	267.877	7013.00	1895.37	670.79	-1862.42	0.00	
9120.00†	90.000	267.877	7013.00	1994.96	667.08	-1962.35	0.00	
9220.00†	90.000	267.877	7013.00	2094.56	663.38	-2062.29	0.00	
9320.00†	90.000	267.877	7013.00	2194.15	659.67	-2162.22	0.00	
9420.00†	90.000	267.877	7013.00	2293.75	655.97	-2262.15	0.00	
9520.00†	90.000	267.877	7013.00	2393.34	652.27	-2362.08	0.00	
9620.00†	90.000	267.877	7013.00	2492.93	648.56	-2462.01	0.00	
9720.00†	90.000	267.877	7013.00	2592.53	644.86	-2561.94	0.00	
9820.00†	90.000	267.877	7013.00	2692.12	641.15	-2661.87	0.00	
9920.00†	90.000	267.877	7013.00	2791.72	637.45	-2761.81	0.00	
10020.00†	90.000	267.877	7013.00	2891.31	633.75	-2861.74	0.00	
10120.00†	90.000	267.877	7013.00	2990.91	630.04	-2961.67	0.00	
10220.00†	90.000	267.877	7013.00	3090.50	626.34	-3061.60	0.00	
10320.00†	90.000	267.877	7013.00	3190.10	622.63	-3161.53	0.00	
10420.00†	90.000	267.877	7013.00	3289.69	618.93	-3261.46	0.00	
10520.00†	90.000	267.877	7013.00	3389.28	615.23	-3361.39	0.00	
10620.00†	90.000	267.877	7013.00	3488.88	611.52	-3461.33	0.00	
10720.00†	90.000	267.877	7013.00	3588.47	607.82	-3561.26	0.00	
10820.00†	90.000	267.877	7013.00	3688.07	604.11	-3661.19	0.00	
10920.00†	90.000	267.877	7013.00	3787.66	600.41	-3761.12	0.00	
11020.00†	90.000	267.877	7013.00	3887.26	596.71	-3861.05	0.00	
11120.00†	90.000	267.877	7013.00	3986.85	593.00	-3960.98	0.00	
11220.00†	90.000	267.877	7013.00	4086.45	589.30	-4060.91	0.00	
11320.00†	90.000	267.877	7013.00	4186.04	585.59	-4160.85	0.00	
11420.00†	90.000	267.877	7013.00	4285.63	581.89	-4260.78	0.00	
11520.00†	90.000	267.877	7013.00	4385.23	578.19	-4360.71	0.00	
11620.00†	90.000	267.877	7013.00	4484.82	574.48	-4460.64	0.00	
11720.00†	90.000	267.877	7013.00	4584.42	570.78	-4560.57	0.00	
11820.00†	90.000	267.877	7013.00	4684.01	567.07	-4660.50	0.00	
11920.00†	90.000	267.877	7013.00	4783.61	563.37	-4760.43	0.00	
12020.00†	90.000	267.877	7013.00	4883.20	559.67	-4860.36	0.00	
12120.00†	90.000	267.877	7013.00	4982.80	555.96	-4960.30	0.00	
12220.00†	90.000	267.877	7013.00	5082.39	552.26	-5060.23	0.00	
12320.00†	90.000	267.877	7013.00	5181.98	548.56	-5160.16	0.00	
12420.00†	90.000	267.877	7013.00	5281.58	544.85	-5260.09	0.00	
12520.00†	90.000	267.877	7013.00	5381.17	541.15	-5360.02	0.00	
12620.00†	90.000	267.877	7013.00	5480.77	537.44	-5459.95	0.00	
12720.00†	90.000	267.877	7013.00	5580.36	533.74	-5559.88	0.00	
12820.00†	90.000	267.877	7013.00	5679.96	530.04	-5659.82	0.00	
12920.00†	90.000	267.877	7013.00	5779.55	526.33	-5759.75	0.00	



Planned Wellpath Report

GOETZEL 31N-30B-M PWP (REV-A.0)

Page 5 of 7



REFERENCE WELLPATH IDENTIFICATION

Operator	SYNERGY RESOURCES CORPORATION	Slot	SLOT#06 GOETZEL 31N-30B-M (1913'FNL & 2446'FEL, SEC.29)
Area	COLORADO	Well	GOETZEL 31N-30B-M
Field	WELD COUNTY (NAD83,TRUE NORTH)	Wellbore	GOETZEL 31N-30B-M PWB
Facility	SEC.29-T06N-R66W		

WELLPATH DATA (160 stations) † = interpolated/extrapolated station

MD [ft]	Inclination [°]	Azimuth [°]	TVD [ft]	Vert Sect [ft]	North [ft]	East [ft]	DLS [°/100ft]	Comments
13020.00†	90.000	267.877	7013.00	5879.15	522.63	-5859.68	0.00	
13120.00†	90.000	267.877	7013.00	5978.74	518.92	-5959.61	0.00	
13220.00†	90.000	267.877	7013.00	6078.34	515.22	-6059.54	0.00	
13320.00†	90.000	267.877	7013.00	6177.93	511.52	-6159.47	0.00	
13420.00†	90.000	267.877	7013.00	6277.52	507.81	-6259.40	0.00	
13520.00†	90.000	267.877	7013.00	6377.12	504.11	-6359.34	0.00	
13620.00†	90.000	267.877	7013.00	6476.71	500.40	-6459.27	0.00	
13720.00†	90.000	267.877	7013.00	6576.31	496.70	-6559.20	0.00	
13820.00†	90.000	267.877	7013.00	6675.90	493.00	-6659.13	0.00	
13920.00†	90.000	267.877	7013.00	6775.50	489.29	-6759.06	0.00	
14020.00†	90.000	267.877	7013.00	6875.09	485.59	-6858.99	0.00	
14120.00†	90.000	267.877	7013.00	6974.69	481.88	-6958.92	0.00	
14220.00†	90.000	267.877	7013.00	7074.28	478.18	-7058.86	0.00	
14320.00†	90.000	267.877	7013.00	7173.87	474.48	-7158.79	0.00	
14420.00†	90.000	267.877	7013.00	7273.47	470.77	-7258.72	0.00	
14520.00†	90.000	267.877	7013.00	7373.06	467.07	-7358.65	0.00	
14620.00†	90.000	267.877	7013.00	7472.66	463.36	-7458.58	0.00	
14720.00†	90.000	267.877	7013.00	7572.25	459.66	-7558.51	0.00	
14820.00†	90.000	267.877	7013.00	7671.85	455.96	-7658.44	0.00	
14920.00†	90.000	267.877	7013.00	7771.44	452.25	-7758.37	0.00	
15020.00†	90.000	267.877	7013.00	7871.04	448.55	-7858.31	0.00	
15120.00†	90.000	267.877	7013.00	7970.63	444.84	-7958.24	0.00	
15220.00†	90.000	267.877	7013.00	8070.22	441.14	-8058.17	0.00	
15320.00†	90.000	267.877	7013.00	8169.82	437.44	-8158.10	0.00	
15367.70	90.000	267.877	7013.00 ²	8217.32	435.67	-8205.76	0.00	End of Tangent

HOLE & CASING SECTIONS

- Ref Wellbore: GOETZEL 31N-30B-M PWB Ref Wellpath: GOETZEL 31N-30B-M PWP (REV-A.0)

String/Diameter	Start MD [ft]	End MD [ft]	Interval [ft]	Start TVD [ft]	End TVD [ft]	Start N/S [ft]	Start E/W [ft]	End N/S [ft]	End E/W [ft]
13.5in Open Hole	20.00	1700.00	1680.00	20.00	1700.00	0.00	0.00	0.00	0.00
9.625in Casing Surface	20.00	1700.00	1680.00	20.00	1700.00	0.00	0.00	0.00	0.00
8.5in Open Hole	1700.00	15367.70	13667.70	1700.00	N/A	0.00	0.00	N/A	N/A



Planned Wellpath Report

GOETZEL 31N-30B-M PWP (REV-A.0)

Page 6 of 7



REFERENCE WELLPATH IDENTIFICATION

Operator	SYNERGY RESOURCES CORPORATION	Slot	SLOT#06 GOETZEL 31N-30B-M (1913'FNL & 2446'FEL, SEC.29)
Area	COLORADO	Well	GOETZEL 31N-30B-M
Field	WELD COUNTY (NAD83,TRUE NORTH)	Wellbore	GOETZEL 31N-30B-M PWB
Facility	SEC.29-T06N-R66W		

TARGETS

Name	MD [ft]	TVD [ft]	North [ft]	East [ft]	Grid East [US ft]	Grid North [US ft]	Latitude	Longitude	Shape
SEC.29-T06N-R66W NORTHERN		0.00	99.86	0.56	3194449.66	1411671.99	40°27'40.817"N	104°48'04.259"W	polygon
SEC.29-T06N-R66W SOUTHERN		0.00	99.86	0.56	3194449.66	1411671.99	40°27'40.817"N	104°48'04.259"W	polygon
SEC.30-T06N-R66W NORTHERN		0.00	99.86	0.56	3194449.66	1411671.99	40°27'40.817"N	104°48'04.259"W	polygon
SEC.30-T06N-R66W SOUTHERN		0.00	99.86	0.56	3194449.66	1411671.99	40°27'40.817"N	104°48'04.259"W	polygon
2) GOETZEL 31N-30B-M BHL REV-1 (1183'FNL & 510'FWL, SEC.30)	15367.70	7013.00	435.67	-8205.76	3186241.26	1411943.10	40°27'44.122"N	104°49'50.426"W	circle
1) GOETZEL 31N-30B-M TOP REV-1 (1178'FNL & 2585'FWL, SEC.29)	7447.28	7013.00	729.04	-290.78	3194153.38	1412298.82	40°27'47.034"N	104°48'08.028"W	circle

SURVEY PROGRAM -

Ref Wellbore: GOETZEL 31N-30B-M PWB Ref Wellpath: GOETZEL 31N-30B-M PWP (REV-A.0)

Start MD [ft]	End MD [ft]	Positional Uncertainty Model	Log Name/Comment	Wellbore
20.00	1700.00	Custom BHI NaviTrak (Standard Rotating) (Rockies 0.03Gt model)		GOETZEL 31N-30B-M PWB
1700.00	15367.70	Custom BHI AutoTrak Curve (Short) (Rockies 0.03Gt model)		GOETZEL 31N-30B-M PWB



Planned Wellpath Report

GOETZEL 31N-30B-M PWP (REV-A.0)

Page 7 of 7



REFERENCE WELLPATH IDENTIFICATION			
Operator	SYNERGY RESOURCES CORPORATION	Slot	SLOT#06 GOETZEL 31N-30B-M (1913'FNL & 2446'FEL, SEC.29)
Area	COLORADO	Well	GOETZEL 31N-30B-M
Field	WELD COUNTY (NAD83,TRUE NORTH)	Wellbore	GOETZEL 31N-30B-M PWB
Facility	SEC.29-T06N-R66W		

DESIGN COMMENTS					
MD [ft]	Inclination [°]	Azimuth [°]	TVD [ft]	Comment	
20.00	0.000	28.136	20.00	Tie On	
1900.00	0.000	28.136	1900.00	End of Tangent	
2399.13	9.983	28.136	2396.61	End of Build	
6391.60	9.983	28.136	6328.63	End of Tangent	
7447.28	90.000	267.877	7013.00	End of 3D Arc	
15367.70	90.000	267.877	7013.00	End of Tangent	