

SYNERGY RESOURCES CORPORATION

Location: COLORADO Slot: SLOT#07 GOETZEL 31C-30-M (1993'FNL & 2446'FEL, SEC.29)
Field: WELD COUNTY (NAD83, TRUE NORTH) Well: GOETZEL 31C-30-M
Facility: SEC.29-T06N-R66W Wellbore: GOETZEL 31C-30-M PWB

Plot reference wellpath is GOETZEL 31C-30-M PWP (REV-A.0)	Grid System: NAD83 / Lambert Colorado SP, Northern Zone (501), US feet
True vertical depths are referenced to PRECISION 462 (20KB) (RKB)	* = Wellpath was transformed from a different geodetic datum
Measured depths are referenced to PRECISION 462 (20KB) (RKB)	North Reference: True north
PRECISION 462 (20KB) (RKB) to Mean Sea Level: 4748 feet	Scale: True distance
Mean Sea Level to Mud line (At Slot: SLOT#07 GOETZEL 31C-30-M (1993'FNL & 2446'FEL, SEC.29)): 0 feet	Depths are in feet
Coordinates are in feet referenced to Slot	Created by: ingmjmr on 2016-11-15
	Database: WA_DEN_Denver_Defn

Location Information

Facility Name				Grid East (US ft)	Grid North (US ft)	Latitude	Longitude
SEC.29-T06N-R66W				3194449.662	1411671.988	40°27'40.817"N	104°48'04.259"W
Slot	Local N (ft)	Local E (ft)		Grid East (US ft)	Grid North (US ft)	Latitude	Longitude
SLOT#07 GOETZEL 31C-30-M (1993'FNL & 2446'FEL, SEC.29)	-180.01	-1.10		3194449.983	1411491.979	40°27'39.038"N	104°48'04.273"W
PRECISION 462 (20KB) (RKB) to Mud line (At Slot: SLOT#07 GOETZEL 31C-30-M (1993'FNL & 2446'FEL, SEC.29))						4748ft	
Mean Sea Level to Mud line (At Slot: SLOT#07 GOETZEL 31C-30-M (1993'FNL & 2446'FEL, SEC.29))						0ft	
PRECISION 462 (20KB) (RKB) to Mean Sea Level						4748ft	

Tie-On Position

MD (ft)	Inc (°)	Az (°)	TVD (ft)	Local N (ft)	Local E (ft)	Grid East (US ft)	Grid North (US ft)	Latitude	Longitude
20.00	0.000	33.144	20.00	0.00	0.00	3194449.98	1411491.98	40°27'39.038"N	104°48'04.273"W

Well Profile Data

Design Comment	MD (ft)	Inc (°)	Az (°)	TVD (ft)	Local N (ft)	Local E (ft)	DLS (°/100ft)	VS (ft)
Tie On	20.00	0.000	33.144	20.00	0.00	0.00	0.00	0.00
End of Tangent	1900.00	0.000	33.144	1900.00	0.00	0.00	0.00	0.00
End of Build	2309.22	8.184	33.144	2307.83	24.43	15.95	2.00	-15.07
End of Tangent	6541.27	8.184	33.144	6496.77	528.88	345.36	0.00	-326.15
End of 3D Arc	7593.64	90.000	267.893	7181.00	585.86	-291.64	9.00	312.48
End of Tangent	15512.10	90.000	267.893	7181.00	294.68	-8204.74	0.00	8210.03

Survey Program

Start MD (ft)	End MD (ft)	Tool	Model	Log Name/Comment	Wellbore
20.00	1700.00	BHI NavTrak	Custom BHI NavTrak (Standard Rotating) (Rockies 0.03Gt model)		GOETZEL 31C-30-M PWB
1700.00	15512.10	BHI AutoTrak Curve	Custom BHI AutoTrak Curve (Short) (Rockies 0.03Gt model)		GOETZEL 31C-30-M PWB

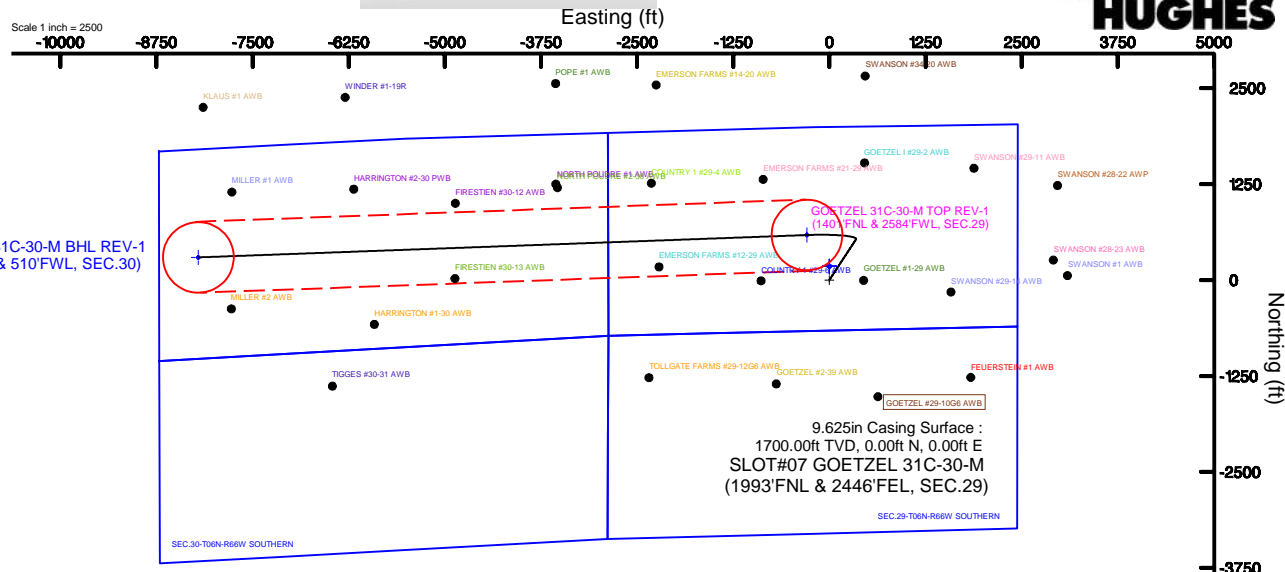
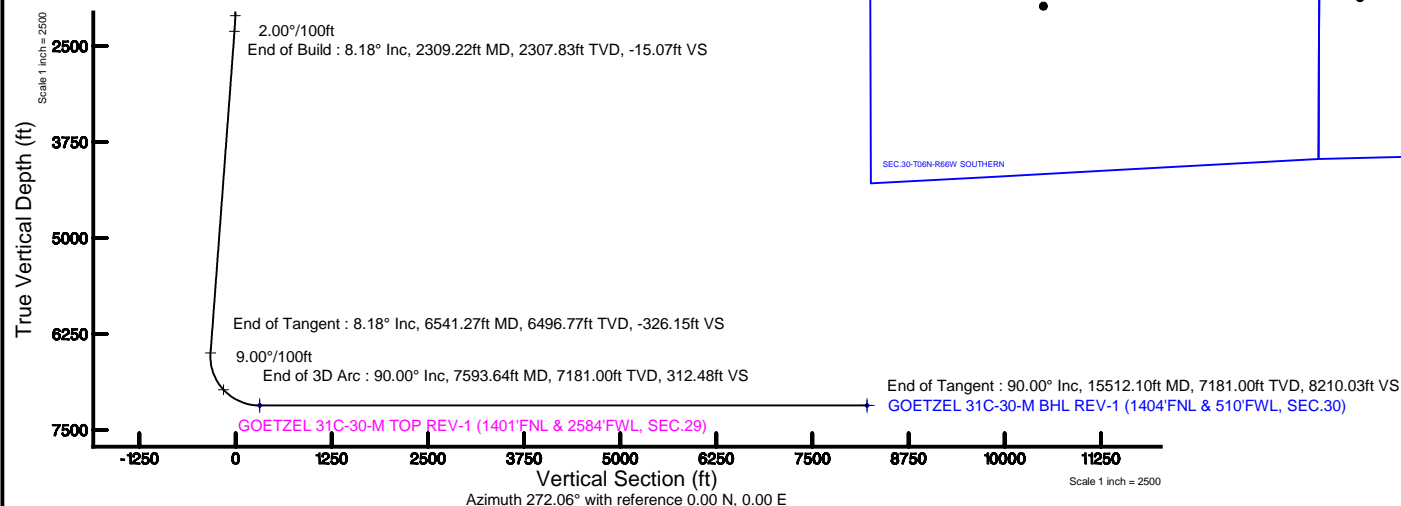
Targets

Name	MD (ft)	TVD (ft)	Local N (ft)	Local E (ft)	Grid East (US ft)	Grid North (US ft)	Latitude	Longitude
SEC.29-T06N-R66W NORTHERN	0.00	180.01	1.10	3194449.66	1411671.99	40°27'40.817"N	104°48'04.259"W	
SEC.29-T06N-R66W SOUTHERN	0.00	180.01	1.10	3194449.66	1411671.99	40°27'40.817"N	104°48'04.259"W	
SEC.30-T06N-R66W NORTHERN	0.00	180.01	1.10	3194449.66	1411671.99	40°27'40.817"N	104°48'04.259"W	
SEC.30-T06N-R66W SOUTHERN	0.00	180.01	1.10	3194449.66	1411671.99	40°27'40.817"N	104°48'04.259"W	
GOETZEL 31C-30-M BHL REV-1 (1404'FNL & 510'FWL, SEC.30)	15512.10	7181.00	294.68	-8204.74	3196243.49	1411721.98	40°27'41.936"N	104°49'50.419"W
GOETZEL 31C-30-M TOP REV-1 (1401'FNL & 2584'FWL, SEC.29)	7593.64	7181.00	585.86	-291.64	3194153.75	1412075.50	40°27'44.827"N	104°48'08.046"W



BGGM (1900.0 to 2018.0) Dip: 66.93° Field: 52529.3 nT
Magnetic North is 8.46 degrees East of True North (at 11/10/2016)

To correct azimuth from Magnetic to True add 8.46 degrees



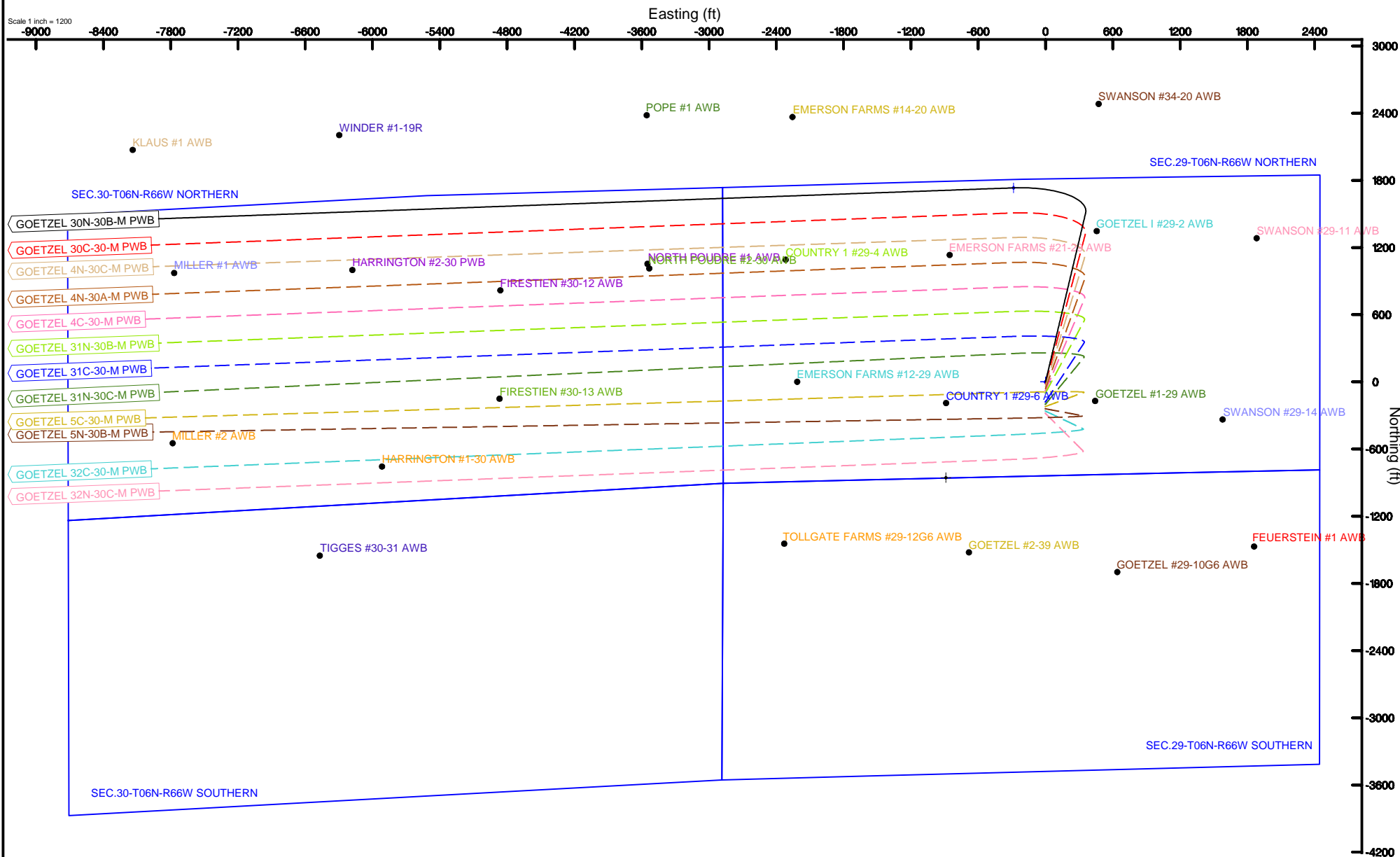
SYNERGY RESOURCES CORPORATION

Location: COLORADO Slot: SLOT#01 GOETZEL 30N-30B-M (1813°FNL & 2445°FEL, SEC.29)
Field: WELD COUNTY (NAD83,TRUE NORTH) Well: GOETZEL 30N-30B-M
Facility: SEC.29-T06N-R66W Wellbore: GOETZEL 30N-30B-M PWB



BGGM (1900.0 to 2018.0) Dip: 66.93° Field: 52529.3 nT
Magnetic North is 8.46 degrees East of True North (at 11/10/2016)

To correct azimuth from Magnetic to True add 8.46 degrees



GOETZEL_31C-30-M_PWP__REV-A.0_.las

~VERSION INFORMATION

VERS. 2.0 : CWLS LOG ASCII STANDARD-VERSION 2.0
 WRAP. NO : ASCII DATA SECTION CONTAINS ONE ROW PER WELLPATH STATION

~WELL INFORMATION

#MNEM	.UNITS	DATA	:DESCRIPTION
#----	.-----	----	:-----
STRT	.ft	0.00	:START MD
STOP	.ft	15512.10	:STOP MD
STEP	.ft	0.0	:STEP (non-uniform increment)
NULL	.	-999.99	:NULL
COMP	.	SYNERGY RESOURCES CORPORATION	:OPERATOR
WELL	.	GOETZEL 31C-30-M	:WELL
FLD	.	WELD COUNTY (NAD83,TRUE NORTH)	:FIELD
LOC	.	COLORADO	:AREA (aka: Location)
CNTY	.	N/A	:COUNTY
STAT	.	N/A	:STATE
CTRY	.	N/A	:COUNTRY
SRVC	.	Baker Hughes	:CONTRACTOR
DATE	.	11/10/2016	:LOG REV DATE
API	.		:API NUMBER

~OTHER INFORMATION

#Software: WellArchitect(R) Version 5.0

#MNEM	.UNITS	DATA	:DESCRIPTION
#----	.-----	----	:-----
WPTYPE	.	PLANNED WELLPATH	:WELLPATH TYPE
FACILITY	.	SEC.29-T06N-R66W	:FACILITY
SLOT	.	SLOT#07 GOETZEL 31C-30-M (1993'FNL & 2446'FEL, SEC.29):SLOT	:SLOT
WELLBORE	.	GOETZEL 31C-30-M PWB	:WELLBORE
WELLPATH	.	GOETZEL 31C-30-M PWP (REV-A.0)	:WELLPATH
MDREFPT	.	PRECISION 462 (20'KB) (RKB)	:MD REFERENCE POINT
TVDREFPT	.	PRECISION 462 (20'KB) (RKB)	:TVD REFERENCE POINT
LCLREFPT	.	SLOT	:LOCAL COORDINATE REFERENCE PT
VSAZIMUTH	.deg	272.06	:VERTICAL SECTION AZIMUTH
VSORIGN	.ft	0.00	:VERTICAL SECTION ORIGIN NORTH
VSORIGE	.ft	0.00	:VERTICAL SECTION ORIGIN EAST

~CURVE (WELLPATH) INFORMATION

#MNEM	.UNITS	:DESCRIPTION
#----	.-----	:-----
DEPT	.ft	:MEASURED DEPTH
INC	.deg	:INCLINATION
AZI	.deg	:AZIMUTH
TVD	.ft	:TRUE VERTICAL DEPTH
SECT	.ft	:CROSS SECTION (CURTAIN/VERTICAL)
LOCALN	.ft	:LOCAL NORTH
LOCALE	.ft	:LOCAL EAST

GOETZEL_31C-30-M_PWP__REV-A.0_.las

LAT .deg :LATITUDE
 LONG .deg :LONGITUDE
 DLS .deg/100ft :DOGLEG SEVERITY

~ASCII DATA

0.00	0.00	33.14	0.00	0.00	0.00	0.00	40.4608439	-104.8011869	0.00
20.00	0.00	33.14	20.00	0.00	0.00	0.00	40.4608439	-104.8011869	0.00
120.00	0.00	33.14	120.00	0.00	0.00	0.00	40.4608439	-104.8011869	0.00
220.00	0.00	33.14	220.00	0.00	0.00	0.00	40.4608439	-104.8011869	0.00
320.00	0.00	33.14	320.00	0.00	0.00	0.00	40.4608439	-104.8011869	0.00
420.00	0.00	33.14	420.00	0.00	0.00	0.00	40.4608439	-104.8011869	0.00
520.00	0.00	33.14	520.00	0.00	0.00	0.00	40.4608439	-104.8011869	0.00
620.00	0.00	33.14	620.00	0.00	0.00	0.00	40.4608439	-104.8011869	0.00
720.00	0.00	33.14	720.00	0.00	0.00	0.00	40.4608439	-104.8011869	0.00
820.00	0.00	33.14	820.00	0.00	0.00	0.00	40.4608439	-104.8011869	0.00
920.00	0.00	33.14	920.00	0.00	0.00	0.00	40.4608439	-104.8011869	0.00
1020.00	0.00	33.14	1020.00	0.00	0.00	0.00	40.4608439	-104.8011869	0.00
1120.00	0.00	33.14	1120.00	0.00	0.00	0.00	40.4608439	-104.8011869	0.00
1220.00	0.00	33.14	1220.00	0.00	0.00	0.00	40.4608439	-104.8011869	0.00
1320.00	0.00	33.14	1320.00	0.00	0.00	0.00	40.4608439	-104.8011869	0.00
1420.00	0.00	33.14	1420.00	0.00	0.00	0.00	40.4608439	-104.8011869	0.00
1520.00	0.00	33.14	1520.00	0.00	0.00	0.00	40.4608439	-104.8011869	0.00
1620.00	0.00	33.14	1620.00	0.00	0.00	0.00	40.4608439	-104.8011869	0.00
1720.00	0.00	33.14	1720.00	0.00	0.00	0.00	40.4608439	-104.8011869	0.00
1820.00	0.00	33.14	1820.00	0.00	0.00	0.00	40.4608439	-104.8011869	0.00
1900.00	0.00	33.14	1900.00	0.00	0.00	0.00	40.4608439	-104.8011869	0.00
1920.00	0.40	33.14	1920.00	-0.04	0.06	0.04	40.4608440	-104.8011868	2.00
2020.00	2.40	33.14	2019.96	-1.30	2.10	1.37	40.4608497	-104.8011820	2.00
2120.00	4.40	33.14	2119.78	-4.36	7.07	4.62	40.4608633	-104.8011704	2.00
2220.00	6.40	33.14	2219.33	-9.22	14.95	9.76	40.4608849	-104.8011519	2.00
2309.22	8.18	33.14	2307.83	-15.07	24.43	15.95	40.4609109	-104.8011296	2.00
2320.00	8.18	33.14	2318.50	-15.86	25.72	16.79	40.4609145	-104.8011266	0.00
2420.00	8.18	33.14	2417.48	-23.21	37.64	24.58	40.4609472	-104.8010986	0.00
2520.00	8.18	33.14	2516.46	-30.56	49.56	32.36	40.4609799	-104.8010707	0.00
2620.00	8.18	33.14	2615.44	-37.91	61.47	40.14	40.4610126	-104.8010427	0.00
2720.00	8.18	33.14	2714.43	-45.26	73.39	47.93	40.4610453	-104.8010147	0.00
2820.00	8.18	33.14	2813.41	-52.61	85.31	55.71	40.4610781	-104.8009867	0.00
2920.00	8.18	33.14	2912.39	-59.96	97.23	63.49	40.4611108	-104.8009588	0.00
3020.00	8.18	33.14	3011.37	-67.31	109.15	71.28	40.4611435	-104.8009308	0.00
3120.00	8.18	33.14	3110.35	-74.66	121.07	79.06	40.4611762	-104.8009028	0.00
3220.00	8.18	33.14	3209.33	-82.01	132.99	86.84	40.4612089	-104.8008749	0.00
3320.00	8.18	33.14	3308.31	-89.37	144.91	94.63	40.4612417	-104.8008469	0.00
3420.00	8.18	33.14	3407.30	-96.72	156.83	102.41	40.4612744	-104.8008189	0.00
3520.00	8.18	33.14	3506.28	-104.07	168.75	110.19	40.4613071	-104.8007909	0.00
3620.00	8.18	33.14	3605.26	-111.42	180.67	117.98	40.4613398	-104.8007630	0.00
3720.00	8.18	33.14	3704.24	-118.77	192.59	125.76	40.4613725	-104.8007350	0.00
3820.00	8.18	33.14	3803.22	-126.12	204.51	133.55	40.4614052	-104.8007070	0.00
3920.00	8.18	33.14	3902.20	-133.47	216.43	141.33	40.4614380	-104.8006791	0.00

GOETZEL_31C-30-M_PWP__REV-A.0_.las									
4020.00	8.18	33.14	4001.19	-140.82	228.35	149.11	40.4614707	-104.8006511	0.00
4120.00	8.18	33.14	4100.17	-148.17	240.27	156.90	40.4615034	-104.8006231	0.00
4220.00	8.18	33.14	4199.15	-155.52	252.19	164.68	40.4615361	-104.8005951	0.00
4320.00	8.18	33.14	4298.13	-162.87	264.11	172.46	40.4615688	-104.8005672	0.00
4420.00	8.18	33.14	4397.11	-170.22	276.03	180.25	40.4616016	-104.8005392	0.00
4520.00	8.18	33.14	4496.09	-177.57	287.95	188.03	40.4616343	-104.8005112	0.00
4620.00	8.18	33.14	4595.07	-184.92	299.87	195.81	40.4616670	-104.8004833	0.00
4720.00	8.18	33.14	4694.06	-192.27	311.79	203.60	40.4616997	-104.8004553	0.00
4820.00	8.18	33.14	4793.04	-199.63	323.71	211.38	40.4617324	-104.8004273	0.00
4920.00	8.18	33.14	4892.02	-206.98	335.63	219.16	40.4617652	-104.8003993	0.00
5020.00	8.18	33.14	4991.00	-214.33	347.55	226.95	40.4617979	-104.8003714	0.00
5120.00	8.18	33.14	5089.98	-221.68	359.47	234.73	40.4618306	-104.8003434	0.00
5220.00	8.18	33.14	5188.96	-229.03	371.39	242.51	40.4618633	-104.8003154	0.00
5320.00	8.18	33.14	5287.94	-236.38	383.31	250.30	40.4618960	-104.8002875	0.00
5420.00	8.18	33.14	5386.93	-243.73	395.23	258.08	40.4619287	-104.8002595	0.00
5520.00	8.18	33.14	5485.91	-251.08	407.15	265.87	40.4619615	-104.8002315	0.00
5620.00	8.18	33.14	5584.89	-258.43	419.07	273.65	40.4619942	-104.8002035	0.00
5720.00	8.18	33.14	5683.87	-265.78	430.99	281.43	40.4620269	-104.8001756	0.00
5820.00	8.18	33.14	5782.85	-273.13	442.91	289.22	40.4620596	-104.8001476	0.00
5920.00	8.18	33.14	5881.83	-280.48	454.83	297.00	40.4620923	-104.8001196	0.00
6020.00	8.18	33.14	5980.81	-287.83	466.75	304.78	40.4621251	-104.8000916	0.00
6120.00	8.18	33.14	6079.80	-295.18	478.67	312.57	40.4621578	-104.8000637	0.00
6220.00	8.18	33.14	6178.78	-302.54	490.59	320.35	40.4621905	-104.8000357	0.00
6320.00	8.18	33.14	6277.76	-309.89	502.51	328.13	40.4622232	-104.8000077	0.00
6420.00	8.18	33.14	6376.74	-317.24	514.43	335.92	40.4622559	-104.7999798	0.00
6520.00	8.18	33.14	6475.72	-324.59	526.35	343.70	40.4622886	-104.7999518	0.00
6541.27	8.18	33.14	6496.77	-326.15	528.88	345.36	40.4622956	-104.7999458	0.00
6620.00	7.11	338.34	6574.90	-327.09	538.11	346.62	40.4623209	-104.7999413	9.00
6720.00	13.18	298.00	6673.40	-314.32	549.24	334.25	40.4623515	-104.7999857	9.00
6820.00	21.40	285.33	6768.84	-286.26	559.43	306.54	40.4623795	-104.8000853	9.00
6920.00	30.06	279.60	6858.85	-243.59	568.45	264.16	40.4624042	-104.8002376	9.00
7020.00	38.86	276.27	6941.23	-187.35	576.07	208.16	40.4624251	-104.8004389	9.00
7120.00	47.73	274.02	7013.94	-118.95	582.11	139.93	40.4624417	-104.8006841	9.00
7220.00	56.63	272.33	7075.19	-40.05	586.41	61.13	40.4624535	-104.8009672	9.00
7320.00	65.55	270.95	7123.49	47.40	588.87	-26.28	40.4624603	-104.8012814	9.00
7420.00	74.48	269.76	7157.63	141.24	589.43	-120.16	40.4624618	-104.8016188	9.00
7520.00	83.42	268.67	7176.78	239.16	588.07	-218.20	40.4624581	-104.8019711	9.00
7593.64	90.00	267.89	7181.00	312.48	585.86	-291.64	40.4624520	-104.8022350	9.00
7620.00	90.00	267.89	7181.00	338.77	584.89	-317.98	40.4624493	-104.8023297	0.00
7720.00	90.00	267.89	7181.00	438.51	581.22	-417.91	40.4624392	-104.8026888	0.00
7820.00	90.00	267.89	7181.00	538.24	577.54	-517.85	40.4624291	-104.8030479	0.00
7920.00	90.00	267.89	7181.00	637.98	573.86	-617.78	40.4624190	-104.8034071	0.00
8020.00	90.00	267.89	7181.00	737.71	570.18	-717.71	40.4624089	-104.8037662	0.00
8120.00	90.00	267.89	7181.00	837.45	566.51	-817.64	40.4623988	-104.8041253	0.00
8220.00	90.00	267.89	7181.00	937.19	562.83	-917.58	40.4623887	-104.8044844	0.00
8320.00	90.00	267.89	7181.00	1036.92	559.15	-1017.51	40.4623786	-104.8048436	0.00
8420.00	90.00	267.89	7181.00	1136.66	555.47	-1117.44	40.4623685	-104.8052027	0.00
8520.00	90.00	267.89	7181.00	1236.39	551.80	-1217.37	40.4623584	-104.8055618	0.00

GOETZEL_31C-30-M_PWP__REV-A.0_.las									
8620.00	90.00	267.89	7181.00	1336.13	548.12	-1317.31	40.4623483	-104.8059209	0.00
8720.00	90.00	267.89	7181.00	1435.87	544.44	-1417.24	40.4623382	-104.8062801	0.00
8820.00	90.00	267.89	7181.00	1535.60	540.77	-1517.17	40.4623281	-104.8066392	0.00
8920.00	90.00	267.89	7181.00	1635.34	537.09	-1617.10	40.4623180	-104.8069983	0.00
9020.00	90.00	267.89	7181.00	1735.07	533.41	-1717.03	40.4623079	-104.8073574	0.00
9120.00	90.00	267.89	7181.00	1834.81	529.73	-1816.97	40.4622978	-104.8077166	0.00
9220.00	90.00	267.89	7181.00	1934.55	526.06	-1916.90	40.4622876	-104.8080757	0.00
9320.00	90.00	267.89	7181.00	2034.28	522.38	-2016.83	40.4622775	-104.8084348	0.00
9420.00	90.00	267.89	7181.00	2134.02	518.70	-2116.76	40.4622674	-104.8087939	0.00
9520.00	90.00	267.89	7181.00	2233.75	515.02	-2216.70	40.4622573	-104.8091531	0.00
9620.00	90.00	267.89	7181.00	2333.49	511.35	-2316.63	40.4622472	-104.8095122	0.00
9720.00	90.00	267.89	7181.00	2433.23	507.67	-2416.56	40.4622371	-104.8098713	0.00
9820.00	90.00	267.89	7181.00	2532.96	503.99	-2516.49	40.4622269	-104.8102304	0.00
9920.00	90.00	267.89	7181.00	2632.70	500.32	-2616.43	40.4622168	-104.8105896	0.00
10020.00	90.00	267.89	7181.00	2732.43	496.64	-2716.36	40.4622067	-104.8109487	0.00
10120.00	90.00	267.89	7181.00	2832.17	492.96	-2816.29	40.4621966	-104.8113078	0.00
10220.00	90.00	267.89	7181.00	2931.91	489.28	-2916.22	40.4621864	-104.8116669	0.00
10320.00	90.00	267.89	7181.00	3031.64	485.61	-3016.16	40.4621763	-104.8120261	0.00
10420.00	90.00	267.89	7181.00	3131.38	481.93	-3116.09	40.4621662	-104.8123852	0.00
10520.00	90.00	267.89	7181.00	3231.11	478.25	-3216.02	40.4621561	-104.8127443	0.00
10620.00	90.00	267.89	7181.00	3330.85	474.57	-3315.95	40.4621459	-104.8131034	0.00
10720.00	90.00	267.89	7181.00	3430.59	470.90	-3415.89	40.4621358	-104.8134626	0.00
10820.00	90.00	267.89	7181.00	3530.32	467.22	-3515.82	40.4621257	-104.8138217	0.00
10920.00	90.00	267.89	7181.00	3630.06	463.54	-3615.75	40.4621155	-104.8141808	0.00
11020.00	90.00	267.89	7181.00	3729.79	459.87	-3715.68	40.4621054	-104.8145399	0.00
11120.00	90.00	267.89	7181.00	3829.53	456.19	-3815.61	40.4620953	-104.8148991	0.00
11220.00	90.00	267.89	7181.00	3929.27	452.51	-3915.55	40.4620851	-104.8152582	0.00
11320.00	90.00	267.89	7181.00	4029.00	448.83	-4015.48	40.4620750	-104.8156173	0.00
11420.00	90.00	267.89	7181.00	4128.74	445.16	-4115.41	40.4620648	-104.8159764	0.00
11520.00	90.00	267.89	7181.00	4228.47	441.48	-4215.34	40.4620547	-104.8163356	0.00
11620.00	90.00	267.89	7181.00	4328.21	437.80	-4315.28	40.4620446	-104.8166947	0.00
11720.00	90.00	267.89	7181.00	4427.95	434.12	-4415.21	40.4620344	-104.8170538	0.00
11820.00	90.00	267.89	7181.00	4527.68	430.45	-4515.14	40.4620243	-104.8174129	0.00
11920.00	90.00	267.89	7181.00	4627.42	426.77	-4615.07	40.4620141	-104.8177720	0.00
12020.00	90.00	267.89	7181.00	4727.15	423.09	-4715.01	40.4620040	-104.8181312	0.00
12120.00	90.00	267.89	7181.00	4826.89	419.42	-4814.94	40.4619938	-104.8184903	0.00
12220.00	90.00	267.89	7181.00	4926.63	415.74	-4914.87	40.4619837	-104.8188494	0.00
12320.00	90.00	267.89	7181.00	5026.36	412.06	-5014.80	40.4619735	-104.8192085	0.00
12420.00	90.00	267.89	7181.00	5126.10	408.38	-5114.74	40.4619634	-104.8195677	0.00
12520.00	90.00	267.89	7181.00	5225.83	404.71	-5214.67	40.4619532	-104.8199268	0.00
12620.00	90.00	267.89	7181.00	5325.57	401.03	-5314.60	40.4619431	-104.8202859	0.00
12720.00	90.00	267.89	7181.00	5425.31	397.35	-5414.53	40.4619329	-104.8206450	0.00
12820.00	90.00	267.89	7181.00	5525.04	393.67	-5514.46	40.4619228	-104.8210041	0.00
12920.00	90.00	267.89	7181.00	5624.78	390.00	-5614.40	40.4619126	-104.8213633	0.00
13020.00	90.00	267.89	7181.00	5724.51	386.32	-5714.33	40.4619025	-104.8217224	0.00
13120.00	90.00	267.89	7181.00	5824.25	382.64	-5814.26	40.4618923	-104.8220815	0.00
13220.00	90.00	267.89	7181.00	5923.99	378.97	-5914.19	40.4618822	-104.8224406	0.00
13320.00	90.00	267.89	7181.00	6023.72	375.29	-6014.13	40.4618720	-104.8227997	0.00

GOETZEL_31C-30-M_PWP__REV-A.0_.las									
13420.00	90.00	267.89	7181.00	6123.46	371.61	-6114.06	40.4618618	-104.8231589	0.00
13520.00	90.00	267.89	7181.00	6223.19	367.93	-6213.99	40.4618517	-104.8235180	0.00
13620.00	90.00	267.89	7181.00	6322.93	364.26	-6313.92	40.4618415	-104.8238771	0.00
13720.00	90.00	267.89	7181.00	6422.67	360.58	-6413.86	40.4618313	-104.8242362	0.00
13820.00	90.00	267.89	7181.00	6522.40	356.90	-6513.79	40.4618212	-104.8245953	0.00
13920.00	90.00	267.89	7181.00	6622.14	353.22	-6613.72	40.4618110	-104.8249545	0.00
14020.00	90.00	267.89	7181.00	6721.87	349.55	-6713.65	40.4618008	-104.8253136	0.00
14120.00	90.00	267.89	7181.00	6821.61	345.87	-6813.59	40.4617907	-104.8256727	0.00
14220.00	90.00	267.89	7181.00	6921.35	342.19	-6913.52	40.4617805	-104.8260318	0.00
14320.00	90.00	267.89	7181.00	7021.08	338.52	-7013.45	40.4617703	-104.8263910	0.00
14420.00	90.00	267.89	7181.00	7120.82	334.84	-7113.38	40.4617602	-104.8267501	0.00
14520.00	90.00	267.89	7181.00	7220.55	331.16	-7213.32	40.4617500	-104.8271092	0.00
14620.00	90.00	267.89	7181.00	7320.29	327.48	-7313.25	40.4617398	-104.8274683	0.00
14720.00	90.00	267.89	7181.00	7420.03	323.81	-7413.18	40.4617296	-104.8278274	0.00
14820.00	90.00	267.89	7181.00	7519.76	320.13	-7513.11	40.4617195	-104.8281865	0.00
14920.00	90.00	267.89	7181.00	7619.50	316.45	-7613.04	40.4617093	-104.8285457	0.00
15020.00	90.00	267.89	7181.00	7719.23	312.77	-7712.98	40.4616991	-104.8289048	0.00
15120.00	90.00	267.89	7181.00	7818.97	309.10	-7812.91	40.4616889	-104.8292639	0.00
15220.00	90.00	267.89	7181.00	7918.71	305.42	-7912.84	40.4616787	-104.8296230	0.00
15320.00	90.00	267.89	7181.00	8018.44	301.74	-8012.77	40.4616686	-104.8299821	0.00
15420.00	90.00	267.89	7181.00	8118.18	298.07	-8112.71	40.4616584	-104.8303413	0.00
15512.10	90.00	267.89	7181.00	8210.03	294.68	-8204.74	40.4616490	-104.8306720	0.00



Planned Wellpath Report

GOETZEL 31C-30-M PWP (REV-A.0)

Page 1 of 7



REFERENCE WELLPATH IDENTIFICATION

Operator	SYNERGY RESOURCES CORPORATION	Slot	SLOT#07 GOETZEL 31C-30-M (1993'FNL & 2446'FEL, SEC.29)
Area	COLORADO	Well	GOETZEL 31C-30-M
Field	WELD COUNTY (NAD83,TRUE NORTH)	Wellbore	GOETZEL 31C-30-M PWB
Facility	SEC.29-T06N-R66W		

REPORT SETUP INFORMATION

Projection System	NAD83 / Lambert Colorado SP, Northern Zone (501), US feet	Software System	WellArchitect® 5.0
North Reference	True	User	Ingmjmr
Scale	0.999964	Report Generated	11/15/2016 at 10:06:18 AM
Convergence at slot	0.46° East	Database/Source file	WA_DEN_Denver_Defn/GOETZEL_31C-30-M_PWP_REV-A.0_.xml

WELLPATH LOCATION

	Local coordinates		Grid coordinates		Geographic coordinates	
	North[ft]	East[ft]	Easting[US ft]	Northing[US ft]	Latitude	Longitude
Slot Location	-180.01	-1.10	3194449.98	1411491.98	40°27'39.038"N	104°48'04.273"W
Facility Reference Pt			3194449.66	1411671.99	40°27'40.817"N	104°48'04.259"W
Field Reference Pt			3171284.48	1426358.81	40°30'07.643"N	104°53'02.634"W

WELLPATH DATUM

Calculation method	Minimum curvature	PRECISION 462 (20'KB) (RKB) to Facility Vertical Datum	4748.00ft
Horizontal Reference Pt	Slot	PRECISION 462 (20'KB) (RKB) to Mean Sea Level	4748.00ft
Vertical Reference Pt	PRECISION 462 (20'KB) (RKB)	PRECISION 462 (20'KB) (RKB) to Mud Line at Slot (SLOT#07 GOETZEL 31C-30-M (1993'FNL & 2446'FEL, SEC.29))	4748.00ft
MD Reference Pt	PRECISION 462 (20'KB) (RKB)	Section Origin	N 0.00, E 0.00 ft
Field Vertical Reference	Mean Sea Level	Section Azimuth	272.06°



Planned Wellpath Report

GOETZEL 31C-30-M PWP (REV-A.0)

Page 2 of 7



REFERENCE WELLPATH IDENTIFICATION

Operator	SYNERGY RESOURCES CORPORATION	Slot	SLOT#07 GOETZEL 31C-30-M (1993'FNL & 2446'FEL, SEC.29)
Area	COLORADO	Well	GOETZEL 31C-30-M
Field	WELD COUNTY (NAD83,TRUE NORTH)	Wellbore	GOETZEL 31C-30-M PWB
Facility	SEC.29-T06N-R66W		

WELLPATH DATA (161 stations) † = interpolated/extrapolated station

MD [ft]	Inclination [°]	Azimuth [°]	TVD [ft]	Vert Sect [ft]	North [ft]	East [ft]	DLS [°/100ft]	Comments
0.00†	0.000	33.144	0.00	0.00	0.00	0.00	0.00	
20.00	0.000	33.144	20.00	0.00	0.00	0.00	0.00	Tie On
120.00†	0.000	33.144	120.00	0.00	0.00	0.00	0.00	
220.00†	0.000	33.144	220.00	0.00	0.00	0.00	0.00	
320.00†	0.000	33.144	320.00	0.00	0.00	0.00	0.00	
420.00†	0.000	33.144	420.00	0.00	0.00	0.00	0.00	
520.00†	0.000	33.144	520.00	0.00	0.00	0.00	0.00	
620.00†	0.000	33.144	620.00	0.00	0.00	0.00	0.00	
720.00†	0.000	33.144	720.00	0.00	0.00	0.00	0.00	
820.00†	0.000	33.144	820.00	0.00	0.00	0.00	0.00	
920.00†	0.000	33.144	920.00	0.00	0.00	0.00	0.00	
1020.00†	0.000	33.144	1020.00	0.00	0.00	0.00	0.00	
1120.00†	0.000	33.144	1120.00	0.00	0.00	0.00	0.00	
1220.00†	0.000	33.144	1220.00	0.00	0.00	0.00	0.00	
1320.00†	0.000	33.144	1320.00	0.00	0.00	0.00	0.00	
1420.00†	0.000	33.144	1420.00	0.00	0.00	0.00	0.00	
1520.00†	0.000	33.144	1520.00	0.00	0.00	0.00	0.00	
1620.00†	0.000	33.144	1620.00	0.00	0.00	0.00	0.00	
1720.00†	0.000	33.144	1720.00	0.00	0.00	0.00	0.00	
1820.00†	0.000	33.144	1820.00	0.00	0.00	0.00	0.00	
1900.00	0.000	33.144	1900.00	0.00	0.00	0.00	0.00	End of Tangent
1920.00†	0.400	33.144	1920.00	-0.04	0.06	0.04	2.00	
2020.00†	2.400	33.144	2019.96	-1.30	2.10	1.37	2.00	
2120.00†	4.400	33.144	2119.78	-4.36	7.07	4.62	2.00	
2220.00†	6.400	33.144	2219.33	-9.22	14.95	9.76	2.00	
2309.22	8.184	33.144	2307.83	-15.07	24.43	15.95	2.00	End of Build
2320.00†	8.184	33.144	2318.50	-15.86	25.72	16.79	0.00	
2420.00†	8.184	33.144	2417.48	-23.21	37.64	24.58	0.00	
2520.00†	8.184	33.144	2516.46	-30.56	49.56	32.36	0.00	
2620.00†	8.184	33.144	2615.44	-37.91	61.47	40.14	0.00	
2720.00†	8.184	33.144	2714.43	-45.26	73.39	47.93	0.00	
2820.00†	8.184	33.144	2813.41	-52.61	85.31	55.71	0.00	
2920.00†	8.184	33.144	2912.39	-59.96	97.23	63.49	0.00	
3020.00†	8.184	33.144	3011.37	-67.31	109.15	71.28	0.00	
3120.00†	8.184	33.144	3110.35	-74.66	121.07	79.06	0.00	
3220.00†	8.184	33.144	3209.33	-82.01	132.99	86.84	0.00	
3320.00†	8.184	33.144	3308.31	-89.37	144.91	94.63	0.00	
3420.00†	8.184	33.144	3407.30	-96.72	156.83	102.41	0.00	
3520.00†	8.184	33.144	3506.28	-104.07	168.75	110.19	0.00	
3620.00†	8.184	33.144	3605.26	-111.42	180.67	117.98	0.00	
3720.00†	8.184	33.144	3704.24	-118.77	192.59	125.76	0.00	
3820.00†	8.184	33.144	3803.22	-126.12	204.51	133.55	0.00	
3920.00†	8.184	33.144	3902.20	-133.47	216.43	141.33	0.00	
4020.00†	8.184	33.144	4001.19	-140.82	228.35	149.11	0.00	
4120.00†	8.184	33.144	4100.17	-148.17	240.27	156.90	0.00	



Planned Wellpath Report

GOETZEL 31C-30-M PWP (REV-A.0)

Page 3 of 7



REFERENCE WELLPATH IDENTIFICATION

Operator	SYNERGY RESOURCES CORPORATION	Slot	SLOT#07 GOETZEL 31C-30-M (1993'FNL & 2446'FEL, SEC.29)
Area	COLORADO	Well	GOETZEL 31C-30-M
Field	WELD COUNTY (NAD83,TRUE NORTH)	Wellbore	GOETZEL 31C-30-M PWB
Facility	SEC.29-T06N-R66W		

WELLPATH DATA (161 stations) † = interpolated/extrapolated station

MD [ft]	Inclination [°]	Azimuth [°]	TVD [ft]	Vert Sect [ft]	North [ft]	East [ft]	DLS [°/100ft]	Comments
4220.00†	8.184	33.144	4199.15	-155.52	252.19	164.68	0.00	
4320.00†	8.184	33.144	4298.13	-162.87	264.11	172.46	0.00	
4420.00†	8.184	33.144	4397.11	-170.22	276.03	180.25	0.00	
4520.00†	8.184	33.144	4496.09	-177.57	287.95	188.03	0.00	
4620.00†	8.184	33.144	4595.07	-184.92	299.87	195.81	0.00	
4720.00†	8.184	33.144	4694.06	-192.27	311.79	203.60	0.00	
4820.00†	8.184	33.144	4793.04	-199.63	323.71	211.38	0.00	
4920.00†	8.184	33.144	4892.02	-206.98	335.63	219.16	0.00	
5020.00†	8.184	33.144	4991.00	-214.33	347.55	226.95	0.00	
5120.00†	8.184	33.144	5089.98	-221.68	359.47	234.73	0.00	
5220.00†	8.184	33.144	5188.96	-229.03	371.39	242.51	0.00	
5320.00†	8.184	33.144	5287.94	-236.38	383.31	250.30	0.00	
5420.00†	8.184	33.144	5386.93	-243.73	395.23	258.08	0.00	
5520.00†	8.184	33.144	5485.91	-251.08	407.15	265.87	0.00	
5620.00†	8.184	33.144	5584.89	-258.43	419.07	273.65	0.00	
5720.00†	8.184	33.144	5683.87	-265.78	430.99	281.43	0.00	
5820.00†	8.184	33.144	5782.85	-273.13	442.91	289.22	0.00	
5920.00†	8.184	33.144	5881.83	-280.48	454.83	297.00	0.00	
6020.00†	8.184	33.144	5980.81	-287.83	466.75	304.78	0.00	
6120.00†	8.184	33.144	6079.80	-295.18	478.67	312.57	0.00	
6220.00†	8.184	33.144	6178.78	-302.54	490.59	320.35	0.00	
6320.00†	8.184	33.144	6277.76	-309.89	502.51	328.13	0.00	
6420.00†	8.184	33.144	6376.74	-317.24	514.43	335.92	0.00	
6520.00†	8.184	33.144	6475.72	-324.59	526.35	343.70	0.00	
6541.27	8.184	33.144	6496.77	-326.15	528.88	345.36	0.00	End of Tangent
6620.00†	7.105	338.337	6574.90	-327.09	538.11	346.62	9.00	
6720.00†	13.177	298.004	6673.40	-314.32	549.24	334.25	9.00	
6820.00†	21.401	285.331	6768.84	-286.26	559.43	306.54	9.00	
6920.00†	30.060	279.601	6858.85	-243.59	568.45	264.16	9.00	
7020.00†	38.864	276.273	6941.23	-187.35	576.07	208.16	9.00	
7120.00†	47.732	274.021	7013.94	-118.95	582.11	139.93	9.00	
7220.00†	56.632	272.329	7075.19	-40.05	586.41	61.13	9.00	
7320.00†	65.552	270.954	7123.49	47.40	588.87	-26.28	9.00	
7420.00†	74.482	269.761	7157.63	141.24	589.43	-120.16	9.00	
7520.00†	83.418	268.669	7176.78	239.16	588.07	-218.20	9.00	
7593.64	90.000	267.893	7181.00 ¹	312.48	585.86	-291.64	9.00	End of 3D Arc
7620.00†	90.000	267.893	7181.00	338.77	584.89	-317.98	0.00	
7720.00†	90.000	267.893	7181.00	438.51	581.22	-417.91	0.00	
7820.00†	90.000	267.893	7181.00	538.24	577.54	-517.85	0.00	
7920.00†	90.000	267.893	7181.00	637.98	573.86	-617.78	0.00	
8020.00†	90.000	267.893	7181.00	737.71	570.18	-717.71	0.00	
8120.00†	90.000	267.893	7181.00	837.45	566.51	-817.64	0.00	
8220.00†	90.000	267.893	7181.00	937.19	562.83	-917.58	0.00	
8320.00†	90.000	267.893	7181.00	1036.92	559.15	-1017.51	0.00	
8420.00†	90.000	267.893	7181.00	1136.66	555.47	-1117.44	0.00	



Planned Wellpath Report

GOETZEL 31C-30-M PWP (REV-A.0)

Page 4 of 7



REFERENCE WELLPATH IDENTIFICATION

Operator	SYNERGY RESOURCES CORPORATION	Slot	SLOT#07 GOETZEL 31C-30-M (1993'FNL & 2446'FEL, SEC.29)
Area	COLORADO	Well	GOETZEL 31C-30-M
Field	WELD COUNTY (NAD83,TRUE NORTH)	Wellbore	GOETZEL 31C-30-M PWB
Facility	SEC.29-T06N-R66W		

WELLPATH DATA (161 stations) † = interpolated/extrapolated station

MD [ft]	Inclination [°]	Azimuth [°]	TVD [ft]	Vert Sect [ft]	North [ft]	East [ft]	DLS [°/100ft]	Comments
8520.00†	90.000	267.893	7181.00	1236.39	551.80	-1217.37	0.00	
8620.00†	90.000	267.893	7181.00	1336.13	548.12	-1317.31	0.00	
8720.00†	90.000	267.893	7181.00	1435.87	544.44	-1417.24	0.00	
8820.00†	90.000	267.893	7181.00	1535.60	540.77	-1517.17	0.00	
8920.00†	90.000	267.893	7181.00	1635.34	537.09	-1617.10	0.00	
9020.00†	90.000	267.893	7181.00	1735.07	533.41	-1717.03	0.00	
9120.00†	90.000	267.893	7181.00	1834.81	529.73	-1816.97	0.00	
9220.00†	90.000	267.893	7181.00	1934.55	526.06	-1916.90	0.00	
9320.00†	90.000	267.893	7181.00	2034.28	522.38	-2016.83	0.00	
9420.00†	90.000	267.893	7181.00	2134.02	518.70	-2116.76	0.00	
9520.00†	90.000	267.893	7181.00	2233.75	515.02	-2216.70	0.00	
9620.00†	90.000	267.893	7181.00	2333.49	511.35	-2316.63	0.00	
9720.00†	90.000	267.893	7181.00	2433.23	507.67	-2416.56	0.00	
9820.00†	90.000	267.893	7181.00	2532.96	503.99	-2516.49	0.00	
9920.00†	90.000	267.893	7181.00	2632.70	500.32	-2616.43	0.00	
10020.00†	90.000	267.893	7181.00	2732.43	496.64	-2716.36	0.00	
10120.00†	90.000	267.893	7181.00	2832.17	492.96	-2816.29	0.00	
10220.00†	90.000	267.893	7181.00	2931.91	489.28	-2916.22	0.00	
10320.00†	90.000	267.893	7181.00	3031.64	485.61	-3016.16	0.00	
10420.00†	90.000	267.893	7181.00	3131.38	481.93	-3116.09	0.00	
10520.00†	90.000	267.893	7181.00	3231.11	478.25	-3216.02	0.00	
10620.00†	90.000	267.893	7181.00	3330.85	474.57	-3315.95	0.00	
10720.00†	90.000	267.893	7181.00	3430.59	470.90	-3415.89	0.00	
10820.00†	90.000	267.893	7181.00	3530.32	467.22	-3515.82	0.00	
10920.00†	90.000	267.893	7181.00	3630.06	463.54	-3615.75	0.00	
11020.00†	90.000	267.893	7181.00	3729.79	459.87	-3715.68	0.00	
11120.00†	90.000	267.893	7181.00	3829.53	456.19	-3815.61	0.00	
11220.00†	90.000	267.893	7181.00	3929.27	452.51	-3915.55	0.00	
11320.00†	90.000	267.893	7181.00	4029.00	448.83	-4015.48	0.00	
11420.00†	90.000	267.893	7181.00	4128.74	445.16	-4115.41	0.00	
11520.00†	90.000	267.893	7181.00	4228.47	441.48	-4215.34	0.00	
11620.00†	90.000	267.893	7181.00	4328.21	437.80	-4315.28	0.00	
11720.00†	90.000	267.893	7181.00	4427.95	434.12	-4415.21	0.00	
11820.00†	90.000	267.893	7181.00	4527.68	430.45	-4515.14	0.00	
11920.00†	90.000	267.893	7181.00	4627.42	426.77	-4615.07	0.00	
12020.00†	90.000	267.893	7181.00	4727.15	423.09	-4715.01	0.00	
12120.00†	90.000	267.893	7181.00	4826.89	419.42	-4814.94	0.00	
12220.00†	90.000	267.893	7181.00	4926.63	415.74	-4914.87	0.00	
12320.00†	90.000	267.893	7181.00	5026.36	412.06	-5014.80	0.00	
12420.00†	90.000	267.893	7181.00	5126.10	408.38	-5114.74	0.00	
12520.00†	90.000	267.893	7181.00	5225.83	404.71	-5214.67	0.00	
12620.00†	90.000	267.893	7181.00	5325.57	401.03	-5314.60	0.00	
12720.00†	90.000	267.893	7181.00	5425.31	397.35	-5414.53	0.00	
12820.00†	90.000	267.893	7181.00	5525.04	393.67	-5514.46	0.00	
12920.00†	90.000	267.893	7181.00	5624.78	390.00	-5614.40	0.00	



Planned Wellpath Report

GOETZEL 31C-30-M PWP (REV-A.0)

Page 5 of 7



REFERENCE WELLPATH IDENTIFICATION

Operator	SYNERGY RESOURCES CORPORATION	Slot	SLOT#07 GOETZEL 31C-30-M (1993'FNL & 2446'FEL, SEC.29)
Area	COLORADO	Well	GOETZEL 31C-30-M
Field	WELD COUNTY (NAD83,TRUE NORTH)	Wellbore	GOETZEL 31C-30-M PWB
Facility	SEC.29-T06N-R66W		

WELLPATH DATA (161 stations) † = interpolated/extrapolated station

MD [ft]	Inclination [°]	Azimuth [°]	TVD [ft]	Vert Sect [ft]	North [ft]	East [ft]	DLS [°/100ft]	Comments
13020.00†	90.000	267.893	7181.00	5724.51	386.32	-5714.33	0.00	
13120.00†	90.000	267.893	7181.00	5824.25	382.64	-5814.26	0.00	
13220.00†	90.000	267.893	7181.00	5923.99	378.97	-5914.19	0.00	
13320.00†	90.000	267.893	7181.00	6023.72	375.29	-6014.13	0.00	
13420.00†	90.000	267.893	7181.00	6123.46	371.61	-6114.06	0.00	
13520.00†	90.000	267.893	7181.00	6223.19	367.93	-6213.99	0.00	
13620.00†	90.000	267.893	7181.00	6322.93	364.26	-6313.92	0.00	
13720.00†	90.000	267.893	7181.00	6422.67	360.58	-6413.86	0.00	
13820.00†	90.000	267.893	7181.00	6522.40	356.90	-6513.79	0.00	
13920.00†	90.000	267.893	7181.00	6622.14	353.22	-6613.72	0.00	
14020.00†	90.000	267.893	7181.00	6721.87	349.55	-6713.65	0.00	
14120.00†	90.000	267.893	7181.00	6821.61	345.87	-6813.59	0.00	
14220.00†	90.000	267.893	7181.00	6921.35	342.19	-6913.52	0.00	
14320.00†	90.000	267.893	7181.00	7021.08	338.52	-7013.45	0.00	
14420.00†	90.000	267.893	7181.00	7120.82	334.84	-7113.38	0.00	
14520.00†	90.000	267.893	7181.00	7220.55	331.16	-7213.32	0.00	
14620.00†	90.000	267.893	7181.00	7320.29	327.48	-7313.25	0.00	
14720.00†	90.000	267.893	7181.00	7420.03	323.81	-7413.18	0.00	
14820.00†	90.000	267.893	7181.00	7519.76	320.13	-7513.11	0.00	
14920.00†	90.000	267.893	7181.00	7619.50	316.45	-7613.04	0.00	
15020.00†	90.000	267.893	7181.00	7719.23	312.77	-7712.98	0.00	
15120.00†	90.000	267.893	7181.00	7818.97	309.10	-7812.91	0.00	
15220.00†	90.000	267.893	7181.00	7918.71	305.42	-7912.84	0.00	
15320.00†	90.000	267.893	7181.00	8018.44	301.74	-8012.77	0.00	
15420.00†	90.000	267.893	7181.00	8118.18	298.07	-8112.71	0.00	
15512.10	90.000	267.893	7181.00 ²	8210.03	294.68	-8204.74	0.00	End of Tangent

HOLE & CASING SECTIONS

- Ref Wellbore: GOETZEL 31C-30-M PWB Ref Wellpath: GOETZEL 31C-30-M PWP (REV-A.0)

String/Diameter	Start MD [ft]	End MD [ft]	Interval [ft]	Start TVD [ft]	End TVD [ft]	Start N/S [ft]	Start E/W [ft]	End N/S [ft]	End E/W [ft]
13.5in Open Hole	20.00	1700.00	1680.00	20.00	1700.00	0.00	0.00	0.00	0.00
9.625in Casing Surface	20.00	1700.00	1680.00	20.00	1700.00	0.00	0.00	0.00	0.00
8.5in Open Hole	1700.00	15512.10	13812.10	1700.00	N/A	0.00	0.00	N/A	N/A



Planned Wellpath Report

GOETZEL 31C-30-M PWP (REV-A.0)

Page 6 of 7



REFERENCE WELLPATH IDENTIFICATION

Operator	SYNERGY RESOURCES CORPORATION	Slot	SLOT#07 GOETZEL 31C-30-M (1993'FNL & 2446'FEL, SEC.29)
Area	COLORADO	Well	GOETZEL 31C-30-M
Field	WELD COUNTY (NAD83,TRUE NORTH)	Wellbore	GOETZEL 31C-30-M PWB
Facility	SEC.29-T06N-R66W		

TARGETS

Name	MD [ft]	TVD [ft]	North [ft]	East [ft]	Grid East [US ft]	Grid North [US ft]	Latitude	Longitude	Shape
SEC.29-T06N-R66W NORTHERN		0.00	180.01	1.10	3194449.66	1411671.99	40°27'40.817"N	104°48'04.259"W	polygon
SEC.29-T06N-R66W SOUTHERN		0.00	180.01	1.10	3194449.66	1411671.99	40°27'40.817"N	104°48'04.259"W	polygon
SEC.30-T06N-R66W NORTHERN		0.00	180.01	1.10	3194449.66	1411671.99	40°27'40.817"N	104°48'04.259"W	polygon
SEC.30-T06N-R66W SOUTHERN		0.00	180.01	1.10	3194449.66	1411671.99	40°27'40.817"N	104°48'04.259"W	polygon
2) GOETZEL 31C-30-M BHL REV-1 (1404'FNL & 510'FWL, SEC.30)	15512.10	7181.00	294.68	-8204.74	3186243.49	1411721.98	40°27'41.936"N	104°49'50.419"W	circle
1) GOETZEL 31C-30-M TOP REV-1 (1401'FNL & 2584'FWL, SEC.29)	7593.64	7181.00	585.86	-291.64	3194153.75	1412075.50	40°27'44.827"N	104°48'08.046"W	circle

SURVEY PROGRAM -

Ref Wellbore: GOETZEL 31C-30-M PWB Ref Wellpath: GOETZEL 31C-30-M PWP (REV-A.0)

Start MD [ft]	End MD [ft]	Positional Uncertainty Model	Log Name/Comment	Wellbore
20.00	1700.00	Custom BHI NaviTrak (Standard Rotating) (Rockies 0.03Gt model)		GOETZEL 31C-30-M PWB
1700.00	15512.10	Custom BHI AutoTrak Curve (Short) (Rockies 0.03Gt model)		GOETZEL 31C-30-M PWB



Planned Wellpath Report

GOETZEL 31C-30-M PWP (REV-A.0)

Page 7 of 7



REFERENCE WELLPATH IDENTIFICATION

Operator	SYNERGY RESOURCES CORPORATION	Slot	SLOT#07 GOETZEL 31C-30-M (1993'FNL & 2446'FEL, SEC.29)
Area	COLORADO	Well	GOETZEL 31C-30-M
Field	WELD COUNTY (NAD83,TRUE NORTH)	Wellbore	GOETZEL 31C-30-M PWB
Facility	SEC.29-T06N-R66W		

DESIGN COMMENTS

MD [ft]	Inclination [°]	Azimuth [°]	TVD [ft]	Comment
20.00	0.000	33.144	20.00	Tie On
1900.00	0.000	33.144	1900.00	End of Tangent
2309.22	8.184	33.144	2307.83	End of Build
6541.27	8.184	33.144	6496.77	End of Tangent
7593.64	90.000	267.893	7181.00	End of 3D Arc
15512.10	90.000	267.893	7181.00	End of Tangent