



PDSI
27610 Commerce Oaks Drive
Oak Ridge North, TX 77285

DL1697

5":100' - MD
5/15/2013 3:13:05 AM

Oper. Company: Bill Barrett Corporation
Country: USA
State / Province: Colorado
County / Parish: Weld County
Started: 05/08/2013 10:30 AM

API/UWI: 512336899
Field: NE Wattenburg
Well: CVR-5-63-32-3340BH
Rig: Nabors M-37
Ended: 05/15/2013 03:00 AM

Personnel

Day Hand: David Rask
Night Hand: Jon Woodgate
Comp. Emp: PDSI

Location

Latitude: 48° 21' 21" N
Longitude: 104 28' 5" W
Elev. GL: 4,578'
Elev. DF: 23'
Elev. KB: 23'

Hole Data

Size	From	To
13 1/2"	0	834
8 3/4"	834	6422
6 1/8"	6422	10570

Casing Data

Size	From	To
9 5/8"	0	834
7"	0	6378

Bit Sizes

Size	From	To
13 1/2"	0	834
8 3/4"	834	6422
6 1/8"	6422	10570

Mud Data

Type	Weight	Density	Viscosity	Rm	Rmf	Rmc	From	To
WBM	8.4 - 9.2						0	10570

Tool Run Data

Serial Number	Gamma Offset	Resist. Offset	Start Time	Start Depth	End Time	End Depth
6153	0	51	5/6/2013 3:30:51 PM	834	5/8/2013 7:00:51 AM	5826
6141	43	63	5/8/2013 8:00:37 AM	5826	5/8/2013 11:00:37 PM	6202
6141	63	43	5/9/2013 12:30:41 AM	6202	5/9/2013 12:00:41 PM	6422
6141	35	55	5/10/2013 8:30:36 AM	6422	5/11/2013 2:30:36 AM	6605
6141	35	55	5/11/2013 2:30:43 AM	6605	5/13/2013 1:30:43 PM	6701
6141	35	55	5/11/2013 2:30:50 PM	6605	5/13/2013 10:30:50 AM	8469
6141	35	55	5/13/2013 11:00:47 AM	8469	5/15/2013 3:00:47 AM	10570

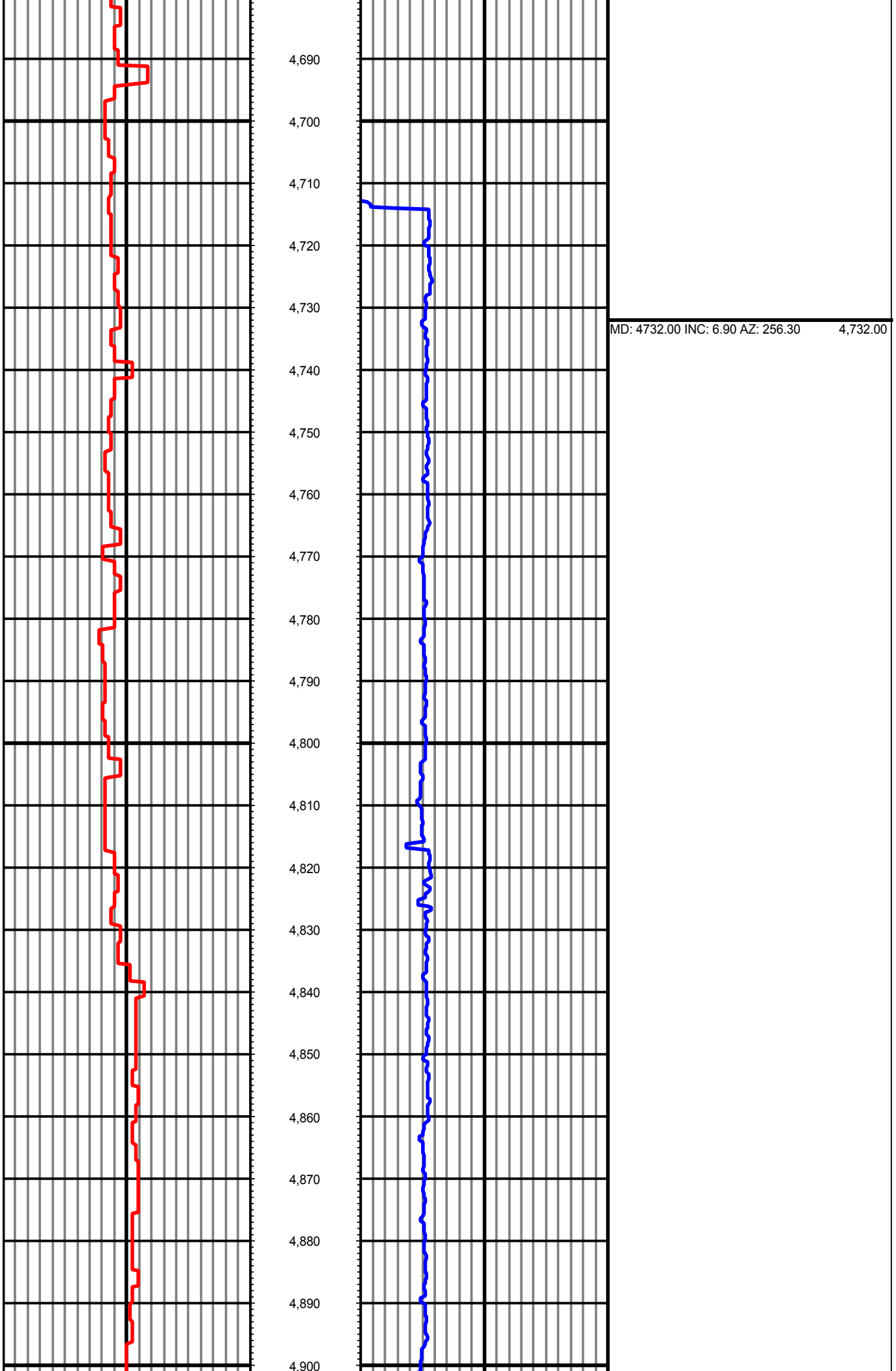
All interpretations are opinions based on inferences from electrical or other measurements and we cannot and do not guarantee the accuracy or correctness of any interpretation, and we shall not except in the case of gross or willful negligence on our part, be liable or responsible for any loss, cost damages or expenses incurred or sustained by anyone resulting from an interpretation made by any of our officers, agents, or employees.

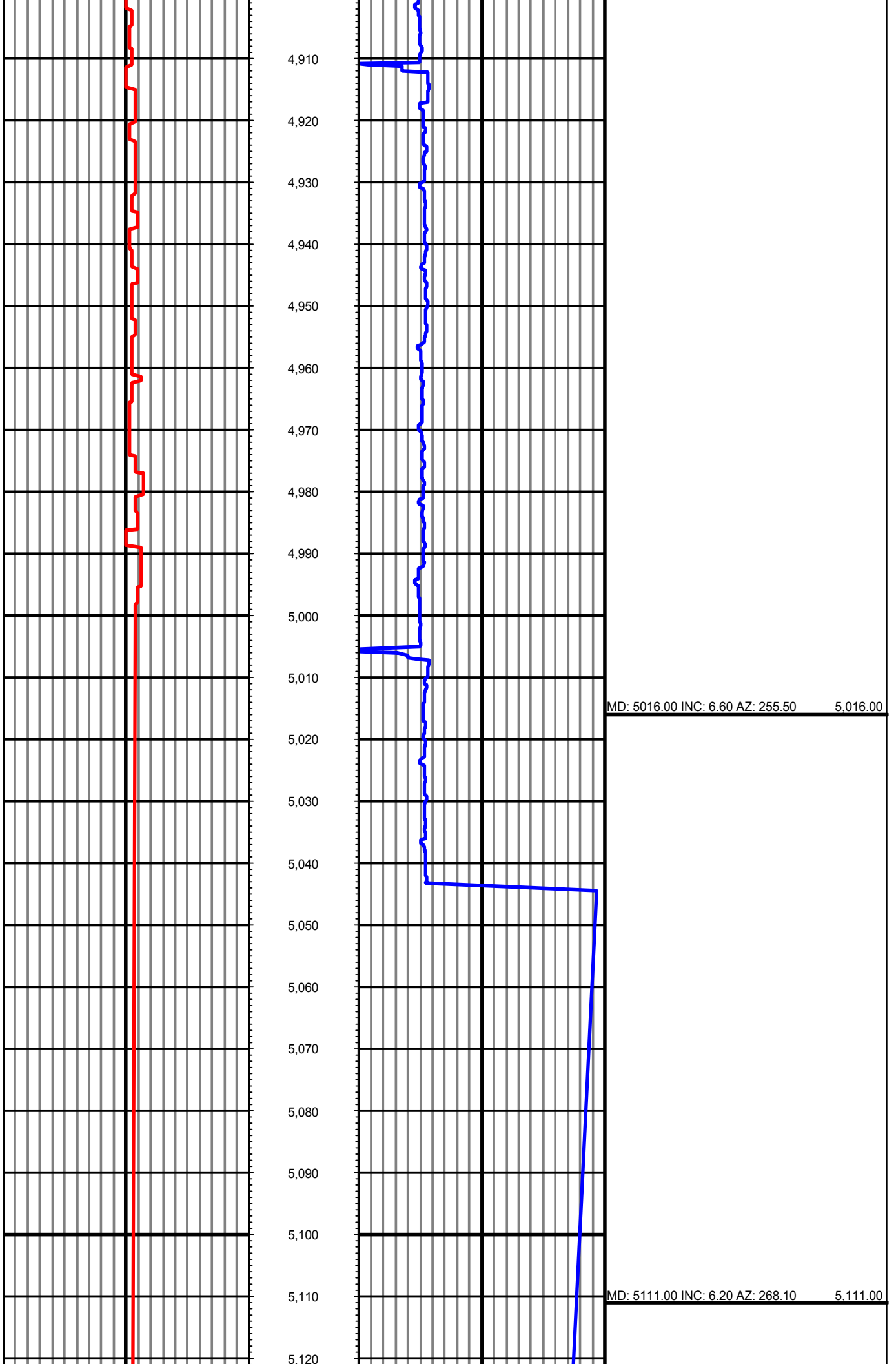
0.00 Counts(mG) 150.00 MD 0.00 ROP(FT/HR) 600.00 Surveys (MD/INC/AZ)
FT

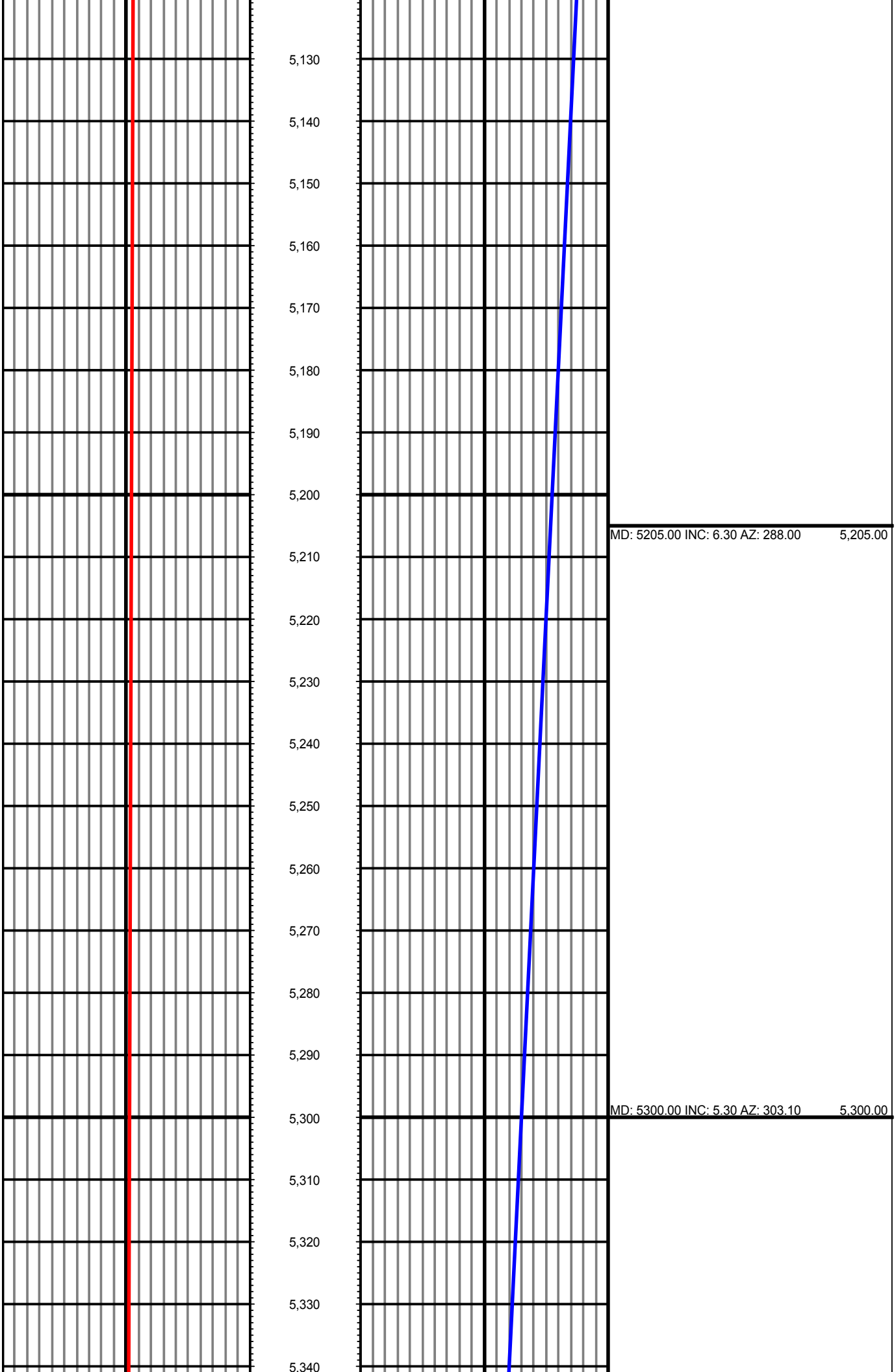


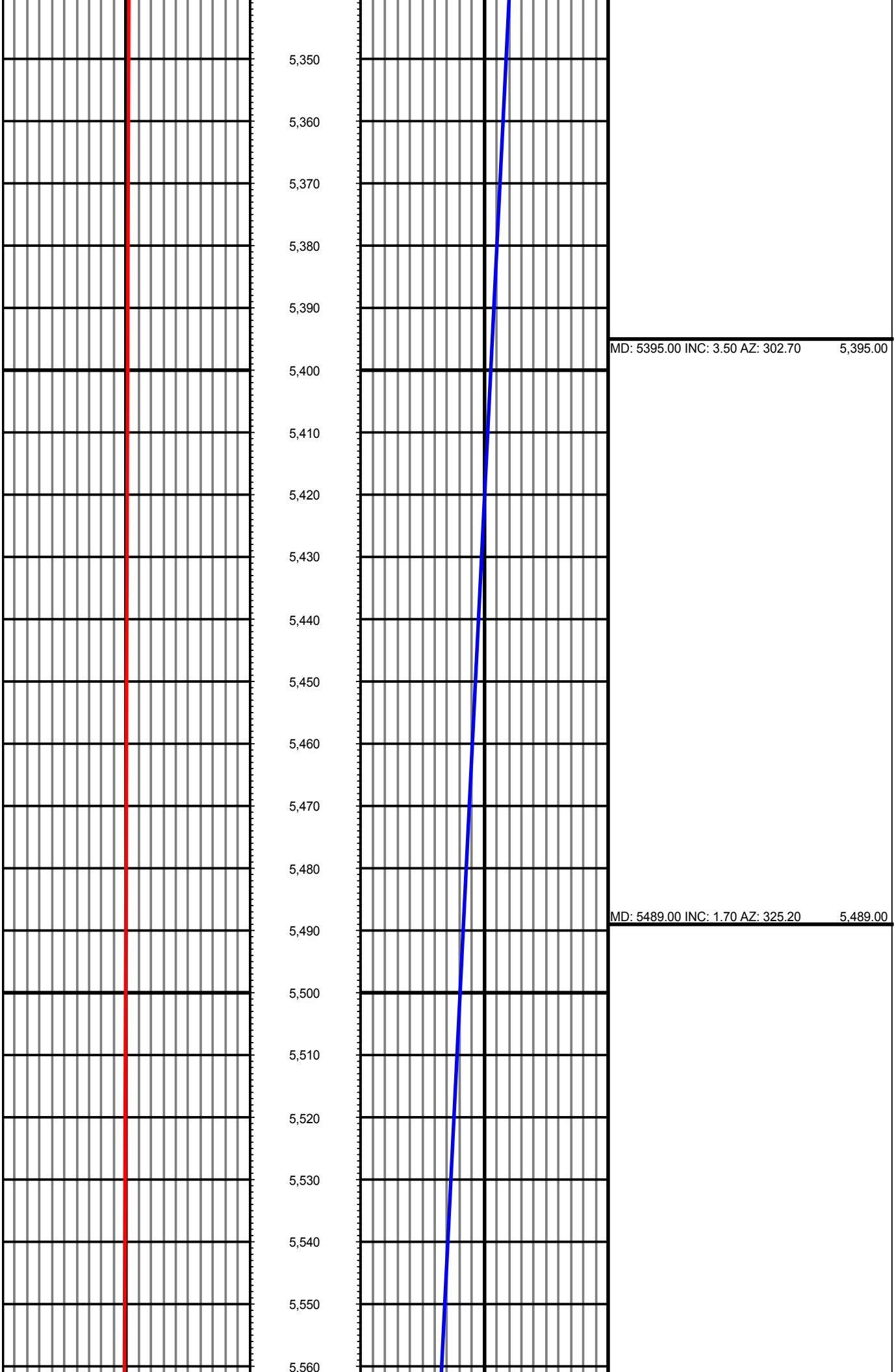
4 680

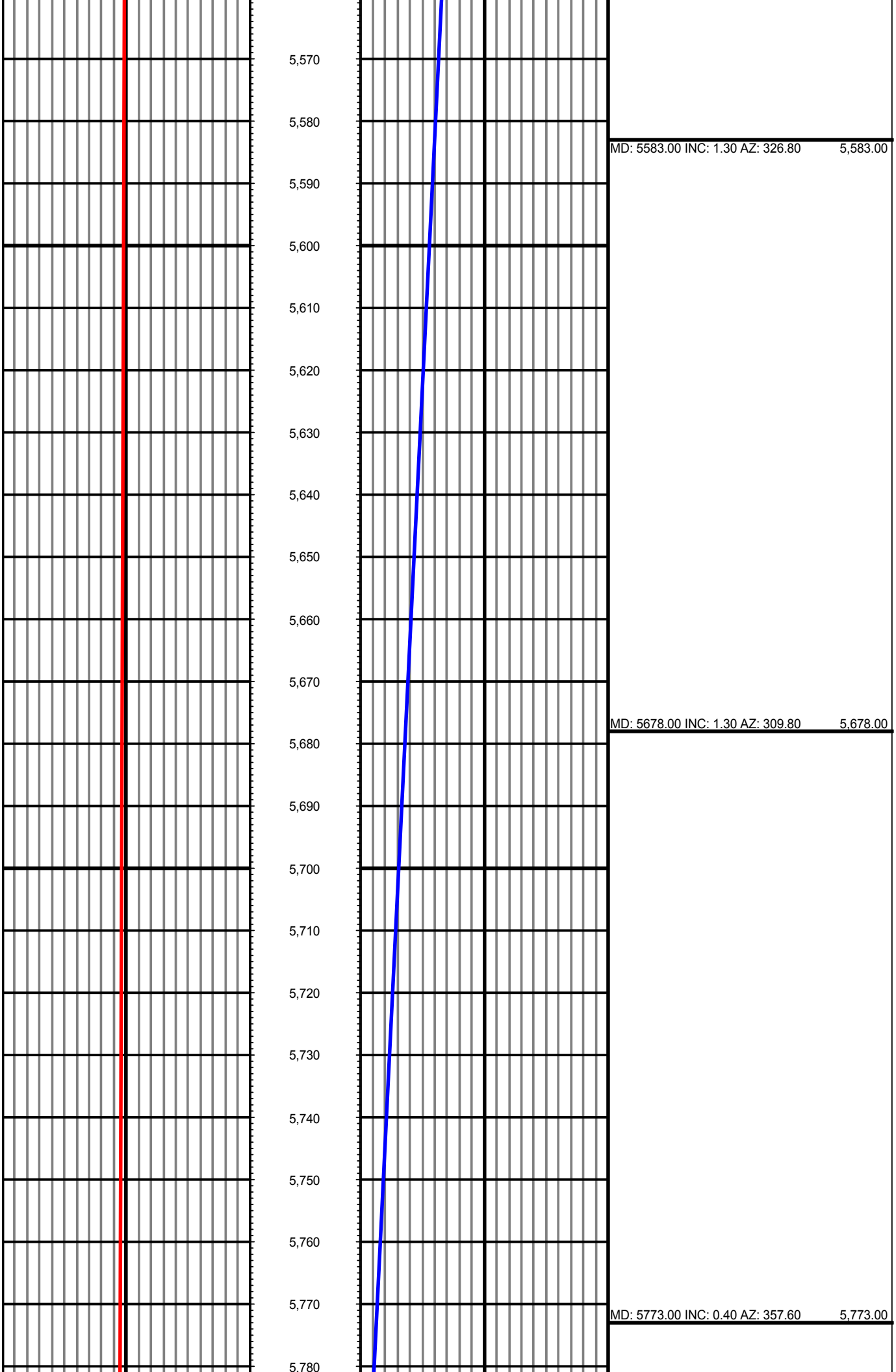


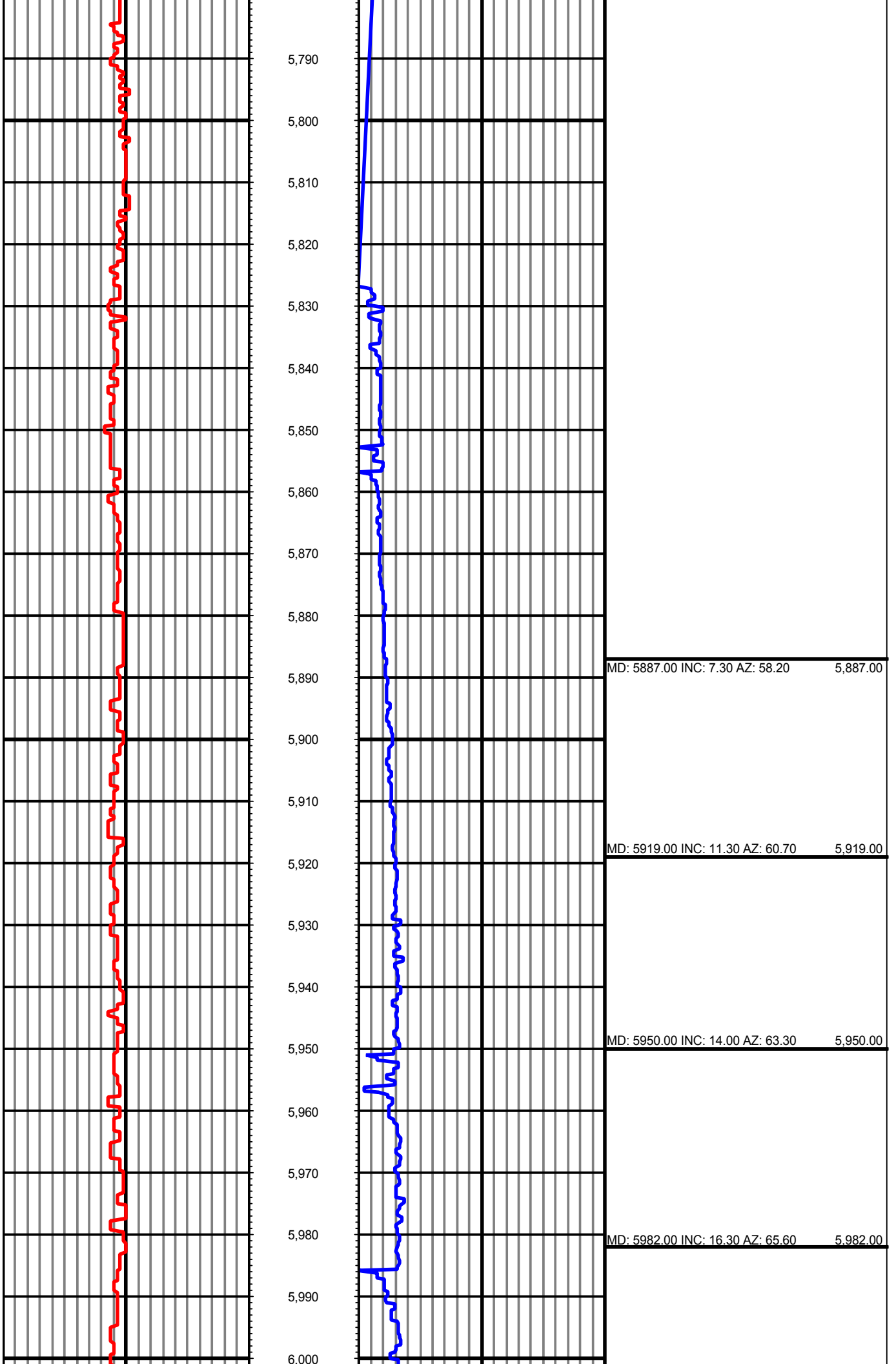


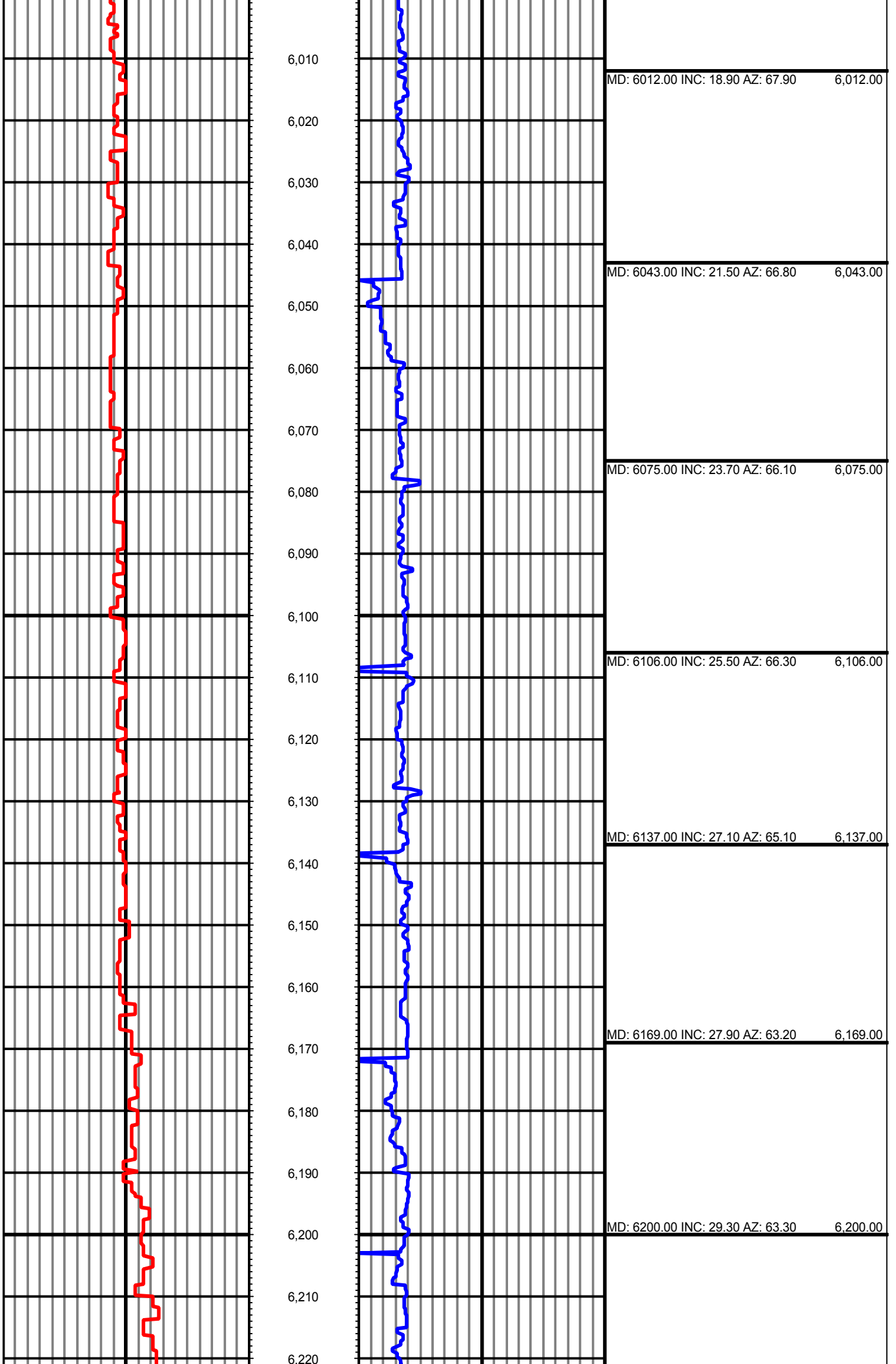


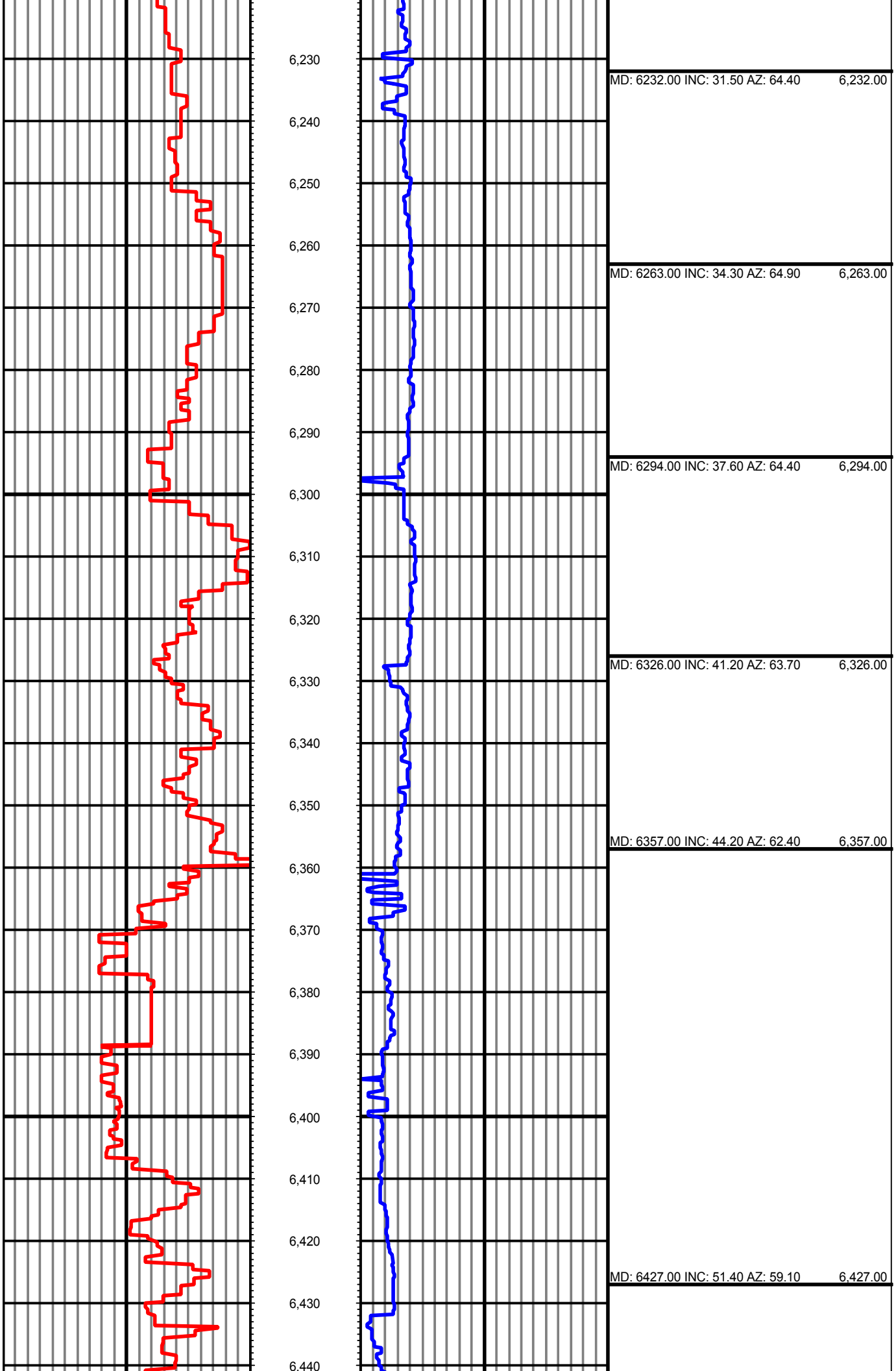


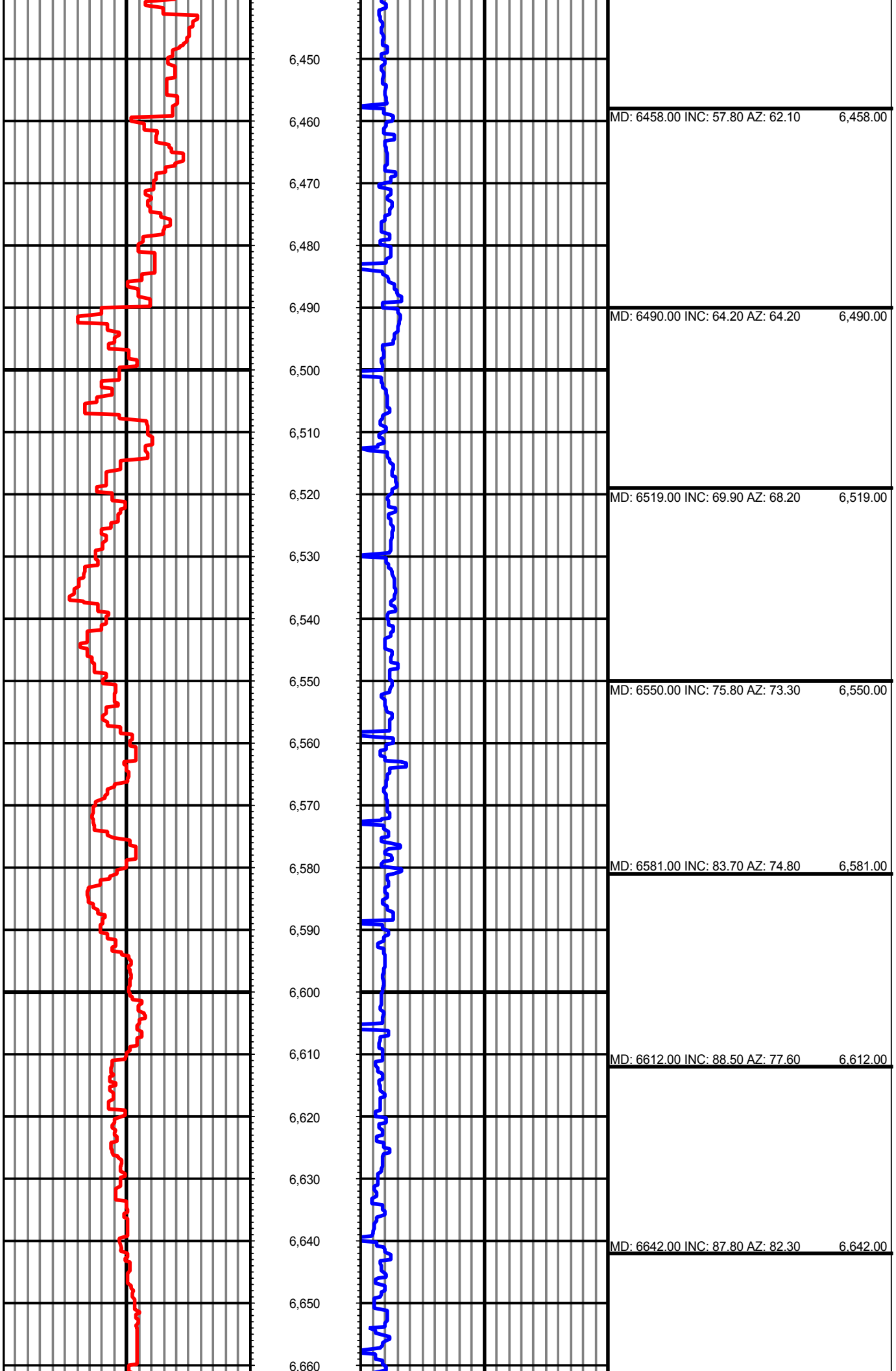


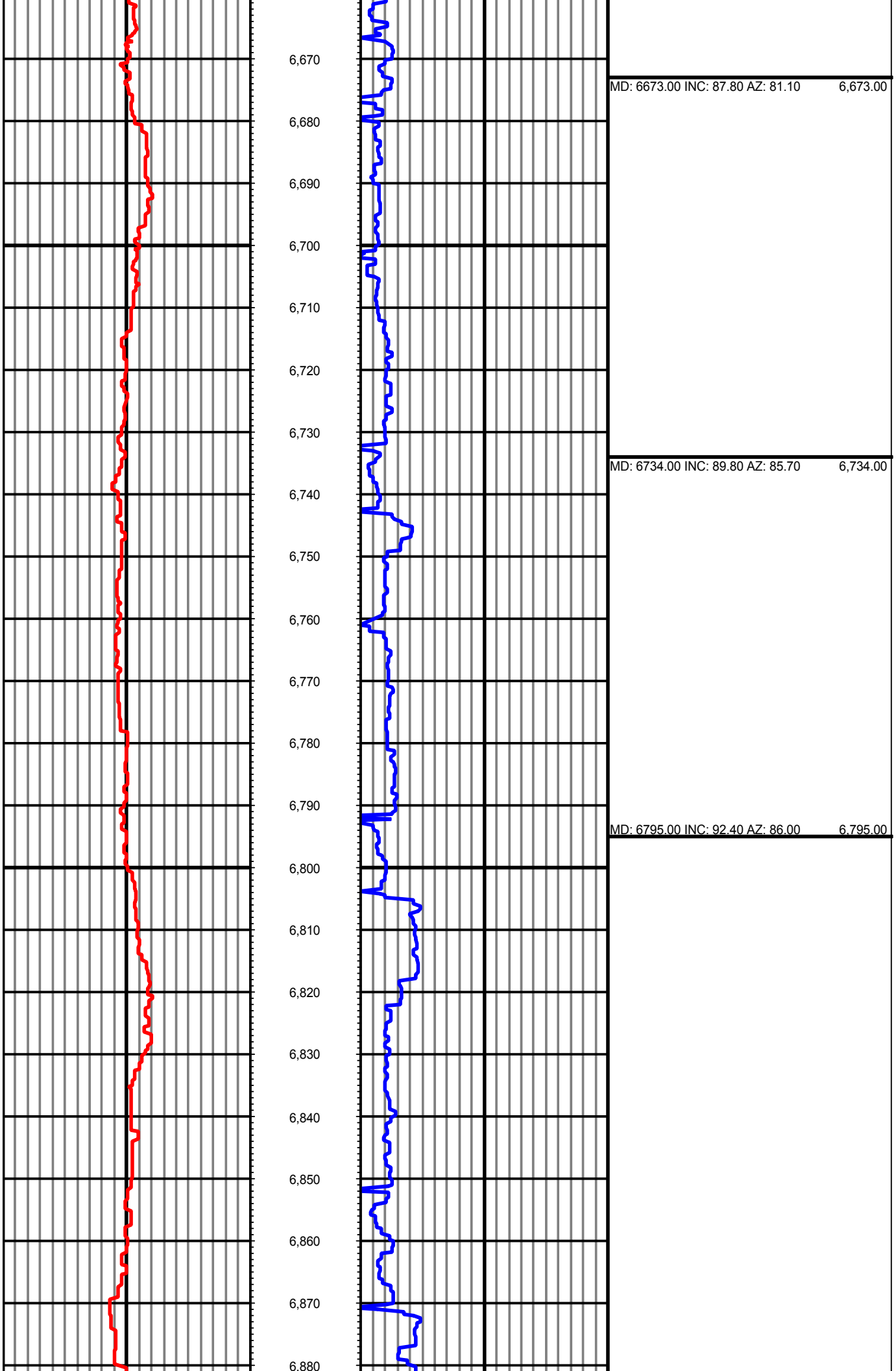


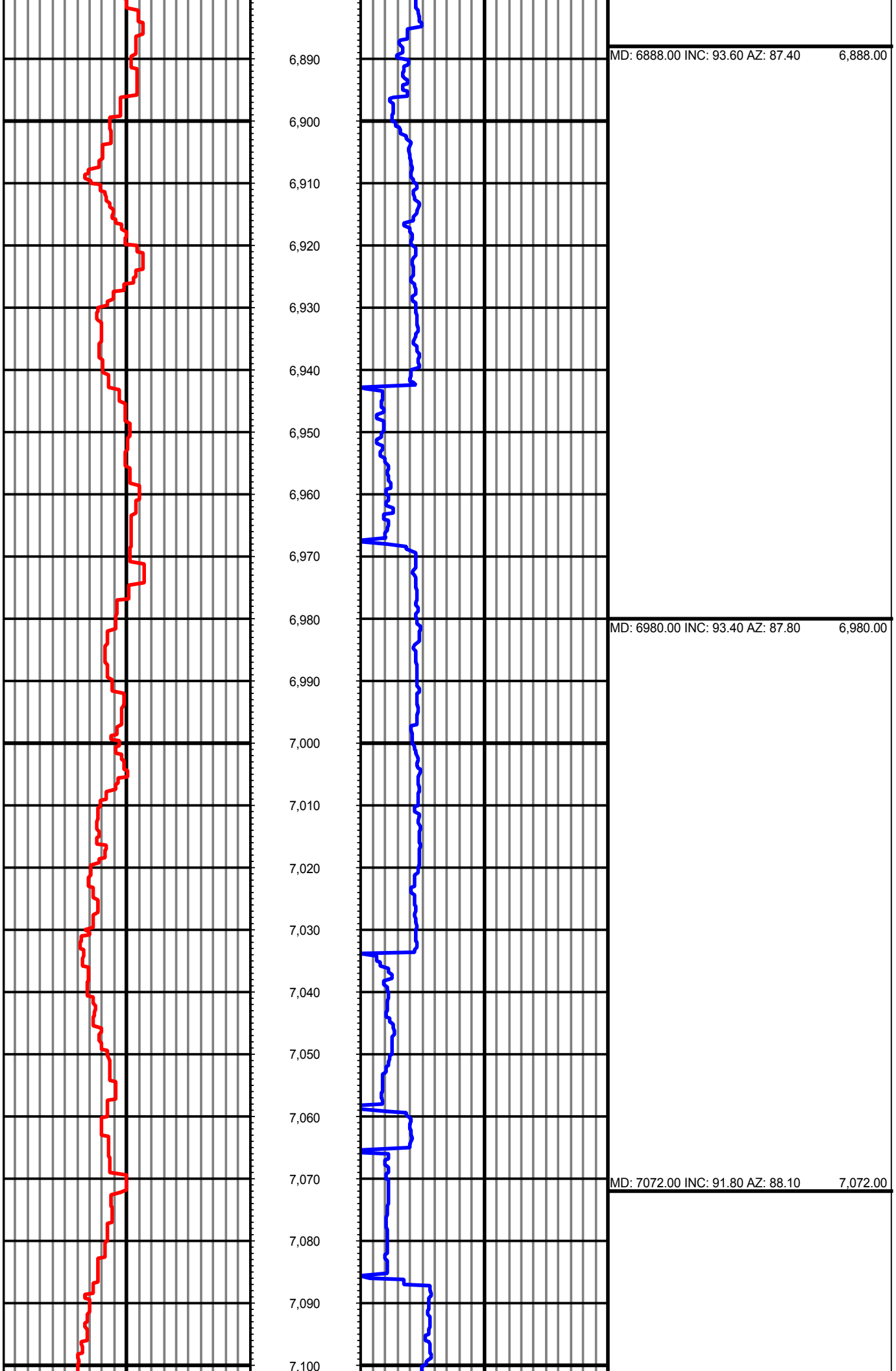


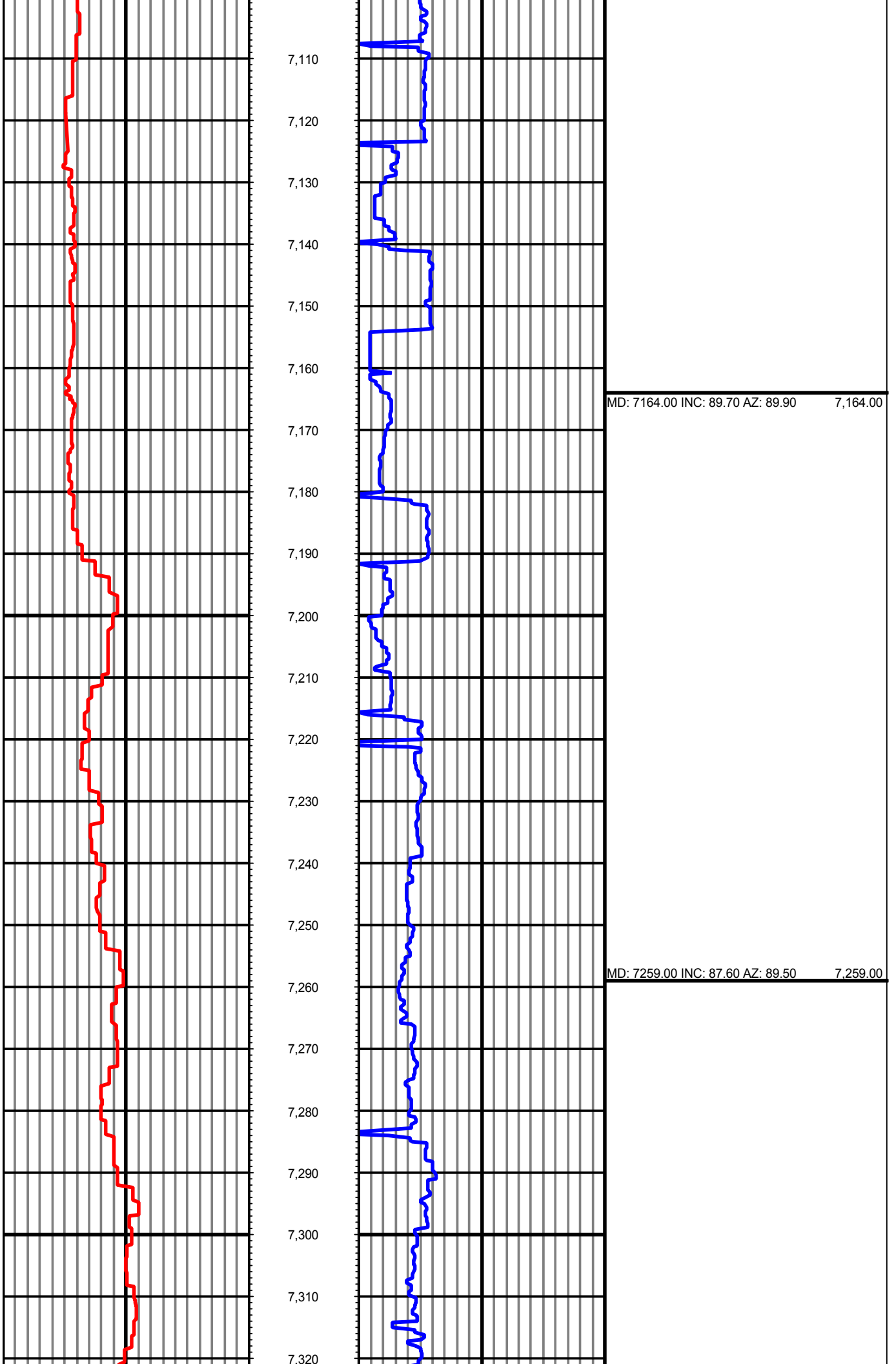


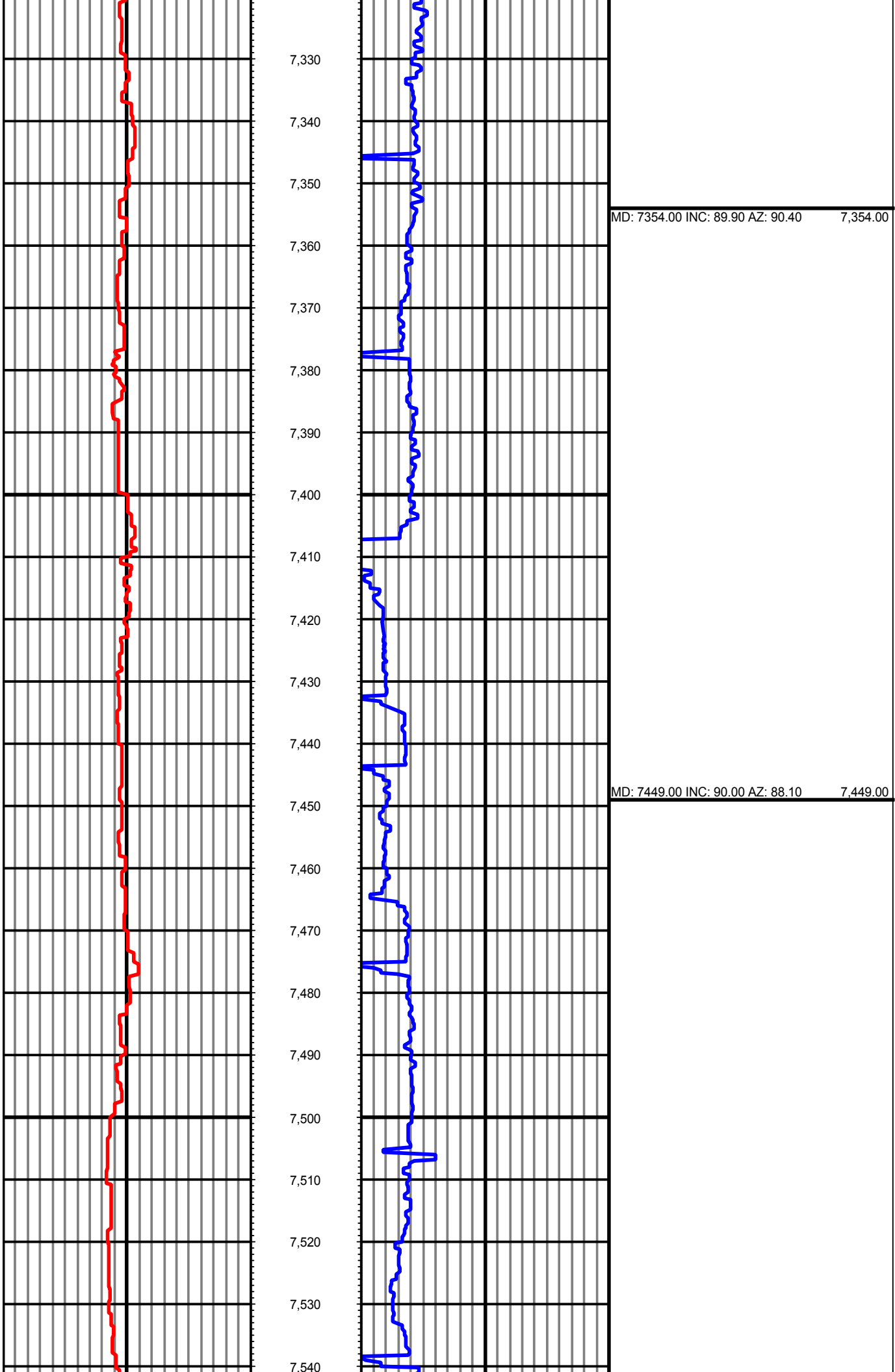


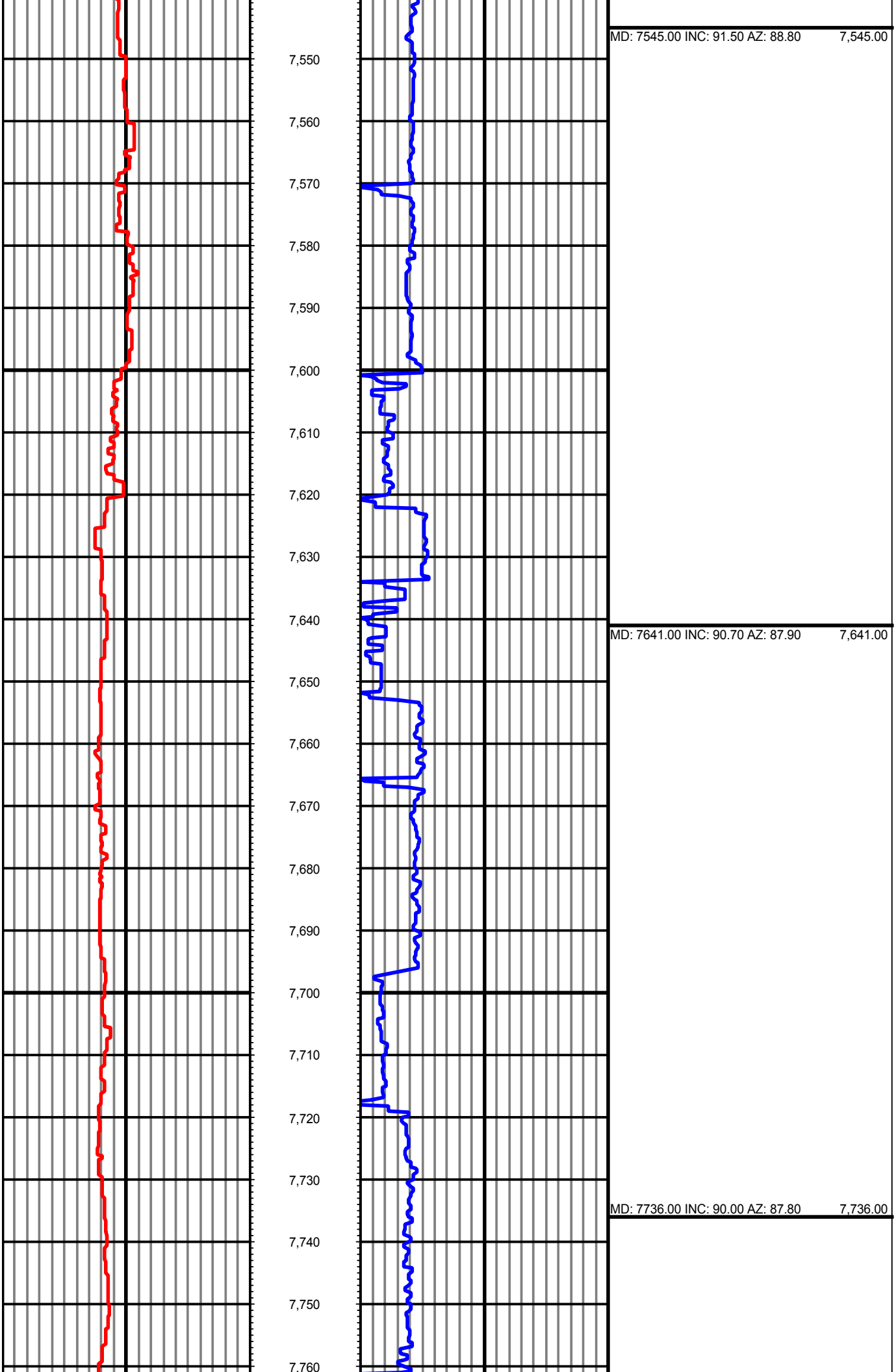


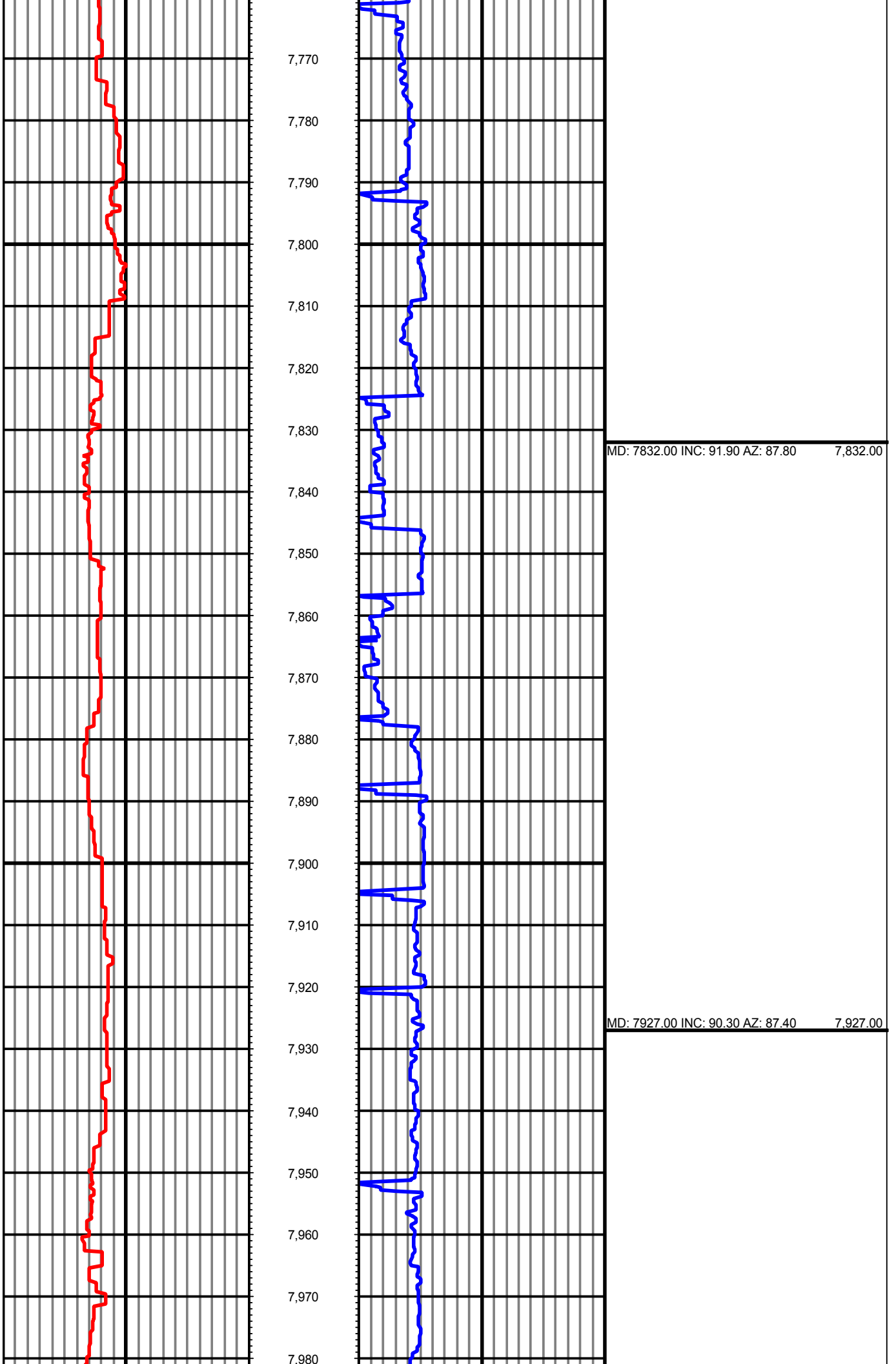


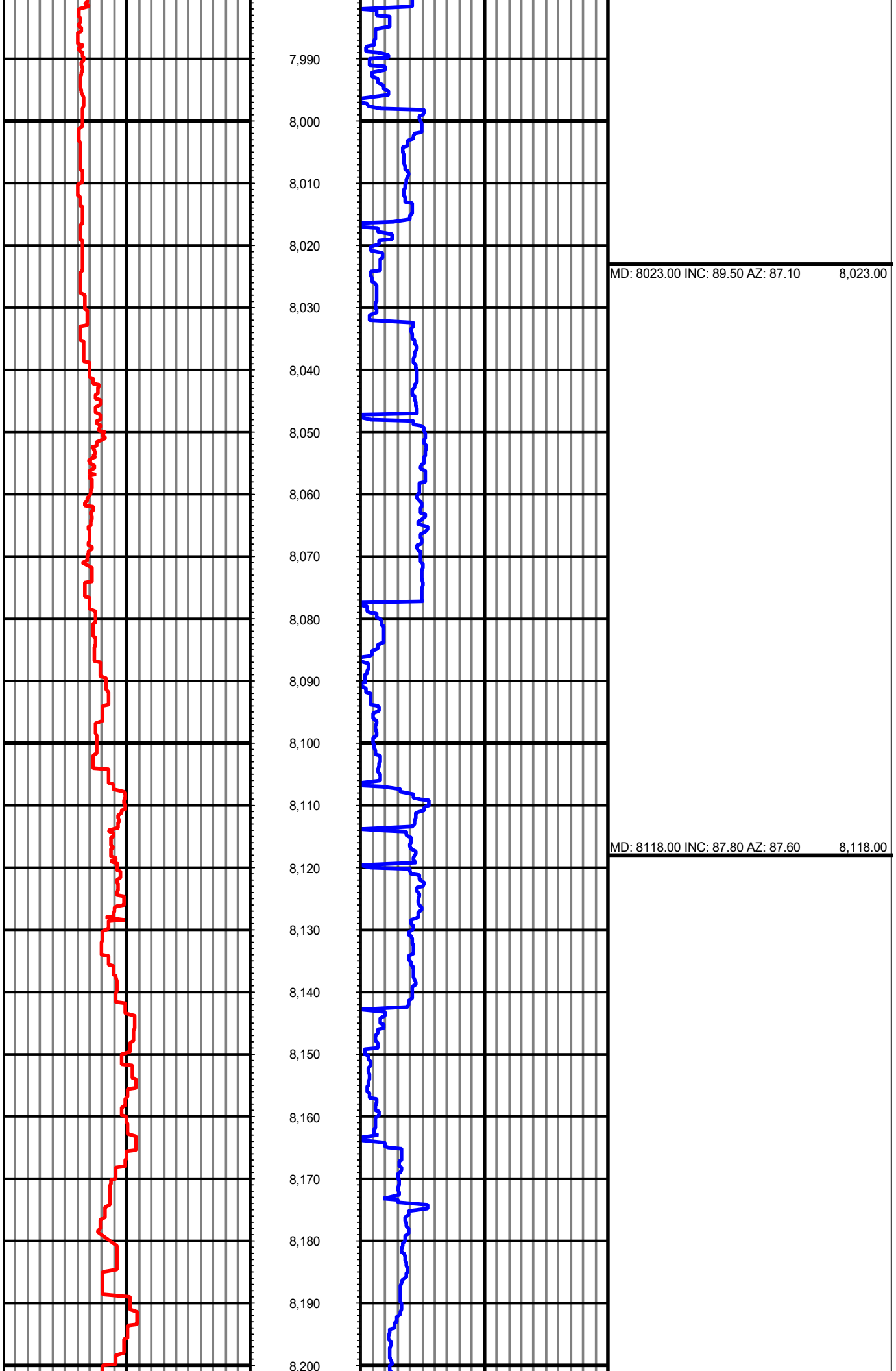


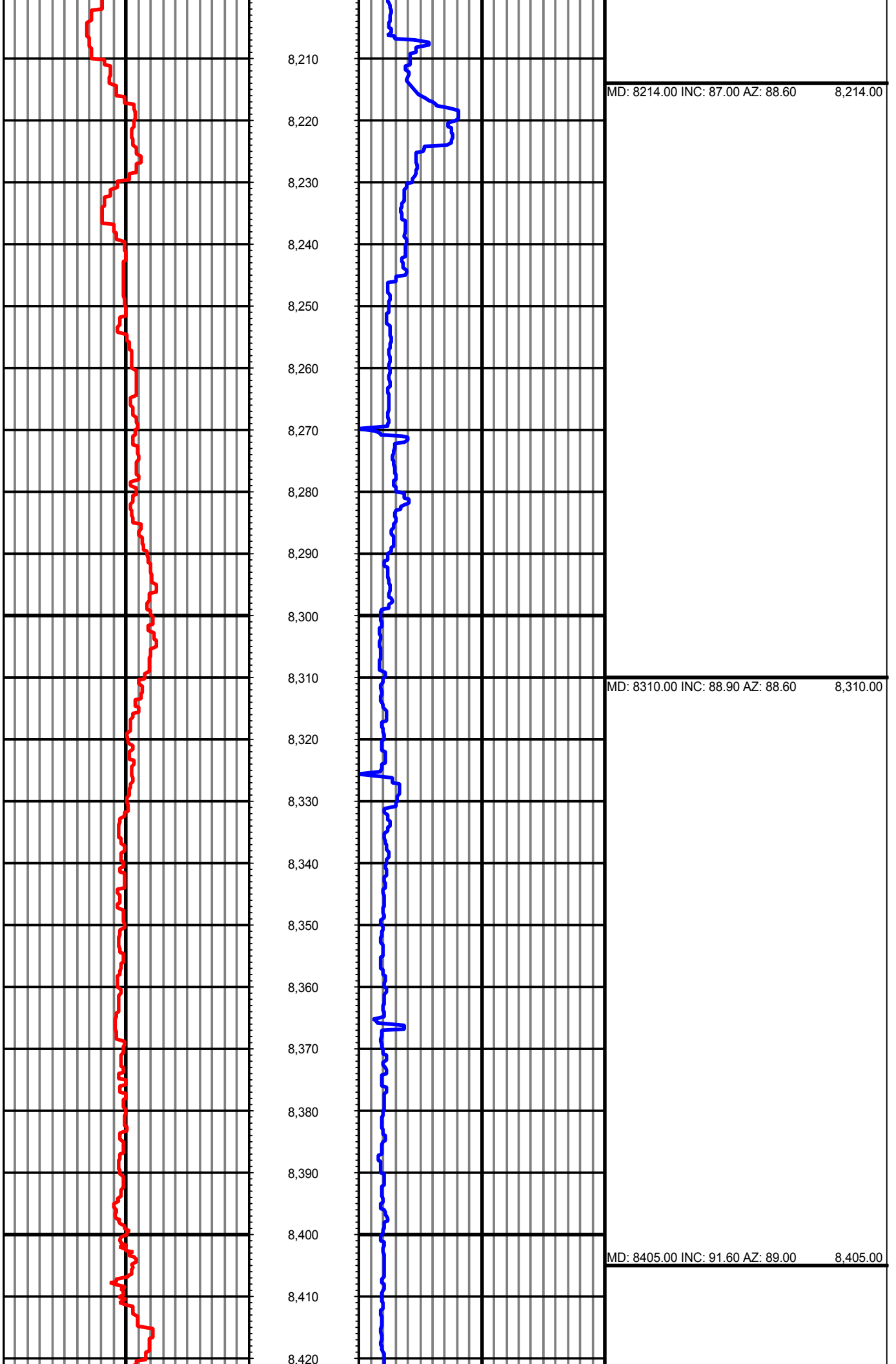


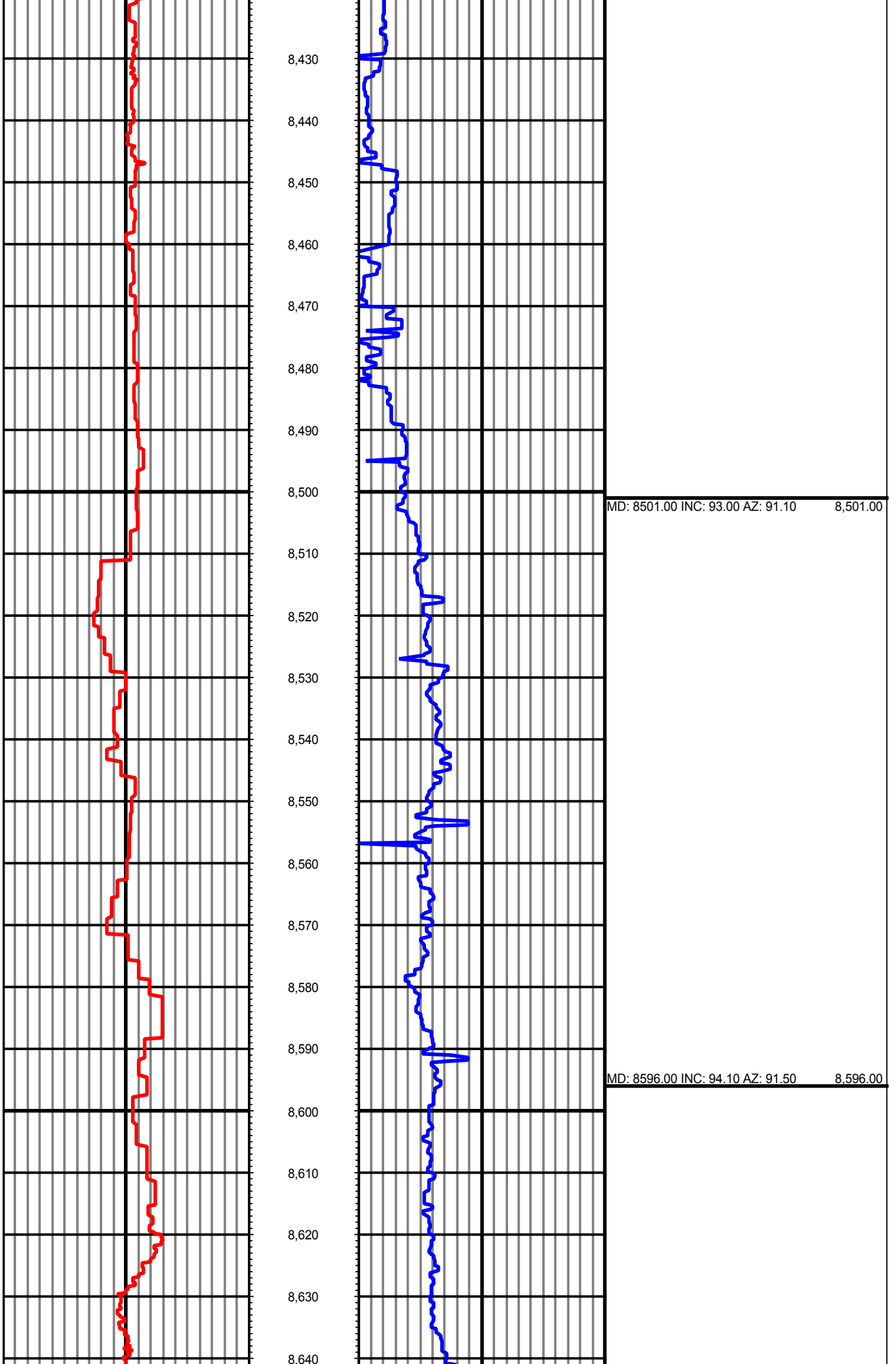


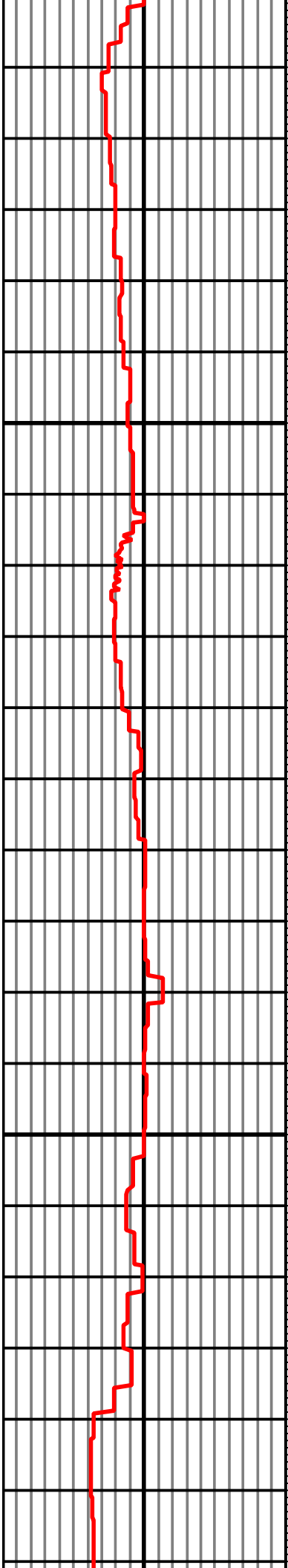




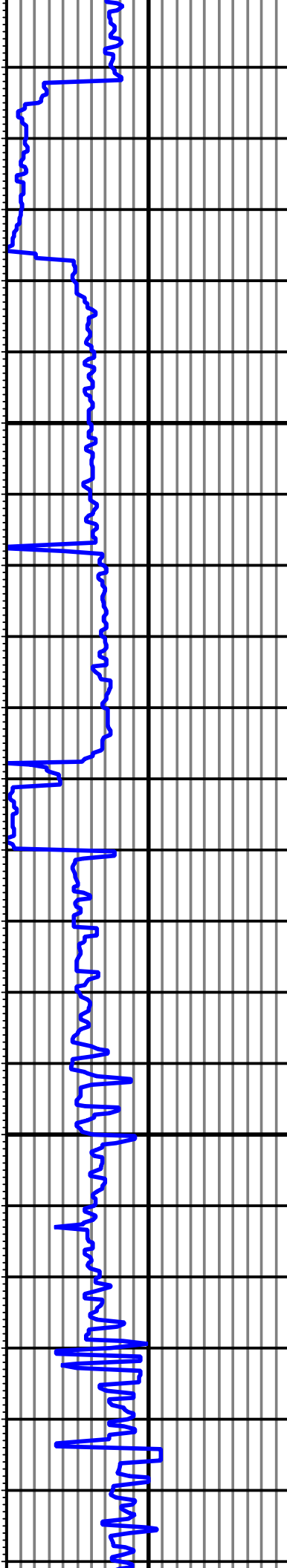






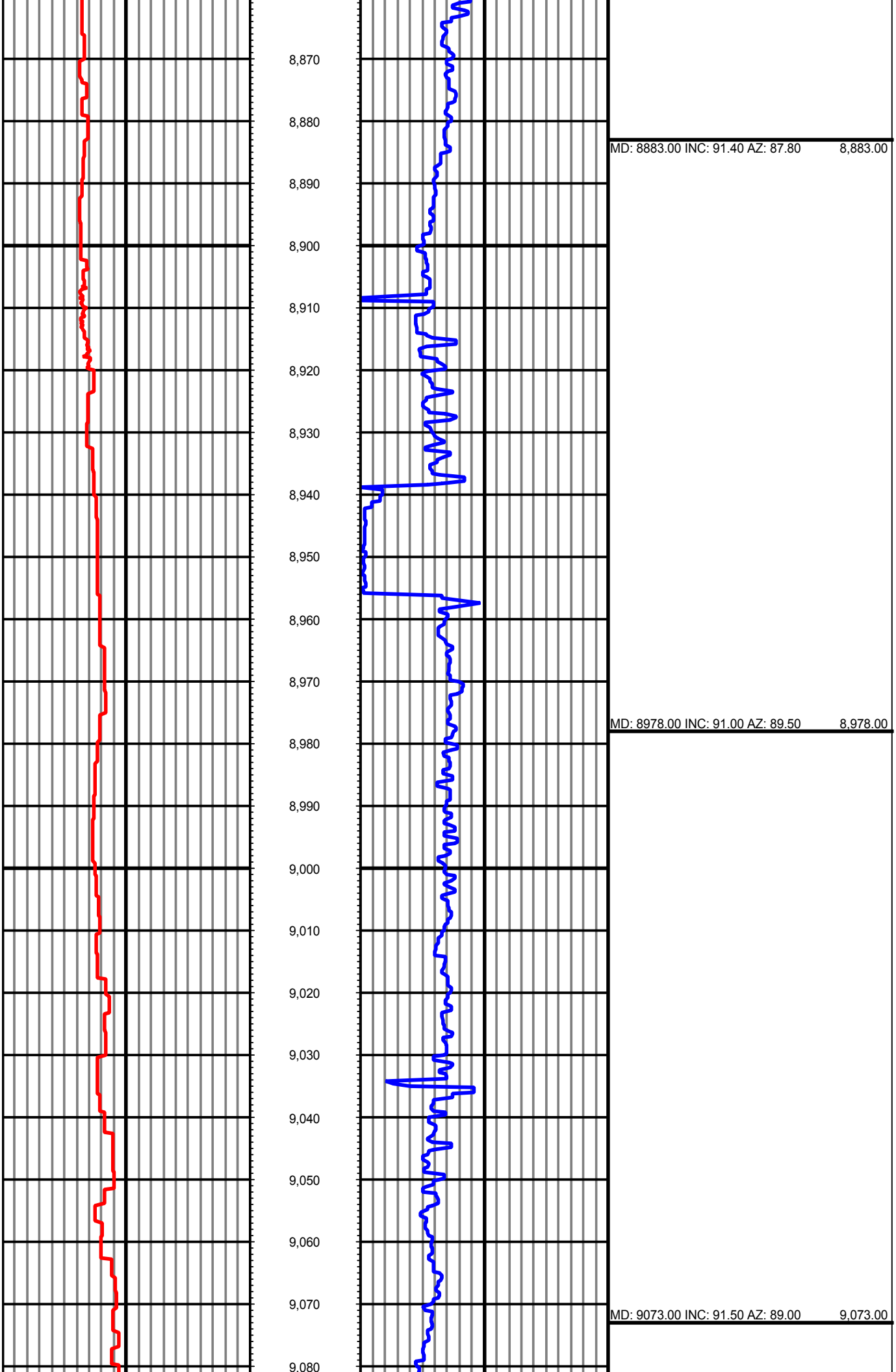


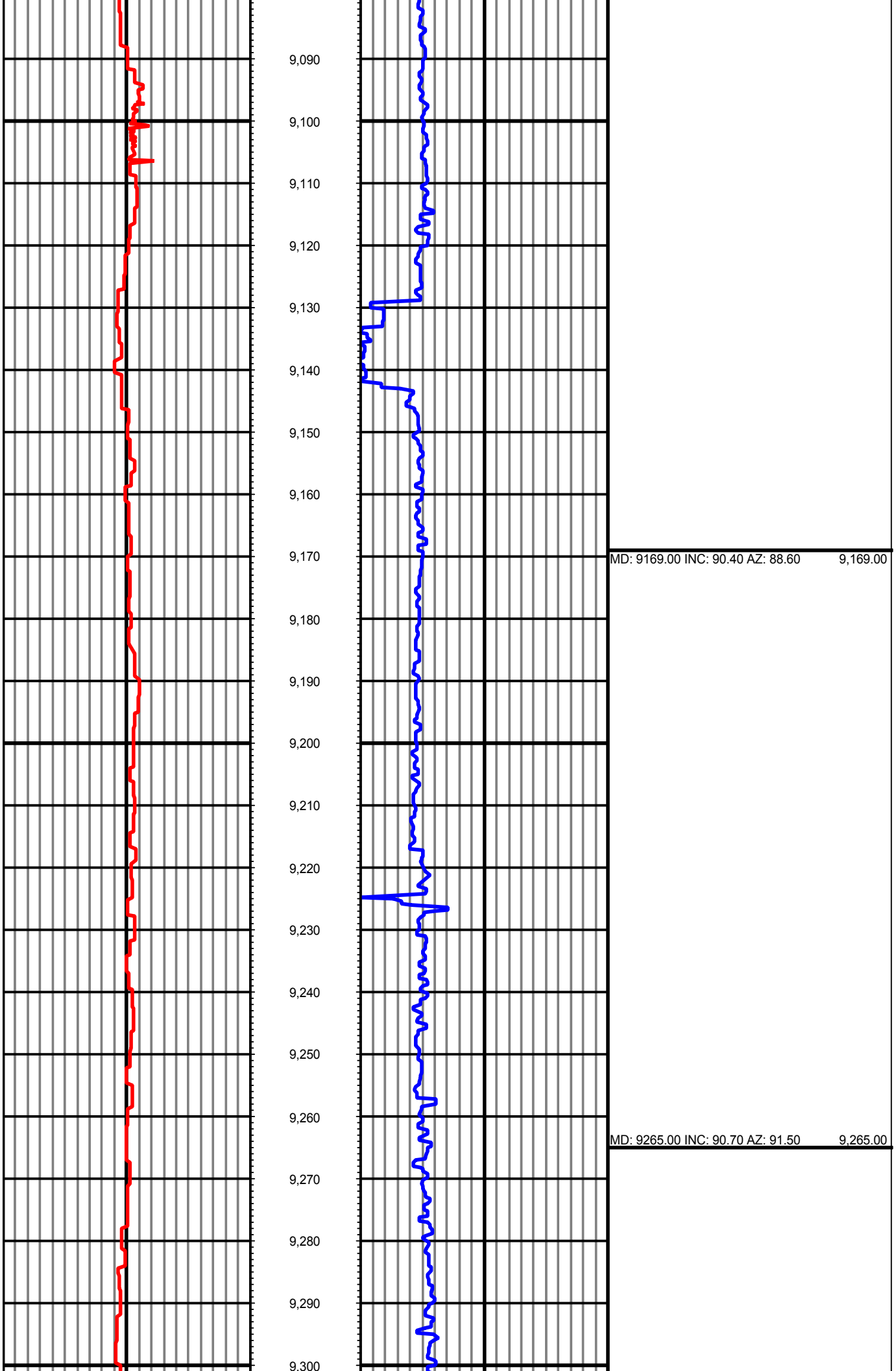
8,650
8,660
8,670
8,680
8,690
8,700
8,710
8,720
8,730
8,740
8,750
8,760
8,770
8,780
8,790
8,800
8,810
8,820
8,830
8,840
8,850
8,860

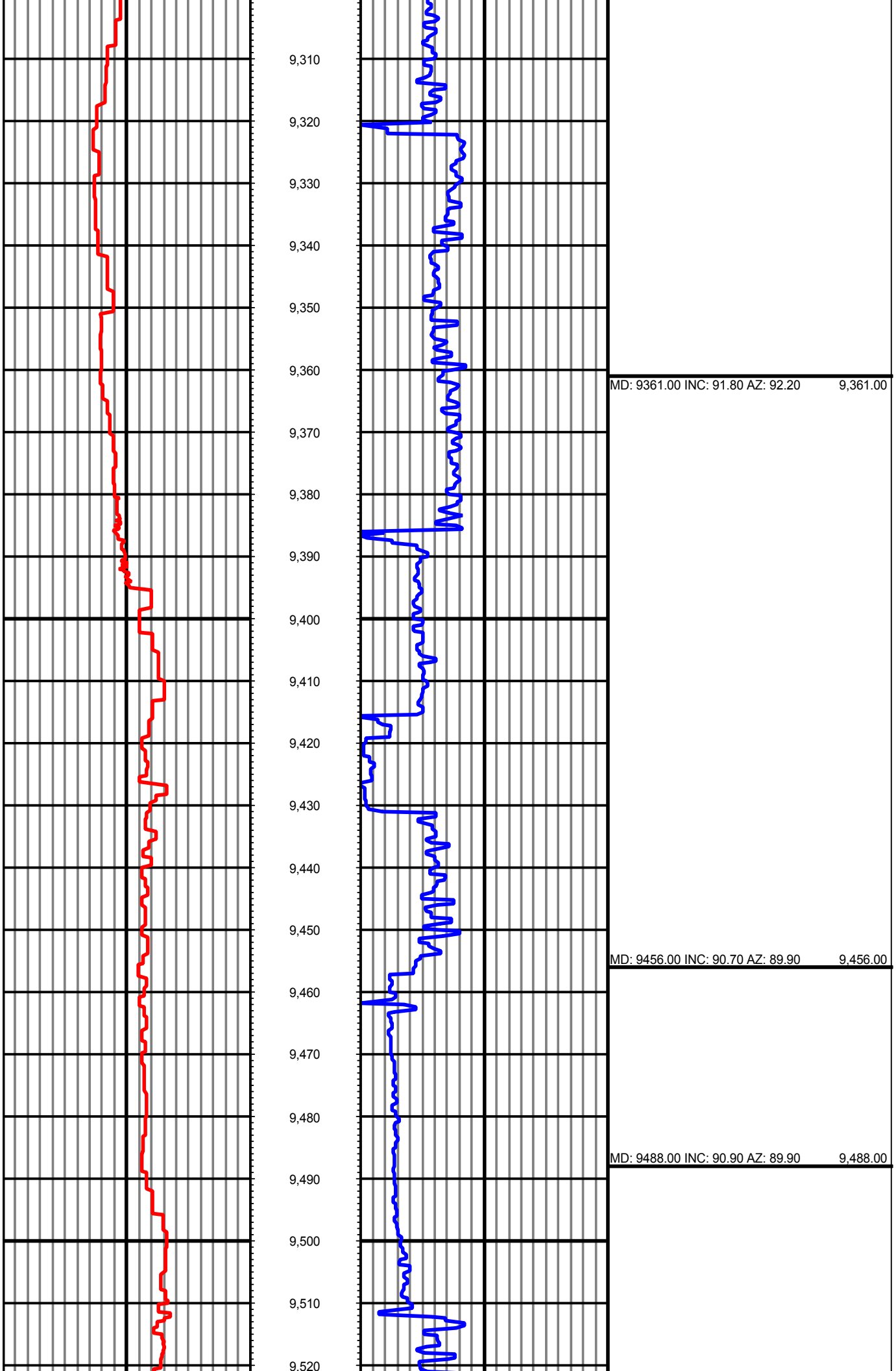


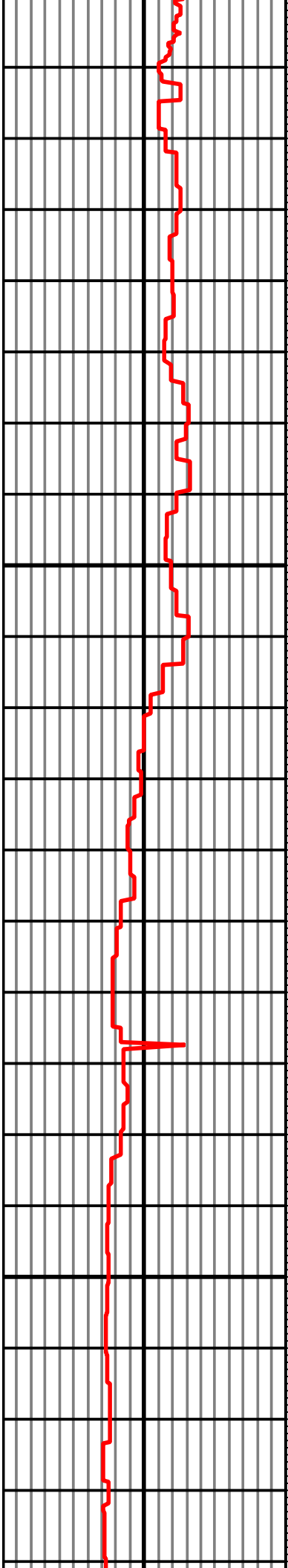
MD: 8692.00 INC: 91.90 AZ: 89.20 8,692.00

MD: 8788.00 INC: 90.70 AZ: 88.30 8,788.00

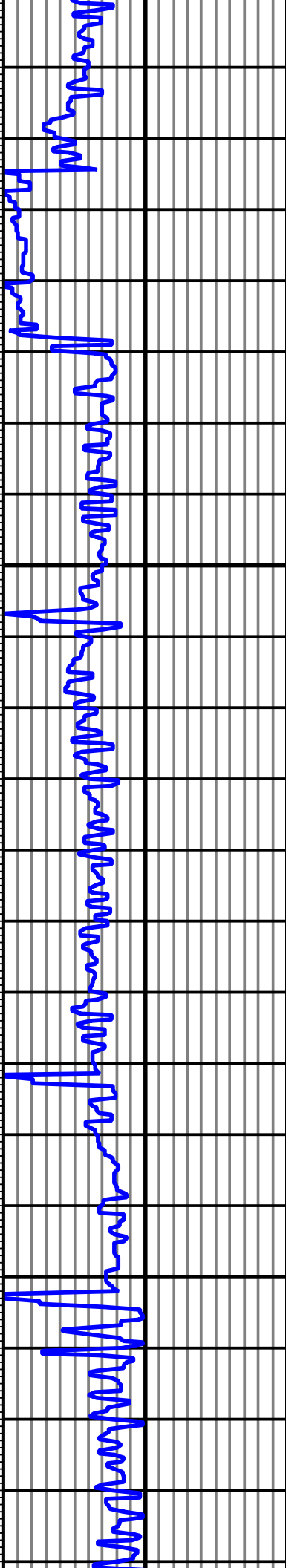








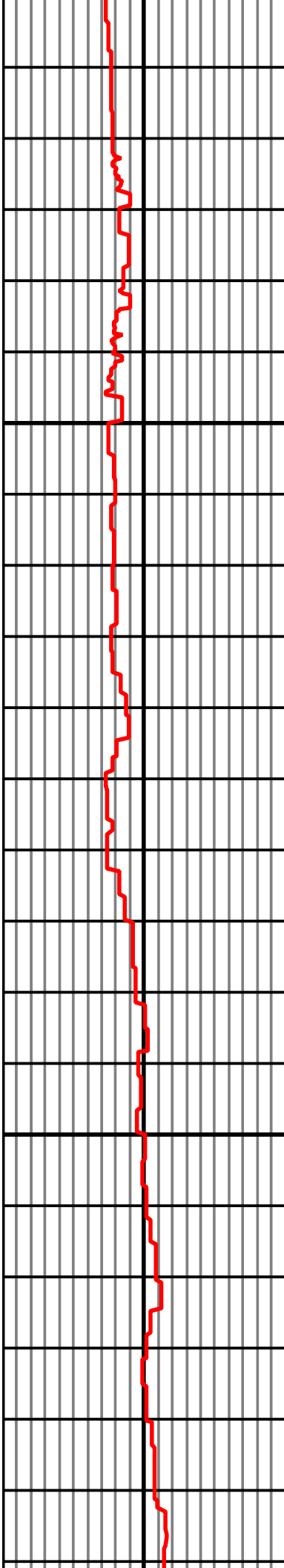
9,530
9,540
9,550
9,560
9,570
9,580
9,590
9,600
9,610
9,620
9,630
9,640
9,650
9,660
9,670
9,680
9,690
9,700
9,710
9,720
9,730
9,740



MD: 9552.00 INC: 90.10 AZ: 89.30 9,552.00

MD: 9648.00 INC: 89.00 AZ: 89.70 9,648.00

MD: 9712.00 INC: 90.50 AZ: 89.30 9,712.00



9,750

9,760

9,770

9,780

9,790

9,800

9,810

9,820

9,830

9,840

9,850

9,860

9,870

9,880

9,890

9,900

9,910

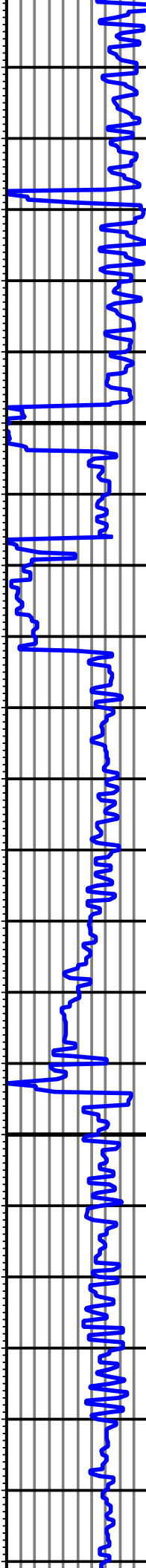
9,920

9,930

9,940

9,950

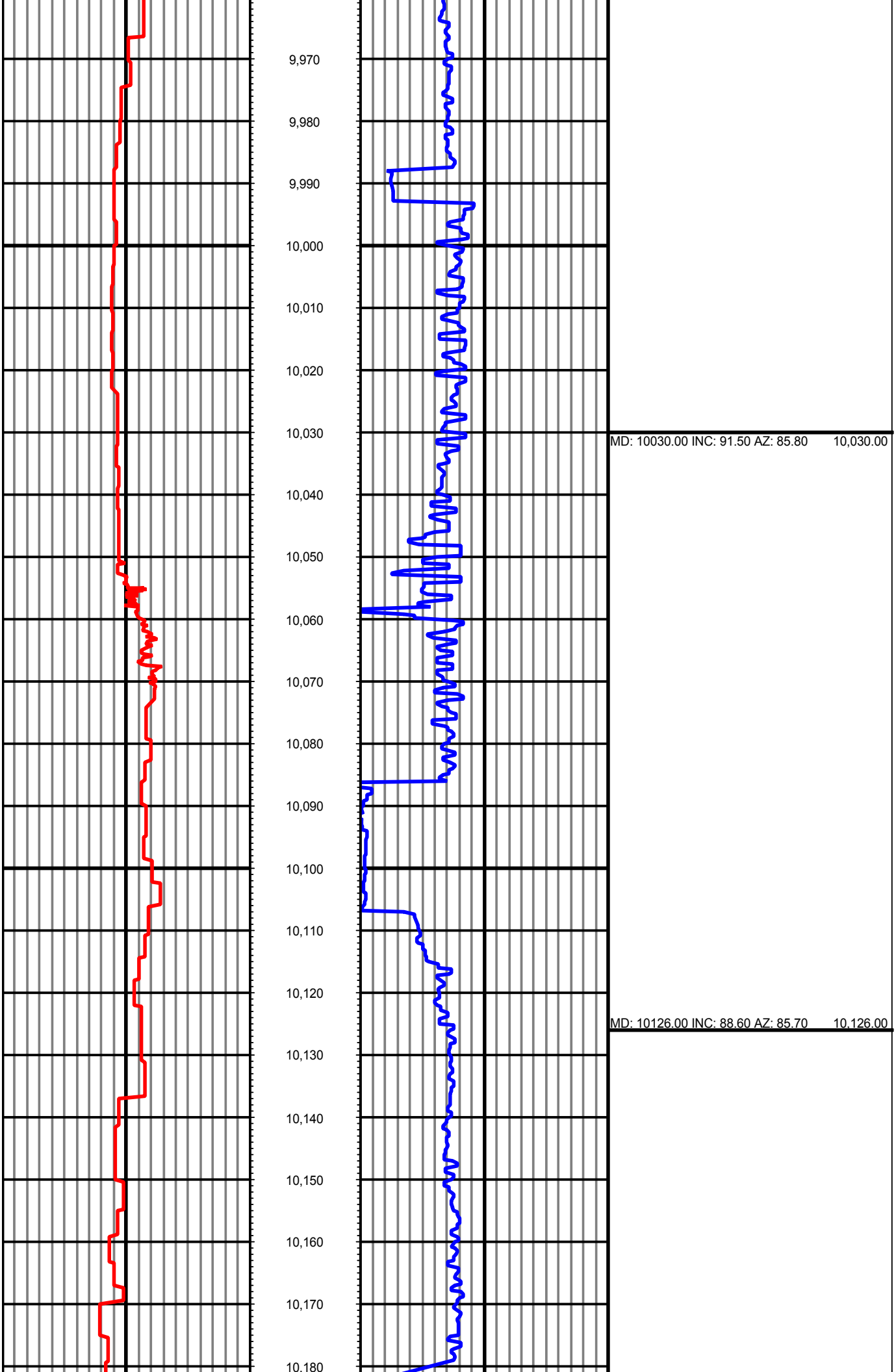
9,960

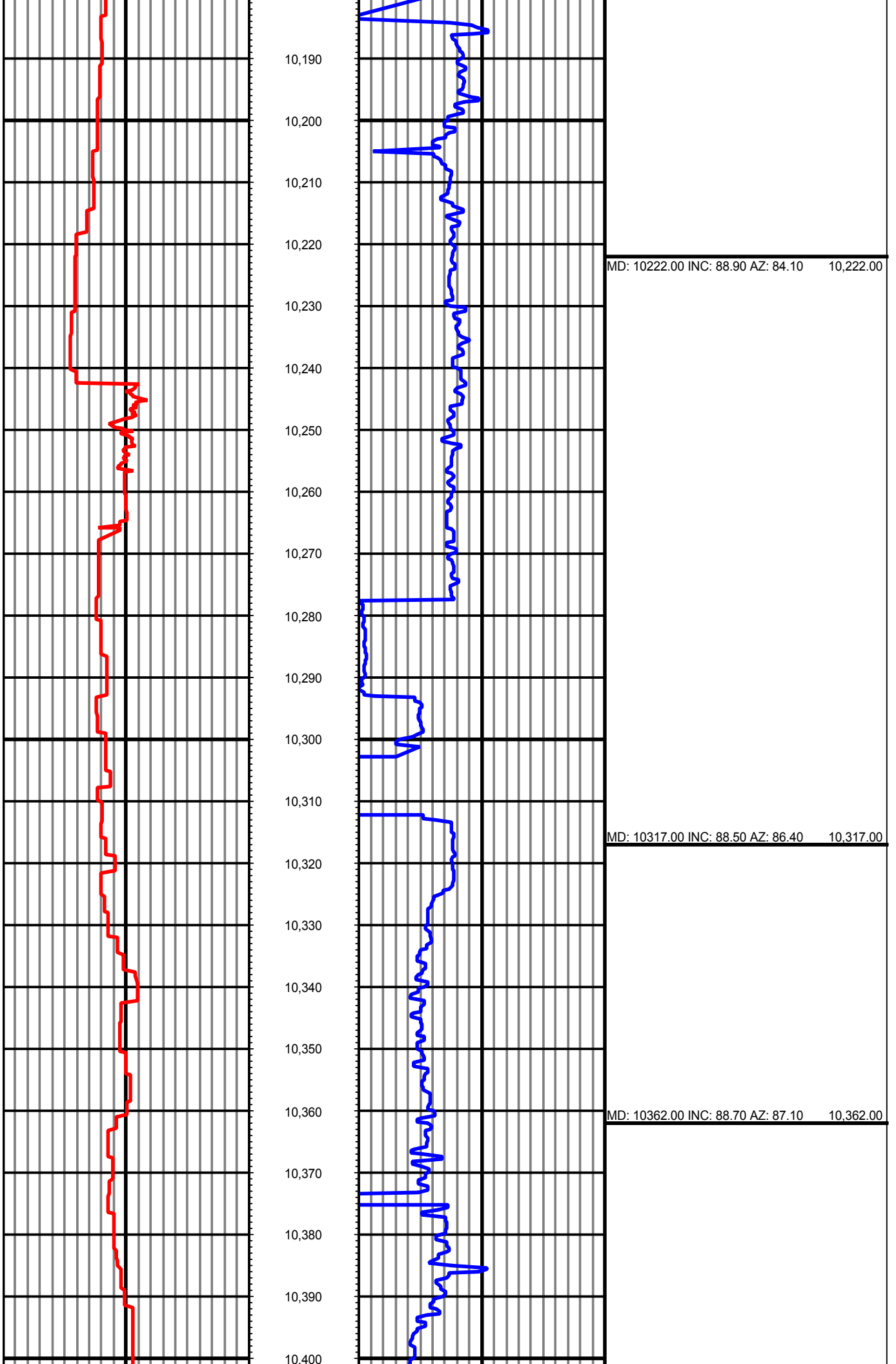


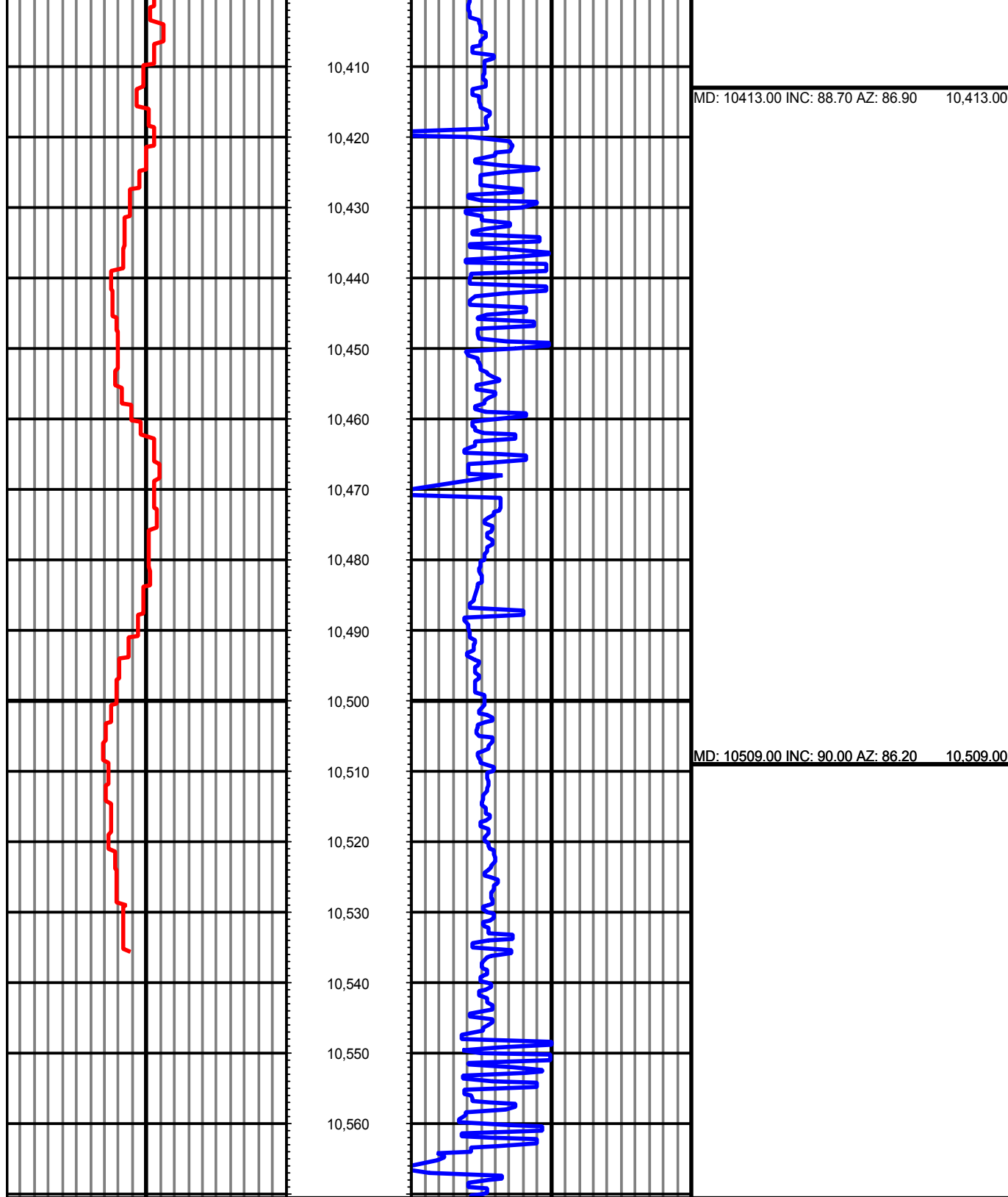
MD: 9744.00 INC: 91.10 AZ: 89.30 9,744.00

MD: 9839.00 INC: 89.10 AZ: 88.30 9,839.00

MD: 9935.00 INC: 89.90 AZ: 88.30 9,935.00







0.00 Counts(mG) 150.00

MD

0.00 ROP(FT/HR) 600.00

Surveys (MD/INC/AZ)

FT