



RADIAL CEMENT BOND LOG GAMMA RAY CCL

Company Bill Barrett Corporation
Well CVR 5-63-32-3340BH
Field NE Wattenberg
County WELD State CO

Location: API # : 05-123-36899
NW/SW
SEC 32 TWP 5N RGE 63W
Permanent Datum G.L. Elevation 4578
Log Measured From K.B. 23'
Drilling Measured From K.B.
Other Services
K.B. 4601
D.F. 4600
G.L. 4578

Date 7-23-2013

Run Number	ONE
Depth Driller	10560
Depth Logger	5800
Bottom Logged Interval	5800
Top Log Interval	SURFACE
Open Hole Size	7"
Type Fluid	WATER
Density / Viscosity	NA
Max. Recorded Temp.	200
Estimated Cement Top	142
Time Well Ready	NA
Time Logger on Bottom	NA
Equipment Number	7770
Location	GREELEY
Recorded By	C.JONES
Witnessed By	M.BEAUXIS

Borehole Record				Tubing Record			
Run Number	Bit	From	To	Size	Weight	From	To
ONE	24	15	75				
TWO	13.5	75	845				
THREE	8 3/4	845	6422				
FOUR	6 1/8	10570	10570				
Casing Record	Size			Wgt/Ft	Top		Bottom
Surface String							
Prot. String	7			26#	0		5709
Production String	4.5			11.6#	5713		10560
Liner	4.5				5709		5713

<<< Fold Here >>>

All interpretations are opinions based on inferences from electrical or other measurements and we cannot and do not guarantee the accuracy or correctness of any interpretation, and we shall not, except in the case of gross or willful negligence on our part, be liable or responsible for any loss, costs, damages, or expenses incurred or sustained by anyone resulting from any interpretation made by any of our officers, agents or employees. These interpretations are also subject to our general terms and conditions set out in our current Price Schedule.

Comments

RAN C.B.L. TO VERIFY CEMENT BOND
TIED INTO LINER TOP @5709'

THANK YOU FOR USING WARRIOR ENERGY SERVICES!

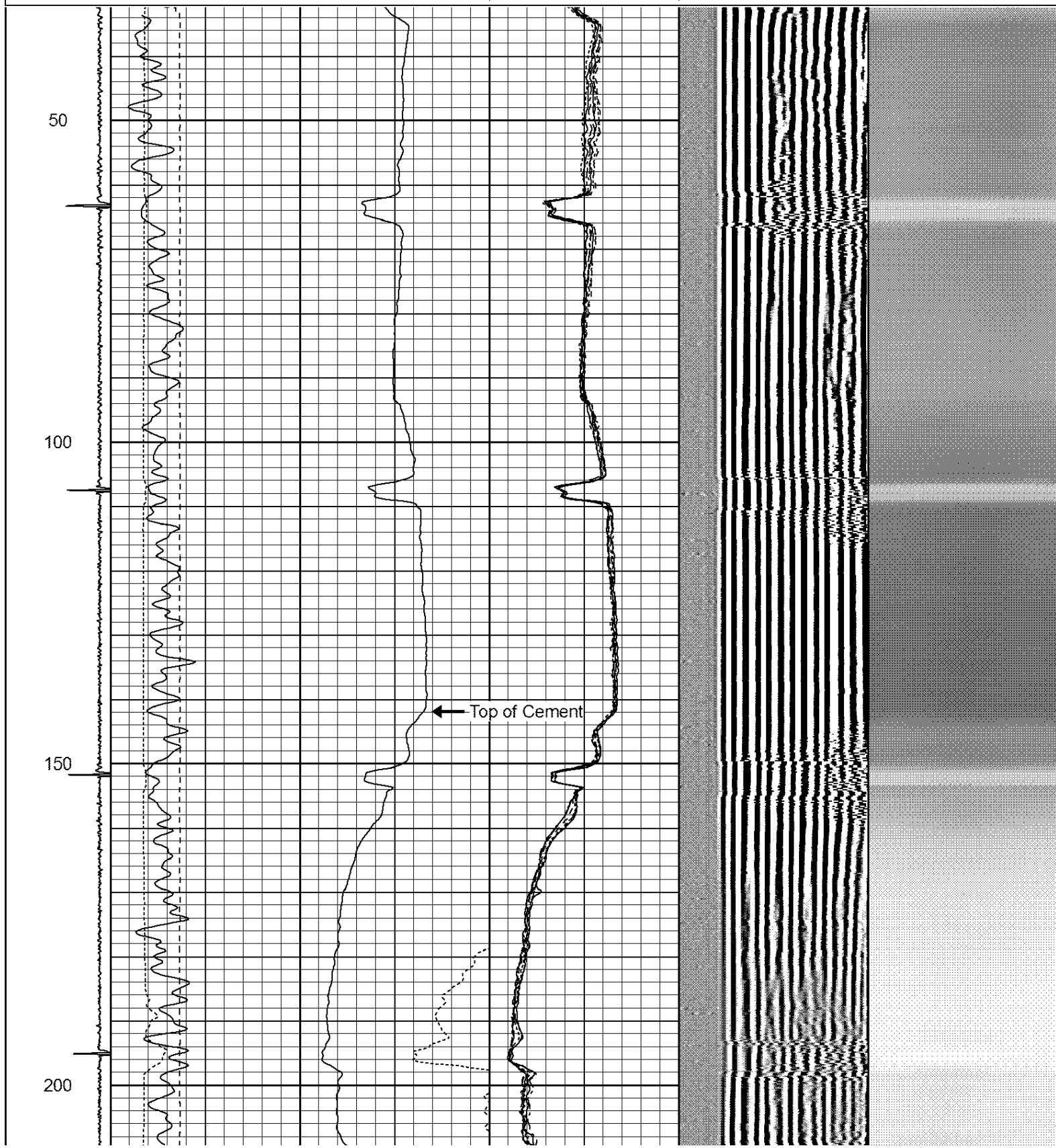
Sensor	Offset (ft)	Schematic	Description	Len (ft)	OD (in)	Wt (lb)

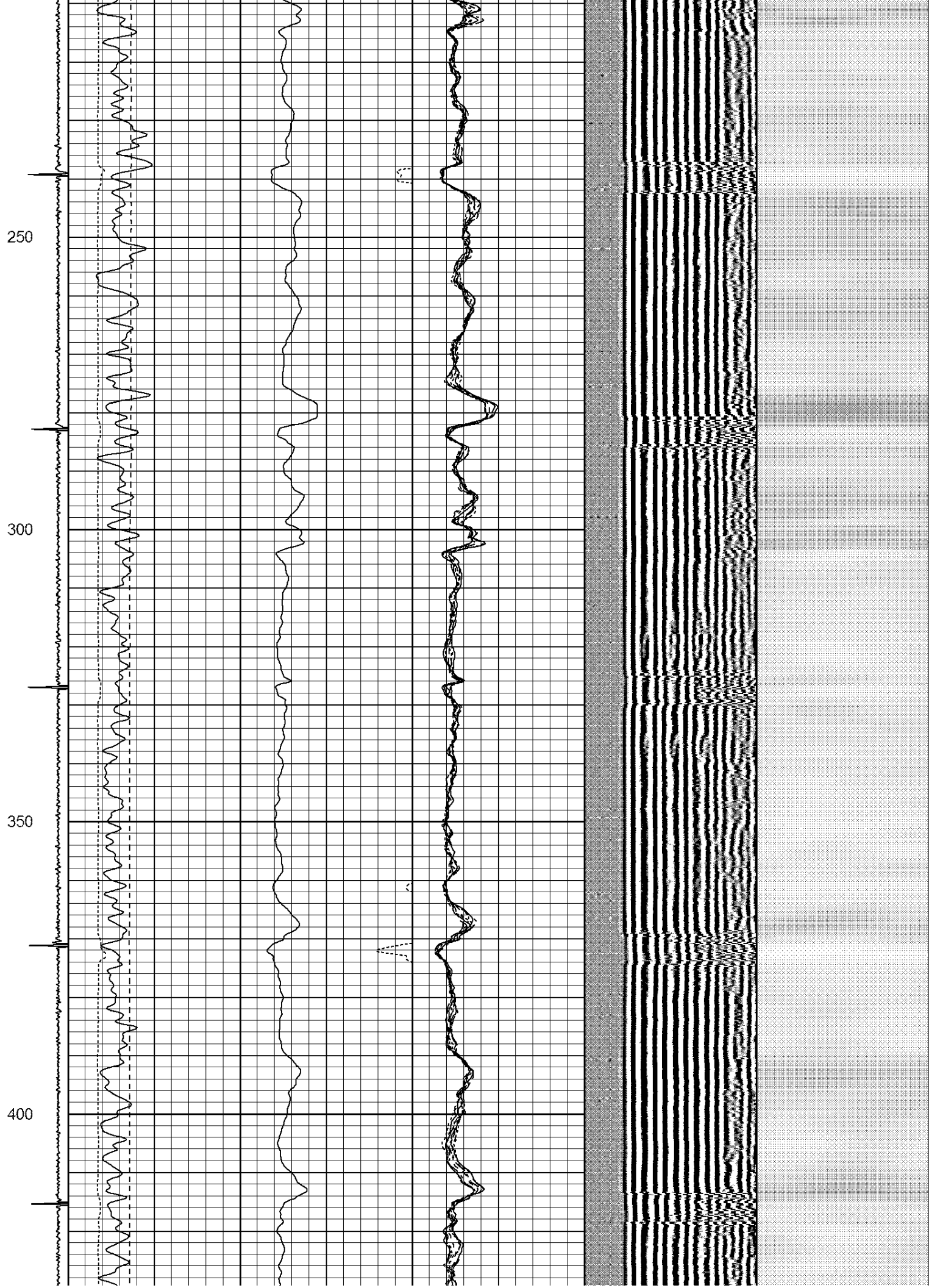
Tool Joint	Tool Joint Length (ft)	Tool Joint Weight (lb)	Tool Joint O.D. (in)	Tool Joint Type	Tool Joint Description	Tool Joint Weight (lb)	Tool Joint O.D. (in)	Tool Joint Type	Tool Joint Description
HEADVOLT	16.25								
IntTemp	14.83								
WVFS3FT	11.58								
WVFCAL	11.58								
WVFS1	11.58								
WVFS2	11.58								
WVFS3	11.58								
WVFS4	11.58								
WVFS5	11.58								
WVFS6	11.58								
WVFS7	11.58								
WVFS8	11.58								
WVFS5FT	10.58								
CNLSC	6.00								
CNSSC	5.17								
CCL	3.64								
GR	0.90								
PTS275	2.83	2.75							
RBT-Probe (Base)	8.92	2.75	90.00		Probe Radii Bond Tool with Digital Telemetry				
CNT-Probe_B (275)	3.00	2.75	40.00		6 bow centralizer				
GR-Probe (275)	4.33	2.75	30.00		Probe 2.75"				

Dataset: cvr 056332 334obh.db: field/well/run1/pass5
Total Length: 19.08 ft
Total Weight: 160.00 lb
O.D. 2.75 in

Database File: cvr 056332 334obh.db
Dataset Pathname: pass5
Presentation Format: ips_rbt

-9	CCL	1	200	TT (usec)	800	0	AMP (mV)	100	0	AMPS1	100	200	VDL	1200	1	Cement Map	8
			0	GR (GAPI)	200	0	AMPx5 (mV)	20	0	AMPS2	100				1		100
			200	GR (GAPI)	400				0	AMPS4	100						
			IntTemp						0	AMPS5	100						
			140	(degF)	210				0	AMPS6	100						
			0	LSPD (ft/min)	250				0	AMPS7	100						
									0	AMPS8	100						



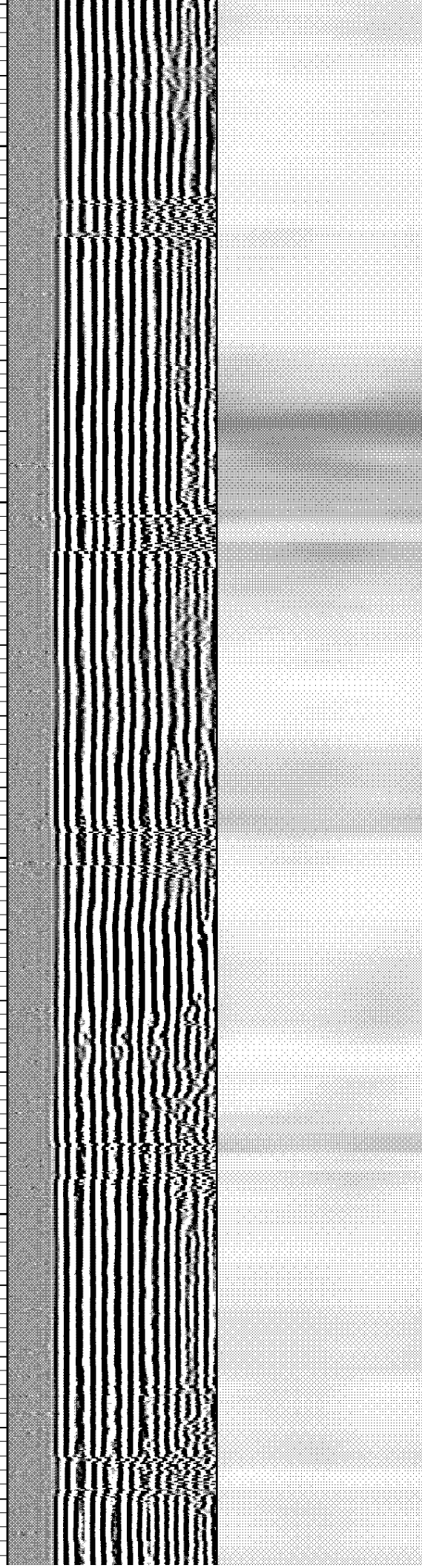


450

500

550

600



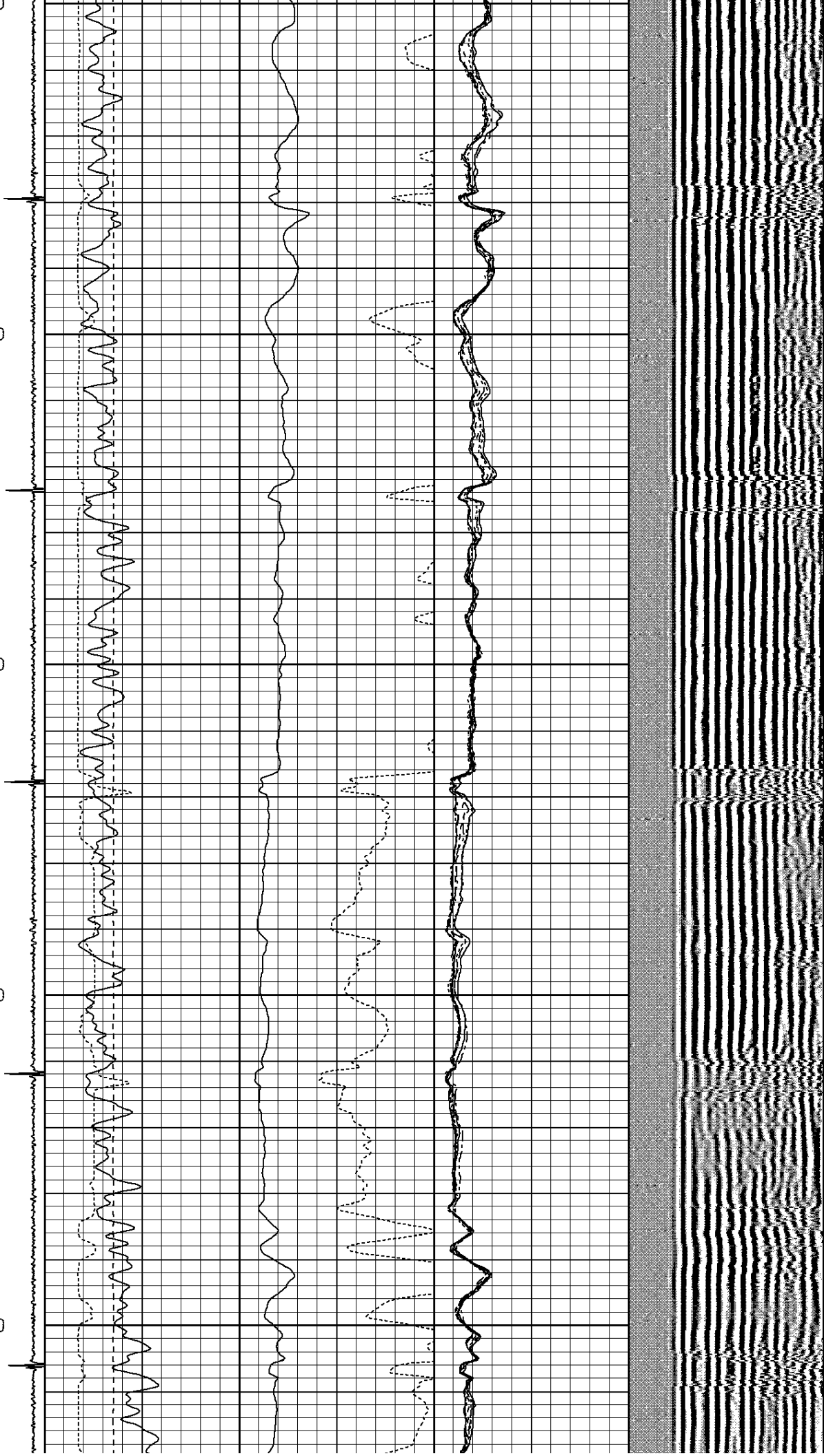
650

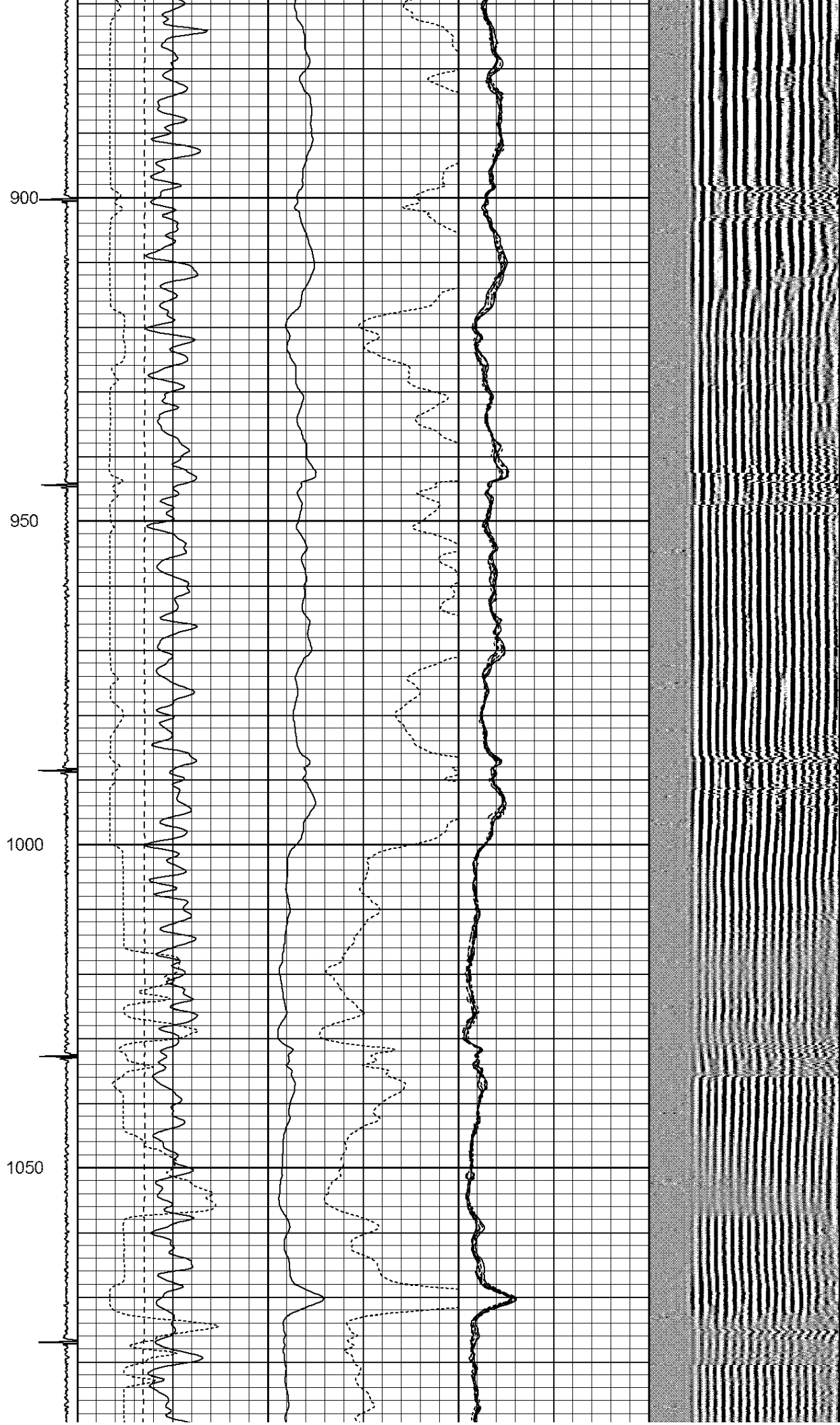
700

750

800

850





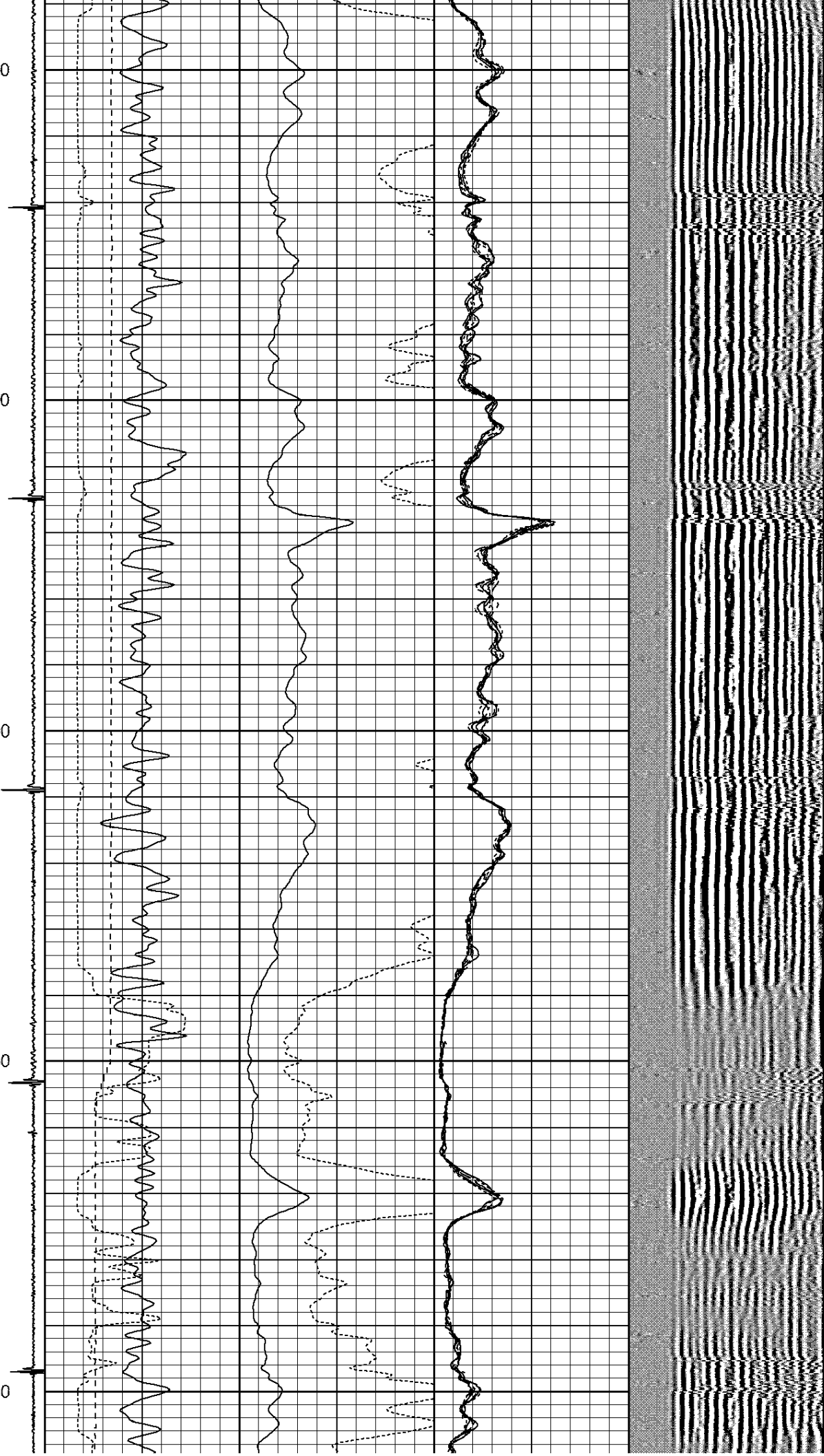
1100

1150

1200

1250

1300

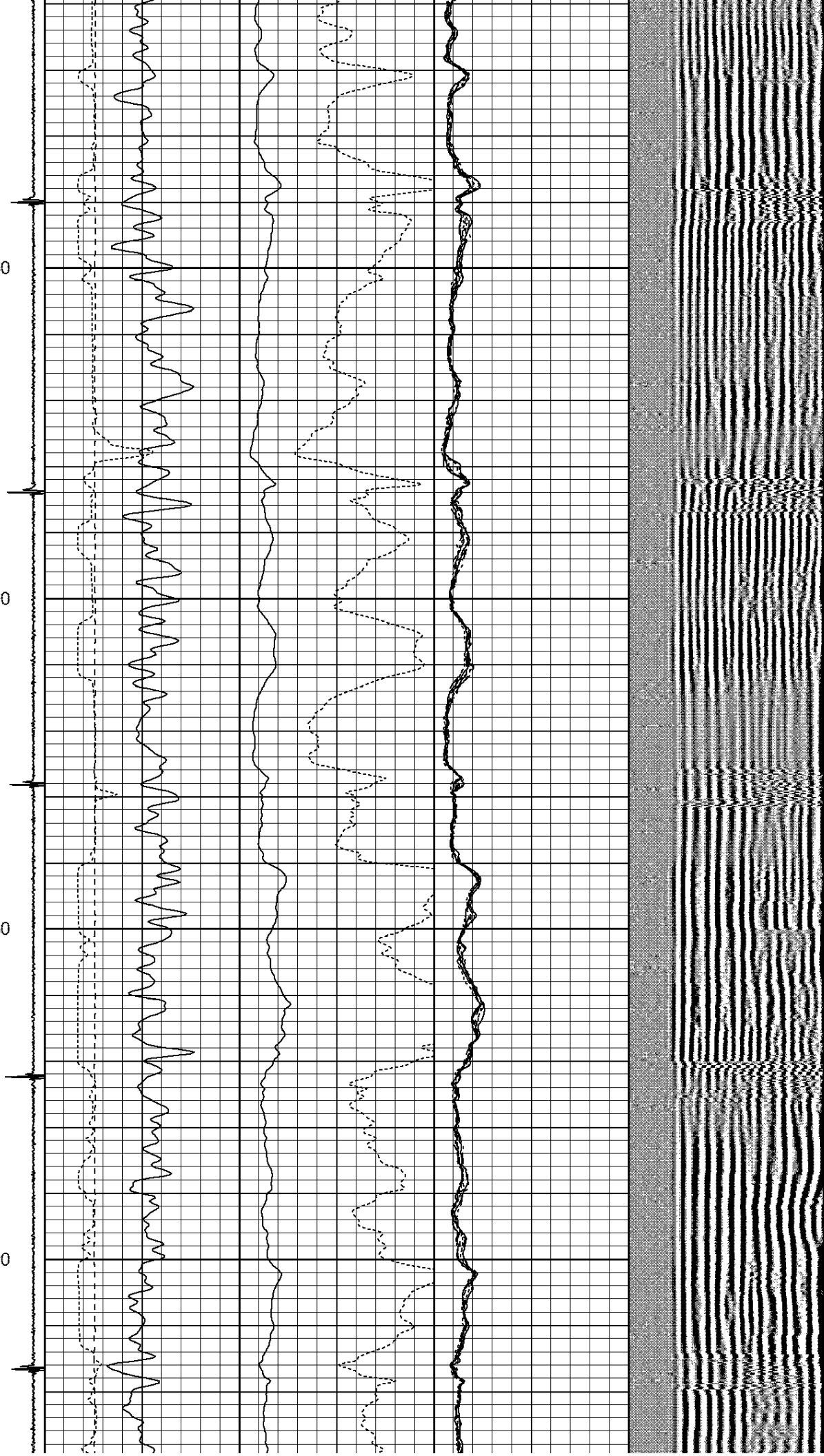


1350

1400

1450

1500

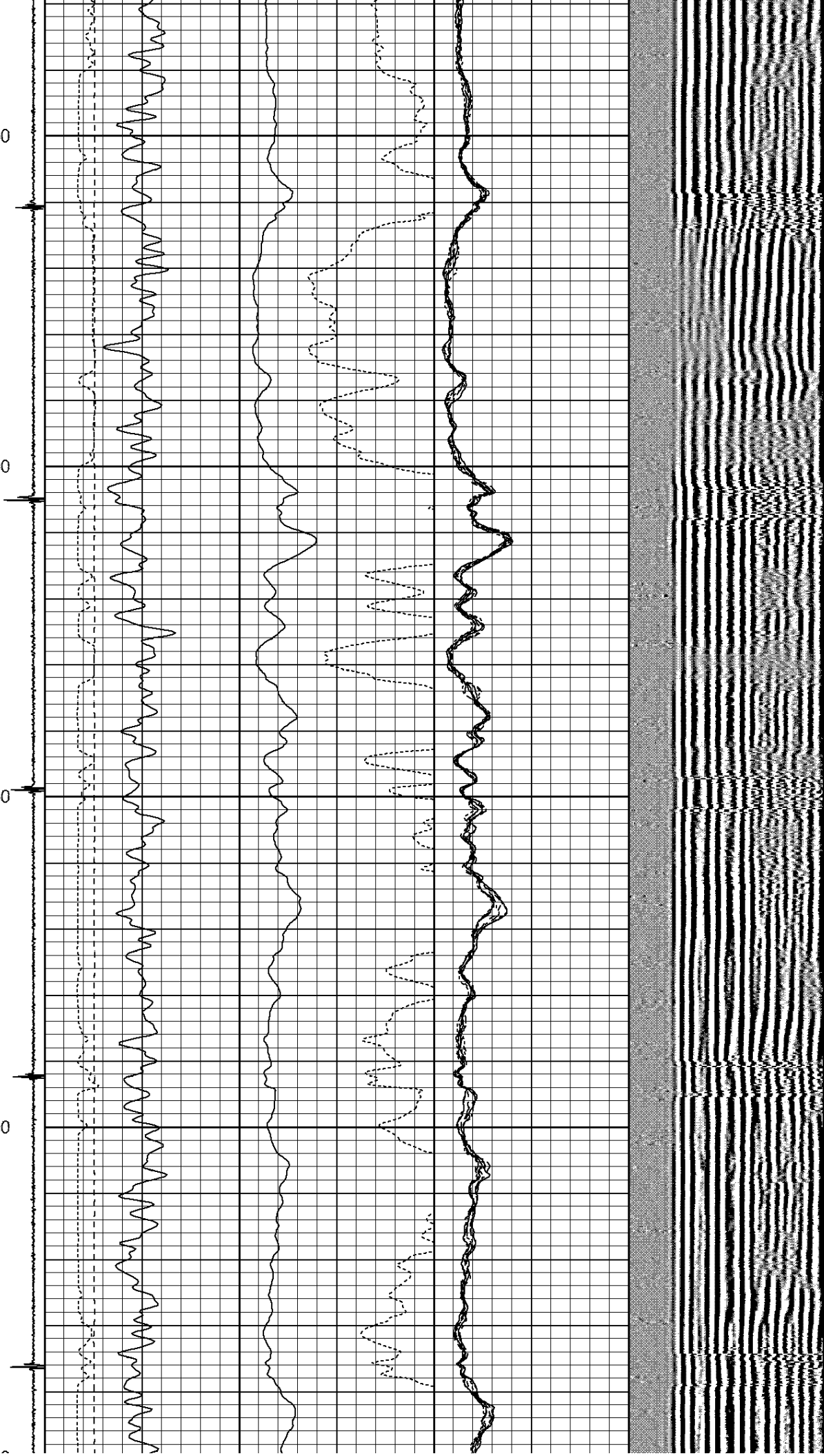


1550

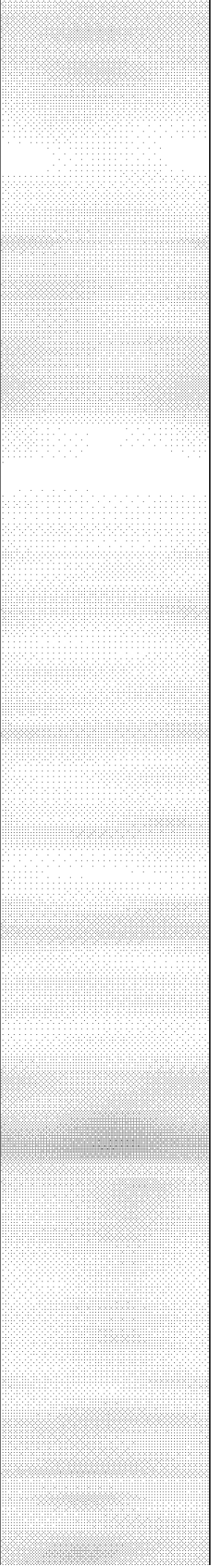
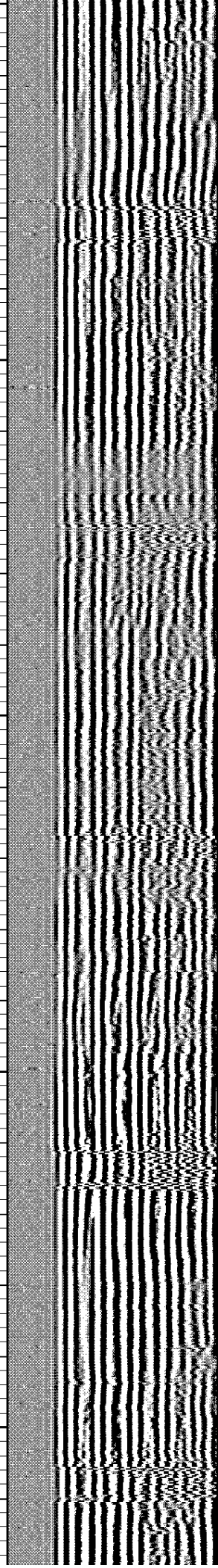
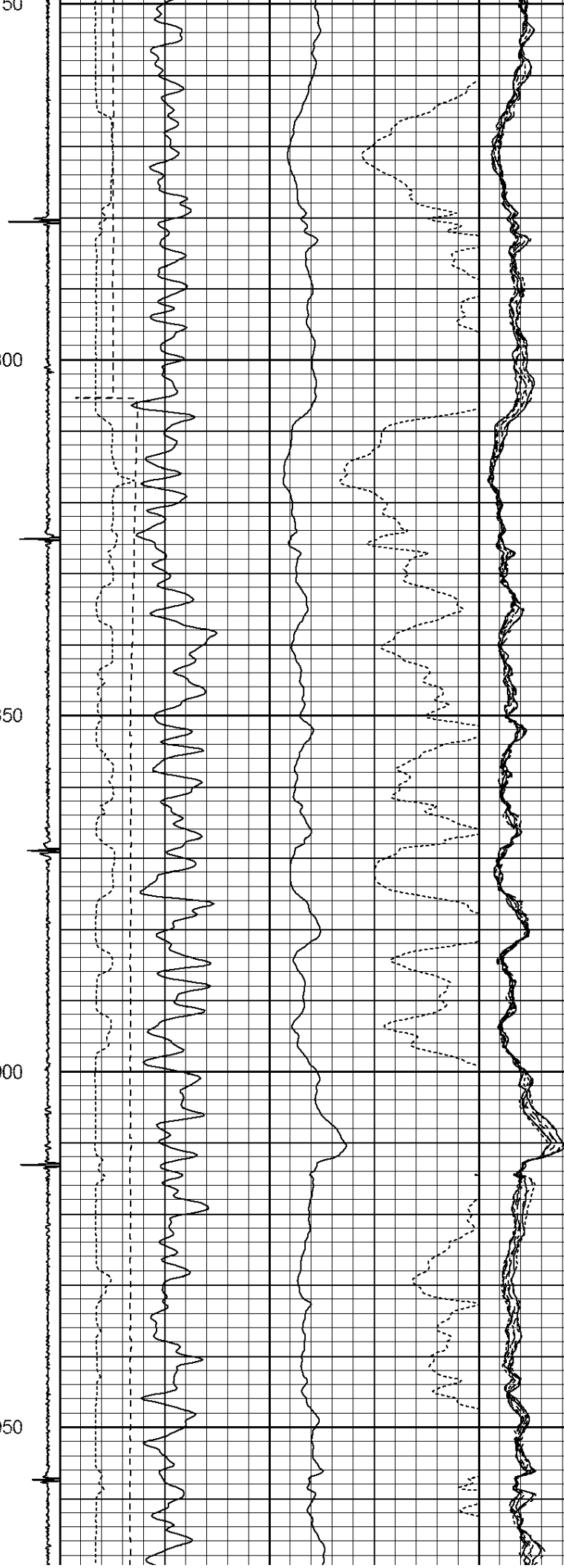
1600

1650

1700



1750
1800
1850
1900
1950

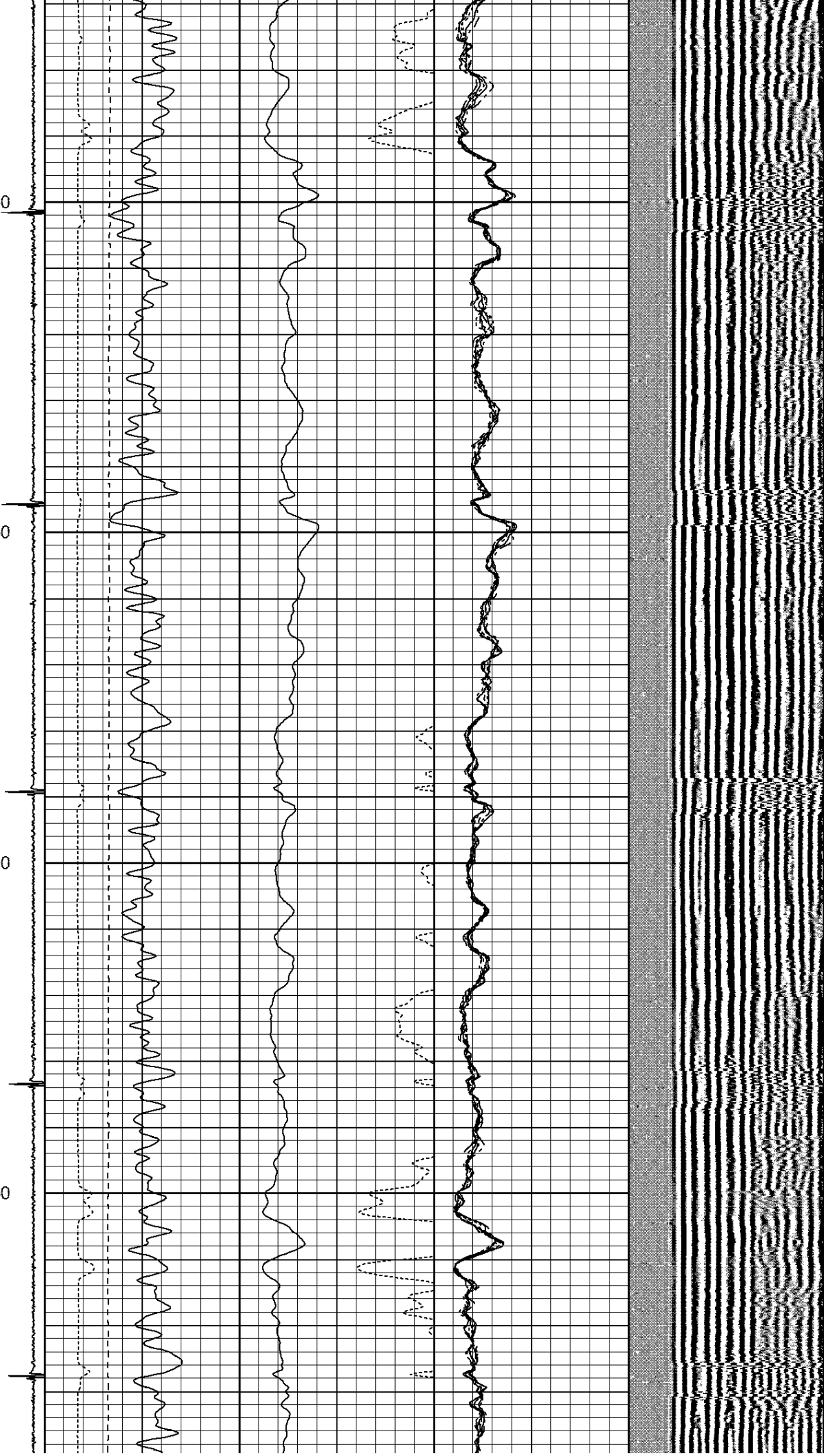


2000

2050

2100

2150



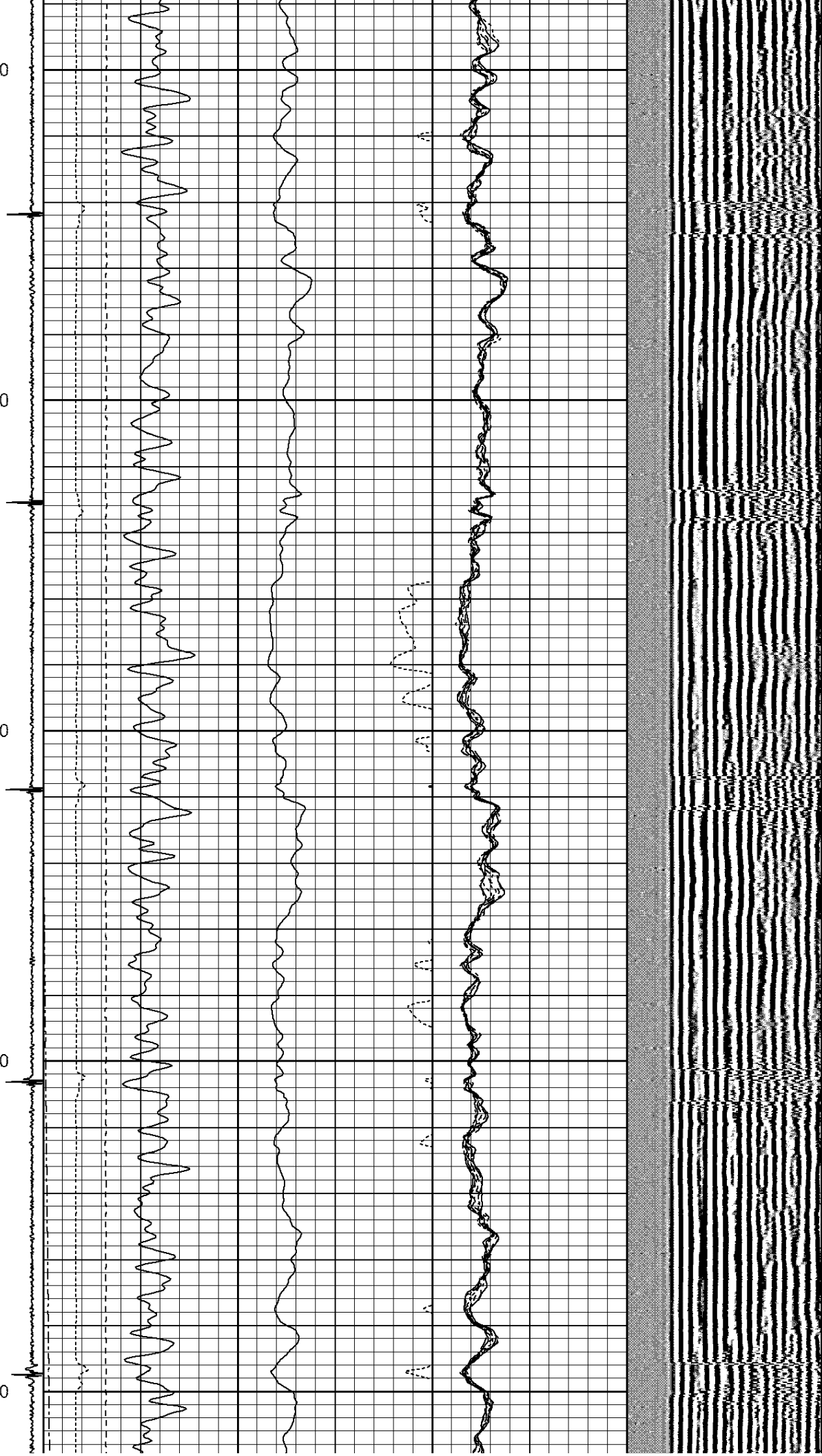
2200

2250

2300

2350

2400

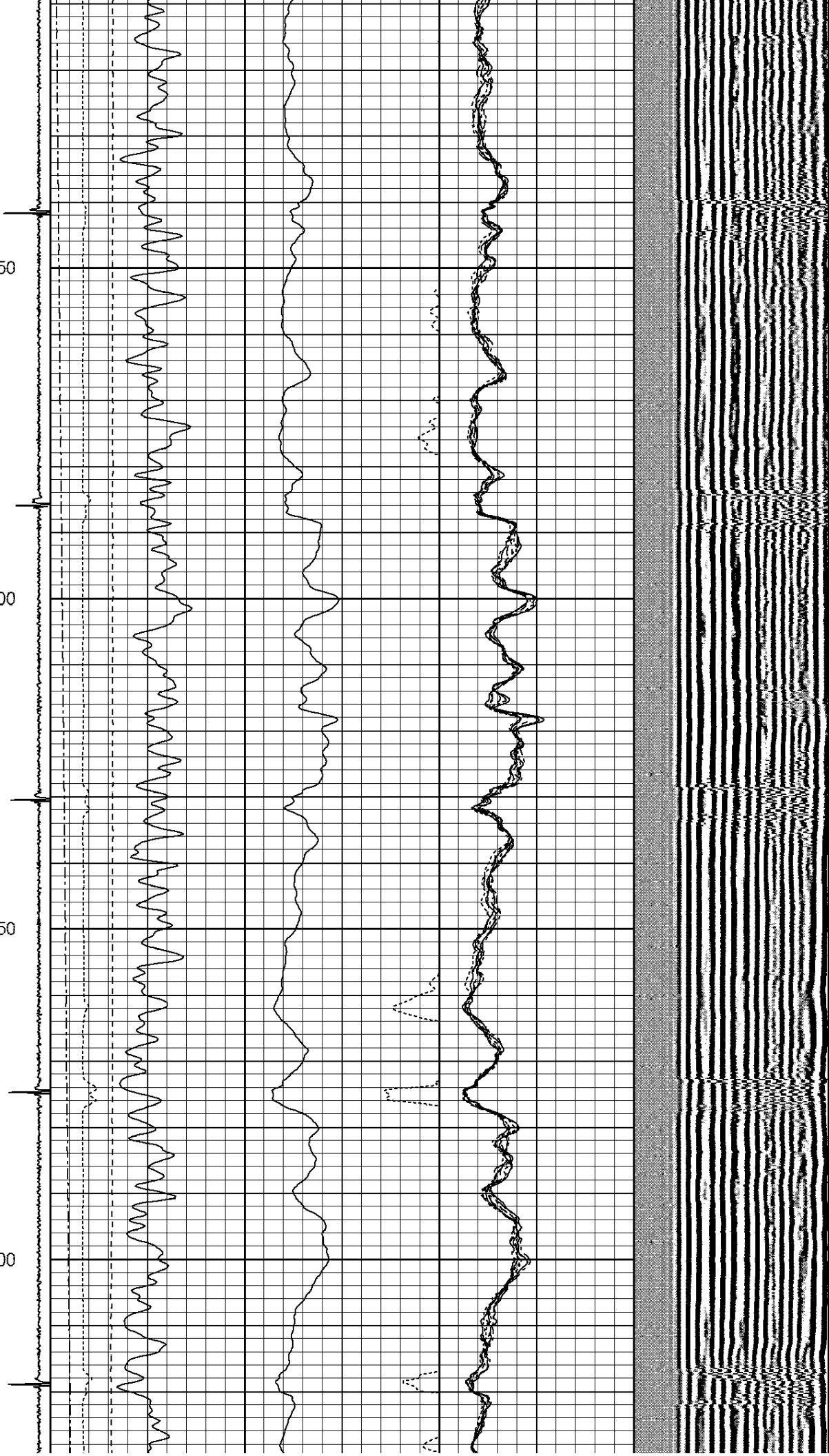


2450

2500

2550

2600

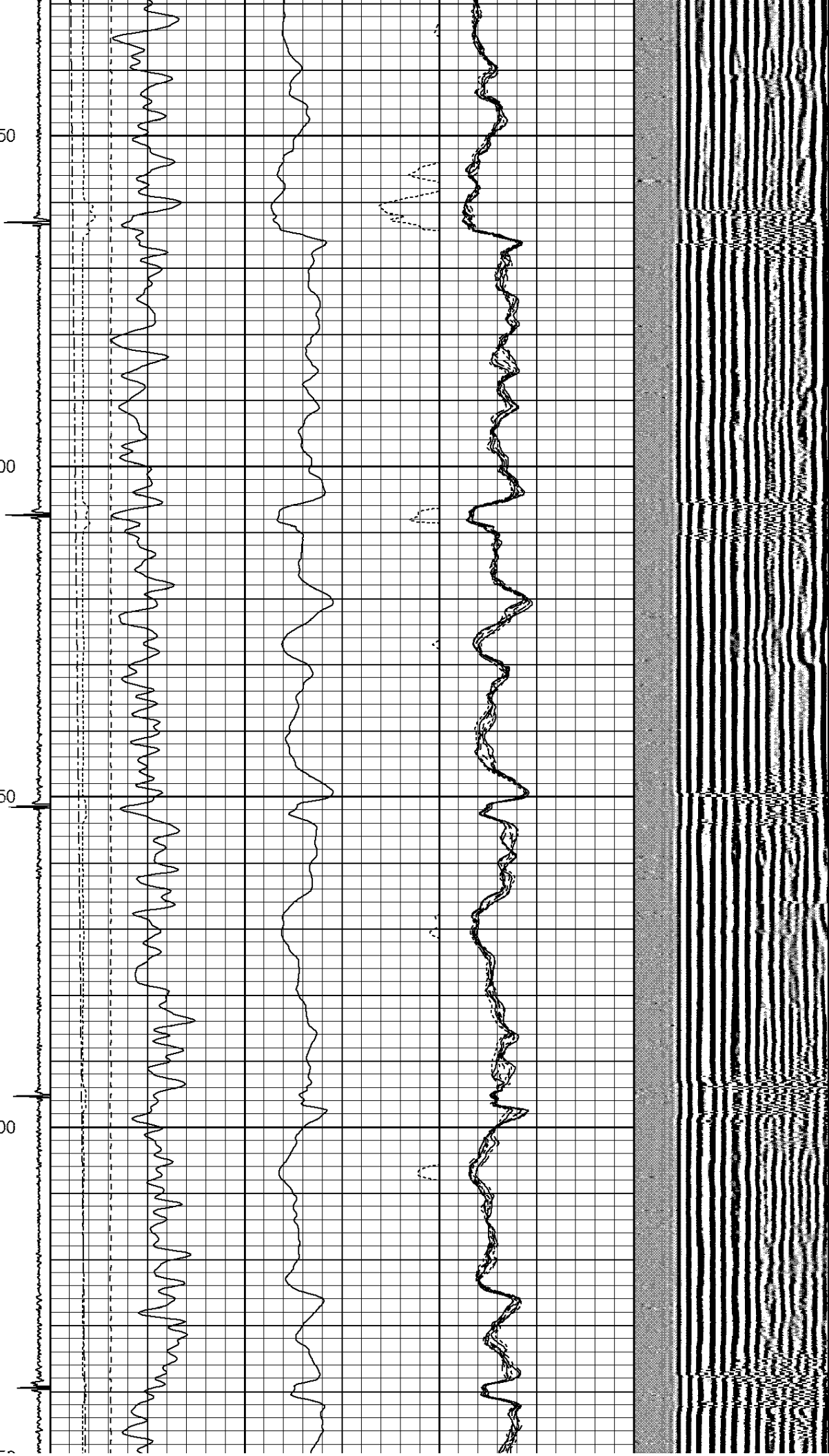


2650

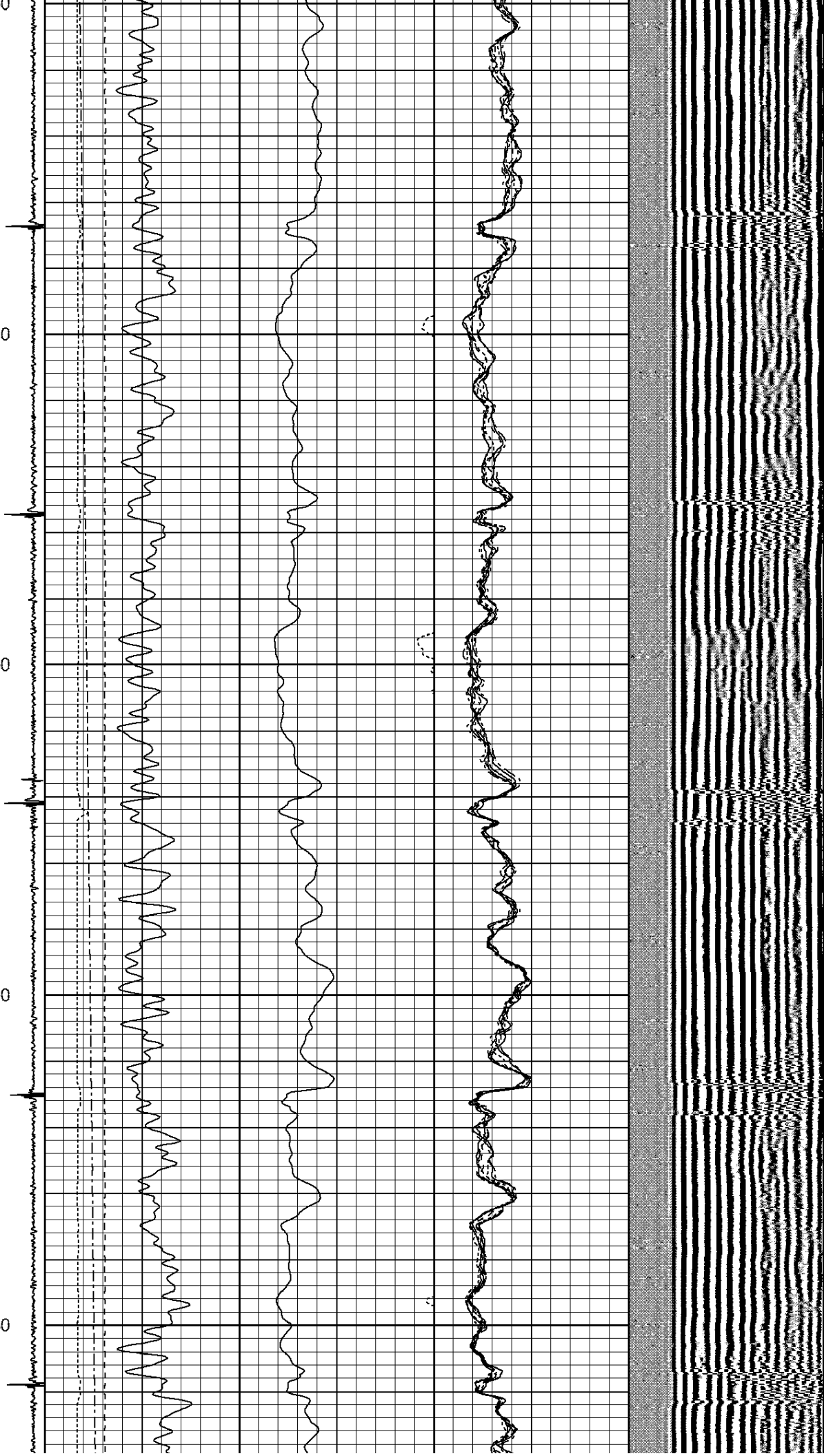
2700

2750

2800



2850
2900
2950
3000
3050

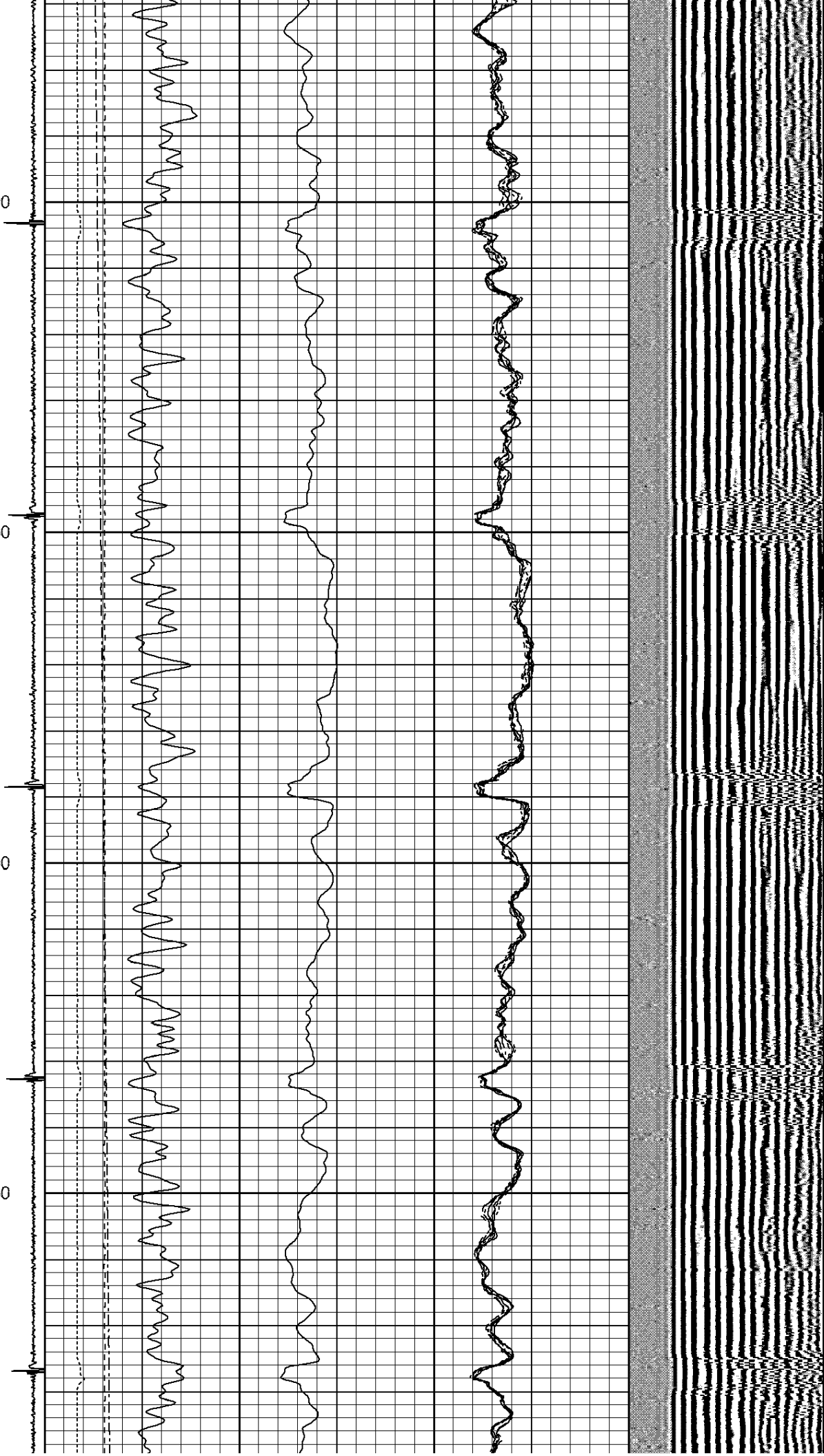


3100

3150

3200

3250



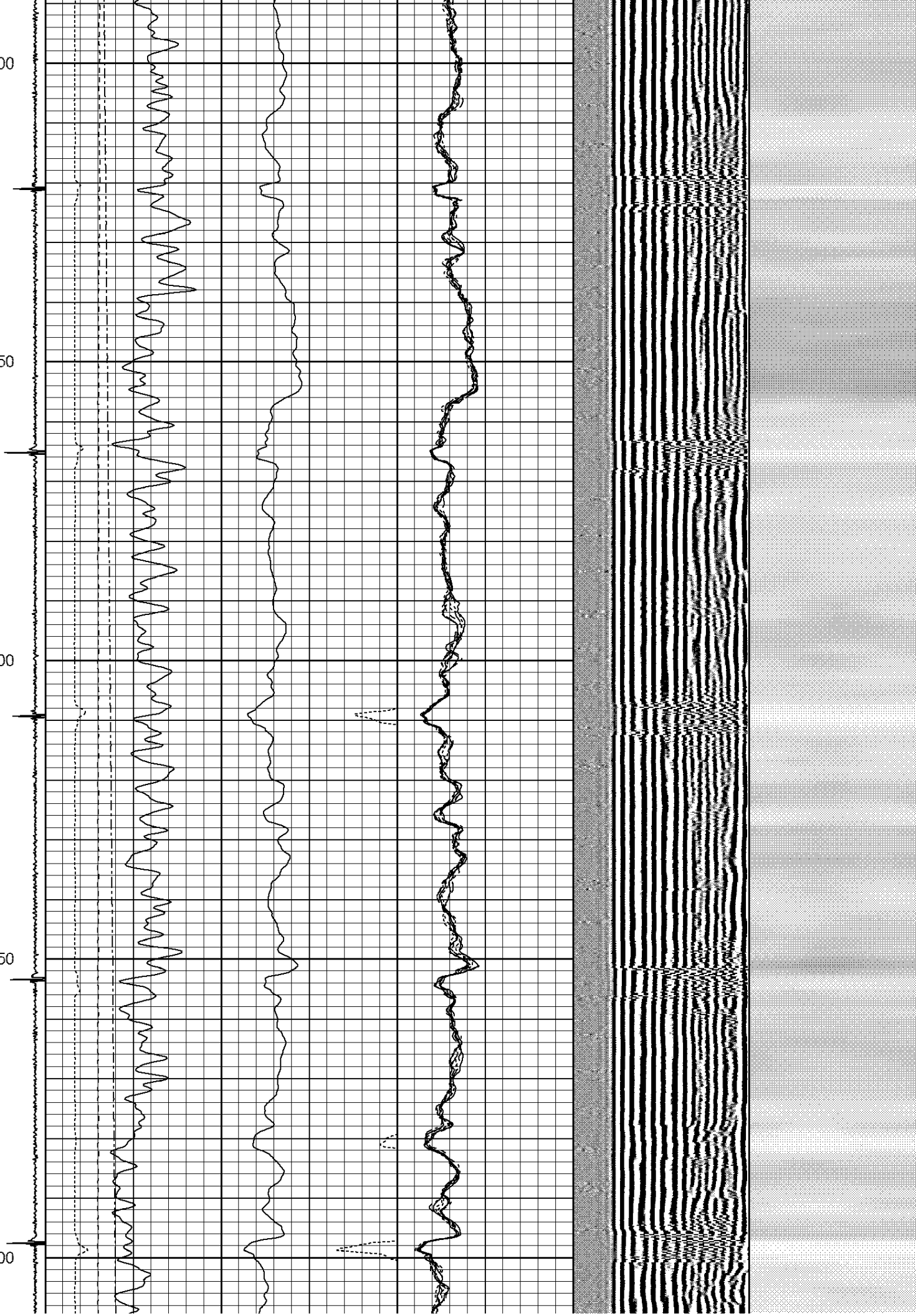
3300

3350

3400

3450

3500

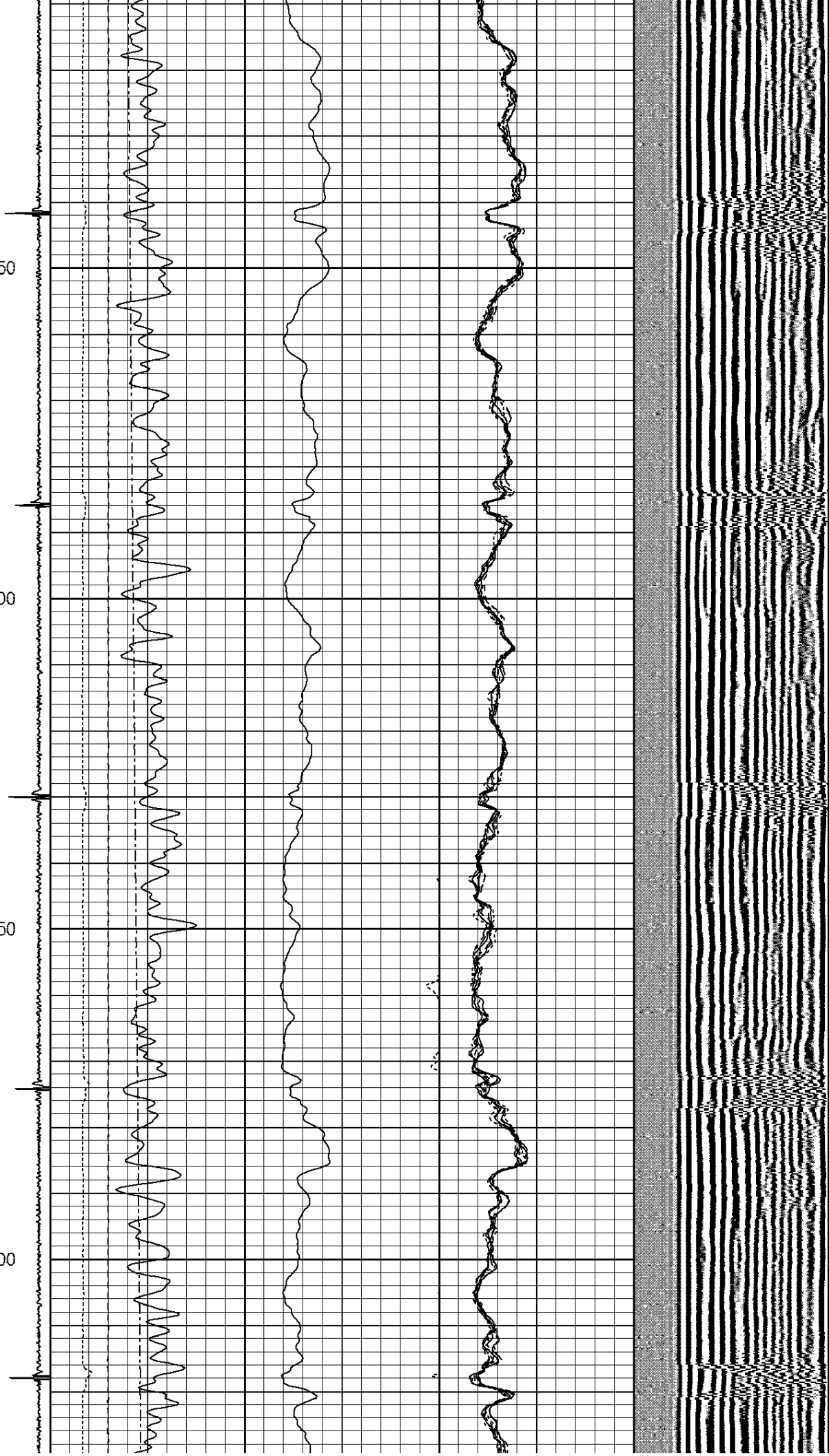


3550

3600

3650

3700

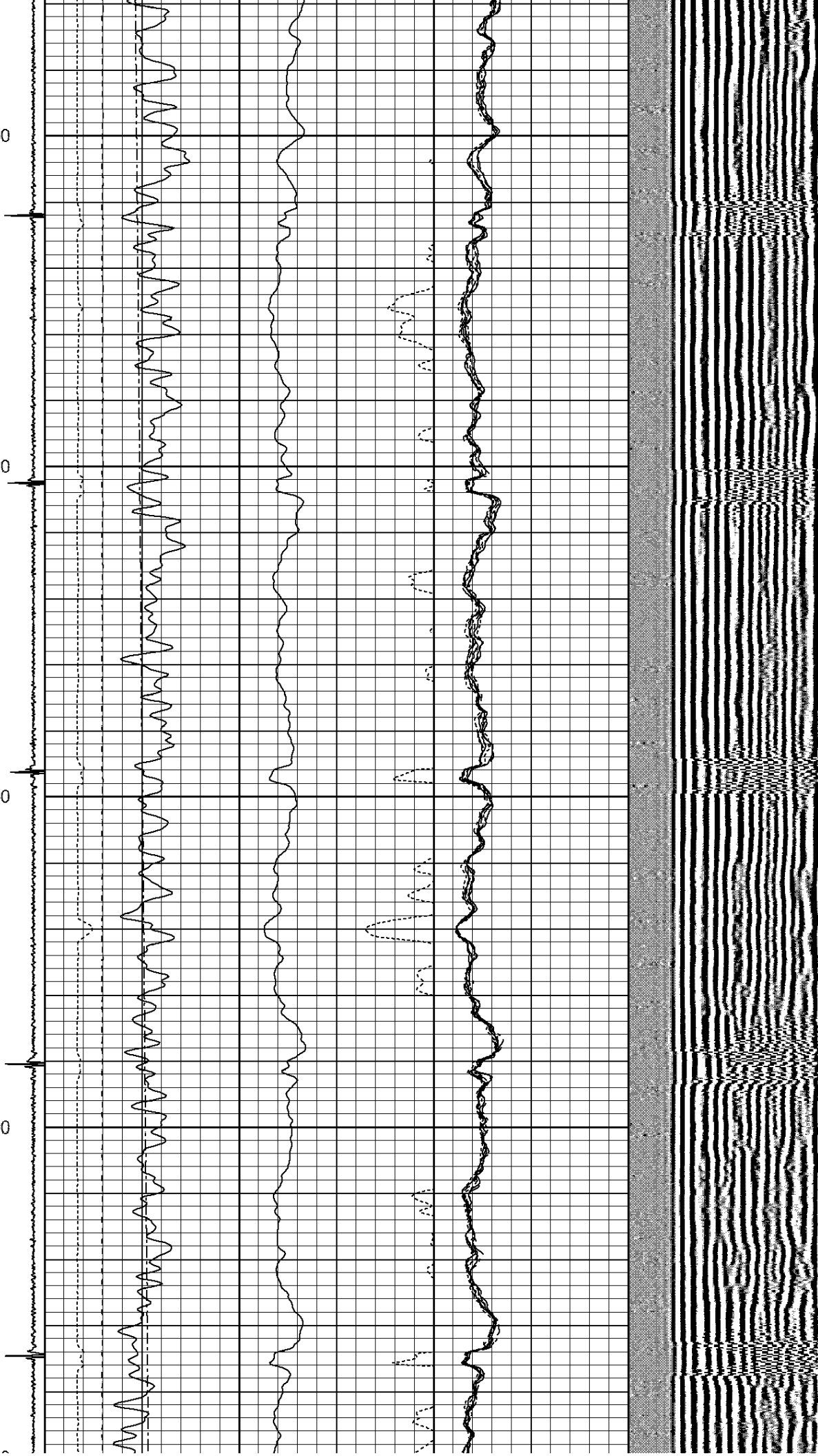


3750

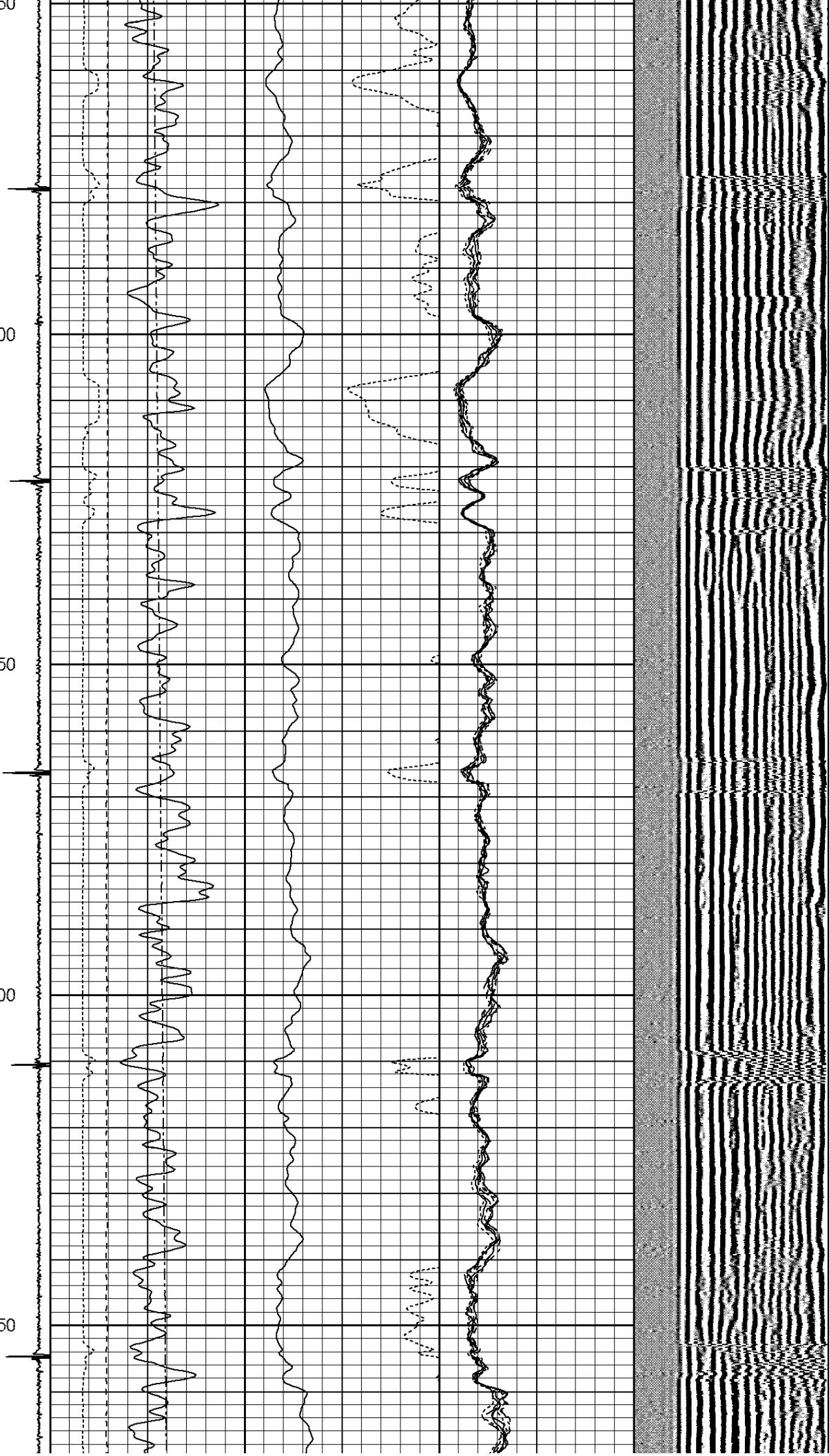
3800

3850

3900



3950
4000
4050
4100
4150

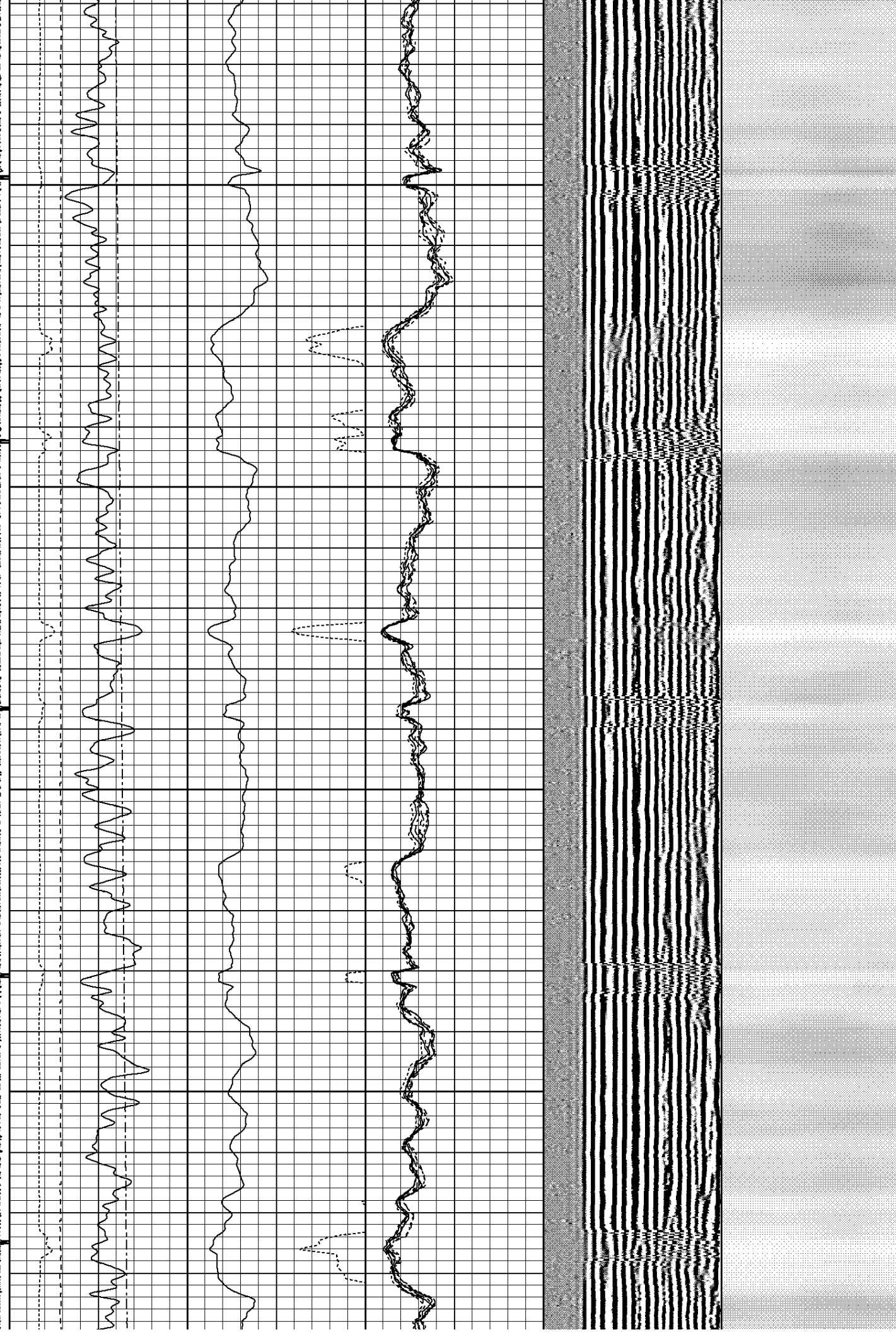


4200

4250

4300

4350



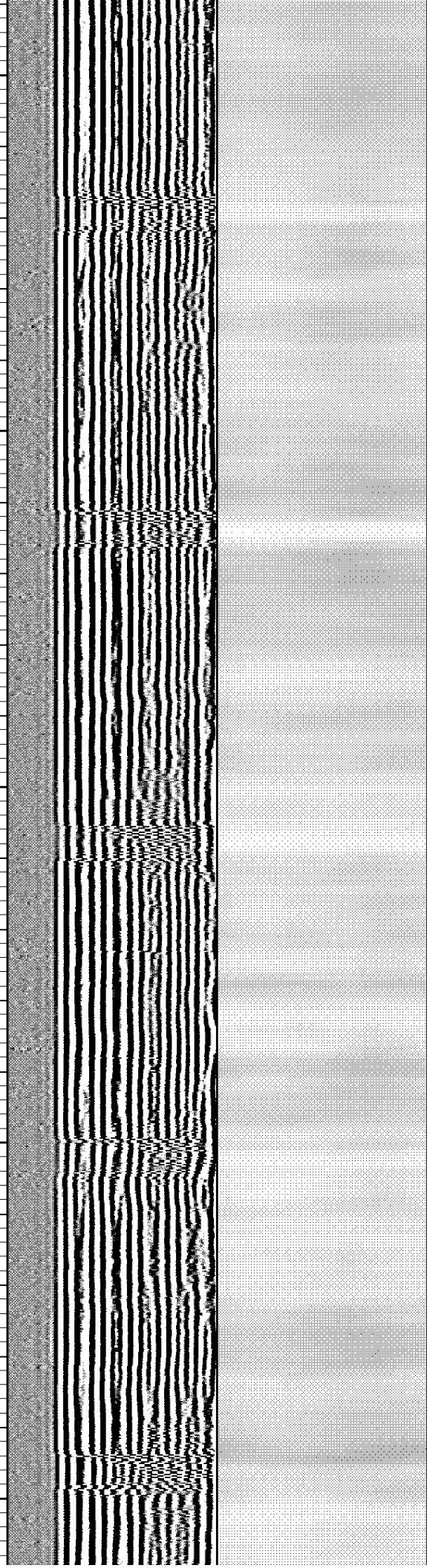
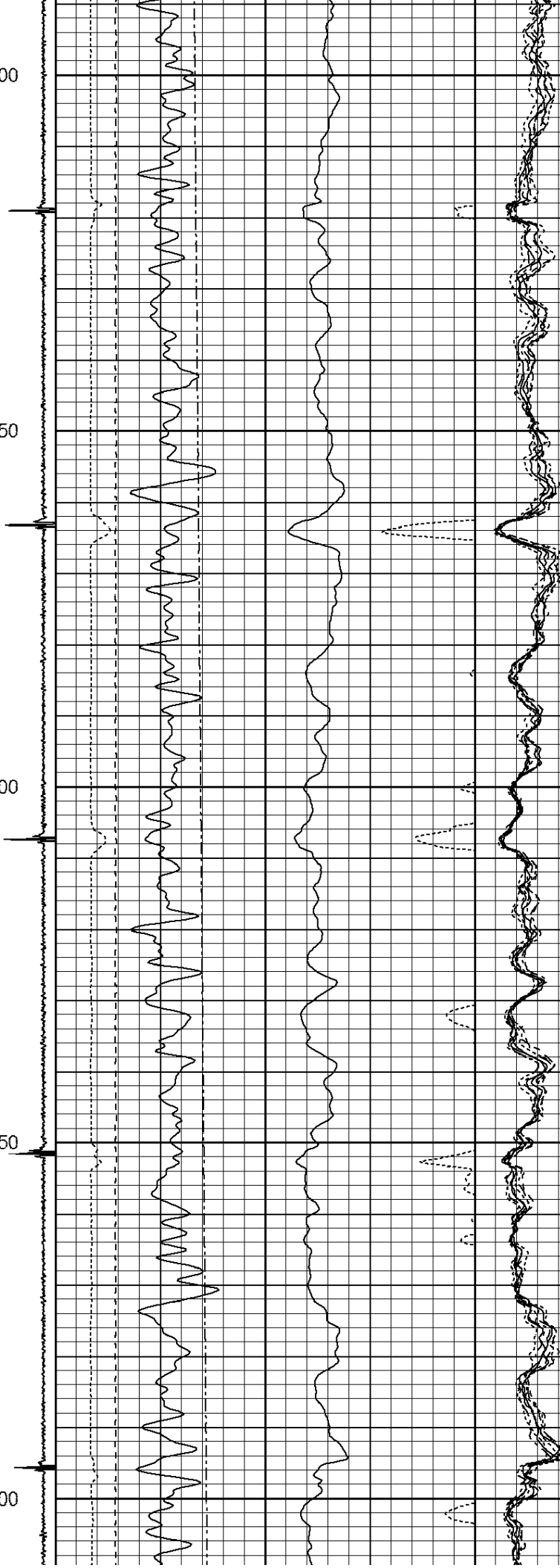
4400

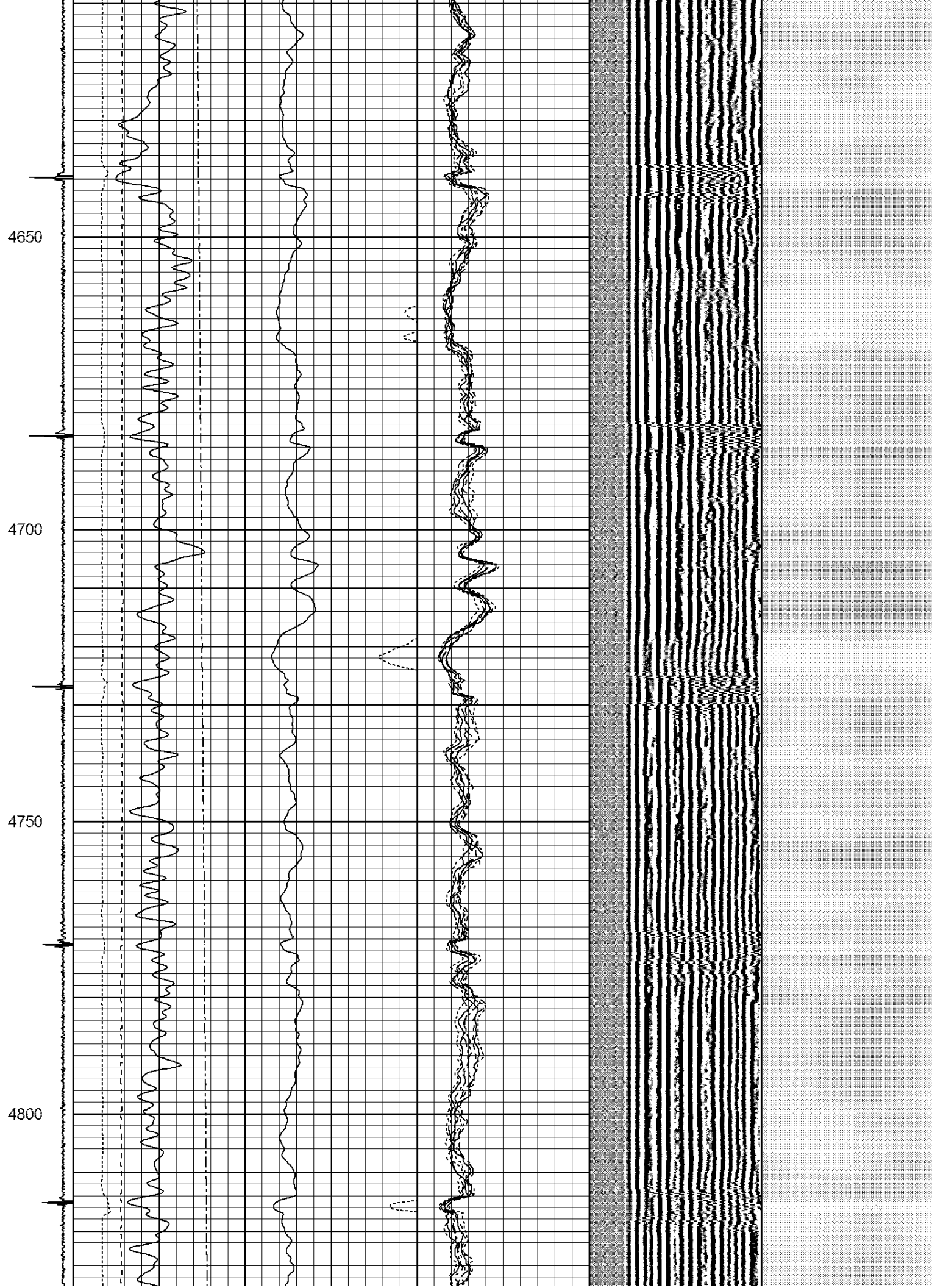
4450

4500

4550

4600



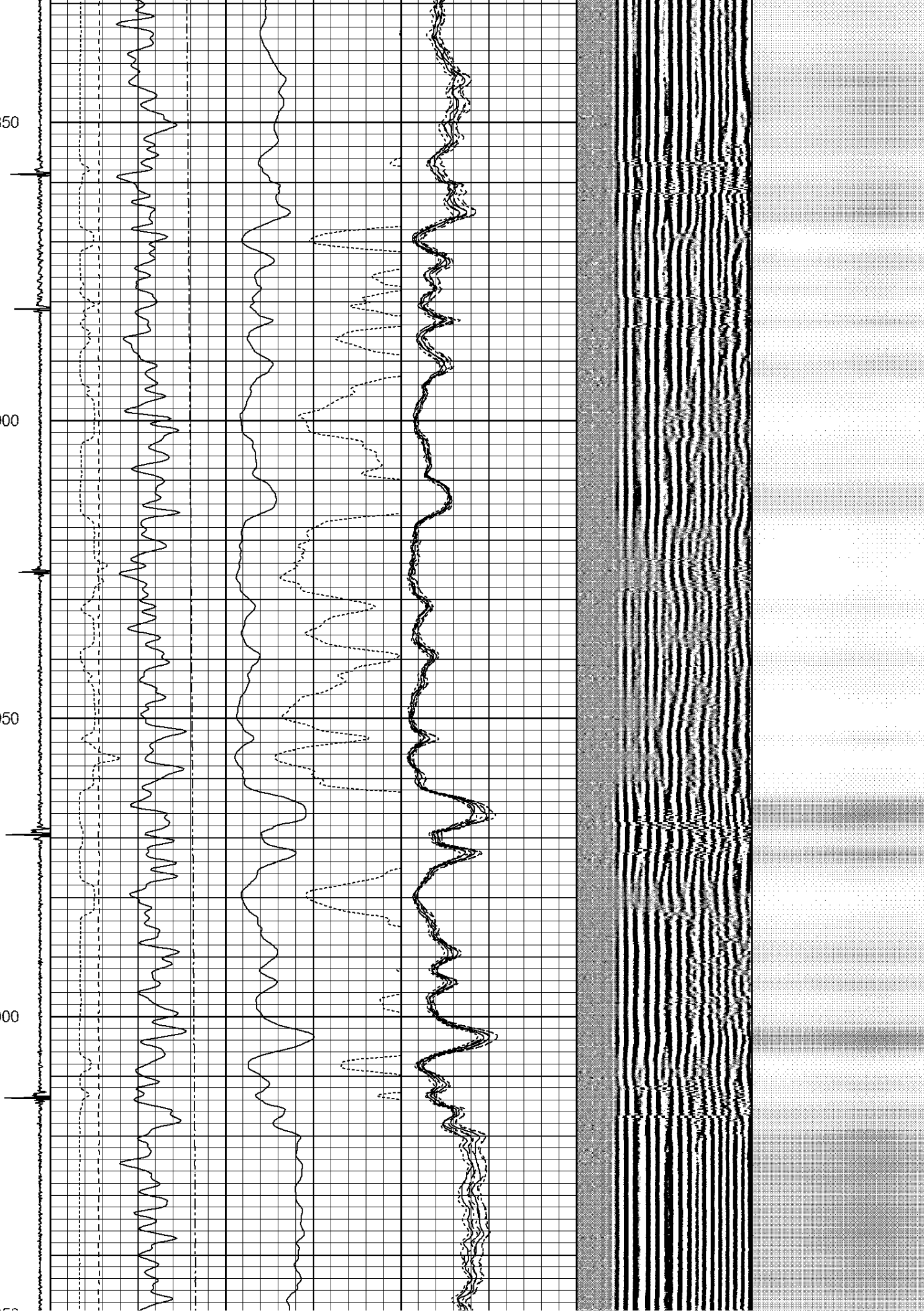


4850

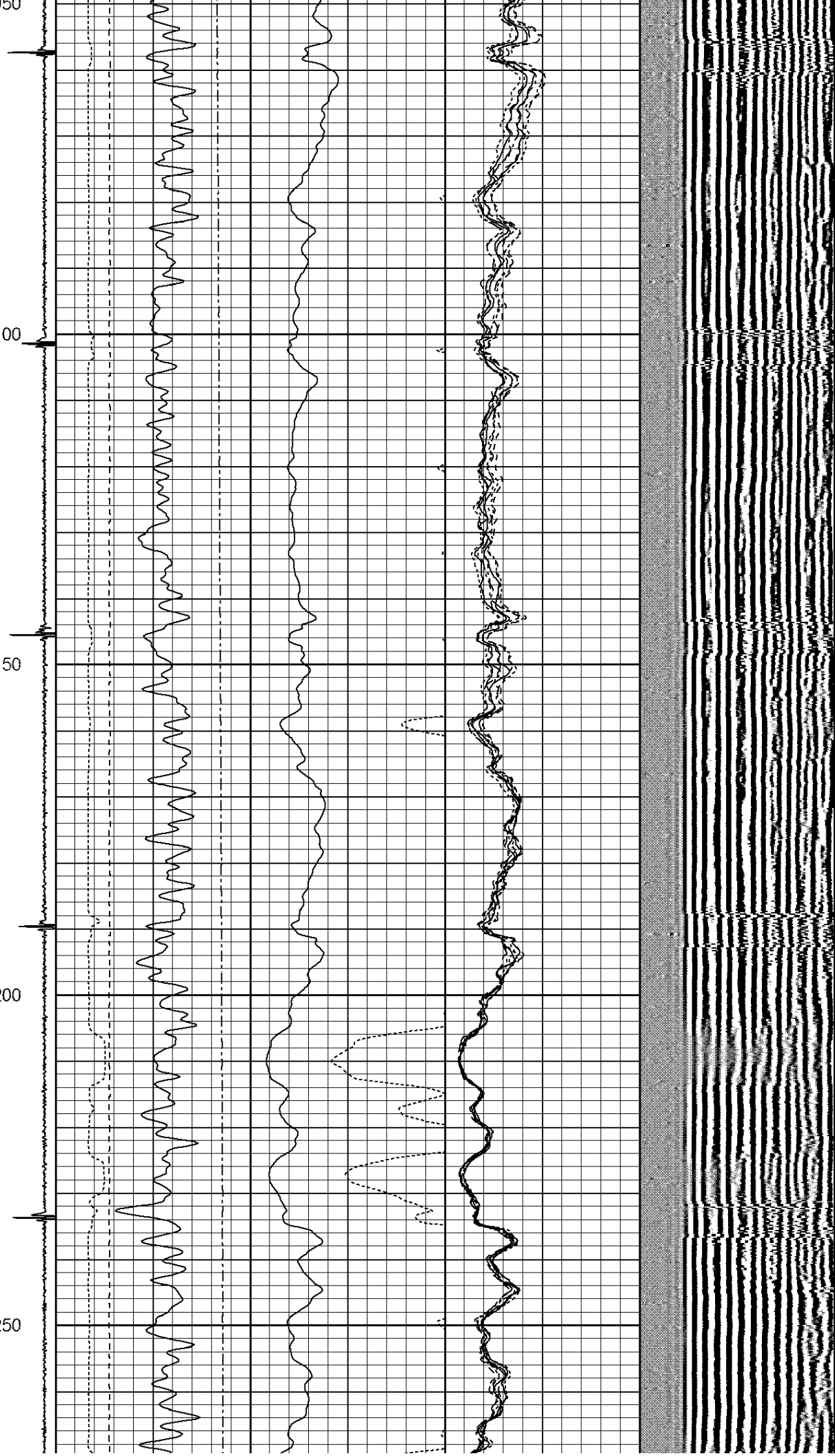
4900

4950

5000



5050
5100
5150
5200
5250

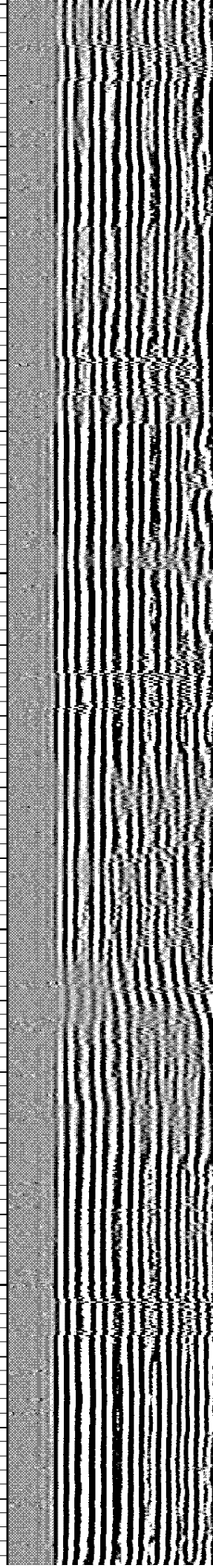
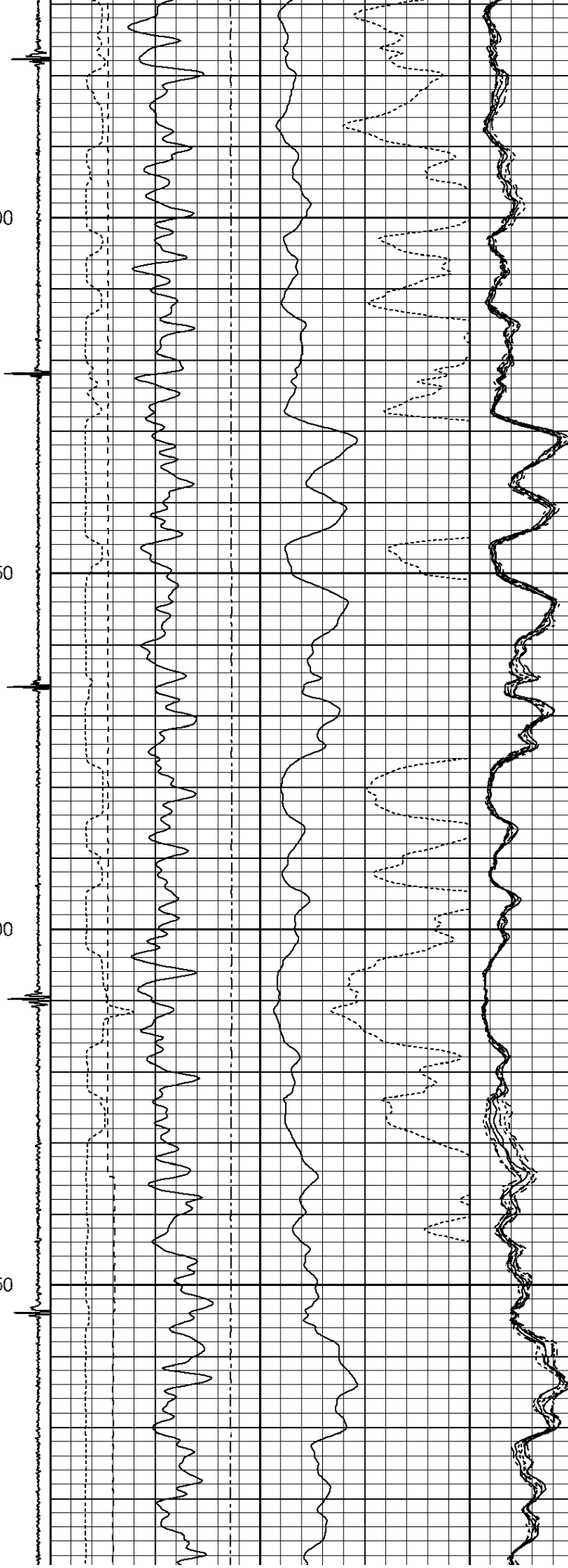


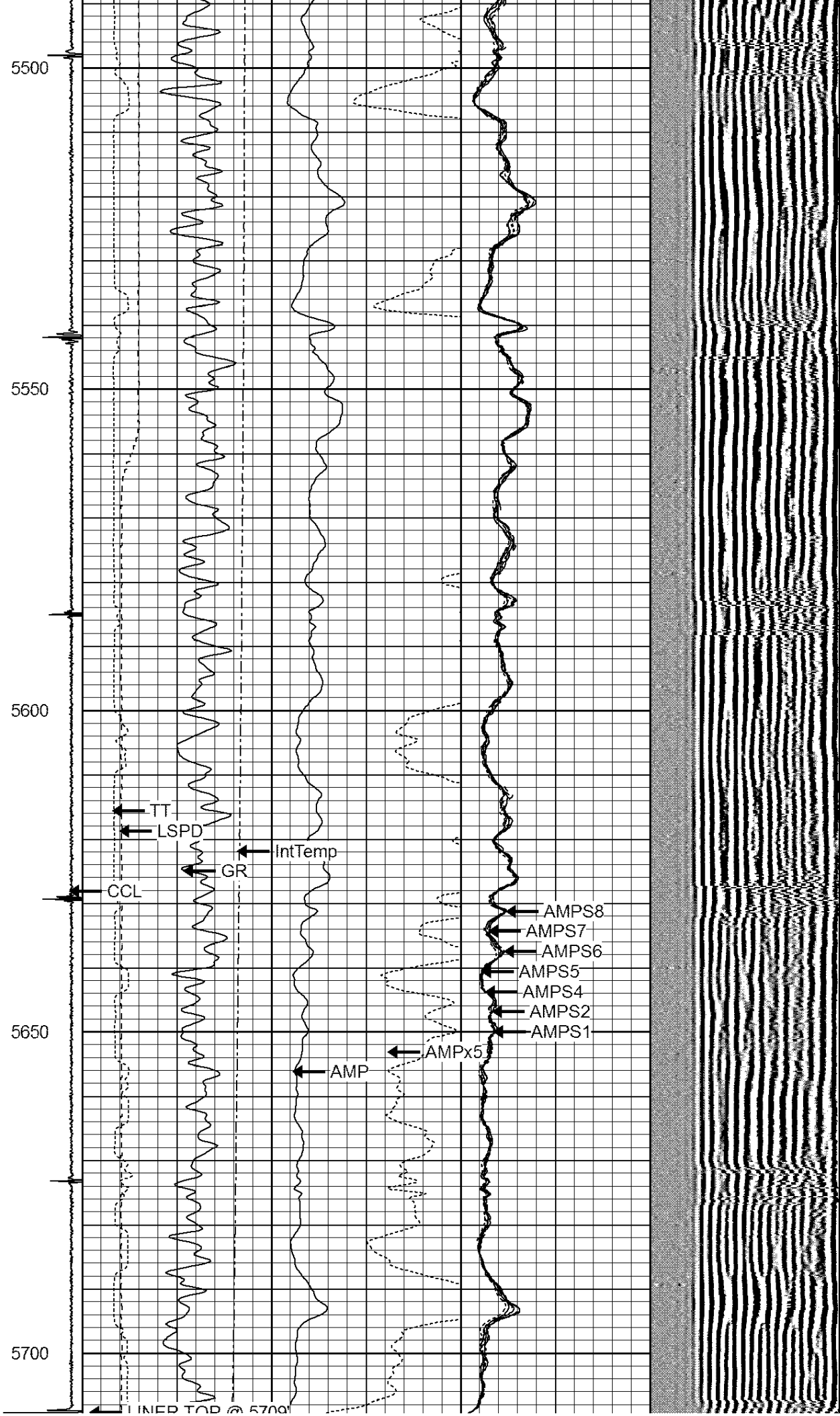
5300

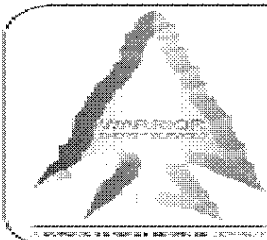
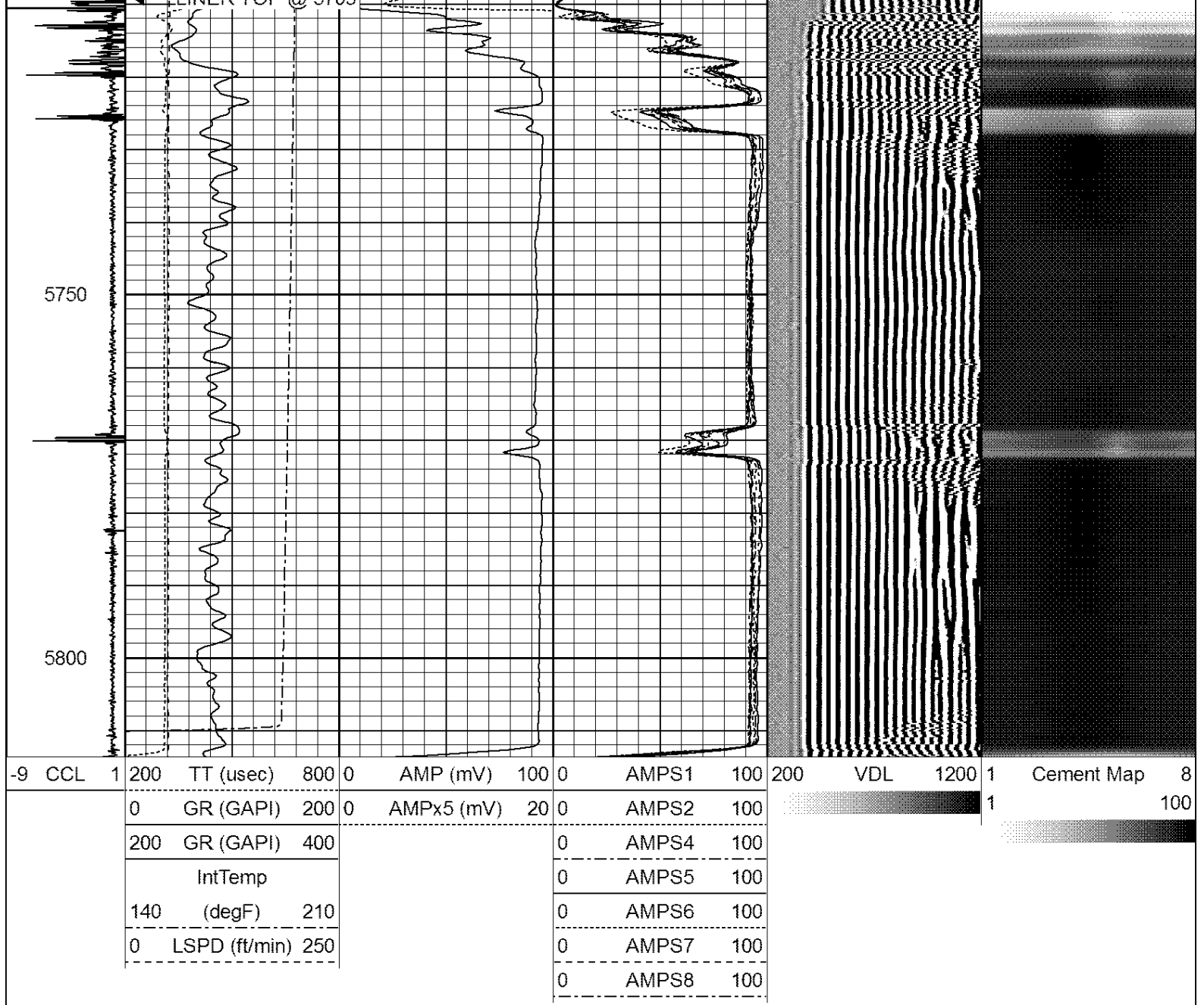
5350

5400

5450







WARRIOR
ENERGY SERVICES

Company Bill Barrett Corporation
Well CVR 5-63-32-3340BH
Field NE WATTENBERG
County WELD
State CO