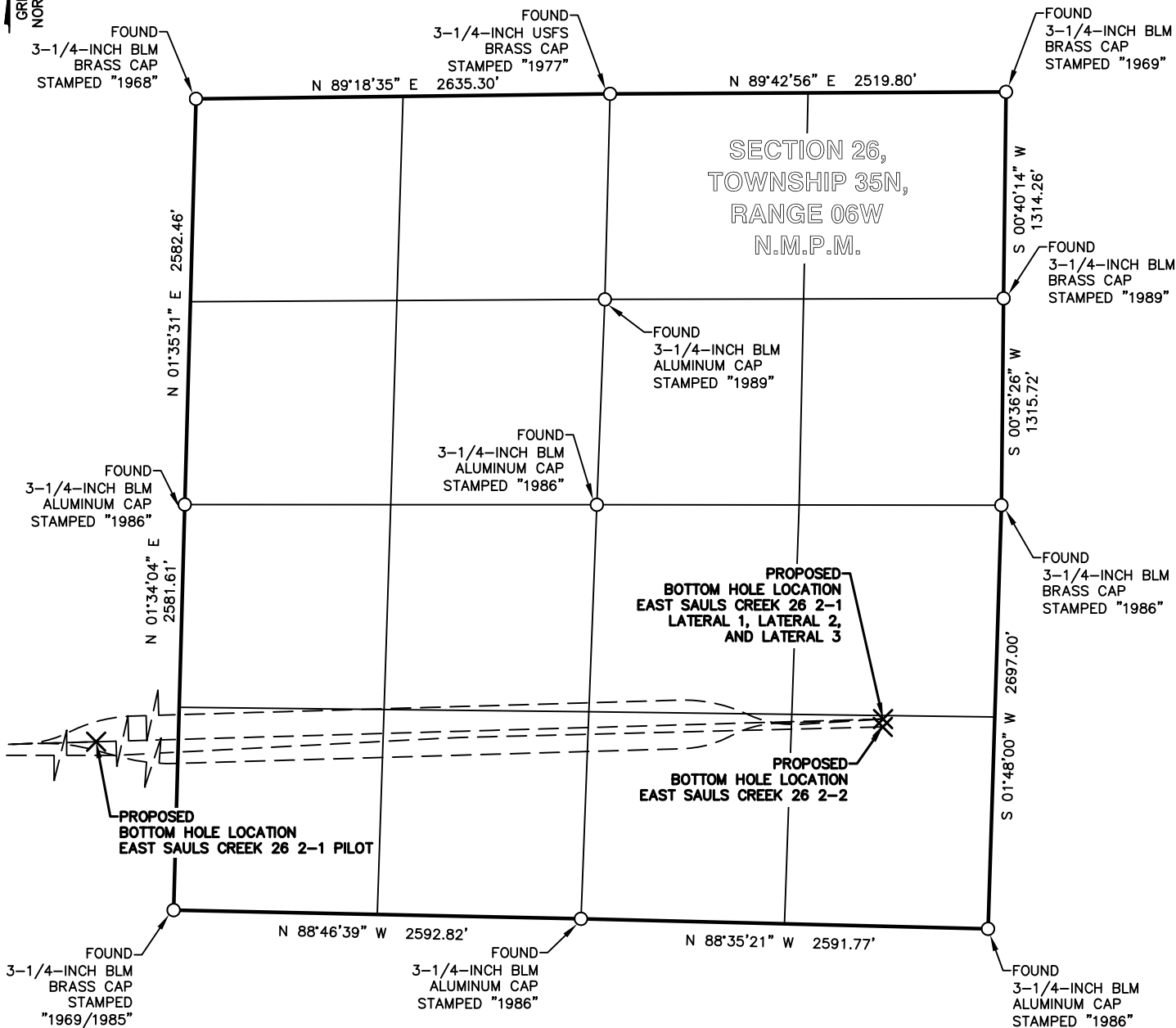



LEGEND	
FOUND MONUMENT	○
SURFACE HOLE LOCATION	⊗
BOTTOM HOLE LOCATION	✕





BP AMERICA
PRODUCTION COMPANY
US LOWER 48 ONSHORE

MULTI-WELL PLAN

YANKEE FEDERAL A 1, EAST SAULS CREEK
26 2-1 AND EAST SAULS CREEK 26 2-2
PART OF
SECTION 26 AND SECTION 27, TOWNSHIP 35N,
RANGE 06W, N.M.P.M.
LA PLATA COUNTY, COLORADO

DRAWN BY CFW	CHECKED BY RLM	SCALE 1"=1000'	DATE 12/13/2016	SHEET 2 OF 3	REVISION
-----------------	-------------------	-------------------	--------------------	-----------------	----------

YANKEE FEDERAL A 1 WELLBORE DISTANCES	
SHL TO TOP	123'
TOP TO BHL LATERAL 1	3,342'
TOP TO BHL LATERAL 1 ST 1	3,518'


YANKEE FEDERAL A 1	CSZ NAD'83	NAD'83	TIES	SEC / TWP / RNG	ELEVATION
EXISTING SURFACE HOLE LOCATION (SHL)	N (Y) = 1,225,125.66' E (X) = 2,414,631.23'	LAT. = 37.26762774°N LON. = 107.51170438°W	FSL = 950' FEL = 1630'	SEC 27, TWP 35N, RNG 06W	EXISTING GROUND 7466.59'
EXISTING BOTTOM HOLE LOCATION (BHL)	N (Y) = 1,225,058.15' E (X) = 2,414,525.79'	LAT. = 37.26743614°N LON. = 107.51206164°W	FSL = 879' FEL = 1734'	SEC 27, TWP 35N, RNG 06W	PROPOSED GRADE 7466.59'
PROPOSED TOP OF PRODUCTION (TOP) LAT 1 AND LAT 1 ST 1	N (Y) = 1,225,082.70' E (X) = 2,414,536.47'	LAT. = 37.26750418°N LON. = 107.51202676°W	FSL = 904' FEL = 1724'	SEC 27, TWP 35N, RNG 06W	
PROPOSED BOTTOM HOLE LOCATION (BHL) LAT 1	N (Y) = 1,226,268.30' E (X) = 2,411,710.83'	LAT. = 37.27059200°N LON. = 107.52182262°W	FSL = 2031' FWL = 715'	SEC 27, TWP 35N, RNG 06W	
PROPOSED BOTTOM HOLE LOCATION (BHL) LAT 1 ST 1	N (Y) = 1,226,443.29' E (X) = 2,411,712.40'	LAT. = 37.27107257°N LON. = 107.52183024°W	FSL = 2206' FWL = 716'	SEC 27, TWP 35N, RNG 06W	

EAST SAULS CREEK 26 2-1 WELLBORE DISTANCES	
SHL TO TOP	495'
TOP TO BHL PILOT	630'
TOP TO BHL LATERAL 1	5,640'
TOP TO BHL LATERAL 2	5,691'
TOP TO BHL LATERAL 3	5,680'

EAST SAULS CREEK 26 2-1	CSZ NAD'83	NAD'83	TIES		ELEVATION
PROPOSED SURFACE HOLE LOCATION (SHL)	N (Y) = 1,225,165.69' E (X) = 2,414,617.17'	LAT. = 37.26773682°N LON. = 107.51175565°W	FSL = 990' FEL = 1645'	SEC 27, TWP 35N, RNG 06W	EXISTING GROUND 7465.93'
PROPOSED TOP OF PRODUCTION (TOP) PILOT, LAT 1, LAT 2, AND LAT 3	N (Y) = 1,225,180.02' E (X) = 2,415,111.77'	LAT. = 37.26780541°N LON. = 107.51005747°W	FSL = 1019' FEL = 1151'	SEC 27, TWP 35N, RNG 06W	PROPOSED GRADE 7466.59'
PROPOSED BOTTOM HOLE LOCATION (BHL) PILOT	N (Y) = 1,225,198.28' E (X) = 2,415,741.67'	LAT. = 37.26789275°N LON. = 107.50789474°W	FSL = 1056' FEL = 522'	SEC 27, TWP 35N, RNG 06W	
PROPOSED BOTTOM HOLE LOCATION (BHL) LAT 1	N (Y) = 1,225,342.94' E (X) = 2,420,749.45'	LAT. = 37.26858430°N LON. = 107.49070055°W	FSL = 1318' FEL = 710'	SEC 26, TWP 35N, RNG 06W	
PROPOSED BOTTOM HOLE LOCATION (BHL) LAT 2	N (Y) = 1,225,342.94' E (X) = 2,420,749.45'	LAT. = 37.26858430°N LON. = 107.49070055°W	FSL = 1318' FEL = 710'	SEC 26, TWP 35N, RNG 06W	
PROPOSED BOTTOM HOLE LOCATION (BHL) LAT 3	N (Y) = 1,225,342.94' E (X) = 2,420,749.45'	LAT. = 37.26858430°N LON. = 107.49070055°W	FSL = 1318' FEL = 710'	SEC 26, TWP 35N, RNG 06W	

EAST SAULS CREEK 26 2-2 WELLBORE DISTANCES	
SHL TO TOP	0'
TOP TO BHL	6,160'

EAST SAULS CREEK 26 2-2	CSZ NAD'83	NAD'83	TIES	SEC / TWP / RNG	ELEVATION
PROPOSED SURFACE HOLE LOCATION (SHL)	N (Y) = 1,225,111.60' E (X) = 2,414,591.20'	LAT. = 37.26758677°N LON. = 107.51184087°W	FSL = 935' FEL = 1670'	SEC 27, TWP 35N, RNG 06W	EXISTING GROUND 7465.34'
PROPOSED TOP OF PRODUCTION (TOP)	N (Y) = 1,225,111.60' E (X) = 2,414,591.20'	LAT. = 37.26758677°N LON. = 107.51184087°W	FSL = 935' FEL = 1670'	SEC 27, TWP 35N, RNG 06W	PROPOSED GRADE 7466.59'
PROPOSED BOTTOM HOLE LOCATION (BHL)	N (Y) = 1,225,292.96' E (X) = 2,420,747.88'	LAT. = 37.26844698°N LON. = 107.49070228°W	FSL = 1268' FEL = 710'	SEC 26, TWP 35N, RNG 06W	

	BP AMERICA PRODUCTION COMPANY US LOWER 48 ONSHORE
	MULTI-WELL PLAN
	YANKEE FEDERAL A 1, EAST SAULS CREEK 26 2-1 AND EAST SAULS CREEK 26 2-2 PART OF SECTION 26 AND SECTION 27, TOWNSHIP 35N, RANGE 06W, N.M.P.M. LA PLATA COUNTY, COLORADO

DRAWN BY CFW	CHECKED BY RLM	SCALE N/A	DATE 12/13/2016	SHEET 3 OF 3	REVISION
-----------------	-------------------	--------------	--------------------	-----------------	----------