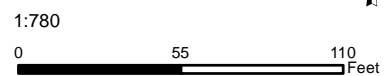


Existing Pad Size: 0.766 acres
 Final Pad Size: 1.051 acres
 Difference: 0.285 acres
 Pad Graded to divert water to Rock Outlets

- Proposed Well
- ▤ Diversion Ditch
- ▬ Sediment Control Log
- ➡ flowdirection
- ▨ Permanent Seeding & Mulching
- ▤ Rock Rundown

LAND TYPE: FED
 LAT: 37.267628 N
 LONG: 107.511704 W
 SE¼ SEC 27, T35N R 06W



DISCLAIMER: This general arrangement drawing (GAD) has been generated for a preliminary discussion of a proposed access road, pipeline, drillsite or other type of facility. The location and arrangement thereof are approximate and subject to change at any time, whether due to on-the-ground surveys, regulatory requirements or (without limitation) other factors. Reclamation plans do not reflect cut and fill slopes and are subject to change as data is acquired. This GAD is confidential and its duplication or distribution requires written permission from BP America Production Company.

YANKEE FED A 1 HST EAST SAULS CREEK 26 2-1 & 26 2-2 Reclamation/Supplemental Stormwater Plan			
12/8/2016	SCALE AS NOTED	PROJ #	FILE
DB	ENGINEER		

BP America
 San Juan North
 Durango, CO



La Plata County, Colorado

REV
0