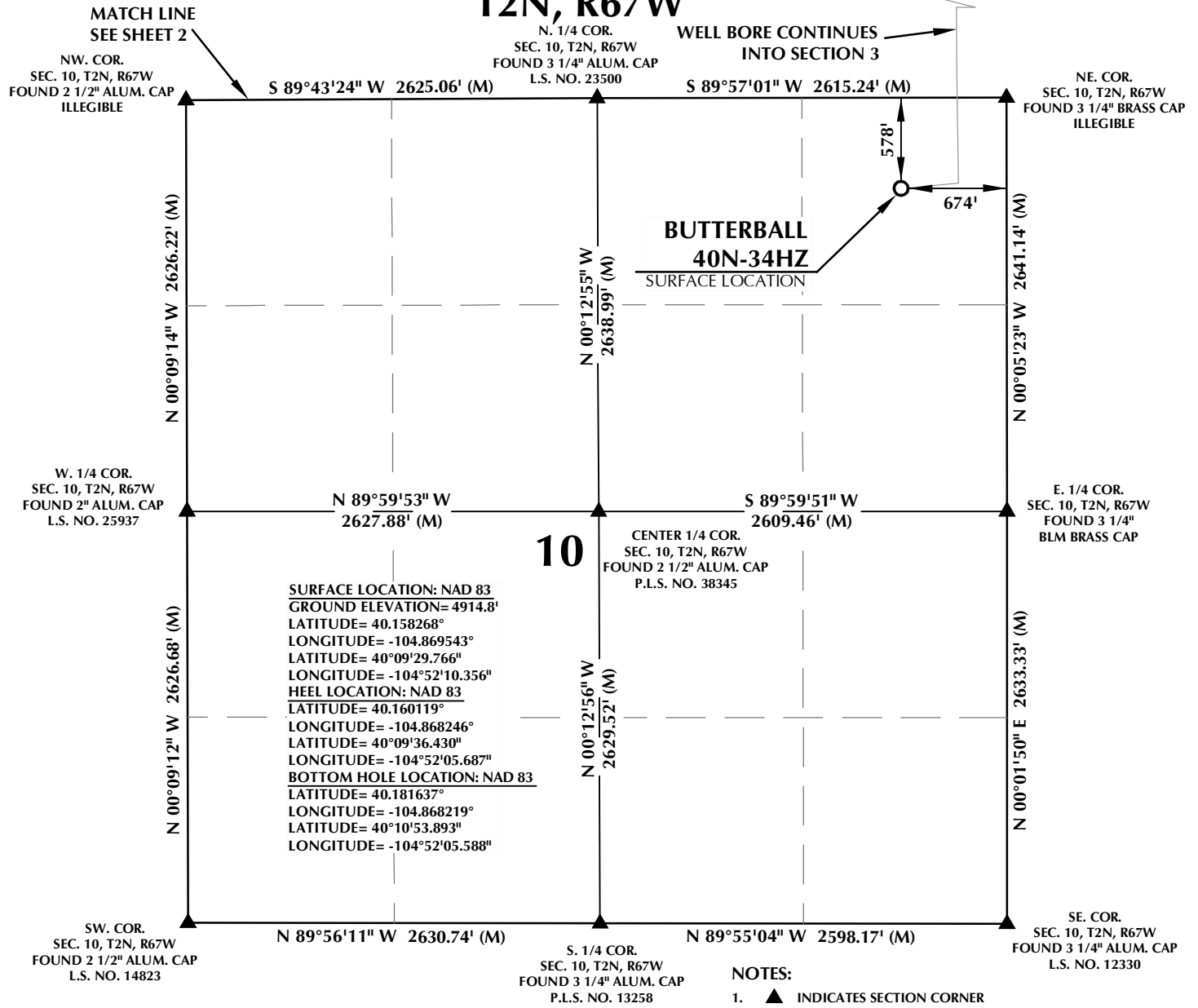


K:\LAND\2013\2013.90 COLORADO T2N, R67W, SEC. 10, EAST PLATS\BUTTERBALL 24N2-34HZ.BB 24N2-34HZ.BB 24N2-34HZ.BB 10/20/2016 4:44:38 PM, lba

T2N, R67W



SURFACE LOCATION: NAD 83
GROUND ELEVATION= 4914.8'
LATITUDE= 40.158268°
LONGITUDE= -104.869543°
LATITUDE= 40°09'29.766"
LONGITUDE= -104°52'10.356"
HEEL LOCATION: NAD 83
LATITUDE= 40.160119°
LONGITUDE= -104.868246°
LATITUDE= 40°09'36.430"
LONGITUDE= -104°52'05.687"
BOTTOM HOLE LOCATION: NAD 83
LATITUDE= 40.181637°
LONGITUDE= -104.868219°
LATITUDE= 40°10'53.893"
LONGITUDE= -104°52'05.588"

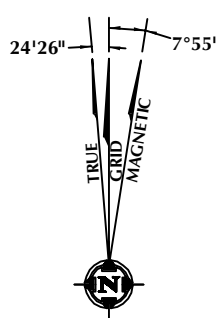
CERTIFICATE OF SURVEYOR:

THIS IS TO CERTIFY THAT THE ABOVE PLAT WAS PREPARED FROM FIELD NOTES OF ACTUAL SURVEY MADE BY ME OR UNDER MY SUPERVISION AND THAT THE SAME ARE TRUE AND CORRECT TO THE BEST OF MY KNOWLEDGE AND BELIEF. THIS CERTIFICATE DOES NOT REPRESENT A LAND SURVEY PLAT OR IMPROVEMENT SURVEY PLAT AS DEFINED BY C.R.S. 38-51-102 AND CANNOT BE RELIED UPON TO DETERMINE OWNERSHIP.

Randall K. French
RANDALL K. FRENCH
PROFESSIONAL LAND SURVEYOR
COLORADO REGISTRATION NUMBER 18512

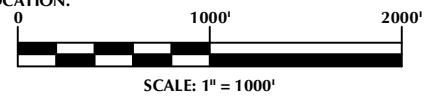
NOTICE:
ACCORDING TO COLORADO STATE LAW YOU MUST COMMENCE ANY LEGAL ACTION BASED UPON ANY DEFECT IN THIS SURVEY WITHIN THREE YEARS AFTER YOU FIRST DISCOVER SUCH DEFECT. IN NO EVENT MAY ANY ACTION BASED UPON ANY DEFECT IN THIS SURVEY BE COMMENCED MORE THAN TEN YEARS FROM THE DATE ON THE CERTIFICATION SHOWN HEREON.

NOTE:
MAGNETIC NORTH IS CURRENT AS OF 10/3/2016.
MAGNETIC NORTH CHANGES WEST 0°06' PER YEAR.



NOTES:

- ▲ INDICATES SECTION CORNER
- ⊙ INDICATES CALCULATED CORNER
- ELEVATION BASED ON NAVD88 (GEOID12B)
- BASIS OF BEARING DERIVED FROM COLORADO COORDINATE SYSTEM OF 1983 NORTH ZONE.
- ALL MEASURED DISTANCES ARE GRID.
COMBINED SCALE FACTOR: .99972597 CALCULATED FROM THE N. 1/4 CORNER OF SECTION 10, T2N, R67W
- OPERATOR: ROB WILSON / PDOP = 1.3
- SEE ADDENDUM TO WELL LOCATION CERTIFICATE FOR EXISTING IMPROVEMENTS WITHIN 500' OF THE WELL PAD.
- WELL FOOTAGES ARE MEASURED AT RIGHT ANGLES TO THE SECTION LINES.
- THE BOTTOM OF HOLE BEARS N00°21'08"W, 7838' FROM THE HEEL LOCATION.



WELL PAD - BUTTERBALL 24N2-34HZ

BUTTERBALL 40N-34HZ
WELL LOCATION CERTIFICATE
578' FNL & 674' FEL NENE (SURFACE)
LOCATED IN SECTION 10
99' FSL & 316' FEL SESE (HEEL)
LOCATED IN SECTION 3
T2N, R67W, 6TH P.M.
2582' FSL & 304' FEL NESE (BOTTOM)
LOCATED IN SECTION 34
T3N, R67W, 6TH P.M.
WELD COUNTY, COLORADO

**Kerr-McGee Oil &
Gas Onshore L.P.**
1099 18th Street
Denver, Colorado 80202

609 CONSULTING, LLC

SHERIDAN OFFICE
1095 Saberton Avenue
Sheridan, Wyoming 82801
Phone 307-674-0609

LOVELAND OFFICE
1635 Foxtrail Drive, Suite 204
Loveland, Colorado 80538
Phone 970-776-4331

| | | |
|------------------------|------------------------|---------------------------------|
| DRAFTED BY: LMO | CHECKED BY: RKF | SHEET NO: 1 1 OF 3 |
| DATE DRAFTED: 10/19/16 | DATE SURVEYED: 7/26/16 | |
| REVISED: | FILE NAME: 13-90 | |

