

LEGEND:

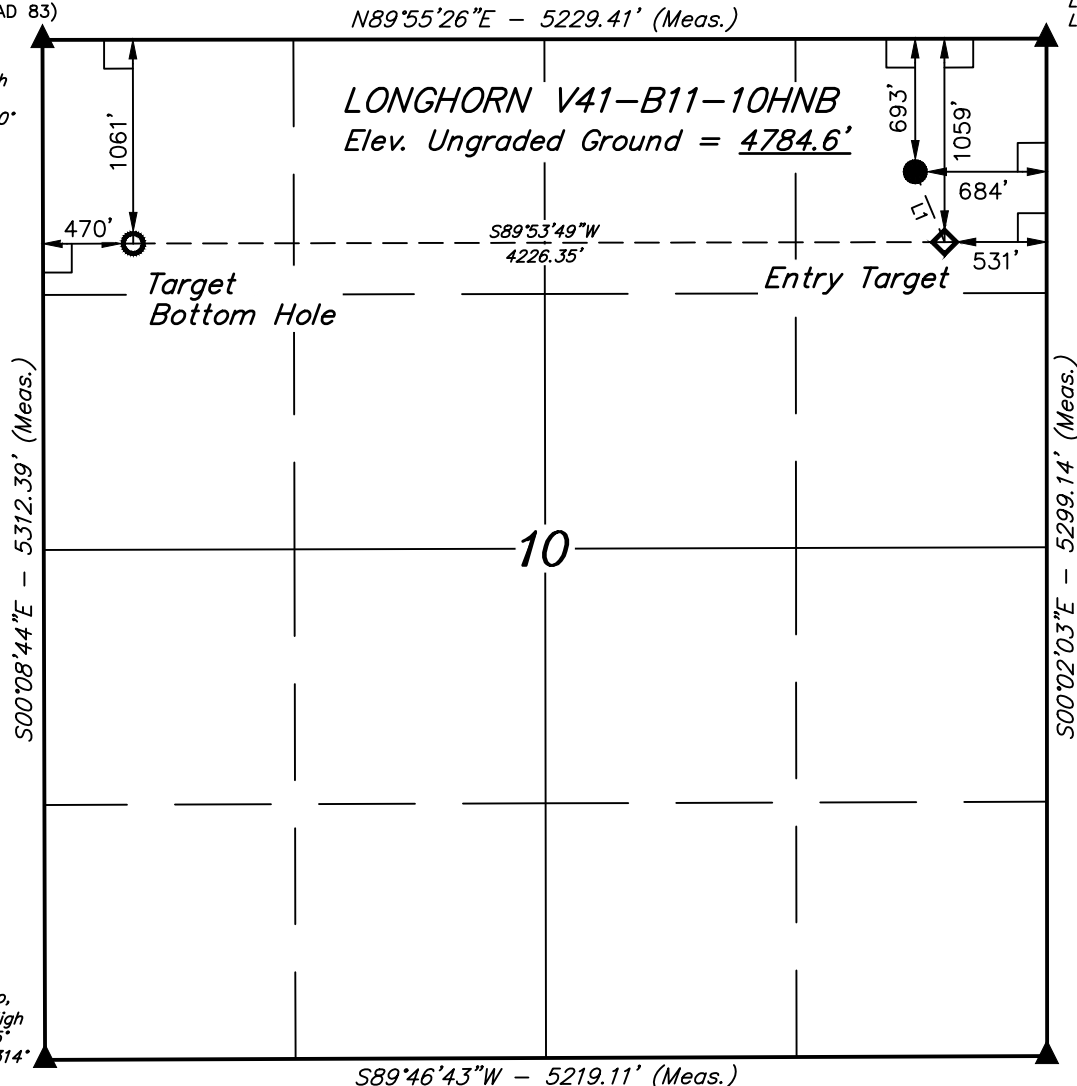
- = 90° SYMBOL
 = PROPOSED WELLHEAD.
 = ENTRY TARGET
 = TARGET BOTTOM HOLE.
 = SECTION CORNERS LOCATED. (NAD 83)

T3N, R63W, 6th P.M.

LINE TABLE		
LINE	DIRECTION	LENGTH
L1	S22°38'33"E	396.84'

2016 Alum. Cap,
#28285, 0.3' High
Lat: 40.247300°
Long: 104.414669°

2016 Alum. Cap,
#28285, 0.3' High
Lat: 40.247256°
Long: 104.433400°



2016 Alum. Cap,
#28285, 0.3' High
Lat: 40.232675°
Long: 104.433314°

2016 Alum. Cap,
#28285, 0.3' High
Lat: 40.232758°
Long: 104.414628°

PDOP = 1.5

**NAD 83 (SURFACE LOCATION)**

LATITUDE = 40°14'43.42" (40.245394)
LONGITUDE = 104°25'01.61" (104.417114)

NAD 83 (ENTRY TARGET)

LATITUDE = 40°14'39.80" (40.244389)
LONGITUDE = 104°24'59.63" (104.416564)

NAD 83 (TARGET BOTTOM HOLE)

LATITUDE = 40°14'39.65" (40.244347)
LONGITUDE = 104°25'54.12" (104.431700)

BASIS OF BEARINGS

BASIS OF BEARINGS IS A G.P.S. OBSERVATION

BASIS OF ELEVATION

SPOT ELEVATION LOCATED AT THE NORTHEAST CORNER OF SECTION 24, T5N, R62W, 6th P.M. TAKEN FROM THE POINT OF ROCKS, QUADRANGLE, COLORADO, WELD COUNTY, 7.5 MINUTE QUAD (TOPOGRAPHIC MAP) PUBLISHED BY THE UNITED STATES DEPARTMENT OF THE INTERIOR, GEOLOGICAL SURVEY. SAID ELEVATION IS MARKED AS BEING 4530 FEET.

UELS, LLC

Corporate Office * 85 South 200 East
Vernal, UT 84078 * (435) 789-1017



CERTIFICATE
THIS IS TO CERTIFY THAT THE ABOVE PLAT WAS PREPARED FROM FIELD NOTES OF ACTUAL SURVEYS MADE BY ME OR UNDER MY SUPERVISION, AND THAT THE SAME ARE TRUE AND CORRECT TO THE BEST OF MY KNOWLEDGE AND BELIEF.

REGISTERED LAND SURVEYOR
REGISTRATION NO. 28285
STATE OF COLORADO

2016-16

**BONANZA CREEK ENERGY
OPERATING COMPANY, LLC**

**LONGHORN V41-B11-10HNB
NE 1/4 NE 1/4, SECTION 10, T3N, R63W, 6th P.M.
WELD COUNTY, COLORADO**

SURVEYED BY	CHAD MEIERS, D.N.	11-21-16	SCALE
DRAWN BY	L.C.S.	11-22-16	1" = 1000'

WELL LOCATION PLAT