

BONANZA CREEK ENERGY INC.

WELD COUNTY, COLORADO (NAD 83)

NE NE SEC. 10 T3N R63W 6th P.M.

LONGHORN V41-B11-10HNB

ORIGINAL WELLBORE

05 December, 2016

Plan: PROPOSAL #2

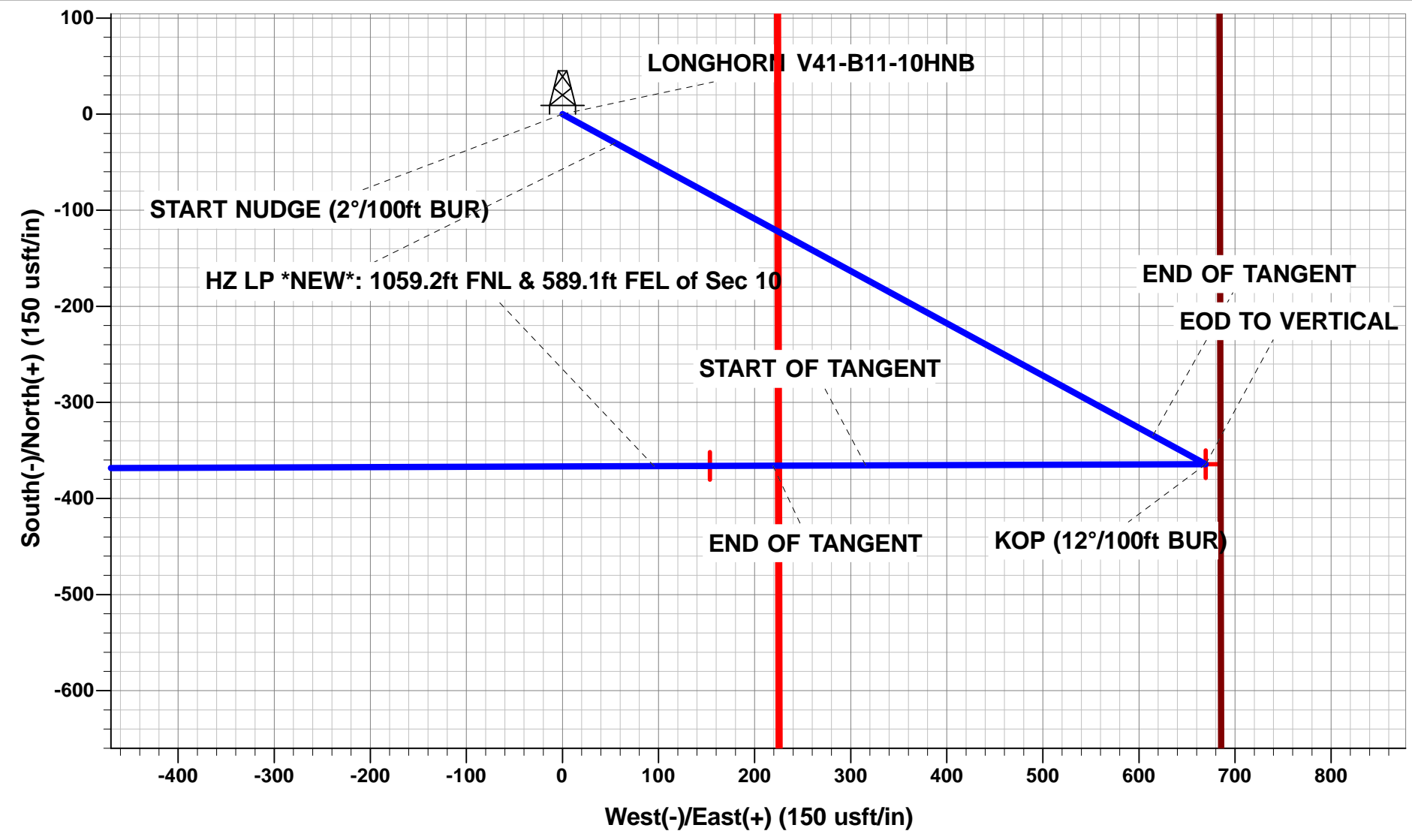




Project: WELD COUNTY, COLORADO (NAD 83)
Site: NE NE SEC. 10 T3N R63W 6th P.M.
Well: LONGHORN V41-B11-10HNB
Wellbore: ORIGINAL WELLBORE
Design: PROPOSAL #2

ANNOTATIONS									
TVD	MD	Inc	Azi	+N/-S	+E/-W	VSect	Dep	Annotation	
0.0	0.0	0.00	0.00	0.0	0.0	0.0	0.0	SHL: 693ft FNL & 684ft FEL of Sec 10	
1700.0	1700.0	0.00	0.00	0.0	0.0	0.0	0.0	START NUDGE (2°/100ft BUR)	
2295.6	2300.0	12.00	118.55	-29.9	55.0	-52.0	62.6	EOB TO 12° INC	
5292.7	5364.0	12.00	118.55	-334.4	614.5	-580.7	699.6	END OF TANGENT	
5888.3	5964.0	0.00	0.00	-364.3	669.5	-632.6	762.2	EOD TO VERTICAL	
5978.3	6054.0	0.00	0.00	-364.3	669.5	-632.6	762.2	KOP (12°/100ft BUR)	
6439.5	6679.0	75.00	269.80	-365.5	315.6	-280.2	1116.1	START OF TANGENT	
6465.4	6779.0	75.00	269.80	-365.9	219.0	-184.0	1212.7	END OF TANGENT	
6481.6	6904.0	90.00	269.80	-366.3	95.4	-60.9	1336.3	HZ LP *NEW*: 1059.2ft FNL & 589.1ft FEL of Sec 10	
6481.6	11071.3	90.00	269.79	-381.1	-4071.8	4089.6	5503.6	BHL: 1061ft FNL & 470ft FWL of Sec 10	

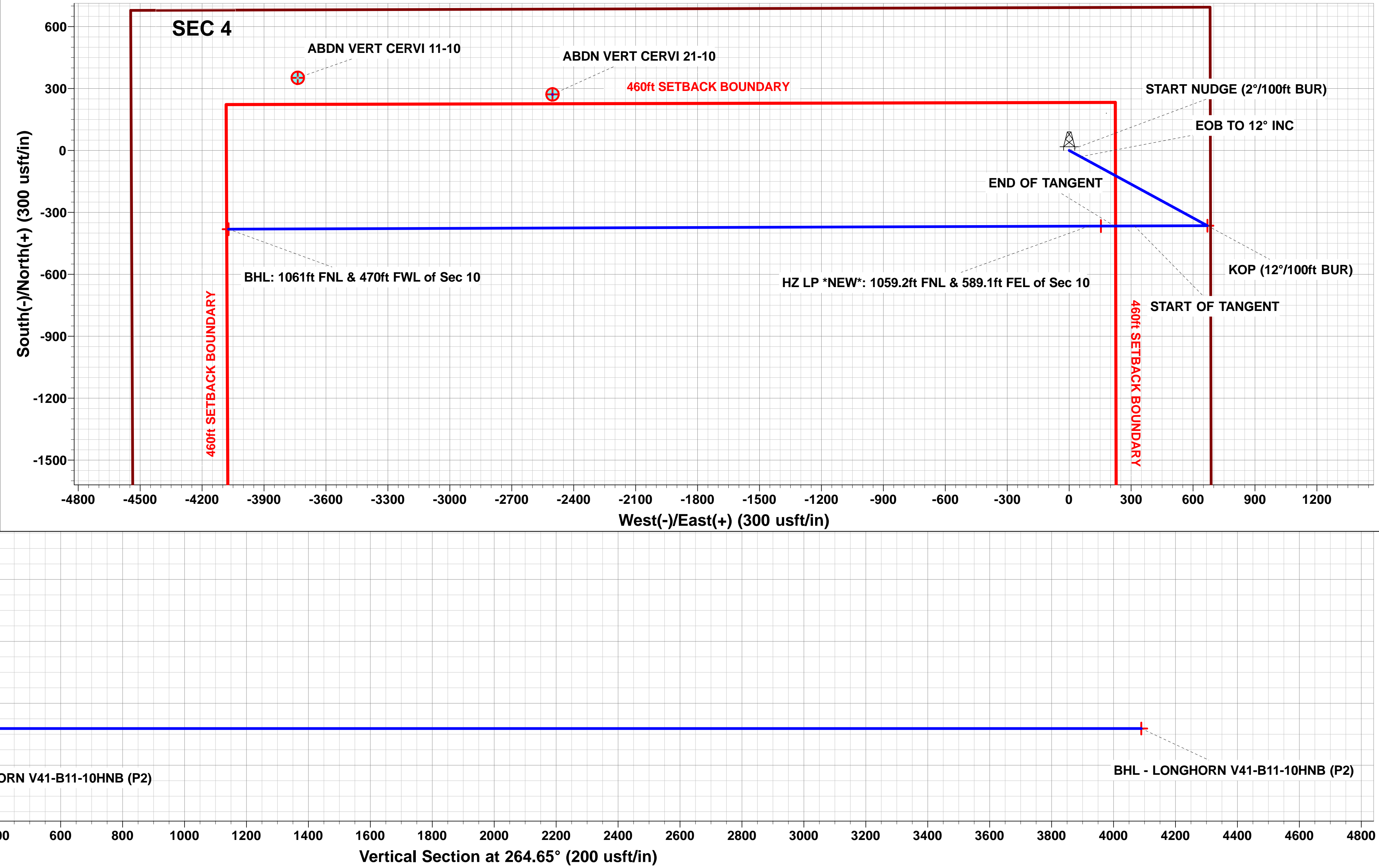
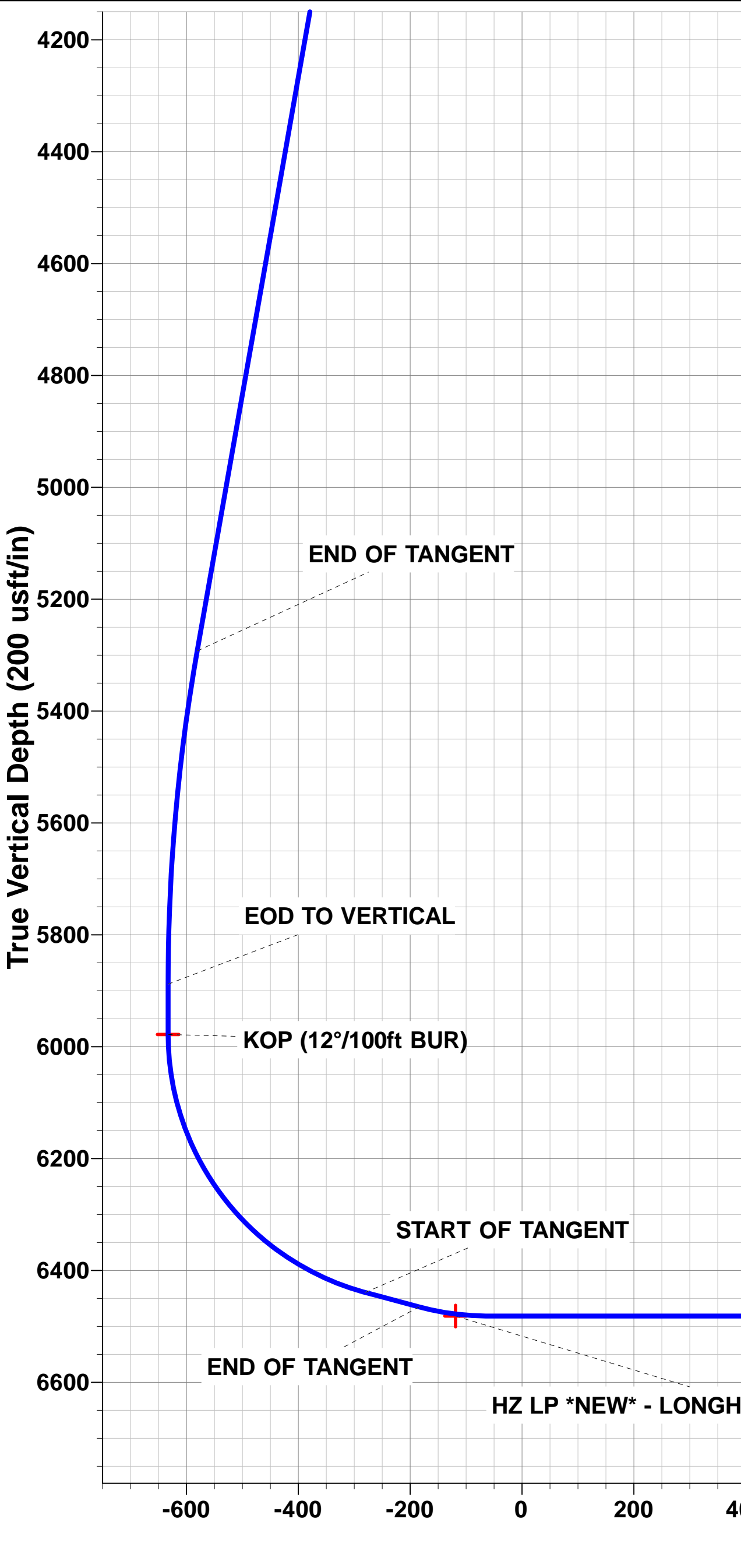
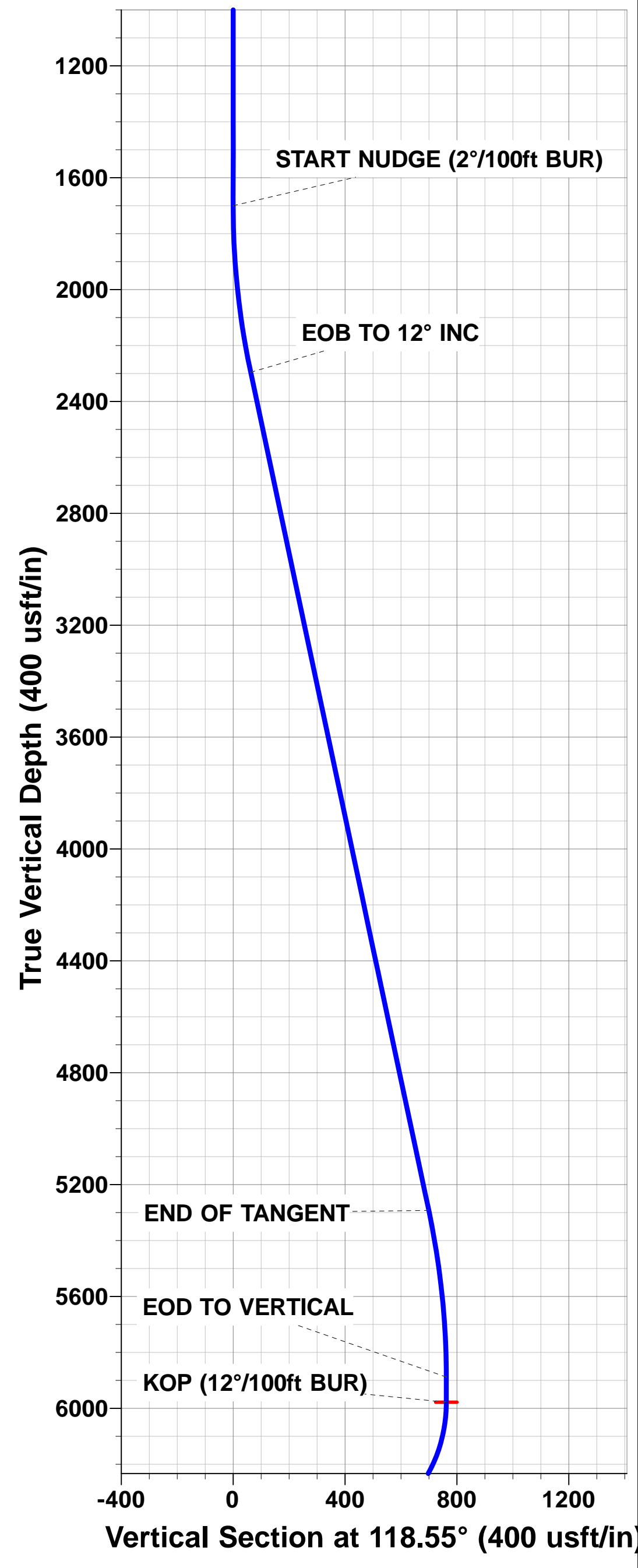
WELLBORE TARGET DETAILS (LAT/LONG)					
Name	TVD	+N/-S	+E/-W	Latitude	Longitude
KOP - LONGHORN V41-B11-10HNB (P2)	5978.3	-364.3	669.5	40.244394	-104.414716
BHL - LONGHORN V41-B11-10HNB (P2)	6481.6	-381.1	-4071.9	40.244347	-104.431700
HZ LP *NEW* - LONGHORN V41-B11-10HNB (P2)	6481.6	-366.1	153.5	40.244389	-104.416564



PROPOSED LOCAL COORDINATES:
SHL: 693ft FNL & 684ft FEL of Sec 10
HZ LP *NEW*: 1059.2ft FNL & 589.1ft FEL of Sec 10
BHL: 1061ft FNL & 470ft FWL of Sec 10

Azimuths to True North
Magnetic North: 8.08°

Magnetic Field
Strength: 52418.8snT
Dip Angle: 66.80°
Date: 04/11/2016
Model: IGRF2015



Database:	EDM 5000.1 Single User Db	Local Co-ordinate Reference:	Well LONGHORN V41-B11-10HNB
Company:	BONANZA CREEK ENERGY INC.	TVD Reference:	KB-EST @ 4801.6usft
Project:	WELD COUNTY, COLORADO (NAD 83)	MD Reference:	KB-EST @ 4801.6usft
Site:	NE NE SEC. 10 T3N R63W 6th P.M.	North Reference:	True
Well:	LONGHORN V41-B11-10HNB	Survey Calculation Method:	Minimum Curvature
Wellbore:	ORIGINAL WELLBORE		
Design:	PROPOSAL #2		

Project	WELD COUNTY, COLORADO (NAD 83)		
Map System:	US State Plane 1983	System Datum:	Mean Sea Level
Geo Datum:	North American Datum 1983		
Map Zone:	Colorado Northern Zone		Using geodetic scale factor

Site	NE NE SEC. 10 T3N R63W 6th P.M.		
Site Position:		Northing:	1,334,267.00 usft
From:	Lat/Long	Easting:	3,302,453.08 usft
Position Uncertainty:	0.0 usft	Slot Radius:	1.10000ft
		Latitude:	40.245889
		Longitude:	-104.416469
		Grid Convergence:	0.70 °

Well	LONGHORN V41-B11-10HNB		
Well Position	+N-S	-180.3 usft	Northing:
	+E-W	-180.1 usft	Easting:
Position Uncertainty	0.0 usft	Wellhead Elevation:	usft
		Latitude:	40.245394
		Longitude:	-104.417114
		Ground Level:	4,784.6 usft

Wellbore	ORIGINAL WELLBORE				
Magnetics	Model Name	Sample Date	Declination (°)	Dip Angle (°)	Field Strength (nT)
	IGRF2015	04/11/2016	8.08	66.80	52,419

Design	PROPOSAL #2			
Audit Notes:				
Version:	Phase:	PROTOTYPE	Tie On Depth:	0.0
Vertical Section:	Depth From (TVD) (usft)	+N-S (usft)	+E-W (usft)	Direction (°)
	6,481.6	0.0	0.0	264.65

Plan Sections											
MD (usft)	Inc (°)	Azi (°)	Vertical Depth	SS (usft)	+N-S (usft)	+E-W (usft)	Dogleg Rate (°/100usft)	Build Rate (°/100usft)	Turn Rate (°/100usft)	TFO (°)	Target
0.0	0.00	0.00	0.0	-4,801.6	0.0	0.0	0.00	0.00	0.00	0.00	
1,700.0	0.00	0.00	1,700.0	-3,101.6	0.0	0.0	0.00	0.00	0.00	0.00	
2,300.0	12.00	118.55	2,295.6	-2,506.0	-29.9	55.0	2.00	2.00	0.00	118.55	
5,364.0	12.00	118.55	5,292.7	491.1	-334.4	614.5	0.00	0.00	0.00	0.00	
5,964.0	0.00	0.00	5,888.3	1,086.7	-364.3	669.5	2.00	-2.00	0.00	180.00	
6,054.0	0.00	0.00	5,978.3	1,176.7	-364.3	669.5	0.00	0.00	0.00	0.00	KOP - LONGHORN
6,679.0	75.00	269.80	6,439.5	1,637.9	-365.5	315.6	12.00	12.00	0.00	269.80	
6,779.0	75.00	269.80	6,465.4	1,663.8	-365.9	219.0	0.00	0.00	0.00	0.00	
6,904.0	90.00	269.80	6,481.6	1,680.0	-366.3	95.4	12.00	12.00	0.00	0.00	
11,071.3	90.00	269.79	6,481.6	1,680.0	-381.1	-4,071.9	0.00	0.00	0.00	-78.52	BHL - LONGHORN

Database:	EDM 5000.1 Single User Db	Local Co-ordinate Reference:	Well LONGHORN V41-B11-10HNB
Company:	BONANZA CREEK ENERGY INC.	TVD Reference:	KB-EST @ 4801.6usft
Project:	WELD COUNTY, COLORADO (NAD 83)	MD Reference:	KB-EST @ 4801.6usft
Site:	NE NE SEC. 10 T3N R63W 6th P.M.	North Reference:	True
Well:	LONGHORN V41-B11-10HNB	Survey Calculation Method:	Minimum Curvature
Wellbore:	ORIGINAL WELLBORE		
Design:	PROPOSAL #2		

Planned Survey

MD (usft)	Inc (°)	Azi (°)	TVD (usft)	SS (usft)	+N/-S (usft)	+E/-W (usft)	Vertical Section (usft)	Dogleg Rate (°/100usft)	Build Rate (°/100usft)	Turn Rate (°/100usft)
SHL: 693ft FNL & 684ft FEL of Sec 10										
0.0	0.00	0.00	0.0	4,801.60	0.0	0.0	0.0	0.00	0.00	0.00
100.0	0.00	0.00	100.0	4,701.60	0.0	0.0	0.0	0.00	0.00	0.00
200.0	0.00	0.00	200.0	4,601.60	0.0	0.0	0.0	0.00	0.00	0.00
300.0	0.00	0.00	300.0	4,501.60	0.0	0.0	0.0	0.00	0.00	0.00
400.0	0.00	0.00	400.0	4,401.60	0.0	0.0	0.0	0.00	0.00	0.00
500.0	0.00	0.00	500.0	4,301.60	0.0	0.0	0.0	0.00	0.00	0.00
600.0	0.00	0.00	600.0	4,201.60	0.0	0.0	0.0	0.00	0.00	0.00
700.0	0.00	0.00	700.0	4,101.60	0.0	0.0	0.0	0.00	0.00	0.00
800.0	0.00	0.00	800.0	4,001.60	0.0	0.0	0.0	0.00	0.00	0.00
900.0	0.00	0.00	900.0	3,901.60	0.0	0.0	0.0	0.00	0.00	0.00
1,000.0	0.00	0.00	1,000.0	3,801.60	0.0	0.0	0.0	0.00	0.00	0.00
1,100.0	0.00	0.00	1,100.0	3,701.60	0.0	0.0	0.0	0.00	0.00	0.00
1,200.0	0.00	0.00	1,200.0	3,601.60	0.0	0.0	0.0	0.00	0.00	0.00
1,300.0	0.00	0.00	1,300.0	3,501.60	0.0	0.0	0.0	0.00	0.00	0.00
1,400.0	0.00	0.00	1,400.0	3,401.60	0.0	0.0	0.0	0.00	0.00	0.00
1,500.0	0.00	0.00	1,500.0	3,301.60	0.0	0.0	0.0	0.00	0.00	0.00
1,600.0	0.00	0.00	1,600.0	3,201.60	0.0	0.0	0.0	0.00	0.00	0.00
START NUDGE (2°/100ft BUR)										
1,700.0	0.00	0.00	1,700.0	3,101.60	0.0	0.0	0.0	0.00	0.00	0.00
1,800.0	2.00	118.55	1,800.0	3,001.62	-0.8	1.5	-1.4	2.00	2.00	0.00
1,900.0	4.00	118.55	1,899.8	2,901.76	-3.3	6.1	-5.8	2.00	2.00	0.00
2,000.0	6.00	118.55	1,999.5	2,802.15	-7.5	13.8	-13.0	2.00	2.00	0.00
2,100.0	8.00	118.55	2,098.7	2,702.90	-13.3	24.5	-23.1	2.00	2.00	0.00
2,200.0	10.00	118.55	2,197.5	2,604.13	-20.8	38.2	-36.1	2.00	2.00	0.00
EOB TO 12° INC										
2,300.0	12.00	118.55	2,295.6	2,505.98	-29.9	55.0	-52.0	2.00	2.00	0.00
2,400.0	12.00	118.55	2,393.4	2,408.16	-39.9	73.3	-69.2	0.00	0.00	0.00
2,500.0	12.00	118.55	2,491.3	2,310.35	-49.8	91.5	-86.5	0.00	0.00	0.00
2,600.0	12.00	118.55	2,589.1	2,212.53	-59.7	109.8	-103.7	0.00	0.00	0.00
2,700.0	12.00	118.55	2,686.9	2,114.72	-69.7	128.0	-121.0	0.00	0.00	0.00
2,800.0	12.00	118.55	2,784.7	2,016.90	-79.6	146.3	-138.2	0.00	0.00	0.00
2,900.0	12.00	118.55	2,882.5	1,919.09	-89.5	164.6	-155.5	0.00	0.00	0.00
3,000.0	12.00	118.55	2,980.3	1,821.27	-99.5	182.8	-172.8	0.00	0.00	0.00
3,100.0	12.00	118.55	3,078.1	1,723.46	-109.4	201.1	-190.0	0.00	0.00	0.00
3,200.0	12.00	118.55	3,176.0	1,625.64	-119.4	219.3	-207.3	0.00	0.00	0.00
3,300.0	12.00	118.55	3,273.8	1,527.83	-129.3	237.6	-224.5	0.00	0.00	0.00
3,400.0	12.00	118.55	3,371.6	1,430.01	-139.2	255.9	-241.8	0.00	0.00	0.00
3,500.0	12.00	118.55	3,469.4	1,332.20	-149.2	274.1	-259.0	0.00	0.00	0.00
3,600.0	12.00	118.55	3,567.2	1,234.38	-159.1	292.4	-276.3	0.00	0.00	0.00
3,700.0	12.00	118.55	3,665.0	1,136.57	-169.0	310.6	-293.5	0.00	0.00	0.00
3,800.0	12.00	118.55	3,762.8	1,038.75	-179.0	328.9	-310.8	0.00	0.00	0.00
3,900.0	12.00	118.55	3,860.7	940.94	-188.9	347.2	-328.1	0.00	0.00	0.00
4,000.0	12.00	118.55	3,958.5	843.12	-198.8	365.4	-345.3	0.00	0.00	0.00
4,100.0	12.00	118.55	4,056.3	745.31	-208.8	383.7	-362.6	0.00	0.00	0.00
4,200.0	12.00	118.55	4,154.1	647.49	-218.7	402.0	-379.8	0.00	0.00	0.00
4,300.0	12.00	118.55	4,251.9	549.67	-228.7	420.2	-397.1	0.00	0.00	0.00
4,400.0	12.00	118.55	4,349.7	451.86	-238.6	438.5	-414.3	0.00	0.00	0.00
4,500.0	12.00	118.55	4,447.6	354.04	-248.5	456.7	-431.6	0.00	0.00	0.00
4,600.0	12.00	118.55	4,545.4	256.23	-258.5	475.0	-448.8	0.00	0.00	0.00
4,700.0	12.00	118.55	4,643.2	158.41	-268.4	493.3	-466.1	0.00	0.00	0.00
4,800.0	12.00	118.55	4,741.0	60.60	-278.3	511.5	-483.4	0.00	0.00	0.00
4,900.0	12.00	118.55	4,838.8	-37.22	-288.3	529.8	-500.6	0.00	0.00	0.00

Database:	EDM 5000.1 Single User Db	Local Co-ordinate Reference:	Well LONGHORN V41-B11-10HNB
Company:	BONANZA CREEK ENERGY INC.	TVD Reference:	KB-EST @ 4801.6usft
Project:	WELD COUNTY, COLORADO (NAD 83)	MD Reference:	KB-EST @ 4801.6usft
Site:	NE NE SEC. 10 T3N R63W 6th P.M.	North Reference:	True
Well:	LONGHORN V41-B11-10HNB	Survey Calculation Method:	Minimum Curvature
Wellbore:	ORIGINAL WELLBORE		
Design:	PROPOSAL #2		

Planned Survey

MD (usft)	Inc (°)	Azi (°)	TVD (usft)	SS (usft)	+N/-S (usft)	+E/-W (usft)	Vertical Section (usft)	Dogleg Rate (°/100usft)	Build Rate (°/100usft)	Turn Rate (°/100usft)
5,000.0	12.00	118.55	4,936.6	-135.03	-298.2	548.0	-517.9	0.00	0.00	0.00
5,100.0	12.00	118.55	5,034.4	-232.85	-308.1	566.3	-535.1	0.00	0.00	0.00
5,200.0	12.00	118.55	5,132.3	-330.66	-318.1	584.6	-552.4	0.00	0.00	0.00
5,300.0	12.00	118.55	5,230.1	-428.48	-328.0	602.8	-569.6	0.00	0.00	0.00
END OF TANGENT										
5,364.0	12.00	118.55	5,292.7	-491.08	-334.4	614.5	-580.7	0.00	0.00	0.00
5,400.0	11.28	118.55	5,327.9	-526.34	-337.9	620.9	-586.7	2.00	-2.00	0.00
5,500.0	9.28	118.55	5,426.3	-624.73	-346.4	636.6	-601.5	2.00	-2.00	0.00
5,600.0	7.28	118.55	5,525.3	-723.68	-353.3	649.2	-613.5	2.00	-2.00	0.00
5,700.0	5.28	118.55	5,624.7	-823.07	-358.5	658.8	-622.6	2.00	-2.00	0.00
5,800.0	3.28	118.55	5,724.4	-922.79	-362.1	665.4	-628.7	2.00	-2.00	0.00
5,900.0	1.28	118.55	5,824.3	-1,022.71	-364.0	668.9	-632.0	2.00	-2.00	0.00
EOD TO VERTICAL										
5,964.0	0.00	0.00	5,888.3	-1,086.70	-364.3	669.5	-632.6	2.00	-2.00	0.00
6,000.0	0.00	0.00	5,924.3	-1,122.70	-364.3	669.5	-632.6	0.00	0.00	0.00
KOP (12°/100ft BUR)										
6,054.0	0.00	0.00	5,978.3	-1,176.70	-364.3	669.5	-632.6	0.00	0.00	0.00
6,100.0	5.52	269.80	6,024.2	-1,222.63	-364.3	667.3	-630.4	12.00	12.00	0.00
6,200.0	17.52	269.80	6,122.0	-1,320.44	-364.4	647.4	-610.6	12.00	12.00	0.00
6,300.0	29.52	269.80	6,213.6	-1,411.96	-364.5	607.5	-570.9	12.00	12.00	0.00
6,400.0	41.52	269.80	6,294.8	-1,493.20	-364.7	549.5	-513.1	12.00	12.00	0.00
6,500.0	53.52	269.80	6,362.2	-1,560.61	-365.0	475.9	-439.8	12.00	12.00	0.00
6,600.0	65.52	269.80	6,412.8	-1,611.24	-365.3	389.9	-354.2	12.00	12.00	0.00
START OF TANGENT										
6,679.0	75.00	269.80	6,439.5	-1,637.90	-365.5	315.6	-280.2	12.00	12.00	0.00
6,700.0	75.00	269.80	6,444.9	-1,643.33	-365.6	295.3	-260.0	0.00	0.00	0.00
END OF TANGENT										
6,779.0	75.00	269.80	6,465.4	-1,663.78	-365.9	219.0	-184.0	0.00	0.00	0.00
6,800.0	77.52	269.80	6,470.4	-1,668.77	-365.9	198.6	-163.7	12.00	12.00	0.00
6,900.0	89.52	269.80	6,481.6	-1,680.03	-366.3	99.4	-64.9	12.00	12.00	0.00
HZ LP *NEW*: 1059.2ft FNL & 589.1ft FEL of Sec 10										
6,904.0	90.00	269.80	6,481.6	-1,680.05	-366.3	95.4	-60.9	12.00	12.00	0.00
7,000.0	90.00	269.80	6,481.6	-1,680.05	-366.6	-0.6	34.7	0.00	0.00	0.00
7,100.0	90.00	269.80	6,481.6	-1,680.05	-367.0	-100.6	134.3	0.00	0.00	0.00
7,200.0	90.00	269.80	6,481.6	-1,680.05	-367.3	-200.6	233.9	0.00	0.00	0.00
7,300.0	90.00	269.80	6,481.6	-1,680.05	-367.7	-300.6	333.5	0.00	0.00	0.00
7,400.0	90.00	269.80	6,481.6	-1,680.05	-368.0	-400.6	433.1	0.00	0.00	0.00
7,500.0	90.00	269.80	6,481.6	-1,680.05	-368.4	-500.6	532.7	0.00	0.00	0.00
7,600.0	90.00	269.80	6,481.6	-1,680.05	-368.7	-600.6	632.3	0.00	0.00	0.00
7,700.0	90.00	269.80	6,481.6	-1,680.05	-369.1	-700.5	731.9	0.00	0.00	0.00
7,800.0	90.00	269.80	6,481.6	-1,680.04	-369.4	-800.5	831.5	0.00	0.00	0.00
7,900.0	90.00	269.80	6,481.6	-1,680.04	-369.8	-900.5	931.1	0.00	0.00	0.00
8,000.0	90.00	269.80	6,481.6	-1,680.04	-370.1	-1,000.5	1,030.7	0.00	0.00	0.00
8,100.0	90.00	269.80	6,481.6	-1,680.04	-370.5	-1,100.5	1,130.3	0.00	0.00	0.00
8,200.0	90.00	269.80	6,481.6	-1,680.04	-370.8	-1,200.5	1,229.9	0.00	0.00	0.00
8,300.0	90.00	269.80	6,481.6	-1,680.04	-371.2	-1,300.5	1,329.5	0.00	0.00	0.00
8,400.0	90.00	269.80	6,481.6	-1,680.04	-371.6	-1,400.5	1,429.1	0.00	0.00	0.00
8,500.0	90.00	269.80	6,481.6	-1,680.04	-371.9	-1,500.5	1,528.7	0.00	0.00	0.00
8,600.0	90.00	269.80	6,481.6	-1,680.04	-372.3	-1,600.5	1,628.3	0.00	0.00	0.00
8,700.0	90.00	269.80	6,481.6	-1,680.04	-372.6	-1,700.5	1,727.9	0.00	0.00	0.00
8,800.0	90.00	269.80	6,481.6	-1,680.04	-373.0	-1,800.5	1,827.5	0.00	0.00	0.00
8,900.0	90.00	269.80	6,481.6	-1,680.04	-373.3	-1,900.5	1,927.1	0.00	0.00	0.00
9,000.0	90.00	269.80	6,481.6	-1,680.03	-373.7	-2,000.5	2,026.7	0.00	0.00	0.00

Database:	EDM 5000.1 Single User Db	Local Co-ordinate Reference:	Well LONGHORN V41-B11-10HNB
Company:	BONANZA CREEK ENERGY INC.	TVD Reference:	KB-EST @ 4801.6usft
Project:	WELD COUNTY, COLORADO (NAD 83)	MD Reference:	KB-EST @ 4801.6usft
Site:	NE NE SEC. 10 T3N R63W 6th P.M.	North Reference:	True
Well:	LONGHORN V41-B11-10HNB	Survey Calculation Method:	Minimum Curvature
Wellbore:	ORIGINAL WELLBORE		
Design:	PROPOSAL #2		

Planned Survey

MD (usft)	Inc (°)	Azi (°)	TVD (usft)	SS (usft)	+N/-S (usft)	+E/-W (usft)	Vertical Section (usft)	Dogleg Rate (°/100usft)	Build Rate (°/100usft)	Turn Rate (°/100usft)
9,100.0	90.00	269.80	6,481.6	-1,680.03	-374.0	-2,100.5	2,126.3	0.00	0.00	0.00
9,200.0	90.00	269.80	6,481.6	-1,680.03	-374.4	-2,200.5	2,225.9	0.00	0.00	0.00
9,300.0	90.00	269.80	6,481.6	-1,680.03	-374.7	-2,300.5	2,325.4	0.00	0.00	0.00
9,400.0	90.00	269.80	6,481.6	-1,680.03	-375.1	-2,400.5	2,425.0	0.00	0.00	0.00
9,500.0	90.00	269.80	6,481.6	-1,680.03	-375.5	-2,500.5	2,524.6	0.00	0.00	0.00
9,600.0	90.00	269.80	6,481.6	-1,680.03	-375.8	-2,600.5	2,624.2	0.00	0.00	0.00
9,700.0	90.00	269.80	6,481.6	-1,680.03	-376.2	-2,700.5	2,723.8	0.00	0.00	0.00
9,800.0	90.00	269.80	6,481.6	-1,680.02	-376.5	-2,800.5	2,823.4	0.00	0.00	0.00
9,900.0	90.00	269.80	6,481.6	-1,680.02	-376.9	-2,900.5	2,923.0	0.00	0.00	0.00
10,000.0	90.00	269.80	6,481.6	-1,680.02	-377.2	-3,000.5	3,022.6	0.00	0.00	0.00
10,100.0	90.00	269.80	6,481.6	-1,680.02	-377.6	-3,100.5	3,122.2	0.00	0.00	0.00
10,200.0	90.00	269.79	6,481.6	-1,680.02	-378.0	-3,200.5	3,221.8	0.00	0.00	0.00
10,300.0	90.00	269.79	6,481.6	-1,680.02	-378.3	-3,300.5	3,321.4	0.00	0.00	0.00
10,400.0	90.00	269.79	6,481.6	-1,680.01	-378.7	-3,400.5	3,421.0	0.00	0.00	0.00
10,500.0	90.00	269.79	6,481.6	-1,680.01	-379.0	-3,500.5	3,520.6	0.00	0.00	0.00
10,600.0	90.00	269.79	6,481.6	-1,680.01	-379.4	-3,600.5	3,620.2	0.00	0.00	0.00
10,700.0	90.00	269.79	6,481.6	-1,680.01	-379.7	-3,700.5	3,719.8	0.00	0.00	0.00
10,800.0	90.00	269.79	6,481.6	-1,680.01	-380.1	-3,800.5	3,819.4	0.00	0.00	0.00
10,900.0	90.00	269.79	6,481.6	-1,680.00	-380.5	-3,900.5	3,919.0	0.00	0.00	0.00
11,000.0	90.00	269.79	6,481.6	-1,680.00	-380.8	-4,000.5	4,018.6	0.00	0.00	0.00
BHL: 1061ft FNL & 470ft FWL of Sec 10										
11,071.3	90.00	269.79	6,481.6	-1,680.00	-381.1	-4,071.8	4,089.6	0.00	0.00	0.00

Targets

Target Name	Dip Angle (°)	Dip Dir. (°)	TVD (usft)	+N/-S (usft)	+E/-W (usft)	Northing (usft)	Easting (usft)	Latitude	Longitude
KOP - LONGHORN V - hit/miss target - Shape - Point	0.00	0.00	5,978.3	-364.3	669.5	1,333,728.40	3,302,949.11	40.244394	-104.414716
ABDN VERT CERVI 2 - plan misses target center by 1237.8usft at 9500.0usft MD (6481.6 TVD, -375.5 N, -2500.6 E) - Circle (radius 30.0)	0.00	0.00	7,536.6	271.9	-2,502.9	1,334,325.78	3,299,769.32	40.246140	-104.426080
ABDN VERT CERVI 1 - plan misses target center by 1299.8usft at 10733.6usft MD (6481.6 TVD, -379.9 N, -3734.1 E) - Circle (radius 30.0)	0.00	0.00	7,555.6	352.2	-3,736.7	1,334,391.01	3,298,534.63	40.246360	-104.430500
HZ LP *NEW* - LONG - plan misses target center by 3.5usft at 6846.1usft MD (6478.1 TVD, -366.1 N, 153.2 E) - Point	0.00	0.00	6,481.6	-366.1	153.5	1,333,720.28	3,302,433.24	40.244389	-104.416564
BHL - LONGHORN V - plan hits target center - Point	0.00	0.00	6,481.6	-381.1	-4,071.9	1,333,653.72	3,298,208.52	40.244347	-104.431700

Database:	EDM 5000.1 Single User Db	Local Co-ordinate Reference:	Well LONGHORN V41-B11-10HNB
Company:	BONANZA CREEK ENERGY INC.	TVD Reference:	KB-EST @ 4801.6usft
Project:	WELD COUNTY, COLORADO (NAD 83)	MD Reference:	KB-EST @ 4801.6usft
Site:	NE NE SEC. 10 T3N R63W 6th P.M.	North Reference:	True
Well:	LONGHORN V41-B11-10HNB	Survey Calculation Method:	Minimum Curvature
Wellbore:	ORIGINAL WELLBORE		
Design:	PROPOSAL #2		

Plan Annotations

MD (usft)	TVD (usft)	Local Coordinates		Comment
		+N/-S (usft)	+E/-W (usft)	
0.0	0.0	0.0	0.0	SHL: 693ft FNL & 684ft FEL of Sec 10
1,700.0	1,700.0	0.0	0.0	START NUDGE (2°/100ft BUR)
2,300.0	2,295.6	-29.9	55.0	EOB TO 12° INC
5,364.0	5,292.7	-334.4	614.5	END OF TANGENT
5,964.0	5,888.3	-364.3	669.5	EOD TO VERTICAL
6,054.0	5,978.3	-364.3	669.5	KOP (12°/100ft BUR)
6,679.0	6,439.5	-365.5	315.6	START OF TANGENT
6,779.0	6,465.4	-365.9	219.0	END OF TANGENT
6,904.0	6,481.6	-366.3	95.4	HZ LP *NEW*: 1059.2ft FNL & 589.1ft FEL of Sec 10
11,071.3	6,481.6	-381.1	-4,071.8	BHL: 1061ft FNL & 470ft FWL of Sec 10