

# **LEGEND:**

 **PROPOSED LOCATION**



**UELS, LLC**  
Corporate Office \* 85 South 200 East  
Vernal, UT 84078 \* (435) 789-1017

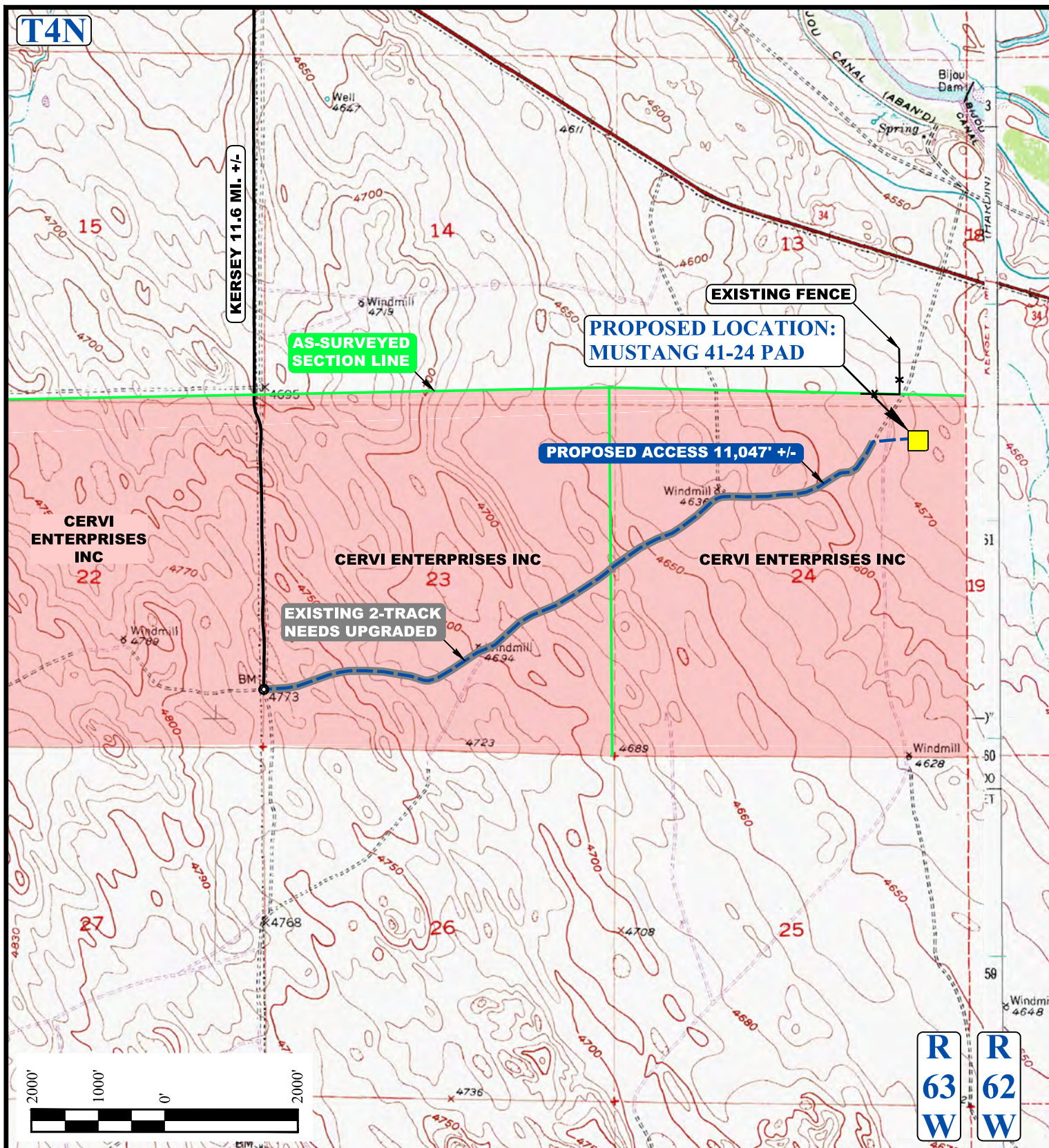


## **BONANZA CREEK ENERGY OPERATING COMPANY, LLC**

**MUSTANG 41-24 PAD**  
NE 1/4 NE 1/4, SECTION 24, T4N, R63W, 6th P.M.  
WELD COUNTY, COLORADO

SURVEYED BY	G.W., J.C.	09-15-16	SCALE
DRAWN BY	M.F.D.	11-23-16	1 : 100,000
<b>ACCESS ROAD MAP</b>			<b>TOPO A</b>





NOTE: PARCEL DATA SHOWN HAS BEEN OBTAINED FROM VARIOUS SOURCES AND SHOULD BE USED FOR MAPPING, GRAPHIC AND PLANNING PURPOSES ONLY. NO WARRANTY IS MADE BY UINTAH ENGINEERING AND LAND SURVEYING (UELS) FOR ACCURACY OF THE PARCEL DATA.

#### LEGEND:

- EXISTING ROAD
- PROPOSED ROAD
- EXISTING 2-TRACK
- x x EXISTING FENCE
- AS SURVEYED SECTION LINE



**UELS, LLC**  
Corporate Office \* 85 South 200 East  
Vernal, UT 84078 \* (435) 789-1017



#### BONANZA CREEK ENERGY OPERATING COMPANY, LLC

**MUSTANG 41-24 PAD**  
NE 1/4 NE 1/4, SECTION 24, T4N, R63W, 6th P.M.  
WELD COUNTY, COLORADO

SURVEYED BY	G.W., J.C.	09-15-16	SCALE
DRAWN BY	M.F.D.	11-23-16	1 : 24,000
<b>ACCESS ROAD MAP</b>			<b>TOPO B</b>