

**SANDRIDGE EXPLORATION & PRODUCTION, LLC
HEBRON 12 ANNEX PAD
SECTION 12, T7N, R81W &
SECTION 7, T7N, R80W, 6th P.M.
JACKSON COUNTY, COLORADO**

[illegible]

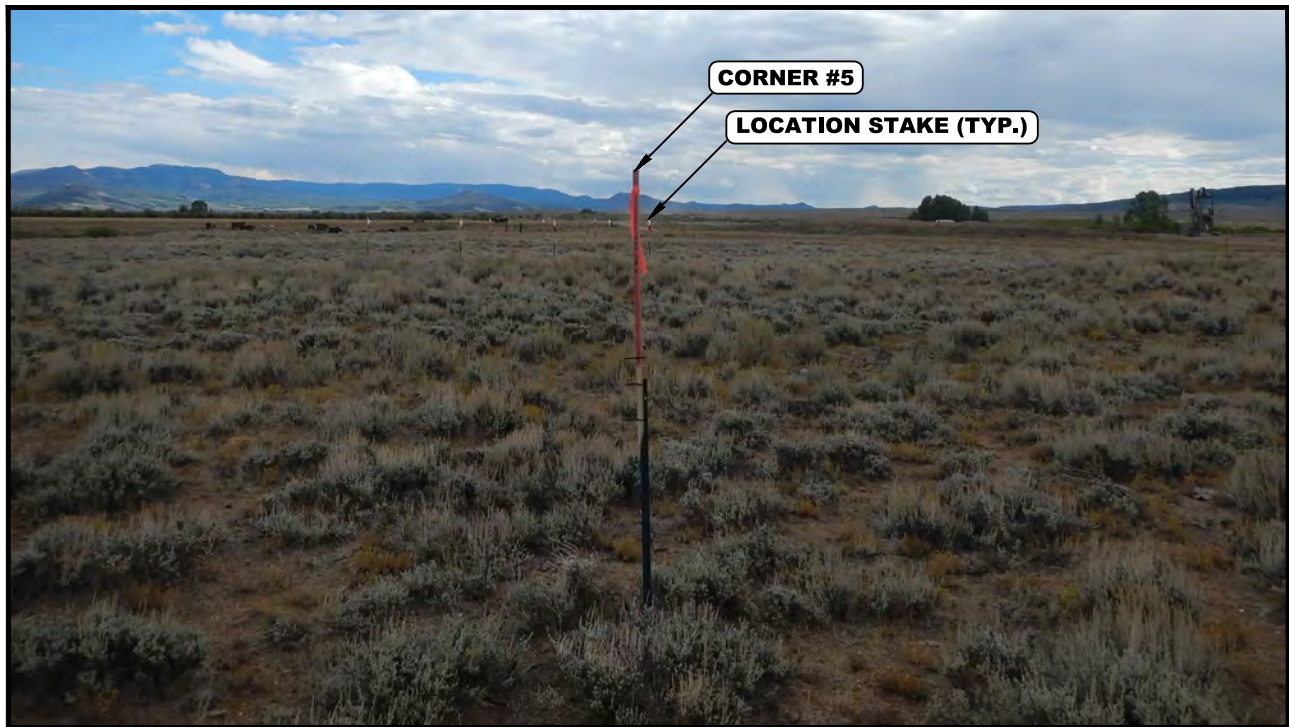


PHOTO: VIEW FROM CORNER #5 TO LOCATION STAKES

CAMERA ANGLE: SOUTHERLY



PHOTO: VIEW FROM BEGINNING OF EXISTING ACCESS

CAMERA ANGLE: NORTHERLY

SandRidge Exploration & Production, LLC

HEBRON 12 ANNEX PAD
NE 1/4 NE 1/4, SECTION 12, T7N, R81W, 6th P.M. &
NW 1/4 NW 1/4, SECTION 7, T7N, R80W, 6th P.M.
JACKSON COUNTY, COLORADO

TAKEN BY	C.M., D.S.	09-01-16	
DRAWN BY	C.D.L.	09-20-16	
LOCATION PHOTOS			PHOTO



UELS, LLC
Corporate Office * 85 South 200 East
Vernal, UT 84078 * (435) 789-1017



PHOTO: VIEW OF LOCATION STAKES

CAMERA ANGLE: NORTHERLY

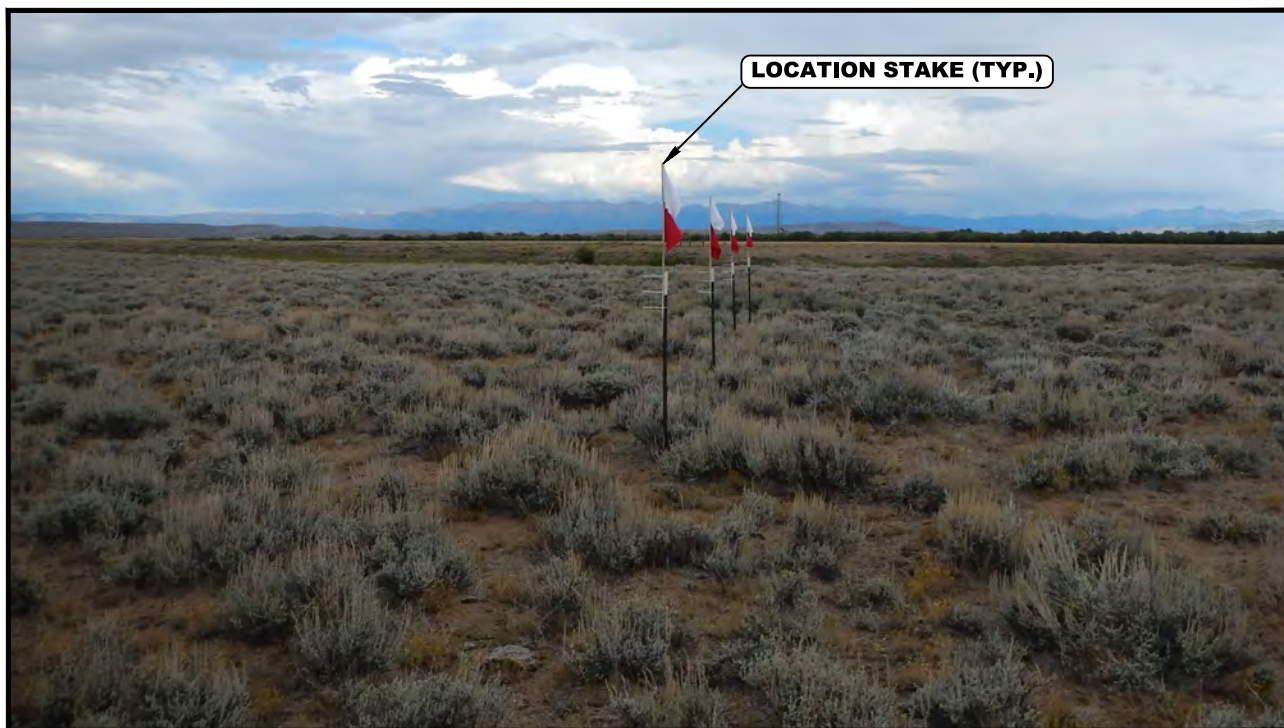


PHOTO: VIEW OF LOCATION STAKES

CAMERA ANGLE: EASTERLY

SandRidge Exploration & Production, LLC

HEBRON 12 ANNEX PAD
NE 1/4 NE 1/4, SECTION 12, T7N, R81W, 6th P.M. &
NW 1/4 NW 1/4, SECTION 7, T7N, R80W, 6th P.M.
JACKSON COUNTY, COLORADO

TAKEN BY	C.M., D.S.	09-01-16	
DRAWN BY	C.D.L.	09-20-16	
LOCATION PHOTOS			PHOTO 2



UELS, LLC
Corporate Office * 85 South 200 East
Vernal, UT 84078 * (435) 789-1017



PHOTO: VIEW OF LOCATION STAKES

CAMERA ANGLE: SOUTHERLY

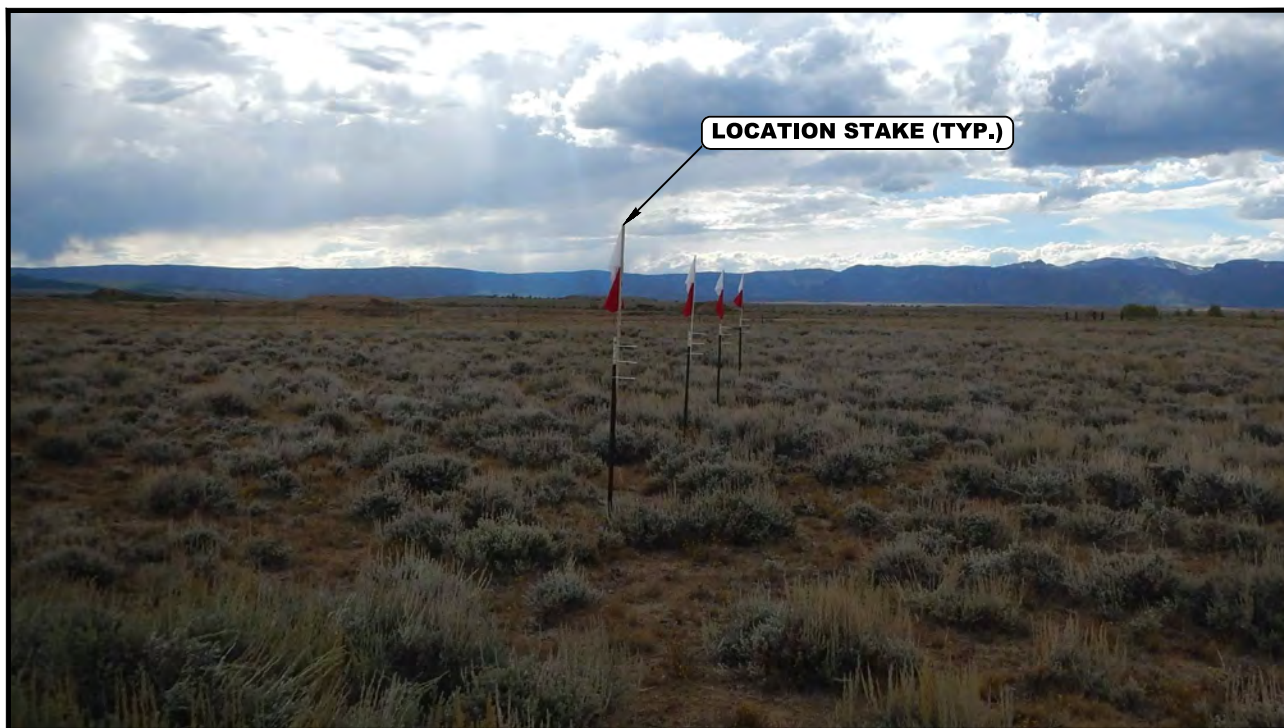


PHOTO: VIEW OF LOCATION STAKES

CAMERA ANGLE: WESTERLY

SandRidge Exploration & Production, LLC

HEBRON 12 ANNEX PAD
NE 1/4 NE 1/4, SECTION 12, T7N, R81W, 6th P.M. &
NW 1/4 NW 1/4, SECTION 7, T7N, R80W, 6th P.M.
JACKSON COUNTY, COLORADO

TAKEN BY	C.M., D.S.	09-01-16	
DRAWN BY	C.D.L.	09-20-16	
LOCATION PHOTOS			PHOTO 3



UELS, LLC
Corporate Office * 85 South 200 East
Vernal, UT 84078 * (435) 789-1017

T7N, R80W, 6th P.M.

LEGEND:

- 90° SYMBOL
- PROPOSED WELLHEAD.
- TOP OF NIOBRARA.
- LANDING POINT.
- TARGET BOTTOM HOLE.
- SECTION CORNERS LOCATED. (NAD 83)
- SECTION CORNERS RE-ESTABLISHED. (Not Set on Ground.) (NAD 83)

LINE TABLE

LINE	DIRECTION	LENGTH
L1	N12°38'19"W	735.83'
L2	N16°09'52"W	71.84'

BASIS OF BEARINGS
BASIS OF BEARINGS IS A G.P.S. OBSERVATION

BASIS OF ELEVATION
SPOT ELEVATION AT THE SOUTHEAST CORNER OF SECTION 29, T7N, R80W, 6th P.M., TAKEN FROM THE COALMONT QUADRANGLE, COLORADO, JACKSON COUNTY 7.5 MINUTE QUAD. (TOPOGRAPHIC MAP) PUBLISHED BY THE UNITED STATES DEPARTMENT OF THE INTERIOR, GEOLOGICAL SURVEY. SAID ELEVATION IS MARKED AS BEING 8156 FEET.

PDOP = 1.3

NAD 83 (SURFACE LOCATION)
LATITUDE = 40°35'53.33" (40.598147)
LONGITUDE = 106°25'30.64" (106.425178)

NAD 27 (SURFACE LOCATION)
LATITUDE = 40°35'53.41" (40.598169)
LONGITUDE = 106°25'28.53" (106.424592)

STATE PLANE NAD 83 (CO. NORTH)
N: 1462087.17 E: 2743086.13

STATE PLANE NAD 27 (CO. NORTH)
N: 462085.04 E: 1743242.38

NAD 83 (TOP OF NIOBRARA)
LATITUDE = 40°35'54.02" (40.598339)
LONGITUDE = 106°25'30.90" (106.425250)

NAD 27 (TOP OF NIOBRARA)
LATITUDE = 40°35'54.09" (40.598358)
LONGITUDE = 106°25'28.79" (106.424664)

STATE PLANE NAD 83 (CO. NORTH)
N: 1462156.34 E: 2743066.84

STATE PLANE NAD 27 (CO. NORTH)
N: 462154.22 E: 1743223.09

NAD 83 (LANDING POINT)
LATITUDE = 40°36'01.11" (40.600308)
LONGITUDE = 106°25'32.99" (106.425831)

NAD 27 (LANDING POINT)
LATITUDE = 40°36'01.18" (40.600328)
LONGITUDE = 106°25'30.88" (106.425244)

STATE PLANE NAD 83 (CO. NORTH)
N: 1462875.65 E: 2742913.21

STATE PLANE NAD 27 (CO. NORTH)
N: 462873.52 E: 1743069.46

NAD 83 (TARGET BOTTOM HOLE)
LATITUDE = 40°37'45.22" (40.629228)
LONGITUDE = 106°25'34.51" (106.426253)

NAD 27 (TARGET BOTTOM HOLE)
LATITUDE = 40°37'45.29" (40.629247)
LONGITUDE = 106°25'32.40" (106.425667)

STATE PLANE NAD 83 (CO. NORTH)
N: 1473412.02 E: 2742905.67

STATE PLANE NAD 27 (CO. NORTH)
N: 473409.94 E: 1743061.83

CERTIFICATE TO RECORD
THIS IS TO CERTIFY THAT THE ABOVE AND HEREIN CONTAINED NOTES OF ACTUAL SURVEYS MADE BY ME OR UNDER MY SUPERVISION AND THAT THE SAME ARE TRUE AND CORRECT TO THE BEST OF MY KNOWLEDGE AND BELIEF.
[Signature]
REGISTERED LAND SURVEYOR
REGISTRATION NO. 28285
STATE OF COLORADO
JUL 16 2016

REV: 1 09-30-16 M.D. (ADD TOP OF NIOBRARA & LP)

SandRidge Exploration & Production, LLC

GRIZZLY 0881 1-H36
LOT 1, SECTION 7, T7N, R80W, 6th P.M.
JACKSON COUNTY, COLORADO

UELS, L.L.C.
Corporate Office * 85 South 200 East
Vernal, UT 84078 * (435) 789-1017

ENGINEERING & LAND SURVEYING








U.S. ENGINEER
CHAD MEIERS, D.S.
T.B.
09-01-16
09-08-16
SCALE
1" = 1000'

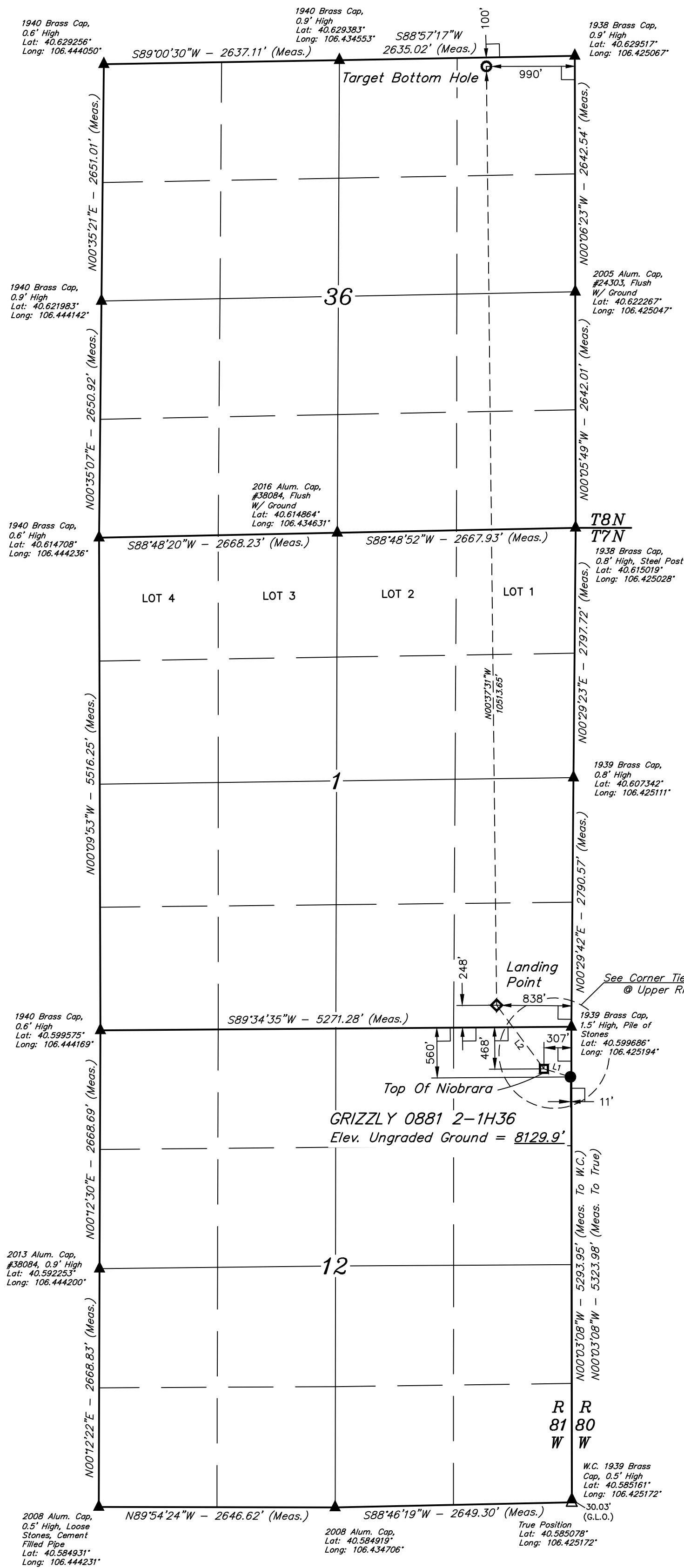
WELL LOCATION PLAT

WELL LOCATION PLAT

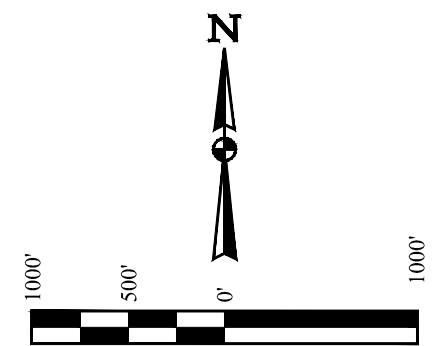
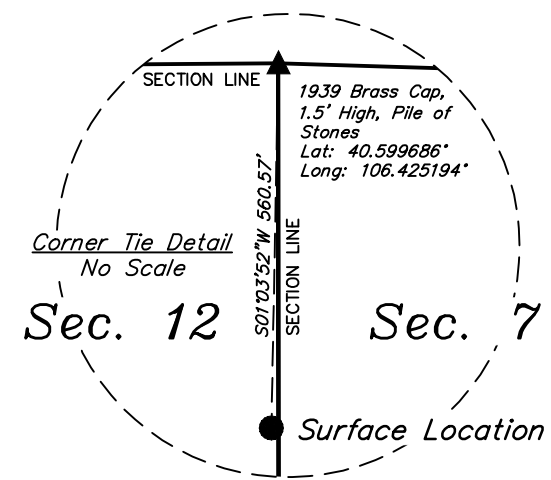
T7N, R81W, 6th P.M.

LEGEND:

-  = 90° SYMBOL
 = PROPOSED WELLHEAD.
 = TOP OF NIOBRARA.
 = LANDING POINT.
 = TARGET BOTTOM HOLE.
 = SECTION CORNERS LOCATED. (NAD 83)
 = SECTION CORNERS RE-ESTABLISHED. (Not Set on Ground.) (NAD 83)



LINE TABLE		
LINE	DIRECTION	LENGTH
L1	N73°05'16"W	309.38'
L2	N36°39'48"W	887.61'



BASIS OF BEARINGS

BASIS OF BEARINGS IS A G.P.S. OBSERVATION

BASIS OF ELEVATION

SPOT ELEVATION AT THE SOUTHEAST CORNER OF SECTION 29, T7N, R80W, 6th P.M., TAKEN FROM THE COALMONT QUADRANGLE, COLORADO, JACKSON COUNTY 7.5 MINUTE QUAD. (TOPOGRAPHIC MAP) PUBLISHED BY THE UNITED STATES DEPARTMENT OF THE INTERIOR, GEOLOGICAL SURVEY. SAID ELEVATION IS MARKED AS BEING 8156 FEET.

PDOP = 1.6

NAD 83 (SURFACE LOCATION)
LATITUDE = 40°35'53.33" (40.598147)
LONGITUDE = 106°25'30.84" (106.425233)
NAD 27 (SURFACE LOCATION)
LATITUDE = 40°35'53.41" (40.598169)
LONGITUDE = 106°25'28.72" (106.424644)
STATE PLANE NAD 83 (CO. NORTH)
N: 1462087.35 E: 2743071.13
STATE PLANE NAD 27 (CO. NORTH)
N: 462085.92 E: 1743227.38

NAD 83 (TOP OF NIOBRARA)
LATITUDE = 40°35'54.22" (40.598394)
LONGITUDE = 106°25'34.67" (106.426297)
NAD 27 (TOP OF NIOBRARA)
LATITUDE = 40°35'54.30" (40.598471)
LONGITUDE = 106°25'32.56" (106.425711)
STATE PLANE NAD 83 (CO. NORTH)
N: 1462180.32 E: 2742776.18
STATE PLANE NAD 27 (CO. NORTH)
N: 462178.19 E: 1742932.44

NAD 83 (LANDING POINT)
LATITUDE = 40°36'01.25" (40.600347)
LONGITUDE = 106°25'41.54" (106.428206)
NAD 27 (LANDING POINT)
LATITUDE = 40°36'01.33" (40.600369)
LONGITUDE = 106°25'39.43" (106.427619)
STATE PLANE NAD 83 (CO. NORTH)
N: 1462897.38 E: 2742253.67
STATE PLANE NAD 27 (CO. NORTH)
N: 462895.25 E: 1742409.92

NAD 83 (TARGET BOTTOM HOLE)
LATITUDE = 40°37'45.10" (40.629194)
LONGITUDE = 106°25'43.07" (106.428631)
NAD 27 (TARGET BOTTOM HOLE)
LATITUDE = 40°37'45.17" (40.629214)
LONGITUDE = 106°25'40.96" (106.428044)
STATE PLANE NAD 83 (CO. NORTH)
N: 1473406.69 E: 2742245.88
STATE PLANE NAD 27 (CO. NORTH)
N: 473404.61 E: 1742402.03

CERTIFICATE

THIS IS TO CERTIFY THAT THE ABOVE PLAN WAS PREPARED FROM FIELD NOTES OF ACTUAL SURVEYS MADE BY ME OR UNDER MY SUPERVISION, AND THAT THE SAME ARE TRUE AND CORRECT TO THE BEST OF MY KNOWLEDGE AND BELIEF.

REGISTERED LAND SURVEYOR
REGISTRATION NO. 28285
STATE OF COLORADO
09-30-16

REV: 1 09-30-16 M.D. (ADD TOP OF NIOBRARA & LP)

SandRidge Exploration & Production, LLC

GRIZZLY 0881 2-1H36
NE 1/4 NE 1/4, SECTION 12, T7N, R81W, 6th P.M.
JACKSON COUNTY, COLORADO










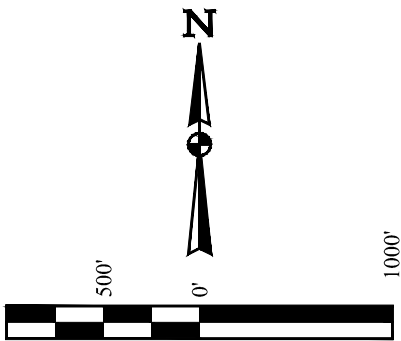
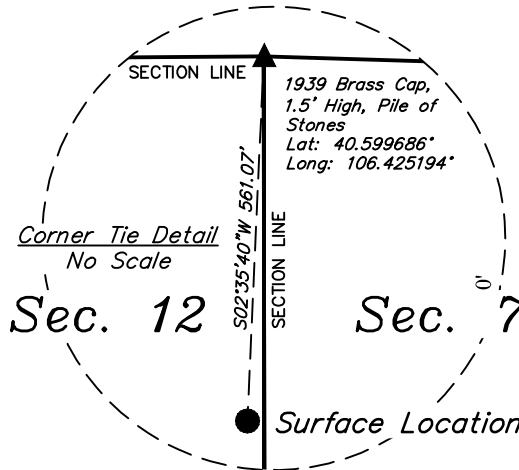
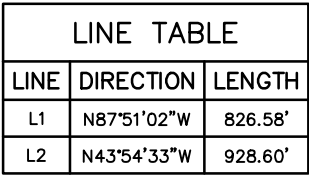
UELS, LLC
Corporate Office * 85 South 200 East
Vernal, UT 84078 * (435) 789-1017

SURVEYED BY	CHAD MEIERS, D.S.	09-01-16	SCALE
DRAWN BY	T.B.	09-08-16	1" = 1000'

WELL LOCATION PLAT

LEGEND:

-  = 90° SYMBOL
-  = PROPOSED WELLHEAD.
-  = TOP OF NIOBRARA.
-  = LANDING POINT.
-  = TARGET BOTTOM HOLE
-  = SECTION CORNERS LOCATED. (NAD 83)
-  = SECTION CORNERS RE-ESTABLISHED. (Not Set on Ground.) (NAD 83)



BASIS OF BEARINGS

BASIS OF BEARINGS IS A G.P.S. OBSERVATION

BASIS OF ELEVATION

SPOT ELEVATION AT THE SOUTHEAST CORNER OF SECTION 29, T7N, R80W, 6th P.M., TAKEN FROM THE COALMONT QUADRANGLE, COLORADO, JACKSON COUNTY 7.5 MINUTE QUAD. (TOPOGRAPHIC MAP) PUBLISHED BY THE UNITED STATES DEPARTMENT OF THE INTERIOR, GEOLOGICAL SURVEY. SAID ELEVATION IS MARKED AS BEING 8156 FEET.

PDOP = 1.6

NAD 83 (SURFACE LOCATION)
LATITUDE = 40°35'53.33" (40.598147)
LONGITUDE = 106°25'31.03" (106.425286)

NAD 27 (SURFACE LOCATION)
LATITUDE = 40°35'53.41" (40.598169)
LONGITUDE = 106°25'28.92" (106.424700)

STATE PLANE NAD 83 (CO. NORTH)
N: 1462087.49 E: 2743056.15

STATE PLANE NAD 27 (CO. NORTH)
N: 462085.36 E: 1743212.41

NAD 83 (TOP OF NIOBRARA)
 LATITUDE = 40°35'53.64" (40.598233)
 LONGITUDE = 106°25'41.73" (106.428258)
NAD 27 (TOP OF NIOBRARA)
 LATITUDE = 40°35'53.71" (40.598253)
 LONGITUDE = 106°25'39.62" (106.427672)
STATE PLANE NAD 83 (CO. NORTH)
 N: 1462126.87 E: 2742230.85
STATE PLANE NAD 27 (CO. NORTH)
 N: 462124.74 E: 1742387.11

NAD 83 (LANDING POINT)
 LATITUDE = 40°36'00.24" (40.600067)
 LONGITUDE = 106°25'47.08" (106.430578)
NAD 27 (LANDING POINT)
 LATITUDE = 40°36'00.32" (40.600089)
 LONGITUDE = 106°25'47.97" (106.429992)
STATE PLANE NAD 83 (CO. NORTH)
 N: 1462802.11 E: 2741593.96
STATE PLANE NAD 27 (CO. NORTH)
 N: 462799.97 E: 1741750.21

NAD 83 (TARGET BOTTOM HOLE)
LATITUDE = 40°37'44.97" (40.629158)
LONGITUDE = 106°25'51.63" (106.431008)
NAD 27 (TARGET BOTTOM HOLE)
LATITUDE = 40°37'45.05" (40.629181)
LONGITUDE = 106°25'49.51" (106.430419)
STATE PLANE NAD 83 (CO. NORTH)
N: 1473401.36 E: 2741586.08
STATE PLANE NAD 27 (CO. NORTH)
N: 473399.28 E: 1741742.24

CERTIFICATE

THIS IS TO CERTIFY THAT THE ABOVE PLAT WAS PREPARED FROM FIELD NOTES OF ACTUAL SURVEYS MADE BY ME OR UNDER MY SUPERVISION AND THAT THE SAME ARE TRUE AND CORRECT TO THE BEST OF MY KNOWLEDGE AND BELIEF.

REGISTERED LAND SURVEYOR
REGISTRATION NO. 28285
STATE OF COLORADO

REV: 1 09-30-16 M.D. (ADD TOP OF NIOBRARA & LP)

SandRidge Exploration & Production, LLC

GRIZZLY 0881 3-1H36
NE 1/4 NE 1/4, SECTION 12, T7N, R81W, 6th P.M.
JACKSON COUNTY, COLORADO



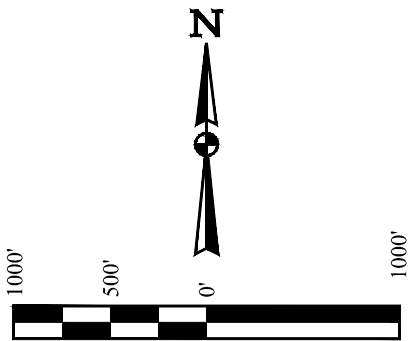
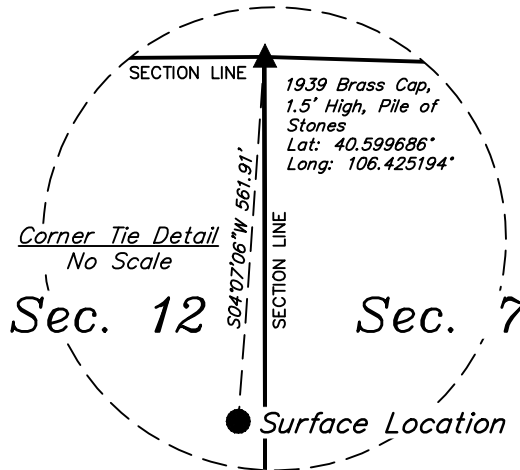
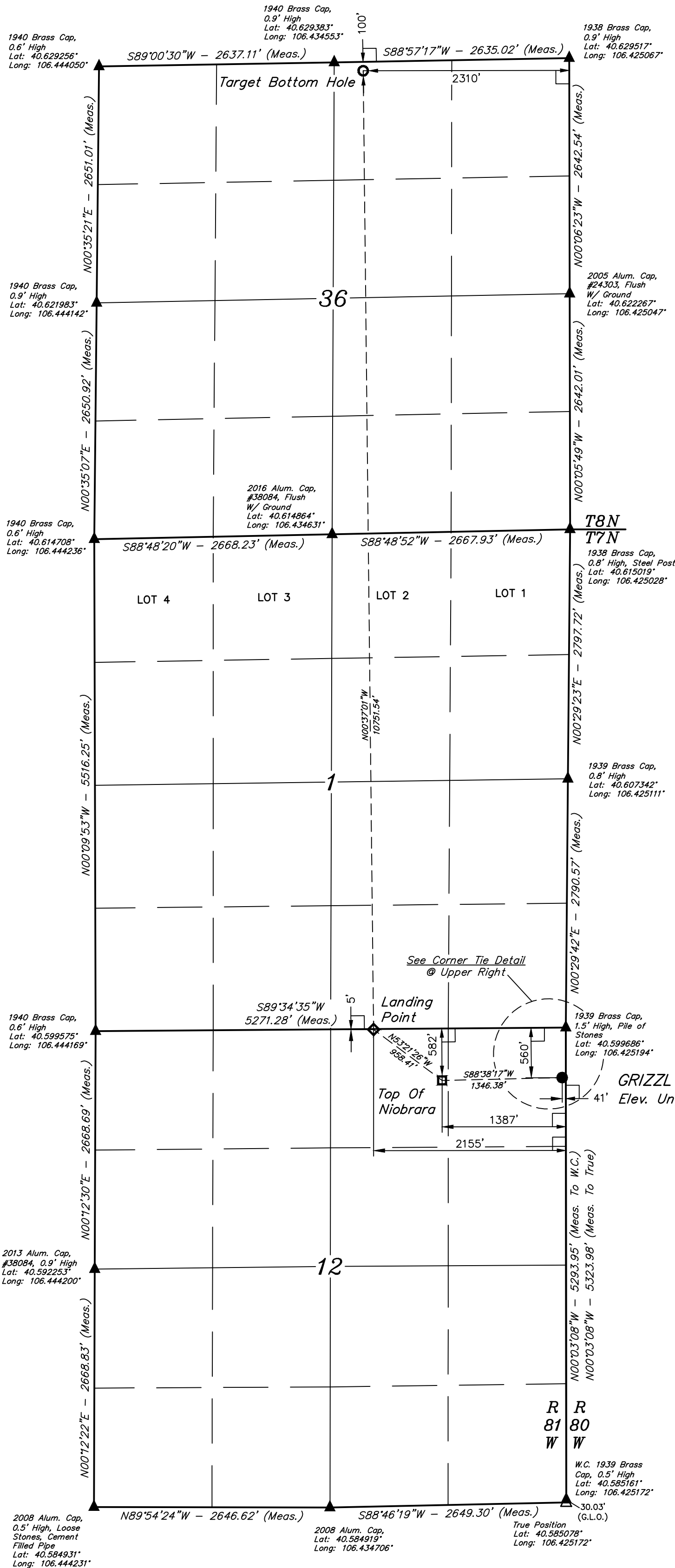
UELS, LLC
Corporate Office * 85 South 200 East
Vernal, UT 84078 * (435) 789-1017

SURVEYED BY	CHAD MEIERS, D.S.	09-01-16	SCALE
DRAWN BY	T.B.	09-08-16	1" = 1000'

WELL LOCATION PLAT

T7N, R81W, 6th P.M.

- LEGEND:
- 90° SYMBOL
 - PROPOSED WELLHEAD.
 - TOP OF NIOBRARA.
 - LANDING POINT.
 - TARGET BOTTOM HOLE.
 - SECTION CORNERS LOCATED. (NAD 83)
 - SECTION CORNERS RE-ESTABLISHED. (Not Set on Ground.) (NAD 83)



BASIS OF BEARINGS

BASIS OF ELEVATION

SPOT ELEVATION AT THE SOUTHEAST CORNER OF SECTION 29, T7N, R80W, 6th P.M., TAKEN FROM THE COALMONT QUADRANGLE, COLORADO, JACKSON COUNTY 7.5 MINUTE QUAD. (TOPOGRAPHIC MAP) PUBLISHED BY THE UNITED STATES DEPARTMENT OF THE INTERIOR, GEOLOGICAL SURVEY. SAID ELEVATION IS MARKED AS BEING 8156 FEET.

PDOP = 1.3

NAD 83 (SURFACE LOCATION)	
LATITUDE = 40°35'53.33" (40.598147)	
LONGITUDE = 106°25'31.22" (106.425339)	
NAD 27 (SURFACE LOCATION)	
LATITUDE = 40°35'53.41" (40.598169)	
LONGITUDE = 106°25'29.11" (106.424753)	
STATE PLANE NAD 83 (CO. NORTH)	
N: 1462087.67 E: 2743041.20	
STATE PLANE NAD 27 (CO. NORTH)	
N: 462085.55 E: 1743197.46	

NAD 83 (TOP OF NIOBRARA)	
LATITUDE = 40°35'53.01" (40.598058)	
LONGITUDE = 106°25'48.67" (106.430186)	
NAD 27 (TOP OF NIOBRARA)	
LATITUDE = 40°35'53.09" (40.598081)	
LONGITUDE = 106°25'46.55" (106.429597)	
STATE PLANE NAD 83 (CO. NORTH)	
N: 1462069.37 E: 2741695.51	
STATE PLANE NAD 27 (CO. NORTH)	
N: 462067.24 E: 1741851.77	

NAD 83 (LANDING POINT)	
LATITUDE = 40°35'58.66" (40.599628)	
LONGITUDE = 106°25'58.63" (106.432953)	
NAD 27 (LANDING POINT)	
LATITUDE = 40°35'58.74" (40.599650)	
LONGITUDE = 106°25'56.52" (106.432367)	
STATE PLANE NAD 83 (CO. NORTH)	
N: 1462648.93 E: 2740932.68	
STATE PLANE NAD 27 (CO. NORTH)	
N: 462646.79 E: 1741088.94	

NAD 83 (TARGET BOTTOM HOLE)	
LATITUDE = 40°37'44.85" (40.629125)	
LONGITUDE = 106°26'00.18" (106.433383)	
NAD 27 (TARGET BOTTOM HOLE)	
LATITUDE = 40°37'44.93" (40.629147)	
LONGITUDE = 106°25'58.07" (106.432797)	
STATE PLANE NAD 83 (CO. NORTH)	
N: 1473396.03 E: 2740926.29	
STATE PLANE NAD 27 (CO. NORTH)	
N: 473393.95 E: 1741082.45	

CERTIFICATE OF REGISTRATION

THIS IS TO CERTIFY THAT THE ABOVE SURVEY WAS MADE BY ME OR UNDER MY SUPERVISION AND THAT THE SAME ARE TRUE AND CORRECT TO THE BEST OF MY KNOWLEDGE AND BELIEF.

REGISTERED LAND SURVEYOR

REGISTRATION NO. 28285

STATE OF COLORADO

EXPIRATION DATE: 09-30-16

REV: 1 09-30-16 M.D. (ADD TOP OF NIOBRARA & LP)

SandRidge Exploration & Production, LLC

GRIZZLY 0881 4-1H36

NE 1/4 NE 1/4, SECTION 12, T7N, R81W, 6th P.M.

JACKSON COUNTY, COLORADO



UELS, LLC

Corporate Office * 85 South 200 East

Vernal, UT 84078 * (435) 789-1017

SURVEYED BY	CHAD MEIERS, D.S.	09-01-16	SCALE
DRAWN BY	T.B.	09-08-16	1" = 1000'

WELL LOCATION PLAT

T7N, R80W, 6th P.M.

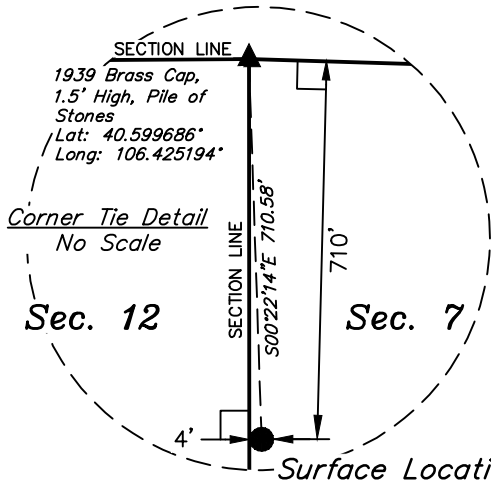
SandRidge Exploration & Production, LLC

HEBRON 0781 1-12H
LOT 1, SECTION 7, T7N, R80W, 6th P.M.
JACKSON COUNTY, COLORADO

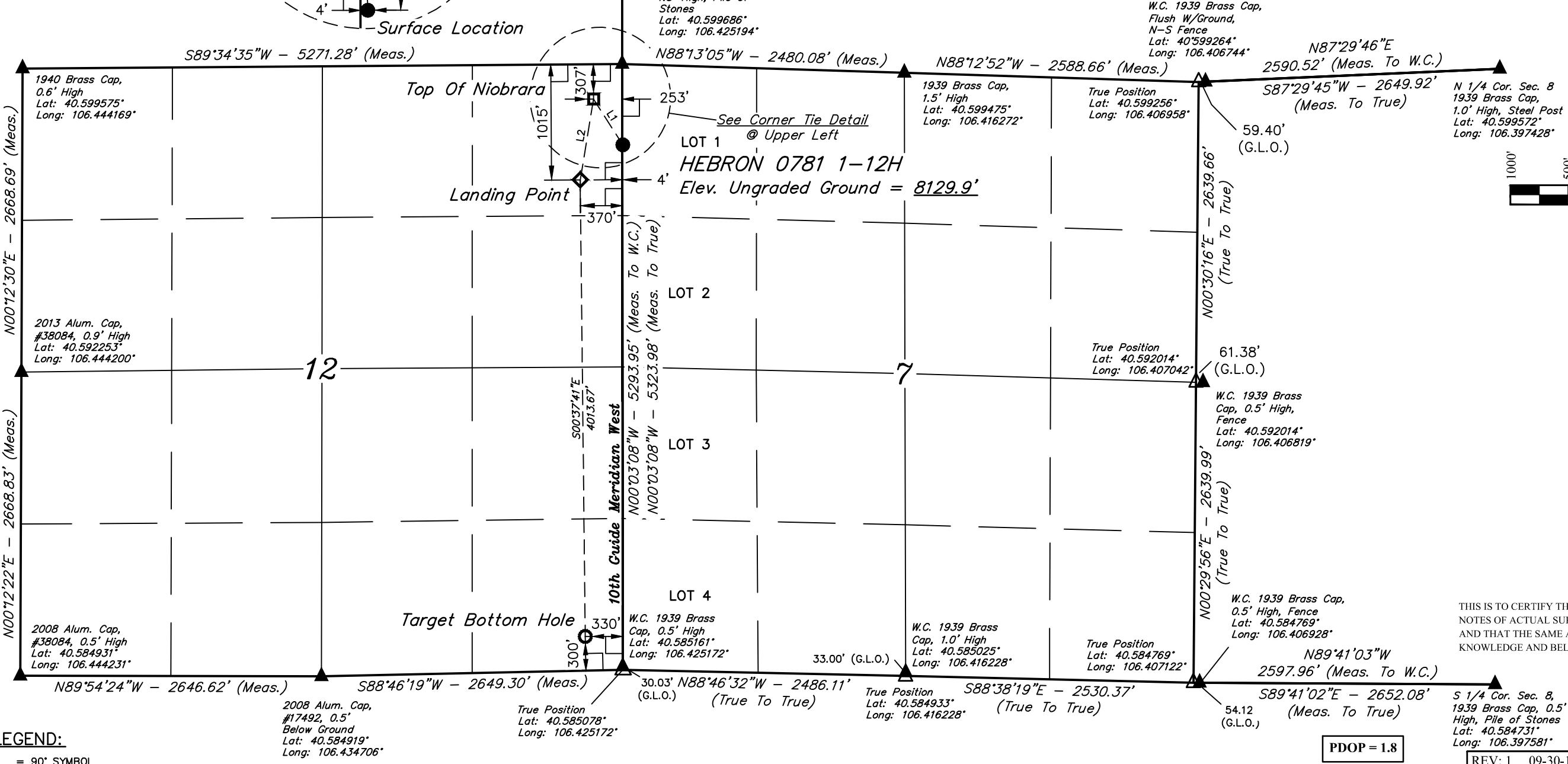
BASIS OF BEARINGS

BASIS OF ELEVATION

SPOT ELEVATION AT THE SOUTHEAST CORNER OF SECTION 29, T7N, R80W, 6th P.M., TAKEN FROM THE COALMONT QUADRANGLE, COLORADO, JACKSON COUNTY 7.5 MINUTE QUAD. (TOPOGRAPHIC MAP) PUBLISHED BY THE UNITED STATES DEPARTMENT OF THE INTERIOR, GEOLOGICAL SURVEY. SAID ELEVATION IS MARKED AS BEING 8156 FEET.



LINE TABLE		
LINE	DIRECTION	LENGTH
L1	N32°35'27\"W	477.13'
L2	S09°22'14\"W	718.59'



LEGEND:

- 90° SYMBOL
- PROPOSED WELLHEAD.
- TOP OF NIOBRARA.
- LANDING POINT.
- TARGET BOTTOM HOLE.
- SECTION CORNERS LOCATED. (NAD 83)
- SECTION CORNERS RE-ESTABLISHED. (Not Set on Ground.) (NAD 83)

NAD 83 (SURFACE LOCATION)	NAD 83 (TOP OF NIOBRARA)	NAD 83 (LANDING POINT)	NAD 83 (TARGET BOTTOM HOLE)
LATITUDE = 40°35'51.85" (40.597736)	LATITUDE = 40°35'55.82" (40.598839)	LATITUDE = 40°35'48.82" (40.596894)	LATITUDE = 40°35'09.18" (40.585883)
LONGITUDE = 106°25'30.64" (106.425178)	LONGITUDE = 106°25'33.97" (106.426103)	LONGITUDE = 106°25'35.49" (106.426525)	LONGITUDE = 106°25'34.90" (106.426361)
NAD 27 (SURFACE LOCATION)	NAD 27 (TOP OF NIOBRARA)	NAD 27 (LANDING POINT)	NAD 27 (TARGET BOTTOM HOLE)
LATITUDE = 40°35'51.93" (40.597758)	LATITUDE = 40°35'55.90" (40.598861)	LATITUDE = 40°35'48.89" (40.596914)	LATITUDE = 40°35'09.25" (40.585903)
LONGITUDE = 106°25'28.53" (106.424592)	LONGITUDE = 106°25'31.86" (106.425517)	LONGITUDE = 106°25'33.37" (106.425936)	LONGITUDE = 106°25'32.79" (106.425775)
STATE PLANE NAD 83 (CO. NORTH)	STATE PLANE NAD 83 (CO. NORTH)	STATE PLANE NAD 83 (CO. NORTH)	STATE PLANE NAD 83 (CO. NORTH)
N: 1461937.18 E: 2743084.61	N: 1462341.61 E: 2742831.82	N: 1461634.12 E: 2742707.66	N: 1457622.12 E: 2742710.84
STATE PLANE NAD 27 (CO. NORTH)	STATE PLANE NAD 27 (CO. NORTH)	STATE PLANE NAD 27 (CO. NORTH)	STATE PLANE NAD 27 (CO. NORTH)
N: 461935.05 E: 1743240.86	N: 462339.48 E: 1742988.07	N: 461631.99 E: 1742863.92	N: 457619.97 E: 1742867.13

PDOP = 1.8

CERTIFICATE
THIS IS TO CERTIFY THAT THE ABOVE PLAT WAS PREPARED FROM FIELD NOTES OF ACTUAL SURVEYS MADE BY ME OR UNDER MY SUPERVISION AND THAT THE SAME ARE TRUE AND CORRECT TO THE BEST OF MY KNOWLEDGE AND BELIEF.

REGISTERED LAND SURVEYOR
REGISTRATION NO. 28285
STATE OF COLORADO
JULY 16, 2016

S 1/4 Cor. Sec. 8,
1939 Brass Cap, 0.5'
High, Pile of Stones
Lat: 40.584731°
Long: 106.397581°

REV: 1 09-30-16 M.D. (ADD TOP OF NIOBRARA & LP)



UELS, LLC
Corporate Office * 85 South 200 East
Vernal, UT 84078 * (435) 789-1017

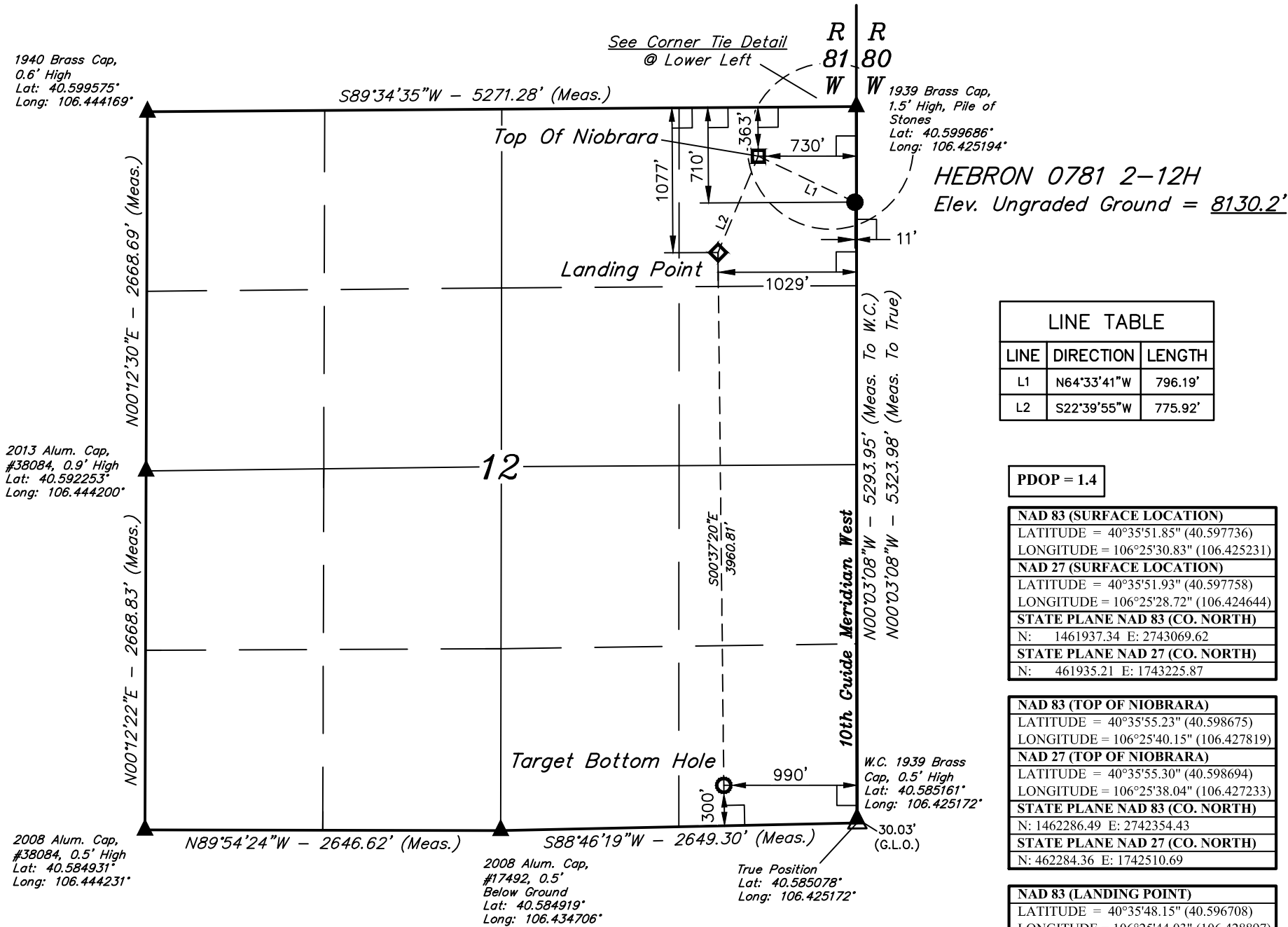
SURVEYED BY	CHAD MEIERS, D.S.	09-01-16	SCALE
DRAWN BY	T.B.	09-08-16	1" = 1000'

WELL LOCATION PLAT

LEGEND:

- └─ = 90° SYMBOL
- = PROPOSED WELLHEAD.
- = TOP OF NIOBRARA.
- ◇ = LANDING POINT.
- = TARGET BOTTOM HOLE.
- ▲ = SECTION CORNERS LOCATED. (NAD 83)
- △ = SECTION CORNERS RE-ESTABLISHED. (Not Set on Ground.) (NAD 83)

T7N, R81W, 6th P.M.



LINE TABLE		
LINE	DIRECTION	LENGTH
L1	N64°33'41"W	796.19'
L2	S22°39'55"W	775.92'

PDOP = 1.4

NAD 83 (SURFACE LOCATION)	
LATITUDE = 40°35'51.85" (40.597736)	
LONGITUDE = 106°25'30.83" (106.425231)	
NAD 27 (SURFACE LOCATION)	
LATITUDE = 40°35'51.93" (40.597758)	
LONGITUDE = 106°25'28.72" (106.424644)	
STATE PLANE NAD 83 (CO. NORTH)	
N: 1461937.34 E: 2743069.62	
STATE PLANE NAD 27 (CO. NORTH)	
N: 461935.21 E: 1743225.87	

NAD 83 (TOP OF NIOBRARA)	
LATITUDE = 40°35'55.23" (40.598675)	
LONGITUDE = 106°25'40.15" (106.427819)	
NAD 27 (TOP OF NIOBRARA)	
LATITUDE = 40°35'55.30" (40.598694)	
LONGITUDE = 106°25'38.04" (106.427233)	
STATE PLANE NAD 83 (CO. NORTH)	
N: 1462286.49 E: 2742354.43	
STATE PLANE NAD 27 (CO. NORTH)	
N: 462284.36 E: 1742510.69	

NAD 83 (LANDING POINT)	
LATITUDE = 40°35'48.15" (40.596708)	
LONGITUDE = 106°25'44.03" (106.428897)	
NAD 27 (LANDING POINT)	
LATITUDE = 40°35'48.23" (40.596731)	
LONGITUDE = 106°25'41.91" (106.428308)	
STATE PLANE NAD 83 (CO. NORTH)	
N: 1461573.86 E: 2742048.29	
STATE PLANE NAD 27 (CO. NORTH)	
N: 461571.72 E: 1742204.56	

NAD 83 (TARGET BOTTOM HOLE)	
LATITUDE = 40°35'09.03" (40.585842)	
LONGITUDE = 106°25'43.45" (106.428736)	
NAD 27 (TARGET BOTTOM HOLE)	
LATITUDE = 40°35'09.11" (40.585864)	
LONGITUDE = 106°25'41.34" (106.428150)	
STATE PLANE NAD 83 (CO. NORTH)	
N: 1457614.69 E: 2742051.01	
STATE PLANE NAD 27 (CO. NORTH)	
N: 457612.54 E: 1742207.31	

CERTIFICATE

THIS IS TO CERTIFY THAT THE ABOVE PLAT WAS PREPARED FROM FIELD NOTES OF ACTUAL SURVEYS MADE BY ME OR UNDER MY SUPERVISION, AND THAT THE SAME ARE TRUE AND CORRECT TO THE BEST OF MY KNOWLEDGE AND BELIEF.

REGISTERED LAND SURVEYOR
REGISTRATION NO. 28285
STATE OF COLORADO
09-30-16

REV: 1 09-30-16 M.D. (ADD TOP OF NIOBRARA & LP)

BASIS OF BEARINGS
BASIS OF BEARINGS IS A G.P.S. OBSERVATION

BASIS OF ELEVATION
SPOT ELEVATION AT THE SOUTHEAST CORNER OF SECTION 29, T7N, R80W, 6th P.M., TAKEN FROM THE COALMONT QUADRANGLE, COLORADO, JACKSON COUNTY 7.5 MINUTE QUAD. (TOPOGRAPHIC MAP) PUBLISHED BY THE UNITED STATES DEPARTMENT OF THE INTERIOR, GEOLOGICAL SURVEY. SAID ELEVATION IS MARKED AS BEING 8156 FEET.



UELS, LLC
Corporate Office * 85 South 200 East
Vernal, UT 84078 * (435) 789-1017



SandRidge Exploration & Production, LLC

HEBRON 0781 2-12H
NE 1/4 NE 1/4, SECTION 12, T7N, R81W, 6th P.M.
JACKSON COUNTY, COLORADO

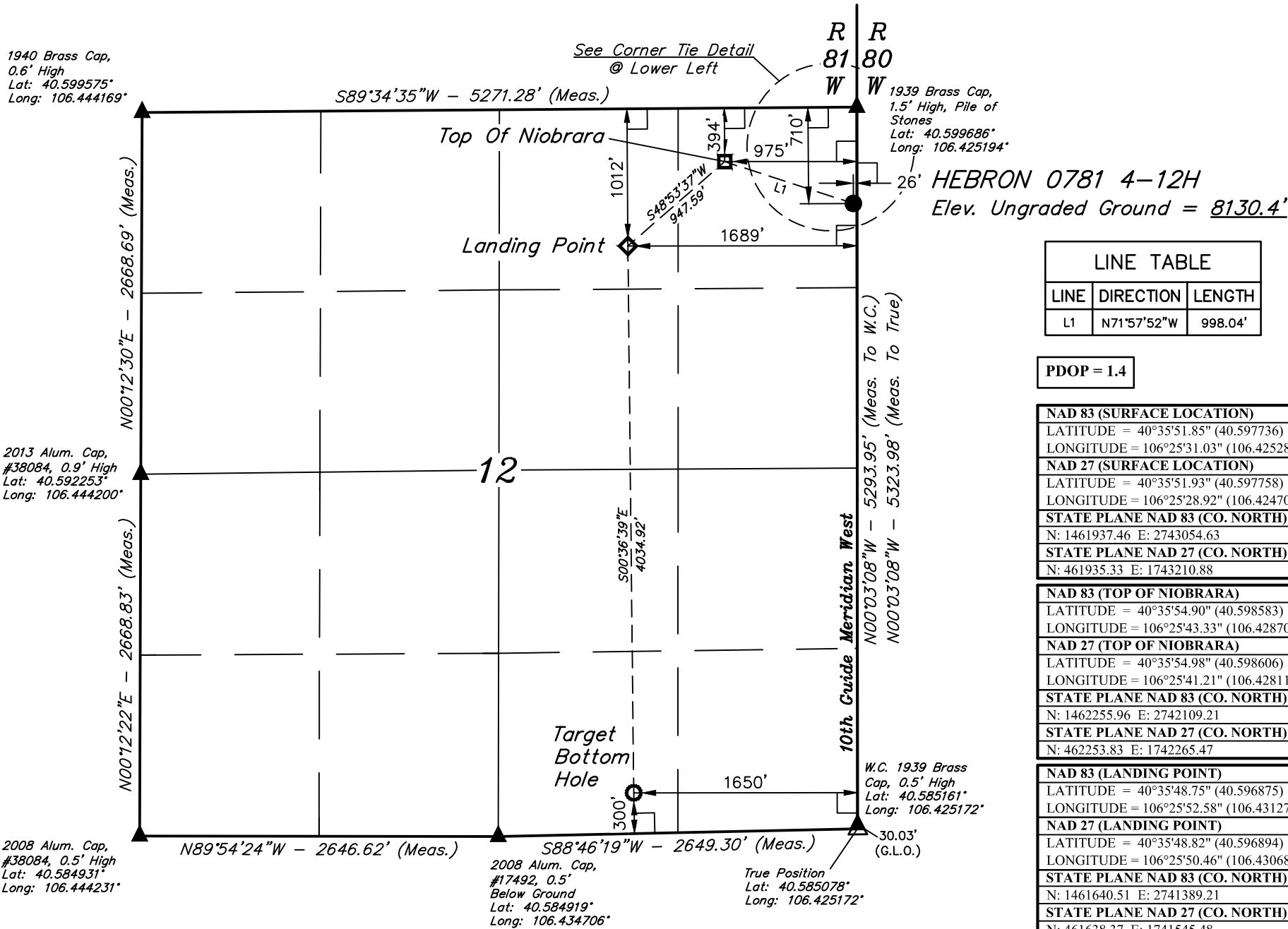
SURVEYED BY	CHAD MEIERS, D.S.	09-01-16	SCALE
DRAWN BY	T.B.	09-08-16	1" = 1000'

WELL LOCATION PLAT

LEGEND:

- = 90° SYMBOL
- = PROPOSED WELLHEAD.
- = TOP OF NIOBRARA.
- = LANDING POINT.
- = TARGET BOTTOM HOLE.
- = SECTION CORNERS LOCATED. (NAD 83)
- = SECTION CORNERS RE-ESTABLISHED. (Not Set on Ground.) (NAD 83)

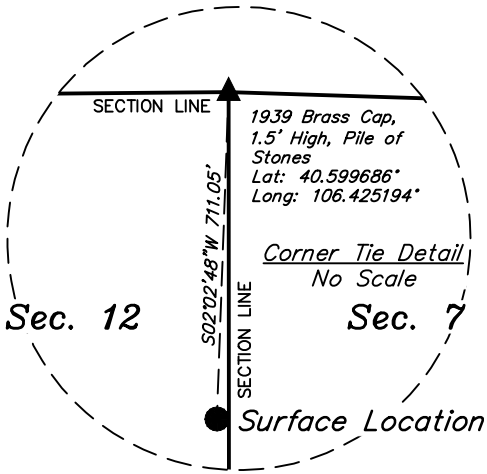
T7N, R81W, 6th P.M.



LINE TABLE		
LINE	DIRECTION	LENGTH
L1	N71°57'52"W	998.04'

PDOP = 1.4

NAD 83 (SURFACE LOCATION)	
LATITUDE = 40°35'51.85" (40.597736)	LONGITUDE = 106°25'31.03" (106.425286)
NAD 27 (SURFACE LOCATION)	
LATITUDE = 40°35'51.93" (40.597758)	LONGITUDE = 106°25'28.92" (106.424700)
STATE PLANE NAD 83 (CO. NORTH)	
N: 1461937.46 E: 2743054.63	
STATE PLANE NAD 27 (CO. NORTH)	
N: 461935.33 E: 1743210.88	
NAD 83 (TOP OF NIOBRARA)	
LATITUDE = 40°35'54.90" (40.598583)	LONGITUDE = 106°25'43.33" (106.428703)
NAD 27 (TOP OF NIOBRARA)	
LATITUDE = 40°35'54.98" (40.598606)	LONGITUDE = 106°25'41.21" (106.428114)
STATE PLANE NAD 83 (CO. NORTH)	
N: 1462255.96 E: 2742109.21	
STATE PLANE NAD 27 (CO. NORTH)	
N: 462253.83 E: 1742265.47	
NAD 83 (LANDING POINT)	
LATITUDE = 40°35'48.75" (40.596875)	LONGITUDE = 106°25'52.58" (106.431272)
NAD 27 (LANDING POINT)	
LATITUDE = 40°35'48.82" (40.596894)	LONGITUDE = 106°25'50.46" (106.430683)
STATE PLANE NAD 83 (CO. NORTH)	
N: 1461640.51 E: 2741389.21	
STATE PLANE NAD 27 (CO. NORTH)	
N: 461638.37 E: 1741545.48	
NAD 83 (TARGET BOTTOM HOLE)	
LATITUDE = 40°35'08.89" (40.585803)	LONGITUDE = 106°25'52.00" (106.431111)
NAD 27 (TARGET BOTTOM HOLE)	
LATITUDE = 40°35'08.97" (40.585825)	LONGITUDE = 106°25'49.89" (106.430525)
STATE PLANE NAD 83 (CO. NORTH)	
N: 1457607.26 E: 2741391.19	
STATE PLANE NAD 27 (CO. NORTH)	
N: 457605.10 E: 1741547.49	



BASIS OF BEARINGS
BASIS OF BEARINGS IS A G.P.S. OBSERVATION

BASIS OF ELEVATION

SPOT ELEVATION AT THE SOUTHEAST CORNER OF SECTION 29, T7N, R80W, 6th P.M., TAKEN FROM THE COALMONT QUADRANGLE, COLORADO, JACKSON COUNTY 7.5 MINUTE QUAD. (TOPOGRAPHIC MAP) PUBLISHED BY THE UNITED STATES DEPARTMENT OF THE INTERIOR, GEOLOGICAL SURVEY. SAID ELEVATION IS MARKED AS BEING 8156 FEET.



UELS, LLC
Corporate Office * 85 South 200 East
Vernal, UT 84078 * (435) 789-1017



CERTIFICATE
THIS IS TO CERTIFY THAT THE ABOVE MAP WAS PREPARED FROM FIELD NOTES OF ACTUAL SURVEYS MADE BY ME OR UNDER MY SUPERVISION, AND THAT THE SAME ARE TRUE AND ACCURATE TO THE BEST OF MY KNOWLEDGE AND BELIEF.



REV: 1 09-30-16 M.D. (ADD TOP OF NIOBRARA & LP)

SandRidge Exploration & Production, LLC

HEBRON 0781 4-12H
NE 1/4 NE 1/4, SECTION 12, T7N, R81W, 6th P.M.
JACKSON COUNTY, COLORADO

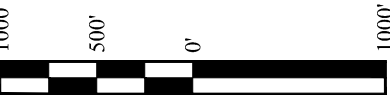
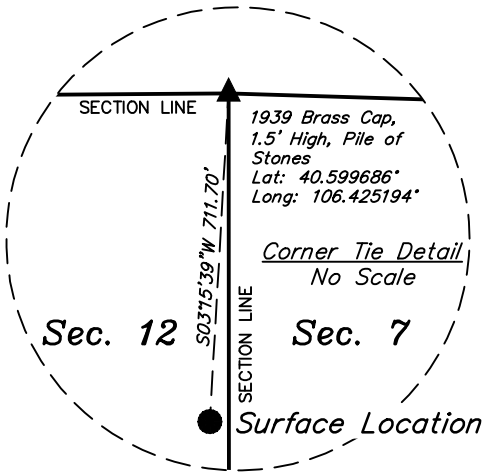
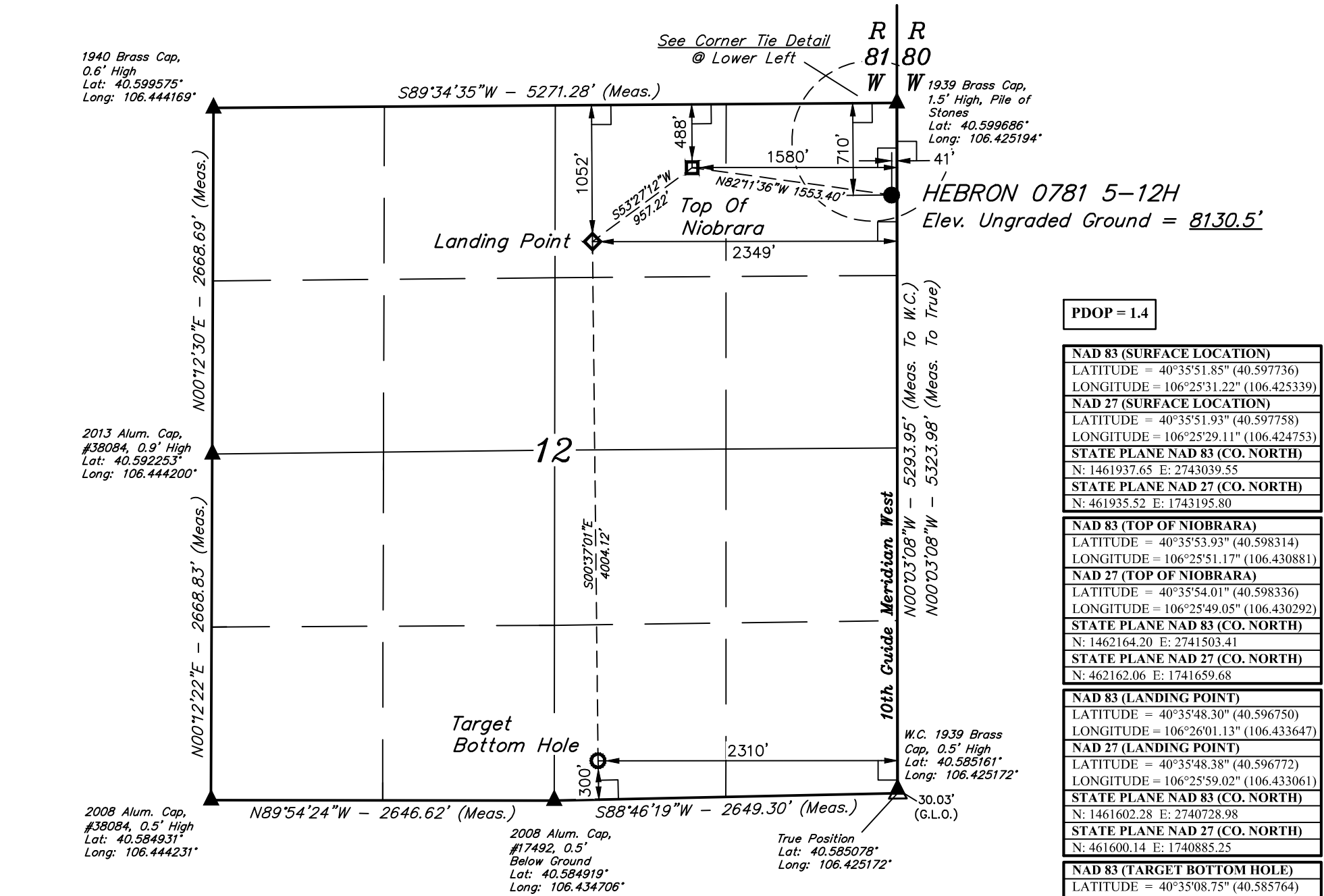
SURVEYED BY	CHAD MEIERS, D.S.	09-01-16	SCALE
DRAWN BY	T.B.	09-08-16	1" = 1000'

WELL LOCATION PLAT

LEGEND:

- = 90° SYMBOL
- = PROPOSED WELLHEAD.
- = TOP OF NIOBRARA.
- = LANDING POINT.
- = TARGET BOTTOM HOLE.
- = SECTION CORNERS LOCATED. (NAD 83)
- = SECTION CORNERS RE-ESTABLISHED. (Not Set on Ground.) (NAD 83)

T7N, R81W, 6th P.M.



BASIS OF BEARINGS
BASIS OF BEARINGS IS A G.P.S. OBSERVATION

BASIS OF ELEVATION

SPOT ELEVATION AT THE SOUTHEAST CORNER OF SECTION 29, T7N, R80W, 6th P.M., TAKEN FROM THE COALMONT QUADRANGLE, COLORADO, JACKSON COUNTY 7.5 MINUTE QUAD. (TOPOGRAPHIC MAP) PUBLISHED BY THE UNITED STATES DEPARTMENT OF THE INTERIOR, GEOLOGICAL SURVEY. SAID ELEVATION IS MARKED AS BEING 8156 FEET.



UELS, LLC
Corporate Office * 85 South 200 East
Vernal, UT 84078 * (435) 789-1017



SandRidge Exploration & Production, LLC

HEBRON 0781 5-12H
NE 1/4 NE 1/4, SECTION 12, T7N, R81W, 6th P.M.
JACKSON COUNTY, COLORADO

SURVEYED BY	CHAD MEIERS, D.S.	09-01-16	SCALE
DRAWN BY	T.B.	09-08-16	1" = 1000'

WELL LOCATION PLAT

CERTIFICATE
THIS IS TO CERTIFY THAT THE ABOVE PLAT WAS PREPARED FROM FIELD NOTES OF ACTUAL SURVEYS MADE BY ME OR UNDER MY SUPERVISION, AND THAT THE SAME ARE TRUE AND ACCURATE TO THE BEST OF MY KNOWLEDGE AND BELIEF.

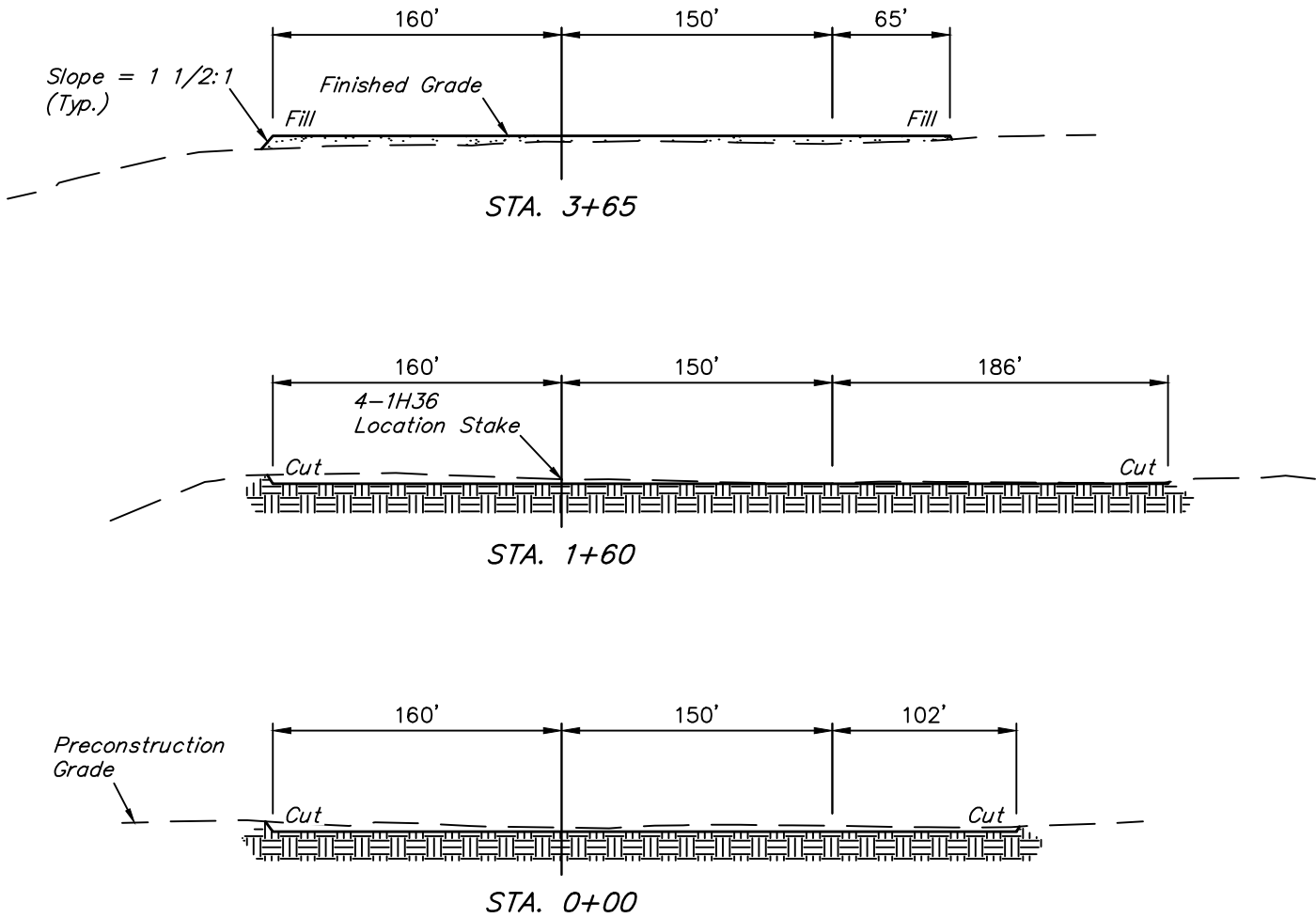
REGISTERED LAND SURVEYOR
REGISTRATION NO. 28285
STATE OF COLORADO
09-30-16

REV: 1 09-30-16 M.D. (ADD TOP OF NIOBRARA & LP)

**CONSTRUCTION LAYOUT** **FIGURE #1**

1" = 40'
X-Section
Scale
1" = 100'

PRELIMINARY



APPROXIMATE EARTHWORK QUANTITIES	
(6") TOPSOIL STRIPPING	3,420 Cu. Yds.
REMAINING LOCATION	2,780 Cu. Yds.
TOTAL CUT	6,200 Cu. Yds.
FILL	2,780 Cu. Yds.
EXCESS MATERIAL	3,420 Cu. Yds.
TOPSOIL	3,420 Cu. Yds.
EXCESS UNBALANCE (After Interim Rehabilitation)	0 Cu. Yds.

APPROXIMATE SURFACE DISTURBANCE AREAS		
	DISTANCE	ACRES
WELL SITE DISTURBANCE (FENCED AREA)	NA	±4.756
TOPSOIL PILE DISTURBANCE	NA	±0.217
30' WIDE ROAD RE-ROUTE R-O-W DISTURBANCE	±441'	±0.304
TOTAL SURFACE USE AREA		±5.277

- NOTES:
- Fill quantity includes 5% for compaction.
 - Calculations based on 6" of topsoil stripping.
 - Cut/Fill slopes 1 1/2:1 (Typ. except where noted).

SandRidge Exploration & Production, LLC

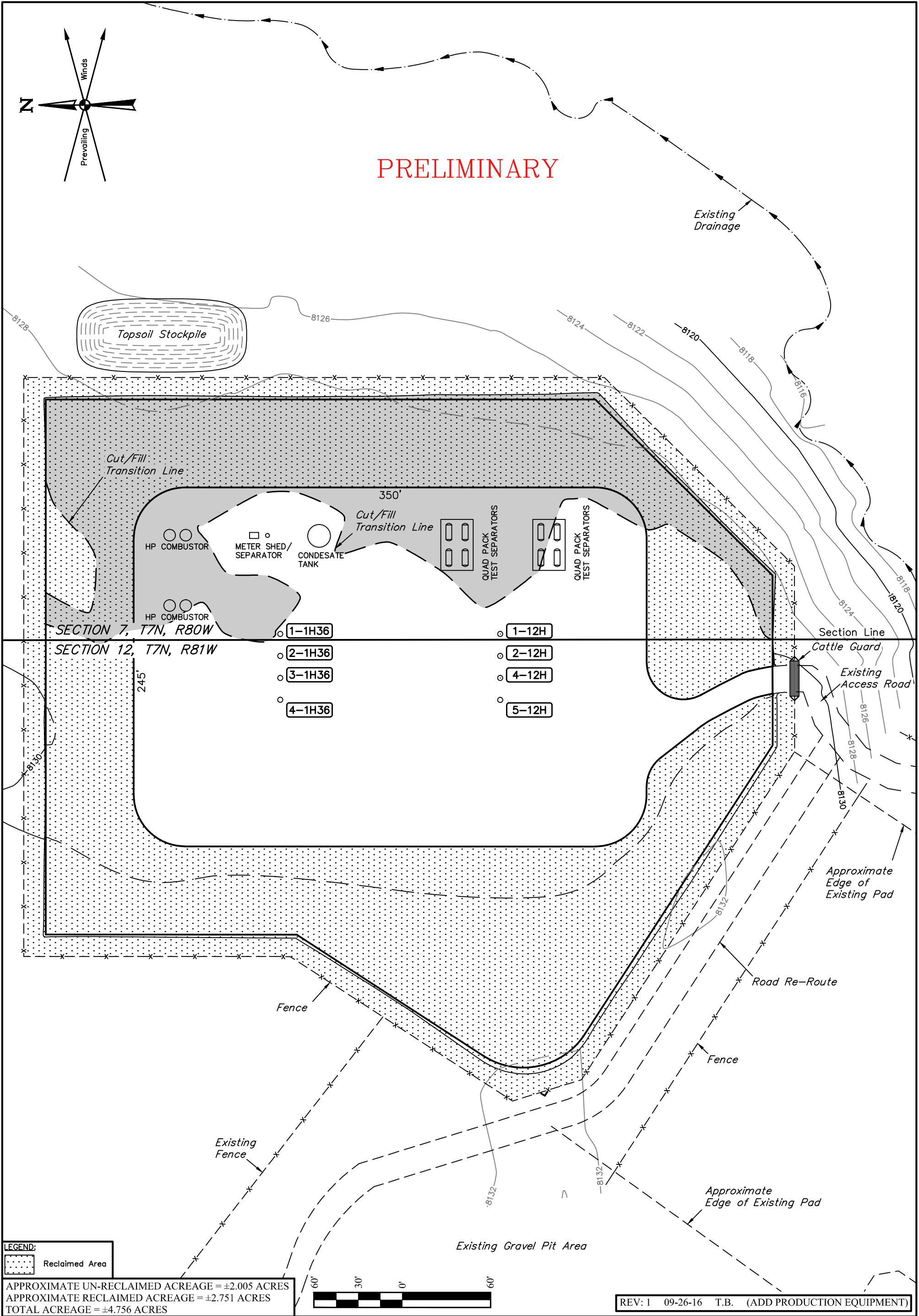
HEBRON 12 ANNEX PAD
NE 1/4 NE 1/4, SECTION 12, T7N, R81W, 6th P.M. &
NW 1/4 NW 1/4, SECTION 7, T7N, R80W, 6th P.M.
JACKSON COUNTY, COLORADO

SURVEYED BY	CHAD MEIERS, D.S.	09-01-16	SCALE
DRAWN BY	T.B.	09-08-16	AS SHOWN
CONSTRUCTION LAYOUT CROSS SECTIONS			FIGURE #2



UELS, LLC
Corporate Office * 85 South 200 East
Vernal, UT 84078 * (435) 789-1017





NOTES:

- Contours shown at 2' intervals.

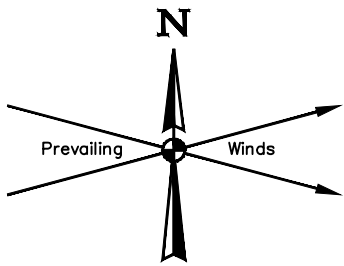
SandRidge Exploration & Production, LLC

HEBRON 12 ANNEX PAD
NE 1/4 NE 1/4, SECTION 12, T7N, R81W, 6th P.M. &
NW 1/4 NW 1/4, SECTION 7, T7N, R80W, 6th P.M.
JACKSON COUNTY, COLORADO

SURVEYED BY	CHAD MEIERS, D.S.	09-01-16	SCALE
DRAWN BY	T.B.	09-08-16	1" = 60'
INTERIM RECLAMATION PLAN			FIGURE #4



UELS, LLC
Corporate Office * 85 South 200 East
Vernal, UT 84078 * (435) 789-1017



SECTION 1, T7N, R81W

SECTION 6, T7N, R80W

Section Line

PROPOSED #GRIZZLY 4-1H36
(NAD 83)
Lat: 40.598147°
Long: 106.425339°

Proposed Fence

Existing Fence

Proposed Road
Re-Route

Approximate
Edge of Existing Pad

Proposed Fence

Install Cattle Guard

Topsoil
Stockpile

Existing
Drainage

500' Offset
from Edge of
Disturbance

SECTION 12, T7N, R81W
SECTION 7, T7N, R80W

LINE TABLE		
LINE	DIRECTION	LENGTH
L1	N55°50'03"W	70.45'
L2	S73°22'16"W	311.15'
L3	S34°08'48"E	247.65'
L4	S30°28'33"E	69.50'



UELS, LLC
Corporate Office * 85 South 200 East
Vernal, UT 84078 * (435) 789-1017

SandRidge Exploration & Production, LLC

HEBRON 12 ANNEX PAD
NE 1/4 NE 1/4, SECTION 12, T7N, R81W, 6th P.M. &
NW 1/4 NW 1/4, SECTION 7, T7N, R80W, 6th P.M.
JACKSON COUNTY, COLORADO

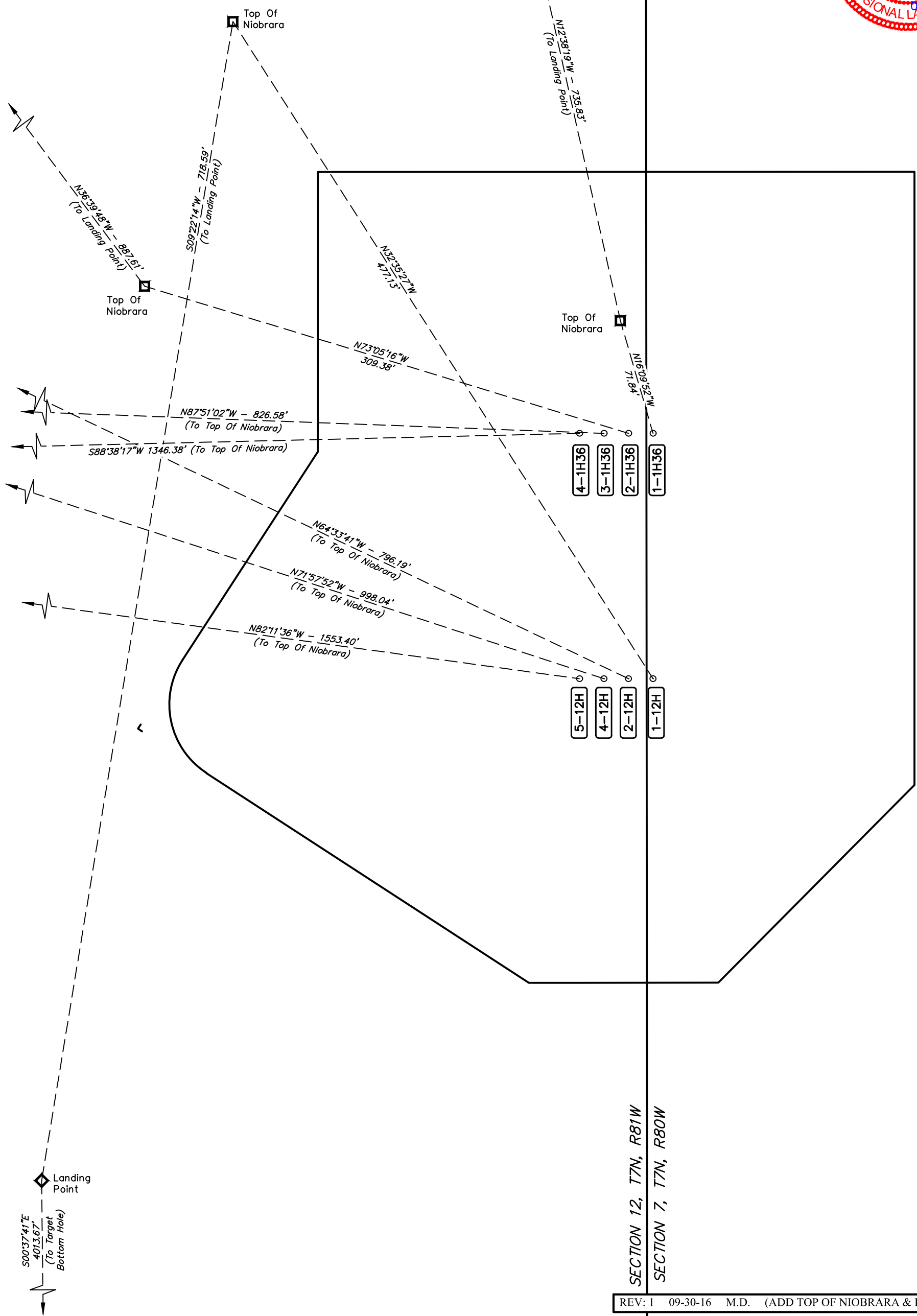
SURVEYED BY	CHAD MEIERS, D.S.	09-01-16	SCALE
DRAWN BY	T.B.	09-08-16	1" = 200'
LOCATION DRAWING		FIGURE #5	

SandRidge Exploration & Production, LLC
HEBRON 12 ANNEX PAD
SECTION 12, T7N, R81W, 6th P.M. & SECTION 7, T7N, R80W, 6th P.M.
JACKSON COUNTY, COLORADO
DATE: 09-08-16 T.B.
REVISED: 11-02-16 M.D. (UPDATE DISTANCES)

DISTANCES FROM WELLHEAD																
WELL NAME	BUILDING		BUILDING UNIT		HIGH OCCU. BUILDING		D.O.A.A.		PUBLIC ROAD		ABOVE GROUND UTILITY		RAILROAD		PROPERTY LINE	
	DIRECTION	LENGTH	DIRECTION	LENGTH	DIRECTION	LENGTH	DIRECTION	LENGTH	DIRECTION	LENGTH	DIRECTION	LENGTH	DIRECTION	LENGTH	DIRECTION	LENGTH
GRIZZLY 1-1H36	N50°E	1729'	N25°W	835'	OVER 1 MILE		OVER 1 MILE		S32°E	2995'	S86°E	4993'	OVER 1 MILE		SOUTH	763'
GRIZZLY 2-1H36	N50°E	1741'	N24°W	829'	OVER 1 MILE		OVER 1 MILE		S32°E	3003'	S86°E	5008'	OVER 1 MILE		S01°E	763'
GRIZZLY 3-1H36	N50°E	1752'	N23°W	823'	OVER 1 MILE		OVER 1 MILE		S32°E	3011'	S86°E	5023'	OVER 1 MILE		S02°E	763'
GRIZZLY 4-1H36	N50°E	1764'	N22°W	817'	OVER 1 MILE		OVER 1 MILE		S32°E	3019'	S86°E	5038'	OVER 1 MILE		S03°E	764'
HEBRON 1-12H	N46°E	1830'	N21°W	973'	OVER 1 MILE		OVER 1 MILE		S32°E	2868'	S88°E	4985'	OVER 1 MILE		SOUTH	613'
HEBRON 2-12H	N46°E	1841'	N21°W	968'	OVER 1 MILE		OVER 1 MILE		S32°E	2876'	S88°E	5000'	OVER 1 MILE		S01°E	613'
HEBRON 4-12H	N47°E	1852'	N20°W	963'	OVER 1 MILE		OVER 1 MILE		S32°E	2884'	S88°E	5015'	OVER 1 MILE		S02°E	614'
HEBRON 5-12H	N47°E	1863'	N19°W	958'	OVER 1 MILE		OVER 1 MILE		S32°E	2892'	S88°E	5030'	OVER 1 MILE		S04°E	614'

DISTANCES FROM PRODUCTION AREA																
PRODUCTION FEATURE	BUILDING		BUILDING UNIT		HIGH OCCU. BUILDING		D.O.A.A.		PUBLIC ROAD		ABOVE GROUND UTILITY		RAILROAD		PROPERTY LINE	
	DIRECTION	LENGTH	DIRECTION	LENGTH	DIRECTION	LENGTH	DIRECTION	LENGTH	DIRECTION	LENGTH	DIRECTION	LENGTH	DIRECTION	LENGTH	DIRECTION	LENGTH
PRODUCTION AREA	N50°E	1603'	N21°W	700'	OVER 1 MILE		OVER 1 MILE		S32°E	2749'	S89°E	4884'	OVER 1 MILE		SOUTH	513'

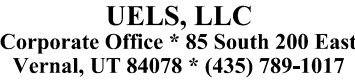




REV: 1 09-30-16 M.D. (ADD TOP OF NIOBRARA & LANDING POINT)

HEBRON 12 ANNEX PAD
NE 1/4 NE 1/4, SECTION 12, T7N, R81W, 6th P.M. &
NW 1/4 NW 1/4, SECTION 7, T7N, R80W, 6th P.M.
JACKSON COUNTY, COLORADO

SURVEYED BY	CHAD MEIERS, D.S.	09-01-16	SCALE
DRAWN BY	T.B.	09-08-16	1" = 60'
MULTI-WELL PLAN		FIGURE #6	



PROCEED IN A SOUTHERLY DIRECTION FROM WALDEN, COLORADO ALONG COLORADO HIGHWAY 125 APPROXIMATELY 1.3 MILES TO THE JUNCTION OF THIS ROAD AND STATE HIGHWAY 14 TO THE SOUTHWEST; TURN RIGHT AND PROCEED IN A SOUTHWESTERLY, THEN SOUTHERLY DIRECTION APPROXIMATELY 11.6 MILES TO THE JUNCTION OF THIS ROAD AND COUNTY ROAD 24 TO THE SOUTHWEST; TURN RIGHT AND PROCEED IN A SOUTHWESTERLY DIRECTION APPROXIMATELY 1.1 MILES TO THE JUNCTION OF THIS ROAD AND AN EXISTING ROAD TO THE NORTH; TURN RIGHT AND PROCEED IN A NORTHERLY DIRECTION APPROXIMATELY 3,051' TO THE PROPOSED LOCATION.

TOTAL DISTANCE FROM WALDON, COLORADO TO THE PROPOSED WELL LOCATION IS APPROXIMATELY 14.6 MILES.

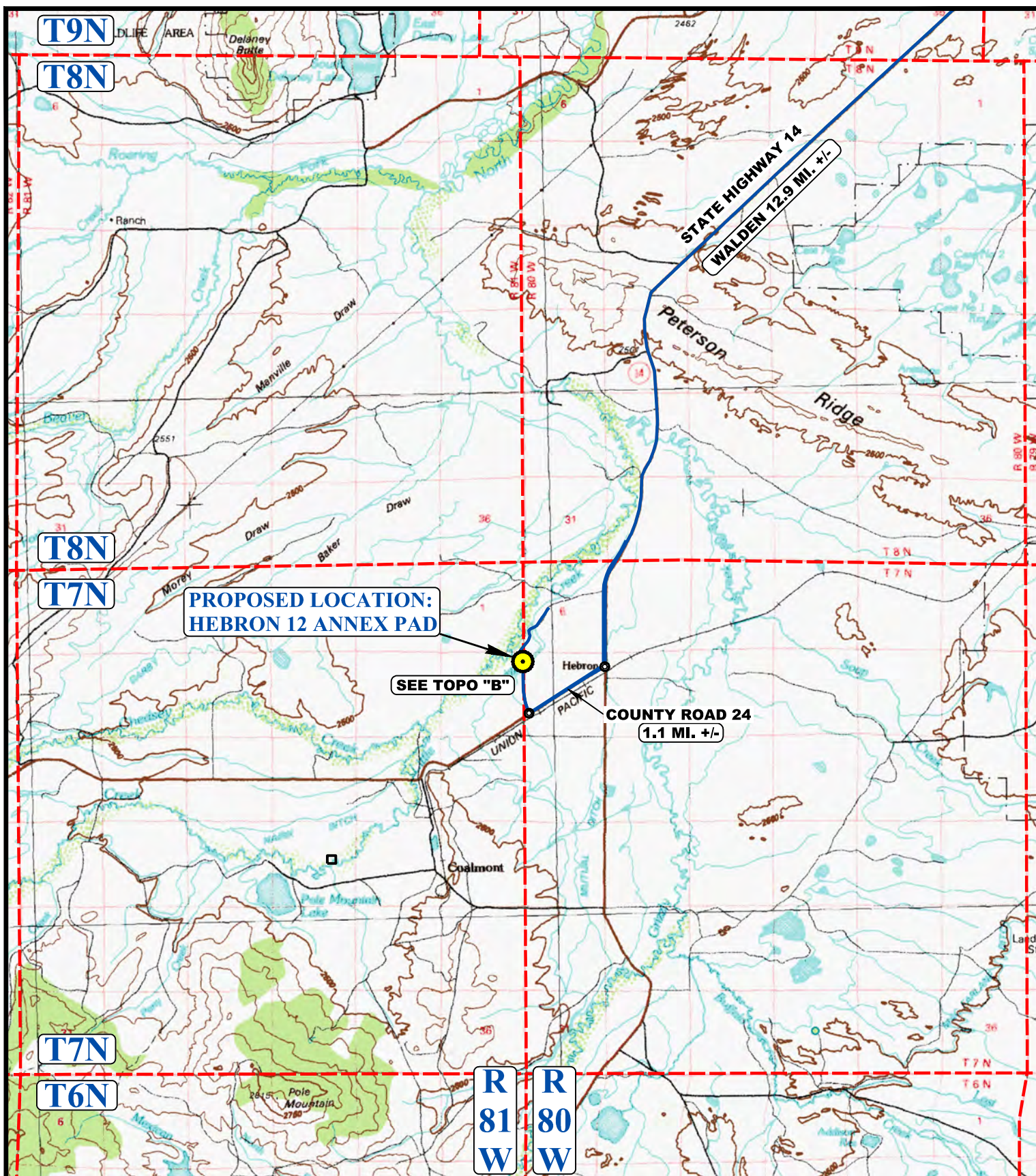
SandRidge Exploration & Production, LLC

HEBRON 12 ANNEX PAD
NE 1/4 NE 1/4, SECTION 12, T7N, R81W, 6th P.M. &
NW 1/4 NW 1/4, SECTION 7, T7N, R80W, 6th P.M.
JACKSON COUNTY, COLORADO

SURVEYED BY	C.M., D.S.	09-01-16	
DRAWN BY	C.D.L.	09-20-16	
ROAD DESCRIPTION			



UELS, LLC
Corporate Office * 85 South 200 East
Vernal, UT 84078 * (435) 789-1017



LEGEND:

 **PROPOSED LOCATION**



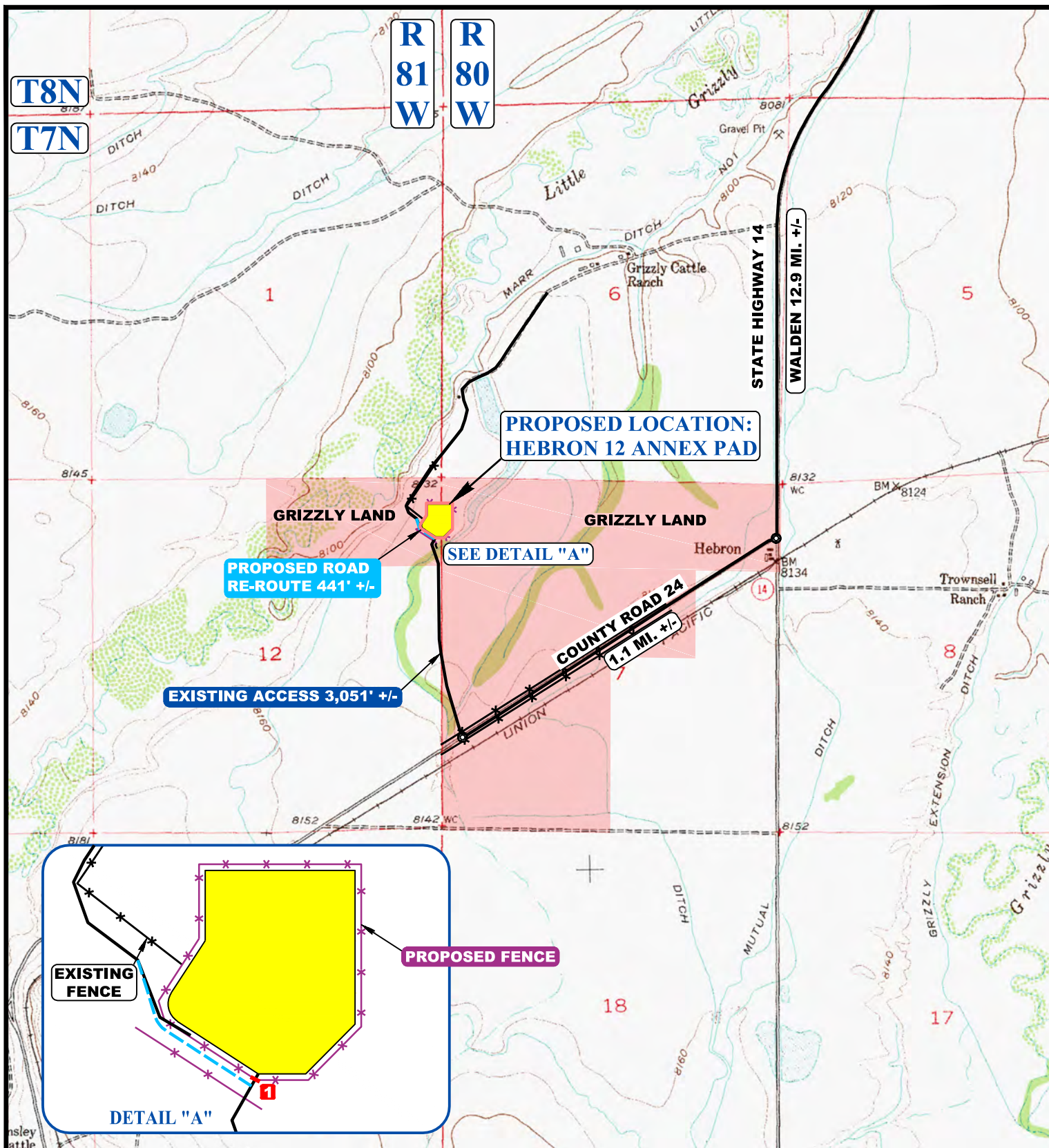
UELS, LLC
Corporate Office * 85 South 200 East
Vernal, UT 84078 * (435) 789-1017



SandRidge Exploration & Production, LLC

HEBRON 12 ANNEX PAD
NE 1/4 NE 1/4, SECTION 12, T7N, R81W, 6th P.M. &
NW 1/4 NW 1/4, SECTION 7, T7N, R80W, 6th P.M.
JACKSON COUNTY, COLORADO

SURVEYED BY	C.M., D.S.	09-01-16	SCALE
DRAWN BY	C.D.L.	09-20-16	1 : 100,000
ACCESS ROAD MAP			TOPO A



NOTE: PARCEL DATA SHOWN HAS BEEN OBTAINED FROM VARIOUS SOURCES AND SHOULD BE USED FOR MAPPING, GRAPHIC AND PLANNING PURPOSES ONLY. NO WARRANTY IS MADE BY UINTAH ENGINEERING AND LAND SURVEYING (UELS) FOR ACCURACY OF THE PARCEL DATA.

LEGEND:

- EXISTING ROAD
- PROPOSED ROAD RE-ROUTE
- EXISTING FENCE
- PROPOSED FENCE
- INSTALL CATTLE GUARD



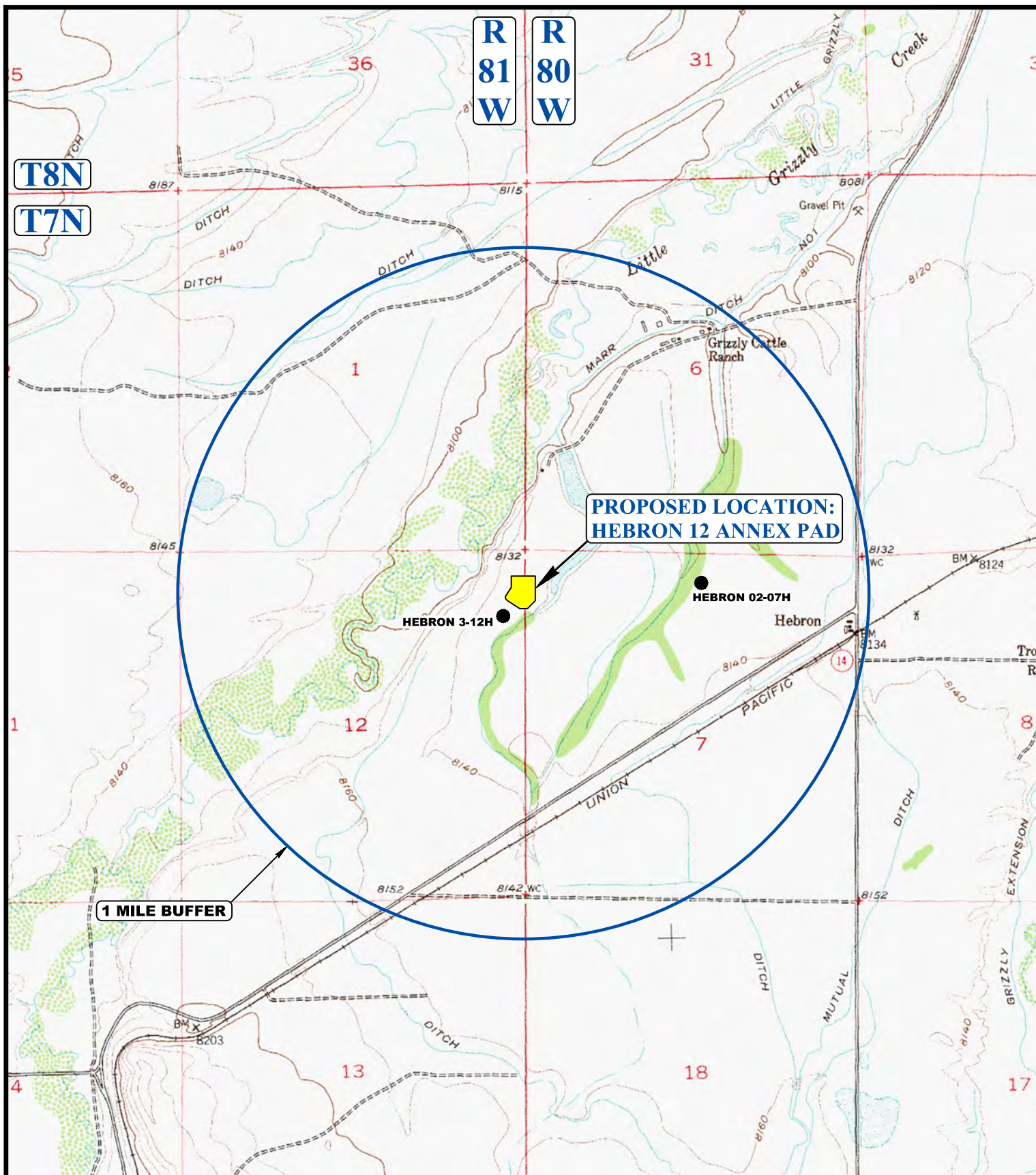
UELS, LLC
Corporate Office * 85 South 200 East
Vernal, UT 84078 * (435) 789-1017



SandRidge Exploration & Production, LLC

HEBRON 12 ANNEX PAD
NE 1/4 NE 1/4, SECTION 12, T7N, R81W, 6th P.M. &
NW 1/4 NW 1/4, SECTION 7, T7N, R80W, 6th P.M.
JACKSON COUNTY, COLORADO

SURVEYED BY	C.M., D.S.	09-01-16	SCALE
DRAWN BY	C.D.L.	09-20-16	1 : 24,000
ACCESS ROAD MAP			TOPO B



LEGEND:

- DISPOSAL WELLS
- PRODUCING WELLS
- SHUT IN WELLS
- ABANDONED WELLS
- TEMPORARILY ABANDONED
- CONFIDENTIAL



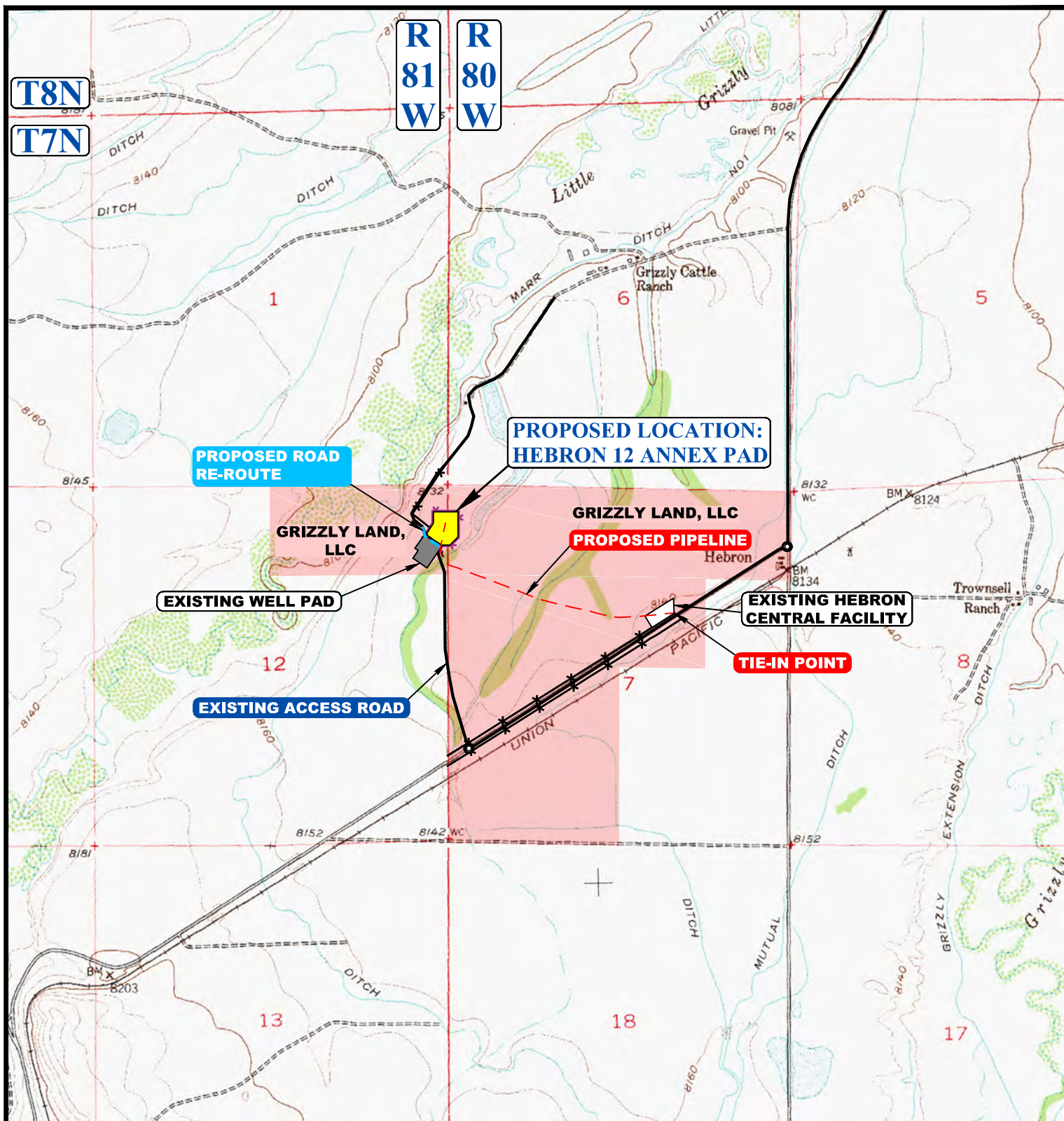
UELS, LLC
Corporate Office * 85 South 200 East
Vernal, UT 84078 * (435) 789-1017



SandRidge Exploration & Production, LLC

HEBRON 12 ANNEX PAD
NE 1/4 NE 1/4, SECTION 12, T7N, R81W, 6th P.M. &
NW 1/4 NW 1/4, SECTION 7, T7N, R80W, 6th P.M.
JACKSON COUNTY, COLORADO

SURVEYED BY	C.M., D.S.	09-01-16	SCALE
DRAWN BY	C.D.L.	09-20-16	1 : 24,000
WELL PROXIMITY MAP			TOPO C



APPROXIMATE TOTAL PIPELINE DISTANCE = 4162' +/-

NOTE: PARCEL DATA SHOWN HAS BEEN OBTAINED FROM VARIOUS SOURCES AND SHOULD BE USED FOR MAPPING, GRAPHIC AND PLANNING PURPOSES ONLY. NO WARRANTY IS MADE BY UINTAH ENGINEERING AND LAND SURVEYING (UELS) FOR ACCURACY OF THE PARCEL DATA.

LEGEND:

- EXISTING ROAD
- PROPOSED ROAD
- PROPOSED PIPELINE



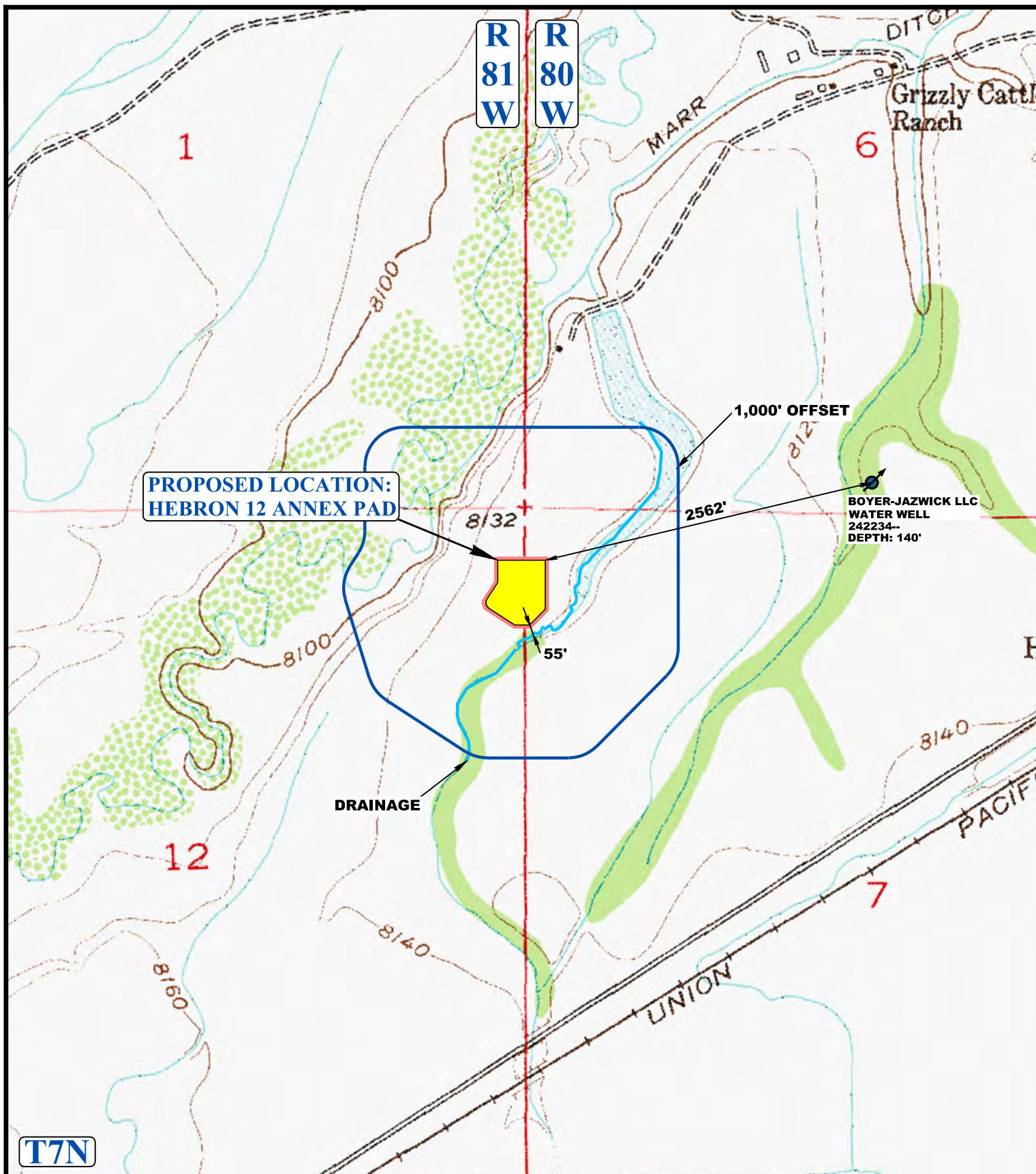
UELS, LLC
Corporate Office * 85 South 200 East
Vernal, UT 84078 * (435) 789-1017



SandRidge Exploration & Production, LLC

HEBRON 12 ANNEX PAD
NE 1/4 NE 1/4, SECTION 12, T7N, R81W, 6th P.M. &
NW 1/4 NW 1/4, SECTION 7, T7N, R80W, 6th P.M.
JACKSON COUNTY, COLORADO

SURVEYED BY	J.C.	10-07-16	SCALE
DRAWN BY	C.D.L.	10-17-16	1 : 24,000
PIPELINE MAP		TOPO D	



LEGEND:

- EXISTING DRAINAGE
- 1000' OFFSET BOUNDARY
- EDGE OF DISTURBANCE
- FLOOD PLAINS



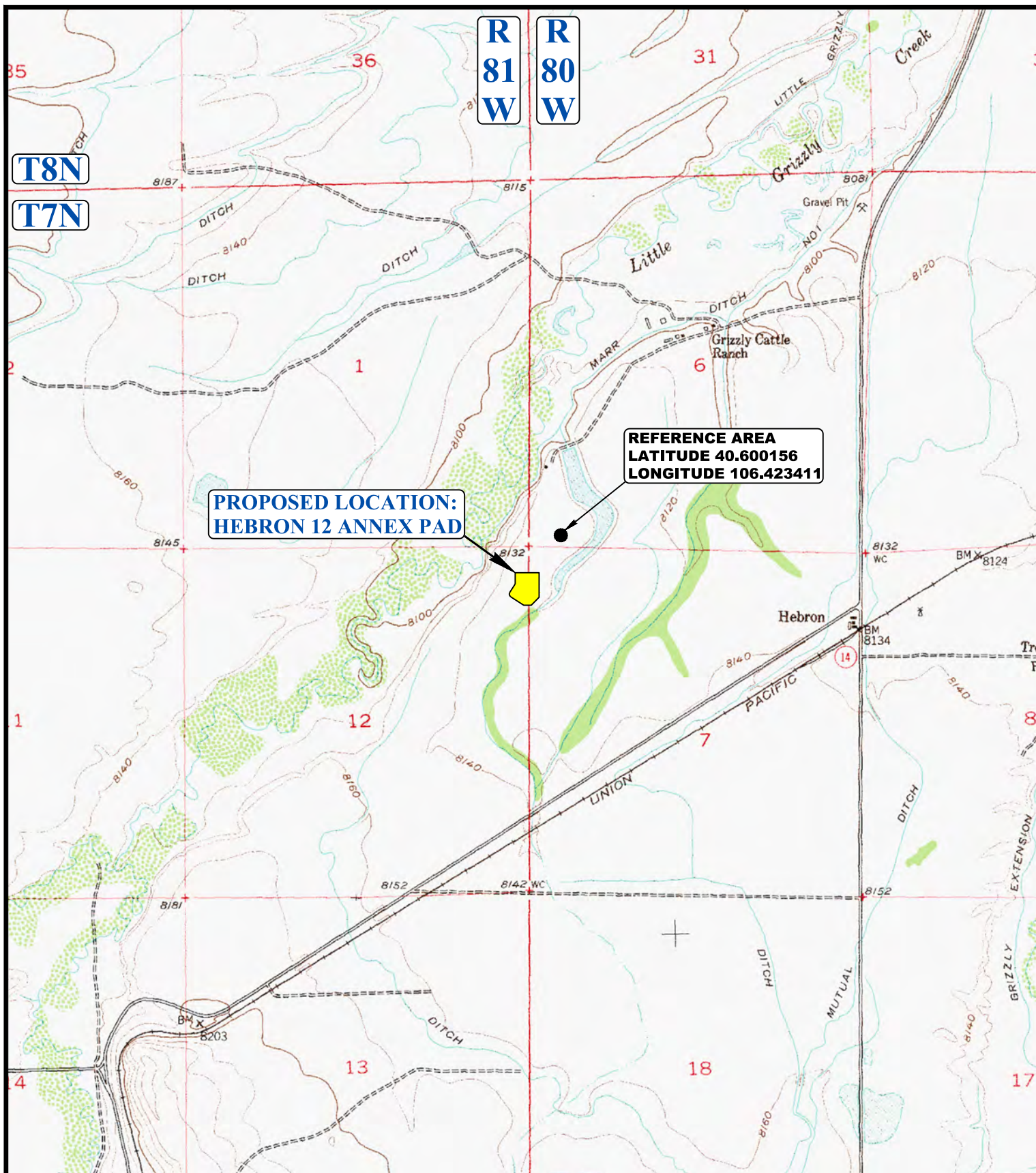
UELS, LLC
Corporate Office * 85 South 200 East
Vernal, UT 84078 * (435) 789-1017



SandRidge Exploration & Production, LLC

HEBRON 12 ANNEX PAD
NE 1/4 NE 1/4, SECTION 12, T7N, R81W, 6th P.M. &
NW 1/4 NW 1/4, SECTION 7, T7N, R80W, 6th P.M.
JACKSON COUNTY, COLORADO

SURVEYED BY	C.M., D.S.	09-01-16	SCALE
DRAWN BY	C.D.L.	09-20-16	1 : 12,000
HYDROLOGY MAP			TOPO W



LEGEND:



UELS, LLC
Corporate Office * 85 South 200 East
Vernal, UT 84078 * (435) 789-1017



SandRidge Exploration & Production, LLC

HEBRON 12 ANNEX PAD
NE 1/4 NE 1/4, SECTION 12, T7N, R81W, 6th P.M. &
NW 1/4 NW 1/4, SECTION 7, T7N, R80W, 6th P.M.
JACKSON COUNTY, COLORADO

SURVEYED BY	C.M., D.S.	09-01-16	SCALE
DRAWN BY	C.D.L.	09-20-16	1 : 24,000
REFERENCE AREA MAP			REF TOPO



PHOTO: VIEW OF REFERENCE AREA

CAMERA ANGLE: NORTHERLY



PHOTO: VIEW OF REFERENCE AREA

CAMERA ANGLE: EASTERLY

SandRidge Exploration & Production, LLC

HEBRON 12 ANNEX PAD
NE 1/4 NE 1/4, SECTION 12, T7N, R81W, 6th P.M. &
NW 1/4 NW 1/4, SECTION 7, T7N, R80W, 6th P.M.
JACKSON COUNTY, COLORADO

TAKEN BY	C.M., D.S.	09-01-16	
DRAWN BY	C.D.L.	09-20-16	
REFERENCE AREA PHOTOS			REF 1



UELS, LLC
 Corporate Office * 85 South 200 East
 Vernal, UT 84078 * (435) 789-1017



PHOTO: VIEW OF REFERENCE AREA

CAMERA ANGLE: SOUTHERLY



PHOTO: VIEW OF REFERENCE AREA

CAMERA ANGLE: WESTERLY

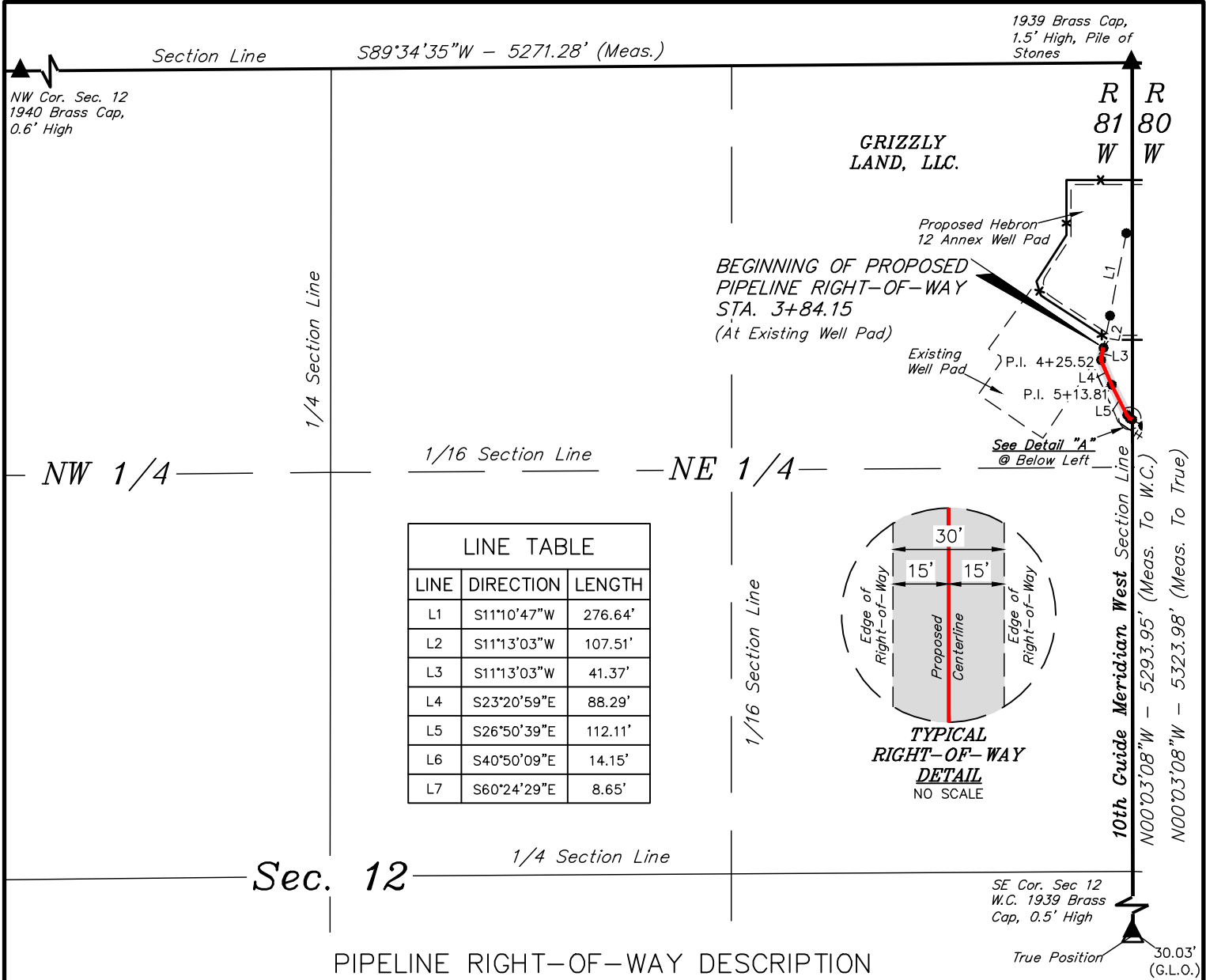
SandRidge Exploration & Production, LLC

HEBRON 12 ANNEX PAD
NE 1/4 NE 1/4, SECTION 12, T7N, R81W, 6th P.M. &
NW 1/4 NW 1/4, SECTION 7, T7N, R80W, 6th P.M.
JACKSON COUNTY, COLORADO

TAKEN BY	C.M., D.S.	09-01-16	
DRAWN BY	C.D.L.	09-20-16	
REFERENCE AREA PHOTOS			REF 2



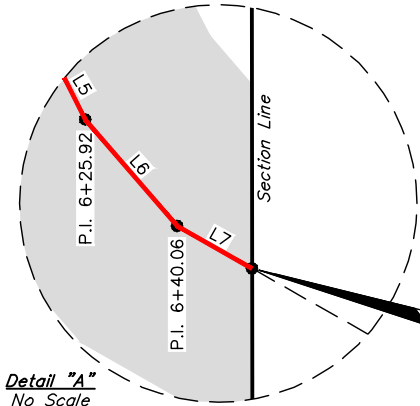
UELS, LLC
 Corporate Office * 85 South 200 East
 Vernal, UT 84078 * (435) 789-1017



PIPELINE RIGHT-OF-WAY DESCRIPTION

A 30' WIDE RIGHT-OF-WAY 15' ON EACH SIDE OF THE FOLLOWING DESCRIBED CENTERLINE.

BEGINNING AT A POINT IN THE NE 1/4 NE 1/4 OF SECTION 12, T7N, R81W, 6th P.M., WHICH BEARS $S05^{\circ}40'54''W$ 942.16' FROM THE NORTHEAST CORNER OF SAID SECTION 12, THENCE $S11^{\circ}13'03''W$ 41.37'; THENCE $S23^{\circ}20'59''E$ 88.29'; THENCE $S26^{\circ}50'39''E$ 112.11'; THENCE $S40^{\circ}50'09''E$ 14.15'; THENCE $S60^{\circ}24'29''E$ 8.65' TO A POINT ON THE EAST LINE OF THE NE 1/4 NE 1/4 OF SAID SECTION 12, WHICH BEARS $S00^{\circ}03'08''E$ 1174.18' FROM THE NORTHEAST CORNER OF SAID SECTION 12. THE SIDE LINES OF SAID DESCRIBED RIGHT-OF-WAY BEING SHORTENED OR ELONGATED TO MEET THE GRANTOR'S PROPERTY LINES. BASIS OF BEARINGS IS A G.P.S. OBSERVATION. CONTAINS 0.182 ACRES MORE OR LESS.



END OF PROPOSED PIPELINE RIGHT-OF-WAY ON GRIZZLY LAND, LLC. LANDS IN SEC. 12 STA. 6+48.72 (At Section Line)

BEGINNING OF PIPELINE STA. 3+84.15 BEARS $S05^{\circ}40'54''W$ 942.16' FROM THE NORTHEAST CORNER OF SECTION 12, T7N, R81W, 6th P.M..

END OF PIPELINE ON GRIZZLY LAND, LLC. LANDS IN SECTION 12 STA. 6+48.72 BEARS $S00^{\circ}03'08''E$ 1174.18' FROM THE NORTHEAST CORNER OF SECTION 12, T7N, R81W, 6th P.M.

- ▲ = SECTION CORNERS LOCATED.
- △ = SECTION CORNERS RE-ESTABLISHED. (Not Set on Ground.)



ACREAGE / LENGTH TABLE			
PROPERTY OWNER	FEET	ACRES	RODS
GRIZZLY LAND, LLC	264.57	0.182	16.03

CERTIFICATE

THIS IS TO CERTIFY THAT THE ABOVE PLAN WAS PREPARED FROM FIELD NOTES OF ACTUAL SURVEYS MADE BY ME OR UNDER MY SUPERVISION AND THAT THE SAME ARE TRUE AND CORRECT TO THE BEST OF MY KNOWLEDGE AND BELIEF.



NOTES:

- Basis of bearings is a G.P.S. observation.



SandRidge Exploration & Production, LLC

HEBRON 12 ANNEX PAD PIPELINE
SECTION 12, T7N, R81W, 6th P.M.
JACKSON COUNTY, COLORADO

SURVEYED BY	J.C.	10-07-16	SCALE
DRAWN BY	S.O.	10-11-16	1" = 500'
PIPELINE R-O-W			



UELS, LLC
Corporate Office * 85 South 200 East
Vernal, UT 84078 * (435) 789-1017

PIPELINE RIGHT-OF-WAY DESCRIPTION

A 30' WIDE RIGHT-OF-WAY 15' ON EACH SIDE OF THE FOLLOWING DESCRIBED CENTERLINE.

BEGINNING AT A POINT ON THE WEST LINE OF THE NW 1/4 NW 1/4 OF SECTION 7, T7N, R80W, 6th P.M., WHICH BEARS S00°03'08"E 1174.18' FROM THE NORTHWEST CORNER OF SAID SECTION 7, THENCE S60°24'29"E 41.58'; THENCE S72°40'43"E 102.64'; THENCE S69°17'14"E 100.58'; THENCE S69°52'35"E 102.04'; THENCE S69°05'44"E 118.60'; THENCE S70°12'54"E 123.55'; THENCE S68°25'09"E 111.86'; THENCE S68°50'10"E 108.16'; THENCE S70°03'50"E 40.67'; THENCE S68°40'28"E 546.89'; THENCE S69°28'46"E 85.14'; THENCE S75°40'42"E 131.04'; THENCE S76°07'14"E 120.81'; THENCE S76°28'38"E 124.60'; THENCE S76°53'48"E 116.30'; THENCE S78°17'57"E 223.41'; THENCE S74°37'19"E 144.59'; THENCE S75°35'22"E 127.42'; THENCE S79°01'33"E 164.04'; THENCE S88°25'01"E 70.48'; THENCE N87°51'06"E 96.24'; THENCE N88°14'00"E 142.97'; THENCE N83°35'33"E 144.32' TO A POINT IN THE SW 1/4 NE 1/4 OF SAID SECTION 7, WHICH BEARS S14°24'45"E 1927.74' FROM THE NORTH 1/4 CORNER OF SAID SECTION 7. THE SIDE LINES OF SAID DESCRIBED RIGHT-OF-WAY BEING SHORTENED OR ELONGATED TO MEET THE GRANTOR'S PROPERTY LINES. BASIS OF BEARINGS IS A G.P.S. OBSERVATION. CONTAINS 2.127 ACRES MORE OR LESS.

LINE TABLE		
LINE	DIRECTION	LENGTH
L8	S60°24'29"E	41.58'
L9	S72°40'43"E	102.64'
L10	S69°17'14"E	100.58'
L11	S69°52'35"E	102.04'
L12	S69°05'44"E	118.60'
L13	S70°12'54"E	123.55'
L14	S68°25'09"E	111.86'
L15	S68°50'10"E	108.16'
L16	S70°03'50"E	40.67'
L17	S68°40'28"E	546.89'
L18	S69°28'46"E	85.14'
L19	S75°40'42"E	131.04'
L20	S76°07'14"E	120.81'
L21	S76°28'38"E	124.60'
L22	S76°53'48"E	116.30'
L23	S78°17'57"E	223.41'
L24	S74°37'19"E	144.59'
L25	S75°35'22"E	127.42'
L26	S79°01'33"E	164.04'
L27	S88°25'01"E	70.48'
L28	N87°51'06"E	96.24'
L29	N88°14'00"E	142.97'
L30	N83°35'33"E	144.32'
L31	N84°36'37"E	425.31'

CERTIFICATE

THIS IS TO CERTIFY THAT THE ABOVE PLAT WAS PREPARED FROM FIELD NOTES OF ACTUAL SURVEYS MADE BY ME OR UNDER MY SUPERVISION AND THAT THE SAME ARE TRUE AND CORRECT TO THE BEST OF MY KNOWLEDGE AND BELIEF.



REGISTERED LAND SURVEYOR
REGISTRATION NO. 28285
STATE OF COLORADO

NOTES:
• Basis of bearings is a G.P.S. observation.



SandRidge Exploration & Production, LLC

HEBRON 12 ANNEX PAD PIPELINE
SECTION 7, T7N, R80W, 6th P.M.
JACKSON COUNTY, COLORADO

SURVEYED BY	J.C.	10-07-16	SCALE
DRAWN BY	S.O.	10-11-16	N/A
PIPELINE R-O-W			



UELS, LLC
Corporate Office * 85 South 200 East
Vernal, UT 84078 * (435) 789-1017