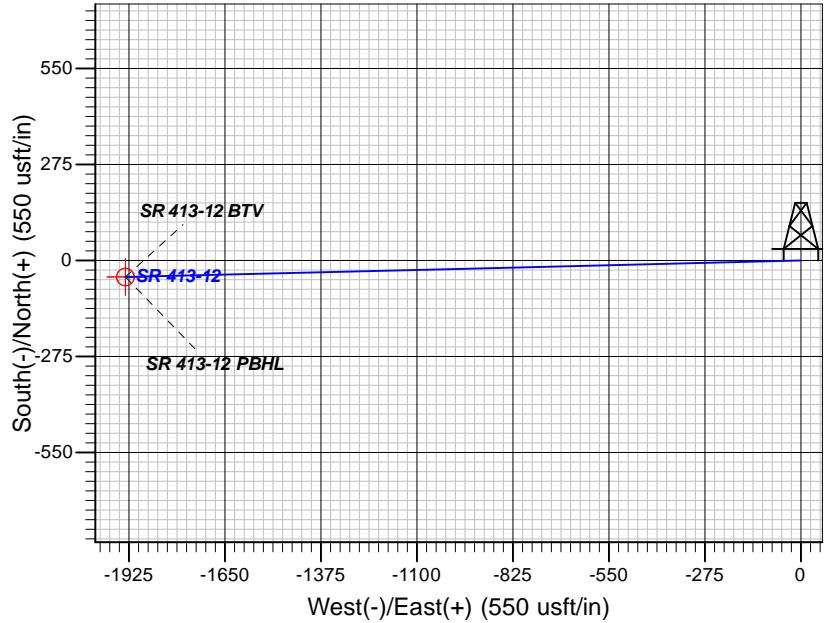
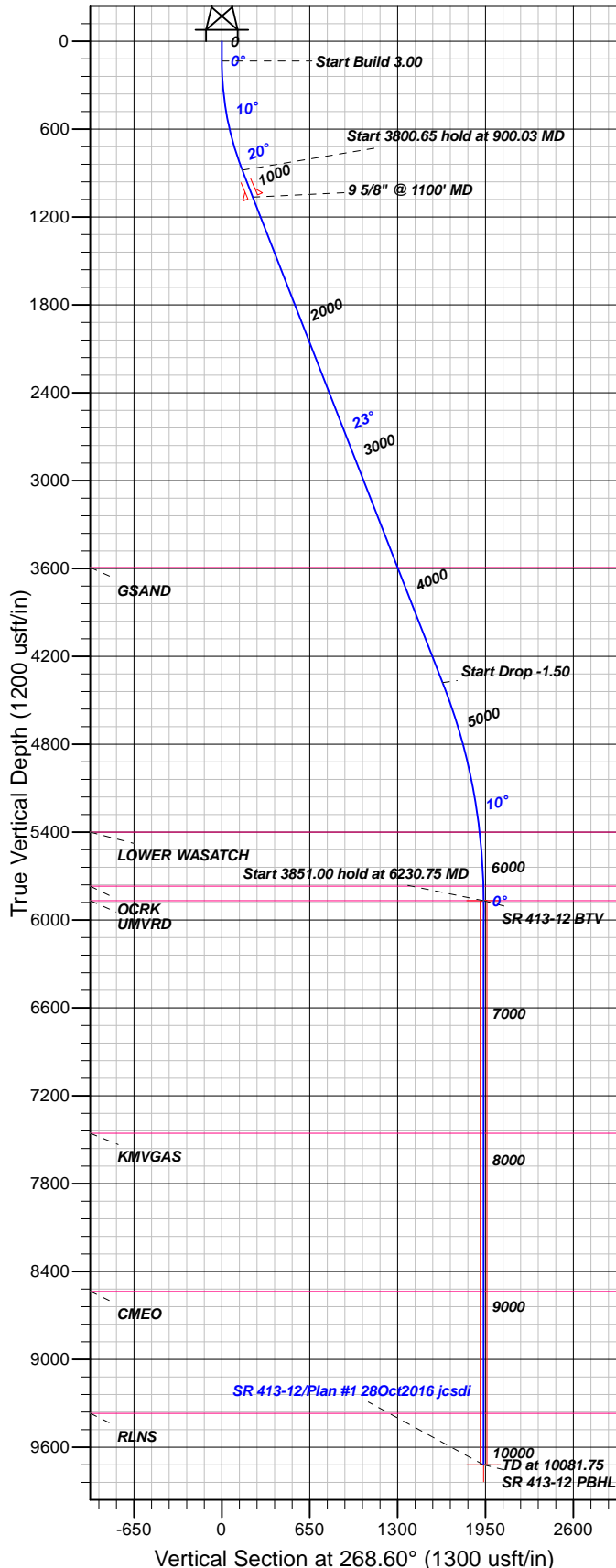


Well Details: SR 413-12

GL 7478' & RKB 24' @ 7502.00usft (H&P 318)
+N/-S 0.00 +E/-W 0.00 Northing 1597678.40 Easting 2340243.30 Latitude 39.4511014 Longitude -107.8366680 Slot SR 413-12 (A6)

T M Azimuths to True North
Magnetic North: 9.33°
Magnetic Field
Strength: 51770.0snT
Dip Angle: 65.68°
Date: 10/28/2016
Model: HDGM



FORMATION TOP DETAILS

TVDPath	MDPath	Formation
3593.00	3846.55	GSAND
5401.00	5761.57	LOWER WASATCH
5769.00	6130.74	OCRK
5869.00	6230.75	UMVRD
7456.00	7817.75	KMGAS
8536.00	8897.75	CMEQ
9369.00	9730.75	RLNS

Plan: Plan #1 28Oct2016 jcsdi

12:30, November 03 2016
Created By: Janie Collins

PROJECT DETAILS: Garfield County, CO NAD83

Geodetic System: US State Plane 1983
Datum: North American Datum 1983
Ellipsoid: GRS 1980
Zone: Colorado Central Zone

System Datum: Mean Sea Level

CASING DETAILS

TVD	MD	Name	Size
1063.87	1100.00	9 5/8" @ 1100' MD	9.62

SECTION DETAILS

Sec	MD	Inc	Azi	TVD	+N/-S	+E/-W	Dleg	TFace	Vsect	Target
1	0.00	0.00	0.00	0.00	0.00	0.00	0.00	0.00	0.00	
2	135.00	0.00	0.00	135.00	0.00	0.00	0.00	0.00	0.00	
3	900.03	22.95	268.60	879.74	-3.69	-151.14	3.00	268.60	151.19	
4	4700.68	22.95	268.60	4379.52	-39.81	-1632.74	0.00	0.001633.23		
5	6230.75	0.00	0.00	5869.00	-47.18	-1935.03	1.50	180.001935.60		SR 413-12 BTV
6	10081.75	0.00	0.00	9720.00	-47.18	-1935.03	0.00	0.001935.60		SR 413-12 PBHL

DESIGN TARGET DETAILS

Name	TVD	+N/-S	+E/-W	Northing	Easting	Latitude	Longitude	Shape
SR 413-12 BTV	5869.00	-47.18	-1935.03	1597681.00	2338307.70	39.4509716	-107.8435206	Circle (Radius: 25.00)
- plan hits target center								
SR 413-12 PBHL	9720.00	-47.18	-1935.03	1597681.00	2338307.70	39.4509716	-107.8435206	Point
- plan hits target center								



TEP Rocky Mountain LLC

Garfield County, CO NAD83

SR 23-12 Pad

SR 413-12 - Slot SR 413-12 (A6)

OH

Plan: Plan #1 28Oct2016 jcsdi

Standard Planning Report

03 November, 2016



Database:	Grand Junction District	Local Co-ordinate Reference:	Well SR 413-12 - Slot SR 413-12 (A6)
Company:	TEP Rocky Mountain LLC	TVD Reference:	GL 7478' & RKB 24' @ 7502.00usft (H&P 318)
Project:	Garfield County, CO NAD83	MD Reference:	GL 7478' & RKB 24' @ 7502.00usft (H&P 318)
Site:	SR 23-12 Pad	North Reference:	True
Well:	SR 413-12	Survey Calculation Method:	Minimum Curvature
Wellbore:	OH		
Design:	Plan #1 28Oct2016 jcsdi		

Project	Garfield County, CO NAD83		
Map System:	US State Plane 1983	System Datum:	Mean Sea Level
Geo Datum:	North American Datum 1983		
Map Zone:	Colorado Central Zone		

Site	SR 23-12 Pad			
Site Position:		Northing:	1,597,713.40 usft	Latitude: 39.4511965
From: Map		Easting:	2,340,229.70 usft	Longitude: -107.8367194
Position Uncertainty:	0.00 usft	Slot Radius:	13.20 in	Grid Convergence: -1.47 °

Well	SR 413-12 - Slot SR 413-12 (A6)			
Well Position	+N/-S	-34.64 usft	Northing:	1,597,678.40 usft
	+E/-W	14.50 usft	Easting:	2,340,243.30 usft
Position Uncertainty	0.00 usft		Wellhead Elevation:	0.00 usft
			Ground Level:	7,478.00 usft

Wellbore	OH				
Magnetics	Model Name	Sample Date	Declination (°)	Dip Angle (°)	Field Strength (nT)
	HDGM	10/28/2016	9.33	65.68	51,770

Design	Plan #1 28Oct2016 jcsdi			
Audit Notes:				
Version:	Phase:	PLAN	Tie On Depth:	0.00
Vertical Section:	Depth From (TVD) (usft)	+N/-S (usft)	+E/-W (usft)	Direction (°)
	0.00	0.00	0.00	268.60

Plan Sections										
Measured Depth (usft)	Inclination (°)	Azimuth (°)	Vertical Depth (usft)	+N/-S (usft)	+E/-W (usft)	Dogleg Rate (°/100usft)	Build Rate (°/100usft)	Turn Rate (°/100usft)	TFO (°)	Target
0.00	0.00	0.00	0.00	0.00	0.00	0.00	0.00	0.00	0.00	
135.00	0.00	0.00	135.00	0.00	0.00	0.00	0.00	0.00	0.00	
900.03	22.95	268.60	879.74	-3.69	-151.14	3.00	3.00	0.00	268.60	
4,700.68	22.95	268.60	4,379.52	-39.81	-1,632.74	0.00	0.00	0.00	0.00	
6,230.75	0.00	0.00	5,869.00	-47.18	-1,935.03	1.50	-1.50	0.00	180.00	SR 413-12 BTW
10,081.75	0.00	0.00	9,720.00	-47.18	-1,935.03	0.00	0.00	0.00	0.00	SR 413-12 PBHL

Database:	Grand Junction District	Local Co-ordinate Reference:	Well SR 413-12 - Slot SR 413-12 (A6)
Company:	TEP Rocky Mountain LLC	TVD Reference:	GL 7478' & RKB 24' @ 7502.00usft (H&P 318)
Project:	Garfield County, CO NAD83	MD Reference:	GL 7478' & RKB 24' @ 7502.00usft (H&P 318)
Site:	SR 23-12 Pad	North Reference:	True
Well:	SR 413-12	Survey Calculation Method:	Minimum Curvature
Wellbore:	OH		
Design:	Plan #1 28Oct2016 jcsdi		

Planned Survey										
Measured Depth (usft)	Inclination (°)	Azimuth (°)	Vertical Depth (usft)	+N/-S (usft)	+E/-W (usft)	Vertical Section (usft)	Dogleg Rate (°/100usft)	Build Rate (°/100usft)	Turn Rate (°/100usft)	
0.00	0.00	0.00	0.00	0.00	0.00	0.00	0.00	0.00	0.00	
100.00	0.00	0.00	100.00	0.00	0.00	0.00	0.00	0.00	0.00	
135.00	0.00	0.00	135.00	0.00	0.00	0.00	0.00	0.00	0.00	
200.00	1.95	268.60	199.99	-0.03	-1.11	1.11	3.00	3.00	0.00	
300.00	4.95	268.60	299.79	-0.17	-7.12	7.12	3.00	3.00	0.00	
400.00	7.95	268.60	399.15	-0.45	-18.35	18.36	3.00	3.00	0.00	
500.00	10.95	268.60	497.78	-0.85	-34.76	34.77	3.00	3.00	0.00	
600.00	13.95	268.60	595.42	-1.37	-56.31	56.33	3.00	3.00	0.00	
700.00	16.95	268.60	691.79	-2.02	-82.94	82.97	3.00	3.00	0.00	
800.00	19.95	268.60	786.64	-2.79	-114.58	114.61	3.00	3.00	0.00	
900.00	22.95	268.60	879.71	-3.68	-151.13	151.17	3.00	3.00	0.00	
900.03	22.95	268.60	879.74	-3.69	-151.14	151.19	3.00	3.00	0.00	
1,000.00	22.95	268.60	971.79	-4.64	-190.11	190.17	0.00	0.00	0.00	
1,100.00	22.95	268.60	1,063.87	-5.59	-229.09	229.16	0.00	0.00	0.00	
9 5/8" @ 1100' MD										
1,200.00	22.95	268.60	1,155.96	-6.54	-268.08	268.16	0.00	0.00	0.00	
1,300.00	22.95	268.60	1,248.04	-7.49	-307.06	307.15	0.00	0.00	0.00	
1,400.00	22.95	268.60	1,340.13	-8.44	-346.04	346.15	0.00	0.00	0.00	
1,500.00	22.95	268.60	1,432.21	-9.39	-385.03	385.14	0.00	0.00	0.00	
1,600.00	22.95	268.60	1,524.29	-10.34	-424.01	424.13	0.00	0.00	0.00	
1,700.00	22.95	268.60	1,616.38	-11.29	-462.99	463.13	0.00	0.00	0.00	
1,800.00	22.95	268.60	1,708.46	-12.24	-501.97	502.12	0.00	0.00	0.00	
1,900.00	22.95	268.60	1,800.55	-13.19	-540.96	541.12	0.00	0.00	0.00	
2,000.00	22.95	268.60	1,892.63	-14.14	-579.94	580.11	0.00	0.00	0.00	
2,100.00	22.95	268.60	1,984.71	-15.09	-618.92	619.11	0.00	0.00	0.00	
2,200.00	22.95	268.60	2,076.80	-16.04	-657.91	658.10	0.00	0.00	0.00	
2,300.00	22.95	268.60	2,168.88	-16.99	-696.89	697.10	0.00	0.00	0.00	
2,400.00	22.95	268.60	2,260.97	-17.94	-735.87	736.09	0.00	0.00	0.00	
2,500.00	22.95	268.60	2,353.05	-18.89	-774.85	775.08	0.00	0.00	0.00	
2,600.00	22.95	268.60	2,445.13	-19.84	-813.84	814.08	0.00	0.00	0.00	
2,700.00	22.95	268.60	2,537.22	-20.79	-852.82	853.07	0.00	0.00	0.00	
2,800.00	22.95	268.60	2,629.30	-21.74	-891.80	892.07	0.00	0.00	0.00	
2,900.00	22.95	268.60	2,721.38	-22.70	-930.79	931.06	0.00	0.00	0.00	
3,000.00	22.95	268.60	2,813.47	-23.65	-969.77	970.06	0.00	0.00	0.00	
3,100.00	22.95	268.60	2,905.55	-24.60	-1,008.75	1,009.05	0.00	0.00	0.00	
3,200.00	22.95	268.60	2,997.64	-25.55	-1,047.73	1,048.04	0.00	0.00	0.00	
3,300.00	22.95	268.60	3,089.72	-26.50	-1,086.72	1,087.04	0.00	0.00	0.00	
3,400.00	22.95	268.60	3,181.80	-27.45	-1,125.70	1,126.03	0.00	0.00	0.00	
3,500.00	22.95	268.60	3,273.89	-28.40	-1,164.68	1,165.03	0.00	0.00	0.00	
3,600.00	22.95	268.60	3,365.97	-29.35	-1,203.66	1,204.02	0.00	0.00	0.00	
3,700.00	22.95	268.60	3,458.06	-30.30	-1,242.65	1,243.02	0.00	0.00	0.00	
3,800.00	22.95	268.60	3,550.14	-31.25	-1,281.63	1,282.01	0.00	0.00	0.00	
3,846.55	22.95	268.60	3,593.00	-31.69	-1,299.78	1,300.16	0.00	0.00	0.00	
GSAND										
3,900.00	22.95	268.60	3,642.22	-32.20	-1,320.61	1,321.01	0.00	0.00	0.00	
4,000.00	22.95	268.60	3,734.31	-33.15	-1,359.60	1,360.00	0.00	0.00	0.00	
4,100.00	22.95	268.60	3,826.39	-34.10	-1,398.58	1,398.99	0.00	0.00	0.00	
4,200.00	22.95	268.60	3,918.47	-35.05	-1,437.56	1,437.99	0.00	0.00	0.00	
4,300.00	22.95	268.60	4,010.56	-36.00	-1,476.54	1,476.98	0.00	0.00	0.00	
4,400.00	22.95	268.60	4,102.64	-36.95	-1,515.53	1,515.98	0.00	0.00	0.00	
4,500.00	22.95	268.60	4,194.73	-37.90	-1,554.51	1,554.97	0.00	0.00	0.00	
4,600.00	22.95	268.60	4,286.81	-38.85	-1,593.49	1,593.97	0.00	0.00	0.00	

Database:	Grand Junction District	Local Co-ordinate Reference:	Well SR 413-12 - Slot SR 413-12 (A6)
Company:	TEP Rocky Mountain LLC	TVD Reference:	GL 7478' & RKB 24' @ 7502.00usft (H&P 318)
Project:	Garfield County, CO NAD83	MD Reference:	GL 7478' & RKB 24' @ 7502.00usft (H&P 318)
Site:	SR 23-12 Pad	North Reference:	True
Well:	SR 413-12	Survey Calculation Method:	Minimum Curvature
Wellbore:	OH		
Design:	Plan #1 28Oct2016 jcsdi		

Planned Survey									
Measured Depth (usft)	Inclination (°)	Azimuth (°)	Vertical Depth (usft)	+N/-S (usft)	+E/-W (usft)	Vertical Section (usft)	Dogleg Rate (°/100usft)	Build Rate (°/100usft)	Turn Rate (°/100usft)
4,700.00	22.95	268.60	4,378.89	-39.80	-1,632.48	1,632.96	0.00	0.00	0.00
4,700.68	22.95	268.60	4,379.52	-39.81	-1,632.74	1,633.23	0.00	0.00	0.00
4,800.00	21.46	268.60	4,471.47	-40.73	-1,670.27	1,670.76	1.50	-1.50	0.00
4,900.00	19.96	268.60	4,565.01	-41.59	-1,705.62	1,706.13	1.50	-1.50	0.00
5,000.00	18.46	268.60	4,659.43	-42.39	-1,738.51	1,739.03	1.50	-1.50	0.00
5,100.00	16.96	268.60	4,754.69	-43.13	-1,768.93	1,769.45	1.50	-1.50	0.00
5,200.00	15.46	268.60	4,850.71	-43.81	-1,796.84	1,797.37	1.50	-1.50	0.00
5,300.00	13.96	268.60	4,947.43	-44.43	-1,822.22	1,822.76	1.50	-1.50	0.00
5,400.00	12.46	268.60	5,044.78	-44.99	-1,845.07	1,845.62	1.50	-1.50	0.00
5,500.00	10.96	268.60	5,142.70	-45.48	-1,865.36	1,865.91	1.50	-1.50	0.00
5,600.00	9.46	268.60	5,241.11	-45.91	-1,883.08	1,883.64	1.50	-1.50	0.00
5,700.00	7.96	268.60	5,339.95	-46.28	-1,898.22	1,898.79	1.50	-1.50	0.00
5,761.57	7.04	268.60	5,401.00	-46.48	-1,906.26	1,906.82	1.50	-1.50	0.00
LOWER WASATCH									
5,800.00	6.46	268.60	5,439.16	-46.59	-1,910.77	1,911.34	1.50	-1.50	0.00
5,900.00	4.96	268.60	5,538.66	-46.83	-1,920.72	1,921.29	1.50	-1.50	0.00
6,000.00	3.46	268.60	5,638.39	-47.01	-1,928.06	1,928.63	1.50	-1.50	0.00
6,100.00	1.96	268.60	5,738.27	-47.13	-1,932.79	1,933.36	1.50	-1.50	0.00
6,130.74	1.50	268.60	5,769.00	-47.15	-1,933.72	1,934.29	1.50	-1.50	0.00
OCRK									
6,200.00	0.46	268.60	5,838.25	-47.18	-1,934.90	1,935.48	1.50	-1.50	0.00
6,230.75	0.00	0.00	5,869.00	-47.18	-1,935.03	1,935.60	1.50	-1.50	297.21
UMVRD - SR 413-12 BTV									
6,300.00	0.00	0.00	5,938.25	-47.18	-1,935.03	1,935.60	0.00	0.00	0.00
6,400.00	0.00	0.00	6,038.25	-47.18	-1,935.03	1,935.60	0.00	0.00	0.00
6,500.00	0.00	0.00	6,138.25	-47.18	-1,935.03	1,935.60	0.00	0.00	0.00
6,600.00	0.00	0.00	6,238.25	-47.18	-1,935.03	1,935.60	0.00	0.00	0.00
6,700.00	0.00	0.00	6,338.25	-47.18	-1,935.03	1,935.60	0.00	0.00	0.00
6,800.00	0.00	0.00	6,438.25	-47.18	-1,935.03	1,935.60	0.00	0.00	0.00
6,900.00	0.00	0.00	6,538.25	-47.18	-1,935.03	1,935.60	0.00	0.00	0.00
7,000.00	0.00	0.00	6,638.25	-47.18	-1,935.03	1,935.60	0.00	0.00	0.00
7,100.00	0.00	0.00	6,738.25	-47.18	-1,935.03	1,935.60	0.00	0.00	0.00
7,200.00	0.00	0.00	6,838.25	-47.18	-1,935.03	1,935.60	0.00	0.00	0.00
7,300.00	0.00	0.00	6,938.25	-47.18	-1,935.03	1,935.60	0.00	0.00	0.00
7,400.00	0.00	0.00	7,038.25	-47.18	-1,935.03	1,935.60	0.00	0.00	0.00
7,500.00	0.00	0.00	7,138.25	-47.18	-1,935.03	1,935.60	0.00	0.00	0.00
7,600.00	0.00	0.00	7,238.25	-47.18	-1,935.03	1,935.60	0.00	0.00	0.00
7,700.00	0.00	0.00	7,338.25	-47.18	-1,935.03	1,935.60	0.00	0.00	0.00
7,800.00	0.00	0.00	7,438.25	-47.18	-1,935.03	1,935.60	0.00	0.00	0.00
7,817.75	0.00	0.00	7,456.00	-47.18	-1,935.03	1,935.60	0.00	0.00	0.00
KMGAS									
7,900.00	0.00	0.00	7,538.25	-47.18	-1,935.03	1,935.60	0.00	0.00	0.00
8,000.00	0.00	0.00	7,638.25	-47.18	-1,935.03	1,935.60	0.00	0.00	0.00
8,100.00	0.00	0.00	7,738.25	-47.18	-1,935.03	1,935.60	0.00	0.00	0.00
8,200.00	0.00	0.00	7,838.25	-47.18	-1,935.03	1,935.60	0.00	0.00	0.00
8,300.00	0.00	0.00	7,938.25	-47.18	-1,935.03	1,935.60	0.00	0.00	0.00
8,400.00	0.00	0.00	8,038.25	-47.18	-1,935.03	1,935.60	0.00	0.00	0.00
8,500.00	0.00	0.00	8,138.25	-47.18	-1,935.03	1,935.60	0.00	0.00	0.00
8,600.00	0.00	0.00	8,238.25	-47.18	-1,935.03	1,935.60	0.00	0.00	0.00
8,700.00	0.00	0.00	8,338.25	-47.18	-1,935.03	1,935.60	0.00	0.00	0.00
8,800.00	0.00	0.00	8,438.25	-47.18	-1,935.03	1,935.60	0.00	0.00	0.00
8,897.75	0.00	0.00	8,536.00	-47.18	-1,935.03	1,935.60	0.00	0.00	0.00

Database:	Grand Junction District	Local Co-ordinate Reference:	Well SR 413-12 - Slot SR 413-12 (A6)
Company:	TEP Rocky Mountain LLC	TVD Reference:	GL 7478' & RKB 24' @ 7502.00usft (H&P 318)
Project:	Garfield County, CO NAD83	MD Reference:	GL 7478' & RKB 24' @ 7502.00usft (H&P 318)
Site:	SR 23-12 Pad	North Reference:	True
Well:	SR 413-12	Survey Calculation Method:	Minimum Curvature
Wellbore:	OH		
Design:	Plan #1 28Oct2016 jcsdi		

Planned Survey									
Measured Depth (usft)	Inclination (°)	Azimuth (°)	Vertical Depth (usft)	+N/-S (usft)	+E/-W (usft)	Vertical Section (usft)	Dogleg Rate (°/100usft)	Build Rate (°/100usft)	Turn Rate (°/100usft)
CMEO									
8,900.00	0.00	0.00	8,538.25	-47.18	-1,935.03	1,935.60	0.00	0.00	0.00
9,000.00	0.00	0.00	8,638.25	-47.18	-1,935.03	1,935.60	0.00	0.00	0.00
9,100.00	0.00	0.00	8,738.25	-47.18	-1,935.03	1,935.60	0.00	0.00	0.00
9,200.00	0.00	0.00	8,838.25	-47.18	-1,935.03	1,935.60	0.00	0.00	0.00
9,300.00	0.00	0.00	8,938.25	-47.18	-1,935.03	1,935.60	0.00	0.00	0.00
9,400.00	0.00	0.00	9,038.25	-47.18	-1,935.03	1,935.60	0.00	0.00	0.00
9,500.00	0.00	0.00	9,138.25	-47.18	-1,935.03	1,935.60	0.00	0.00	0.00
9,600.00	0.00	0.00	9,238.25	-47.18	-1,935.03	1,935.60	0.00	0.00	0.00
9,700.00	0.00	0.00	9,338.25	-47.18	-1,935.03	1,935.60	0.00	0.00	0.00
9,730.75	0.00	0.00	9,369.00	-47.18	-1,935.03	1,935.60	0.00	0.00	0.00
RLNS									
9,800.00	0.00	0.00	9,438.25	-47.18	-1,935.03	1,935.60	0.00	0.00	0.00
9,900.00	0.00	0.00	9,538.25	-47.18	-1,935.03	1,935.60	0.00	0.00	0.00
10,000.00	0.00	0.00	9,638.25	-47.18	-1,935.03	1,935.60	0.00	0.00	0.00
10,081.75	0.00	0.00	9,720.00	-47.18	-1,935.03	1,935.60	0.00	0.00	0.00
SR 413-12 PBHL									

Design Targets									
Target Name	Dip Angle (°)	Dip Dir. (°)	TVD (usft)	+N/-S (usft)	+E/-W (usft)	Northing (usft)	Easting (usft)	Latitude	Longitude
- hit/miss target									
- Shape									
SR 413-12 BTV	0.00	0.00	5,869.00	-47.18	-1,935.03	1,597,681.00	2,338,307.70	39.4509717	-107.8435206
- plan hits target center									
- Circle (radius 25.00)									
SR 413-12 PBHL	0.00	0.00	9,720.00	-47.18	-1,935.03	1,597,681.00	2,338,307.70	39.4509717	-107.8435206
- plan hits target center									
- Point									

Casing Points					
Measured Depth (usft)	Vertical Depth (usft)	Name	Casing Diameter (in)	Hole Diameter (in)	
1,100.00	1,063.87	9 5/8" @ 1100' MD	9.62	9.62	

Database:	Grand Junction District	Local Co-ordinate Reference:	Well SR 413-12 - Slot SR 413-12 (A6)
Company:	TEP Rocky Mountain LLC	TVD Reference:	GL 7478' & RKB 24' @ 7502.00usft (H&P 318)
Project:	Garfield County, CO NAD83	MD Reference:	GL 7478' & RKB 24' @ 7502.00usft (H&P 318)
Site:	SR 23-12 Pad	North Reference:	True
Well:	SR 413-12	Survey Calculation Method:	Minimum Curvature
Wellbore:	OH		
Design:	Plan #1 28Oct2016 jcsdi		

Formations						
	Measured Depth (usft)	Vertical Depth (usft)	Name	Lithology	Dip (°)	Dip Direction (°)
	3,846.55	3,593.00	GSAND		0.00	0.00
	5,761.57	5,401.00	LOWER WASATCH		0.00	0.00
	6,130.74	5,769.00	OCRK		0.00	0.00
	6,230.75	5,869.00	UMVRD		0.00	0.00
	7,817.75	7,456.00	KMVGAS		0.00	0.00
	8,897.75	8,536.00	CMEQ		0.00	0.00
	9,730.75	9,369.00	RLNS		0.00	0.00