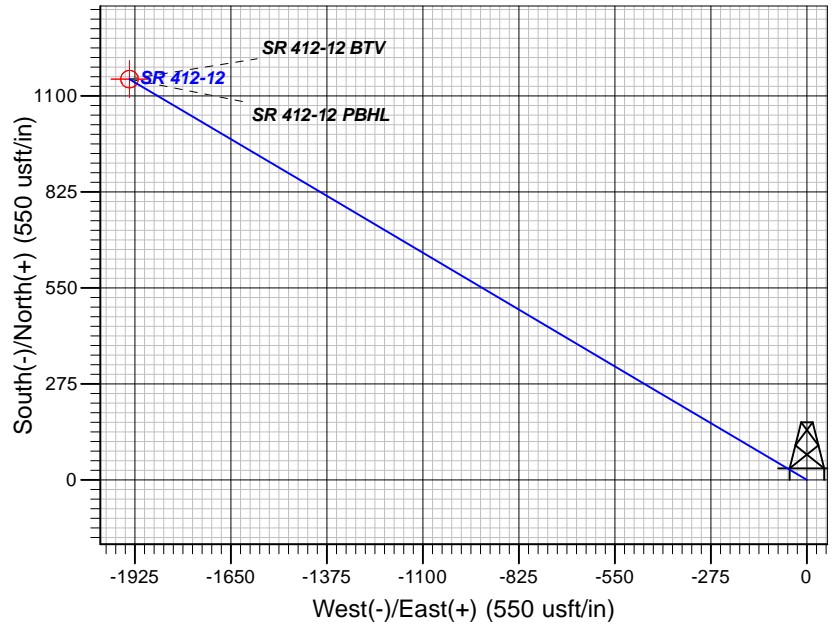
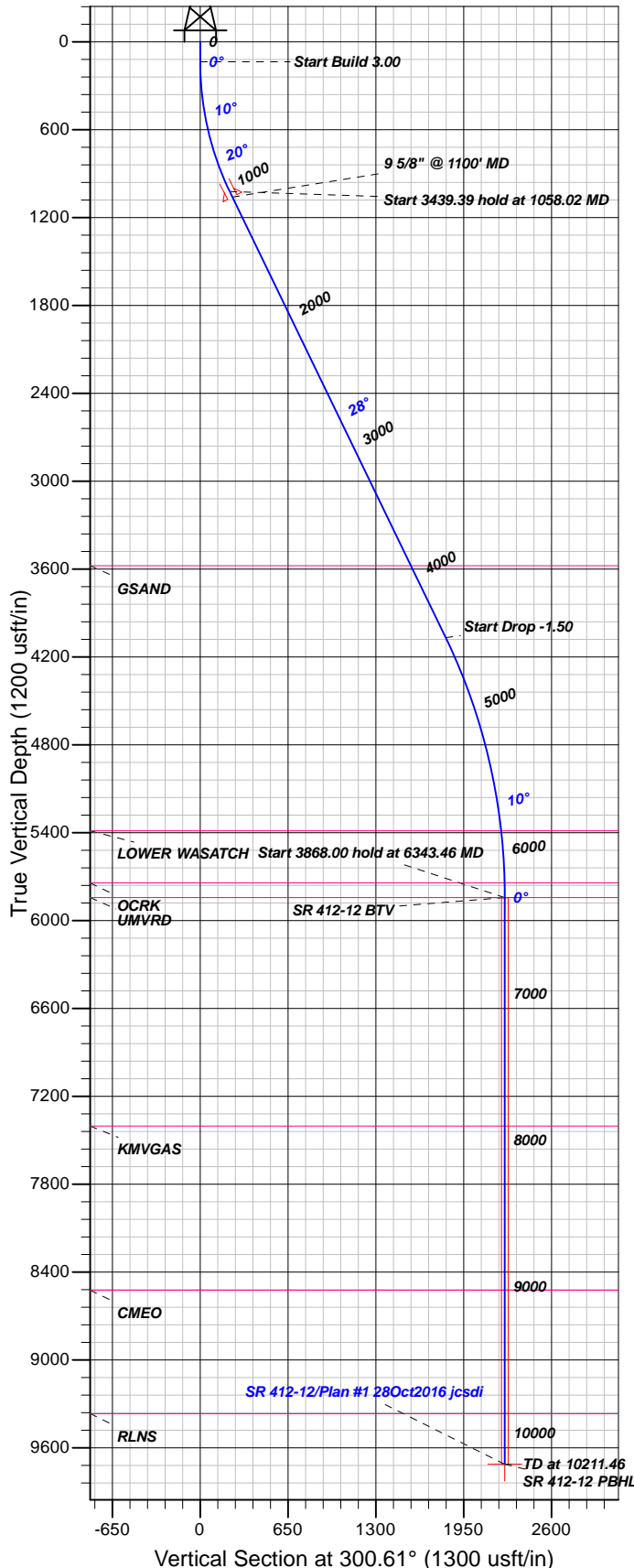


## Well Details: SR 412-12

GL 7478' & RKB 24' @ 7502.00usft (H&P 318)

+N/-S	+E/-W	Northing	Easting	Latitude	Longitude	Slot
0.00	0.00	1597706.40	2340232.40	39.4511775	-107.8367092	SR 412-12 (A2)

**T M** Azimuths to True North  
 Magnetic North: 9.33°  
 Magnetic Field  
 Strength: 51770.0snT  
 Dip Angle: 65.68°  
 Date: 10/28/2016  
 Model: HDGM



### FORMATION TOP DETAILS

TVDPath	MDPath	Formation
3577.00	3942.92	GSAND
5387.00	5886.37	LOWER WASATCH
5743.00	6243.45	OCRK
5843.00	6343.46	UMVRD
7402.00	7902.46	KMVGAS
8523.00	9023.46	CMEQ
9367.00	9867.46	RLNS

Plan: Plan #1 28Oct2016 jcsdi

12:10, November 03 2016  
 Created By: Janie Collins

PROJECT DETAILS: Garfield County, CO NAD83

Geodetic System: US State Plane 1983  
 Datum: North American Datum 1983  
 Ellipsoid: GRS 1980  
 Zone: Colorado Central Zone

System Datum: Mean Sea Level

### CASING DETAILS

TVD	MD	Name	Size
1059.68	1100.00	9 5/8" @ 1100' MD	9.62

### SECTION DETAILS

Sec	MD	Inc	Azi	TVD	+N/-S	+E/-W	Dleg	TFace	Vsect	Target
1	0.00	0.00	0.00	0.00	0.00	0.00	0.00	0.00	0.00	
2	135.00	0.00	0.00	135.00	0.00	0.00	0.00	0.00	0.00	
3	1058.02	27.69	300.61	1022.51	111.39	-188.25	3.00	300.61	218.74	
4	4497.42	27.69	300.61	4067.99	925.30	-1563.77	0.00	0.00	1817.02	
5	6343.46	0.00	0.00	5843.00	1148.08	-1940.27	1.50	180.00	2254.49	SR 412-12 BTM
6	10211.46	0.00	0.00	9711.00	1148.08	-1940.27	0.00	0.00	2254.49	SR 412-12 PBHL

### DESIGN TARGET DETAILS

Name	TVD	+N/-S	+E/-W	Northing	Easting	Latitude	Longitude	Shape
SR 412-12 BTM	5843.00	1148.08	-1940.27	1598904.00	2338322.30	39.4543293	-107.8435806	Circle (Radius: 25.00)
- plan hits target center								
SR 412-12 PBHL	9711.00	1148.08	-1940.27	1598904.00	2338322.30	39.4543293	-107.8435806	Point
- plan hits target center								



# **TEP Rocky Mountain LLC**

**Garfield County, CO NAD83**

**SR 23-12 Pad**

**SR 412-12 - Slot SR 412-12 (A2)**

**OH**

**Plan: Plan #1 28Oct2016 jcsdi**

## **Standard Planning Report**

**03 November, 2016**



<b>Database:</b>	Grand Junction District	<b>Local Co-ordinate Reference:</b>	Well SR 412-12 - Slot SR 412-12 (A2)
<b>Company:</b>	TEP Rocky Mountain LLC	<b>TVD Reference:</b>	GL 7478' & RKB 24' @ 7502.00usft (H&P 318)
<b>Project:</b>	Garfield County, CO NAD83	<b>MD Reference:</b>	GL 7478' & RKB 24' @ 7502.00usft (H&P 318)
<b>Site:</b>	SR 23-12 Pad	<b>North Reference:</b>	True
<b>Well:</b>	SR 412-12	<b>Survey Calculation Method:</b>	Minimum Curvature
<b>Wellbore:</b>	OH		
<b>Design:</b>	Plan #1 28Oct2016 jcsdi		

<b>Project</b>	Garfield County, CO NAD83		
<b>Map System:</b>	US State Plane 1983	<b>System Datum:</b>	Mean Sea Level
<b>Geo Datum:</b>	North American Datum 1983		
<b>Map Zone:</b>	Colorado Central Zone		

<b>Site</b>	SR 23-12 Pad			
<b>Site Position:</b>		<b>Northing:</b>	1,597,713.40 usft	<b>Latitude:</b> 39.4511965
<b>From:</b> Map		<b>Easting:</b>	2,340,229.70 usft	<b>Longitude:</b> -107.8367194
<b>Position Uncertainty:</b>	0.00 usft	<b>Slot Radius:</b>	13.20 in	<b>Grid Convergence:</b> -1.47 °

<b>Well</b>	SR 412-12 - Slot SR 412-12 (A2)			
<b>Well Position</b>	<b>+N/-S</b>	-6.93 usft	<b>Northing:</b>	1,597,706.40 usft
	<b>+E/-W</b>	2.88 usft	<b>Easting:</b>	2,340,232.40 usft
<b>Position Uncertainty</b>	0.00 usft		<b>Wellhead Elevation:</b>	0.00 usft
			<b>Ground Level:</b>	7,478.00 usft

<b>Wellbore</b>	OH				
<b>Magnetics</b>	<b>Model Name</b>	<b>Sample Date</b>	<b>Declination (°)</b>	<b>Dip Angle (°)</b>	<b>Field Strength (nT)</b>
	HDGM	10/28/2016	9.33	65.68	51,770

<b>Design</b>	Plan #1 28Oct2016 jcsdi			
<b>Audit Notes:</b>				
<b>Version:</b>	<b>Phase:</b>	PLAN	<b>Tie On Depth:</b>	0.00
<b>Vertical Section:</b>	<b>Depth From (TVD) (usft)</b>	<b>+N/-S (usft)</b>	<b>+E/-W (usft)</b>	<b>Direction (°)</b>
	0.00	0.00	0.00	300.61

<b>Plan Sections</b>										
Measured Depth (usft)	Inclination (°)	Azimuth (°)	Vertical Depth (usft)	+N/-S (usft)	+E/-W (usft)	Dogleg Rate (°/100usft)	Build Rate (°/100usft)	Turn Rate (°/100usft)	TFO (°)	Target
0.00	0.00	0.00	0.00	0.00	0.00	0.00	0.00	0.00	0.00	
135.00	0.00	0.00	135.00	0.00	0.00	0.00	0.00	0.00	0.00	
1,058.02	27.69	300.61	1,022.51	111.39	-188.25	3.00	3.00	0.00	300.61	
4,497.42	27.69	300.61	4,067.99	925.30	-1,563.77	0.00	0.00	0.00	0.00	
6,343.46	0.00	0.00	5,843.00	1,148.08	-1,940.27	1.50	-1.50	0.00	180.00	SR 412-12 BTV
10,211.46	0.00	0.00	9,711.00	1,148.08	-1,940.27	0.00	0.00	0.00	0.00	SR 412-12 PBHL

<b>Database:</b>	Grand Junction District	<b>Local Co-ordinate Reference:</b>	Well SR 412-12 - Slot SR 412-12 (A2)
<b>Company:</b>	TEP Rocky Mountain LLC	<b>TVD Reference:</b>	GL 7478' & RKB 24' @ 7502.00usft (H&P 318)
<b>Project:</b>	Garfield County, CO NAD83	<b>MD Reference:</b>	GL 7478' & RKB 24' @ 7502.00usft (H&P 318)
<b>Site:</b>	SR 23-12 Pad	<b>North Reference:</b>	True
<b>Well:</b>	SR 412-12	<b>Survey Calculation Method:</b>	Minimum Curvature
<b>Wellbore:</b>	OH		
<b>Design:</b>	Plan #1 28Oct2016 jcsdi		

Planned Survey										
Measured Depth (usft)	Inclination (°)	Azimuth (°)	Vertical Depth (usft)	+N/-S (usft)	+E/-W (usft)	Vertical Section (usft)	Dogleg Rate (°/100usft)	Build Rate (°/100usft)	Turn Rate (°/100usft)	
0.00	0.00	0.00	0.00	0.00	0.00	0.00	0.00	0.00	0.00	
100.00	0.00	0.00	100.00	0.00	0.00	0.00	0.00	0.00	0.00	
135.00	0.00	0.00	135.00	0.00	0.00	0.00	0.00	0.00	0.00	
200.00	1.95	300.61	199.99	0.56	-0.95	1.11	3.00	3.00	0.00	
300.00	4.95	300.61	299.79	3.63	-6.13	7.12	3.00	3.00	0.00	
400.00	7.95	300.61	399.15	9.35	-15.80	18.36	3.00	3.00	0.00	
500.00	10.95	300.61	497.78	17.71	-29.93	34.77	3.00	3.00	0.00	
600.00	13.95	300.61	595.42	28.68	-48.48	56.33	3.00	3.00	0.00	
700.00	16.95	300.61	691.79	42.25	-71.40	82.97	3.00	3.00	0.00	
800.00	19.95	300.61	786.64	58.36	-98.64	114.61	3.00	3.00	0.00	
900.00	22.95	300.61	879.71	76.98	-130.10	151.17	3.00	3.00	0.00	
1,000.00	25.95	300.61	970.73	98.06	-165.72	192.56	3.00	3.00	0.00	
1,058.02	27.69	300.61	1,022.51	111.39	-188.25	218.74	3.00	3.00	0.00	
1,100.00	27.69	300.61	1,059.68	121.32	-205.04	238.24	0.00	0.00	0.00	
9 5/8" @ 1100' MD										
1,200.00	27.69	300.61	1,148.22	144.99	-245.03	284.71	0.00	0.00	0.00	
1,300.00	27.69	300.61	1,236.77	168.65	-285.02	331.18	0.00	0.00	0.00	
1,400.00	27.69	300.61	1,325.32	192.32	-325.02	377.65	0.00	0.00	0.00	
1,500.00	27.69	300.61	1,413.87	215.98	-365.01	424.12	0.00	0.00	0.00	
1,600.00	27.69	300.61	1,502.41	239.65	-405.00	470.59	0.00	0.00	0.00	
1,700.00	27.69	300.61	1,590.96	263.31	-445.00	517.06	0.00	0.00	0.00	
1,800.00	27.69	300.61	1,679.51	286.97	-484.99	563.53	0.00	0.00	0.00	
1,900.00	27.69	300.61	1,768.05	310.64	-524.98	610.00	0.00	0.00	0.00	
2,000.00	27.69	300.61	1,856.60	334.30	-564.98	656.47	0.00	0.00	0.00	
2,100.00	27.69	300.61	1,945.15	357.97	-604.97	702.94	0.00	0.00	0.00	
2,200.00	27.69	300.61	2,033.69	381.63	-644.96	749.41	0.00	0.00	0.00	
2,300.00	27.69	300.61	2,122.24	405.30	-684.95	795.88	0.00	0.00	0.00	
2,400.00	27.69	300.61	2,210.79	428.96	-724.95	842.35	0.00	0.00	0.00	
2,500.00	27.69	300.61	2,299.33	452.62	-764.94	888.82	0.00	0.00	0.00	
2,600.00	27.69	300.61	2,387.88	476.29	-804.93	935.29	0.00	0.00	0.00	
2,700.00	27.69	300.61	2,476.43	499.95	-844.93	981.76	0.00	0.00	0.00	
2,800.00	27.69	300.61	2,564.98	523.62	-884.92	1,028.23	0.00	0.00	0.00	
2,900.00	27.69	300.61	2,653.52	547.28	-924.91	1,074.70	0.00	0.00	0.00	
3,000.00	27.69	300.61	2,742.07	570.95	-964.91	1,121.17	0.00	0.00	0.00	
3,100.00	27.69	300.61	2,830.62	594.61	-1,004.90	1,167.64	0.00	0.00	0.00	
3,200.00	27.69	300.61	2,919.16	618.27	-1,044.89	1,214.11	0.00	0.00	0.00	
3,300.00	27.69	300.61	3,007.71	641.94	-1,084.89	1,260.58	0.00	0.00	0.00	
3,400.00	27.69	300.61	3,096.26	665.60	-1,124.88	1,307.05	0.00	0.00	0.00	
3,500.00	27.69	300.61	3,184.80	689.27	-1,164.87	1,353.52	0.00	0.00	0.00	
3,600.00	27.69	300.61	3,273.35	712.93	-1,204.86	1,399.99	0.00	0.00	0.00	
3,700.00	27.69	300.61	3,361.90	736.60	-1,244.86	1,446.46	0.00	0.00	0.00	
3,800.00	27.69	300.61	3,450.44	760.26	-1,284.85	1,492.93	0.00	0.00	0.00	
3,900.00	27.69	300.61	3,538.99	783.92	-1,324.84	1,539.40	0.00	0.00	0.00	
3,942.92	27.69	300.61	3,577.00	794.08	-1,342.01	1,559.34	0.00	0.00	0.00	
GSAND										
4,000.00	27.69	300.61	3,627.54	807.59	-1,364.84	1,585.87	0.00	0.00	0.00	
4,100.00	27.69	300.61	3,716.09	831.25	-1,404.83	1,632.34	0.00	0.00	0.00	
4,200.00	27.69	300.61	3,804.63	854.92	-1,444.82	1,678.81	0.00	0.00	0.00	
4,300.00	27.69	300.61	3,893.18	878.58	-1,484.82	1,725.28	0.00	0.00	0.00	
4,400.00	27.69	300.61	3,981.73	902.25	-1,524.81	1,771.75	0.00	0.00	0.00	
4,497.42	27.69	300.61	4,067.99	925.30	-1,563.77	1,817.02	0.00	0.00	0.00	
4,500.00	27.65	300.61	4,070.27	925.91	-1,564.80	1,818.22	1.50	-1.50	0.00	

<b>Database:</b>	Grand Junction District	<b>Local Co-ordinate Reference:</b>	Well SR 412-12 - Slot SR 412-12 (A2)
<b>Company:</b>	TEP Rocky Mountain LLC	<b>TVD Reference:</b>	GL 7478' & RKB 24' @ 7502.00usft (H&P 318)
<b>Project:</b>	Garfield County, CO NAD83	<b>MD Reference:</b>	GL 7478' & RKB 24' @ 7502.00usft (H&P 318)
<b>Site:</b>	SR 23-12 Pad	<b>North Reference:</b>	True
<b>Well:</b>	SR 412-12	<b>Survey Calculation Method:</b>	Minimum Curvature
<b>Wellbore:</b>	OH		
<b>Design:</b>	Plan #1 28Oct2016 jcsdi		

Planned Survey									
Measured Depth (usft)	Inclination (°)	Azimuth (°)	Vertical Depth (usft)	+N/-S (usft)	+E/-W (usft)	Vertical Section (usft)	Dogleg Rate (°/100usft)	Build Rate (°/100usft)	Turn Rate (°/100usft)
4,600.00	26.15	300.61	4,159.45	948.95	-1,603.74	1,863.46	1.50	-1.50	0.00
4,700.00	24.65	300.61	4,249.78	970.79	-1,640.66	1,906.36	1.50	-1.50	0.00
4,800.00	23.15	300.61	4,341.20	991.43	-1,675.53	1,946.87	1.50	-1.50	0.00
4,900.00	21.65	300.61	4,433.65	1,010.83	-1,708.32	1,984.98	1.50	-1.50	0.00
5,000.00	20.15	300.61	4,527.07	1,029.00	-1,739.03	2,020.66	1.50	-1.50	0.00
5,100.00	18.65	300.61	4,621.39	1,045.92	-1,767.61	2,053.88	1.50	-1.50	0.00
5,200.00	17.15	300.61	4,716.54	1,061.57	-1,794.07	2,084.61	1.50	-1.50	0.00
5,300.00	15.65	300.61	4,812.47	1,075.95	-1,818.37	2,112.85	1.50	-1.50	0.00
5,400.00	14.15	300.61	4,909.10	1,089.04	-1,840.50	2,138.57	1.50	-1.50	0.00
5,500.00	12.65	300.61	5,006.38	1,100.85	-1,860.45	2,161.74	1.50	-1.50	0.00
5,600.00	11.15	300.61	5,104.23	1,111.35	-1,878.20	2,182.37	1.50	-1.50	0.00
5,700.00	9.65	300.61	5,202.58	1,120.54	-1,893.74	2,200.42	1.50	-1.50	0.00
5,800.00	8.15	300.61	5,301.37	1,128.42	-1,907.05	2,215.89	1.50	-1.50	0.00
5,886.37	6.86	300.61	5,387.00	1,134.17	-1,916.76	2,227.17	1.50	-1.50	0.00
<b>LOWER WASATCH</b>									
5,900.00	6.65	300.61	5,400.54	1,134.98	-1,918.14	2,228.78	1.50	-1.50	0.00
6,000.00	5.15	300.61	5,500.00	1,140.22	-1,926.99	2,239.06	1.50	-1.50	0.00
6,100.00	3.65	300.61	5,599.70	1,144.13	-1,933.59	2,246.73	1.50	-1.50	0.00
6,200.00	2.15	300.61	5,699.57	1,146.71	-1,937.95	2,251.80	1.50	-1.50	0.00
6,243.45	1.50	300.61	5,743.00	1,147.41	-1,939.14	2,253.18	1.50	-1.50	0.00
<b>OCRK</b>									
6,300.00	0.65	300.61	5,799.54	1,147.95	-1,940.06	2,254.24	1.50	-1.50	0.00
6,343.46	0.00	0.00	5,843.00	1,148.08	-1,940.27	2,254.49	1.50	-1.50	0.00
<b>UMVRD - SR 412-12 BTV</b>									
6,400.00	0.00	0.00	5,899.54	1,148.08	-1,940.27	2,254.49	0.00	0.00	0.00
6,500.00	0.00	0.00	5,999.54	1,148.08	-1,940.27	2,254.49	0.00	0.00	0.00
6,600.00	0.00	0.00	6,099.54	1,148.08	-1,940.27	2,254.49	0.00	0.00	0.00
6,700.00	0.00	0.00	6,199.54	1,148.08	-1,940.27	2,254.49	0.00	0.00	0.00
6,800.00	0.00	0.00	6,299.54	1,148.08	-1,940.27	2,254.49	0.00	0.00	0.00
6,900.00	0.00	0.00	6,399.54	1,148.08	-1,940.27	2,254.49	0.00	0.00	0.00
7,000.00	0.00	0.00	6,499.54	1,148.08	-1,940.27	2,254.49	0.00	0.00	0.00
7,100.00	0.00	0.00	6,599.54	1,148.08	-1,940.27	2,254.49	0.00	0.00	0.00
7,200.00	0.00	0.00	6,699.54	1,148.08	-1,940.27	2,254.49	0.00	0.00	0.00
7,300.00	0.00	0.00	6,799.54	1,148.08	-1,940.27	2,254.49	0.00	0.00	0.00
7,400.00	0.00	0.00	6,899.54	1,148.08	-1,940.27	2,254.49	0.00	0.00	0.00
7,500.00	0.00	0.00	6,999.54	1,148.08	-1,940.27	2,254.49	0.00	0.00	0.00
7,600.00	0.00	0.00	7,099.54	1,148.08	-1,940.27	2,254.49	0.00	0.00	0.00
7,700.00	0.00	0.00	7,199.54	1,148.08	-1,940.27	2,254.49	0.00	0.00	0.00
7,800.00	0.00	0.00	7,299.54	1,148.08	-1,940.27	2,254.49	0.00	0.00	0.00
7,900.00	0.00	0.00	7,399.54	1,148.08	-1,940.27	2,254.49	0.00	0.00	0.00
7,902.46	0.00	0.00	7,402.00	1,148.08	-1,940.27	2,254.49	0.00	0.00	0.00
<b>KMVGAS</b>									
8,000.00	0.00	0.00	7,499.54	1,148.08	-1,940.27	2,254.49	0.00	0.00	0.00
8,100.00	0.00	0.00	7,599.54	1,148.08	-1,940.27	2,254.49	0.00	0.00	0.00
8,200.00	0.00	0.00	7,699.54	1,148.08	-1,940.27	2,254.49	0.00	0.00	0.00
8,300.00	0.00	0.00	7,799.54	1,148.08	-1,940.27	2,254.49	0.00	0.00	0.00
8,400.00	0.00	0.00	7,899.54	1,148.08	-1,940.27	2,254.49	0.00	0.00	0.00
8,500.00	0.00	0.00	7,999.54	1,148.08	-1,940.27	2,254.49	0.00	0.00	0.00
8,600.00	0.00	0.00	8,099.54	1,148.08	-1,940.27	2,254.49	0.00	0.00	0.00
8,700.00	0.00	0.00	8,199.54	1,148.08	-1,940.27	2,254.49	0.00	0.00	0.00
8,800.00	0.00	0.00	8,299.54	1,148.08	-1,940.27	2,254.49	0.00	0.00	0.00
8,900.00	0.00	0.00	8,399.54	1,148.08	-1,940.27	2,254.49	0.00	0.00	0.00

<b>Database:</b>	Grand Junction District	<b>Local Co-ordinate Reference:</b>	Well SR 412-12 - Slot SR 412-12 (A2)
<b>Company:</b>	TEP Rocky Mountain LLC	<b>TVD Reference:</b>	GL 7478' & RKB 24' @ 7502.00usft (H&P 318)
<b>Project:</b>	Garfield County, CO NAD83	<b>MD Reference:</b>	GL 7478' & RKB 24' @ 7502.00usft (H&P 318)
<b>Site:</b>	SR 23-12 Pad	<b>North Reference:</b>	True
<b>Well:</b>	SR 412-12	<b>Survey Calculation Method:</b>	Minimum Curvature
<b>Wellbore:</b>	OH		
<b>Design:</b>	Plan #1 28Oct2016 jcsdi		

Planned Survey										
Measured Depth (usft)	Inclination (°)	Azimuth (°)	Vertical Depth (usft)	+N/-S (usft)	+E/-W (usft)	Vertical Section (usft)	Dogleg Rate (°/100usft)	Build Rate (°/100usft)	Turn Rate (°/100usft)	
9,000.00	0.00	0.00	8,499.54	1,148.08	-1,940.27	2,254.49	0.00	0.00	0.00	
9,023.46	0.00	0.00	8,523.00	1,148.08	-1,940.27	2,254.49	0.00	0.00	0.00	
CME0										
9,100.00	0.00	0.00	8,599.54	1,148.08	-1,940.27	2,254.49	0.00	0.00	0.00	
9,200.00	0.00	0.00	8,699.54	1,148.08	-1,940.27	2,254.49	0.00	0.00	0.00	
9,300.00	0.00	0.00	8,799.54	1,148.08	-1,940.27	2,254.49	0.00	0.00	0.00	
9,400.00	0.00	0.00	8,899.54	1,148.08	-1,940.27	2,254.49	0.00	0.00	0.00	
9,500.00	0.00	0.00	8,999.54	1,148.08	-1,940.27	2,254.49	0.00	0.00	0.00	
9,600.00	0.00	0.00	9,099.54	1,148.08	-1,940.27	2,254.49	0.00	0.00	0.00	
9,700.00	0.00	0.00	9,199.54	1,148.08	-1,940.27	2,254.49	0.00	0.00	0.00	
9,800.00	0.00	0.00	9,299.54	1,148.08	-1,940.27	2,254.49	0.00	0.00	0.00	
9,867.46	0.00	0.00	9,367.00	1,148.08	-1,940.27	2,254.49	0.00	0.00	0.00	
RLNS										
9,900.00	0.00	0.00	9,399.54	1,148.08	-1,940.27	2,254.49	0.00	0.00	0.00	
10,000.00	0.00	0.00	9,499.54	1,148.08	-1,940.27	2,254.49	0.00	0.00	0.00	
10,100.00	0.00	0.00	9,599.54	1,148.08	-1,940.27	2,254.49	0.00	0.00	0.00	
10,200.00	0.00	0.00	9,699.54	1,148.08	-1,940.27	2,254.49	0.00	0.00	0.00	
10,211.46	0.00	0.00	9,711.00	1,148.08	-1,940.27	2,254.49	0.00	0.00	0.00	
SR 412-12 PBHL										

Design Targets										
Target Name	Dip Angle (°)	Dip Dir. (°)	TVD (usft)	+N/-S (usft)	+E/-W (usft)	Northing (usft)	Easting (usft)	Latitude	Longitude	
- hit/miss target										
- Shape										
SR 412-12 BTV	0.00	0.00	5,843.00	1,148.08	-1,940.27	1,598,904.00	2,338,322.30	39.4543293	-107.8435806	
- plan hits target center										
- Circle (radius 25.00)										
SR 412-12 PBHL	0.00	0.00	9,711.00	1,148.08	-1,940.27	1,598,904.00	2,338,322.30	39.4543293	-107.8435806	
- plan hits target center										
- Point										

Casing Points					
Measured Depth (usft)	Vertical Depth (usft)	Name	Casing Diameter (in)	Hole Diameter (in)	
1,100.00	1,059.68	9 5/8" @ 1100' MD	9.62	9.62	

<b>Database:</b>	Grand Junction District	<b>Local Co-ordinate Reference:</b>	Well SR 412-12 - Slot SR 412-12 (A2)
<b>Company:</b>	TEP Rocky Mountain LLC	<b>TVD Reference:</b>	GL 7478' & RKB 24' @ 7502.00usft (H&P 318)
<b>Project:</b>	Garfield County, CO NAD83	<b>MD Reference:</b>	GL 7478' & RKB 24' @ 7502.00usft (H&P 318)
<b>Site:</b>	SR 23-12 Pad	<b>North Reference:</b>	True
<b>Well:</b>	SR 412-12	<b>Survey Calculation Method:</b>	Minimum Curvature
<b>Wellbore:</b>	OH		
<b>Design:</b>	Plan #1 28Oct2016 jcsdi		

Formations						
Measured Depth (usft)	Vertical Depth (usft)	Name	Lithology	Dip (°)	Dip Direction (°)	
3,942.92	3,577.00	GSAND		0.00	0.00	
5,886.37	5,387.00	LOWER WASATCH		0.00	0.00	
6,243.45	5,743.00	OCRK		0.00	0.00	
6,343.46	5,843.00	UMVRD		0.00	0.00	
7,902.46	7,402.00	KMVGAS		0.00	0.00	
9,023.46	8,523.00	CMEO		0.00	0.00	
9,867.46	9,367.00	RLNS		0.00	0.00	