



Xtreme 20

Well:	Castle 0780 6-17		
Field:	North Park		
County:	Jackson, CO		
Surface:	337' FSL & 133' FWL, Section 9-T07N-R80W		
PBHL:	337' FSL & 133' FWL, Section 9-T07N-R80W		
GL:	8,119'	KB:	8,135'

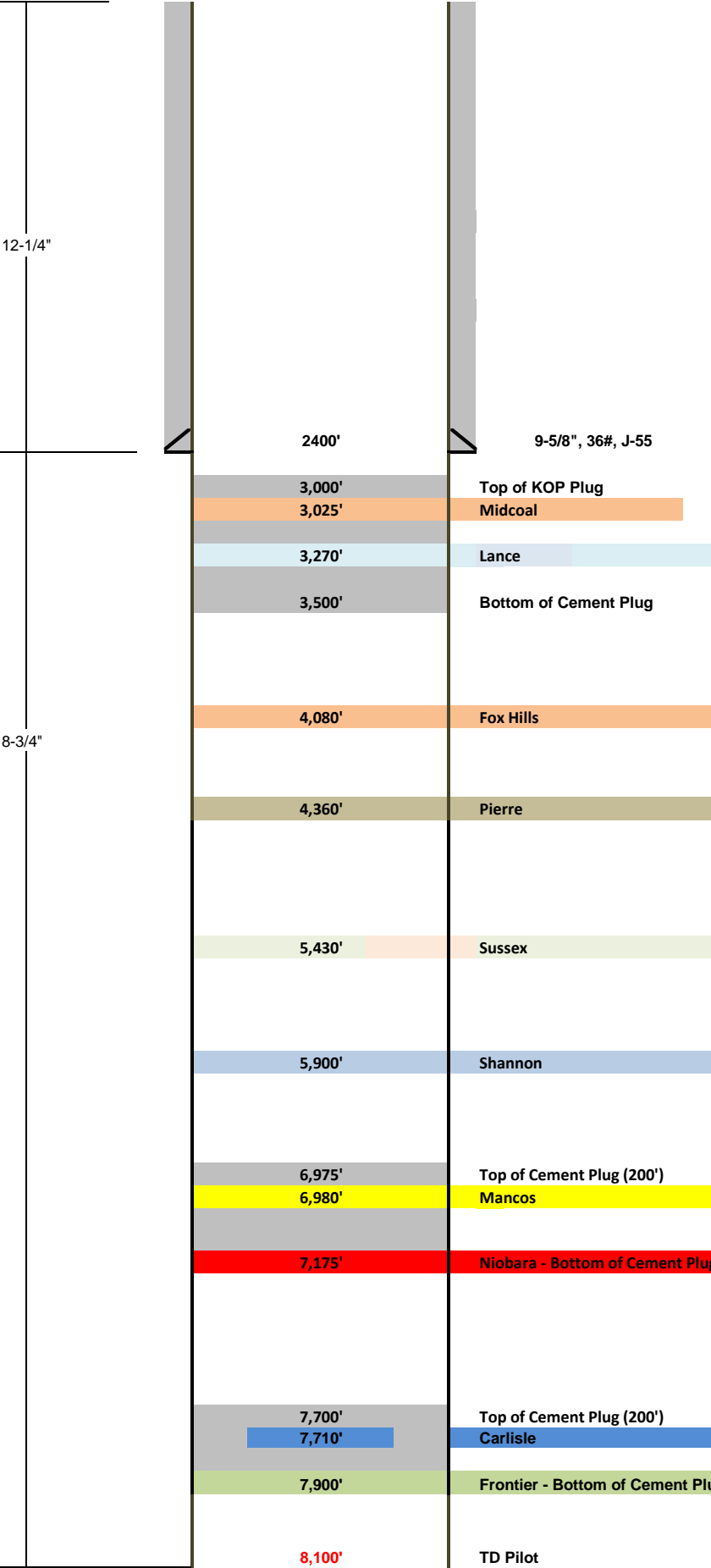
Drilling:	Tyler McCullar
Manager:	Ron Goff
Geology:	Scott Cherry
Completions:	Jake Thomas
Land:	Rick Silman
AFE #:	

Wellhead Equipment	
Tubing Head	11" 5M X 7-1/16" 5M
B-Section	
A-Section	9-5/8" SOW x 11" 5M

Tubular Detail						
	Size	Wt	Grade	Conn	From	To
Surface	9-5/8"	36#	J-55	LT&C	0'	2400'
Intermediate						
Production:						

Logging Program			
	Detail	From	To
Run #1	Triple Combo + Sonic	TD	2,400'

Well Configuration	Vertical
Target Formation	Frontier



Prepared By	Date	Cementing	Logging Company	Mud Loggers	Mud Company	Disposal
Tyler McCullar	10/19/2016	-	-	-	-	-
		-	-	-	-	-
		-	-	-	-	-