

RADIAL CEMENT BOND
GAMMA RAY
CCL

Company	NOBLE ENERGY	Location:	API # : 05-123-12263	Other Services			
Well	GUNTHER 18-02	SHL: 1986' FNL 660' FEL SE/NE					
Field	WATTENBURG						
County	WELD	State	CO				
Permanent Datum	SEC 18 TWP 5N RGE 64W	GL	Elevation				
Log Measured From	KB 10'	KB 10'	4620'	KB. 4630' D.F. 4629' G.L. 4620'			
Drilling Measured From	KB						
Date	12-20-2016						
Run Number	ONE						
Depth Driller	6938'						
Depth Logger	4608'						
Bottom Logged Interval	2599'						
Top Log Interval	SURFACE						
Open Hole Size	7.625"						
Type Fluid	FRESH WATER						
Density / Viscosity	1.0						
Max. Recorded Temp.	134						
Estimated Cement Top	218						
Time Well Ready	NA						
Time Logger on Bottom	NA						
Equipment Number	7770						
Location	GREELEY, CO						
Recorded By	A. STEERMAN						
Witnessed By	KEVIN						
Borehole Record		Tubing Record					
Run Number	Bit	From	To	Size	Weight	From	To
Casing Record	Size		Wgt/Ft	Top	Bottom		
Surface String	8 5/8		24#	SURFACE	309'		
Prot. String							
Production String	4 1/2		11.6#	SURFACE	6938'		
Liner							

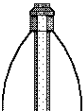
<<< Fold Here >>>

All interpretations are opinions based on inferences from electrical or other measurements and we cannot and do not guarantee the accuracy or correctness of any interpretation, and we shall not, except in the case of gross or willful negligence on our part, be liable or responsible for any loss, costs, damages, or expenses incurred or sustained by anyone resulting from any interpretation made by any of our officers, agents or employees. These interpretations are also subject to our general terms and conditions set out in our current Price Schedule.

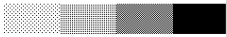

Comments

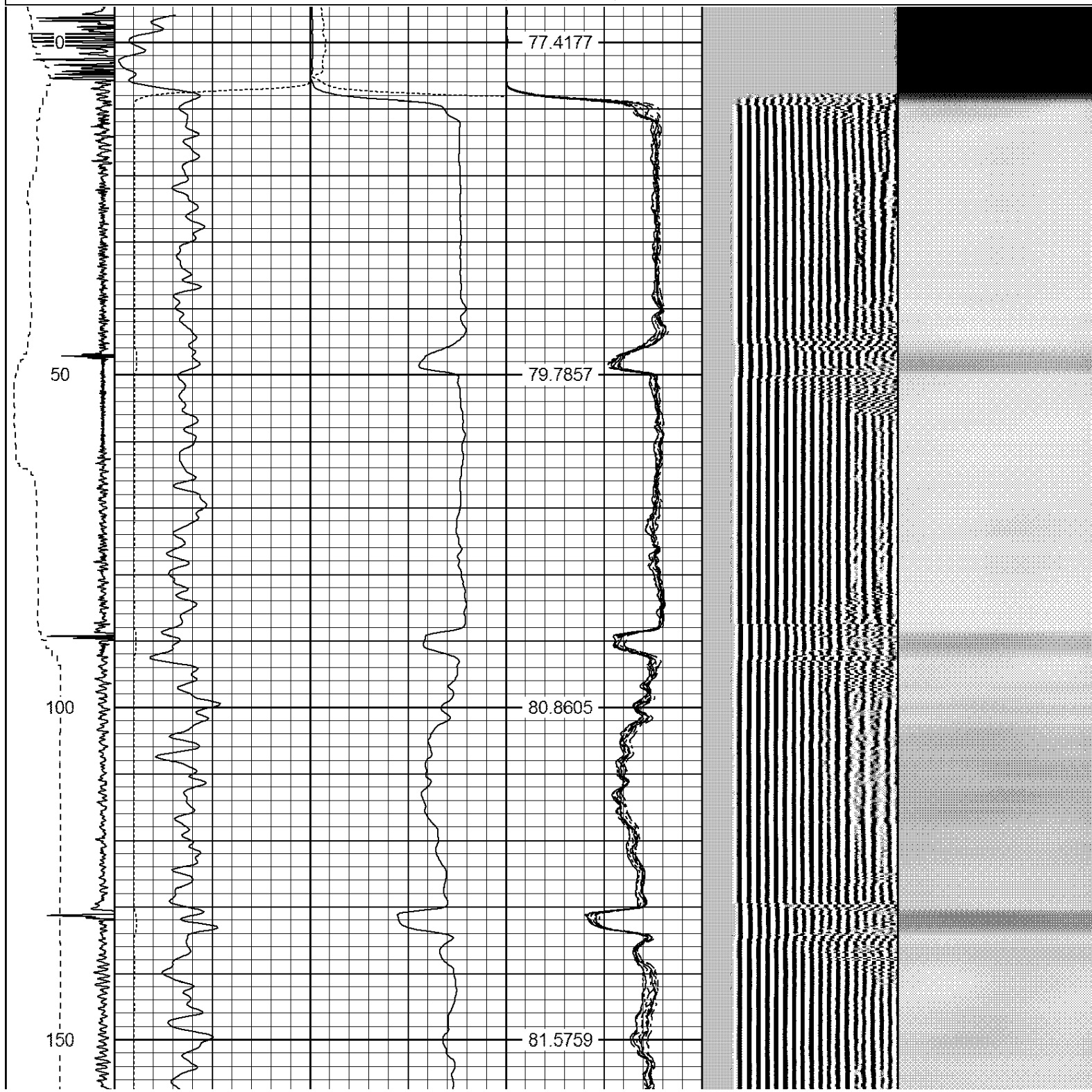
RAN CBL TO VERIFY CEMENT BOND
WELL LOADED BEFORE ARRIVAL

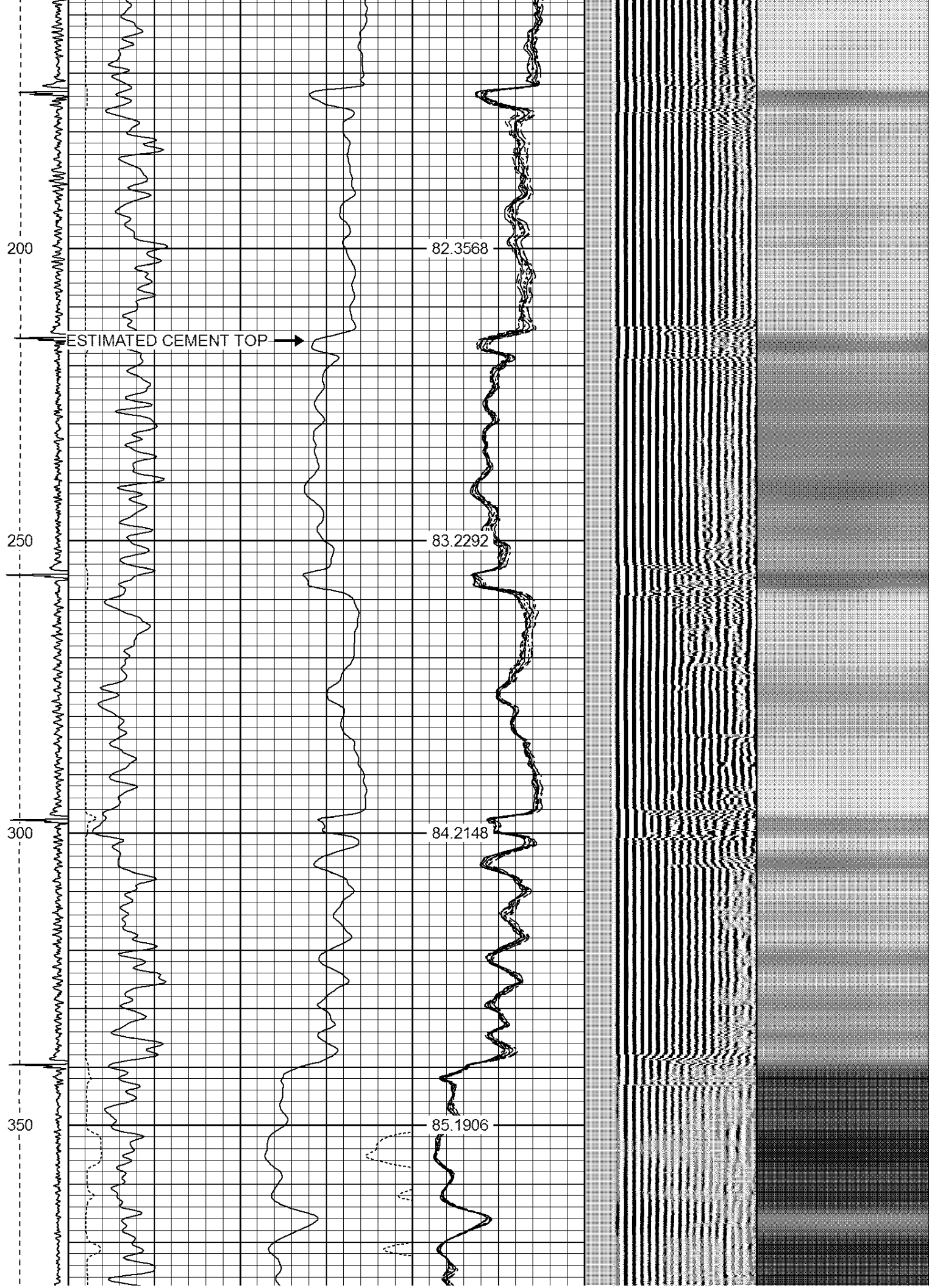
THANK YOU FOR CHOOSING IPS!

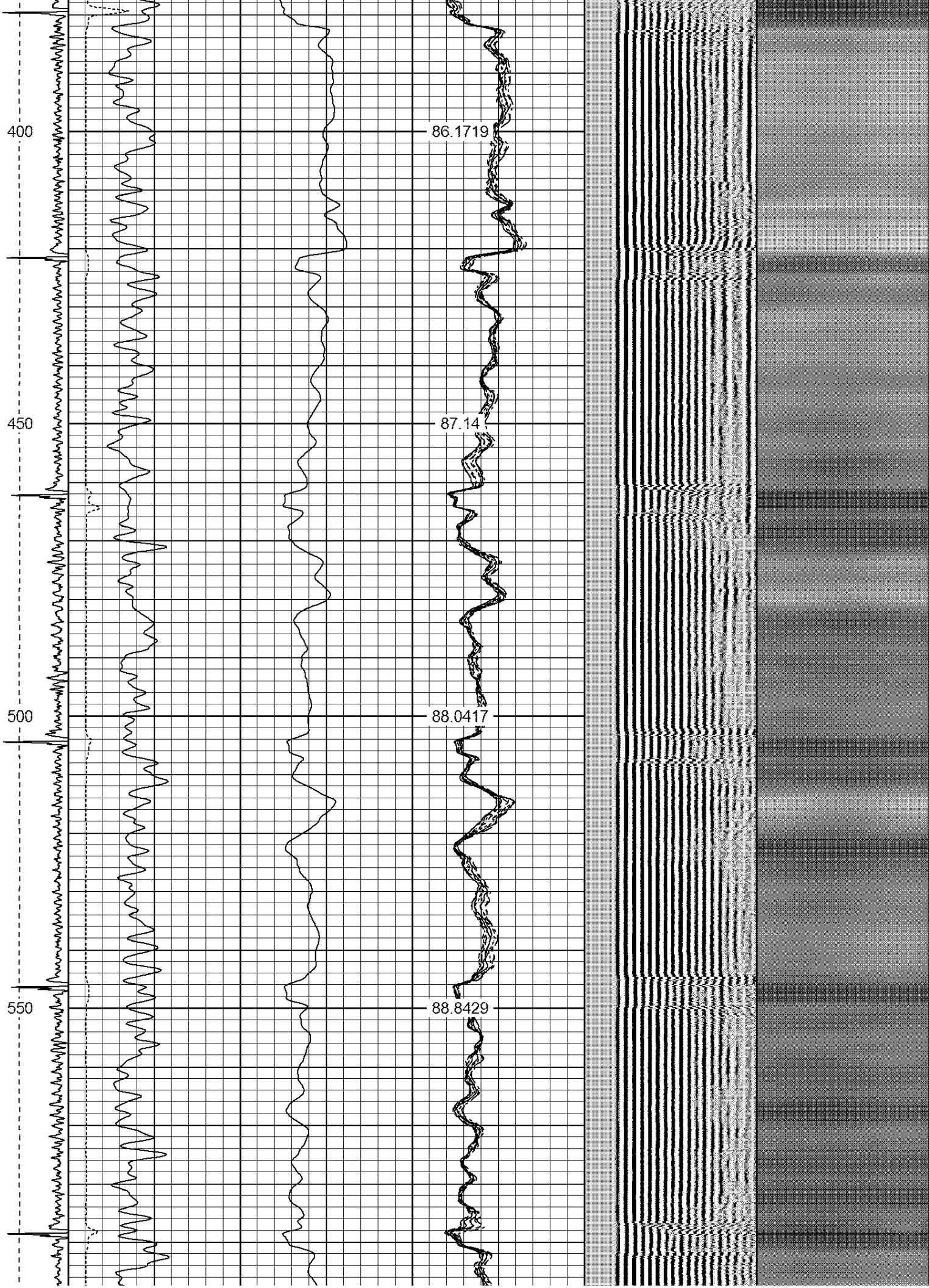
Sensor	Offset (ft)	Schematic	Description	Len (ft)	OD (in)	Wt (lb)
						

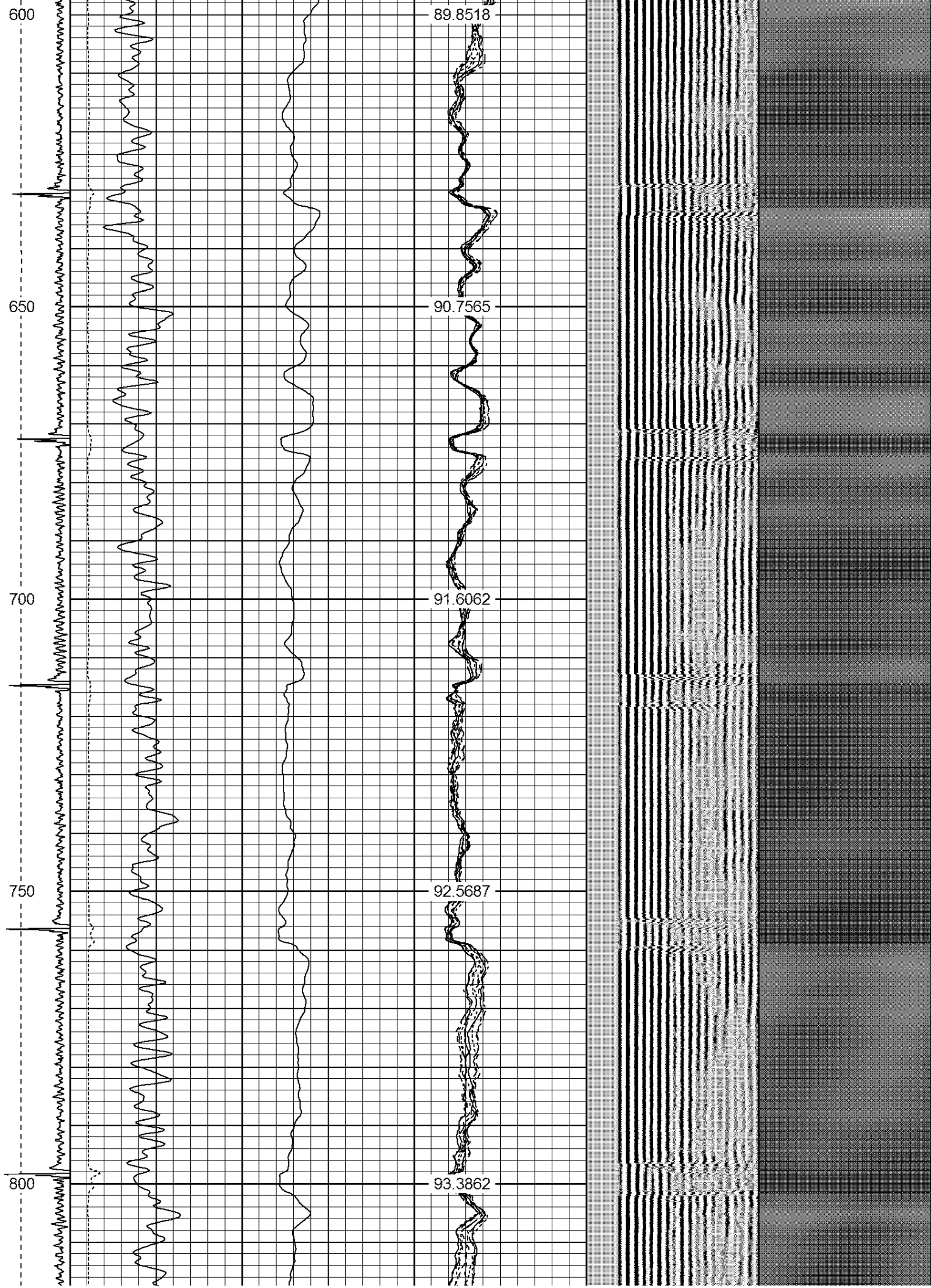
[illegible]

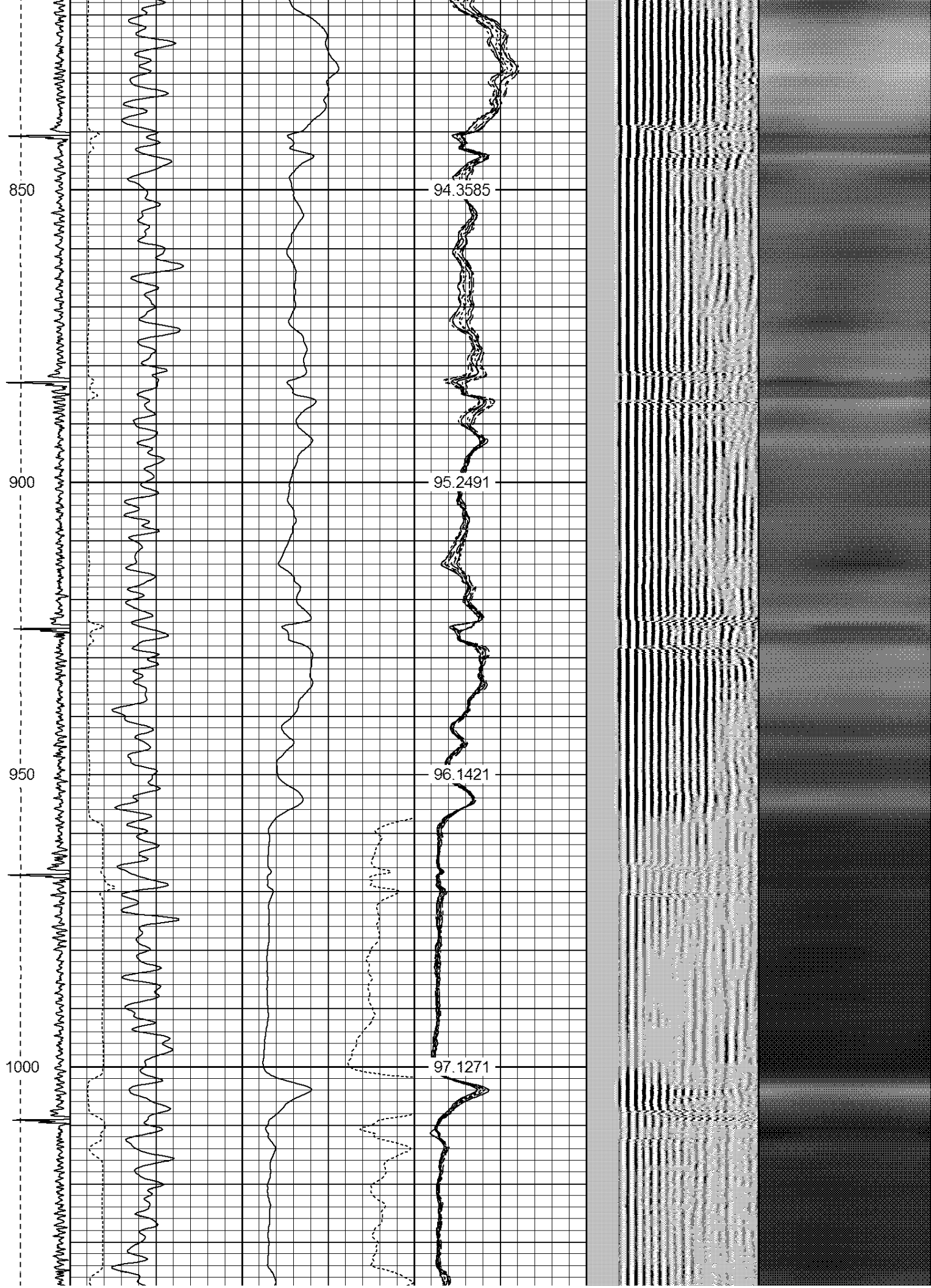
-9	CCL	1	200	TT (usec)	800	0	AMP (mV)	100	0	AMPS1	100	200	VDL	1200	1	Cement Map	8									
LSPD (ft/min)	0		0	GR (GAPI)	200	0	AMPx5 (mV)	20	0	AMPS2	100			100												
	200		200	GR (GAPI)	400				0	AMPS3	100															
0		250							0	AMPS4	100															
									0	AMPS5	100															
									0	AMPS6	100															
									0	AMPS7	100															
									0	AMPS8	100															
									IntTemp																	
									(degF)																	

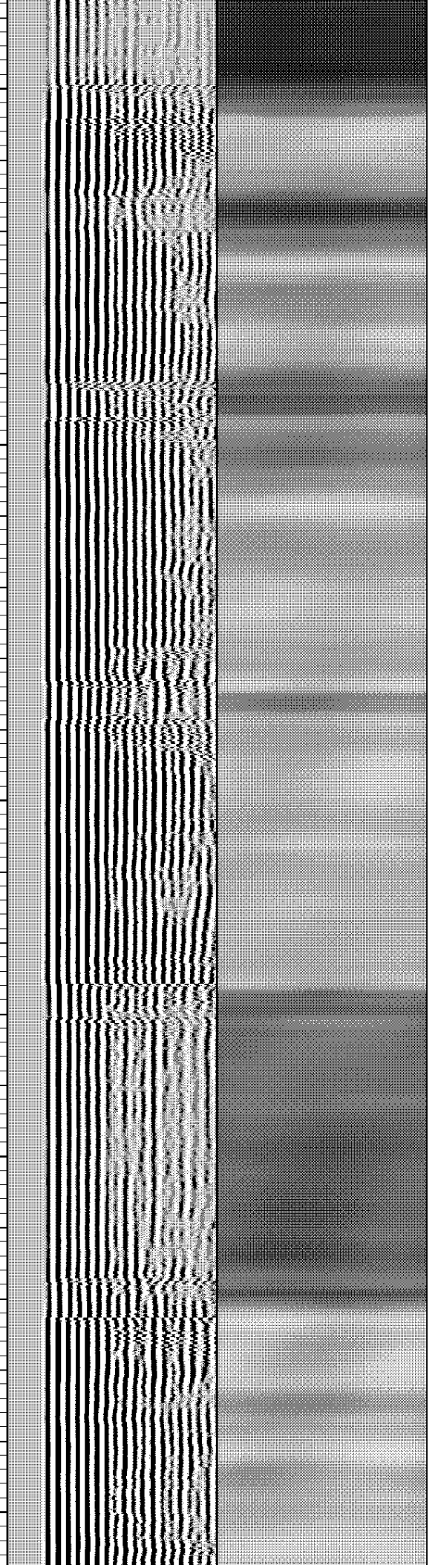
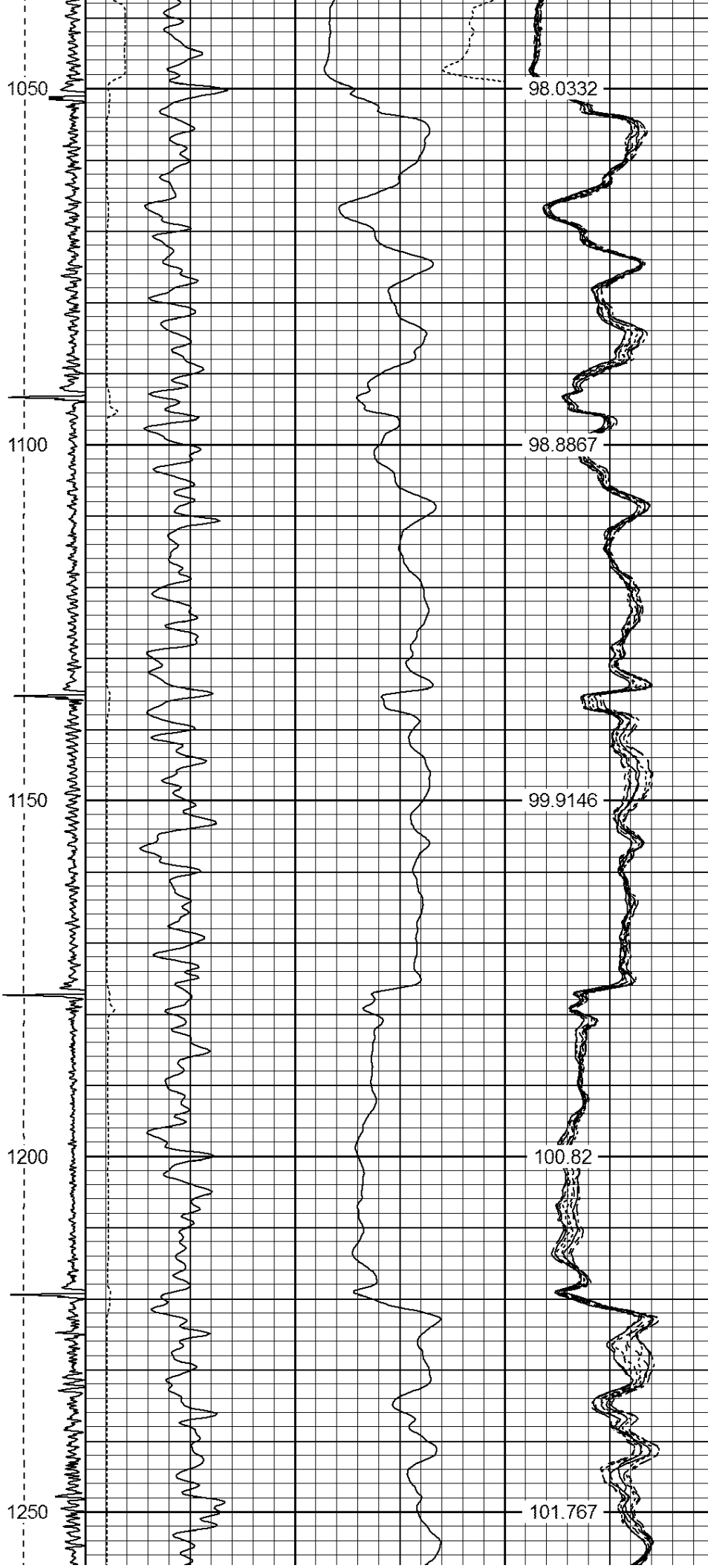


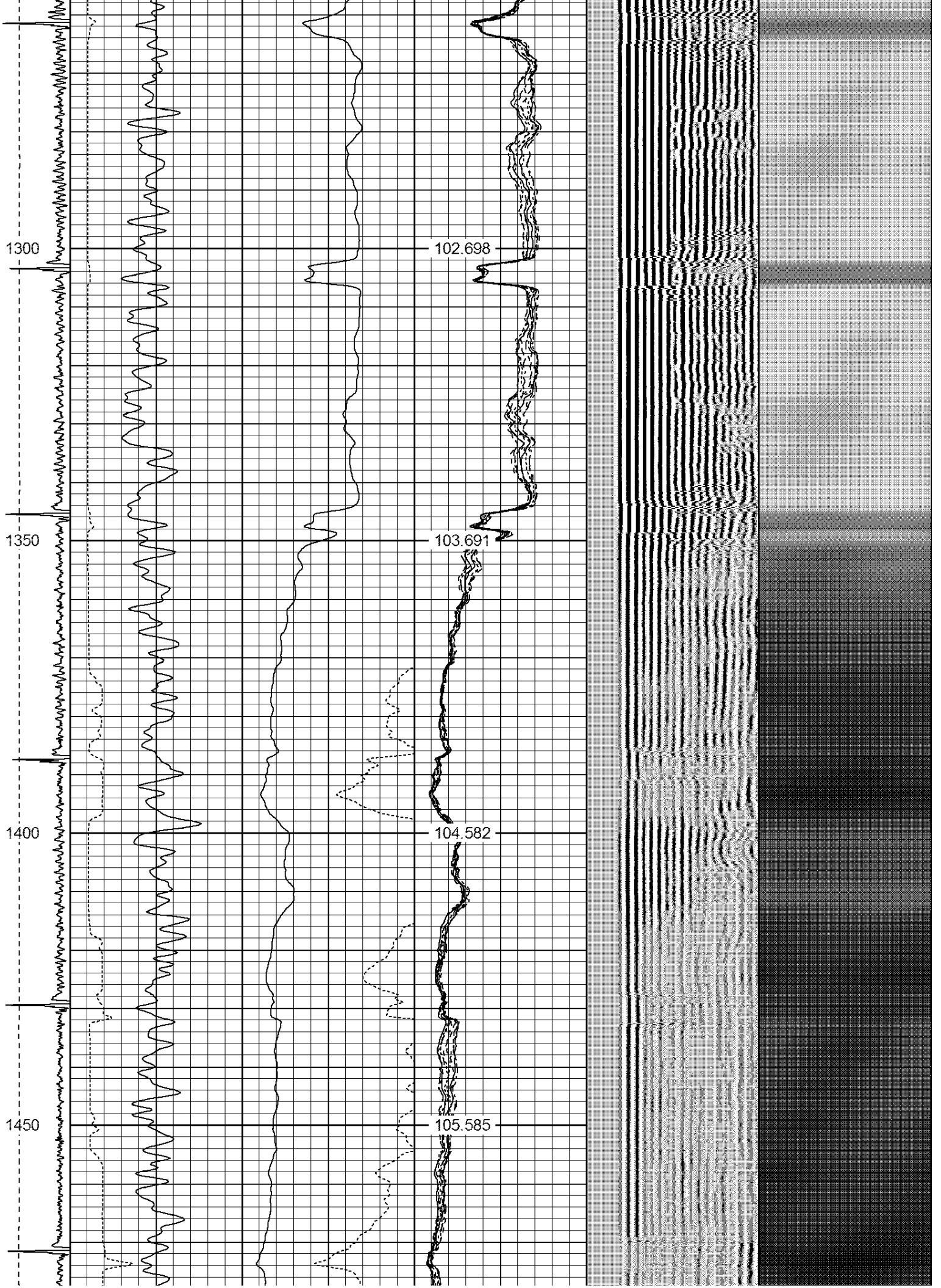


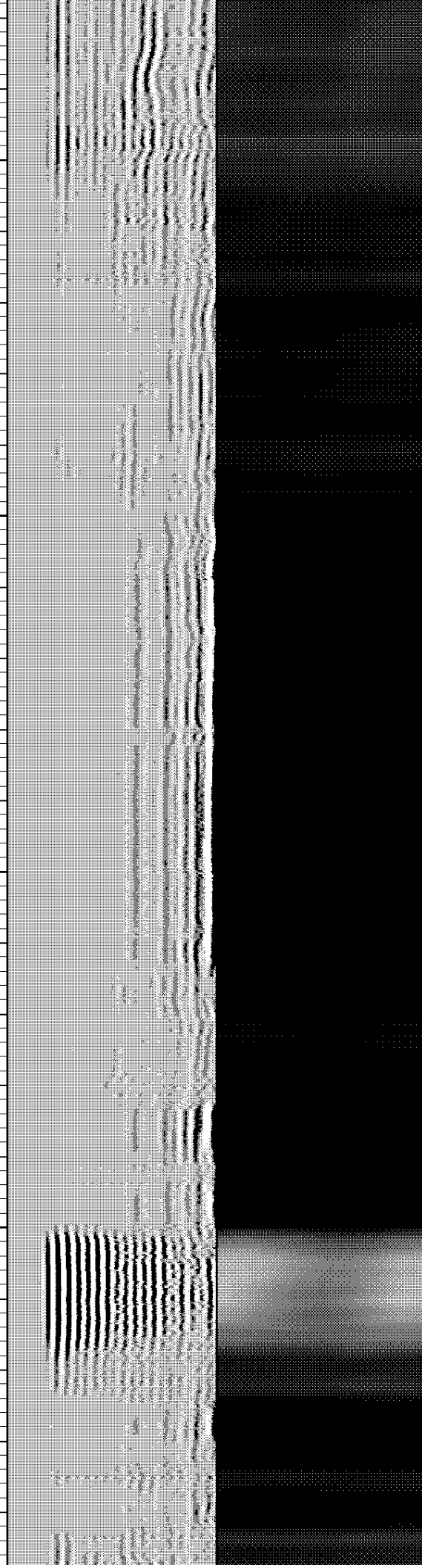
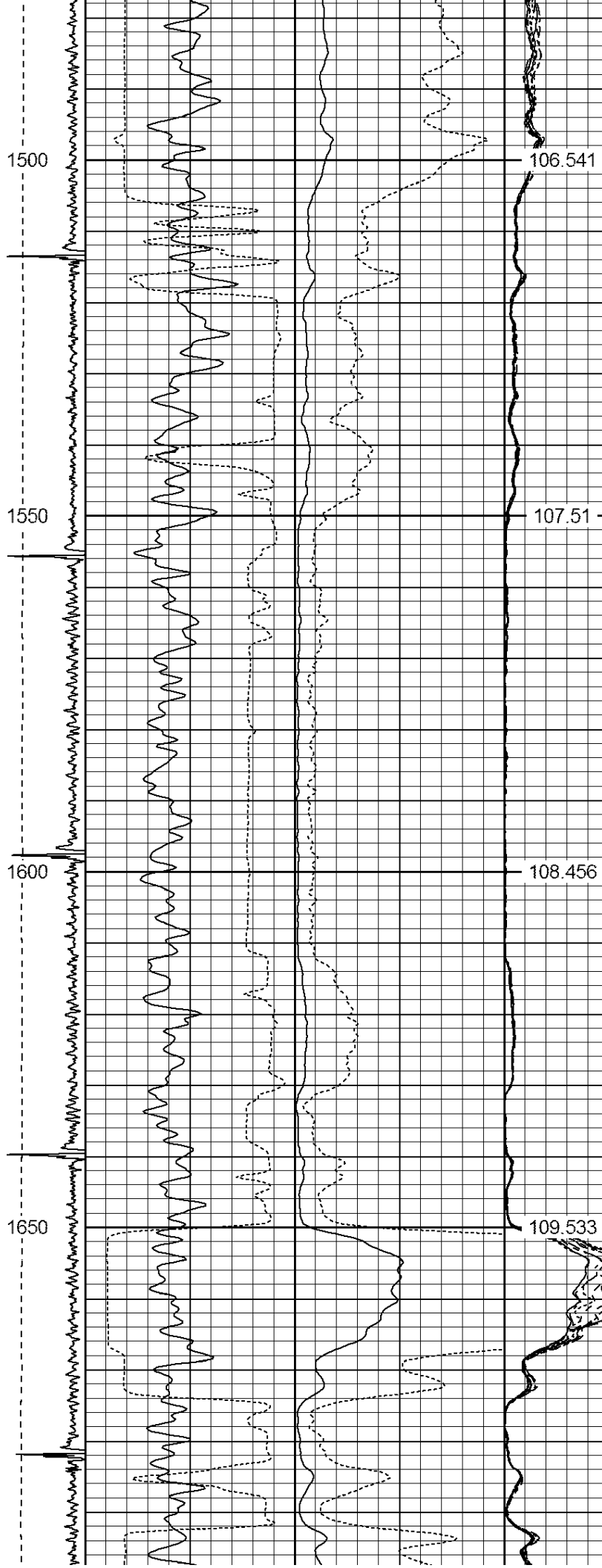


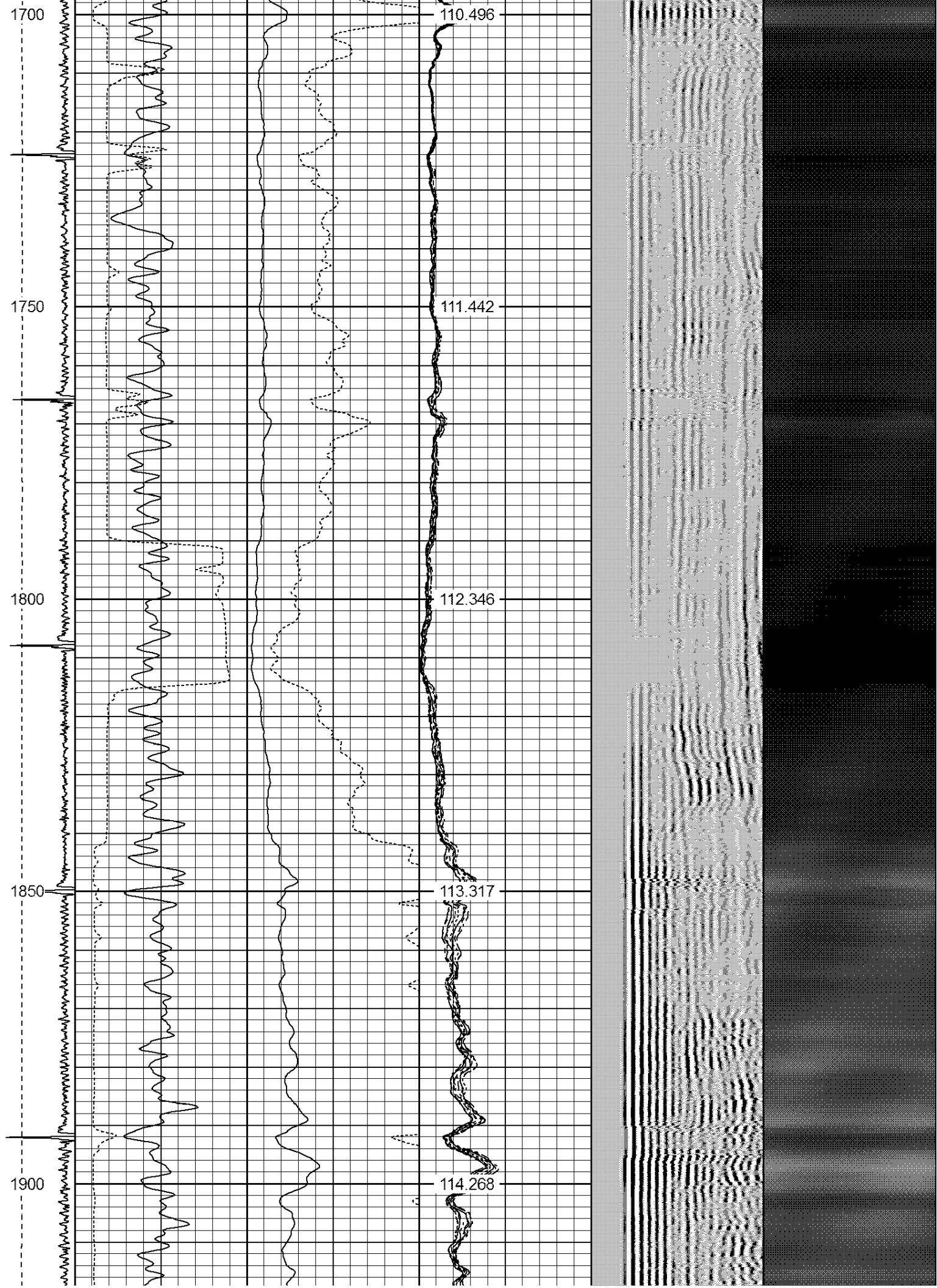


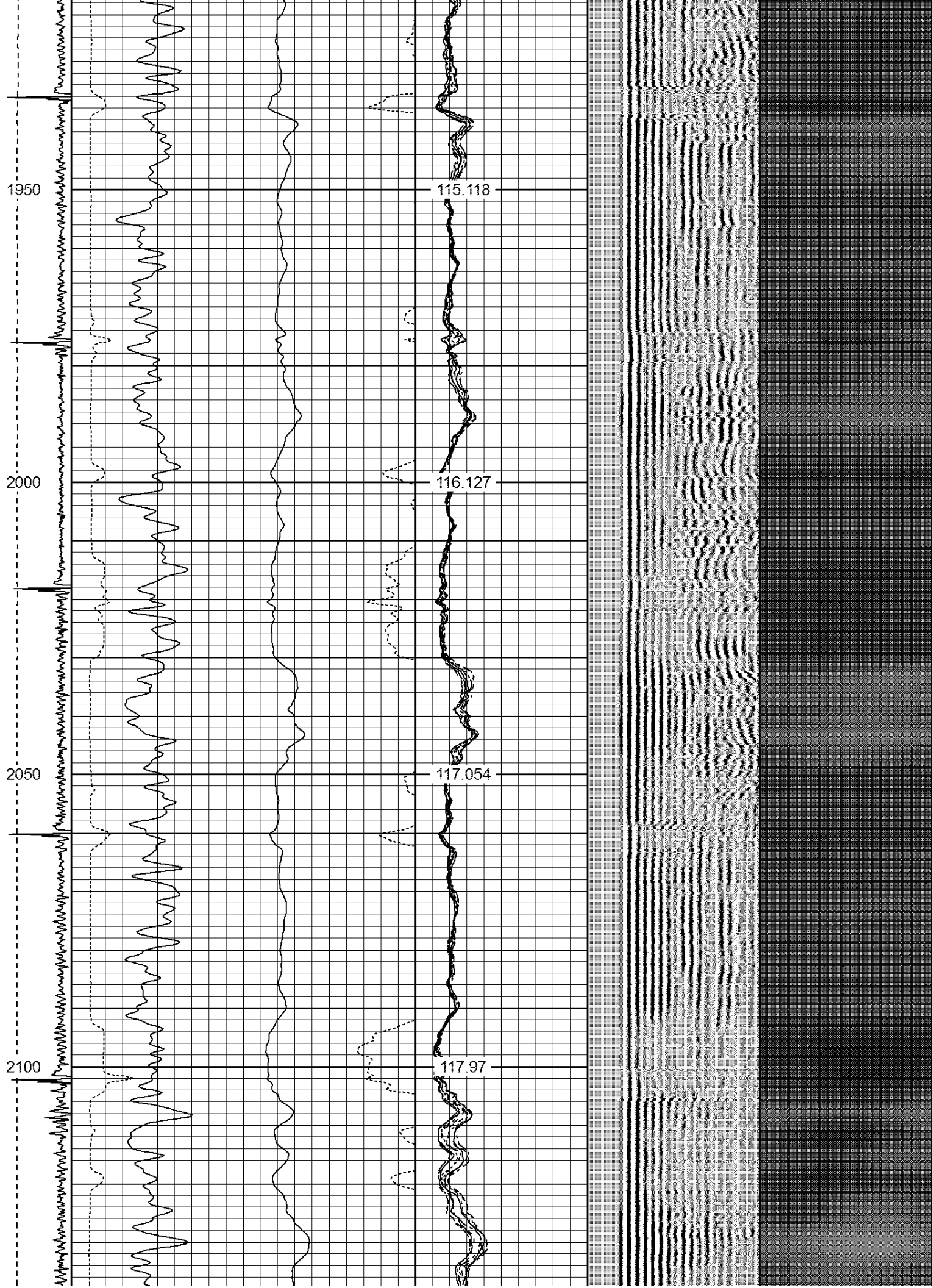


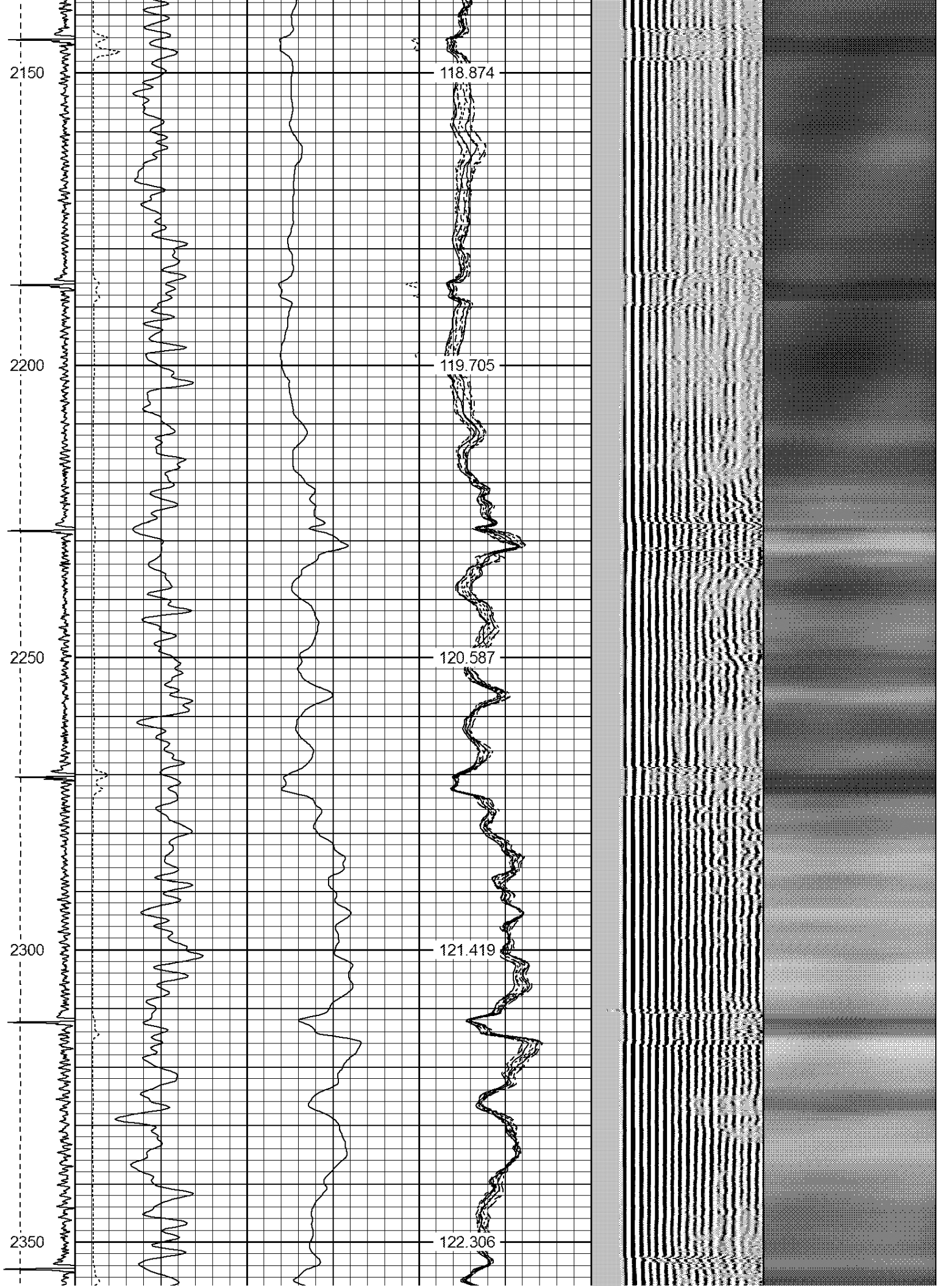


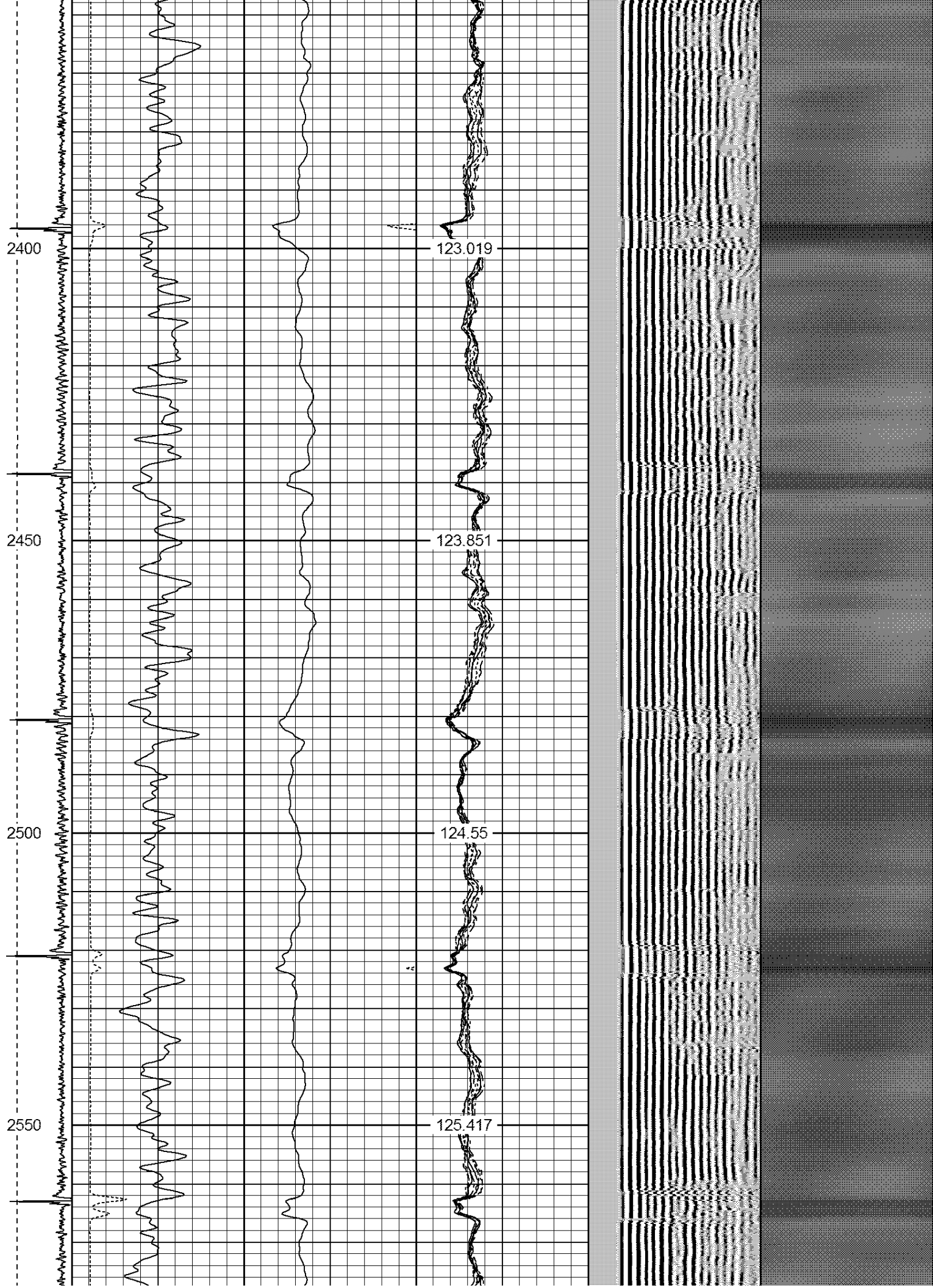












2600

126.134

2650

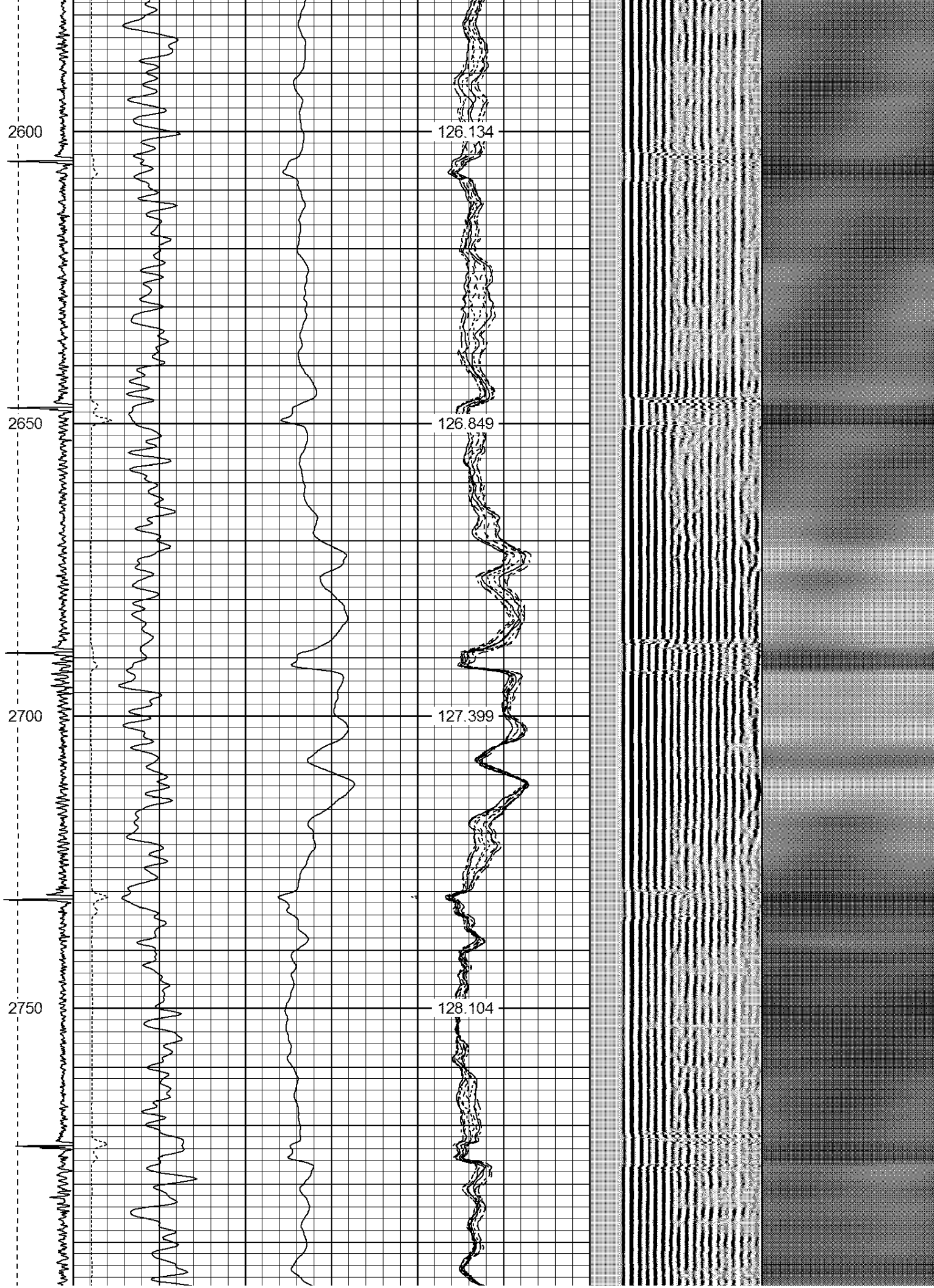
126.849

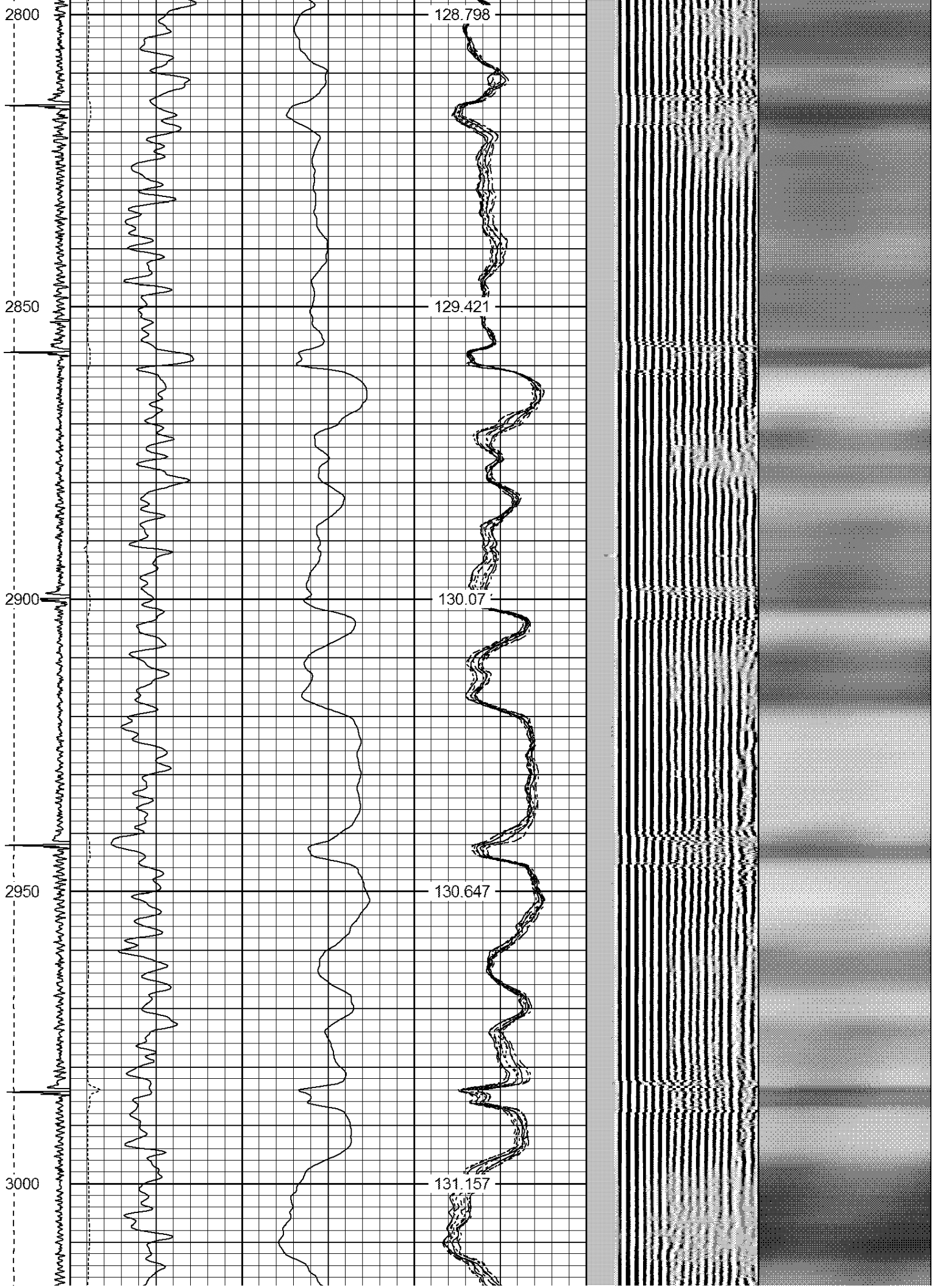
2700

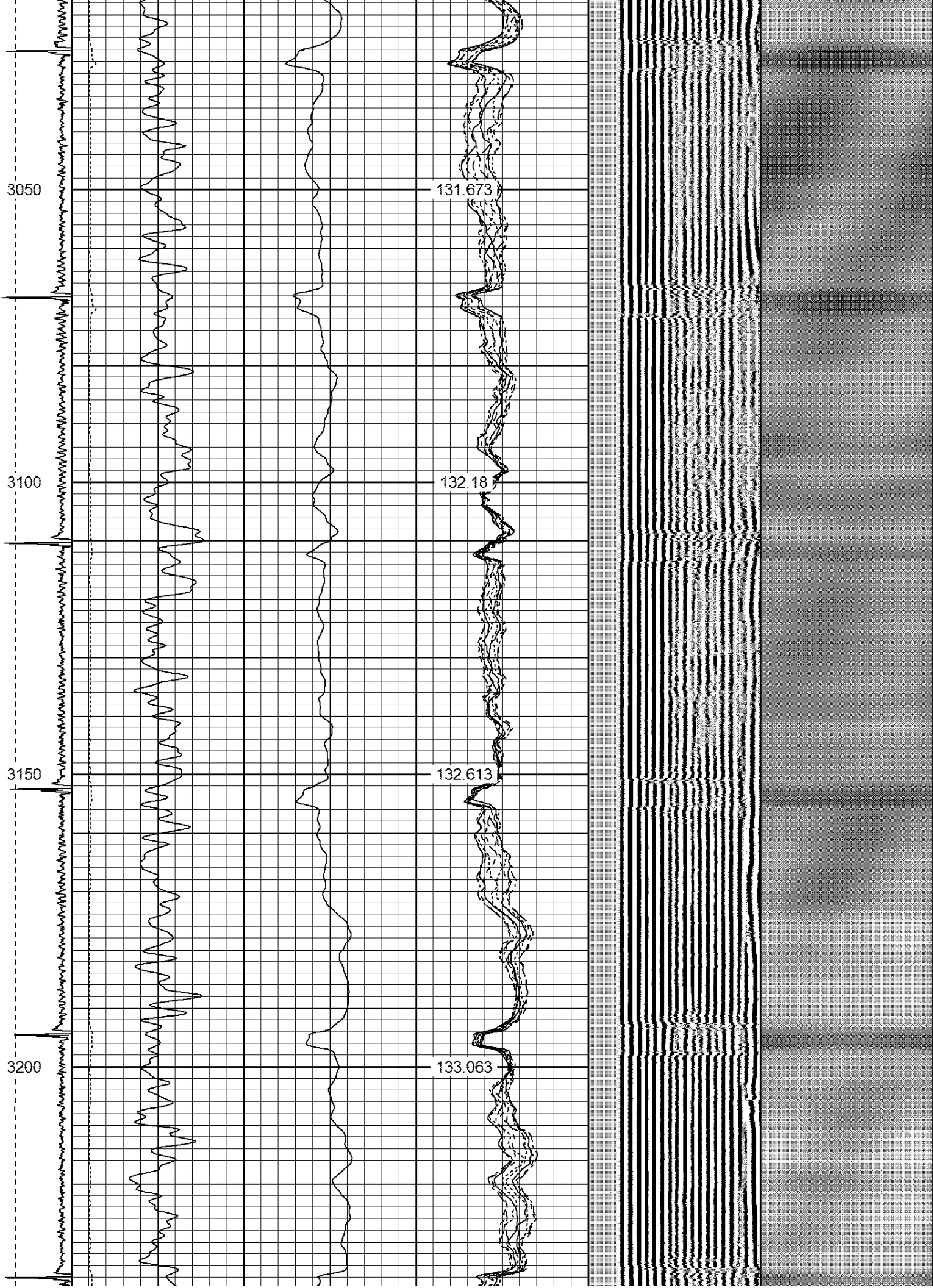
127.399

2750

128.104







3250

133.422

3300

133.724

3350

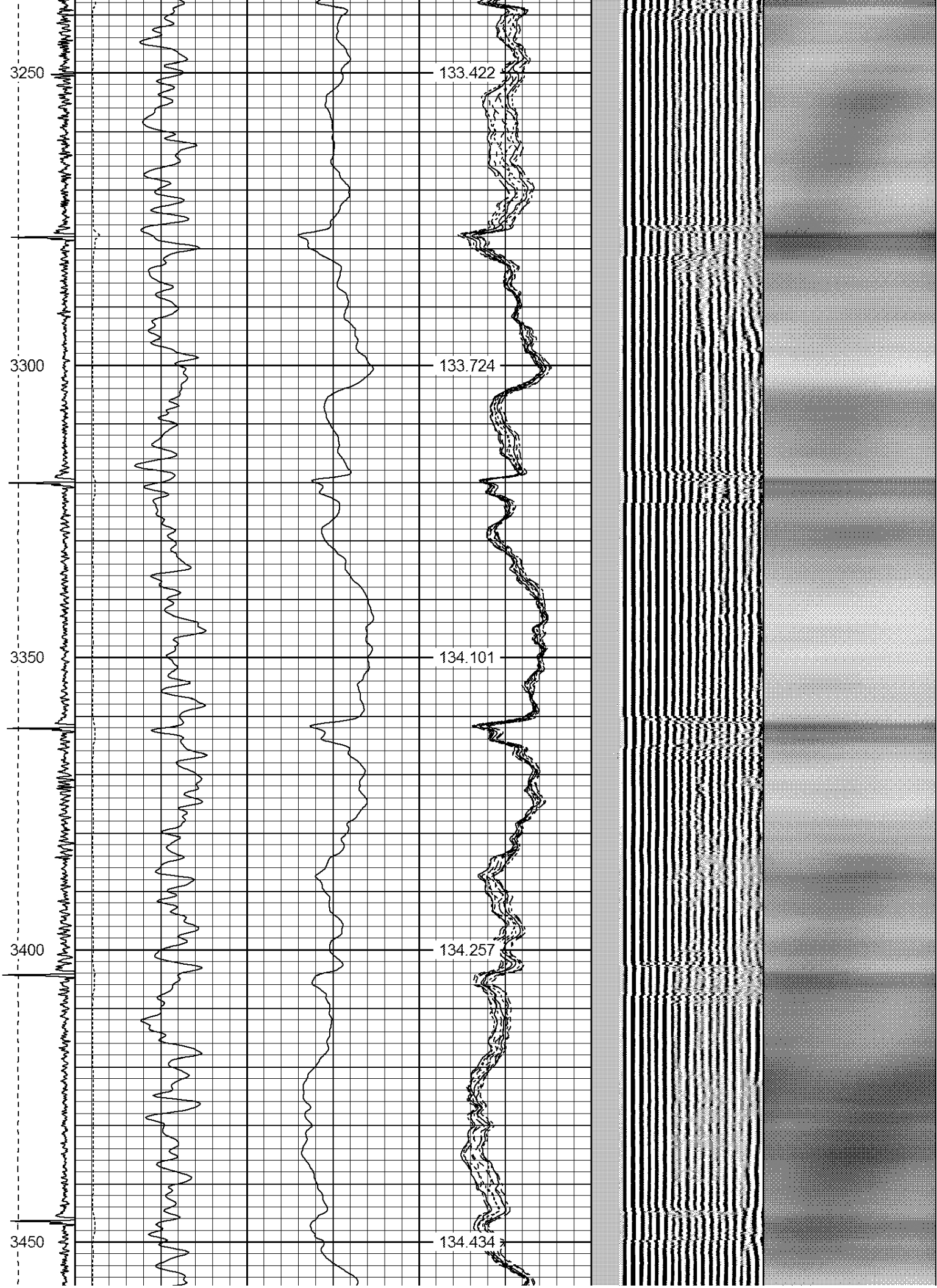
134.101

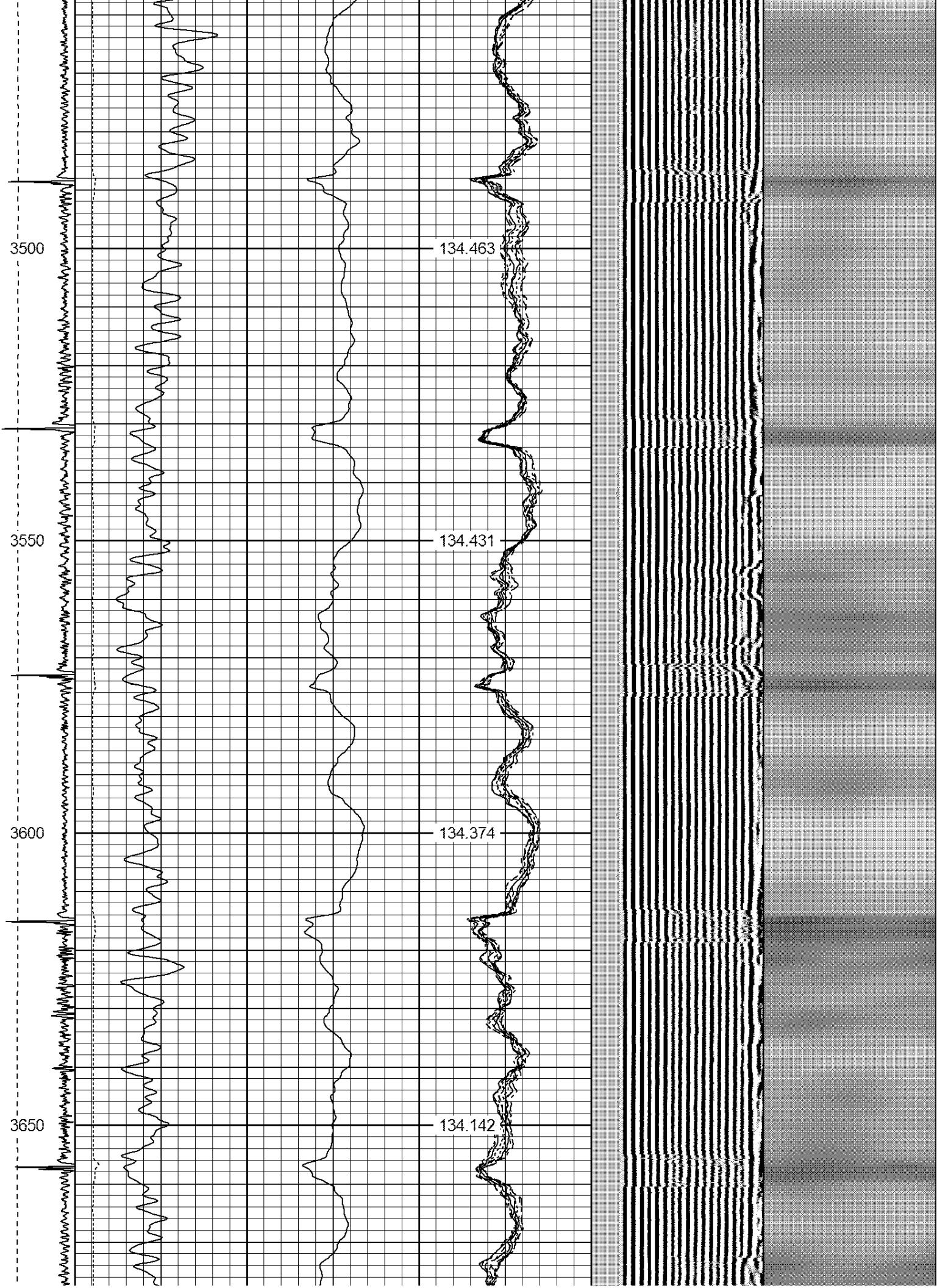
3400

134.257

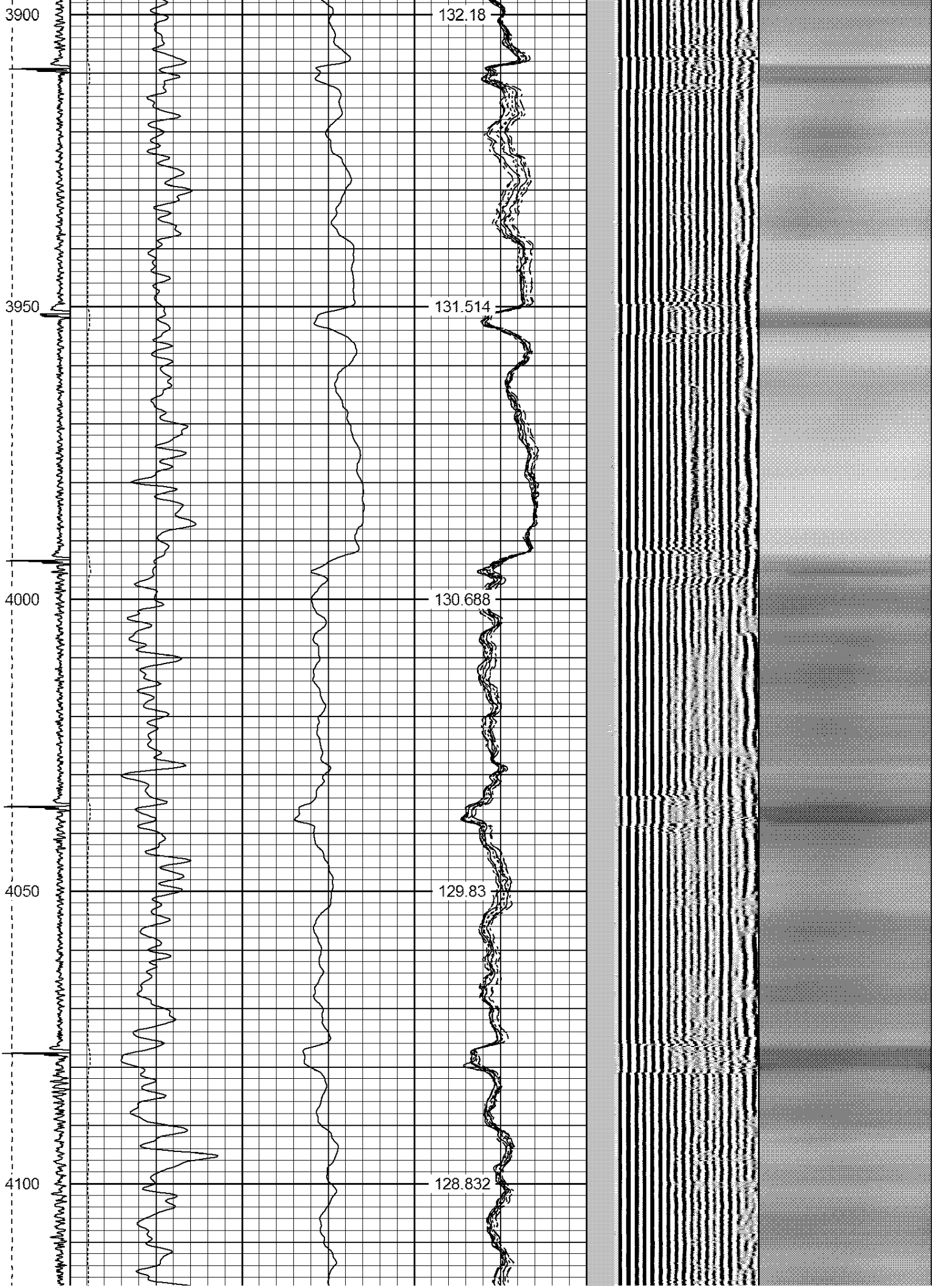
3450

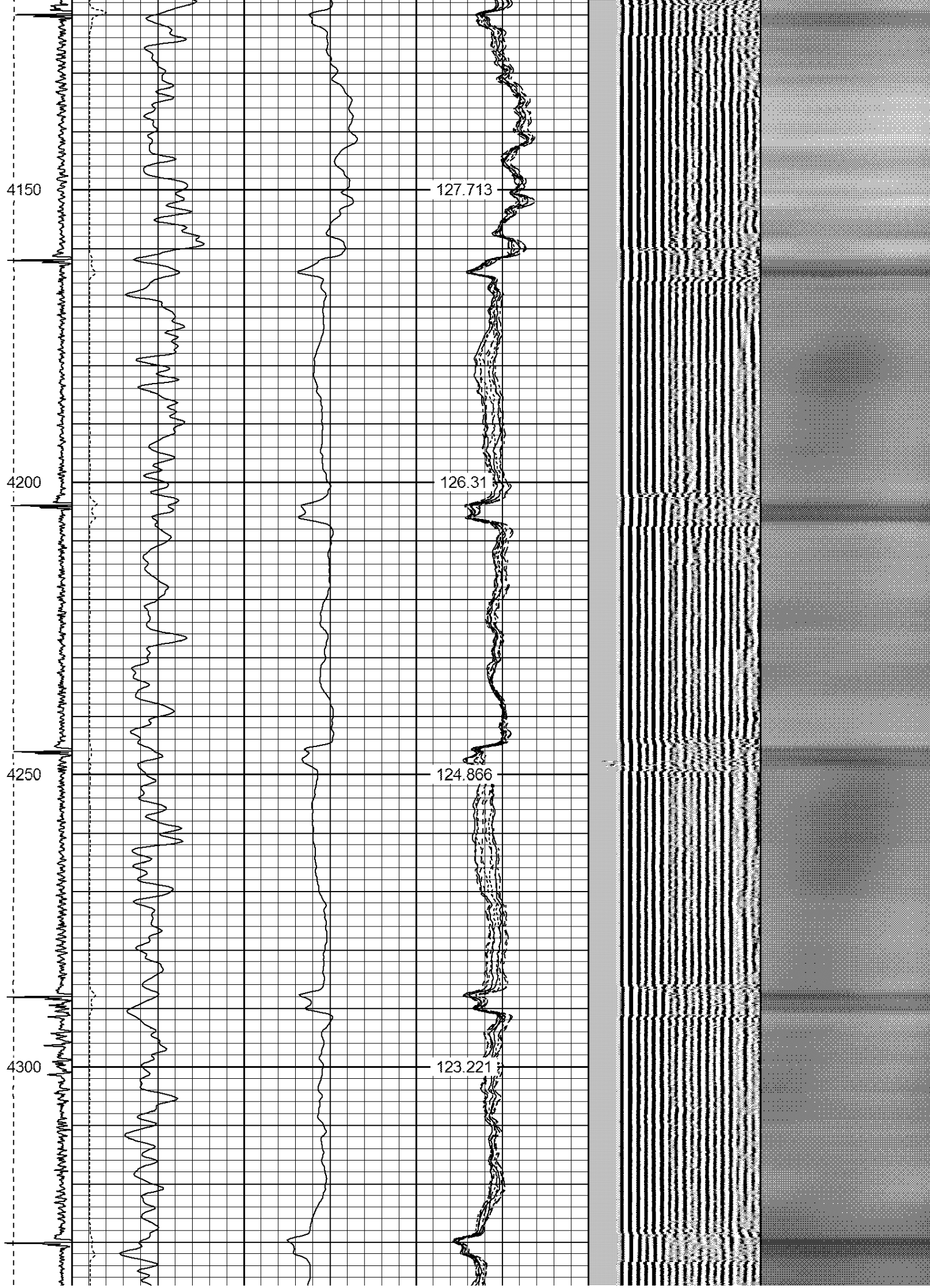
134.434

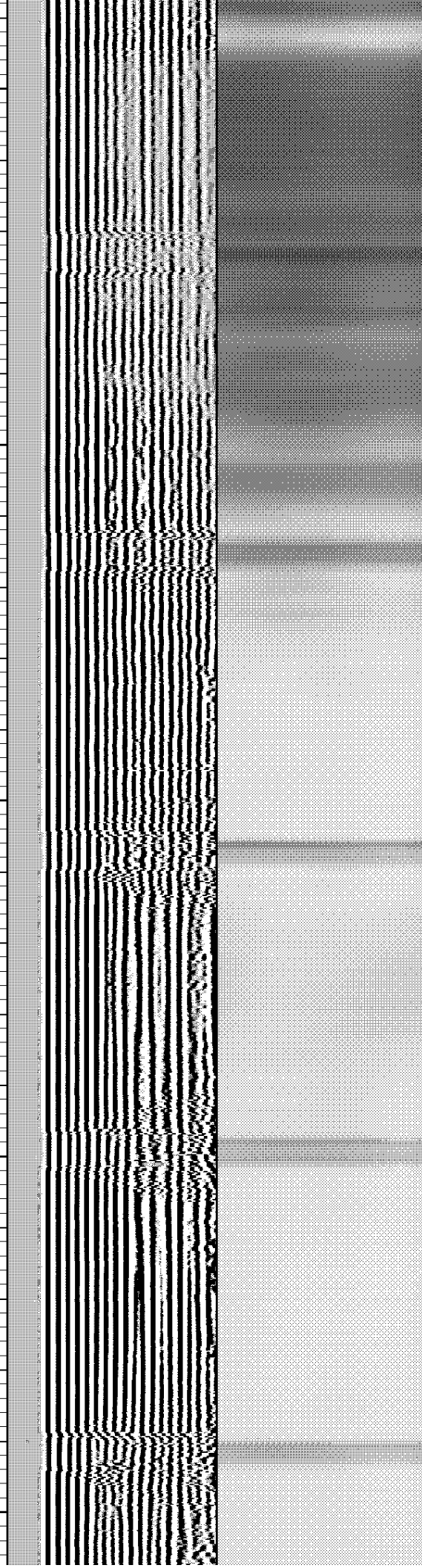
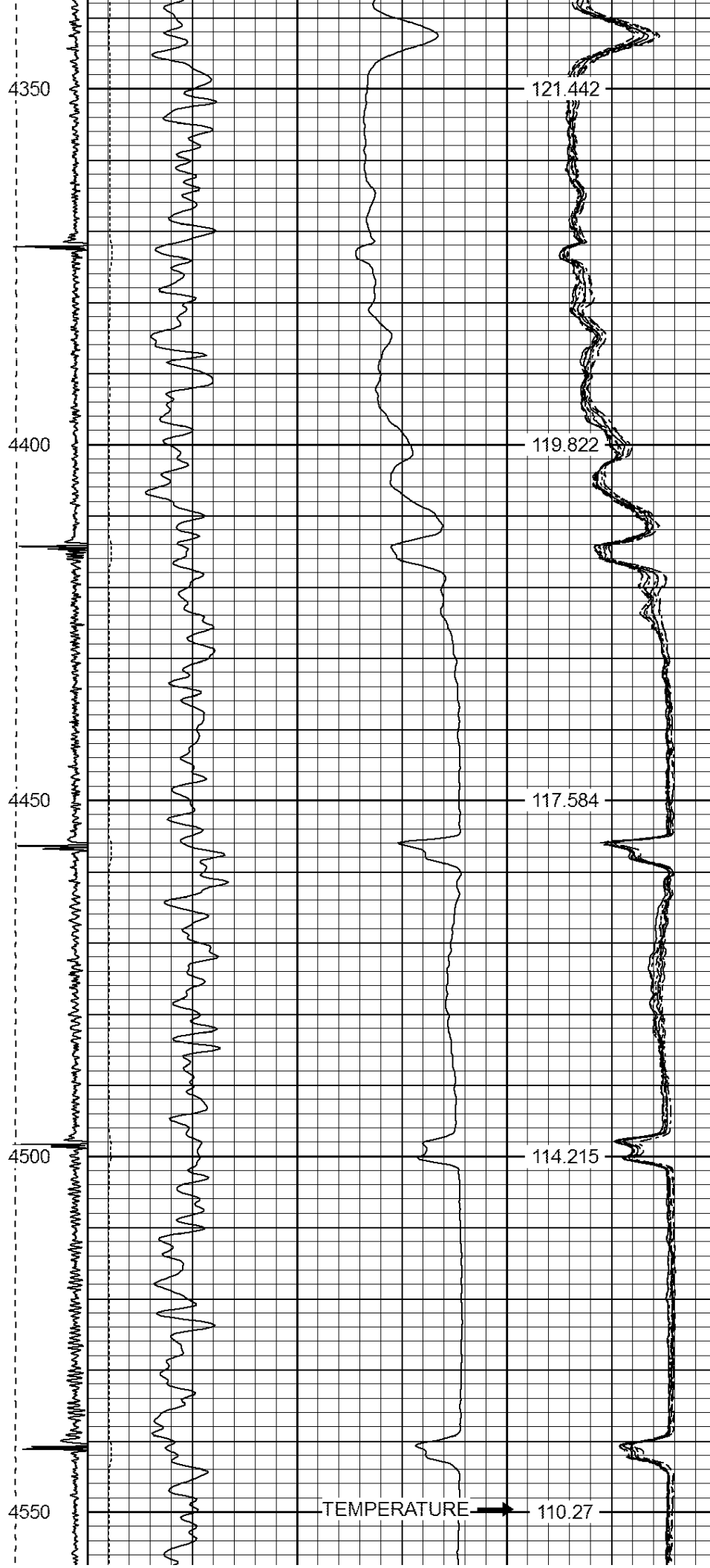


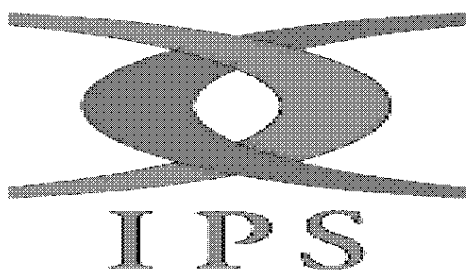
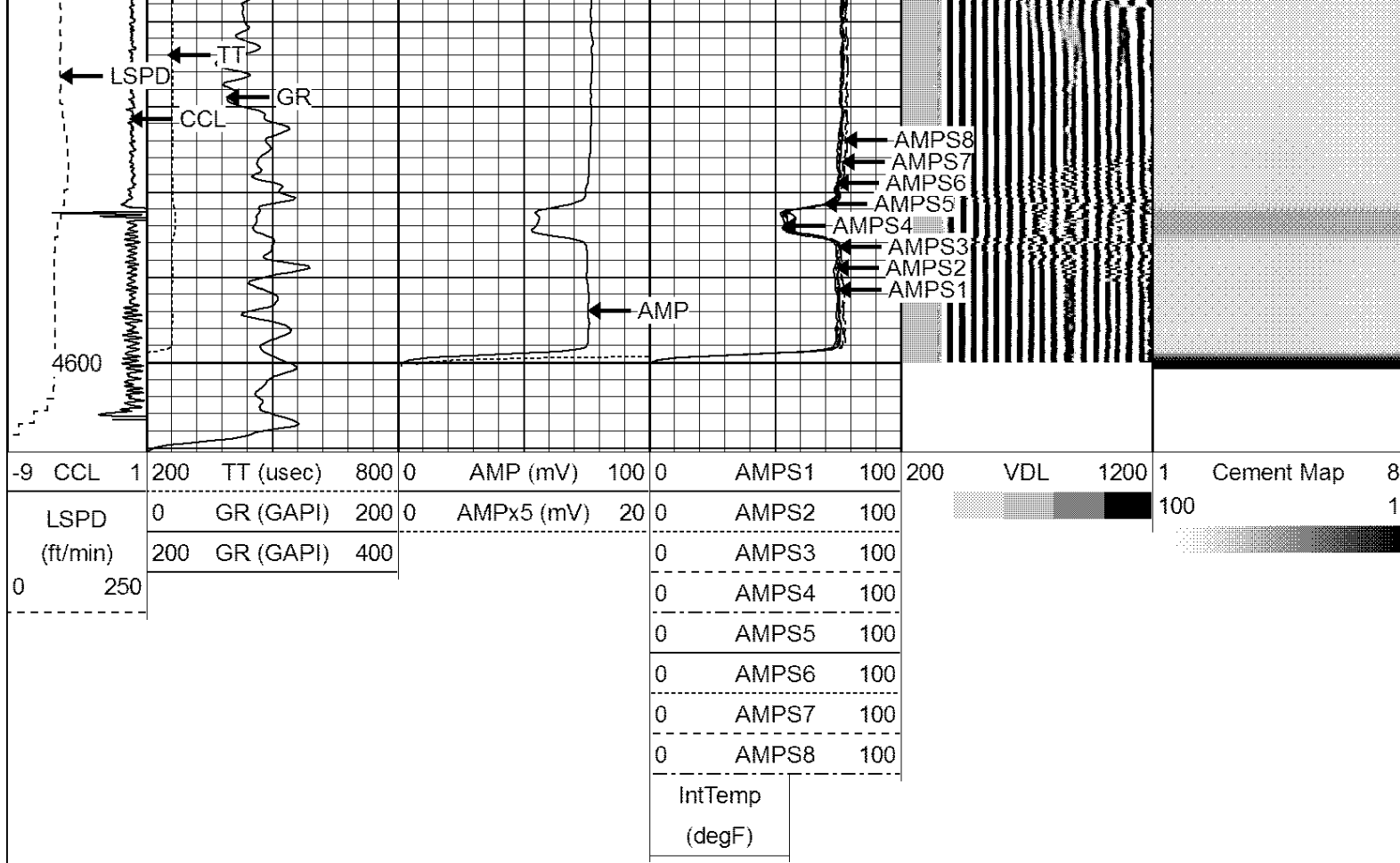












Company NOBLE ENERGY
 Well GUNTHER 18-02
 Field WATTENBURG
 County WELD
 State CO