

Well Dipaolo Red W 25-10

Field DJ

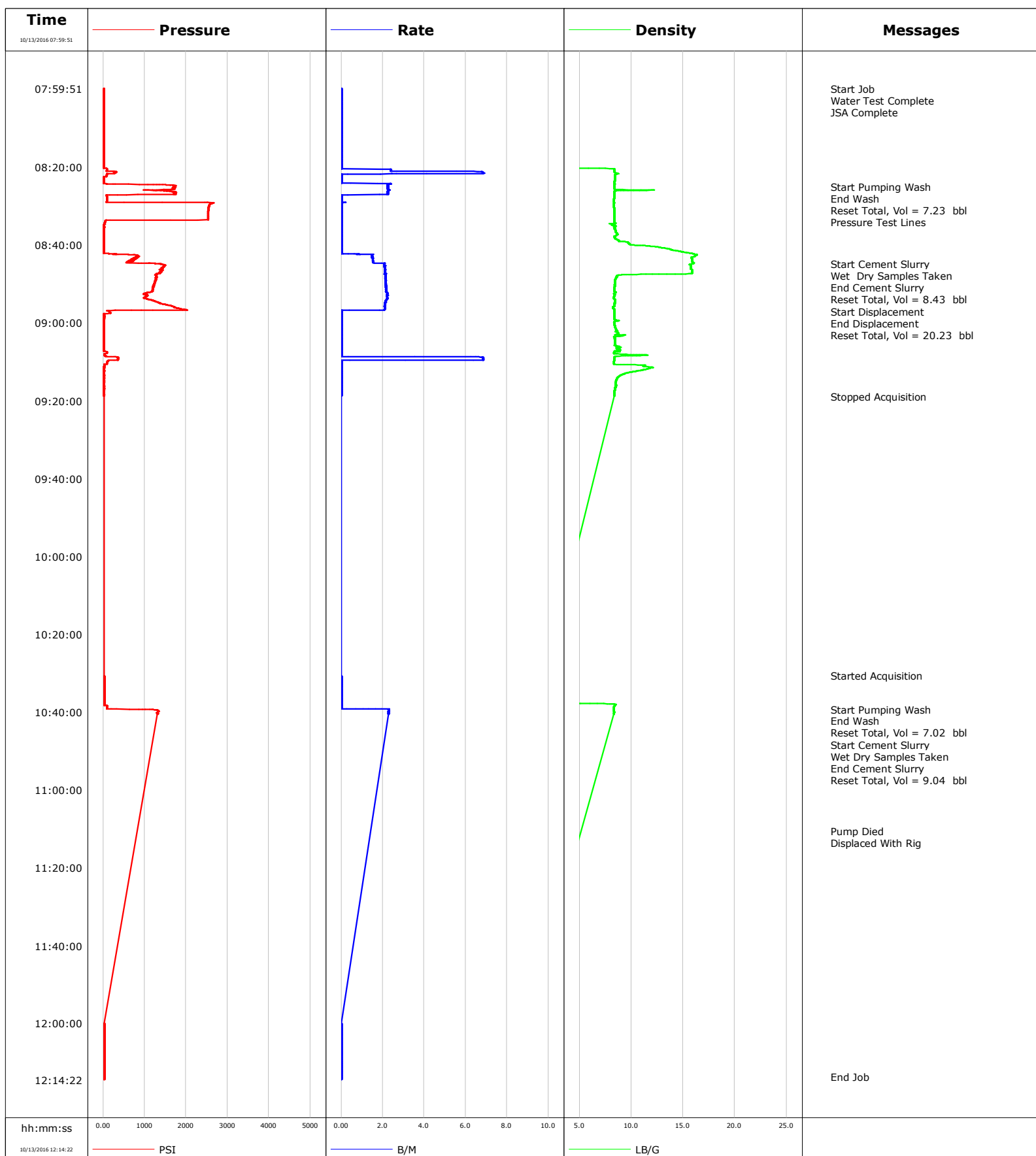
Engineer Wayne Silvester

Country United States

Client Anadarko

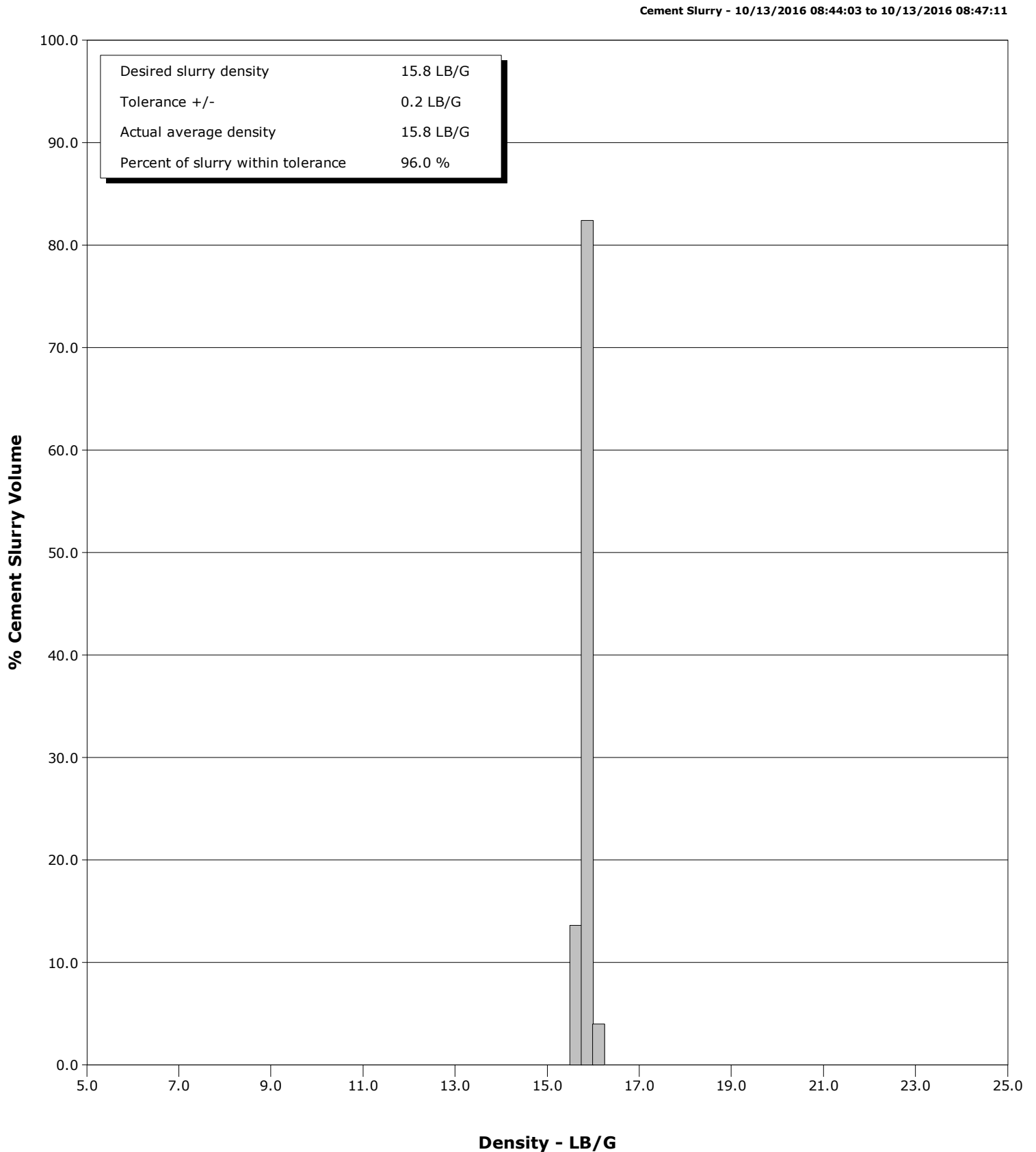
SIR No. DNKQ-00031

Job Type Nio And Sussex Plugs

Job Date 10-13-2016


Well Dipaolo Red W 25-10
Field DJ
Engineer Wayne Silvester
Country United States

Client Anadarko
SIR No. DNKQ-00031
Job Type Nio And Sussex Plugs
Job Date 10-13-2016



Cementing Service Report

				Customer Anadarko			Job Number DNKQ-00031						
Well Dipaolo Red W 25-10			Location (legal) 217304			Schlumberger Location Cheyenne			Job Start Oct/13/2016				
Field DJ		Formation Name/Type			Deviation deg		Bit Size in		Well MD ft		Well TVD ft		
County Weld		State/Province Colorado			BHP psi		BHST degF		BHCT degF		Pore Press. Gradient lb/gal		
Well Master 0630420709		API/UWI 5123166630001											
Rig Name Workover		Drilled For Oil & Gas		Service Via Land		Casing/ Liner							
						Depth, ft		Size, in		Weight, lb/ft		Grade	
Offshore Zone		Well Class Old		Well Type Other									
Drilling Fluid Type		Max. Density lb/gal		Plastic Viscosity cP		Tubing/Drill Pipe							
						T/D		Depth, ft		Size, in		Weight, lb/ft	
Service Line Cementing		Job Type Nio And Sussex Plugs											
Max. Allowed Tub. Press psi		Max. Allowed Ann. Press psi		WH Connection		Perforations/Open Hole							
						Top, ft		Bottom, ft		shot/ft		No. of Shots	
						ft		ft				Total Interval ft	
						ft		ft				Diameter in	
						ft		ft					
Service Instructions Nio Plug= 31sk 1.53ft3/sk 6.350gps = 8.4bbbls Est Toc= 6434ft Sussex= 33sk 1.53ft3/sk 6.354gps =9.0bbbls Est Toc= 4315ft						Treat Down		Displacement bbl		Packer Type		Packer Depth ft	
						Tubing Vol. bbl		Casing Vol. bbl		Annular Vol. bbl		Openhole Vol. bbl	
Casing/Tubing Secured <input checked="" type="checkbox"/>		1 Hole Vol. Circulated prior to Cement <input checked="" type="checkbox"/>				Casing Tools				Squeeze Job			
Lift Pressure psi						Shoe Type				Squeeze Type			
Pipe Rotated <input type="checkbox"/>		Pipe Reciprocated <input type="checkbox"/>				Shoe Depth ft				Tool Type			
No. Centralizers		Top Plugs		Bottom Plugs		Stage Tool Type				Tool Depth ft			
Cement Head Type						Stage Tool Depth ft				Tail Pipe Size in			
Job Scheduled For Oct/13/2016		Arrived on Location Oct/13/2016		Leave Location Oct/13/2016		Collar Type				Tail Pipe Depth ft			
						Collar Depth ft				Sqz. Total Vol. bbl			
Date	Time 24-hr clock	Flow Rate B/M	Density LB/G	Volume BBL	CPF1_PRESS PSI	Message							
10/13/2016	07:59:51	0.0	-0.00	0.0	22	Started Acquisition							
10/13/2016	07:59:54	0.0	-0.00	0.0	22	Start Job							
10/13/2016	08:00:00	0.0	-0.00	0.0	22	Water Test Complete							
10/13/2016	08:00:01	0.0	-0.00	0.0	22	JSA Complete							
10/13/2016	08:04:52	0.0	-0.00	0.0	22								
10/13/2016	08:09:53	0.0	-0.00	0.0	22								
10/13/2016	08:14:54	0.0	-0.00	0.0	22								
10/13/2016	08:19:55	0.0	-0.00	0.0	22								
10/13/2016	08:24:56	2.2	8.37	10.7	1752								
10/13/2016	08:25:00	2.2	8.37	10.8	1748	Start Pumping Wash							
10/13/2016	08:27:12	0.0	8.35	15.6	164	End Wash							
10/13/2016	08:27:13	0.0	8.35	15.6	95	Reset Total, Vol = 7.23 bbl							
10/13/2016	08:27:15	0.0	8.35	15.6	86	Pressure Test Lines							
10/13/2016	08:29:57	0.0	8.35	15.9	2553								
10/13/2016	08:34:58	0.0	8.20	16.1	17								
10/13/2016	08:39:59	0.0	9.90	16.1	22								
10/13/2016	08:44:53	2.1	15.93	19.6	1363	Start Cement Slurry							
10/13/2016	08:45:00	2.1	15.68	19.8	1409								
10/13/2016	08:45:03	2.1	15.62	19.9	1427	Wet Dry Samples Taken							
10/13/2016	08:47:27	2.2	15.76	24.9	1304	End Cement Slurry							
10/13/2016	08:47:28	2.1	15.60	24.9	1281	Reset Total, Vol = 8.43 bbl							

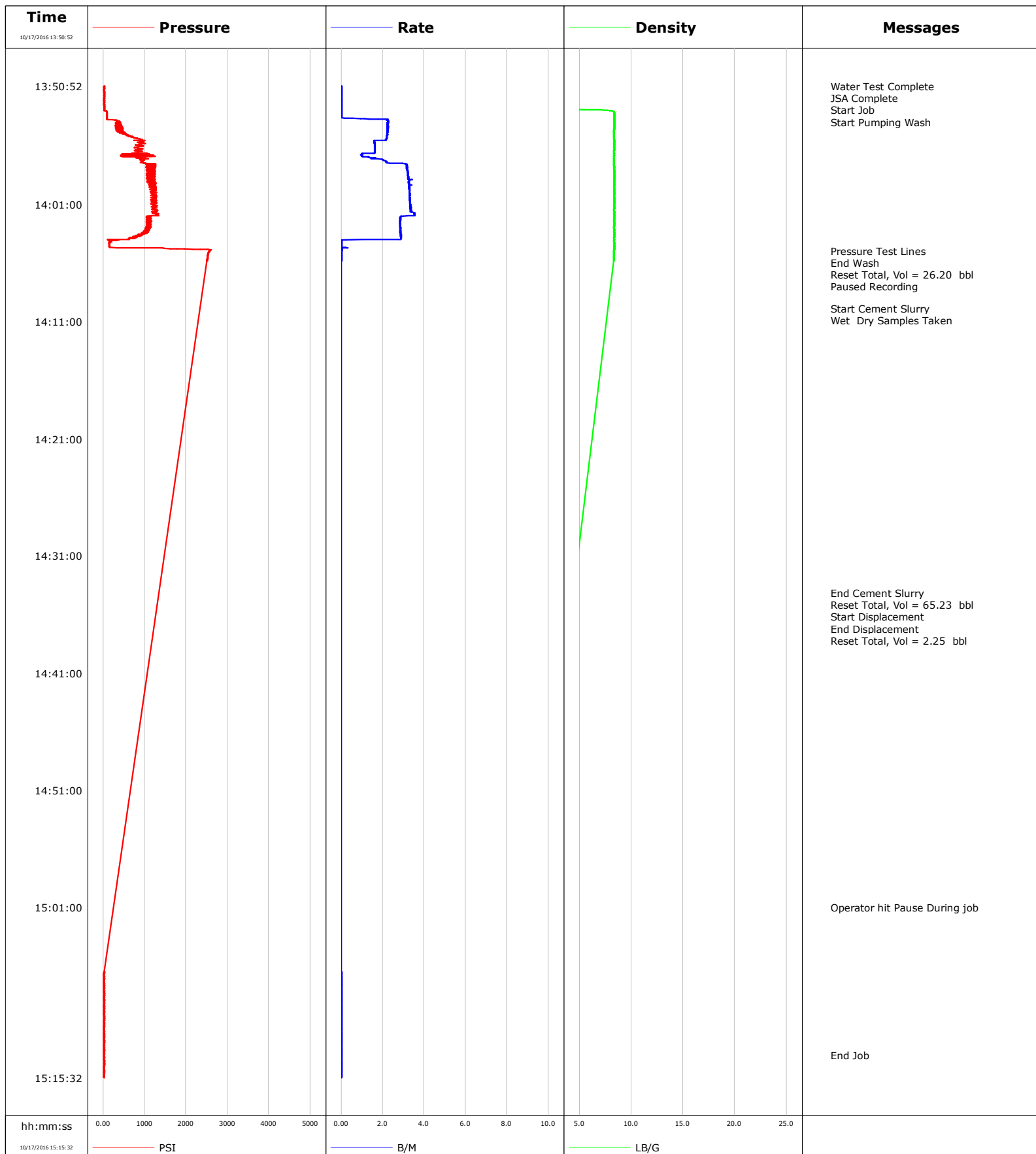
Well			Field		Job Start		Customer		Job Number	
Dipaolo Red W 25-10			DJ		Oct/13/2016		Anadarko		DNKQ-00031	
Date	Time 24-hr clock	Flow Rate B/M	Density LB/G	Volume BBL	CPF1_PRESS PSI	Message				
10/13/2016	08:50:01	2.2	8.40	30.3	1240					
10/13/2016	08:55:02	2.1	8.37	41.7	1372					
10/13/2016	08:56:50	0.0	8.35	45.4	686	End Displacement				
10/13/2016	08:56:53	0.0	8.35	45.4	159	Reset Total, Vol = 20.23 bbl				
10/13/2016	09:05:04	0.0	8.43	48.0	22					
10/13/2016	09:10:05	0.0	8.35	69.2	100					
10/13/2016	09:15:06	0.0	8.52	71.2	22					
10/13/2016	09:18:51	0.0	8.39	71.2	27	Stopped Acquisition				
10/13/2016	10:35:22	0.0	1.33	0.0	31					
10/13/2016	10:39:21	2.2	8.35	1.2	1198	Start Pumping Wash				
10/13/2016	10:40:23	2.3	8.34	3.5	1308					
10/13/2016	12:00:39	0.0	-0.00	3.8	27					
10/13/2016	12:05:40	0.0	-0.00	3.8	27					
10/13/2016	12:10:41	0.0	-0.00	3.8	27					

Post Job Summary

Average Pump Rates, bbl/min					Volume of Fluid Injected, bbl			
Slurry 3.2	N2	Mud	Maximum Rate 6.7		Total Slurry 17.8	Mud 0.0	Spacer 14.0	N2
Treating Pressure Summary, psi					Breakdown Fluid			
Maximum 1354	Final 27	Average 96	Bump Plug to	Breakdown	Type	Volume bbl	Density lb/gal	
Avg. N2 Percent %		Designed Slurry Volume 17.4 bbl		Displacement 32.0 bbl	Mix Water Temp 67 degF	Cement Circulated to Surface? <input type="checkbox"/>	Volume bbl	
						Washed Thru Perfs <input type="checkbox"/>	To ft	
Customer or Authorized Representative Rusty Tucker			Schlumberger Supervisor Wayne Silvester			Circulation Lost <input type="checkbox"/>	Job Completed <input checked="" type="checkbox"/>	
						-	-	

Well Dipaolo Red W 25-10
Field DJ
Engineer Wayne Silvester
Country United States

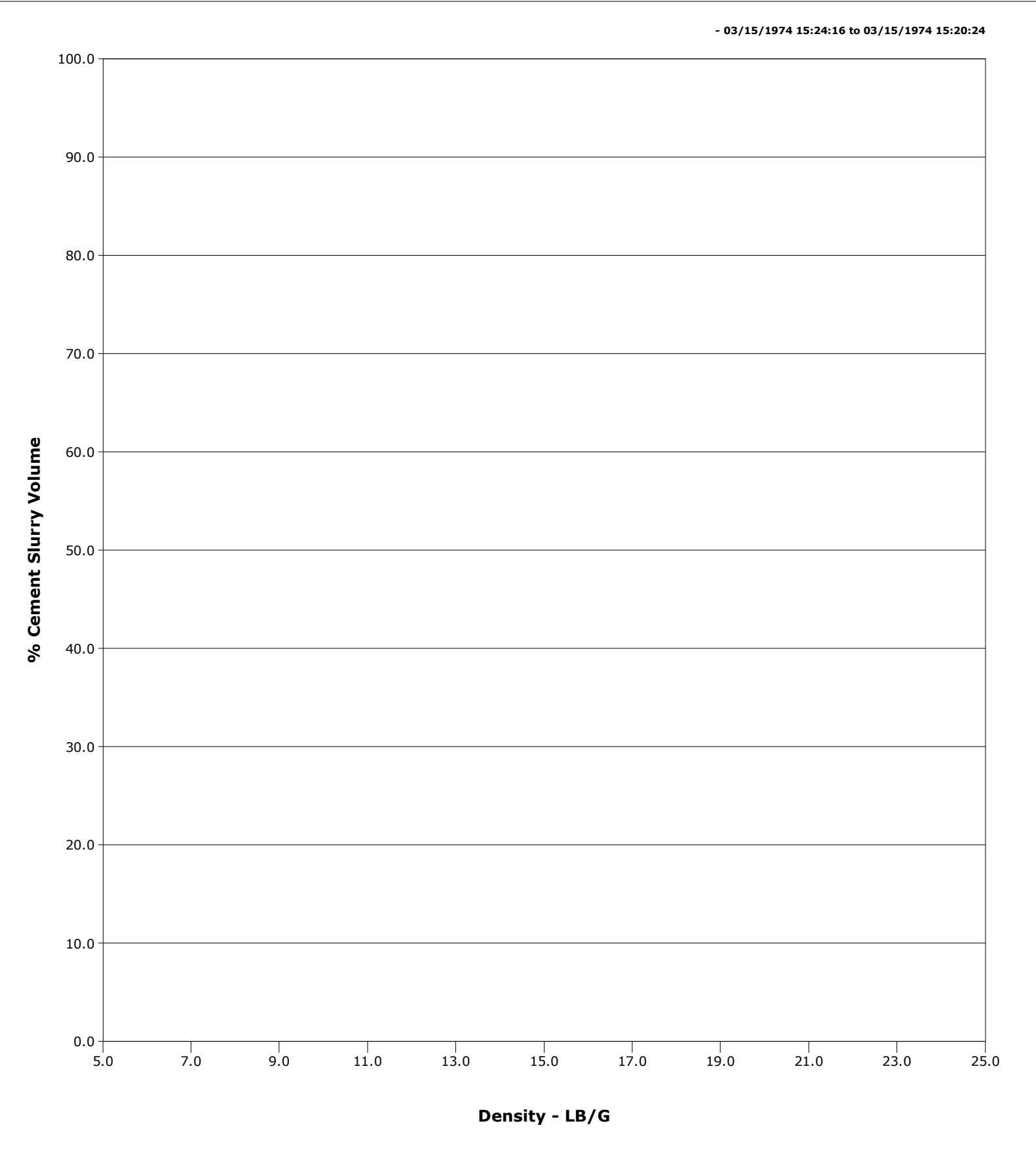
Client Anadarko
SIR No. DNKQ-00033
Job Type Stub Plug
Job Date 10-17-2016





Cementing Qa/Qc Density Report

Well	Dipaolo Red W 25-10	Client	Anadarko
Field	DJ	SIR No.	DNKQ-00033
Engineer	Wayne Silvester	Job Type	Stub Plug
Country	United States	Job Date	10-17-2016



Cementing Service Report

				Customer Anadarko		Job Number DNKQ-00033	
Well Dipaolo Red W 25-10		Location (legal) 217304		Schlumberger Location Cheyenne		Job Start Oct/17/2016	
Field DJ		Formation Name/Type		Deviation deg		Well MD 1690.0 ft	
County Weld		State/Province Colorado		Bit Size in		Well TVD 1690.0 ft	
Well Master 0630420709		API/UWI 5123166630001		BHP psi		BHST degF	
				BHCT degF		Pore Press. Gradient lb/gal	
Rig Name Concord 6		Drilled For Oil & Gas		Service Via Land		Casing/Liner	
						Depth, ft	
						Size, in	
						Weight, lb/ft	
						Grade	
						Thread	
Offshore Zone		Well Class Old		Well Type Other		1690.0	
						3.5	
						7.7	
						N/A	
						N/A	
Drilling Fluid Type		Max. Density lb/gal		Plastic Viscosity cP		Tubing/Drill Pipe	
						T/D	
						Depth, ft	
						Size, in	
						Weight, lb/ft	
						Grade	
						Thread	
Service Line Cementing		Job Type Stub Plug				T	
						1690.0	
						1.0	
						1.2	
						N/A	
						N/A	
Max. Allowed Tub. Press psi		Max. Allowed Ann. Press psi		WH Connection 2 3/8" 4.7# T/S		Perforations/Open Hole	
						Top, ft	
						Bottom, ft	
						shot/ft	
						No. of Shots	
						Total Interval ft	
Service Instructions Stub Plug =245sks 1.50ft3/sk 6.041gps =65bbbls Est Toc=867ft						ft	
						ft	
						ft	
						Diameter in	
						Treat Down Tubing	
						Displacement 2.0 bbl	
						Packer Type	
						Packer Depth ft	
						Tubing Vol. 2.0 bbl	
						Casing Vol. bbl	
						Annular Vol. bbl	
						Openhole Vol. bbl	
Casing/Tubing Secured <input checked="" type="checkbox"/>		1 Hole Vol. Circulated prior to Cement <input checked="" type="checkbox"/>		Casing Tools		Squeeze Job	
Lift Pressure psi				Shoe Type		Squeeze Type	
Pipe Rotated <input type="checkbox"/>		Pipe Reciprocated <input type="checkbox"/>		Shoe Depth ft		Tool Type	
No. Centralizers		Top Plugs		Bottom Plugs		Tool Depth ft	
Cement Head Type				Stage Tool Type		Tool Depth ft	
				Stage Tool Depth ft		Tail Pipe Size in	
Job Scheduled For Oct/17/2016		Arrived on Location Oct/17/2016		Leave Location Oct/17/2016		Collar Type	
						Collar Depth ft	
						Sqz. Total Vol. bbl	
Date	Time 24-hr clock	Flow Rate B/M	Density LB/G	Volume BBL	CPF1_PRESS PSI	Message	
10/17/2016	13:50:52	0.0	-0.00	0.0	27	Started Acquisition	
10/17/2016	13:50:53	0.0	-0.00	0.0	27	Water Test Complete	
10/17/2016	13:50:54	0.0	-0.00	0.0	27	JSA Complete	
10/17/2016	13:50:55	0.0	-0.00	0.0	27	Start Job	
10/17/2016	13:50:57	0.0	-0.00	0.0	27	Start Pumping Wash	
10/17/2016	13:55:53	1.6	8.35	4.8	864		
10/17/2016	14:00:54	3.3	8.35	17.3	1281		
10/17/2016	14:04:57	0.0	8.35	26.2	2572	Pressure Test Lines	
10/17/2016	14:05:46	0.0	8.35	26.2	2508	End Wash	
10/17/2016	14:05:47	0.0	8.35	26.2	2508	Reset Total, Vol = 26.20 bbl	
10/17/2016	14:05:49	0.0	8.35	26.2	2508	Paused Recording	
10/17/2016	15:11:08	0.0	-0.00	26.2	27		

Well Dipaolo Red W 25-10	Field DJ	Job Start Oct/17/2016	Customer Anadarko	Job Number DNKQ-00033
------------------------------------	--------------------	---------------------------------	-----------------------------	---------------------------------

Post Job Summary

Average Pump Rates, bbl/min					Volume of Fluid Injected, bbl			
Slurry 3.9	N2	Mud	Maximum Rate 18.1		Total Slurry 65.2	Mud 0.0	Spacer 16.2	N2
Treating Pressure Summary, psi					Breakdown Fluid			
Maximum 2608	Final 22	Average 504	Bump Plug to	Breakdown	Type	Volume bbl		Density lb/gal
Avg. N2 Percent %	Designed Slurry Volume 65.0 bbl	Displacement 2.2 bbl	Mix Water Temp 65 degF	Cement Circulated to Surface? <input type="checkbox"/>		Volume bbl		
				Washed Thru Perfs <input type="checkbox"/>		To ft		
Customer or Authorized Representative Bryan Olmstead			Schlumberger Supervisor Wayne Silvester			Circulation Lost <input type="checkbox"/>		Job Completed <input checked="" type="checkbox"/>
						-		-